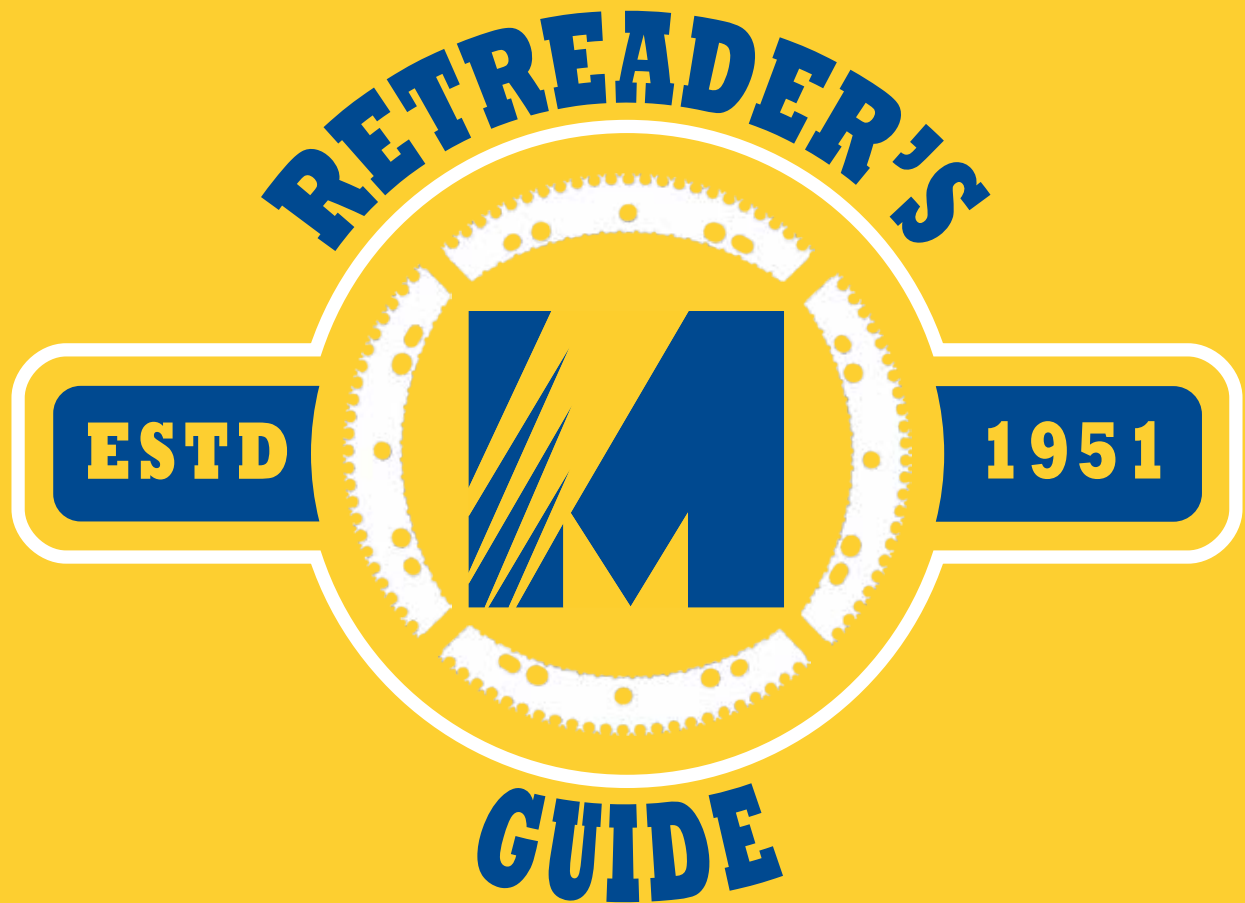


McGee Company



Everything for the Retread Shop!

1-800-525-8888

Rev 24

MCGEE COMPANY PUTS THE PIECES TOGETHER FOR YOU

The Company

McGee Company is a family owned business that cares about your success. Since 1951, McGee Company has been a leading supplier in the automotive market. Between our five warehouse locations in Denver, Salt Lake City, Dallas, Atlanta and Albuquerque, we carry the largest inventory of equipment and supplies to serve the tire dealer, automotive service facility, dealership, & retailer. Our broader line also includes lubrication equipment, air compressors and automotive service equipment. Full history of McGee Company available online!

Picking Product

It's an art as well as a science! For more than 70 years, McGee Company has carefully researched each product line. Products are tested under severe conditions to guarantee the customer is receiving the best quality. We look for new ideas that work right and make your job easier. Our sales reps are experts to help you select the best product for your needs and manage your inventory to maximize your business.

One Supplier

Our broad range of products offer you a single source for all your equipment and supply needs, in turn, saving you time and money.

People

Ours make the difference for you! They're friendly and trained to help. The average sales representative has been with the company for ten years. This means they have the knowledge and know how to find the right solution for your needs.

Terms and Conditions of Sale

Open account

Open account terms of net 10th prox are available with approved credit. Orders under \$20 are subject to a \$5.00 handling charge.

Pricing

Subject to change without notice, but McGee Company strives to get our customers the best value.

Product Warranty

Manufacturer's warranty applies on all items. Warranty of certain items apply only after inspection by the manufacturer.

Sales Tax

McGee Company will bill applicable state and local sales tax on every item unless a sales tax exemption/resale certification has been provided by the customer.

Credit Cards

We accept MasterCard and Visa credit cards.

Fast and Easy

Convenient ordering online, by phone, and by email. McGee Company is open from 8 a.m. to 5 p.m., Monday through Friday. We maintain the largest inventory of the items listed in our catalog in the Rocky Mountain area.

Training

McGee offers numerous seminars on an ongoing basis for customers and staff alike. Denver has an expanded training area that regularly hosts sessions with vendors and industry bodies. Regular seminars include: proper tire repair, alignment training, equipment maintenance, and TPMS systems and best practices. Continued education ensures our reps give the best advice available in the industry.

National Support

We are supported by 34 Ascot warehouses nationally, our membership in Ascot gives you the benefit of buying power, large inventory and diverse product lines.

Lease Programs

Call us for fast, easy and affordable lease or financing deals on equipment. Tell us about your needs and we will tailor the program to you.

Online Presence

www.McGeeCompany.com has a variety of resources to ensure we are your one stop shop! Online customers can order, view their order history, look up invoices, and view lift inspections from previous years. Additionally, there are product breakdowns, SDS sheets, TPMS lookup charts, used equipment specials, and tutorial videos.

Freight

All prices are FOB our warehouse unless otherwise specified.

Returning Merchandise

Merchandise is eligible for credit or exchange if the following conditions are fulfilled:

1. Authority for return has been received.
2. Shipping instructions have been followed.
3. All returned merchandise must be accompanied by a notice indicating date of purchase and the invoice number.
4. Items must be in resellable condition.

Damaged Shipments

Please inspect shipments before signing the freight bill. A damaged or incomplete shipment should be noted on the freight bill. A claim must be filed with the carrier immediately.



McGee Company
Since 1951

Albuquerque
4412 Prospect NE
Albuquerque, NM 87110

Atlanta
4545 Commerce Circle SW
Atlanta, GA 30336

Dallas
8504 Chancellor Row
Dallas, TX 75427

Denver
1140 S. Jason St.
Denver, CO 80223

Salt Lake City
1101 S. 700 W.
Salt Lake City, UT 84104

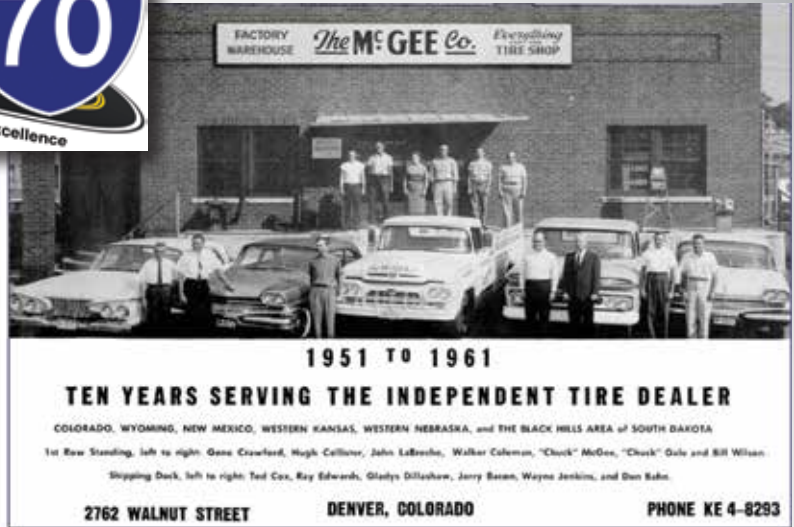
1-800-525-8888



Family owned since 1951, the McGee Company has always operated with one simple goal: To anticipate the needs of our customers by having the right product available to them—right when they need it. Founded by Charles J. McGee Senior, in lower downtown Denver, McGee Company originally sold rubber for retreading. Soon, the business expanded to meet all the needs of the tire shop. Meeting those requirements meant that McGee needed to be able to install and service equipment and so AirMac Service was born. McGee Company moved to its current location at 1140 S. Jason St. in 1961.

As the McGee territory grew, so did the warehousing needs of the company. McGee set up branches in Salt Lake City and Albuquerque. In the mid-seventies, the second generation of leadership entered McGee with Joanne and Chuck McGee. The acquisition of Paris Rubber Supply in 1992 continued the family feel for McGee Company as second generation employees from Paris & McGee began working in the various branches and taking the company to new heights.

Expansion continued in Texas with David Lane & Sons in 1994 and Burdette Supply in Oklahoma City in 1999. Southern states are now serviced from a warehouse facility in Dallas, Texas. The owners of each acquired company have been actively involved with day-to-day operations for the McGee Company. In 2015 McGee Company added service and installation in the Salt Lake City market for lifts, lubrication systems, and compressed air systems. Five D Supply of Kansas came aboard with McGee Company in late 2016 to increase the foot print throughout the State. In 2022, we launched our Atlanta branch to service the East Coast. The average employment time speaks for itself, with many employees working for McGee Company for over ten years. McGee Company is celebrating in 2021 its 70th year servicing the transportation industry with third generation Ian & Michael McGee in leadership roles. Here at McGee Company, we are an extended family and strive to bring the American West the largest inventory of products possible to best serve our customers every day.



CONTENTS

RASP BLADES, SPACERS AND HUBS.....	1-8
Blades, Gouges, Pins, Hubs, and Spacers	
SURFACE PREP.....	9-14
Wheel Brushes, Rasps, Contour Wheels, and Knife Blades	
RETREAD ACCESSORIES	15
Rims and Release liners	
CONSUMABLES.....	16-17
Tire Appearance, Gum, and Cement	
ENVELOPES.....	18-22
Sprayers, Lube, Repair, Envelopes, and Wicking	
SHOP TOOLS	23-26
Flexible Shaft, Staples, Couplers, Branders, and Markers	
TIRE REPAIR.....	27-38
Knives, Patches, Chemicals, Burrs, Stones, Extruders, and Clippers	
SECTION SYSTEMS	39-40
Monaflex, OTR	
RETREAD EQUIPMENT.....	41-46
Spreaders, Lights, Dunkers, and Paint Sprayer	
AIR TOOLS	47-53
SAFETY PRODUCTS	54-55
Glasses, Gloves, and Ear Protection	
SHOP AIR ACCESSORIES	56-57
Hoses, Couplers, and Nipples	



1 RASP BLADES, SPACERS & HUBS //

BLADES, GOUGES, PINS, HUBS, AND SPACERS

Rasp Blades

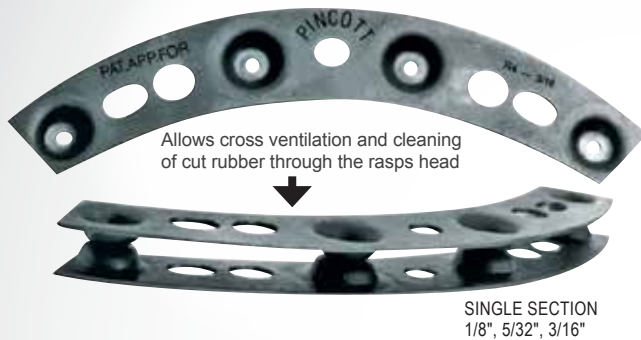


Rasp Blades and Spacers

PINCOTT® STANDARD SERIES

AIR COOLED SPACERS

Progressive development of blades capable of higher rates of rubber removal and the use of more powerful and higher speed machines imposed increasingly severe temperature conditions on rasp blades, giving rise to the need for effective cooling to avoid loss of temper in the blade material.



- Lower cost per buffed tire • Engineered by a company with over 65 years in the retreading industry • Designed to fit all U.S. and European buffing machines, manufactured with multiple stampings to allow interchangeability between two or three pin hubs • Benefits include: reduced heat and smoke, cleaner buffer, cooler running and faster buffing • 6 precision sizes • Heavy duty quality steel blade • Cross ventilation • Special heat treatment for long life • Increases blade life: Keeps blades running cooler, improves buff texture and prevents premature blade breakage

ASCOT NO.	MCGEE. NO.	DESCRIPTION
613-00414	R4S14DL	1/4" Double
613-00418	R4S18SL	1/8" Single
613-00438	R4S38DL	3/8" Double
613-04316	R4S316SL	3/16" Single
613-04516	R4S516DL	5/16" Double
613-04532	R4S532SL	5/32" Single
613-00514	R5S14DL	1/4" Double
613-00518	R5S18SL	1/8" Single
613-00538	R5S38DL	3/8" Double
613-53165	R5S316SL	3/16" Single
613-00614	R6S14DL	1/4" Double
613-00618	R6S18SL	1/8" Single
613-00638	R6S38DL	3/8" Double
613-06316	R6S316SL	3/16" Single
613-06516	R6S516DL	5/16" Double
613-06532	R6S532SL	5/32" Single

SPACERS FOR
9" 4-SEGMENT

SPACERS FOR
11.5" 5-SEGMENT

SPACERS FOR
11.5" 6-SEGMENT

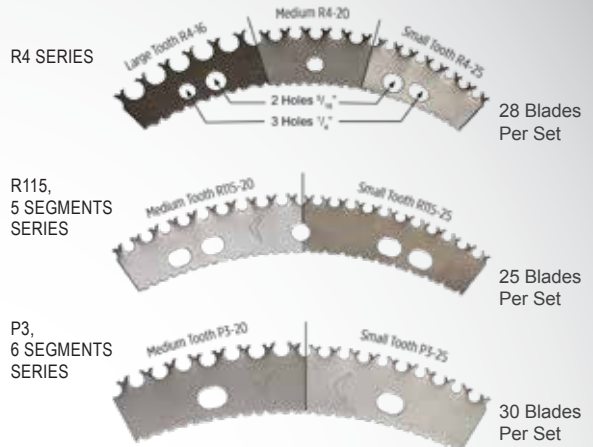
Available for contoured hubs

Replacement Hub Pins

ITEM NO.	DESCRIPTION	PIN516334	5/16" diameter x 3-3/4" pin
PIN14414	1/4" diameter x 4-1/4" pin	PIN516414	5/16" diameter x 4-1/4" pin
PIN148	1/4" diameter x 8" pin	PIN516412	5/16" diameter x 4-1/2" pin
PIN1410	1/4" diameter x 10" pin	PIN5168	5/16" diameter x 8" pin

PINCOTT® STANDARD SERIES BUFFING RASP BLADES

- Exclusive heat treating process • Reduced tooth breakage
- Cooler running • Faster material removal • No blade warpage
- Lower cost per buffed tire



ASCOT NO.	MCGEE. NO.	DESCRIPTION
616-00320	PTP320	Fits All 11.5" 6-Segment Hubs
616-00325	PTP325	Fits All 11.5" 6-Segment Hubs
616-00416	PTR416	Fits All 9" 4-Segment Hubs
616-00420	PTR420	Fits All 9" 4-Segment Hubs
616-00425	PTR425	Fits All 9" 4-Segment Hubs
616-11520	PTR11520	Fits All 11.5" 5-Segment Hubs
616-11525	PTR11525	Fits All 11.5" 5-Segment Hubs

Other sizes available for contoured hubs and use with smart blades

PINCOTT® RASP BLADES - SMART SERIES

- Manufactured with a unique sinusoidal (wave-like) form which introduces a multidirectional cutting action • Wave-like form creates greater strength in the blade and its teeth • Cutting action produces less drag on the rasp motor, saving you energy



ASCOT NO.	MCGEE. NO.	DESCRIPTION
616-01155	Smart I	Fits all 11.5", 5-Segmented Hubs
616-00944	Smart II	Fits all 9", 4-Segmented Hubs
616-01156	Smart III	Fits all 11.5", 6-Segmented Hubs



WHY PINCOTT® HUBS?

The 408106 air cooled hub meets Bandag specifications for all Bandag buffers. Air cooled with Pincott spacers reduce buffing surface heat, reduce blade heat, and move crumb away from the tire for better blade life and surface texture.



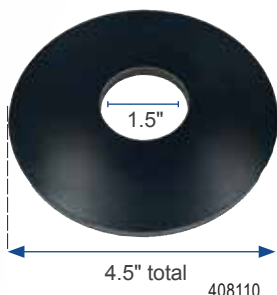
Pincott Bandag Style Hub Model 408106

Pincott 408106 pictured in Bandag setup with 20 ea R4S38DL, 4 ea R4S316SL, 8 ea PIN516334, and 28 PTR420 blades.

OLD STYLE
ANGLED
SPACER
RELOAD VIDEO



Scan Above



Disc available to compensate for worn inside spacer on Bandag buffers. Allows rasp hub to tighten properly. Place on shaft before rasp hub.

R115 5 SEGMENT RASP HUB



408107M Pictured

408107M- Pincott Rasp Head Assy-R115/5-Reg - 78mm CW-65 mm AH for Matteuzzi

Matteuzzi style hub similar to B&J 111003 used by Goodyear. R115 flat rasp 96mm width, 65mm arbor hole, 18mm x 4mm keyway, 78mm clamp width. Includes 2 sets PTR11520 blades, 45 each R5S14DL spacers, and 15 each 104.23mm pins. PIN5164110

408107S Pincott Rasp Head Assy-R115/5-Reg - 86 mm CW-50 mm AH for SIO

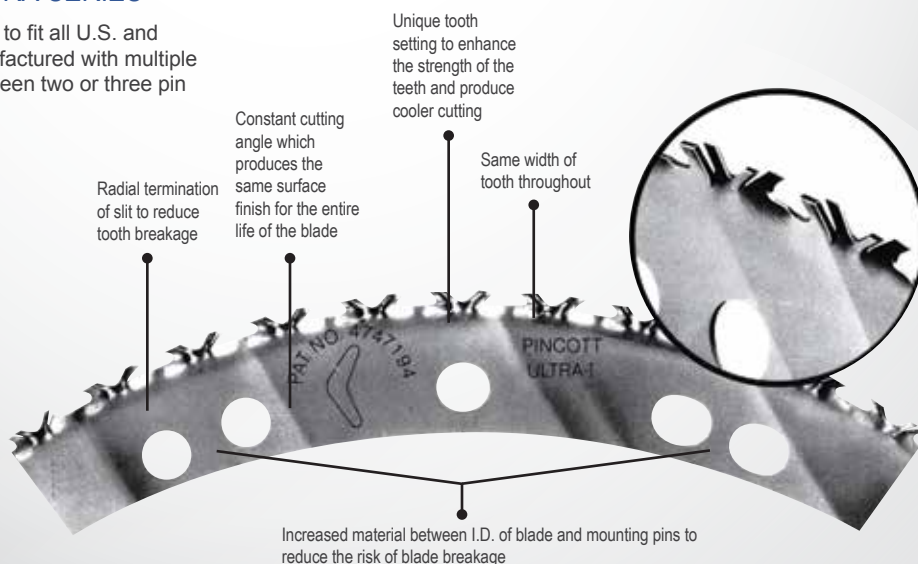
Sio style hub similar to the B&J 111002 used by Michelin. R115 flat rasp 112mm width, 50mm arbor hole, 86mm clamped width, 35 each PTR11520 blades, 25 each R5S38DL spacers, 10 each R5S316SL spacers, 1 intermediate disc and 15 each 112mm pins. PIN516425

PINCOTT® RASP BLADES - ULTRA SERIES

Pincott® buffing rasp blades are designed to fit all U.S. and European buffing machines and are manufactured with multiple stampings to allow interchangeability between two or three pin hubs.

- Exclusive heat treating process
- Reduced tooth breakage
- Faster material removal
- Cooler Running
- No blade warpage
- Lower cost per buffed tire

ASCOT NO.	MC GEE. NO.	DESCRIPTION
616-00111	Ultra1	Fits All 11.5", 5-Segmented Hubs
616-00222	Ultra2	Fits All 9", 4-Segmented Hubs
616-00333	Ultra3	Fits All 11.5", 6-Segmented Hubs



Rasp Blades

Rasp Blades and Spacers (cont.)

EAGLE II BUFFING BLADES

- Fast cutting and long lasting rasps for the best texture in all tire buffing operations
- Tested under all conditions with outstanding results

BUFF HUB COMPONENTS



ASCOT NO.	MFG. NO.	DESCRIPTION	BLADES PER SET
616-11275	121181	Eagle II Refill	Eagle II refills 28 per set

BUFFING BLADES

- **Proven to be the fastest cutting, longest lasting rasps with the best texture for all buffing operations**
- Refills have been tested under all conditions and used on all types of tire buffing equipment with outstanding results
- Can be used in existing Saturn II or R4 hub assemblies
- Fast cutting, long life. Same texture from start to finish
- Quantity: 30 sets per box



Jet Series



Apollo Series



ASCOT NO.	MFG. NO.	DESCRIPTION	TYPE	BLADES PER SET
616-43912	111136	Apollo II	Refill	28
616-43914	111137	Apollo III	Refill	30
616-43920	111140	S115-25	Refill	30
616-43921	111141	S115-20	Refill	30
616-11116	111116	R-4-25	Refill	28
616-01420	111119	R-4-20	Refill	28
616-11521	111107	R-115-20	Refill	25
616-21525	111104	R-115-25	Refill	25
616-43928	121177	Patriot II	Refill	28
616-43940	111172	Gemini II/SII	Refill	28
616-11173	111173	Gemini II/R4	Refill	28

HUB FOR EAGLE II

- Eagle II for use on most Bandag buffers

ASCOT NO.	MFG. NO.	DESCRIPTION
613-12900	111031	Eagle II 9" Dia., 4" W., 1-1/2" Arbor



613-12900

TURBO HOLE APPLICATION

- B & J rasps can be ordered with Turbo cooling channels producing a significant increase in cooling effect and blade performance. These can be retrofitted to all existing B & J rasps.



616-11400

ASCOT NO.	MFG. NO.	DESCRIPTION
616-11400	111400	Turbo Hole Application

HAND RESHARPENING STONE

- Used to hone the inside and outside of curved surfaces
- Wooden Handle



534-80057



ASCOT NO.	MCGEE NO.	DESCRIPTION
534-80057	19206	Hand Resharpener Stone

WOOD HANDLE STEEL BRUSH

- Wood handle steel brush for cleaning rasp blades and spacers



44063

Blade Conversion & Hub Reference

PART NUMBER CONVERSION

HUB SIZE	PINCOTT	B & J	ITALMATIC
9" DIA. 4 SEG.	R4-16	R4-16	I-4-16
9" DIA. 4 SEG.	R4-20	R4-20	I-4-20
9" DIA. 4 SEG.	R4-25	R4-25	I-4-25
9" DIA. 4 SEG.	Ultra II	Apollo II	N/A
9" DIA. 4 SEG.	Ultra IIE	Apollo IIE	N/A
9" DIA. 4 SEG.	Smart 2	N/A	N/A
11.5" DIA. 5 SEG.	R115-20	R115-20	I-115-20
11.5" DIA. 5 SEG.	R115-20	R115-20	I-115-20
11.5" DIA. 5 SEG.	Smart 1	N/A	N/A
11.5" DIA. 5 SEG.	R115-25	R115-25	Long Life 1
11.5" DIA. 5 SEG.	Ultra I	Apollo I	N/A
11.5" DIA. 6 SEG.	P3-20	S115-20	N/A
11.5" DIA. 6 SEG.	P3-25	S115-25	Long Life III
11.5" DIA. 6 SEG.	Ultra III	Apollo III	N/A
11.5" DIA. 6 SEG.	Smart 3	N/A	N/A
1.75" CIRCLE	P5	R5	I-5
3" CIRCLE	P6	R6	I-6

R4 SERIES

28 Blades Per Set



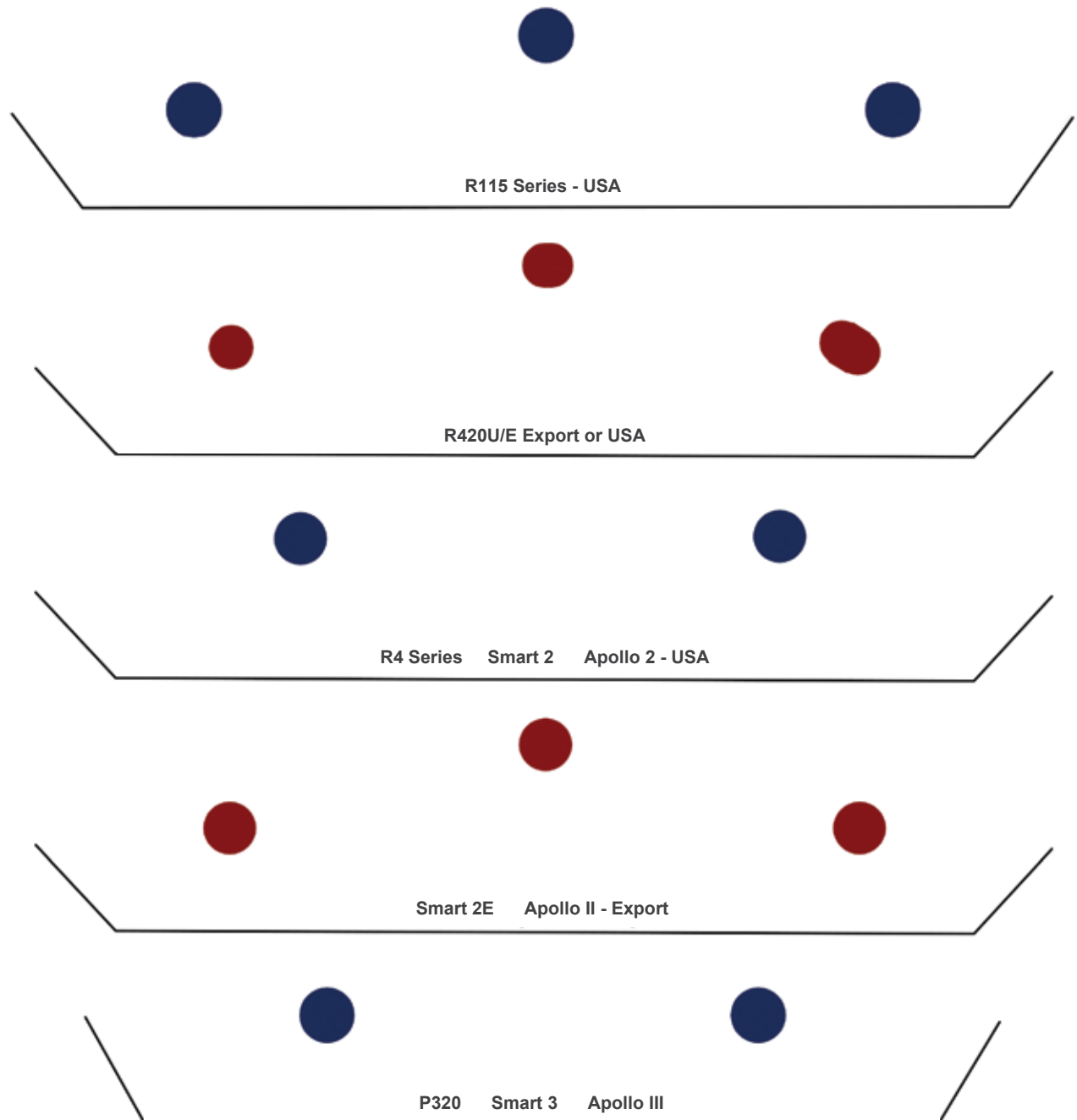
BLADE LIFE TIPS



Blade Matching Guide

If you are looking for alternative blades to fit into your rasp simply position your blade over the pinhole marks below and find the matching blade. Use this reference to choose alternative blades on the respective pages in this catalog.

PLEASE NOTE: Some blades may be multi-fit.



Rasp Blades and Spacers (cont.)

REPLACEMENT PINS FOR ROCKET HUBS

• Special convex style hubs used on buffers must be returned to factory for pin replacement



Replacement Pin for Rocket Hubs

ASCOT NO.	MFG. NO.	PIN DIAM.	PIN LENGTH
613-43934	111207	5/16"	2-1/2"
613-43935	111207	5/16"	3"
613-43936	111207	5/16"	3-1/8"
613-43937	111207	5/16"	3-1/4"
613-43938	111207	5/16"	3-3/8"
613-43939	111207	5/16"	3-1/2"
613-43940	111205	5/16"	3-3/4"
613-43941	111206	5/16"	4"
613-43924	111208	5/16"	4-1/2"
613-43943	111208	5/16"	5"
613-43944	111208	5/16"	5-3/4"
613-43945	111208	5/16"	6"
613-43946	111208	5/16"	6-1/2"
613-43831	111208	5/16"	8"
613-43813	111203	1/4"	3"
613-43812	111203	1/4"	3-3/8"
613-43897	111201	1/4"	3-3/4"
613-43814	111202	1/4"	4"
613-43811	111204	1/4"	6"
613-43815	111204	1/4"	8"

REPLACEMENT PINS & SPACERS FOR ROCKET HUBS

• I-Beam aluminum spacers available in 3/16", 1/4", and 3/8"

ASCOT NO.	MFG. NO.	DESCRIPTION
R-115 STYLE		
613-11205	111205	5/16" Pins / 3-3/4" Long
613-11206	111206	5/16" Pins / 4" Long
613-11207	111207	5/16" Pins / 3-3/8" Long
613-11301	111301	Aluminum I-Beam 3/8" Spacer
613-11302	111302	Aluminum I-Beam 1/4" Spacer
613-11303	111303	Aluminum I-Beam 3/16" Spacer
616-11304	111304	R-115 Aircooled Spacer 3/8"
616-11305	111305	R-115 Aircooled Spacer 1/4"
SATURN II STYLE		
613-11328	111328	Aluminum I-Beam 3/8" Spacer
613-11329	111329	Aluminum I-Beam 1/4" Spacer
613-11330	111330	Aluminum I-Beam 3/16" Spacer
613-11205	111205	5/16" Pins / 3-3/4" Long
613-11206	111206	5/16" Pins / 4" Long
613-11207	111207	5/16" Pins / 3-3/8" Long
SATURN III STYLE		
613-11205	111205	5/16" Pins / 3-3/4" Long
613-11206	111206	5/16" Pins / 4" Long
613-11207	111207	5/16" Pins / 3-3/8" Long
613-11341	111341	Aluminum I-Beam 3/8" Spacer
613-11342	111342	Aluminum I-Beam 1/4" Spacer
613-11343	111343	Aluminum I-Beam 3/16" Spacer
616-11346	111346	Saturn III Aircooled Spacer 3/8"
616-11347	111347	Saturn III Aircooled Spacer 1/4"
EAGLE I STYLE		
613-11380	111380	Aluminum I-Beam 3/8" Spacer
613-11381	111381	Aluminum I-Beam 1/4" Spacer
613-11382	111382	Aluminum I-Beam 3/16" Spacer
613-11205	111205	5/16" Pins / 3-3/4" Long
613-11206	111206	5/16" Pins / 4" Long
EAGLE II STYLE		
613-11383	111383	Aluminum I-Beam 3/8" Spacer
613-11384	111384	Aluminum I-Beam 1/4" Spacer
613-11385	111385	Aluminum I-Beam 3/16" Spacer
613-11205	111205	5/16" Pins / 3-3/4" Long
613-11206	111206	5/16" Pins / 4" Long
R4 STYLE		
613-11201	111201	1/4" Pins / 3-3/4" Long
613-11202	111202	1/4" Pins / 4" Long
613-11310	111310	Aluminum I-Beam 3/8" Spacer
613-11311	111311	Aluminum I-Beam 1/4" Spacer
613-11312	111312	Aluminum I-Beam 3/16" Spacer
616-11313	111313	R4 Aircooled Spacer 3/8"
616-11314	111314	R4 Aircooled Spacer 1/4"



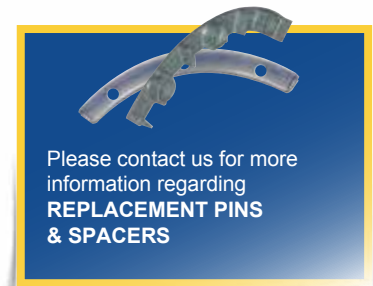
616-11304

Note: For optimum performance replace spacers and pins as a set



To properly rebuild a Saturn II rasp hub order the following components:

QTY.	MFG. NO.	DESCRIPTION
8	111205	5/16" x 3-3/4" Pins
20	111328	3/8" I-Beam Spacers
4	111330	3/16" I-Beam Spacers




When to Replace Hubs, Pins and Spacers?

USE THESE REPLACEMENT TIPS
AS A HELPFUL GUIDE

Don't neglect replacing hubs,
pins and spacers


How to order buffering hubs



Specify:

1. Model
2. Rasp type
3. Hub version/shape
4. Pin size & shape
5. Spacer style
6. Arbor hole
7. Keyway info and drive

Order form:



Scan Above

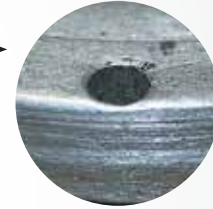


PINS SHOULD BE REPLACED WHEN:

- Worn, bent, or cut
- Deep grooves from blade refills

HUBS SHOULD BE REPLACED WHEN:

- Insufficient material outside the pinholes
- Pinholes worn from loose pins



- !**
- Don't neglect to watch out for the warning signs of when these parts need replacing!

SPACERS SHOULD BE REPLACED WHEN:

- Uneven thickness of spacers
- Rubber dust built up/clogged on spacers
- Visible damage, cracks





PINCOTT® ROTARY GOUGES

- Longer cutting wall and gives longer life!



Features: Deeper cutting surface for increased life • Longer flat wall for greater life with repeated sharpening • Sharper for easier rubber removal • Larger arbor hole flat, to accommodate inside nut, eliminating cracking at the base of the gouge.

ASCOT NO.	MC GEE NO.	DESCRIPTION
613-91501	901501	2" Dia. Heavy Wall, 1/2" Arbor Hole (2 per Box)
	901501N	2" Dia. Thin Wall Notched 1/2" AH (2 per Box)
613-91502	901502	2" Dia. Heavy Wall, 3/8"-24 Thread Arbor Hole (2 per Box)
613-91503	901503	2" Dia. Thin Wall, 3/8" Arbor Hole (2 per Box)
613-91321	901321	1-1/4" Dia. Heavy Wall, 3/8"-24 Thread Arbor Hole (3 per Box)
613-91322	901322	1-1/4" Dia. Thin Wall, 3/8" Arbor Hole (3 per Box)
613-91207	901207	3/4" Dia. Thin Wall, 3/8"-24 Thread Arbor Hole (4 per Box)

ROCKET RASP ROTARY GOUGES



ASCOT NO.	MFG. NO.	DESCRIPTION
616-11612	810612	2" Dia. Thin Wall Notched 3/8" AH (2/set)
616-16101	810610-1	2" Dia. Thin Wall No Notch 1/2" AH (2/set)
616-16102	810610-2	2" Dia. Thin Wall No Notch 3/8" 24 SAE (2/set)
616-16121	810612-1	2" Dia. Thin Wall Notched 1/2" AH (2/set)
616-16122	810612-2	2" Dia. Thin Wall Notched 3/8" 24 SAE (2/set)

TRMG- BUFFING TEXTURE GUIDELINES

A buff texture sheet featuring the six established buffing textures for different rubber applications for buff texture standards, which were established as a prime reference tool for all tire retread and repair shops.

- BT1 - Smooth, velvet-like texture appropriate for inside surfaces receiving chemical repairs.
- BT2 - Smooth, velvet-like texture appropriate for inside surfaces receiving chemical or heat cure repairs and retread applications.
- BT3 - Ideal outside surface texture of skives in light and medium truck and small OTR tires. Preferred for retread applications.
- BT4 - A rougher, buffed surface ideal for outside surface texture of skives in larger OTR tires. Preferred for retread applications.
- BT5 - Progressively rougher texture for specific OTR repair and acceptable for some retread applications.
- BT6 - An extremely coarse texture, unfit for repairs and retread applications.



TRMG

B & J ROCKET SQUIGGLY RASP

- Fast Rubber Removal
- No scorching • Easy Control • Long life
- No regritting costs



ASCOT NO.	MFG. NO.	DESCRIPTION
616-82013	820103	10 Blades w/ Support Plate (10 per Pack)
616-82014	820104	24 Blades w/ Support Plate (24 per Pack)

MINI RASPS

- These Mini Rasps are very efficient when larger amounts of rubber have to be removed quickly, for example in the event of very large repairs they can drastically reduce the required buffout time
- Both Mini Rasp versions are available individually or as complete, ready-to-use kits with adapters for use on quick change chucks



ASCOT NO.	MFG. NO.	DESCRIPTION
539-11075	111075	R-5 Rasp Complete (1 Set of R-5 Refills, 6 Alu Washer, NV 11 Adapter R-5)
539-11134	111134	R-5 Refills (1 Set of 5 Pieces)
539-11076	111076	R-6 Rasp Complete (1 Set of R-6 Refills, 7 Alu Washers, NV 11 Adapter R-6)
539-11133	111133	R-6 Refills (1 Set of 6 Pieces)

PINCOTT® MINI RASPS

ASCOT NO.	MC GEE NO.	DESCRIPTION
539-00005	PTP5	P5 Refill (5 per Box)
539-00006	PTP6	P6 Refill (6 per Box)



Experience the Pincott Difference!

SURFACE PREP // WHEEL BRUSHES, RASPS, CONTOUR WHEELS, & KNIFE BLADES

Wheel Brushes, Power Brushes, Wire Brushes

Wheel Brushes

DUALIFE® KNOT TYPE WIRE WHEEL BRUSHES - STANDARD TWIST

4" Tire Brush • Often used to prepare casings after rubber is removed, and before camelback is applied • .0118 wire, 4" dia x 1" width, 1/2" arbor hole



535-08034

ASCOT NO.	MC GEE NO.	DIA	WIRE SIZE	RPM	ARBOR HOLE
535-08034	08034	4"	.0118"	20,000	1/2"-3/8"
535-08044	08044	4"	.014"	20,000	1/2"-3/8"
535-08075	08075	6"	.0118"	9,000	5/8"-1/2"
535-08085	08085	6"	.014"	9,000	5/8"-1/2"

POLYFLEX® ENCAPSULATED WHEELS- BURGUNDY ELASTOMER (STANDARD)

Minimizes bristle spreading, controls cut depth and bristle wear • **Removable plastic insert for 1/2" Arbor Hole**



535-35240

ASCOT NO.	MFG. NO.	DIA	WIRE SIZE	RPM	ARBOR HOLE
535-35070	35070	2"	.014"	20,000	1/2"
535-35240	35240	2"	.0104"	20,000	1/2"
535-35250	35250	3"	.0118"	20,000	1/2"
*	35800	4"	.02"		5/8"
	42013	3"			3/8"

* With 11 UNC NUT



35800



42013

SKIVING BRUSH

Used for buzz outs to skive injured area after buffing • The stiff brush is designed to cut, not texture
• **Removable plastic insert for 1/2" Arbor Hole**



535-08014

ASCOT NO.	MFG. NO.	DESCRIPTION
535-08014	08014	Twist Tire Wheel 3"; 1/2-3/8" AH; .014 Wire

Options: 08044 or 535-14165

POWER & HAND TUBE BRUSHES

Use for preparing tire injury after drilling or grinding • Solid shaft will not unravel during use
• **Use with low speed tool**



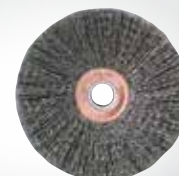
21072

S896

ASCOT NO.	MFG. NO.	DESCRIPTION
535-21072	21072	1/4" Diameter, Wire Size: .004", OAL 3-1/2"
535-21073	21073	3/8" Diameter, Wire Size: .004", OAL 3-1/2"
535-21074	21074	1/2" Diameter, Wire Size: .005", OAL 3-1/2"
535-21076	21076	3/4" Diameter, Wire Size: .006", OAL 3-1/2"
	S896	Skive Brush 1/2" 13mm

COPPER CENTER WIRE WHEEL BRUSHES (WIRE FILL)

A crimped brush • Provides flexible brushing action for light duty cleaning and deburring application



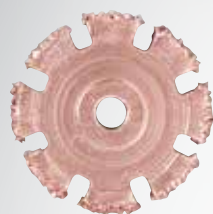
535-15443

ASCOT NO.	MFG. NO.	DIA	WIRE SIZE	RPM	ARBOR HOLE
535-15322	15322	1-1/2"	.0104"	20,000	3/8"
535-15443	15443	2"	.008"	20,000	1/2"
535-15463	15463	2"	.0118"	20,000	1/2"-3/8"
535-15533	15533	3"	.006"	20,000	1/2"-3/8"
535-15543	15543	3"	.008"	20,000	1/2"-3/8"
535-15563	15563	3"	.0118"	20,000	1/2"-3/8"

Slotted Finishing Rasp

2" RASPS

Air-cooled and ventilated to reduce heat and build-up



2203N
36 Grit



2206N
16 Grit



2207N
36 Grit



2208N
16 Grit



2241N
36 Grit

ASCOT NO.	MCGEE NO.	DIA. IN.	MM	WIDTH IN.	MM	GRIT
539-02203	2203N	2	50.8	3/16	4.7	36
539-02204	2204N	2	50.8	3/16	4.7	16
539-02205	2205N	2	50.8	3/8	9.5	36
539-02206	2206N	2	50.8	3/8	9.5	16
Radiused						
539-02207	2207N	2	50.8	1/2	12.7	36
539-02208	2208N	2	50.8	1/2	12.7	16
539-02209	2209N	2	50.8	3/4	19	36
539-02210	2210N	2	50.8	3/4	19	16
—	2221N*	1-1/2	38	1/8	3	16/36
—	2241N	2	50.8	1	28	36

*Special Order

**Regrits remove "N" from part number

SAVE
MONEY!



Get your
bucket today!

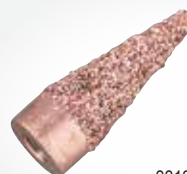


Regritting Available**

Don't discard your old Tungsten Carbide Rasps. New Tungsten Carbide Grit bonded to your old worn rasps gives them a "new" rasping surface and saves you money!. To order Regrits, contact your McGee representative and specify grit.

CONE RASPS

Arbor Hole 3/8-24 SAE thread



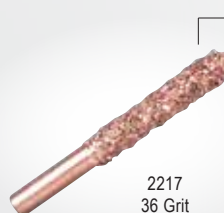
2211
36 Grit



2212
16 Grit

ASCOT NO.	MCGEE NO.	BASE DIA. IN.	MM	LENGTH IN.	MM	GRIT
539-02211	2211	1	19	2	51	36
539-02212	2212	1	19	2	51	16
539-02213	2213	3/4	19	4	102	36
539-02214	2214	3/4	19	4	102	16

PENCILS



2217
36 Grit



2218
16 Grit

ASCOT NO.	MCGEE NO.	SHAFT DIA. IN.	MM	LENGTH IN.	MM	GRIT
—	2501	1/8	3	2-1/2	64	36
—	2502	1/8	3	2-1/2	64	16
42222	K343A	1/4	6	2-1/4	57	36
1/4" Cutting Accuracy - recessed 2217 & 2218						
539-02217	2217	1/4	6	2-1/2	64	36
539-02218	2218	1/4	6	2-1/2	64	16
—	2505	1/4	6	2-1/2	64	36
—	2506	1/4	6	2-1/2	64	16
Tapered						
—	2507	1/4	6	2-1/2	64	36
42725	2508	1/4	6	2-1/2	64	16

Not available for regrit

BALL RASPS



MCGEE NO.	SHAFT LENGTH IN.	MM	SHAFT DIA. IN.	MM	BALL DIA. IN.	MM	GRIT
220016	2	51	1/4	6	3/4	19	16
220036	2	51	1/4	6	3/4	19	36

11 SURFACE PREP // WHEEL BRUSHES, RASPS, CONTOUR WHEELS, & KNIFE BLADES

Tungsten Carbide Tools & Accessories

Rasps

Arbor & Grit:

Some of the rasps may be ordered in varying arbor holes and grit specifications.

Note: Use 36 grit and up for rubber finishing and cleaning. Use 16 grit for buffing, skiving, and cutting.

Radiused Faced Rasps

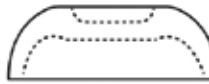
Non-Vented Radiused Cup Rasps

• Solid with heavy-duty machined core. 3/8"-24 threaded arbor hole

Vented & Non-Vented Curved Cup Rasps



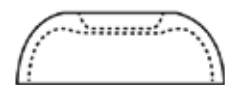
Flat Faced Rasps



Vented & Non-Vented Contour Cup Rasp



Vented Radiused Cup Rasps



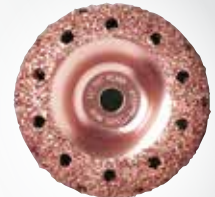
BUFFING WHEELS TUBE & INNERLINER

ASCOT NO.	MFG. NO.	DESCRIPTION
539-00033	33	3/8"-24 Arbor for Mounting Buffing Wheels
539-00788	788	(2) No. BC1 Buffing Wheels Mounted Back-to-Back On No. 33 Arbor
539-10001	BC1	BC1 Buffing Wheel 36 Grit



VENTED AND NON-VENTED RADIUS CUP RASPS

Other grit sizes and arbor holes available upon request • Add SAE to part number for threaded arbor



TCW31536
36 Grit

RPG AIR POWERED TIRE REPAIR VACUUM

Quick change from blow to vacuum function • KIT INCLUDES: Plastic body gun, dust bag, 2 extension tubes, shop brush, flat tube, tiny tube

BLOW/
VACUUM
FUNCTIONS



537-00003

Aluminum body design available
798RM - AIR VACUUM WITH WATER HOSE AND BAG



ASCOT NO.	MFG. NO.	DESCRIPTION
537-00003	VGB2	RPG Air Powered Tire Repair Vacuum

PIRANHA CARBIDE CUTTER

Ideal durable carbide rasp for removing large amounts of rubber • Stackable, just add washers between them and use a wider width carbide for big jobs • Not regritable • Use the SLP9212 adapter.



SLP9212

OTHER
Q/C
OPTIONS
AVAILABLE ON
PAGE 46

ASCOT NO.	MFG. NO.	DESCRIPTION	GRIT	DIAMETER	WIDTH
	P20816	Piranha Rasp	16	2"	1/2"
	P20836	Piranha Rasp	36	2"	1/2"
17309212	SLP9212	Quick Change Adapter			

ANGLE FACED DISK

Air cooled solid steel • 3/8" wide



MCGEE NO.	IN.	DIA. MM	ARBOR HOLE	GRIT
DSK45836	4	102	5/8	36
DSK738	6-3/4	171	7/8	36
DSK73816	6-3/4	171	7/8	16

36 Grit

ASCOT NO.	MCGEE NO.	IN.	DIA. MM	IN.	WIDTH MM	ARBOR HOLE	GRIT
539-06260	TCW21016	2	51	1	25	3/8"	16
539-06261	TCW21036	2	51	1	25	3/8"	36
—	TCW21046	2	51	1	25	3/8"	46
—	TCW21060	2	51	1	25	3/8"	60
539-06361	TCW31016	3	76	1	25	3/8"	16
539-06360	TCW31036	3	76	1-1/4	32	3/8"	36
—	TCW31046	3	76	1-1/4	32	3/8"	46
539-06311	TCW31516	3	76	1-1/2	32	3/8"	16
539-06310	TCW31536	3	76	1-1/2	38	3/8"	36
—	TCW31546	3	76	1-1/2	38	3/8"	46
—	TCW31560	3	76	1-1/2	38	3/8"	60
—	TCW41516	4	102	1-1/2	38	3/8"	16
—	TCW4151612	4	102	1-1/2	38	1/2"	16
—	TCW41536	4	102	1-1/2	38	3/8"	36
—	TCW4153612	4	102	1-1/2	38	1/2"	36
—	TCW41546	4	102	1-1/2	38	3/8"	46
—	TCW41560	4	102	1-1/2	38	3/8"	60
—	TCW4156012	4	102	1-1/2	38	1/2"	60
—	TCW5151612	5	127	1-1/2	38	1/2"	16
—	TCW5153612	5	127	1-1/2	38	1/2"	36

Add SOLID for non-vent version

DONUT CURVED RASPS

Other donut diameters, grit sizes and arbor holes available upon request • Add SAE to part number for threaded arbor



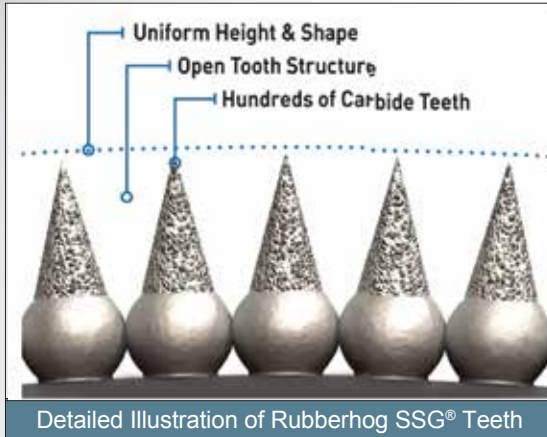
TDW51016

ASCOT NO.	MCGEE NO.	IN.	DIA. MM	IN.	WIDTH MM	ARBOR HOLE	GRIT
—	TDW31016	3	76	1	25	3/8"	16
—	TDW31036	3	76	1	25	3/8"	36
—	TDW31516	3	76	1-1/2	38	3/8"	16
—	TDW31536	3	76	1-1/2	38	3/8"	36
—	TDW41016	4	102	1	25	3/8"	16
—	TDW41036	4	102	1	25	3/8"	36
—	TDW51016	5	127	1	25	1/2"	16
—	TDW51036	5	127	1	25	1/2"	36

Tire Repair Tools & Accessories



RUBBERHOG® TIRE REPAIR TOOLS



Rubberhog® features innovations from the leader in the industry. The Rubberhog Original SSG coating uses the best technology to ensure peace of mind • Buffs cooler, no scorching • Fantastic wear life; costing you less per repair • Better surface texture for a safer bond • Faster material removal, for a quicker repair

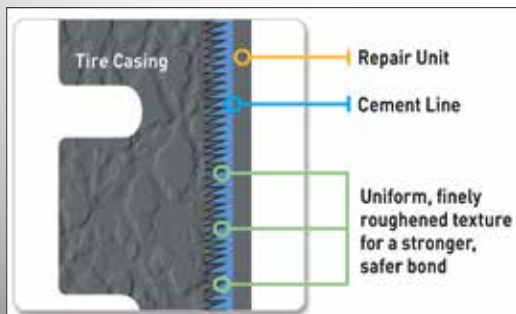
SSG Tooth Size Selection

Rubberhog SSG Structured Carbide Teeth provide both fast stock removal and superior textures, easily controlled by the pressure applied. A direct comparison cannot be made between SSG teeth and standard carbide grit, but here is a guide for replacement choices.

SSG #390 replaces #16 - #36 grit

SSG #230 replaces #46 grit

SSG #170 replaces #60 grit



Rubberhog SSG produces superior, safer repairs!

FLARED CONTOUR WHEELS

Unique Profile

Flared Contour Wheels properly match the shape of the tire • Provides wide, level contact with surface • Efficient use of the entire tool • Easier to use - less operator fatigue • Reduced buffing time



VERY LONG LIFE

LOWER COST PER REPAIR

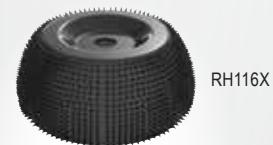


ASCOT NO.	MFG. NO.	DESCRIPTION
538-10700	RH107	2-1/2" Contour Wheel, 3/8" Bore, SSG 170
538-10900	RH109	2-1/2" Contour Wheel, 3/8" Bore, SSG 230
538-11100	RH111	2-1/2" Contour Wheel, 3/8" Bore, SSG 390
538-11200	RH112	3" Contour Wheel, 3/8" Bore, SSG 170
538-11400	RH114	3" Contour Wheel, 3/8" Bore, SSG 230
538-11600	RH116	3" Contour Wheel, 3/8" Bore, SSG 390
538-11800	RH118	3-1/2" Contour Wheel, 3/8" Bore, SSG 170
538-12000	RH120	3-1/2" Contour Wheel, 3/8" Bore, SSG 230
538-12200	RH122	3-1/2" Contour Wheel, 3/8" Bore, SSG 390
538-11601	RH116X	3" Extreme Flared Contour Wheel MCM90

Extreme Flared Contour

Wheel MCM90 Rapid repair removal with course texturing • Heavy buffing without head or loading • Extremely long life!

Application: repair removal, section repair, post-rasp texturing of low spots along crown (skiving section) and clean-up of sidewall repairs (final inspection)



OTHER
EXTREME
OPTIONS



POLYPLUG INSERTS FOR FLARED CONTOUR WHEELS

Compensates for mounting inaccuracies • Reduces vibration for smoother operation • Quieter and more comfortable • Protects wheel from damage • Improves life



ASCOT NO.	MFG. NO.	DESCRIPTION
538-15200	RH152	2-1/2" Dia., 3/8" Bore,
538-15400	RH154	3" Dia., 3/8" Bore,
538-15600	RH156	3-1/2" Dia., 3/8" Bore,

REUSEABLE

13 SURFACE PREP // WHEEL BRUSHES, RASPS, CONTOUR WHEELS, & KNIFE BLADES

Buzzout Wheels, Shaft Tools



2" BUZZOUT WHEELS

Fully rounded

profile • Free-cutting and long lasting • Use on bias tires, or for texturing exterior section repairs; *not recommended for contact with steel cord*



SKIVE
& SHAPE

ASCOT NO.	MFG. NO.	DESCRIPTION
538-30000	RH300	1/4" Width, SSG 230 (Medium)
538-30200	RH302	1/4" Width, SSG 330 (Coarse)
538-30400	RH304	3/8" Width, SSG 230 (Medium)
538-30600	RH306	3/8" Width, SSG 330 (Coarse)
538-30800	RH308	1/2" Width, SSG 230 (Medium)
538-31000	RH310	1/2" Width, SSG 330 (Coarse)
538-31200	RH312	3/4" Width, SSG 230 (Medium)
538-31400	RH314	3/4" Width, SSG 330 (Coarse)

1/4" & 1/8" SHAFT ROTOR SAWS

Excellent for high-tread skiving

FAST
& EASY
TO
CONTROL



ASCOT NO.	MFG. NO.	DESCRIPTION
538-61900	RH619	1-3/8" Dia. X 1/4" Shaft, SSG 330 (Coarse)
538-00340	RS-34-E	3/4" Dia. X 1/8" Shaft, SSG 170 (Fine)

1/4" SHAFT NAIL HOLE REAMERS

FOR
BIAS
TIRES

Designed for plug repairs on fabric tires only • Use with tools not to exceed 5000 rpm • Use with appropriate safety and eye protection

ASCOT NO.	MFG. NO.	DESCRIPTION
538-62600	RH626	1/4" Dia. X 3", SSG 330 (Coarse)



1/4" SHAFT SPHERES

Designed for skiving and texturing of smaller exterior section repairs; also utilized on smaller buzzout repair • Use with appropriate safety and eye protection • Best application chamfering liner around nail injuries

ASCOT NO.	MFG. NO.	DESCRIPTION
538-60100	RH601	5/8" Dia., SSG 330 (Coarse)
538-60300	RH603	7/8" Dia., SSG 330 (Coarse)
538-60500	RH605	1-1/8" Dia., SSG 330 (Coarse)



CHAMFER
AND
TEXTURIZE

1/4" SHAFT TAPERS

Designed for skiving and texturing of smaller exterior section repairs; also utilized on smaller buzzout repair • Use with appropriate safety and eye protection

ASCOT NO.	MFG. NO.	DESCRIPTION
538-61100	RH611	5/8" Dia., SSG 330 (Coarse)
538-61300	RH613	7/8" Dia., SSG 330 (Coarse)



FOR
HIGH-
TREAD
SKIVING

1/8" SHAFT REPAIR KIT

Perfect for very small repairs

ASCOT NO.	MFG. NO.	DESCRIPTION
538-63500	RH635	4-Tool Kit



Kit Contains:

HEAD SHAPE	DIAMETER	HEAD WIDTH	COATING
Taper	1/8"	7/8"	SSG 170 (Fine)
Taper	1/4"	5/8"	
Rotor Saw	1/2"	1/8"	
Sphere	3/4"	3/4"	

DETAIL
SMALL
REPAIRS

Please note: texturizing for rubber bonding should be done at 5000 RPM or below.

Tire Repair Tools & Accessories



RETREADING BUFFER SIDEWALL WHEELS

Designed for shoulder and sidewall preparation • Used on manual or automatic sidewall buffers • Fast and effective removal of oxidized rubber • Used with or without traditional wire brushes • Excellent durability, reducing your cost per buff • Provides a uniform texture maximizing rubber-to-rubber bond

EXCELLENT TEXTURES

FAST AND EFFECTIVE



RH708



705



RH129



705KIT



705 in action
For Matteuzzi manual sidewall buffers

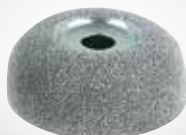
ASCOT NO.	MFG. NO.	DESCRIPTION
	RH705	6" x 2-1/8" Widebody Donut Wheel, SSG 390 (Coarse) - (Requires 705KIT)
	705KIT	Matteuzzi specific not for top-down auto sidewall buffers
538-70750	RH707-50	6" x 50mm Donut Wheel, SSG 460 (Very Coarse)
538-70800	RH708	6" x 1-1/2" Donut Wheel, SSG 390 (Coarse)
538-70850	RH708-50	6" x 50mm Donut Wheel, SSG 390 (Coarse)
538-12900	RH129	4" x 3/4" Contour Wheel, SSG 390 (Coarse) without heat or loading

DISC/DISH SIDEWALL WHEELS

For angle head machines • Remove over-build, smooth, and flatten • These angle-grinder discs offer a more efficient alternative when working on larger high-tread repairs and section repairs • The wide, semi-flat shape covers more area • Fit popular pneumatic or electric angle grinders • More precise control, by using a two-handed grip • Easily smooth, texturize, or rapidly remove rubber • Cool operation, and long life.

ASCOT NO.	MFG NO.	OD	BORE	COATING	COLOR
538-42223	SD4120230	4-1/2" (114mm)	7/8" (22.2mm)	Fine (230 grit)	Gold
538-41270	SD412X70	4-1/2" (114mm)	7/8" (22.2mm)	Medium (MCM 70)	Teal
538-51290	SD412X90	4-1/2" (114mm)	7/8" (22.2mm)	Coarse (MCM 90)	Blue
538-41212	SD412X120	4-1/2" (114mm)	7/8" (22.2mm)	Very Coarse (MCM120)	Black
538-01160	1160	7" (178mm)	7/8" (22.2mm)	Coarse (390 grit)	Silver
538-01163	116XV	7" (178mm)	7/8" (22.2mm)	Very Coarse (MCM120)	Black
538-01161	1160X	7" (178mm)	7/8" (22.2mm)	Coarse (MCM 90)	Blue

BANDAG SIDEWALL BUFFING CUP



538-12900

ASCOT NO.	MCGEE NO.	DESCRIPTION
538-12900	RH129	4" Buffing Cup, 3/4" Arbor Hole, SSG 390

ROTARY KNIFE BLADES

Cuts and textures ends of tread • Fits popular tread builders

FOR PRE-CURED TREAD



538-10020



538-10134



538-10013

ASCOT NO.	MFG NO.	OD	BORE	GRIT	APPLICATION
538-10134	RH100-GEG-134	6" (152.4mm)	1-3/4" (44.4mm)	150	Salisbury and Oliver builders
538-10034	RH100-GEG-134-80	6" (152.4mm)	1-3/4" (44.4mm)	80	Salisbury and Oliver builders
538-10013	RH100-GEG-138	6" (152.4mm)	1-3/8" (34.9mm)	150	Cahill builders
538-11138	RH100-GEG-138-80	6" (152.4mm)	1-3/8" (34.9mm)	80	Cahill builders
538-10020	RH100-GEG-200	6" (152.4mm)	2" (50.8mm)	150	Bandag model 5110, most Matuzzi builders
538-10028	RH100-GEG-200-80	6" (152.4mm)	2" (50.8mm)	80	Bandag model 5110, most Matuzzi builders
538-20011	RH200-GEG-200-80	7" (177.8mm)	1.259" (32 mm)	150	Michelin builders



538-42239



SD412X120



SD4120230



Disc Profile

(Dish Wheel Available DW412)

SIDEWALL WHEEL

• **Perfectly balanced, longest wearing** • OE brush designed to fit Marangoni and Matteuzzi buffers • Fits over adapter designed to fit 20mm shaft • Bandag brushes available - special order • Call for brush



13229736

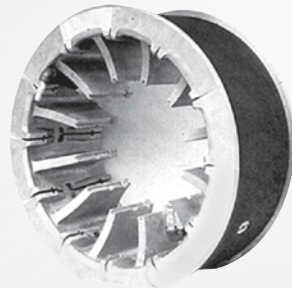
MCGEE NO.	DESCRIPTION	DIAMETER		ARBOR HOLE	FACE WIDTH	
		IN.	MM		IN.	MM
13229736	Side Wall Buffing wheel 36 Grit	8	200	60	1.5	38

15 RETREAD ACCESSORIES // RIMS & RELEASE LINERS

Expandable Rim Assemblies, Retread Release Liner

Retread Accessories (cont.)

EXPANDABLE RIM ASSEMBLIES AND REPLACEMENT BELTS

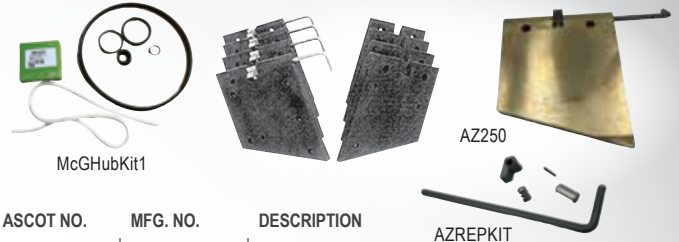


EHL32
recommended
hub lube

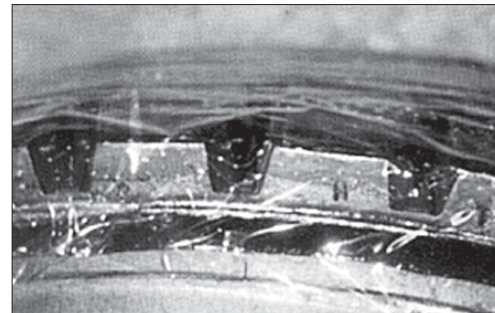
EXP. RIM ASSEMBLIES ASCOT NO.	EXP. RIM ASSEMBLIES MFG. NO.	RIM SIZE	BEAD WIDTH	REPL. BELTS ASCOT NO.	REPL. BELTS MFG. NO.
613-39020	309020	12-14"	5"	613-28260	309510
613-00436	309030	13-16"	6-3/8"	613-00660	309520
613-33379	309962	13-16"	7-1/2"	613-33382	309521
613-28081	309963	13-16"	11-3/8"	613-28160	309522
613-32769	309942	14-17"	6"	613-32773	309541
613-00937	309140	14-17"	7-1/8"	613-02701	309540
613-28313	309150	14-17"	9-1/4"	613-02821	309550
613-00938	309952	14-17"	11-3/8"	613-02702	309560
613-00465	309040	17-20"	6-1/2"	613-01653	309570
613-32774	309202	17-20"	8-1/4"	613-32778	309242
613-28271	309101	18-20"	7-5/8"	613-33717	309354
613-00470	309220	17-20"	13-1/4"	613-01332	309580
613-00674	309230	18-20"	16-3/8"	613-02092	309356
613-23800	309602	20-22.5"	8-1/4"	613-33092	309622
613-00466	309050	20-22.5"	9"	613-01715	309610
613-32822	309183	20-22.5"	11-3/4"	613-32826	309612
613-33162	309021	20-22.5"	14-1/2"	613-33007	309491
613-25718	309190	22-24.5"	7-1/2"	613-25839	309600
613-33093	309282	22-24.5"	8-1/4"	613-33094	309302
613-00846	309060	22-24.5"	9"	613-02533	309630
613-00467	309070	22-24.5"	13-3/8"	613-01955	309640
613-33564	309912	22-24.5"	14-1/2"	613-33568	309641
613-00839	309913	22-24.5"	18-1/2"	613-02516	309643
613-00699	309490	23-25"	13-3/8"	613-11955	309500
613-00705	309890	27-29"	14"	613-02184	309644

MC GEE COMPANY OFFERS A HUB REBUILD PROGRAM – ASK YOUR REP TODAY

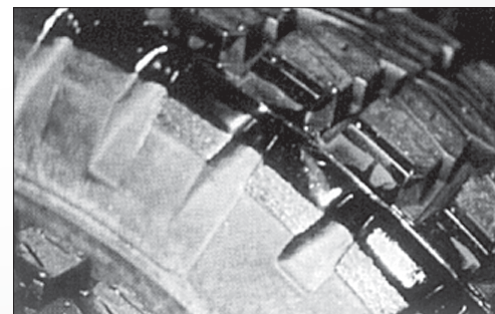
EXPANDABLE HUB REPLACEMENT STEMS



ASCOT NO.	MFG. NO.	DESCRIPTION
	309250	Rear Housing
	309260	Front Housing H. D.
	30923	Garner Spring w/hooks HD 28-1/4" x .255 for Expando Hub
	309112	Metal Alloy Stem Sets
613-09111	309111	Stem Set, 8 Plain 4 Lock
613-19111	309111L	Stem Set, 12 Lock
	729617	Stem, each, non-locking
	309270F	CRS Piston with flats w/bushing & o rings
	McGHubKit1	O-ring kit for national hubs on Matteuzzi & Bandag Equipment (309001N with stems 309000N is MRT vers)
	AZ250	AZ Bronze Alloy Locking Stem Set of 12 Exp Hub
	AZREPKIT	Locking Stem Repair Kit. For plastic stems use 309000N (National) or 309000MRT



HIGH TEMP
FILM
AVAILABLE



AMERICAN
MADE

Poly Ease Retread Release Liner in use.

POLY EASE RETREAD RELEASE LINER

• American made perforated polypropylene film is specified to soften at 311°F and melt at 328°F • For low temp bonding chambers • .002 mil thickness • Custom widths are also available • High temp film available

MC GEE PRODUCT	VENDOR PRODUCT NUMBER	DESC1	DESC2	WIDTH IN.	LENGTH FT	THICKNESS MM	MELTING	QTY/BX	WEIGHT/ ROLL
PP12HDR	TEPF001	POLY 12" RCP .002 MIL	HD 2700' ROLL	12"	2700	0.002	Low temp Bandag	2	26 lbs
PP15HDR	TEPF002	POLY 15" RCP .002 MIL	HD 2700' ROLL	15"	2700	0.002	Low temp Bandag	2	32 lbs
PP18HDR	TEPF003	POLY 18" RCP .002 MIL	HD 2700' ROLL	18"	2700	0.002	Low temp Bandag	1	38 lbs
TNPF001	TNPF001	POLY HI TEMP 12" .75 MIL	4000' ROLL	12"	4000	0.75	300 °F	1	18 lbs
TNPF002	TNPF002	POLY HI TEMP 15" .75 MIL	4000' ROLL	15"	4000	0.75	300 °F	1	23 lbs
2200310	TNPF003	POLY HI TEMP 16" .75 MIL	4000' ROLL	16"	4000	0.75	300 °F	1	25 lbs
TNPF004	TNPF004	POLY HI TEMP 18" .75 MIL	4000' ROLL	18"	4000	0.75	300 °F	1	27 lbs

Tire Appearance



Sprayer info see page 45

BLACK TIRE PAINT

- Water based, premixed or concentrated • **Specially formulated black paint for improved appearance, coverage and tire adhesion** • Makes retread and used tires look like new • Creates a clean black satin finish • Covers crayon marks and dirt • Dries quickly with low odor, will not rub off, even when wet
- Available premixed and ready for use, or in economical concentrate which dilutes with water



WB50

MFG. NO.	DESCRIPTION
HD5	Tire Paint HD Concentrate Water Base 10:1 5 GAL
WB50	Tire Paint Concentrate Water Base 4:1 5 GAL
NL640	Tire Paint New Look Veneer RTU Water Based 5 GAL
E839	Stoners Premix Water Base Paint 5 gal.
E844	Stoners Concentrate Paint Mix 3:1 5 gal.
F11800	Murphy's Black Tire Paint RTU 5 gal.
F11801	Murphy's Black Tire Paint RTU 55 gal.



NL640

LOOKS LIKE NEW.



TIRE SHINE

REMA SHINE is quick and easy to use and gives your tires a deep long lasting shine.

- Water-based silicone dressing • Ideal for tires and exterior moldings • Excellent for interior plastic and vinyl trim • Provides high gloss restoring original beauty • Pleasant odor and VOC compliant
- Condition All Tire Shine
 - Water based non flammable vinyl and rubber dressing that contains no alcohol or solvents that cause drying and cracking of vinyl and rubber.
 - Contains Anti static inhibitors & micro emulsion conditioners to aid in UV protection.

GIVES TIRES
A LASTING
SHINE



395-10100

ASCOT NO.	MFG. NO.	DESCRIPTION
395-10100	101000110	REMA Shine
	SS8001	Conditional All Tire Shine

BLACK-OUT BLACK TIRE PAINT

- **Ready to use water based black tire paint** • Restores the original appearance of retreaded and used tires • Covers crayon marks, scuffs and dirt to give the tire a new fresh look • Works with machine or hand application • Compatible with tire painting machines



497-00005

ASCOT NO.	MFG. NO.	DESCRIPTION
497-00005	Blackout-5	Black-Out Black Tire Paint (5-Gallon)
497-00055	Blackout-55	Black-Out Black Tire Paint (55-Gallon)

EXPANDABLE HUB LUBE

- **Excellent lubricant for expandable hubs** • Ready-To-Use formula • Quick/easy application • Petroleum/Silicone free • No mess or product build-up on equipment • 70+ tires per application • Specifically designed for use for expandable hubs utilized in retread shops



647-00032

ASCOT NO.	MCGEE NO.	DESCRIPTION
647-00032	EHL32	Expandable Hub Lube (32 Oz. Spray Bottle)

17 CONSUMABLES // TIRE APPEARANCE, GUM, & CEMENT

Cushion Gum, Stripping Stock, Rope Rubber, Rubber Solvent, Cement



Retread Consumables

REMA MTR CUSHION GUM

• REMA TIP TOP offers a variety of uncured rubber MTR products with excellent green tack and outstanding flow & vulcanization characteristics. • MTR Cushion Gum and Rope Rubber products are designed for Heat Cure Systems with lamination of REMA TIP TOP repair units and filling prepared injuries. • MTR Rubber products perform best when used with REMA TIP TOP MTR Solution.



ASCOT NO.	MFG NO.	DESCRIPTION
	18ER	Rema 10 LTC Extruder Rope Rubber 3/8" diameter 30 Lbs Box
	TRR	Tech Rope Rubber 25 lbs - Spool 3/8"
526-55610	5561	MTR Cushion Gum, 24' x 10" x 0.050", 6 Lbs - Rema.
526-55630	5563	MTR Cushion Gum, 2600mm x 30mm x 3mm, 2 Lbs. - Rema

STRIPPING STOCK

• **Stripping Stock curing temperatures 914, 074, 440** • Free flowing quality stock for stripping edges of tread rubber to cover excess buffed surfaces • **APPLICATIONS:** Used on sidewalls to improve appearance • 25 lb. box • Available at any gauge & width

Call for details!



REMABOND AQUAS CEMENT

Environmentally Friendly Water-Based Latex Cement • Aquas Cement is specially formulated to be used in the application of treads in tire retreading operations • It is a higher viscosity formulation designed for spray application directly onto the substrate.

Zero VOCs with Excellent • Bonding Strength • High Green Tack • Formulated for Heat & Pressure type cures (Do not use for Room Temperature cure conditions!) • Promotes strong bond between the tread and tire.



101001643

Ask us about other environmentally friendly options!

MULTIPLE TEMPERATURE RUBBER (MTR) & BLACK CUSHION GUM REPAIR PRODUCTS

REMA TIP TOP offers a variety of uncured rubber MTR products with excellent green tack and outstanding flow & vulcanization characteristics • MTR Cushion Gum and Rope Rubber products are designed for Heat Cure Systems with lamination of REMA TIP TOP repair units and filling prepared injuries • MTR Rubber products perform best when used with REMA TIP TOP MTR Solution



ASCOT NO.	MFG NO.	DESCRIPTION
526-51618	5161180	MTR Cut Resistant Rope Rubber, OTR Repairs, 26.5 Lb. Pail
526-55672	5567L	MTR Rope Rubber, OTR Repairs, 26.5 Lb. Pail

JET RUBBER SOLVENT

• **Pure Aliphatic Hydrocarbon** • Free from oils and impurities • **APPLICATIONS:** For diluting or thinning heavy viscosity cements and tire paint; For cleaning buffed retread and repair surfaces; For freshening cushion gum and other uncured rubber stocks

ASCOT NO.	MFG. NO.	DESCRIPTION
633-50105	CI31-5GAL	5-Gallon Container
633-50154	CI31-54GAL	54-Gallon Container



633-50105

VULCANIZING CEMENT

BRUSH TYPE: An excellent repair cement • Contains special additives to bond to exposed cords such as nylon, rayon, fiberglass, polyester & polyaramid • Use within 15 minutes on exposed steel for best adhesion • Superior tack and excellent cured adhesion

SPRAY TYPE: An all purpose cement for both hot capping and precure retreading • Also used for repairing • High tack cement • Excellent cured adhesion and provides superior bond and tack • Remabond 101001613 5 gal



101001613 - 5 gal

MFG. NO.	TYPE	DESCRIPTION
101001603	Brush	Remabond Vulcanizing cement 5 gal Brush Type
101001613	Spray	Remabond Vulcanizing cement 5 gal Spray Type
CH031GAL	Brush	Jet Vulcanizing Cement 1 gal Brush Type
CH005GAL	Spray	Jet Vulcanizing Cement 5 gal Spray Type

REMASOL RUBBER SOLVENT (FLAMMABLE)

• **Best for removing contaminants from rubber surfaces and for tire injury repair preparation** • Totally compatible with both REMABOND Brush Cement and REMABOND Spray Cement • Fast drying • Contains no carcinogens • 101001633-Remasol 5 gallon



101001633

Plunger can available for solvents 10308 - 1 Gal

Envelope Performance

SURE SHOT PRESSURE SPRAYERS

- Air pressurized and refillable • Environmentally safe, eliminates aerosol usage • For brake and parts cleaner, penetrating oils, lubricants, degreasers, solvents • **Made in USA**



ASCOT NO.	MC GEE NO.	DESCRIPTION
632-00010	KM10	Complete Repair Kit for Model A Sure Shot Sprayers
632-01002	2000	Sure Shot Black Enameled Steel Sprayer w/ Adjustable Nozzle
632-02400	M2400S	Anodized Aluminum Sprayer

ROBBINS ENVELOPE LUBE

- Spray on inside of the envelope, spray on while envelope is hot to dry faster, spray after first cure and then every 30 cures or as needed
- Quart container is a convenient spray bottle • **Ready to use, no dilution required**

Approved by MRT, Goodyear, Bandag, and Oliver



810082



800026

ASCOT NO.	MFG. NO.	DESCRIPTION
	800026	1HD Long Lasting Trigger Sprayer
	810082	32 Oz. Spray Bottle HD

ASCOT NO.	MFG. NO.	DESCRIPTION
647-05611	5611	Robbins Envelope Lube (1-Quart)
647-05612	5612	Robbins Envelope Lube (1-Gallon)
647-05613	5613	Robbins Envelope Lube (5-Gallon)

ENVELOPE REPAIR KIT

- Everything needed to repair and extend the life of envelopes • Includes roll of cushion gum, cement, and instructions • Note, best practice to use same brand of repair as envelope

- ERV Envelope repair Vulcanizer is operated unit makes all types of envelope, curing-tube and inner-tube repairs • Saves expensive replacement costs with silicone rubber piston pad provides totally even pressure, resulting in a smooth, feathered patch
- Built-in timer turns off heat, air flow and electricity for total unattended shutdown

SPECIAL ORDER

MFG NO.	DESCRIPTION
2037	Robbins Envelope Repair Kit - Two Roll
2038	Robbins Envelope Repair Kit - One Roll
EA40	Jet Envelope Repair Gum - One Roll (Cement needed)
CH08	Jet Repair Cement 8.4 oz
T148	Envelope Repair Vulcanizer 110V or 220V available

Envelope Repair:



Scan Above



SPRAYER W/ VITON SEAL 1.5 LITER

- 1.5 liter capacity • Easy to use compression action sprayer • Ergonomic design with strong translucent tank with level indicator
- Adjustable spray nozzle • Great with Ascot bead buster, Skid or other harsh chemicals



MC GEE NO.	DESCRIPTION
AS32	Sprayer w/Viton Seal 1.5 Liter

MOLD LUBRICANT (CONCENTRATED)

- Release molded retreads with ease and keep molds clean at the same time
- This non-flammable, odorless formula allows rubber to flow freely and prevents carbon buildup • Produces a superior satin finish with no staining • Economical concentrate may be diluted with up to 15 parts water to one part lubricant • Silicon



MC GEE NO.	DESCRIPTION
ML1	Mold Lubricant (1-Gallon)
ML5	Mold Lubricant (5-Gallon)



19 ENVELOPES // SPRAYERS, LUBE, REPAIR, ENVELOPES & WICKING

Envelope Expander, Inside Envelopes

Envelopes

Jet inside and outside envelopes are designed for rimless systems like Michelin and Continental



NUMBER OF ENVELOPES REQUIRED



- Ideally, a shop needs enough envelopes so that an envelope never has to be put on a tire until it has reached room temperature.
- For each chamber in use you would need enough envelopes for tires in the chamber, tires on the mono-rail and tires being prepared for the mono-rail. As the envelope size mix can change daily, this must be considered in the number required. Make sure that wicking pad straps are securely inside of tire.

INSTALLATION

INSIDE/OUTSIDE SEALING SYSTEMS



- Before removing the assembled tire from the envelope table, rotate the valve to the position required for mono-rail and chamber hook-up.
- Once the tire is picked up and placed on the hook, it is recommended that the tire not be rotated. Rotating the tire on the hook with the weight of the tire and envelopes bearing down on the inner envelope could cause cuts and tears.
- Perform regular checks of the tire holding platform and table for burrs and rough edges.

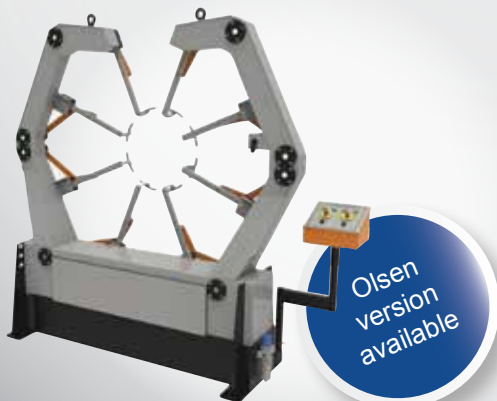
TAKING ENVELOPES OUT OF SERVICE

OUTSIDE ENVELOPES SHOULD BE TAKEN OUT OF SERVICE IF ANY OF THESE NOTED PROBLEMS OCCUR

- Holes or tears are too large to repair.
- Folds are created when drawing vacuum and can't be moved up to a larger tire.
- It has taken tread design patterns in the crown area.
- It has developed small holes over the outside surface that is subjected to the chamber air pressure.
- Has ozone cracks.

Envelope
Spreader
Available

Call for Details
1-800-525-8888



Jet Version
Pictured

ROBBINS AND JET INSIDE/OUTSIDE ENVELOPE SIZES

TIRE SIZE	CASING	JET OUTSIDE	JET INSIDE	ROBBINS OUTSIDE	ROBBINS INSIDE
10.00R15	15	N/A	N/A	3521	10.00x15 HB
7.50R15	15	3206 - 19	N/A	3117	7.50x15 HB
8.25R15	15	3507 - 23	N/A	3218	8.25-15 HB
215/85R16	16	3206 - 21	N/A	3117	29x7-16
225/75R16	16	2906 - 19	N/A	2916	27x5-16
235/85R16	16	3206 - 21	N/A	3117	29x7-16
245/75R16	16	3206 - 21	N/A	3218	29x7-16
7.50R16	16	3206 - 19	N/A	3218	29x7-16
7.50R17	17	3205 - 21	N/A	3218	29x7-17.5
10R17.5	17.5	3507 - 23	N/A	3521	32x8-17.5
11R17.5	17.5	3807 - 22	N/A	3822	35x8-17.5
205/75R17.5	17.5	3206 - 19	2907 - 17.5	N/A	N/A
215/75R17.5	17.5	3206 - 19	2907 - 17.5	3117	27x5-17.5
225/75R17.5	17.5	3206 - 21	N/A	N/A	N/A
235/75R17.5	17.5	3206 - 19	2907 - 17.5	N/A	N/A
245/70R17.5	17.5	3206 - 19	2907 - 17.5	3117	29x7-17.5
245/75R17.5	17.5	3206 - 21	N/A	N/A	N/A
9.5R17.5	17.5	3206 - 21	N/A	3218	32x8-17.5
9R17.5	17.5	3206 - 21	N/A	3218	32x8-17.5
225/70R19.5	19.5	3206 - 21	2907 - 19.5	3218	29x7-19.5
245/70R19.5	19.5	3507 - 23	3208 - 19.5	3218	29x7-19.5
265/70R19.5	19.5	3507 - 23	3208 - 19.5	3521	32x8-19.5
285/70R19.5	19.5	3507 - 23	3208 - 19.5	3822	35x8-19.5
305/70R19.5	19.5	3807 - 22	N/A	3521	35x8-19.5
8R19.5	19.5	3507 - 23	N/A	3218	29x7-19.5
8.25R20	20	3807 - 22	N/A	3822	35x8x20
9.00R20	20	4008 - 22	3808 - 20	4023	38x8-20
10.00R20	20	4008 - 22	3808 - 20	4224	40x8-20
11.00R20	20	4208 - 25	4008 - 20	4224	40x8-20
12.00R20	20	4412 - 20	N/A	4422	42x10-20
13/80R20	20	N/A	N/A	4224	40x8-20
14.00R20	20	N/A	N/A	4522	44x12-20
14/80R20	20	N/A	N/A	4423	42x8-20
365/80R20	20	N/A	N/A	4422	42x10-20
9R22.5	22.5	3807 - 22	3508 - 22.5	3822	35x8-22.5
10.00R22	22	4410 - 28	N/A	4422	40x8-22.5
11.00R22	22	4410 - 28	N/A	4422	42x8-22.5
10R22.5	22.5	4008 - 22	3808 - 22.5	4023	38x8-22.5
11R22.5	22.5	4208 - 25	4008 - 22.5	4224	38x8-22.5
12R22.5	22.5	4410 - 28	4008 - 22.5	4224	40x8-22.5
12.75R22.5	22.5	4410 - 28	4008 - 22.5	4224	40x8-22.5
15R22.5	22.5	4410 - 28	4210 - 22.5	4422	42x10-22.5
16R22.5	22.5	N/A	N/A	4522	44x10-22.5
18R22.5	22.5	N/A	N/A	4522	44x12-22.5
235/80R22.5	22.5	3807 - 22	3508 - 22.5	3822	35x8-22.5
245/75R22.5	22.5	3807 - 22	3508 - 22.5	3822	35x8-22.5
255/70R22.5	22.5	3807 - 22	3508 - 22.5	3822	35x8-22.5
255/80R22.5	22.5	3807 - 22	3508 - 22.5	3822	35x8-22.5
265/75R22.5	22.5	3807 - 22	3508 - 22.5	3822	35x8-22.5
275/70R22.5	22.5	3807 - 22	3508 - 22.5	3822	35x8-22.5
275/80R22.5	22.5	4008 - 22	3808 - 22.5	4023	38x8-22.5
295/60R22.5	22.5	3807 - 22	3508 - 22.5	N/A	N/A
295/75R22.5	22.5	4008 - 22	3808 - 22.5	4023	38x8-22.5
295/80R22.5	22.5	4208 - 25	3808 - 22.5	4224	38x8-22.5
305/70R22.5	22.5	4208 - 25	3808 - 22.5	4023	38x8-22.5
305/75R22.5	22.5	4208 - 25	3808 - 22.5	4023	38x8-22.5
305/85R22.5	22.5	4410 - 28	4008 - 22.5	4224	40x8-22.5
315/80R22.5	22.5	4410 - 28	4008 - 22.5	4422	40x8-22.5
330/85R22.5	22.5	4410 - 31	4210 - 22.5	N/A	N/A
385/55R22.5	22.5	4210 - 27	4008 - 22.5	N/A	N/A
385/65R22.5	22.5	4410 - 28	4210 - 22.5	4422	42x10-22.5
425/65R22.5	22.5	4513 - 33	4210 - 22.5	4522	44x10-22.5
445/50R22.5	22.5	4410 - 31	4008 - 22.5	4219	40x8-22.5
445/65R22.5	22.5	4513 - 33	4210 - 22.5	4522	44x12-22.5
455/55R22.5	22.5	4513 - 33	4210 - 22.5	4422	42x10-22.5
11.00R24	24	4410 - 28	4208 - 24.5	4422	42x10-24.5
12.00R24	24	4410 - 28	4208 - 24.5	4423	44x10-24.5
11R24.5	24.5	4410 - 28	4208 - 24.5	4422	42x8-24.5
12R24.5	24.5	4410 - 28	4208 - 24.5	4422	42x8-24.5
275/80R24.5	24.5	4208 - 25	3808 - 24.5	4224	38x8-24.5
285/75R24.5	24.5	4208 - 25	3808 - 24.5	4224	38x8-24.5
305/75R24.5	24.5	4410 - 28	4008 - 24.5	4223	40x8-24.5
305/75R24.5 Deep Lug	24.5	4410-29	4008-24.5	4422	40x8-24.5

Envelopes



Best
Practices
for
Envelope
Care



Pre-Cure Envelopes

Getting the right size envelope can be challenging. The below chart is a guideline only. Although the 4210-34 is recommended for 11R22.5 many shops prefer the larger 4410-34, or in the case of 11R24.5 the larger 4410-36!

PRE-CURE ENVELOPES

Jet and Robbins manufacture high quality envelopes in a multitude of sizes that are used in the retreading of passenger, industrial, light truck, medium, heavy duty truck, and OTR tires.

Why Jet Envelopes? Lower cost per cure!

- Made with state of the art compression molding technology
- Improved compound for superior heat tear resistance and thermal conductivity
- Reinforced valve area to prevent failure at the valve base area
- Unique bead profile to reduce tear during installation

Flexseal and Arc Band Envelopes with 1.5" Valve

Sealing System Types

TIRE SIZE	BANDAG FLEXSEAL / ARC BAND JET	ROBBINS RIMLESS SYSTEM SEALS ON THE FACE OF BEAD W/VALVE
7.00R15	2906 - 24	2910-25
7.50R15	3206 - 26	3211-27
8.25R15	3507 - 29	3511-30
215/70R15	2906 - 21	2913-22
215/75R15	2906 - 24	2910-25
225/75R15	2906 - 24	2910-25
235/75R15	3206 - 26	3211-27
6.00R16	2906 - 21	2913-22
6.50R16	2906 - 21	2913-22
7.00R16	3206 - 26	3111-24
7.50R16	3206 - 26	3211-27
8.25R16	3507 - 29	3511-30
9.00R16	3507 - 29	3812-32
215/75R16	2906 - 24	2910-25
215/85R16	3206 - 26	3211-27
225/75R16	2906 - 24	2910-25
235/85R16	3206 - 26	3211-27
245/75R16	3206 - 26	3211-27
265/75R16	3206 - 26	3211-27
285/75R16	3507 - 29	3511-30
225/70R16.5	2906 - 24	2910-25
10R16.5	3206 - 26	3211-27
12R16.5	3507 - 29	3511-30
8.00R16.5	2906 - 21	2913-22
8.75R16.5	2906 - 24	2910-25
9.50R16.5	3206 - 26	3211-27
750-17	3206 - 26	3211-27
9R17.5	3206 - 26	3513-28
10R17.5	3507 - 29	3511-30
11R17.5	3807 - 30	3812-32
205/75R17.5	3206 - 23	
215/75R17.5	3206 - 26	3213-25
225/75R17.5	3206 - 26	3211-27
235/75R17.5	3206 - 26	3211-27
245/70R17.5	3206 - 26	3211-27
285/75R17.5	3507 - 29	
8R19.5	3507 - 26	3515-25
9R19.5	3507 - 26	3513-28
225/70R19.5	3206 - 23	3213-25
235/70R19.5	3206 - 23	3213-25
245/65R19.5	3206 - 23	3213-25
245/70R19.5	3507 - 26	3513-28
265/70R19.5	3507 - 26	3513-28
285/70R19.5	3507 - 29	3511-30
305/70R19.5	3807 - 30	3812-32
445/65R19.5	4513 - 43	4513-44
6.50R20	3507 - 26	3515-25

TIRE SIZE	BANDAG FLEXSEAL / ARC BAND JET	ROBBINS RIMLESS SYSTEM SEALS ON THE FACE OF BEAD W/VALVE
7.00R20	3507 - 26	3515-25
7.50R20	3807 - 30	3816-28
8.25R20	3807 - 30	3812-32
9.00R20	4008 - 32	4012-34
10.00R20	4210 - 34	4213-37
11.00R20	4210 - 36	4415-38
12.00R20	4412 - 38	4413-40
10.00R22	4410 - 36	4416-36
11.00R22	4412 - 38	4415-38
12.00R22	4412 - 38	4413-40
8R22.5	3807 - 25	3818-26
9R22.5	3807 - 30	3814-30
10R22.5	4008 - 32	4014-32
11R22.5	4210 - 34	4217-34
12R22.5	4410 - 36	4416-36
12.75R22.5	4410 - 36	4416-36
15R22.5	4412 - 38	4413-40
235/80R22.5	3807 - 30	3816-28
245/75R22.5	3807 - 25	3818-26
255/70R22.5	3807 - 30	3816-28
255/80R22.5	3807 - 30	
265/70R22.5	3807 - 30	3814-29
265/75R22.5	3807 - 30	3814-30
275/70R22.5	4008 - 32	4214-32
275/80R22.5	4210 - 34 *	
295/60R22.5	3807 - 30	
295/75R22.5	4210 - 34 *	4210-34
295/80R22.5	4208 - 34	4215-35
305/70R22.5	4210 - 34 *	4217-34
305/75R22.5	4210 - 34	4217-34
305/85R22.5	4410 - 36	4416-36
315/80R22.5	4410 - 36	4416-36
330/85R22.5	4412 - 38	
365/80R22.5	4513 - 43	58 X 12
385/55R22.5	4210 - 36	
385/65R22.5	4412 - 38	4415-38
385/75R22.5	4513 - 43	58 X 12
425/65R22.5	4513 - 43	4515-41
445/50R22.5	4412 - 38	4415-38
455/50R22.5	4513 - 44	4415-38
455/55R22.5	4513 - 43	4515-41
445/65R22.5	4513 - 44	4814-44
11.00R24	4412 - 38	4415-38
12.00R24	4412 - 38	4515-41
11R24.5	4410 - 34	4418-34
12R24.5	4410 - 36	4416-36
275/80R24.5	4210 - 34	4217-34
285/75R24.5	4210 - 34	4217-34
295/80R24.5	4410 - 34	4418-34
305/75R24.5	4410 - 34	4418-34

* 4210-32 RECOMMENDED FOR LOW TREAD

ENVELOPE VALVES*

Envelope Valves aid to maintain vacuum during the curing cycle in the Autoclaves

- Wide base valves are used for heavy lug patterns to fill in the voids and help to maintain superior seal with the envelope
- Wide base valves are equipped with deep channels for efficient airflow

MFG. NO	DESCRIPTION
EV011	Valve 1.5" Diameter (Jet Standard)
EV02	Wide Base Valve 2.5" diameter
EV013	Goodyear Envelope Valve
EV013BC	Bar Code for Goodyear Envelope Valves

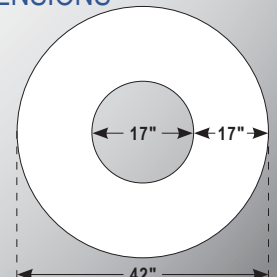
Color coded valves special order

CMT ENVELOPE DIMENSIONS

42=42" outside diameter (O.D.) of the envelope hole

17=17" outside diameter (O.D.) of the envelope hole

34= Double the measurement from the outside diameter of the hole to the outside diameter of the envelope. 2 X 17="34" bead to bead (B to B)



*14 in-lbs recommended torque equals roughly hand tighten then one or two turns with hand wrench

21 ENVELOPES // SPRAYERS, LUBE, REPAIR, ENVELOPES & WICKING

Envelope Tester, Envelope Storage Cart

CURING TUBE

- Designed to be used with collapsible curing rims •
- Popular with intermodal tires

MC GEE NO.	DESCRIPTION
D1491	10 x 20 Curing Tube



B & J ENVELOPE TESTER

- Extremely Fast • Detects the smallest leaks • Positive operation • Easy to install • Simple to use • **No maintenance required!**



ASCOT NO.	MFG NO.	DESCRIPTION
649-83340	833400	B & J Envelope Tester



Jet Envelopes

ENVELOPE STORAGE CART

- Organize and store envelopes conveniently • Mobile, can be moved around the shop wherever needed • Sturdy and easy to maneuver • Color-coded handle grips available to organize envelopes by size • Easy assembly • **CART HEIGHT: 39.75" • BASE DIAMETER: 47.83" • LOAD CAPACITY: 1,000 lb.**

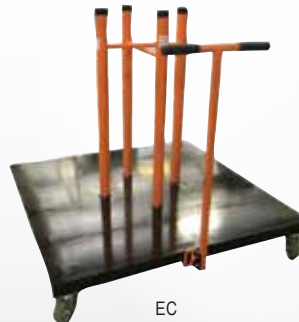


Storage cart in use

840100



ASCOT NO.	MFG NO.	DESCRIPTION
649-40100	840100	B & J Envelope Cart
	EC	Jet Envelope Cart (Four Sections)
	ERC	Jet Expandable Rim Cart
	ESR	Jet Envelope Storage Rack (not pictured)



EC



ERC



ENVELOPE SEALING RINGS*



Gasket



Sealing Ring



Ring & Gasket Sold Separately

"Available Sizes: 14", 15", 16", 16.5", 17", 17.5", 19.5", 20", 22", 22.5", 24" & 24.5"
 DDIL Flex Seal Gasket 17.5", 19.5", 20", 22.5", 24" & 24.5"
 MEG Flex Seal Band - fits most sealing rings. Call for details.

WOVEN ROLL WICKING

- For use with valve type processes • Full rolls only
- Treated with a special release agent to prevent adhesion to the cushion gum



634-05586

ASCOT NO.	MC GEE NO.	DESCRIPTION	SIZE
634-05586	WG112	Woven Roll Wicking - Green	1-1/2" x 180'
634-05587	WG2	Woven Roll Wicking - Green	2" x 180'

RUBBER WICKING PADS

- High elasticity compound eliminating tread deformations • More durable than cloth wick pads and can be used repeatedly • Eliminates use of venting poly underneath • Excellent thermal resistance, reducing aging for extended use



DL01

Fabric reinforced!



DL21

MC GEE NO.	SIZE	DESCRIPTION	QTY./BOX
DL01	55.50" x 6.75"	Inside/Outside Envelope	15
DL21	22" x 6"	Bandag/Goodyear Style	15

STRETCH WICKING PRODUCTS

- For use with valve-type envelopes • All 4-ply



ASCOT NO.	MC GEE NO.	DESCRIPTION	QTY./BOX
634-00812	8X12	8" x 12" Stretch Wicking Pad	24
634-00815	8X15	8" x 15" Stretch Wicking Pad	24
634-00820	8X20	8" x 20" Stretch Wicking Pad	24
645-01812	8X12MICH	MICH8X12 Michelin Wicking Pad	24
645-01815	8X15MICH	MICH8X15 Michelin Wicking Pad	24

Retread Brushes, Flexible Shaft Machines, Wheel Arbor Adapters



RETREAD BRUSHES

- Used for applying and stippling in cement



653-40082

ASCOT NO.	MFG. NO.	DESCRIPTION
653-40082	40082	2" Diameter Stipple Brush
	44063	Hand Wire Scratch Brush, .012 Carbon Steel Fill, Shoe Handle, 4 x 16 Rows. Ideal for Cleaning and Prepping Surfaces

CEMENT BRUSHES & DISPENSERS

- Cement brush that meets every need and a sealable cement dispenser with a built-in brush



BUILT-IN BRUSH



SEALABLE CEMENT DISPENSER



532-06020

ASCOT NO.	MCGEE NO.	DESCRIPTION
532-06020	6020	16 oz. Aluminum Cement Dispenser with Brush Top
532-06021	6021	Vulcanizing Brush 9"

TACK BANDS FOR SMOOTH, FINE TEXTURE



539-80002



539-80003



539-80012



539-80013

ASCOT NO.	MCGEE NO.	DESCRIPTION
539-80002	H1238	Hub for OX2R 2-1/2" OD x 1" W 3/8" arbor hole
539-80003	H1138	Hub for OX3R 2-1/2" OD x 5/8" W 3/8" arbor hole
539-80012	OX2R	2-1/2" OD x 1" W
539-80013	OX3R	1-1/2" OD x 5/8" W

WYCO FLEXIBLE SHAFT MACHINES



- Versatile Wyco Flexible Shaft Machines are offered for the various needs in foundries, steel welding shops, sheet metal fabricators, maintenance departments, forging plants, tire shops • **TYPICAL APPLICATIONS INCLUDE:** Wood or metal finishing, rust or paint removal, auto body sanding, tire buffing, etc. • Many types of accessories are used with these machines, including edge-type grinding wheels, wire brushes, sanding discs, depressed center wheels, tire rasps, sanding drums



ASCOT NO.	MFG. NO.	CORE CASING & HANDPC. NO.	LENGTH (FEET)	CORE NO.	CASING	STRAIGHT HANDPC.
516-00492	49-2	10R	5	C-10	K-10	3500
516-00493	49-3	2R	6	C-2	K-2	3500
516-00494	49-4	2R	6	C-2	K-2	3500
516-00495	49-5	30R	7	C-30	K-30	551
516-00496	49-6	30R	7	C-30	K-30	551
516-04914	49-14	4R	7	C-4	K-4	551

Call for pricing on accessories and parts

WYCO WHEEL ARBOR-ADAPTERS

- For grinding wheels or wire brushes
- 9/16"- 18 female thread to fit Wyco handpieces

ASCOT NO.	MFG. NO.	WHEEL WIDTH	MALE THREAD
FOR GRINDING WHEELS AND OTHER ACCESSORIES			
516-00305	305	5/8"	3/8"-24
516-00405	405	1"	1/2"-20
516-00505	505	1-1/2"	1/2"-20
516-00605	605	1-1/2"	5/8"-18

ASCOT NO.	MFG. NO.	DESCRIPTION
FOR ROTARY RASPS		
516-01305	305R	Threaded 3/8" (16 To Fit Rasps)
516-01405	505R	Threaded 1/2" (13 To Fit Rasps)



516-00405

PRECURE SHOP ACCESSORIES



639-11073



**ASK US ABOUT OUR
STAPLER PROGRAM
FOR FREE GOODS!**

ASCOT NO.	ITEM NO.	DESCRIPTION
639-11081	11081F	Duofast Air Stapler F1B-50-16
639-10800	11073F	Fasco Staple Gun F1B 80-16 USC EB 8008 Staples
639-02338	ESBNK402310	Bostitch 3/8" Staples (10,000 per Box, 20 Boxes per Case)
639-05010	ED5010C08	Duofast 5/16" Staples (5000 per Box, 20 Boxes per Case)
639-08008	EB8008	20ga Chisel Point 5/16" Staples - Fits Fasco, BeA (10,000 per Box, 24 Boxes per Case)
	SPT	Staple Pulling Tape

McGee Staple Program - Call About **FREE GUN** Replacement Program! 1-800-525-8888

PRECURE TREAD STAPLES

• **Black Magic Staples** - Melt during cure cycle • No staple removal required • No staple littered floors to clean • No punctured or worn envelopes • Fewer tire re-runs • No metal injuries • No cut or abrasion marks from removing



STAPLE	APPLICATION	SIZE W X L	GAUGE	STAPLER 60-90 PSI	STAPLES/ BOX	BOX/ CASE
S0573TR	Road Tire Retread Staple- used by pre-cure like Bandag/Goodyear	1/2 x 3/8"	19	OMER81P	5112	20
SH0555TR	HD Retread Staple-for heavy lub tires like off road	1/2 x 9/16"	16	OMER82P	4200	20
SH0537TR	Low temp below 215°-cure process	1/2 x 3/8"	16	OMER82P	5040	20



OMER81P



We stock many brands of
STAPLES AND STAPLERS.
Please call us for details.

Call Today!
1-800-525-8888



TEFLON HOSE ASSEMBLIES FOR PRECURE RETREADING SYSTEMS

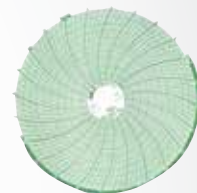
- Teflon hose assemblies in any length are available for all precure tire retreading equipment including Bandag, Harrelson, Vulcan, etc.
- Hoses are used inside the chamber for inflating the tire and evacuating the air from the envelope • Hoses are made of an innercore of extruded Teflon and covered with stainless steel braid reinforcement • All hoses have permanent swage-type brass end fittings 1/4"-18 male pipe (NPT)



Call us for
ordering
information!

CHAMBER CHARTS

- 65472277C010 Bandag 24 hr chart 0-100 PSI • 65472281A225F Bandage 24 hr chart 50-250 Degree
- More charts available



COUPLERS & PLUGS

645-16171



645-01000



645-00117

645-21192



645-00321



812P

645-01604

645-08476

645-00017

ASCOT NO.	MC GEE NO.	DESCRIPTION
645-01000	1000HN	1/4" Bandag-Type Coupler
645-00011	11E	Plug Tire Valve Stem Steel Fits 5/16"- .302 Thread
645-03000	W-3000HT	High Temperature Washer for 1000 Above

HANSEN SPECIAL COUPLER FOR PRESS TYPE MATRIX

645-00321	B3HD21Y	Coupler (Brass)
645-21192	B3K21192	Plug (Brass)

1/4" BANDAG-TYPE COUPLERS/ADAPTERS

645-00017	CST17B	Chamber Exhaust Coupler (Brass)
645-00117	CPST17B	Chamber Envelope Adapter (Brass)
645-02014	2014EPR	Thin Replacement O-ring
645-02110	2110EPR	Wide Replacement O-ring

PARKER SPECIAL COUPLER MRT

645-01604	BH160Y4FP	Coupler Vacuum Seal - Chamber
645-16171	BH161711	MRT Nipple Adapter - Chamber

BAIRD STYLE COUPLERS AND ADAPTERS

645-08476	8746	Straight Thru With 90° Side Exhaust Coupler For Envelope Use
645-00874	874	90° Hose Inlet Coupler For Tube
645-00812	812P	.302 Valve Steam Adapter - Aro Style
645-00814	814	.482 Envelope Adapter

Electric Tire Branders, Propane Tire Brander, Letters & Numbers

Tire Branders & Markings

ELECTRIC TIRE BRANDERS

- **Hardwood handle** • 1" letters (A-Z) & numbers (0-9) sold separately
- Comparable to Myers 32A brander



Model 30

45699

EL16

ASCOT NO.	MFG. NO.	DESCRIPTION
TIRE BRANDER ACCESSORIES		
452-00300	END LOCK	End Lock for Tire Brander Slot
452-00301	BI-END-1/2	1/4" & 1/2" Brander End Lock

MFG. NO.	DESCRIPTION
Model 30	Electric Tire Brander (1/4" & 1/2" Characters). Holds approximately (16) 1/4" characters and (10) 1/2" characters
45699	Electric Tire Brander 1" 32A with Auxiliary Handle 110V (220 Available)
EL16	16E/C Elrick Brander 120 Volt 1/4", 1/2", 3/8" Characters

PAINTSTIK® MARKERS

- **Real paint in stick form** • Ideal for coding tire casings
- Marks are long lasting, water resistant and weather resistant
- Marks will withstand vulcanizing and recap temperatures
- Non-toxic, contains no lead
- Marking range -50°F to 150°F (-46°C to 66°C)
- INCLUDES: 12 sticks per box, 12 boxes per case

Markal



MCGEE NO.	ASCOT NO.	COLOR
MKWHITE	459-80220	White (Markal B)
MKYELLOW	459-80221	Yellow (Markal B)
MKRED	459-80222	Red
MKBLACK	459-80223	Black
MKBLUE	459-80225	Blue
MKGREEN	459-80226	Green
MKPINK	459-80227	Pink
MKPURPLE	459-80228	Purple
MKBROWN	459-80229	Brown
MKGRAY	459-80230	Gray
MKGOLD	459-80231	Gold
MKORANGE	459-80271	Orange



459-85100

PAINTSTIK® MARKER HOLDER

ASCOT NO.	MFG. NO.	COLOR
459-85100	85100	6" Push-Button Metal Holder for B-Paintstik

MARKAL TYRE MARQUE

- **Ideal for temporary marking of tires** • Marks easily on wet or cold surfaces • Lead-free, zinc-free marks can be painted over • SIZE: 1/2" X

ASCOT NO.	MFG. NO.	COLOR
459-54220	51420	White
459-54222	51421	Yellow



459-54222

EASILY MARKS ON WET OR COLD SURFACES

The White Markal Crayon in use.

LETTERS AND NUMBERS FOR TIRE BRANDERS

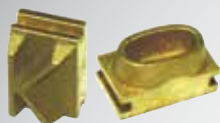


1" Letters and Numbers

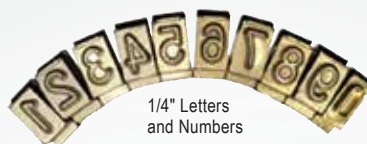
ASCOT NO.	MFG. NO.	DESCRIPTION
1" LETTERS & NUMBERS		
452-00001	TB1NOSET	Tire Brander 1" Number Set
452-00011	TB1LETSET	Tire Brander 1" Letter Set
452-00100	EL10	Tire Brander 1" Insert: 0
452-00101	EL11	Tire Brander 1" Insert: 1
452-00102	EL1	Tire Brander 1" Insert: 2
452-00103	EL13	Tire Brander 1" Insert: 3
452-00104	EL14	Tire Brander 1" Insert: 4
452-00105	EL15	Tire Brander 1" Insert: 5
452-00106	EL16	Tire Brander 1" Insert: 6
452-00107	EL17	Tire Brander 1" Insert: 7
452-00108	EL18	Tire Brander 1" Insert: 8
452-00109	EL19	Tire Brander 1" Insert: 9
452-00201	EL1A	Tire Brander 1" Insert: A
452-00202	EL1B	Tire Brander 1" Insert: B
452-00203	EL1C	Tire Brander 1" Insert: C
452-00204	EL1D	Tire Brander 1" Insert: D
452-00205	EL1E	Tire Brander 1" Insert: E
452-00206	EL1F	Tire Brander 1" Insert: F
452-00207	EL1G	Tire Brander 1" Insert: G
452-00208	EL1H	Tire Brander 1" Insert: H
452-00209	EL1I	Tire Brander 1" Insert: I
452-00210	EL1J	Tire Brander 1" Insert: J
452-00211	EL1K	Tire Brander 1" Insert: K
452-00212	EL1L	Tire Brander 1" Insert: L
452-00213	ELJKM	Tire Brander 1" Insert: M
452-00214	EL1N	Tire Brander 1" Insert: N
452-00215	EL1O	Tire Brander 1" Insert: O
452-00216	EL1P	Tire Brander 1" Insert: P
452-00217	EL1Q	Tire Brander 1" Insert: Q
452-00218	EL1R	Tire Brander 1" Insert: R
452-00219	EL1S	Tire Brander 1" Insert: S
452-00220	EL1T	Tire Brander 1" Insert: T
452-00221	EL1U	Tire Brander 1" Insert: U
452-00222	EL1V	Tire Brander 1" Insert: V
452-00223	EL1W	Tire Brander 1" Insert: W
452-00224	EL1X	Tire Brander 1" Insert: X
452-00225	EL1Y	Tire Brander 1" Insert: Y
452-00226	EL1Z	Tire Brander 1" Insert: Z

Character Sets, Serial Number Remover Tool, Tire Regrooving tools

LETTERS AND NUMBERS FOR TIRE BRANDERS (CONT.)



1/2" Letters
and Numbers



1/4" Letters
and Numbers

ASCOT NO.	MFG. NO.	DESCRIPTION
1/2" LETTERS & NUMBERS		
452-00012	TB12NOSET	Tire Brander 1/2" Number Set
452-00112	TB12LETSET	Tire Brander 1/2" Letter Set
452-02100	EL120	Tire Brander 1/2" Insert: 0
452-02101	EL121	Tire Brander 1/2" Insert: 1
452-02102	EL122	Tire Brander 1/2" Insert: 2
452-02103	EL123	Tire Brander 1/2" Insert: 3
452-02104	EL124	Tire Brander 1/2" Insert: 4
452-02105	EL125	Tire Brander 1/2" Insert: 5
452-02106	EL126	Tire Brander 1/2" Insert: 6
452-02107	EL127	Tire Brander 1/2" Insert: 7
452-02108	EL128	Tire Brander 1/2" Insert: 8
452-02109	EL129	Tire Brander 1/2" Insert: 9
452-00501	EL12A	Tire Brander 1/2" Insert: A
452-00502	EL12B	Tire Brander 1/2" Insert: B
452-00503	EL12C	Tire Brander 1/2" Insert: C
452-00504	EL12D	Tire Brander 1/2" Insert: D
452-00505	EL12E	Tire Brander 1/2" Insert: E
452-00506	EL12F	Tire Brander 1/2" Insert: F
452-00507	EL12G	Tire Brander 1/2" Insert: G
452-00508	EL12H	Tire Brander 1/2" Insert: H
452-00509	EL12I	Tire Brander 1/2" Insert: I
452-00510	EL12J	Tire Brander 1/2" Insert: J
452-00511	EL12K	Tire Brander 1/2" Insert: K
452-00512	EL12L	Tire Brander 1/2" Insert: L
452-00513	EL12M	Tire Brander 1/2" Insert: M
452-00514	EL12N	Tire Brander 1/2" Insert: N
452-00515	EL12O	Tire Brander 1/2" Insert: O
452-00516	EL12P	Tire Brander 1/2" Insert: P
452-00517	EL12Q	Tire Brander 1/2" Insert: Q
452-00518	EL12R	Tire Brander 1/2" Insert: R
452-00519	EL12S	Tire Brander 1/2" Insert: S
452-00520	EL12T	Tire Brander 1/2" Insert: T
452-00521	EL12U	Tire Brander 1/2" Insert: U
452-00522	EL12V	Tire Brander 1/2" Insert: V
452-00523	EL12W	Tire Brander 1/2" Insert: W
452-00524	EL12X	Tire Brander 1/2" Insert: X
452-00525	EL12Y	Tire Brander 1/2" Insert: Y
452-00526	EL12Z	Tire Brander 1/2" Insert: Z

ASCOT NO.	MFG. NO.	DESCRIPTION
1/4" LETTERS & NUMBERS		
452-00014	TB14NOSET	Tire Brander 1/4" Number Set
452-00114	TB14LETSET	Tire Brander 1/4" Letter Set
452-01100	EL140	Tire Brander 1/4" Insert: 0
452-01101	EL141	Tire Brander 1/4" Insert: 1
452-01102	EL144	Tire Brander 1/4" Insert: 2
452-01103	EL143	Tire Brander 1/4" Insert: 3
452-01104	EL144	Tire Brander 1/4" Insert: 4
452-01105	EL145	Tire Brander 1/4" Insert: 5
452-01106	EL146	Tire Brander 1/4" Insert: 6
452-01107	EL147	Tire Brander 1/4" Insert: 7
452-01108	EL148	Tire Brander 1/4" Insert: 8
452-01109	EL149	Tire Brander 1/4" Insert: 9
452-00401	EL14A	Tire Brander 1/4" Insert: A
452-00402	EL14B	Tire Brander 1/4" Insert: B
452-00403	EL14C	Tire Brander 1/4" Insert: C
452-00404	EL14D	Tire Brander 1/4" Insert: D
452-00405	EL14E	Tire Brander 1/4" Insert: E
452-00406	EL14F	Tire Brander 1/4" Insert: F
452-00407	EL14G	Tire Brander 1/4" Insert: G
452-00408	EL14H	Tire Brander 1/4" Insert: H
452-00409	EL14I	Tire Brander 1/4" Insert: I
452-00410	EL14J	Tire Brander 1/4" Insert: J
452-00411	EL14K	Tire Brander 1/4" Insert: K
452-00412	EL14L	Tire Brander 1/4" Insert: L
452-00413	EL14M	Tire Brander 1/4" Insert: M
452-00414	EL14N	Tire Brander 1/4" Insert: N
452-00415	EL14O	Tire Brander 1/4" Insert: O
452-00416	EL14P	Tire Brander 1/4" Insert: P
452-00417	EL14Q	Tire Brander 1/4" Insert: Q
452-00418	EL14R	Tire Brander 1/4" Insert: R
452-00419	EL14S	Tire Brander 1/4" Insert: S
452-00420	EL14T	Tire Brander 1/4" Insert: T
452-00421	EL14U	Tire Brander 1/4" Insert: U
452-00422	EL14V	Tire Brander 1/4" Insert: V
452-00423	EL14W	Tire Brander 1/4" Insert: W
452-00424	EL14X	Tire Brander 1/4" Insert: X
452-00425	EL14Y	Tire Brander 1/4" Insert: Y
452-00426	EL14Z	Tire Brander 1/4" Insert: Z

ASCOT NO.	MFG. NO.	DESCRIPTION	ASCOT NO.	MFG. NO.	DESCRIPTION
CHARACTER SETS					
452-00001	TB1NOSET	1" Tire Brander Number Set	452-00014	TB14NOSET	1/4" Tire Brander Number Set
452-00011	TB1LETSET	1" Tire Brander Letter Set	452-00112	TB12LETSET	1/2" Tire Brander Letter Set
452-00012	TB12NOSET	1/2" Tire Brander Number Set	452-00114	TB14LETSET	1/4" Tire Brander Letter Set

SERIAL NUMBER REMOVER TOOL

531-95001



531-95002

ASCOT NO.	MFG. NO.	DESCRIPTION
531-95001	TTHB-1	Serial Number Remover Tool
531-95002	RRB-1	12-Pack Replacement Blades

TIRE REGROOVING TOOLS & ACCESSORIES



ASCOT NO.	MFG NO.	DESCRIPTION
455-00003	GR3	Rubber Cut 414 Rema Regroover
455-00129	N/A	Set Screw for PS-15 Regroover
455-00401	W1	Regroover Blades 20-Pack
455-00402	W2	Regroover Blades 20-Pack
455-00403	W3	Regroover Blades 20-Pack
455-00404	W4	Regroover Blades 20-Pack
455-00405	W5	Regroover Blades 20-Pack
455-00406	W6	Regroover Blades 10-Pack
455-00444	No. 4 Head	Replacement Head for 125 Groover
455-00444	No. 4 Bld.	Replacement Blades for 125 Groover
455-12500	125250W	Heavy Duty Pistol Grip Tire Groover
455-15017	N/A	Transformer for PS-15 Regroover
455-15019	N/A	Rotative Switch for PS-15 Regroover
455-00411	R1	Round Blade for HD Grover 5/64"
455-00412	R2	Round Blade for HD Grover 1/8"
455-00413	R3	Round Blade for HD Grover 13/64"
455-00414	R4	Round Blade for HD Grover 9/32"
455-00415	R5	Round Blade for HD Grover 23/64"

DOTKIT - Includes 29 numbers from 0-9 designed with extra numbers to use for the proper year of tire retreading in plastic storage bin.



DOTSLUG - Custom DOT brand with 1/4" "R DOT" using your shop code. Longer lasting & eliminates mix-ups when replacing brander letters. Available in 1" and 3/4" as well.



27 TIRE REPAIR // KNIVES, PATCHES, CHEMICALS, BURRS, STONES, EXTRUDERS & CLIPPERS

Tire Repair Knives, Rubber Knife, Skiving Knife



TIRE REPAIR KNIVES



ASCOT NO.	MFG. NO.	DESCRIPTION	BLADE LENGTH	QTY./BOX
531-60570	X751N	High carbon steel, hawk bill notch, glaze finish, round burnt finish handle (riveted)	2" / 51mm	12
531-75190	X2T	High carbon steel, taper point, glaze finish, round burnt finish handle (riveted)	4" / 102mm	12
531-75310	X3N	High carbon steel, round point, thin skiver, glaze finish, round burnt finish handle	4-7/8" / 124mm	12
531-75200	X1S	High carbon steel, square point, glaze finish, round burnt finish handle (riveted)	2-1/2" / 64mm	12
531-75170	X2S		3" / 76mm	12
531-75330	X3S		3-5/8" / 93mm	12
531-75370	X4S		3-7/8" / 99mm	12
531-75440	X5S		4-1/4" / 108mm	12

RUBBER KNIFE & ACCESSORIES

• High carbon steel, square point, glaze finish, round burnt finish handle (riveted)



ASCOT NO.	MFG. NO.	DESCRIPTION	BLADE LENGTH	QTY./BOX
531-60070	X4x1S	High carbon steel, square point, glaze finish, round burnt finish handle (riveted)	4" x 1" / 102 x 26mm	12
531-60090	X5x1S		5" x 1" / 127 x 26mm	
531-60130	X6x1S		6" x 1" / 152 x 26mm	
531-60150	X8x11/8S		8" x 1-1/8" / 203 x 29mm	
531-60170	X10x11/4S		10" x 1-1/4" / 254 x 32mm	



MFG	DESCRIPTION	BLADE LENGTH	QTY/BX
DH71060	Butcher Knife w/Guard	14" x 1-7/8"	1
DM87760	Knife Sharpener		1
ML09750	1mm Green Laser Line Projector for cutting tread straight		1

FLEXIBLE TIRE REPAIR KNIFE & OTHERS

• High carbon steel, round point skiver, glaze finish, round burnt finish handle (riveted)



ASCOT NO.	MCGEE NO.	DESCRIPTION	BLADE LENGTH	QTY./BOX
531-60300	141N	4" x 1" Curved Notch Repair Knife	4"	12
531-60310	161N	6" x 1-1/2" 5-Notch Trim Knife	6"	12
531-75220	75220	3/8" Curved Point Shoe Knife	3-3/8"	12
531-75150	X2RF	High carbon steel, round point skiver, glaze finish, round burnt finish handle (riveted)	4"	12
	K55M	Handle and blade to trim vent excess and mold flow from retread tire in 15 seconds. Guide on the handle positions replaceable blade (K55MB) approximately after 3,000 tires.		
	MK46508	Flash Tri Knife w/Handle & V-tip	9-1/4" x 1/2"	12

SKIVING KNIFE

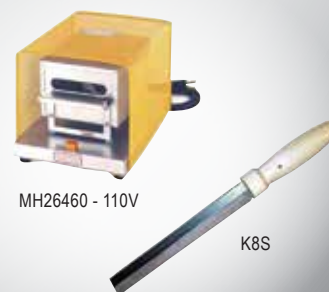
ASCOT NO.	MCGEE NO.	DESCRIPTION
531-70030	S2	4 1/2" Handle for X2 Blades
531-71050	S2K	Replacement Blade Each
	DH72570	Rubber Mill Blade Handle 3/4" Slot
	MK41610	Wood Mill Blade Handle 3/4" Slot
	MK38070	Mill Blade 6-1/2" x 3/4"

*Other sizes available.



HEATER & HEATED KNIVES

• Type KLG electric heaters heat rubber cutting knives, trim blades, burn-in knives, and other tools requiring heat for efficient performance. • To increase safety, heaters are equipped with a pilot light, and a perforated guard to prevent contact with heater surfaces. • The Type KLG heater comes with a thermostat.



ASCOT NO.	MFG. NO.	DESCRIPTION
	K8S	8" Insulated Heater Knife
	K6S	6" Insulated Heater Knife

Bias Repair, Radial Repair, Vulcanizing Cement, Cleaner, Sealer, Patches

BIAS REPAIRS - PASSENGER AND TRUCK

- **JET Bias Repairs are designed with large ply construction for repairing all bias ply tube and tubeless tires** • Repairs can be used for repairing crown, shoulder and sidewall injuries • Install with Jet Fast Dry Vulcanizing Cement or Black Vulcanizing Cement in hot curing systems



Bias Repair Units

Bias Repair Units - Can be used for crown, shoulder or sidewall

REPAIR UNIT	SIZE		QTY/BOX
	INCH	MM	
SB03	4 1/8	105	15
SB04L	5 3/4	120	15
SB05	6 5/8	170	10
SB06	9 5/8	245	10
SB07	11 5/8	295	10
SB08	13 5/8	345	5

SPECIAL PATCHES

- **Soft Cushion series by Jet is dual cure for vulcanizing rubber with heat (HC) or chemical vulcanization!**



ST2S



IR40

PART #	AMOUNT	DESCRIPTION
IR40	50	Blue Triangle Section Patches
ST1S	100	9K Yellow Steer Tire 1-5/8" Patches
ST2S	100	10K Orange Steer Tire 1-5/8" Patches
SID1Y	100	Yellow Triangle ID Patch

Cloth back patches for OTR needs available!

BEAD SEALER

- **JET Bead Sealer provides a seal between the bead area of the tire and rim**, assisting in the prevention of leaks caused by minor surface imperfections



Bead Sealer

MCGEE NO.	DESCRIPTION	SIZE
1770J	Bead Sealer	32 fl. oz.

JET RADIAL REPAIRS - PASSENGER AND LIGHT TRUCK

JET Center-Over-Injury Repairs are designed for use in all radial tires. The JET Radial Repair is intended for use in HOT or COLD applications. JET Radial Repairs are designed for use in the crown area of radial tires. Install with JET Fast Dry Vulcanizing Cement.

REPAIR UNIT	INCH	SIZE		QTY/BOX
		MM		
SR110	2-3/4 X 2	70 X 50		20
SR110H	3-1/4 X2-3/8	80 X 60		20
SR112	4-3/8 X 2-1/2	110 X 65		20
SR114	5-3/4 X 3	145 X 75		10
SR120	5 X 3	125 X 75		10
SR122	6-7/8 X 2-3/8	175 X 80		10
SR124	8-1/4 X 3-3/8	210 X 85		10
SR126	10-1/4 X 3	260 X 75		10
SR133	5 X 4	125 X 100		10
SR135	6 X 5	150 X 125		10
SR140	8 X 4	200 X 100		10
SR142	10 X 5	250 X 125		4

Additional sizes - SR133, SR140, SR142, SR135



SR120



SR Series Patch

- **Universal repairs - nail hole injuries in crown area only** • Techno cushion gum for max adhesions

Bias or Radial — Universal Repair Units - Square



AS - Square

Bias or Radial — Universal Repair Units - Round



AR - Round

REPAIR UNIT	INCH	MM	QTY/BOX
SSA45	1-3/4 sq	45 sq	100
SSA45T	1-3/4 sq	45 sq	100
SSA55	2-1/8 sq	55 sq	80
SSA55T	2-1/8 sq	55 sq	120

REPAIR UNIT	INCH	MM	QTY/BOX
SRA45	1-3/4	45	30
SRA45T	1-3/4	45	100
SRA55	2-1/8	55	30
SRA55T	2-1/8	55	120

FAST DRY VULCANIZING CEMENT

- **JET Fast Dry Vulcanizing Cement is formulated to provide outstanding performance** when used with JET Repair Materials.

MCGEE NO.	DESCRIPTION	SIZE
1645J	Fast Dry Vulcanizing Cement (Flammable)	8 fl. oz.
1646J	Fast Dry Vulcanizing Cement (Flammable)	32 fl. oz.
1747J	Sealer Innerliner Black (Flammable)	16 fl. oz.



1747J



PRE-BUFF CLEANER

- **JET Pre-Buff Cleaner** is formulated to remove contaminants and silicone from the innerliner of the tire prior to buffing

MCGEE NO.	DESCRIPTION	SIZE
1723J	Cleaner (Flammable)	32 fl. oz.
1722J	Pre-Buff Cleaner (Aerosol)	16 fl. oz.



29 TIRE REPAIR // KNIVES, PATCHES, CHEMICALS, BURRS, STONES, EXTRUDERS & CLIPPERS

Prema HC Repair Units, Cements & Liner Sealer

Prema HC line is designed to be utilized in vulcanizing systems (>200F). Why Prema Heat Cure?

- **Superior Quality vs. Competitive Brands** - Prema HC overlaps the poly backing on the repair unit so you can remove it easier without touching the cushion gum. Most all competitive brands are perforated or scored which sometimes can damage the repair unit and make it unavoidable to touch the back of the patch. Prema HC also has a higher number of plies compared to competitors
- **Shelf Life** - Prema and Prema HC Repair Units have a 2 year shelf life thanks to advances we have made in our German laboratories
- **Size Range** - On our Prema HC Line we offer a wide range of Radial Repairs from 3 1/4" x 2 1/4" up to 13 1/4" x 5 1/2", on our Bias repairs we offer from 4" x 4" up to 6 1/2" x 6 1/2", and we also offer a Universal (Bias/Radial) Repair that is Round and 2 3/4" diameter



RADIAL REPAIRS

MFG NO.	DESC.	L (IN.)	W (IN.)	L (MM)	W (MM)	# PLIES	QTY/BOX
PR-110-HC	Heat Cure Radial Repair Unit	3 1/4	2 1/4	83	57	1	20
PR-115-HC	Heat Cure Radial Repair Unit	3 1/4	3	95	76	1	10
PR-120-HC	Heat Cure Radial Repair Unit	5	3 1/4	127	83	2	10
PR-122-HC	Heat Cure Radial Repair Unit	7	3 1/4	178	83	2	10
PR-124-HC	Heat Cure Radial Repair Unit	8 3/4	3 1/4	222	83	2	10
PR-125-HC	Heat Cure Radial Repair Unit	5 1/4	4 3/4	133	121	2	10
PR-126-HC	Heat Cure Radial Repair Unit	10 3/4	3 1/4	273	83	3	10
PR-135-HC	Heat Cure Radial Repair Unit	7 1/2	5 1/2	191	140	4	10
PR-140-HC	Heat Cure Radial Repair Unit	7 3/4	4 3/4	197	108	3	10
PR-142-HC	Heat Cure Radial Repair Unit	10 3/4	5 1/2	273	140	4	10
PR-144-HC	Heat Cure Radial Repair Unit	13 1/4	5 1/2	337	140	4	10



BIAS REPAIRS

MFG NO.	DESC.	L (IN.)	W (IN.)	L (MM)	W (MM)	# PLIES	QTY/BOX
PB-3-HC	Heat Cure Bias Repair Unit	3 3/4	3 3/4	96	96	2	10
PB-4-HC	Heat Cure Bias Repair Unit	4 3/4	4 3/4	121	121	2	10
PB-5-HC	Heat Cure Bias Repair Unit	4 3/4	4 3/4	121	121	4	10
PB-6-HC	Heat Cure Bias Repair Unit	6 1/2	6 1/2	165	165	4	10
PB-7-HC	Heat Cure Bias Repair Unit	9 3/4	9 3/4	248	248	6	5
PB-8-HC	Heat Cure Bias Repair Unit	11 3/4	11 3/4	298	298	6	5



UNIVERSAL BIAS/RADIAL REPAIRS

MFG NO.	DESCRIPTION	DIAMETER (IN.)	DIAMETER (MM)	QTY/UNIT
UHC-2.5	Universal Rd. 1	2 3/4	70	50

CEMENTS & CHEMICALS

MFG NO.	DESCRIPTION	SIZE U.S. GAL.	SIZE LITERS
PBCB-5G	PREMABOND CEMENT Brush	5 U.S. gal.	18.93 liters
PBCS-5G	PREMABOND CEMENT Spray	5 U.S. gal.	18.93 liters
PSRS-5G	PREMASOL Rubber Solvent (Flammable)	5 U.S. gal.	18.93 liters
PBAC-5G	PREMABOND Aquas Cement	5 U.S. gal.	18.93 liters



PREMA RADIAL REPAIRS - PASSENGER AND LIGHT TRUCK

• **PREMA Center-Over-Injury Repairs** are designed for use in all radial tires • The PREMA Radial Repair is intended for use in HOT or COLD applications • PREMA Radial Repairs are designed for use in the crown, sidewall and shoulder of radial tires • Install with PREMA Ultra Fast Dry Vulcanizing Cement • Refer to the PREMA Repair Chart for proper selection of the repair unit • Always fill the injury channel with the appropriate Prema repair material



ASCOT NO.	MCGEE NO.	DESCRIPTION	L (IN.)	W (IN.)	# PLIES	QTY/BOX
575-05109	PR109	Radial 109	3	1 3/4	1	20
575-05110	PR110	Radial 110	3 1/4	2 1/4	1	20
575-05111	PR110B	Radial 110	3 1/4	2 1/4	1	80
575-05112	PR112	Radial 112	4 3/4	3	1	10
575-15112	PR112B	Radial 112	4 3/4	3	1	40
575-05113	PR113	Radial 112HD	5	3 1/4	1	10
575-05114	PR114	Radial 114	5 1/4	3 1/2	1	10
575-05120	PR120	Radial 120	5	3 1/4	2	10
575-05135	PR135	Radial 135	7 1/2	5 1/2	4	10
575-05140	PR140	Radial 140	7 3/4	4 1/4	3	10

PREMA UNIVERSAL REPAIRS

• **PREMA Universal Repairs** are designed for **NAILHOLE REPAIRING** of tubeless tires in the **Crown area only** • Universal Repairs are available in round or square versions • Install with PREMA Ultra Fast Dry Vulcanizing Cement • Always fill the injury channel with the appropriate Prema repair material



PUR2

ASCOT NO.	MCGEE NO.	DESCRIPTION	L (IN.)	W (IN.)	QTY/BOX
550-00502	PUR2	Universal Round 2	2 1/4	--	50
550-00522	PUS2	Universal Square 2	1 3/4	1 3/4	100
550-00533	PUS3	Universal Square 3	2 1/2	2 1/2	100
550-00534	PUS4	Universal Square 4	3	3	50

ULTRA FAST DRY VULCANIZING CEMENT

• **PREMA Ultra Fast Dry Vulcanizing Cement** is formulated to provide outstanding performance when used in conjunction with PREMA Repair Materials • Contains no ozone depleting chemicals



ASCOT NO.	MCGEE NO.	DESCRIPTION	SIZE
501-00508	PFC8	Ultra Fast Dry Vulcanizing Cement (Flammable)	8 fl. oz.
501-00532	PFC32	Ultra Fast Dry Vulcanizing Cement (Flammable)	32 fl. oz.

BIAS REPAIRS - PASSENGER AND TRUCK

• **Designed with large ply construction for repairing all bias-ply tube and tubeless tires** • These repairs can be used for repairing crown, shoulder and sidewall injuries • Install with PREMA Ultra Fast Dry Vulcanizing Cement



DESIGNED WITH LARGE PLY

ASCOT NO.	MCGEE NO.	L (IN.)	W (IN.)	# PLIES	QTY/UNIT
562-00501	PB1	2-1/4"	-	1	25
562-00502	PB2	3-1/4"	-	2	10
562-00503	PB3	3-3/4"	3-3/4"	2	10
562-00504	PB4	4-3/4"	4-3/4"	2	10
562-00505	PB5	4-3/4"	4-3/4"	4	10
562-00506	PB6	6-1/2"	6-1/2"	4	10
562-00507	PB7	9-3/4"	9-3/4"	6	5
562-00508	PB8	11-3/4"	11-3/4"	6	5
562-00509	PB9	13-3/4"	13-3/4"	6	5
562-00511*	PB11*	17-3/4"	17-3/4"	8	2

BIAS REPAIRS - AGRICULTURAL

• **Designed for use in all types of farm implement bias tires** • These repair units can be used for repairing crown, shoulder and sidewall injuries • Install with PREMA Ultra Fast Dry Vulcanizing Cement



ASCOT NO.	MCGEE NO.	L (IN.)	W (IN.)	# PLIES	QTY/UNIT
568-00500	PBT0	7-3/4"	7-3/4"	4	5
568-00501	PBT1	8-3/4"	8-3/4"	4	5
568-00502	PBT2	10-3/4"	10-3/4"	4	5
568-00503	PBT3	14-1/4"	14-1/4"	4	5
568-00504	PBT4	8-3/4"	8-3/4"	6	5
568-00505	PBT5	10-3/4"	10-3/4"	6	5
568-00506	PBT6	14-1/4"	14-1/4"	6	2
568-00507	PBT7	20-1/2"	20-1/2"	6	2

PRE-BUFF CLEANER

• **PREMA Pre-Buff Cleaner** is formulated to remove contaminants and silicone from the innerliner of the tire prior to buffing • Contains no ozone depleting chemicals



ASCOT NO.	MCGEE NO.	DESCRIPTION	SIZE
505-00532	PPC32	Pre-Buff Cleaner (Flammable)	32 fl oz
505-00516	PPC16	Pre-Buff Cleaner (Aerosol)	11.1 oz

Special Cement, Repair Sealant, A & B Compound Repair



SPECIAL CEMENT BL™

• The key to REMA TIP TOP's exclusive Blue Bonding System, Special Cement BL creates a nearly indestructible bond between tire and repair unit • Specifically designed for the application of REMA TIP TOP Radial, Bias-Ply and Universal, Minicombi & RemaStem repair units • Use for chemical installation of REMA TIP TOP blue bonding layer repair units, Blue Floater Gum and chemical vulcanizing compounds • REMA TIP TOP's newest Special Blue Cement (flammable) is free of CFC and aromatic compounds



502-40541

502-51388

CREATES
ULTRA
STRONG
BOND

ASCOT NO.	MCGEE NO.	DESCRIPTION	CASE/QTY
502-40541	BL8F	Special Blue Cement (flammable), 8 Oz. Brush Top Can	10
502-51388	BL32F	Special Blue Cement (flammable), 32 Oz. Can	10

RIM/BEAD SEALER AND INNERLINER REPAIR SEALANT

• REMA TIP TOP offers two distinct Bead Sealer formulations designed to prevent leaks between the tire and rim • Designed to be applied to tire beads during the mounting process • Ideally suited for use with new or old tires • No drip formula is highly viscous with an extended shelf life • CFC-free formula requires shorter drying times • Properly applied, Repair Sealer creates an airtight seal around a finished repair, over buffed areas or porous tire innerliners • Prudent use of Repair Sealer maintains the integrity of the repair.vulcanizing uncured rubber • Flammable Version Available: F Series



505-00176

504-09600

PREVENT
LEAKS
BETWEEN
TIRE & RIM

ASCOT NO.	MCGEE NO.	DESCRIPTION	CASE/QTY
504-09600	960F	Rim & Bead Sealer w/Brush Cap. CFC-Free Formula (Flammable) 32 Oz.	10
505-00176	76F	Innerliner Sealer Can (Flammable) - 16 Oz.	10

A&B COMPOUND REPAIR SYSTEM (FLAMMABLE)

• REMA TIP TOP's Vulcanizing Compound has no equal when it comes to cold vulcanization injury filling • Equal quantities of A compound and B compound, thoroughly mixed, produce a durable permanent repair

DURABLE
PERMANENT
REPAIR

MIX EQUAL
QUANTITIES
OF A & B



501-50300



501-51300

ASCOT NO.	MCGEE NO.	DESCRIPTION
501-50300	50F	A+B Vulf Compound Kit: 650g can of A compound; 650g can of B compound; 1 can Special Cement BL (CFC Free), 225g
501-51300	51F	A+B Vulf Compound Kit: 300g can of A compound; 300g can of B compound; 1 can Special Cement BL (CFC Free), 40g each

OTR-F CEMENT (FLAMMABLE)

• Specifically designed for the chemical application of REMA TIP TOP Radial (RAD) and Bias Ply (PN) repair units • Optimizes the service performance of long haul earthmover and agricultural tires



ASCOT NO.	MCGEE NO.	DESCRIPTION
500-00096	OTRF	OTR-F Cement (flammable)

500-00096



Use all tire repair chemicals in a well ventilated area. Avoid prolonged breathing or inhalation of vapors.

Cements, Sealants & Patches

REMA OTR BASKET BIAS REPAIR UNITS

- The OTR-B-UC unit is engineered and constructed to create maximum flexibility
- The ply strips are positioned in a basket weave pattern creating the strength and flexibility needed for reinforcement or section repair
- Shelf Life for Uncured & Heat Cure Repair Units: 1 Year from Date of Manufacture; Clothback Repair Units: 4 Years from Date of Manufacture

MAXIMUM FLEXIBILITY

BASKET WEAVE PATTERN



526-11118



526-11136

ASCOT NO.	MFG. NO.	DESCRIPTION	SIZE (IN.)	SIZE (MM)	# PLIES	BOX/ QTY
OTR Basket Bias Repair Units - UNCURED						
526-11115	10 104 BU	OTR-B - UC 04	7.5 x 7.5	190 x 190	10	4
526-11116	10 106 BU	OTR-B - UC 06	9.75 x 9.75	245 x 245	10	6
526-11117	10 108 BU	OTR-B - UC 08	12.25 x 12.25	310 x 310	10	6
526-11118	10 110 BU	OTR-B - UC 010	14.25 x 14.25	360 x 360	5	8
526-11119	10 112 BU	OTR-B - UC 012	16.25 x 16.25	410 x 410	5	8
526-11120	10 114 BU	OTR-B - UC 014	18.25 x 18.25	465 x 465	5	10
526-11121	10 116 BU	OTR-B - UC 016	20.25 x 20.25	515 x 515	2	10
526-11122	10 118 BU	OTR-B - UC 018	22.75 x 22.75	575 x 575	1	12
526-11123	10 120 BU	OTR-B - UC 020	26.75 x 26.75	680 x 680	1	14
OTR Basket Bias Repair Units - HEAT CURE						
526-11124	12 104 BH	OTR-B - HC 04	7.5 x 7.5	190 x 190	10	4
526-11125	12 106 BH	OTR-B - HC 06	9.75 x 9.75	245 x 245	10	6
526-11126	12 108 BH	OTR-B - HC 08	12.25 x 12.25	310 x 310	10	6
526-11127	12 110 BH	OTR-B - HC 010	14.25 x 14.25	360 x 360	5	8
526-11128	12 112 BH	OTR-B - HC 012	16.25 x 16.25	410 x 410	5	8
526-11129	12 114 BH	OTR-B - HC 014	18.25 x 18.25	465 x 465	5	10
526-11130	12 116 BH	OTR-B - HC 016	20.25 x 20.25	515 x 515	2	10
526-11131	12 118 BH	OTR-B - HC 018	22.75 x 22.75	575 x 575	1	12
526-11132	12 120 BH	OTR-B - HC 020	26.75 x 26.75	680 x 680	1	14
OTR Basket Bias Repair Units - Clothback						
526-11133	12 104 BC	OTR-B - CB 04	7.5 x 7.5	190 x 190	10	4
526-11134	12 106 BC	OTR-B - CB 06	9.75 x 9.75	245 x 245	10	6
526-11135	12 108 BC	OTR-B - CB 08	12.25 x 12.25	310 x 310	10	6
526-11136	12 110 BC	OTR-B - CB 010	14.25 x 14.25	360 x 360	5	8
526-11137	12 112 BC	OTR-B - CB 012	16.25 x 16.25	410 x 410	5	8
526-11138	12 114 BC	OTR-B - CB 014	18.25 x 18.25	465 x 465	5	10
526-11139	12 116 BC	OTR-B - CB 016	20.25 x 20.25	515 x 515	2	10
526-11140	12 118 BC	OTR-B - CB 018	22.75 x 22.75	575 x 575	1	12
526-11141	12 120 BC	OTR-B - CB 020	26.75 x 26.75	680 x 680	1	14

COLD VULCANIZING FLUID

- Designed for the vulcanization of tube patches, valve patches and rubber-based tube valve repair units



501-00203



501-00204

ASCOT NO.	MC GEE NO.	DESCRIPTION	BOX/ QTY
501-00203	203F	Cold Vulcanizing Fluid, Flammable, 8 Oz. Can w/ Brush	10
501-00204	204F	Cold Vulcanizing Fluid, Flammable, 32 Oz. Can	10

PRE-BUFF CLEANER

- Specially formulated to dissolve mold-release lubricants and other contaminants creating a clean surface prior to innerliner buffing
- Available in spout-top liquid or spray-top aerosol dispensers
- CFC-free formula requires shorter drying times
- Same formula for tube or tire preparation



505-00171

CEMENT BRUSHES & DISPENSERS

- Cement brush that meets every need and a sealable cement dispenser with a built-in brush

SEALABLE CEMENT DISPENSER

BUILT-IN BRUSH



532-06020

ASCOT NO.	MC GEE NO.	DESCRIPTION	BOX/ QTY
505-00170	70F	Pre-Buff Cleaner (Flammable) - 11.1 oz	12
505-00171	71F	Pre-Buff Cleaner (Flammable) - 1 Qt. Spout Top Can	10
532-06020	6020	16 Oz. Aluminum Cement Dispenser with Brush Top	1
532-06021	6021	Replacement Brush Lid for 6020 Cement Dispenser	—



71F



70F



REMA GTR RADIAL REPAIR UNITS

- These repair units are designed for use in section repairs in **RADIAL OTR TIRES**
- They are intended for use in heat cure systems (Autoclaves, Section Molds, Molds or Strap Type Curing Systems) • Their "center over injury" design makes them a very convenient and easy type of repair
- Used with uncured black floater gum, they provide added adhesion in all types of repairs
- Shelf Life for Uncured & Heat Cure Repair Units: 1 Year from Date of Manufacture; Clothback Repair Units: 4 Years from Date of Manufacture

FOR RADIAL
OTR TIRES

"CENTER
OVER
INJURY"
DESIGN



526-10052



526-12046

ASCOT NO.	MFG. NO.	DESCRIPTION	SIZE (IN.)	SIZE (MM)	# PLIES	QTY./ BOX
GTR RADIAL REPAIR UNITS - UNCURED						
526-10046	10 046 RU	GTR - UC 46	16 x 5	405 x 125	4	5
526-10050	10 050 RU	GTR - UC 50	22 x 7.5	560 x 190	5	5
526-10052	10 052 RU	GTR - UC 52	22 x 9.5	560 x 240	6	2
526-10056	10 056 RU	GTR - UC 56	28 x 10.5	710 x 265	7	2
526-10060	10 060 RU	GTR - UC 60	38 x 10.5	965 x 265	8	2
GTR RADIAL REPAIR UNITS - HEAT CURE						
526-12046	12 046 RH	GTR - HC 46	16 x 5	405 x 125	4	5
526-12050	12 050 RH	GTR - HC 50	22 x 7.5	560 x 190	5	5
526-12052	12 052 RH	GTR - HC 52	22 x 9.5	560 x 240	6	2
526-12056	12 056 RH	GTR - HC 56	28 x 10.5	710 x 265	7	2
526-12060	12 060 RH	GTR - HC 60	38 x 10.5	965 x 265	8	2
GTR RADIAL REPAIR UNITS - CLOTHBACK						
526-12146	12 046 RC	GTR - CB 46	16 x 5	405 x 125	4	5
526-12150	12 050 RC	GTR - CB 50	22 x 7.5	560 x 190	5	5
526-12152	12 052 RC	GTR - CB 52	22 x 9.5	560 x 240	6	2
526-12156	12 056 RC	GTR - CB 56	28 x 10.5	710 x 265	7	2
526-12160	12 060 RC	GTR - CB 60	38 x 10.5	965 x 265	8	2

REMA GTR BASKET RADIAL REPAIR UNITS

- These repairs are designed to give the needed flexibility and extra support for shoulder and sidewall injuries of **RADIAL OTR TIRES** • They provide the ability to repair larger injuries than standard radial "center over the injury" repair units • Shelf Life for Uncured & Heat Cure Repair Units: 1 Year from Date of Manufacture; Clothback Repair Units: 4 Years from Date of Manufacture

FOR RADIAL
OTR TIRES

"CENTER
OVER
INJURY"
DESIGN



525-10138



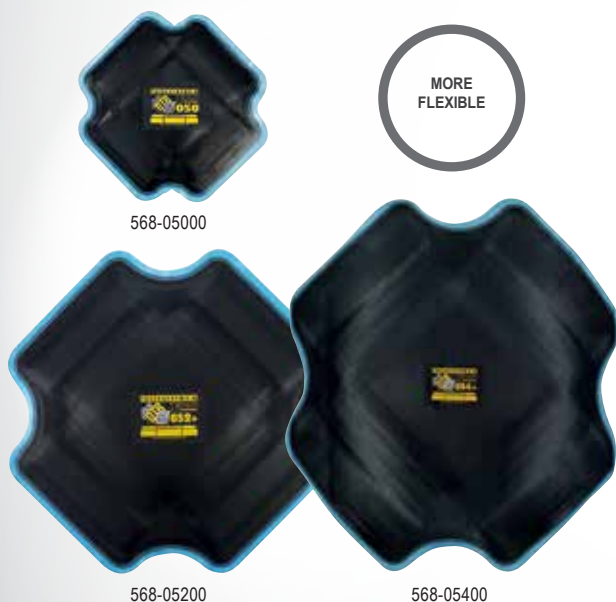
525-11348

ASCOT NO.	MFG. NO.	DESCRIPTION	SIZE (IN.)	SIZE (MM)	# PLIES	QTY./ BOX
GTR BASKET RADIAL REPAIR UNITS - UNCURED						
525-10136	10 016 BRU	GTR-B - UC 016	16 x 5	405 x 125	5	6
525-10137	10 020 BRU	GTR-B - UC 020	20 x 9	510 x 230	5	6
525-10138	10 027 BRU	GTR-B - UC 027	27 x 10	685 x 255	2	7
525-10139	10 038 BRU	GTR-B - UC 038	38 x 10	965 x 255	2	7
GTR BASKET RADIAL REPAIR UNITS - HEAT CURE						
525-11345	12 016 BRH	GTR-B - HC 016	16 x 5	405 x 125	5	6
525-11346	12 080 BRH	GTR-B - HC 020	20 x 9	510 x 230	5	6
525-11347	12 027 BRH	GTR-B - HC 027	27 x 10	685 x 255	2	7
525-11348	12 038 BRH	GTR-B - HC 038	38 x 10	965 x 255	2	7
GTR BASKET RADIAL REPAIR UNITS - CLOTHBACK						
525-11349	12 016 BRC	GTR-B - CB 016	16 x 5	405 x 125	5	6
525-11350	12 020 BRC	GTR-B - CB 020	20 x 9	510 x 230	5	6
525-11351	12 027 BRC	GTR-B - CB 027	27 x 10	685 x 255	2	7
525-11352	12 038 BRC	GTR-B - CB 038	38 x 10	965 x 255	2	7

Cements, Sealants & Patches

AGRICULTURAL AND OTR TIRES/ PN SERIES BIAS-PLY REPAIR UNITS

• 90° cord angle of the plies provides greater compatibility with the flexing action of the tire as it operates under load, plus it also makes the patch more flexible for easier installation • A new concept in rubber compounding of the ply-end cover strip eliminates cord breakout at the end of the plies • Two different ply levels for each size patch provide better compatibility of the repair unit to the ply rating of the tire • Flexibility in patch/injury size optimization for improved performance • Eliminates need for "S" (Sidewall) patches in the smaller sizes • Reduced buffing requirement due to the smaller size of the patch • Use Blue Bonding cement



ASCOT NO.	MFG. NO.	SIZE (IN.)	SIZE (MM)	# PLIES	QTY./ BOX
568-05000	PN-50	9-1/2"	240mm	4	3
568-05010	PN-050+	9-1/2"	240mm	6	3
568-05200	PN-052	14"	360mm	6	3
568-05210	PN-052+	14"	360mm	8	3
568-05400	PN-054	19"	480mm	8	2
568-05410	PN-054+	19"	480mm	10	2
568-05600	PN-056	26"	660mm	10	2
568-05610	PN-056+	26"	660mm	12	2
567-05620	PN-056S	26"	660mm	10	2
568-05800	PN-058	32"	810mm	12	1
568-05810	PN-058+	32"	810mm	14	1
567-05820	PN-058S	32"	810mm	12	1
567-05821	PN-058S+	32"	810mm	14	1

REMA TIP TOP BIAS-PLY TIRE REPAIR UNITS



• REMA TIP TOP offers a wide selection of bias-ply (cross-ply) repair units for applications on passenger, truck, OTR, agricultural and industrial bias-ply tires • Due to our fully-integrated blue bonding layer, REMA TIP TOP bias-ply repair units are suitable for use with all current vulcanizing systems • For best results, always select the corresponding REMA TIP TOP Stem insert unit, carbide cutter and Special Cement BL (non flammable) or Special Blue Cement (flammable) for a permanent, reliable repair



ASCOT NO.	MCGEE NO.	SIZE (IN.)	SIZE (MM)	# PLIES	QTY./ BOX
562-26006	PN0	1-9/16	39.7	1	50
562-26037	PN3	4	101.6	2	10
562-26044	PN4	5-3/4	146	2	10
562-26051	PN5	6-1/2	165	4	10
562-26068	PN6	9-1/4	235	6	10
562-26075	PN7	11-3/4	298.5	6	10
562-26082	PN8	13-1/2	343	6	5
562-26099	PN9	15-1/2	393	8	3
562-26109	PN10	17-3/4	450.8	8	3
563-00200	PN20	10	254	4	10
563-00210	PN21	14-1/2	368.3	4	5
563-00220	PN22	20	508	4	3
563-00230	PN23	10	254	6	10
563-00240	PN24	14-1/2	368.3	6	5
563-00250	PN25	20	508	6	3
563-00400	PN40	7	177.8	4	2
563-00410	PN41	8-3/4	222.3	6	2
563-00420	PN42	10-1/4	260.3	8	2
562-26212	FRU1MP	2-1/2	63	1	25
562-26213	FRU1P	2-1/2	63	1	100
562-26314	FRU2MP	3-1/4	82.55	2	25
562-26315	FRU2P	3-1/4	82.55	2	100

Universal Patches, Radial Repair Units



UNIVERSAL PATCH

• **REMA TIP TOP's rubber-reinforced, universal repair units are specially formulated to provide maximum flexibility and strength** • These non-directional, center over injury repair units perform flawlessly in both radial or bias-ply tire designs • For best results, always select the corresponding REMA TIP TOP Stem insert unit, carbide cutter and Special Cement BL (non flammable) or Special Blue Cement (flammable) product for a permanent, reliable repair



550-26707



550-26714



550-26745



550-26752

ASCOT NO.	MC GEE NO.	SIZE	QTY.
550-26707	UP3	1-1/16"	100
550-26714	UP4.5P	1-3/4"	300 in Pail
550-26721	UP6	1-11/16"	50
550-26738	UP6P	1-11/16"	200 in Pail
550-26745	UP8	2-3/16"	50
550-26752	UP8P	2-3/16"	150 in Pail

RAD-100 SERIES RADIAL REPAIR UNIT

• **REMA TIP TOP offers a variety of radial-ply repair units to meet the diverse demands of today's passenger, truck, and OTR tire applications** • Due to our fully-integrated blue bonding layer and center over injury design, REMA TIP TOP Radial-Ply repair units are suitable for use with all current vulcanizing systems • For best results, always select the corresponding REMA TIP TOP Stem insert unit, carbide cutter and Special Cement BL (non flammable) or Special Blue Cement (flammable) product for a permanent, reliable repair

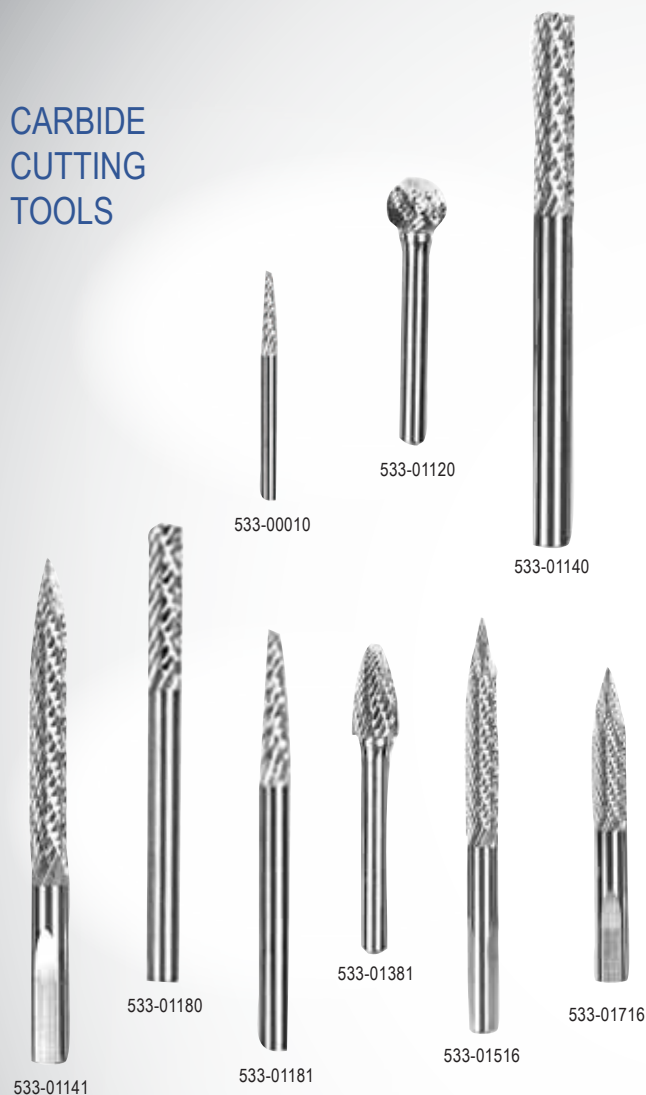


575-00110

ASCOT NO.	MC GEE NO.	DESCRIPTION	PLIES	SIZE (IN.)	QTY./ UNIT
575-00110	RAD110	Radial repair unit	1	2 x 2-3/4	20
575-00115	RAD115	Radial repair unit	1	3-1/2 x 3	20
575-00116	RAD116	Radial repair unit	1	2-5/8 x 4	10
576-00120	RAD120	Radial repair unit	2	4-7/8 x 3	10
576-00122	RAD122	Radial repair unit	2	6-7/8 x 3	10
576-00124	RAD124	Radial repair unit	2	8-1/2 x 3	10
576-00125	RAD125	Radial repair unit	3	4-1/2 x 4-7/8	10
576-00128	RAD128	Radial repair unit	3	2-7/8 x 13-1/8	10
576-00135	RAD135	Radial repair unit	4	5-7/8 x 8	10
576-00140	RAD140	Radial repair unit	3	7-7/8 x 3-15/16	10
576-00142	RAD142	Radial repair unit	4	10-1/4 x 5	10
576-00144	RAD144	Radial repair unit	4	13 x 5	10
577-00146	RAD146	Radial repair unit	4	7-1/4 x 17-1/4	5
577-00150	RAD150	Radial repair unit	5	23 x 7-1/8	5
577-00152	RAD152	Radial repair unit	5	23 x 9-1/2	3
577-00155	RAD155	Radial repair unit	5	10-1/4 x 13-1/8	5
577-00156	RAD156	Radial repair unit	7	29 x 10-1/2	3
577-00160	RAD160	Radial repair unit	7	40 x 10-1/4	3
577-00162	RAD162	Radial repair unit	7	13 x 41-1/4	1
577-00165	RAD165	Radial repair unit	6	13-1/8 x 16-3/4	3
577-00168	RAD168	Radial repair unit	7	14 x 30-3/8	1
577-00175	RAD175	Radial repair unit	8	18 x 21-3/4	3
577-00180	RAD180	Radial repair unit	2	7-3/4 x 6	5
577-00182	RAD182	Radial repair unit	3	10 x 7-1/2	5
577-00184	RAD184	Radial repair unit	3	11-1/2 x 8-1/2	5
577-00185	RAD185+	Radial repair unit	8	28-3/4 x 20-7/8	1
577-00186	RAD186	Radial repair unit	2	13-1/2 x 9-3/4	5
577-00188	RAD188	Radial repair unit	2	18 x 11-1/4	5
577-00190	RAD190	Radial repair unit	2	22 x 15-3/8	3

Tire Repair Tools & Accessories

CARBIDE CUTTING TOOLS



ASCOT NO.	MCGEE NO.	DESCRIPTION	RECOMMENDED ADAPTERS
533-00003	CC3	1/8" (3mm) Pointed End	2523JD
533-00010	CC10	3/8"(10mm) Pointed End	S1043
533-01120	BU12B	1/2" Ball Burr	2523JD
533-01140	BU14R	1/4" Router Burr	2523JD
533-01141	BU14TR	1/4" Long Taper Burr	2523JD
533-01180	BU18R	1/8" Router Burr	S1043
533-01181	BU18T	1/8" Taper Burr (CC45)	S1043
533-01182	BU18TL	1/8" Taper Burr, 3" Overall Length	S1043
533-01381	BU38T	3/8" Tree Burr	2523JD
533-01516	BU516NR	5/16" Long Taper Burr	SLP9216
533-01716	BU716N	7/16" Long Taper Burr	SLP9216
533-01732	BU732N	7/32" Long Taper Burr	2523JD

BUFFING STONES FOR STEELBELTED TIRES



ASCOT NO.	MCGEE NO.	DESCRIPTION
534-80001	A1	Large Cone - 3/4" Stone Diameter
534-80005	A5	Small Cone - 3/4" Stone Diameter
534-80011	A1B	Large Cone 3/4" Stone Diameter (Brown)
534-80015	A15W	Pencil Point - 1/4" Stone Diameter
534-80024	A24	Round Head Pencil - 1/4" Stone Diameter
534-80036	A36	Stone Disc - 1-3/4" Diameter
534-80037	A37	Stone Disc - 1-1/4" Stone Diameter
534-80115	A15S	Pencil Point - 1/4" Stone Diameter-Brown
534-80136	A36S	Stone Disc - 1-3/4" Diameter -Brown
534-80137	A37S	Stone Disc - 1-1/4" Diameter-Brown

37 TIRE REPAIR // KNIVES, PATCHES, CHEMICALS, BURRS, STONES, EXTRUDERS & CLIPPERS

Extruder Repair Parts, Awls, Tire Denailer, Scraper

AWLS



ASCOT NO.	MC GEE NO.	DESCRIPTION
537-95893	261RT	Reamer



ASCOT NO.	MC GEE NO.	DESCRIPTION
537-00001	1013P	Black Handle Awl

TIM-TIRE INJURY MEASURING TOOL



• **Color-coded injury measuring tool** made of the highest quality materials and designed to make tire repair jobs easier and faster

TIRE DENAILER



537-00353

SCRAPER



ASCOT NO.	MC GEE NO.	BLADE LENGTH
537-00004	933	Black Handle Inner Liner Scraper

TREAD DEPTH GAUGES



595TM



5127



N1420H

ASCOT NO.	MC GEE NO.	DESCRIPTION
454-00599	595TM	Tire Tread Depth Gauge. Used to measure tire tread depth in 1/32" increments
454-00712	NS712	Metal Case 595TM - Aluminum Stem
454-01599	5124	Red-Yellow-Green Tread Depth Gauge with plastic slide
454-05127	5127	Red-Yellow-Green Tread Depth Gauge with metal slide
454-01420	N1420H	Truck Tire Depth Gauge Metal. Calibrated in mm and 1/32nd of Inch. Measures Shoulder Wear & Tread Depth

EXTRUDERS

• **Extruder guns are designed to fill a wide range of injuries quickly and easily without trapping air** • Perfect for section repair build-up and for filling skives
• Compact, lightweight, user-friendly, and uses Rope Rubber or Strip Stock



NHE

Jet
Extruder
Manual



Scan Above



Extruder
Repair Parts



MD0110



260685

PART NUMBER	DESCRIPTION	DRIVER	VOLTAGE/ WATT	RUBBER THROUGHPUT LBS/HR
260685	EXTRUDER GUN 550W BOSCH DRIVE	Bosch	220/550	39.6
260685S	EXTRUDER GUN 750W S.A. DRIVE	Salvadori	220V/750	39.6
6790	STANDARD MINI EXTRUDER 110V LGE PORT	Bosch	110/550	39.6
MD0110	MD0110 - EXTRUDER GUN 110V - Jet	CP	110/	
NHE	EXTRUDER NAILHOLE GUN 110V 16022/67100	Salvadori	230V/400	

Cutting Pliers, Stitchers, Carbide Cutting Tools, Buffing Stones, Buffing Wheel



CUTTING PLIER - BOX JOINT

- Perfectly mated cutters, scientifically heat treated to hold their edge
- Precision made of fine polished, high carbon steel • Distinctive CHANNELLOCK BLUE comfort grips



ASCOT NO.	MCGEE NO.	LENGTH	WEIGHT	JAW LENGTH	JOINT THICKNESS	JOINT WIDTH	CUTTER LENGTH
319-00337	CHA337	7" 175mm	7.84 Oz. 222 Gr.	1" 25.5mm	31/64" 12.5mm	15/16" 24mm	1" 25.5mm

CURVED DIAGONAL CUTTING PLIER - LAP JOINT

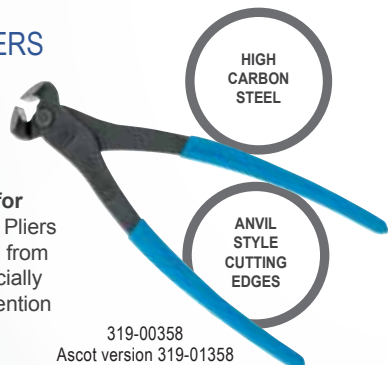
- Curved diagonal for maximum pulling leverage • Perfectly mated cutter, heat treated to hold its edge
- Polished high carbon drop forged steel
- CHANNELLOCK BLUE comfort grips



ASCOT NO.	MCGEE NO.	LENGTH	WEIGHT	JAW LENGTH	JOINT THICKNESS	JOINT WIDTH	CUTTER LENGTH
319-00447	CHA447	7-3/4" 195mm	10.67 Oz. 302 Gr.	1-1/32" 26mm	1/2" 12.5mm	1-1/16" 27mm	1-1/32" 26mm

8" END CUTTING PLIERS

- Offer precision machined knife and anvil style cutting edges to ensure perfect mating and are laser heat treated for superior cutting edge life • Pliers are Made in USA and forged from high carbon steel that is specially coated for ultimate rust prevention



ASCOT NO.	MCGEENO.	LENGTH	WEIGHT	JAW LENGTH	JOINT THICKNESS	JOINT WIDTH	CUTTER LENGTH
319-00358	CHA358	8" 203.2mm	.79 Lb. 358.34 Gr.	.35" 8.89mm	.49" 12.45mm	1.63" 41.4mm	1.18" 29.97mm

319-01023 AS102L3 10" CURVED JAW LOCKING VISE GRIP

- Curved jaw puts tremendous pressure on four points of any style nut or bolt head; includes convenient wire cutter • Ideal for tightening, clamping, twisting and turning • Turn screw to adjust pressure; stays adjusted for repetitive use • Constructed of high-grade heat treated alloy steel for maximum toughness and durability • Guarded release trigger quickly unlocks and protects from accidental release • Hardened teeth are designed to grip from any angle • Jaw capacity: 1-7/8" • Made in Taiwan



STITCHERS

- Corrugated ball bearing stitcher with hardened steel wheel and varnished wooden handle



ASCOT NO.	MCGEE NO.	DESCRIPTION
536-00001	30	1-1/2" x 1/16" Corrugated Stitcher
	CD2	2" x 1/32" Economy Ball-Bearing Stitcher
	CD3	2" x 1/8" Economy Ball-Bearing Stitcher
536-02040	FR5	2" x 2" Flat Roller
536-02890	MRO2890	2" x 1/16" Corrugated Stitcher
536-02910	CD4	2" x 1/4" Corrugated Stitcher
536-06500	MRO6500	2" x 2" Porcupine Roller

GOOSENECK STITCHERS

- The newly designed GOOSENECK STITCHER has been proven to enhance stitching performance, providing ample pressure at all points on the tire without causing muscle fatigue for the tire technician • The easy maneuverability of the Gooseneck Stitcher into the sidewall ensures proper surface preparation and installation of patches

EASY & EFFECTIVE



536-30400



536-60054

ASCOT NO.	MFG. NO.	DESCRIPTION
536-30400	30GN	Gooseneck stitcher, 1-1/2" x 1/8"
536-60054	6005GN	Gooseneck stitcher, 2" x 1/4"

Monaflex Systems Individual Components

Extremely portable, providing the option of distortion free section repairs in a repair facility or in the most remote job site • Combination of flexible rubber heat pads and air bags provides the desired heat and pressure to vulcanize both rubber filler material in the damaged area and to the entire repair unit.

MONAFLEX CONTROL PANEL

Monaflex OTR Control panels feature digital temperature controls, digital timers, inside and outside amp meters, air regulators and safety shut offs with an audible error alert.

ITEM NO.	DESCRIPTION
MONM100	CONTROL PANEL, CAL9500 digital controls, 3 independent air lines, audible alarm
MONTRRSD*	TRRS DIGITAL DISPLAY CONTROL PANEL
MONMVS9000/615*	X PAD ADAPTER
MONMVS9000/616*	X PANEL ADAPTER

*Item not shown

Vulcaflex
options
available



MONAFLEX X-TYPE HEAT PADS

Cutting edge element wire design and layout • Improved heat pad moulding • Heavy duty steel conduit and cable protection moulded into the heat pad provides total cable protection

ITEM NO.	DESCRIPTION
MONMX2519H	X TYPE HEAT PAD, Bias, 25" x 19" heated surface area
MONTRX2621H	X TYPE HEAT PAD, Outside, 26" x 21" heated surface area
MONMX2626H	X TYPE HEAT PAD, Bias or outside, 26" x 26" heated surface area
MONMX3132H	X TYPE HEAT PAD, Bias, 31" x 32" heated surface area
MONMX3015H	X TYPE HEAT PAD, Radial, 30" x 15" heated surface area
MONMX4220H	X TYPE HEAT PAD, Radial, 42" x 20" heated surface area
MONMX4224H	X TYPE HEAT PAD, Radial, 42" x 24" heated surface area
MONMX4824H	X TYPE HEAT PAD, Radial, 48" x 24" heated surface area
MONMX3026H	X TYPE HEAT PAD, Radial or Bias, 30" x 26" heated surface area
MONMX4215H	X TYPE HEAT PAD, Radial, 42" x 15" heated surface area
MONTRX2213H	X TYPE HEAT PAD, Radial or Bias, 22" x 13" heated surface area
MONMX1616H	X TYPE HEAT PAD, Radial or Bias, 16" x 16" heated surface area



MONAFLEX CYLINDER AIR WINDOW BAG

Monaflex cylinder air bags inflate to fill out the inner cavity of the tire, providing even pressure without distortion. Cylinder Window bags are produced with a special blue elastic material that allows the bag to expand into the sidewall area of low profile and wide base tires. The bags covers are made of heat resistant nylon for strength and durability.

ITEM NO.	DESCRIPTION
MONTR1315/20W	CYLINDER AIR BAG, 13" - 15" diameter, 20" barrel length
MONM1721/24W	CYLINDER AIR BAG, 17" - 21" diameter, 24" barrel length
MONM2732/32W	CYLINDER AIR BAG, 27" - 32" diameter, 32" barrel length
MONM3842/32W	CYLINDER AIR BAG, 38" - 42" diameter, 32" barrel length
MONM1721/24B	CYLINDER AIR BAG, 17" - 21" diameter, 24" barrel length
MONM2427/32	CYLINDER AIR BAG, 24" - 27" diameter, 32" barrel length
MONM2732/32WOC*	WINDOW OUTER COVER, 27" - 32" diameter, 32" barrel length

*Item not shown



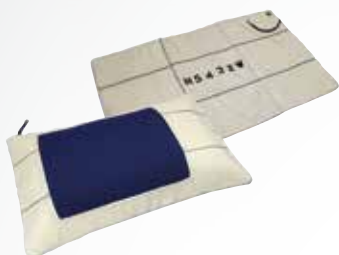
Monaflex Systems Individual Components

Vulcaflex
options
available



MONAFLEX AIR BAG SYSTEMS

Monaflex flat air bags are placed inside the tire with a cylinder air bag for certain tire sizes. This minimizes the number of cylinder air bags required to cover the full range of OTR tires.



ITEM NO.	DESCRIPTION
MONM4824W	AIR BAG COMPLETE WITH WINDOW, 48" x 24"
MONM5432W	AIR BAG COMPLETE WITH WINDOW, 54" x 32"
MONM6732W	AIR BAG COMPLETE WITH WINDOW, 67" x 32"
MONM7532W+	AIR BAG COMPLETE WITH WINDOW, 75" x 32"

+ Denotes special order item.

MONAFLEX EXTERNAL CURING PACK & HARNESS STRAPS

Monaflex external curing packs are produced with durable heat resistant nylon covers. The outer cover sleeve slots hold the harness straps in position and simplify equipment set up. The external curing pack provides even pressure on the outside of the tire for excellent filler rubber adhesion.

Straps sold separately.



ITEM NO.	EXTERNAL CURING PACK DESCRIPTION
MONTR2621E	26" x 21", 5 strap cover sleeve
MONM4832E	48" x 32", 6 strap cover sleeve
MONTR0CXL	Strap & buckle (5 required), used with TR2621E
MONM45/6/71HG	Harness strap set with guide, used with M4832E

Monaflex Complete OTR Vulcanizing Systems

MONAFLEX OTRS SIDEWALL SYSTEM

The **Monaflex OTRS sidewall system** is ideal for bias and radial spot repairs and section repairs in OTR, AG, Skidder and Flotation tire sizes from 14.00-24 to 29.5-29. This system can be completely set up on the tire in less than 3 minutes. Includes the MONMX202 control panel.



ITEM NO.	DESCRIPTION
MONOSH2215	OUTSIDE HEAT PAD
MONOSH2815	INSIDE HEAT PAD
MONOS2117	OUTSIDE AIR BAG
MONOS2517	INSIDE AIR BAG
MONOTRS	COMPLETE OTR SIDEWALL SYSTEM

Monaflex Systems for Truck Tires

MONTRDD & TRRS SYSTEMS

The **TRDD and TRRS systems** vulcanize repairs in radial and bias truck tire range 8.25 to 12.00-24, including low profile and super single, and 9.5-32 to 12.4-38 tractor. The less expensive TRRS covers the same radial repair sizes but is limited to 7" x 7" bias repairs. The TRDD can be extended up to 23.5 OTR tires.



MONTRM SYSTEM

The **TRM Machine** vulcanizes radial and bias tire repairs ranging from 8.25 to 12.00, 365/80 to 445/50 super singles, 13.00 to 17.5 OTR, and 9.5-32 to 16.9-28 tractor tires. This system utilizes a steel housing and fixed outside air bag for quick and easy set up.

TRM Replacement Parts

ITEM NO.	DESCRIPTION
MONTR911/13W*	CYLINDER AIR BAG
MONTR1315/15W*	CYLINDER AIR BAG for Super Singles
MONTR2210H*	HEAT PAD
MONTR2213H*	HEAT PAD
MONM2519H*	HEAT PAD

Tire Repair Tools & Accessories

XLIGHT TIRE SERVICE LED WORK LIGHT

- **ADVANCED DESIGN:** Designed for hands-free lighting during tire service and other work applications • **EASE OF USE:** 14" adjustable spring-tube for optimum light positioning within tight spaces • **COMPACT & POWERFUL:** 2-stage compact high-power LED light provides 125 & 250 lumen output • Multiple high-power magnets on the handle and light-head attract easily to most metal surfaces • Clamp-on handle quickly and easily "grips" over the bead of a tire • Unique design provides unlimited vehicle service and work applications • Lithium-ion rechargeable battery • Redesigned handle allows for 25% larger clamping diameter compared with original XLIGHT 14-921 • Compatible with all passenger, light truck and commercial truck tires • Compatible with all tire spreaders



312-14923

COMPACT
& HIGH
POWER

HANDS-
FREE
LIGHTING



The clamp-on handle quickly and easily grips over the bead of a tire.

ASCOT NO.	MFG. NO.	DESCRIPTION
312-14923	14-923	XLIGHT Tire Service LED Work Light

LED RECHARGEABLE PEN LIGHT

- **Aluminum pen light** with laser and UV light • Top UV light, wavelength: 365NM • Side 5W COB FLOODLIGHT: 450 lumen • Tail light: 3W SPOTLIGHT white LED lumen + red laser light • Power source: rechargeable Li-ion battery • Includes: 50cm USB-C cable • Charging time: 3 hours • Run time: COB 2.5 h, white spotlight: 2.5 hours • 120° rotating metal clip with strong magnet • Dimming switch with battery indication



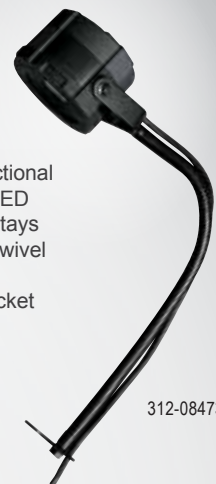
AS51H

LED WORK LAMP ASSEMBLY

- **LED worklamp for tire spreaders** • Directional spotlight for increased visibility • 8W COB LED will provide 650 Lumens, 750 Lux at 1M • Stays cool to the touch • Heavy duty LED lens • Swivel head • Stays cool to the touch • Adjustable, flexible gooseneck • Includes mounting bracket

FLEXIBLE
GOOSENECK

SWIVEL
HEAD



312-08473

ASCOT NO.	MFG. NO.	DESCRIPTION
312-08473	TR8473	LED Work Lamp Assembly

- **Hands free on/off of main light** • ABS silicone band (lightweight) • COB high, low, and flashing with 3W Led High/low spot • USBC charging 3-4 hrs with working time 3-8hrs • Waterproof and shockproof



CPH001

TIRE SERVICE LED WORK LIGHT & REPLACEMENT LAMP HEAD

- **LED:** 1-piece 3W high power LED
- **THREE CONVENIENT SWITCH MODES SO THAT YOU CAN OPERATE AT THE POWER YOU NEED:** High - Low - Off
- **WORKING TIME:** Approx. 3 hours
- **CHARGING TIME:** Approx. 3 hours
- **BRIGHTNESS:** Approx. 200LM for High Mode; 80LM for Low Mode
- Magnet on lamp body and head
- Charging indicator on lamp head
- Detachable lamp head with quick-clip mounting to body
- Smart-clamp design for 9mm-32mm distance
- **MULTI-USE:** Clamping, magnetic, hand-held
- **BATTERY:** Customized 3.7V 900mAh rechargeable polymer battery
- **INCLUDED:** 5V 0.6A (UL) adapter + USB cable

EXTENDED

CLAMPING,
MAGNETIC &
HAND-HELD

HIGH
POWER
LED

312-04146

A high-power LED for a flooding, powerful beam of light when & where you need it!



312-04147

ASCOT NO.	MFG. NO.	DESCRIPTION
312-04146	TWL3035	Tire Service LED Light w/USB Adapter
312-04147	TWL3035H	Replacement Lamp Head for Tire Service LED Light

Tire Spreaders & Repair Stations

MTP, Inc.

HEAVY DUTY TUBELESS TRUCK TUBE/TIRE DUNKERS

- **Space saving design requires 40% less space** • New design fits in left or right corners • Entire rim and tire are checked for air leaks simultaneously
- **ONE MAN OPERATION:** Safe and easy to operate, no lifting • **360° TURN IN WATER:** Easy and fast inspection
- Uni-quick ratchet type adapter adjusts from 15" dia. to 52" dia. and instantly lifts up to 400 lb. RVs to super singles
- Optional inner tube adapter allows you to check tubes up to 50" in diameter



* Valves, Casters, & Spiders Sold Separately

ASCOT NO. MFG. NO. DESCRIPTION

	DD112	Ball Valve Drain Kit for All Dunkers with Poly Tub
	TS-110D	Spider Assembly for EZ-Dunk 110TD
	39ED-4C	Spider Assembly for 39ED 3/4" Center Hole
	39ED-C	Caster Kit for 39ED Only 1 Swivel with 2 Rigid Casters
	55T-C	Caster Kit For New Style 55T only 2 Swivel, 2 Rigid Casters



* Valves, Casters, & Spiders Sold Separately

ASCOT NO. MFG. NO. DESCRIPTION

517-00100	100TTD	E-Z Dunk Truck Tire Dunker, Range 15" - 50" Diameter
517-00039	39ED	39" Dia. x 24" Depth Passenger & RV Tube & Tire Dunker with Polyethylene Tank
517-00055	55T	T & G 55" Dia. x 24" Depth Truck & Grader Tube Dunker with Polyethylene Tank

EZ-110D TRUCK TIRE DUNKER W/LIFT

- One man operation • Picks up tire in and out of water • Adapter for 8 - 10 hole wheels • 55" x 24" Poly tub • Optional Inner tube/tire spider available • Submerges entire tire under water • Can rotate under water for easy marking



517-11033

ASCOT NO. MFG. NO. DESCRIPTION

517-11033	EZ-110D	EZ-110D Truck Tire Dunker w/Lift
-----------	---------	----------------------------------

Branick

ALL PURPOSE "EF" FULL CIRCLE TIRE SPREADER

- **Expose tire defects immediately!** • Bead diameter minimum 13.5", maximum 25.5"
- Cross Sections minimum 5", maximum 21.5" • Revolve the tire 360° for inspection, repair and buffing or installing tubes, flaps and air bags inside curing rims
- Maximum operating pressure of 150 PSI • Air-operated lift raises tire to inspection position

QUICKLY
EXPOSES
TIRE
DEFECTS

REVOLVES
THE TIRE
360°



602-60210

ASCOT NO. MFG. NO. DESCRIPTION

602-60210	EF	All Purpose Full Circle Tire Spreader
-----------	----	---------------------------------------

Tire Spreaders & Repair Stations



HEAVY DUTY "EF/HD" FULL CIRCLE TIRE SPREADER

- Designed to lift and spread truck, bus, tractor and some aircraft tires 14" thru 24", 20-ply, including steel radial tires • Revolves 360°, while spread, for easy excellent inspection • Conveniently located floor-mount controls • Diameter arms easily slide into position to hold inner beads before spreading

HEAVY
DUTY

REVOLVES
THE TIRE
360°



602-60211

ASCOT NO.	MFG. NO.	DESCRIPTION
602-60211	eF-HD	Heavy Duty Full Circle Tire Spreader



TIRE SPREADER FOR RETREADERS & COMMERCIAL FACILITIES

- Versatile machine with twice the lift height of the previous model • This model has a smaller dimensional footprint • Will handle tires 20% wider than the previous model • 33% greater Lifting Capacity • Handles tires sizes from Passenger, Truck, Tractor & small OTR • New tilt function for operator comfort

SMALL
FOOTPRINT

NEW
TILT
FUNCTION



603-03000

ASCOT NO.	MFG. NO.	DESCRIPTION
603-03000	RHS-300	Tire Spreader for Retreaders & Commercial Facilities



PASSENGER/LIGHT TRUCK TIRE SPREADER

- Handles passenger and light truck tires up to 20"
- Controlled tension release to avoid snap-back on tough sidewalls • Easily rotate the tire to locate the repair point
- Quick and easy spread of tire and reduced footprint



604-05045

ASCOT NO.	MFG. NO.	DESCRIPTION
604-05045	5045	Passenger/Light Truck Tire Spreader

INVERTING TIRE SPREADER/REPAIR STATION

- Spreads and inverts passenger, truck and bus tires with ease for inspection and repair
- Foot control valve conveniently located at base of machine
- Adjustable lamp swings in and out of tire



604-05120

ASCOT NO.	MFG. NO.	DESCRIPTION
604-05120	5120	Inverting Tire Spreader/Repair Station



PASSENGER, LIGHT TRUCK AND COMMERCIAL TRUCK TIRE SPREADER

- Handles everything from passenger to super-single truck tires • Adjustable height and a tire ramp • Lifts 35" off the ground • Manual rotation with a tool tray that swivels left and right • Controls for the lift are on both sides of the unit



604-05500

ASCOT NO.	MFG. NO.	DESCRIPTION
604-05500	5500	Passenger, Light Truck and Commercial Tire Spreader

Retread Accessories (cont.)

Branick

NAILHOLE TESTER/SPREADER

- **Electric variable speed rotation** • Quick change probe heads
- Hand and foot operated bi-directional rotation • Auto-stop flaw detection • Visible spark at flaw location • Four air tool ports and two 110V outlets • Accurate flaw detection • Uses standard 110V power • Hand-operated spread and lift • Adjustable work height • Includes medium truck probe



606-57000

ASCOT NO.	MFG. NO.	DESCRIPTION	APPLICATION
PARTS FOR NAILHOLE TESTER/SPREADER			
606-10269	01-0269	Probe, Medium Truck - BTT	For use on 22.5"/24.5" truck tires
606-10270	01-0270	Probe, X-1 Truck - BTT	For use on X-1 truck tires
606-10271	01-0271	Probe, Wide Base Truck - BTT	For use on wide base truck tires
606-10272	01-0272	Probe, 315 Truck - BTT	For use on 315 truck tires
606-10273	01-0273	Probe, Light Truck - BTT	For use on 16" to 19.5" truck tires
606-40040	40-0040	Key Chain Set (Bag of 35)	Chain set for Chain Bar
606-42015	42-0015	Wire, 13" Sensor (Metal Insert)	Sidewall Wire H42-005 Hawkinson
606-42016	42-0016	Wire, 19" Sensor (Nylon Insert)	Sidewall Wire
606-42017	42-0017	Wire, 16" Sensor (Nylon Insert)	Sidewall Wire
606-42018	42-0018	Wire, 26.5" Sensor (Metal Insert)	Sidewall Wire H42-009 Hawkinson
606-42019	42-0019	Wire, 19" Sensor (Metal Insert)	Sidewall Wire
606-10192	01-0192	Probe, Medium Truck - NDT	For use on 22.5"/24.5" truck tires
606-10253	01-0253	Probe, X-1 Truck - NDT	For use on X-1 truck tires
606-10193	01-0193	Probe, Wide Base Truck - NDT	For use on wide base truck tires
606-10252	01-0252	Probe, 315 Truck - NDT	For use on 315 truck tires
606-10191	01-0191	Probe, Light Truck - NDT	For use on 16" to 19.5" truck tires

ASCOT NO.	MFG. NO.	DESCRIPTION
606-57000	BTT-5700-S	Nailhole Tester/Spreader - Steel/Fabric
606-57001	BTT-5700-SF	Nailhole Tester/Spreader - Steel/Fabric

PORTABLE SPRAYING EQUIPMENT

- **PORTABLE SPRAYER INCLUDES:** Pump, 25' x 1/4" airless hose, gun swivel, silver spray gun and tip of choice
- **Recommended Graco tip #163-415**



651-32437

HEAVY
DUTYINCLUDES
GUN TIP OF
CHOICEScan for parts
breakdown

ASCOT NO.	MFG. NO.	DESCRIPTION
651-32437	232437	23:1 Cement Sprayer
651-35462	235462	Silver Airless Spray Gun Only
651-63415	163415	Silver Tip, .015" Orifice, 8-10" Fan Width



Just Easy Tools: #94100 Easy Stacker



THE EASY STACKER IS A TOOL FOR FAST AND SAFE

- Stacking, moving and loading of tires • Specially designed for the tire business • Intended to be mounted on forklifts or loaders • Very effective for loading and unloading - one person operation • Improves safety and makes it much easier to fill a trailer completely with tires • Can provide substantial time savings across a whole range of handling operations • Can tilt and handle tires - horizontal and vertical • Can even improve the whole stock and handling system • No hard manual stacking, no pallets needed • Uses a firm grip, careful grip that does not break the bead • Can make an effective stock system without shelves and pallets • Quick shift facility to change to and from forks within a minute



REMOTE CONTROL OPERATION



FORK MODULE

TECHNICAL SPECIFICATIONS

- Lifting capacity: 1,653.47 lb (750 kg) • Gripping diameter on tires: 19.7" - 47.2" (500-1,200 mm) • Grip length: 82.7" (2,100 mm) • Adjustable gripping force max.: 2,204.6 lb (1,000 kg) • Supply voltage 12V (possibly 24V) • Hydraulics supply 100 bar, preferably 3/8" Hose • Lifting height depends on forklift/loader • Horizontal/Vertical, 0-90 degrees • Quick switching on forklift/loader • Net weight: 1388.9 lb (630 kg). operations

QUICK SHIFT MODULE TO CHANGE TO AND FROM FORKS WITHIN A MINUTE



TILTS TIRES HORIZONTALLY AND VERTICALLY



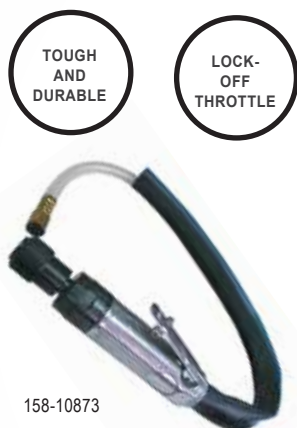
ASCOT COMPOSITE LOW SPEED TIRE BUFFER W/ QUICK CHANGE SLIP CHUCK

- **Needle bearings provide performance and durability in tough working conditions** • Includes exhaust hose • Quick change slip clutch for fast and easy change of buffering wheel • Lock off throttle to prevent accidental start ups • Built-in regulator
- Rear exhaust directs air away from work area
- Ideal for patchwork, roughing areas for recapping and cleaning tire moldings • Composite body



RPG LOW SPEED TIRE BUFFER WITH QUICK CHANGE SLIP CHUCK

- **Brass bushings provide performance and durability in tough working conditions**
- Includes whip hose and exhaust hose • Quick change slip chuck for fast and easy change of buffing wheel • Built-in regulator • Lock off throttle to prevent accidental start ups • Rear exhaust directs air away from the work area
- Ideal for patchwork, roughing areas for recapping and cleaning tire moldings • Overhose Kit also available separately (175-00873)



RPG HIGH SPEED TIRE BUFFER WITH OVERHOSE KIT

• **Jacobs chuck for holding buffing accessories** • Lock-off throttle • **FREE SPEED: 22,000 RPM** • **APPLICATIONS:** Tire patchwork, roughing areas for recapping and cleaning tire moldings • Includes overhose kit

TIRE BUFFER SPECIFICATIONS

ASCOT NO.	MFG. NO.	DESCRIPTION	FREE SPEED (RPM)	LENGTH
158-10873	A873K	Low Speed Tire Buffer with Quick Change Chuck	2,800	1.75"
158-10871	A871K	High Speed Tire Buffer with Overhose Kit	22,000	2.5"
158-11873	A873CK	Ascot Composite Low Speed Tire Buffer w/ Quick Change Slip Chuck		

REPLACEMENT PARTS & ACCESSORIES



ASCOT NO.	MFG. NO.	DESCRIPTION
-----------	----------	-------------

REPLACEMENT PARTS FOR AIR BUFERS

175-00873	17500873	Overhose Kit for Tire Buffers
175-18713	A8713-TA	Trigger Assembly for Tire Buffers
175-28713	SQC01	Replacement 7/16" Quick Change Slip Chuck

ACCESSORIES FOR AIR BUFFERS

173-00018	2512JD	Quick Chuck Adapter w/Collar
173-00019	QC19	Quick Chuck Adapter w/ Spacer, 1" x 3/8" Thread
173-00020	2522	Quick Chuck Adapter for 1/8" Shank
173-00022	2523JD	Quick Chuck Adapter for 1/4" Shank
173-00023	SLP9216	Quick Chuck Adapter for 5/16" Shank

OVERHOSE KIT & CHUCKS



ASCOT NO.	MC GEE NO.	DESCRIPTION
173-09165	2500	Quick Change Chuck
173-09201	2510	1 ¹¹ / ₁₆ " x 3 ³ / ₈ "-24 Chuck Adap. w/Washer & Nut
173-09202	2511JD	2 ³ / ₄ " x 3 ³ / ₈ "-24 Chuck Adap. w/ Nut & Wheel Spacer
173-09211	2512JD	1 ⁷ / ₈ " x 3 ³ / ₈ "-24 Threaded Adap. w/ Washer & Nut - Quick Change
173-09212	SLP9212	2 ¹ / ₄ " long x 3 ³ / ₈ " - 24 Threaded Adap. w/Washer & Nut Quick Change
173-09213	2522	1 ¹⁵ / ₁₆ " Adap. w/Set Screw for 1 ¹ / ₈ " Shank
173-09215	2523JD	1 ⁵ / ₁₆ " Adapter w/Set Screw for 1 ¹ / ₄ " Shank
173-09216	SLP9216	1 ⁵ / ₁₆ " Adapter w/Set Screw for 5 ¹ / ₁₆ " Shank
173-09400	SLP9400	Overhose Kit
173-00024	S1047XL	Extra Long Quick Chuck Adapter - 1-3/4" Threads
173-00025	S1047	Quick Chuck Adapter - Short Threads - 1"
173-00026	S1046D	Dual Head Quick Chuck Adapter
173-00027	S104138	3/8" Quick Change Adapter for 3/8" Burrs

HD Tire Buffers and CP Tire Buffers



LOW SPEED TIRE BUFFER KIT

• Hexagonal quick change slip chuck for fast and easy change of buffing wheel • Adjustable speed regulator for precise control • Reinforced & streamlined lock off throttle to prevent accidental start ups • Rear exhaust directs air away from work area • Composite housing for reduced vibrations • **FREE SPEED:** 3,000 RPM



158-00873

ASCOT NO.	MFG. NO.	DESCRIPTION
158-00873	CP873CK	Includes Over Hose
158-01873	CP873C	Low Speed Tire Buffer Only

HIGH SPEED TIRE BUFFER

• Composite housing for reduced vibrations • Jacobs chuck for holding buffing accessories • Reinforced & streamlined lock-off throttle • APPLICATIONS: tire patchwork, roughing areas for recapping and cleaning tire moldings • **FREE SPEED:** 22,000 RPM

ASCOT NO.	MFG. NO.	DESCRIPTION
158-00871	CP871CK	Includes Over Hose
158-01871	CP871C	High Speed Tire Buffer Only



158-00871

HD BUFFERS

MFG. NO	PRODUCT	SPEED RPM	AIR INLET NPT
10L108036	Air Grinder High Speed Metal Case 1/4" Collet Chuck	30,000	1/4"
12L108036	Air Grinder High Speed Composite Case 1/4" Collet Chuck	30,000	1/4"
12L108036OH	Air Grinder High Speed Overhose Composite Case 1/4" Collet Chuck	30,000	1/4"
15LF08340	Air Grinder Low Speed w/o Chuck	3,300	1/4"
117814	Die Grinder HD Retread 1/4" Collet	25,000	1/4"
123698	Exhaust Hose Assy for 117814 Die Grinder		
241160	Skive Buffer HD Q/C and Exhaust	4,000	1/4"
UG-60S-29	Uryu Tire Buffer-1/4" Collet- 0.5 hp	2,900	1/4"
UG-65EBL-ASSY	Uryu Horizontal Tire Buffer- 2.5" Wheel, 3/8" - 24 Spindle - 0.6 hp	14,600	3/8"
UG-1250LM	Uryu Horizontal Tire Buffer -5" Wheel, 1/2" - 20 Spindle - 1.0 hp	7,200	1/2"
CP873CHD	CP Composite HD Buffer	3,500	7/16"
CP873CHDES	CP Composite HD Buffer Extended Shaft	3,500	7/16"

URYU HEAVY DUTY HIGH SPEED PASSENGER/TRUCK BUFFER/SKIVER



UG-65EBL



UG65EBL

14,600 RPM for innerliners, tread & shoulder areas • Powerful tool for fast buffing/skiving • Muffled rear exhaust, lever throttle to control various speeds and heavy-duty four bearing construction for long life • Tool has 3/8" - 24 nf spindle to accommodate quick change chuck • Specs.: .60 hp, 14,600 rpm, wheel capacity diameter 2 1/2", minimum air hose 3/8" air inlet 1/4" fpt, average air consumption 7 cfm, operating air pressure 90 psi. • High Speed Buffer/Skiver - Mfr. No. UG-65EBL



UG-1250-LM



UG1250LM

URYU OTR Buffer/Skiver Cup Cutter • 7,200 RPM for OTR tires • Includes side exhaust hose & rear whip hose • Powerful tool handles heavy jobs • Governor controlled motor, lever throttle controls wide range of speeds, and muffled rear exhaust • Tool has 1/2"-13 nf spindle • Specs.: 1.2 hp, 7,200 rpm, wheel capacity diameter 5", minimum air hose 1/2", air inlet 3/8" fpt, average air consumption 11 cfm, operating air pressure 90 psi. • OTR Buffer/Skiver/Cup Cutter - Mfr. No. UG-1250-LM



CP873CHDES



10L108036

10L108036

12L108036



123698



117814



241160



Grinders & Drills (CP)

MINI ANGLE DIE GRINDER

- Compact, lightweight design for easy maneuverability • 90° angle head allows flexibility in confined areas • Complete with 1/4" and 6mm collet
- **APPLICATIONS:** high speed blending, smoothing, porting, and deburring in confined areas • **MAX RPM:** 22,500



157-00875

ASCOT NO.	MFG. NO.	DESCRIPTION
157-00875	CP875	Mini Die Grinder

MINI DIE GRINDER

- Compact, lightweight design for easy maneuverability
- Adjustable speed regulator for precise control • Complete with 1/4" and 6mm collet
- **APPLICATIONS:** high speed blending, smoothing, porting, and deburring in confined areas
- **MAX RPM:** 30,000



157-00876

ASCOT NO.	MFG. NO.	DESCRIPTION
157-00876	CP876	Mini Die Grinder

3/8" REVERSIBLE DRILL

- Teasing throttle for precise control • **APPLICATIONS:** Screwdriving, honing and heavy drilling • **FREE SPEED:** 2,600 RPM



157-78926

ASCOT NO.	MFG. NO.	DESCRIPTION
157-78926	CP789-R26	3/8" Reversible Drill

TEASING
THROTTLE

1/2" REVERSIBLE DRILL

- Teasing throttle for precise control • **APPLICATIONS:** heavy drilling, reaming, hole sawing and jobs requiring a lot of torque • **FREE SPEED:** 500 RPM



157-00789

ASCOT NO.	MFG. NO.	DESCRIPTION
157-00789	CP789-HR	1/2" Reversible Drill

Repair parts available

RPG Air Tools (Cont.)



RPG 1/2" REVERSIBLE AIR DRILL

- Quick change chuck retainer
- Exhaust hose • Side handle • **FREE**
- SPEED:** 500 RPM • **CHUCK SIZE:** 1/2"
- Swivel air inlet for ease of use



ASCOT NO. MFG. NO. DESCRIPTION

REPLACEMENT PARTS FOR 1/2" REVERSIBLE AIR DRILL

175-01035	253340	Side Handle Kit for A1035 Air Drill
175-11035	H025	Air Hose Exhaust Kit for A1035 Air Drill



AIR TOOL SPECIFICATIONS

ASCOT NO.	MFG. NO.	FREE SPEED (RPM)	AIR PRESSURE (PSI)	AIR CON. AVG (CFM)	AIR INLET (NPT)	HOSE SIZE	LENGTH	WEIGHT (LB.)
157-01035	A1035	500	90	4	1/4"	3/8"	7.5"	2.86
157-01038	A1038	2,200	90	6	1/4"	3/8"	8"	2.42

RPG 3/8" HEAVY DUTY AIR DRILL



157-01038

- Superior performance with a powerful 1/2 HP motor • Light weight of just 2.42 lb. makes it easy to use • Includes durable, heavy duty, industrial-style keyed chuck • **CHUCK SIZE:** 3/8" • **FREE SPEED:** 2,200 RPM

Video on proper air tool maintenance; make your tools last!
(También en español)

<http://vimeo.com/212944966/>



Scan Above

51 AIR TOOLS // RPG & IR AIR TOOLS

Air Drills, Air Screwdriver, Accessories



RPG 3" CUT-OFF TOOL

- Adjustable speed regulator for precise control
- Lock-off throttle to prevent accidental start-up
- Rear exhaust directs air away from work area
- Durable gears for top performance and long life
- **FREE SPEED:** 22,000 RPM



157-10874

REAR
EXHAUST

RPG 1/4" MINI ANGLE DIE GRINDER

- Compact, lightweight design for easy use
- **APPLICATIONS:** High speed blending, smoothing, porting and deburring in confined areas
- Right angle for easy maneuvering
- **FREE SPEED:** 22,000 RPM



157-10875

RIGHT
ANGLE

AIR TOOL SPECIFICATIONS

ASCOT NO.	MFG. NO.	FREE SPEED (RPM)	AIR PRESSURE (PSI)	AIR CON. AVG (CFM)	AIR INLET (NPT)	HOSE SIZE	LENGTH	WEIGHT (LB.)
157-10874	A874	22,000	90	5	1/4"	3/8"	7.25"	1.75
157-10875	A875	22,000	90	5	1/4"	3/8"	5"	1

HEAVY DUTY ANGLE AIR DIE GRINDER

- For work in confined areas
- Features a right angle head
- **APPLICATIONS:** For grinding, porting, polishing, deburring, breaking sharp edges
- Self-locking throttle lever
- Positive grip 1/4" capacity collet chuck



157-00302

ASCOT NO.	MFG. NO.	DESCRIPTION
157-00302	IR-302B	Heavy Duty Angle Air Die Grinder

HEAVY DUTY AIR DIE GRINDER

- **APPLICATIONS:** Designed for porting, light weld grinding and breaking sharp edges
- 25,000 RPM
- Self-locking throttle lever
- Positive grip 1/4" capacity collet chuck with two collet wrenches



157-00308

ASCOT NO.	MFG. NO.	DESCRIPTION
157-00308	IR-308B	Heavy Duty Air Die Grinder

SUPER DUTY MINI AIR DIE GRINDER

- **APPLICATIONS:** For grinding, edge-breaking, de-burring, porting and polishing
- Right-angle configuration
- Compact, lightweight and easy to handle

COMPACT
& LIGHT
IN WEIGHT

EASY
TO
HANDLE



157-00307

ASCOT NO.	MFG. NO.	DESCRIPTION
157-00307	IR-307B	Super Duty Mini Air Die Grinder



Finishing Tools & Air Drills (IR)

QUICK REFERENCE CHART

IR NO.	ASCOT NO.	DESCRIPTION
IR-301-2MK	157-03012	Surface Conditioning Kit
IR-311A	158-00311	Heavy Duty Dual Action Quiet Air Sander 6" Pad
IR-326	157-00326	Heavy Duty 2-7/8" Air Cut-Off Tool
IR-313A	157-00313	Heavy Duty Angle Air Sander 7" Pad
IR-317A	158-00317	Heavy Duty High Speed Air Sander 5" Pad
IR-319A	158-00319	Heavy Duty Verticle Air Sander 7" Pad

3/8" HEAVY DUTY AIR DRILL

- Planetary gear reduction balances the load on bearings and gears, increasing tool life • Variable speed throttle makes starting holes easy
- Positive action trigger stop reduces maximum speed at any time

VARIABLE
SPEED
THROTTLE



157-17802

ASCOT NO.	MFG. NO.	DESCRIPTION
157-07802	IR-7802A	Standard Air Drill
157-17802	IR-7802RA	Reversible Air Drill

1/2" HEAVY DUTY AIR DRILL

- **APPLICATIONS:** Designed for drilling, hole sawing, cylinder honing and other jobs that call for a 1/2" size
- Industrial grade 1/2" chuck, ball and needle bearing construction and double reduction planetary gearing for longer life • No-load speed of 500 RPM and auxiliary side handle

INDUSTRIAL
GRADE 1/2"
CHUCK



157-17803

ASCOT NO.	MFG. NO.	DESCRIPTION
157-07803	IR-7803A	Standard Air Drill
157-17803	IR-7803RA	Reversible Air Drill

HIGH SPEED TIRE BUFFER

- Lever style tease trigger with lock-off for easy operation • Quick change chuck for easy buffing



157-00327

LEVER-
STYLE
TEASE
TRIGGER

QUICK
CHANGE
CHUCK

ASCOT NO.	MFG. NO.	DESCRIPTION
157-00327	IR-327	High Speed Tire Buffer

HEAVY DUTY AIR LOW SPEED TIRE BUFFER

- **APPLICATIONS:** For quick work of patchwork and roughing up low areas for recapping, tire scuffing and cleaning tire moldings • Free speed up to 3,000 RPM • 1/2 HP motor

HEAVY
DUTY



157-01327

ASCOT NO.	MFG. NO.	DESCRIPTION
157-01327	IR-327LS	Heavy Duty Air Low Speed Tire Buffer, includes Over Hose

HEAVY DUTY AIR ANGLE SANDER 7" PAD

- Heavy-duty motor handles tough jobs • Lightweight at only 4.5 lb. (2.04 kg.) • Ball Bearing construction for increased tool life
- **APPLICATIONS:** rouging body filler, removing rust, and smoothing welds



157-00313

ASCOT NO.	MFG. NO.	DESCRIPTION
157-00313	IR-313A	Heavy Duty Air Angle Sander 7" Pad



Air Tool Lubricants & Conditioner

BLASTER AIR TOOL CONDITIONER

• **APPLICATIONS:** Thoroughly cleans internal pneumatic tool parts, restoring them to peak performance and prolonging tool life • Breaks loose deposits that create friction and impede smooth operation • Provides long-lasting lubrication • Protects tools from freezing down to -25°F • 12 cans per case



181-01404



181-00404

ASCOT NO.	MFG. NO.	DESCRIPTION
181-00404	16-ATL	Blaster Air Tool Conditioner - 16 Oz.
181-01404	ATC-TS	Blaster Air Tool Conditioner - 3.5 Oz. Aerosol

BLASTER AIR TOOL OIL/LUBE

• **APPLICATIONS:** Provides lubrication & prolongs tool life • Improves tool performance • Formulated for use with in-line oilers • 12 cans per case



181-00016

ASCOT NO.	MFG. NO.	DESCRIPTION
181-00016	16-ATL	Blaster Air Tool Oil/Lube - 16 Oz.

NUT LOOSENER PENETRATING BLASTER - 16PB

• **A penetrating lubricant that frees everything!** • Displace moisture by saturating troubled area and allow to stand for a few minutes. • 11 oz. spray - PB Blaster



PB Blaster

MARVEL AIR TOOL OIL

• **APPLICATIONS:** Specially formulated for use in all piston type rotary air tools and in-line air lubricators • Prevents rust formation while providing positive lubrication for smooth starting and longer tool life • Assures maximum performance by dissolving gum and sludge • 6 bottles per case



PROLONGS
TOOL LIFE



181-00085

ASCOT NO.	MFG. NO.	DESCRIPTION
181-00085	MM085	Marvel Air Tool Oil, 32 Oz.
	MM80R	Marvel Air Tool Oil, 8 oz.

SUPER RED PNEUMATIC AIR TOOL LUBRICANT

• **APPLICATIONS:** Dissolves gum & varnish formation • Prevents gum & varnish formation • Ensures smoother starts • Special rust & oxidation inhibitor • Clean and free running • 12 bottles per case



181-00406



DISSOLVES
GUM &
VARNISH



ENSURES
SMOOTHER
STARTS

ASCOT NO.	MFG. NO.	DESCRIPTION
181-00406	0406	Super Red Pneumatic Air Tool Oil, 32 Oz.

BLASTER 16ATC - AIR TOOL CONDITIONER

• **Restores & prolongs tool life - 11 oz.** • Provides a coating & lubrication for tools while in use • Inhibits rust, increases RPMGS for normal maintenance

16ATC
181-00404

ASCOT #	MCGEE #	DESCRIPTIONS
395-00016	16CBD	Blaster Citrus Degreaser - 11 oz.
417-00020	20BC	Blaster Non-Chlorinated Brake Cleaner - 14 oz.

KILFROST AIR TOOL OIL

• **Use KILFROST when the temperature drops below 45 degrees F** • Apply directly into air inlet of tool • Do not mix with other air tool lubricant • Absorbs moisture, de-ices frozen tools and keeps tools working to -60 degrees F • 16 Oz. with squirt spout • 12 per case



ABSORBS
MOISTURE



DE-ICES
FROZEN
TOOLS

ASCOT NO.	MFG. NO.	DESCRIPTION
181-84581	KILFROST-PINT-CASE	Kilfrost Air Tool Oil, 16 Oz.



181-84581

Safety Products

ASK US ABOUT OUR ANTI-FATIGUE MATS AND SPILL KITS FROM NEW PIG



ASCOT NO.	MFG. NO.	DESCRIPTION
396-61000	6100	Foam Ear Plugs, Uncorded (Blue) - Super-soft pre-shaped foam ear plugs (Dispenser box QTY: 200 pair)
396-61090	6109	Silicone Ear Plugs, Uncorded (Orange) - Triple flange design creates a secure fit (Dispenser box QTY: 200 pair)
396-61050	6105	Standard Ear Muffs - Lightweight muff-style hearing protector, under-the-chin, over-the-head or behind-head wear
396-61110	6111	Professional Ear Muffs - Superior protection, universal adjustment, comfortable and foldable, plush ear cups



EAR PLUGS

• **Ear Plugs:** Cylinder, 29 dB NRR, Gen Purpose, Uncorded, Disposable, Roll-Down, Yellow, 200 PK

• **Ear Plugs:** Contoured-T, 32 dB NRR, Gen Purpose, Corded, Disposable, 100 PK



ABSORBENT MATS

25103 - Universal Absorbent Drum-top Pads 20/bx

26201- PIG WTR RPL OIL ABS MAT WHITE 50 X15 LT-WT RL

25201 - PIG UNV LT WT ABS MAT GREY 50 X15 RL



PAPER TOWEL A TORK CENTER FEED 2 PLY AND RECOMMENDED DISPENSERS



MFG. NO.	WIDTH	DIAMETER	LENGTH	COMPATIBLE DISPENSER
130211	9"	11.3"	7'	653020 and 653028
130251A	9"	7.7"	419.8'	559020A, 559028A, 653020, 653028

RETREAD LOCKOUT TAGOUT KIT

MFG. NO.	DESCRIPTION
95080	LOTOK Wall Storage
95050	"Do Not Operate" Tags 25 pack (4)
95030	Padlock Keyed Same (16)
95040	Standard Steel Hasp (16)
95070	StopPlug Lockout (4)
LOTOKRTSK	Complete Retread Lockout Kit



LOTOKRTSK

Additional
Lockout
Kits



95055 - MAGNETIC RETRACTABLE BARRIER MAG-BEAR 25'

Enhanced Safety: Our 25ft Belt with printed "Caution - Do Not Enter" Warning, in a vibrant yellow color, ensures the utmost safety by effectively restricting access to hazardous areas • **Durable Protection:** The sturdy ABS protective case, featuring a striking black and yellow design, provides long-lasting protection for your equipment • **Designed with portability in mind,** this system can be easily moved and set up wherever needed, making it an indispensable tool for technicians on the go • **Prioritizing technician safety,** our system helps safeguard them while servicing equipment, preventing unauthorized access and potential accidents • **Magnetic Strength:** Equipped with six super strong magnets on the back and two on the belt end.



CLASS 2 SAFETY VEST

• **100% polyester mesh,** 2" wide reflective tape, hook-and-loop closure, ANSI/ISEA 107-2015 Class 2 Type R • Available in Orange (M-4XL) and Yellow* (M-3XL)

Cooling vests available CSVL & CSVXL



ASCOT NO.	MFG. NO.	DESCRIPTION
396-21208	692-1208	Safety Vest, Orange (Medium)
396-21209	692-1209	Safety Vest, Orange (Large)
396-21210	692-1210	Safety Vest, Orange (X-Large)
396-21211	692-1211	Safety Vest, Orange (2X-Large)
396-21212	692-1212	Safety Vest, Orange (3X-Large)
396-21213	692-1213	Safety Vest, Orange (4X-Large)
396-01208	690-1208	Safety Vest, Yellow (Medium)
396-01209	690-1209	Safety Vest, Yellow (Large)
396-01210	690-1210	Safety Vest Yellow (X-Large)
396-01211	690-1211	Safety Vest, Yellow (2X-Large)
396-01212	690-1212	Safety Vest, Yellow (3X-Large)

*There is no Yellow 4XL

GEMSTONE PROTECTIVE EYEWEAR - CLEAR

• **100 per box** • 6 mil Thickness • Texture Finish • Powder Free



GLASSES SAFETY BLACK / CLEAR FRAMES

• **Safety glasses** with clear lens • Anti-scratch/anti-fog • SG2 with smoke lens



Safety Products

COTTON WEAVE BLUE POLY PALM GLOVE

• **Cost and comfort combine to make this glove the economical palm coated glove choice** • Latex coating provides excellent grip in wet/dry conditions and offers abrasion resistance • Seamless cotton/polyester knit is comfortable and flexible • Knit Wrist helps prevent dirt and debris from entering the glove w/breathable back



C122

LEATHER PALM SHORT CUFF

• **Hi Vis versions available** (Nos. ABR, ABG, ABHVDC)



112

GLOVES HOT MILL LONG CUFF

• **Premium Grade** • Two-layer cotton canvas • Clute cut provides a roomy fit • Straight thumb increases comfort in closed-fisted work • Nap-out finish for heat resistance • Starched gauntlet cuff for added forearm protection, allows for fast removal and is washable for longer wear



2433GW

GLOVES LEATHER PALM SHORT CUFF PR

• **A split leather-palm glove best suited for tough rugged jobs** • Full split leather index fingers, leather tips, and a leather knuckle strap



TB725E

BLACK, ULTRA LIGHT POLYURETHANE PALM GLOVE

• **Perfect for handling small parts**
• Specify M, L, XL



GP180L

MNB-MCGEE NAIL BRUSH

• **Double sided brush effectively removes dirt, grease, and oil from hands and beneath fingernails** • Designed with a comfortable, ergonomic handle, the brush features bristles that are sturdy enough to tackle stubborn grime without harming the skin • The opposite side of the brush includes finer bristles, perfect for cleaning under fingernails.



SUPER TOUGH HAND SCRUB

• **The best hand cleaner available** • Leaves hands soft and chap free • Removes dirt and grease quickly • Dispenser 395-06402



TS64

ASCOT NO.	MCGEE NO.	DESCRIPTION
395-00640	TS64	64 oz. tub
	TS1GAL	NP No Pump available

TUFF SCRUB CLEANER IN A LIQUID

• **Easy to use pump style**



TS1GAL

HI TACTILE GLOVES

• **Easy to clean** • Long lasting
• Light and durable • Outlast other gloves 10 to 1!

Large # 143212
Ex-Large # 143312

Go Jo®



MECHANICS GLOVES

• **HD Mechanics** • Yellow Accents

Large - PGP45TL
X-Large - PGP45TXL



MICRO DIAMOND NITRILE GLOVES

• **6 mil, 100 per box, 50 pr.**

ASCOT NO.	MCGEE NO.	COLOR	SIZE
396-00302	32806BK240R3	Black	Medium
396-00303	32806BK240R4	Black	Large
396-00304	32806BK240R5	Black	X-Large
396-00402	32806OR240R3	Orange	Medium
396-00403	32806OR240R4	Orange	Large
396-00404	32806OR240R5	Orange	X-Large



MFXM300XL

TIRE CHANGING GLOVE - NITRILE PALM

• **Specify M, L, XL**



AG305HVTL

DEADBLOW HAMMERS

• **Economy Strike Pro T336 safety orange 1.5" 12"** • Head is shot filled for maximum force with no bounce effect • Safest non-marring, non-sparking hammers available • High quality materials to withstand years of hard use.

• **Professional Dead Blow TG333 3 lb head** • 14.5" Power-drive fiberglass handle gives 20% more driving power, yet reduces user fatigue



MC GEE COMPANY OFFERS FREE ASSEMBLY OF AIR HOSE TO YOUR REQUIRED LENGTH!

3/8" BLUE COIL HOSE

- **25' length** • 1/4" x 3/8" fittings
- 150 PSI • Polyurethane tubing
- Excellent abrasion resistance • Highly kink-resistant, withstands twisting or crushing • Easy to handle - 25% lighter than rubber • Made in Taiwan



123-13825

ASCOT NO.	MFG. NO.	DESCRIPTION
123-13825	3/8x25	25' Blue Coil Hose - 1/4" x 3/8" Fittings - 150 PSI

ADDITIONAL SIZES AVAILABLE 12'-50' WITH 1/4"-3/8" SWIVEL FITTINGS

AIR HOSE



- **Rubber Air Hose** • 1/4", 3/8" & 1/2" Multi Purpose Air Hose Assemblies Smooth cover, 300 PSI W.P., 1,200 lb. burst. Limited oil resistance tube & cover. Red.

MFG. NO.	DESCRIPTION
W64RJ25	25', 3/8" Hose, 1/4" MNPT
W64RJ50	50', 3/8" Hose, 1/4" MNPT
W84RJ25	25', 1/2" Hose, 1/2" MNPT
W84RJ50	50', 1/2" Hose, 1/2" MNPT



PREVOST FLEXAIR HOSE

MC GEE NO.	DESCRIPTION
RISB3850	3/8" hose with Ind 1/4" fitting 50 ft
RUSB3850	3/8" hose with Auto 1/4" fitting 50 ft



Each hose includes 1/4" Prevost coupler and nipple



C-SERIES LOW PRESSURE HOSE REELS

- **Reels ideally suited for plant maintenance, service trucks or other industrial functions** • Standard hose for air and water
- Single set screw to access spring casing
- Drive spring mechanism lubricated for life
- One piece combination latch, spring arbor, main bearing and spool support for fewer moving parts • Brass swivel reduces corrosion potential • Durable powder coated finish



HOSETRACT®

ASCOT NO.	MC GEE NO.	OPERATING PRESSURE	HOSE ID	HOSE LENGTH	SHIP WEIGHT
125-35000	LC350	300 psi	3/8"	50'	54 Lbs.
125-55000	LC550	300 psi	1/2"	50'	60 Lbs.

COUPLERS & NIPPLES

- **Steel plated couplers with hardened steel balls and stainless steel springs** • Plugs heat-treated to reduce wear on critical mating surfaces
- Interchange with Tru-Flate 10 and 100 type series as well as units produced by other manufacturers • Maximum working pressure 300 psi.



131-61523

131-61524

131-61539

131-62523

131-61579

Automotive Series

ASCOT #	DILL NO.	MILTON NO.	AMFLO NO.	MC GEE NO.	THREAD	NPT
COUPLERS						
131-61523	D-13	785	C2	3504	Female	1/4"
131-61524	D-12	786	C1	3503	Male	1/4"
131-62523	D13R	--	--	3505	Female	1/4"

ADAPTER PLUGS						
131-61539	D-3C	784	CP2	3507	Female	1/4"
131-61538	D-2C	783	CP1	3506	Male	1/4"

Industrial Interchange

ASCOT #	DILL NO.	MILTON NO.	AMFLO NO.	MC GEE NO.	THREAD	NPT
COUPLERS						
131-61573	102	715	C20	5142-12	Female	1/4"
131-61574	103	716	C21	5141-12	Male	1/4"

ADAPTER PLUGS						
131-61578	110	727	CP21	5138-11	Male	1/4"
131-61579	109	728	CP20	5139-11	Female	1/4"



133-61563

133-61471

133-61569

133-01855
1/2" Nipple - 1/4" NPT

Automotive Series

ASCOT #	DILL NO.	MILTON NO.	AMFLO NO.	MC GEE NO.	THREAD	NPT
COUPLERS						
133-61563	D-17	1815	C10	3512	Female	1/2"
133-61564	D-16	1816	C9	3511	Male	1/2"
133-61471	D-17R	--	--	D17R	Female	1/2"

ADAPTER PLUGS						
133-61569	D-3F	1818	CP10	3514	Female	1/2"
133-61568	D-2F	1817	CP9	3513	Male	1/2"
133-61474	D-0F	1819	CP9-03	3537	Male	3/8"
133-01855	N/A	1855	N/A	1855MI	Male	1/4"

PREVOST 1/4" Automotive Style Couplers

- One hand push button design - red • Fits all 1/4" automotive style adapters • Longer lasting • Constructed of high impact tough composite material. Smooth finish will not scratch and will not hang up like traditional couplers • Press the button and the downstream air releases, and when the coupler is discharged it automatically releases adapter or hose, preventing dangerous hose whip • Use with any automotive nipple
- Industrial use with 513811, 513911, and 11E



URC061201
(red)

IRC061201
(blue)

MFR. NO	DESCRIPTION - AUTOMOTIVE	MFR. NO	DESCRIPTION - INDUSTRIAL
URC061201	1/4" FPT Automotive Coupler	IRC061201	1/4" FPT Industrial Coupler
URC061251	1/4" MPT Automotive Coupler		Use with industrial - blue button

Air Line Couplers & Plugs

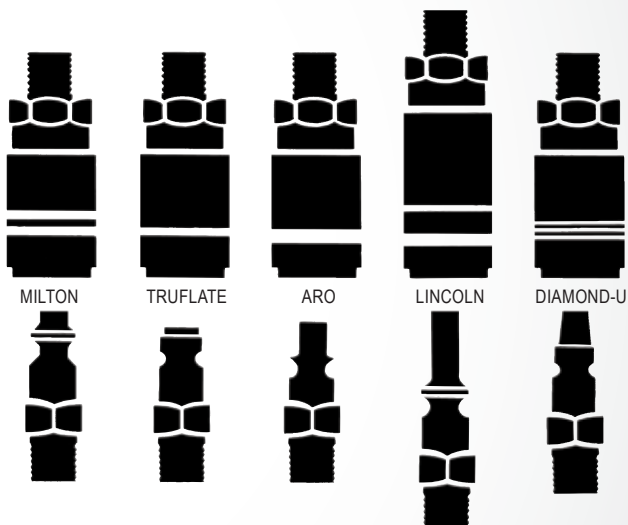
AIR FILTERS AND REGULATORS

MC GEE #	TYPE	DESCRIPTION	SIZE
N33354	Combi	FILTER REGULATOR LUBRICATOR COMBI 1/2"	1/2"
N33352	Combi	FILTER REGULATOR LUBRICATOR COMBI 1/4"	1/4"
N33376FM	Combi	FILTER REGULATOR LUBRICATOR COMBI 3/4"	3/4"
N33353	Combi	FILTER REGULATOR LUBRICATOR COMBI 3/8"	3/8"
F354FW	Filter	FILTER W/ METAL BOWL AND AUTO DRAIN 1/2"	1/2"
F352W	Filter	FILTER PARTICULATE W/ METAL BOWL 1/4"	1/4"
F376W	Filter	FILTER PARTICULATE MID FLOW W/METAL BOWL 3/4"	3/4"
F353W	Filter	FILTER PARTICULATE W/ METAL BOWL 3/8"	3/8"
B754TW	Filter/Reg	FILTER REGULATOR T HANDLE METAL BOWL 1/2"	1/2"
B742	Filter/Reg	FILTER REGULATOR 1/4"	1/4"
B752TW	Filter/Reg	FILTER REGULATOR T HANDLE METAL BOWL 1/4"	1/4"
B753TW	Filter/Reg	FILTER REGULATOR T HANDLE METAL BOWL 3/8"	3/8"
L354W	Lubricator	LUBRICATOR TRI STAR W/METAL BOW 1/2"	1/2"

MC GEE #	TYPE	DESCRIPTION	SIZE
L352W	Lubricator	LUBRICATOR TRI STAR W/METAL BOWL 1/4"	1/4"
L376M	Lubricator	LUBRICATOR MID FLOW W/METAL BOWL 3/4"	3/4"
L353W	Lubricator	LUBRICATOR TRI STAR W/METAL BOWL 3/8"	3/8"
R354T	Regulator	REGULATOR TRI STAR WITH T HANDLE 1/2"	1/2"
R352T	Regulator	REGULATOR TRI STAR WITH T HANDLE 1/4"	1/4"
R352	Regulator	REGULATOR TRI STAR 1/4"	1/4"
R376	Regulator	REGULATOR MID FLOW 3/4"	3/4"
R353T	Regulator	REGULATOR TRI STAR WITH T HANDLE 3/8"	3/8"



HOW TO
DESIGN AN
EFFICIENT
SYSTEM



AIR LINE COUPLERS & PLUGS:

Identification Chart

DILL NO.	MILTON NO.	AMFLO NO.	SCHRADER NO.
1/4" TRU-FLATE AUTOMOTIVE TYPE			
C1	786	D-12	3503
C2	785	D-13	3504
C2R	787	D-13R	3505
CP1	783	D-2C	3506
CP2	784	D-3C	3507
CP12	779	D-6C	3508
CP14	481	D-7CR	3510
CP1-302	—	D-5C	3533
1/4" "ARO" SPEED SERIES TYPE			
C38	775	8888	3526
CP37	777	8891	3529
CP38	778	8889	3530
1/4" INDUSTRIAL INTERCHANGE TYPE			
CP21	727	110	5138-11
CP20	728	109	5139-11
C21-103	719	—	5140-12
C21	716	103	5141-12
C20	715	102	5142-12
—	711	—	5142C-D
CP21-42	736	—	5223-11
CP21-103	733	115	5263-11
C20-23	718	—	5263-12

DILL NO.	MILTON NO.	AMFLO NO.	SCHRADER NO.
1/4" LINCOLN LONG STEM TYPE			
C28	790	123	3528
CP27	791	126	3531
CP28	792	125	3532
3/8" TRU-FLATE TYPE			
C5	1806	—	3515
C6	1805	D-15	3516
CP5	1807	D-2E	3517
CP6	1808	D-3E	3518
CP7	1809	D-03	3519
CP8	1810	—	3520
C8	1803	D-15C	3521
3/8" INDUSTRIAL INTERCHANGE TYPE			
C26	1835	117	3541
CP25	1837	122	3542
CP26	1837	12	3543
1/2" TRU-FLATE TYPE			
C9	1818	D-16	3511
C10	1815	D-17	3512
C10R	—	D-17R	—
CP9	1817	D-2F	3513
CP10	1818	D-3F	3514
CP9-03	1819	D-0F	3537



McGee Company

Since 1951

1-800-525-8888

Albuquerque
4412 Prospect NE
Albuquerque, NM 87110

Atlanta
3922 Shirley Dr
Atlanta, GA 30336

Dallas
8504 Chancellor Row
Dallas, TX 75427

Denver
1140 S. Jason St.
Denver, CO 80223

Salt Lake City
1101 S. 700 W.
Salt Lake City, UT 84104

Automotive Service Equipment

Tire Service Supplies

Compressed Air Specialists

Alignment Equipment & Tools

Hunter
Cemb
Specialty Products

Air Compressors & Accessories

Quincy
Champion
CP
Hankison
Becker
Wilkerson
AirCom
Prevost

Balancing Equipment

Coats
Cemb
Hunter
Haweka

Battery & Starting Equipment

Schumacher
Associate
Milwaukee

Brake Equipment

Ammco
Hunter
Accutrun

Tire Changing & Handling Equipment

Cemb
Coats
Branick
Ken-Tool
Hunter

Diagnostic & AC Equipment

OTC/Bosch/Robinair
CPS
RTI
Autel
Ateq

Air Tools

RPG
Chicago Pneumatic
Ingersoll Rand
Milwaukee

Lifting Equipment

Rotary
Norco
AC Hydraulic
AFF
RPG

Lubrication Equipment

Graco
Banjo
Rhino Tank
Roth Tank
Superior Storage Tanks
Alpha
Balcrank

Retreading Equipment

Jet
Monarch
Vulcan
Cincinnati

Retread Supplies

Jet
Pincott
B&J
Robbins
Presti

Tire Chains

Laclede
AutoSock

Tire Repair

Rema
Prema
Jet
Tech

Valve Hardware

Schrader
Dill
Haltec

Wheel Weights

Bada
Ascot
Perfect
Plombco
CounterAct
IMI

Tire Studs & Equipment

Ugigrip
OKU

Additional Products

Calcium Pumps
Parts Washers
Tire Mounting Compounds
Welding Equipment
Headlight Aimers
Hose Reels
Spring & Strut Service Equipment
Tire Inspectors & Spreaders
Tire Storage Racks
Alignment Shims & Bushing
Exhaust Hose
Hand Cleaner
Wheel Studs & Nuts
Reconditioned Equipment
Impact Sockets



Financing options available
on equipment through:



HUNTER
Engineering Company

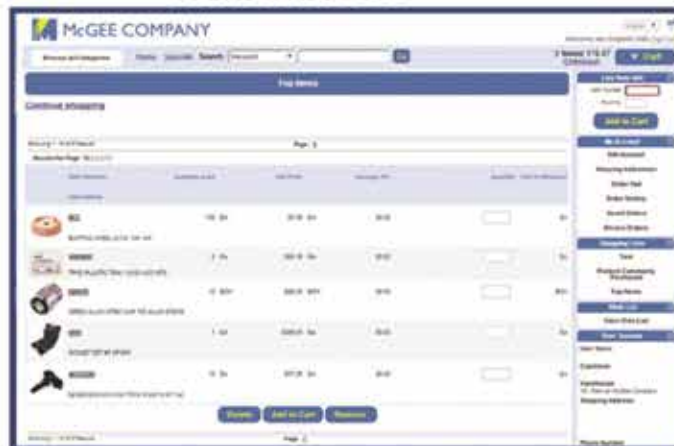
Rotary

Jet

AMMCO® GOATS
Hennsey Industries

GRACO

Quincy
COMPRESSORS



McGee Company operates out of a variety of vehicles to ensure you get the best service in your area!



McGee Company
1140 South Jason Street
Denver, CO 80223

Online fillable
version:



Toll Free: (800) 525-8888 Phone: (303) 777-2615 Fax (303) 777-7140
Credit Customers: Please Complete All Information And Signature For Review
COD Customers: Please Complete Top Portion And Signature

ACCOUNT APPLICATION

Legal Name: _____ DBA: _____
Phone: _____ Fax: _____ Website: _____
Billing Address: _____
Street City State Zip
Shipping Address: _____
Street City State Zip
Attached copy of W9 Y N Attached Resale Certificate Y N Years in Business: _____
AP Contact: _____ Email: _____ Email Invoice: Y N
Type of Ownership: Corporation _____ Partnership _____ Individual _____ Other: _____ Federal ID: _____
Owner: _____ Home Address: _____
Street City State Zip

REFERENCES

Name of Bank: _____ Name of Officer Handling Account: _____
Address: _____ Phone: _____

Trade References (Firms Currently Extending Credit)

1) _____ AP Contact: _____ Phone: _____
Street Address: _____
Street City State Zip
2) _____ AP Contact: _____ Phone: _____
Street Address: _____
Street City State Zip
3) _____ AP Contact: _____ Phone: _____
Street Address: _____
Street City State Zip

The Undersigned hereby applies for an account and/or credit and agrees, in consideration of the grant thereof which McGee Company, (the "Company") is not under any obligation to provide, as follows:

1. In the event of the undersigned's failure to pay any invoiced amount it owes the Company on the terms provided or in case the Company at any time deems itself insecure, all unpaid invoiced amounts shall, at the sole option of the Company, become immediately due and payable by the undersigned, without notice or demand.
2. If any invoiced amount is not paid when due or declared due pursuant to (1) above, the amount due and/or declared due shall draw interest at the maximum per annum rate allowed by the state.
3. The Undersigned agrees to pay all costs of collection, including reasonable attorney's fees, incurred or paid by the Company in enforcing its rights under the invoice.
4. I/We authorize the Company to make such investigation of our financial condition and the representations contained in this application as the Company may deem desirable.

Sign: _____ Name: _____ Title: _____ Date: _____

GUARANTY

For value received, the undersigned hereby unconditionally and irrevocably, personally guarantees to McGee Company, (the "Company") that all amounts owed to the Company under invoices to the undersigned and/or the above agreement shall be duly and punctually paid when due. If such amounts are not paid when due, the undersigned shall forthwith pay the same.

Sign: _____ Name: _____ Title: _____
Home Address: _____ SS#: _____ Date: _____
Street City State Zip

QUOTES AND NOTES

McGee Company



DATE	PART #	PRICE

NOTES

THANK YOU FOR YOUR BUSINESS!

**Contáctenos
para obtener
literature en
español**



1-800-525-8888

Serving the Transportation Needs of North America!



**McGee
Company**

Since 1951

Atlanta, Albuquerque,
Dallas, Denver, Salt Lake

- Automotive Service Equipment
- Tire Service Supplies
- Retreading Equipment & Supplies
- Passenger/Truck/OTR
- Compressed Air Products

McGeeCompany.com



©2024 McGee Company

