

Wheel Mounting Procedures

Remove rust and dirt : Inspect all components : Snug wheel nuts : Torque to specification

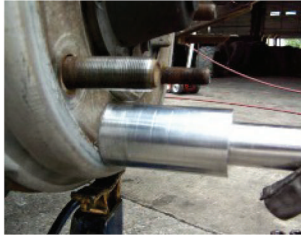
Remove rust and dirt from all mating surfaces



Wheel Openings and Pilot Pads



SC15563 Wire Brush & Q/C adapter



Wheel Studs



15701035 HD Low speed Air Drill w/QC Chuck



Wheel Mating Surfaces



SC14404 2 3/4" Abrasive Poly Brush



Hub and Brake Drum Face



SC14404 with Q/C Adapter



Wheel Nut and Flanges



44063 Wood Handle Brush



The SC100 Stud Cleaner uses three long lasting heavy duty carbon steel brushes to clean rust and debris from the stud threads to ensure proper torque.

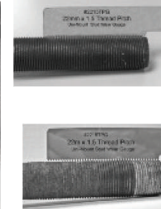
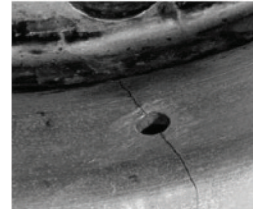
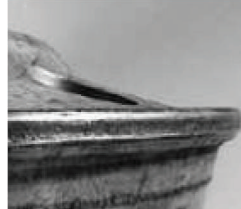
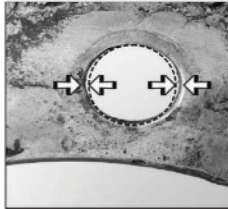
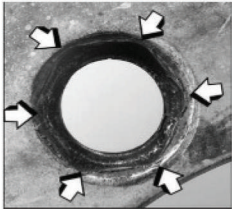


SC10157 1" Abrasive Poly Brush

SC100 Video:



Inspect all Components for Wear and Damage

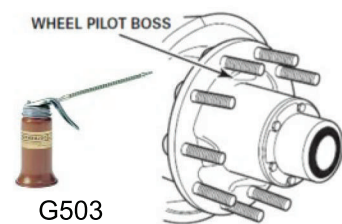


New Stud*

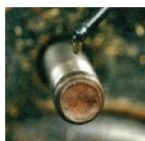
Worn Stud*

*2215TPG 22x 1/5 mm thread pitch gauge

Lubricate Mounting Pads, Studs and Nuts *** Uni-Mount Only ***



G503



Do NOT Lubricate the Hub Face, Wheel Face or Brake Drum.



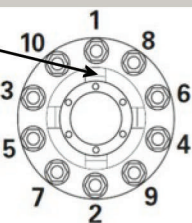
TIA recommends: lubricate Hub-Pilot studs and nuts with 2 drops 30w oil before tightening

Pre-Torque Wheel Nuts to 65 ft lbs

Rotate Wheel Mount Pad to 12 o'clock



28065 65# torque limiting extension



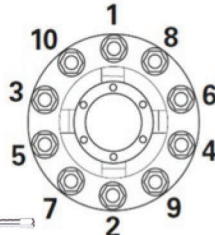
Tighten Wheel Nuts to Final Torque



Short Shank 1" dr Impact with torque limiting extensions



KT130940



NEW OSHA 29 CFR 1910.177 wheel mounting procedure manual and charts. These are required by OSHA to be displayed in truck tire service areas or carried in road service trucks \$7.75 each.

Booklet #OSHA24



4AR1 or 600FHTW Break Back Torque Wrench



McGee Company
Since 1951

Automotive Service Equipment
Tire Service Supplies **Compressed Air Specialists**

1-800-525-8888