



CONTENTS:

Page 1 **Specifications**
Page 2 **Warning Information**
Page 3-5 **Assembly**
Page 6 **Operating Instructions**
Page 7-8 **Preventative Maintenance**
Page 9 **Troubleshooting**
Page 10 **Diagram**
Page 11 **Parts List**
Page 12 **Warranty Information**



SPECIFICATIONS

Capacity	4 Ton
Low Height	4.30"
High Height	20.50"
Overall Length	28.80"
Weight	105 LBS



WARNING:

Read all instructions and safety warnings before operating this equipment. Failure to follow the instructions and safety warnings may result in personal injury or property damage.

WARNING

The use of portable automotive lifting devices is subject to certain hazards that cannot be prevented by mechanical means, but only by the use of care and common sense. It is essential to have qualified personnel involved in the use and operation of this lifting equipment that have been trained and qualified in its safe operation and proper use. Examples of hazards are dropping, tipping, or slipping of loads caused primarily by improperly securing loads, overloading, off-centered loads, use on poor surfaces, and/or using the equipment for a purpose for which it was not designed.

It is the responsibility of the owner and operator to study and understand this product and follow the safety instructions prior to operating this equipment. If the operator is not fluent in English the product and safety instructions shall be read and discussed in the operator's native language by the purchaser, owner, or his designee.

A copy of these instruction/warnings should be kept intact and located in a convenient location for future reference. If the manual is lost or not readable contact SureWerx for a digital copy.

Methods to Avoid Hazardous Situations

- Do not use exceed the rated capacity of 8,000 lbs (4 tons.)
- Do not adjust the safety overload valve.
- Position the jack in a suitable working area preferably on a flat and hard surface.
- Inspect the jack before each use. Do not use if damaged, altered, modified, in poor condition, or leaking hydraulic fluid. Make corrections before using.
- Chock wheels of vehicle before use.
- Ensure the vehicle engine is turned off, handbrake is engaged, and no passengers are inside the vehicle.
- Consult vehicle manual for location of approved lifting points.
- Check that the lifting point is stable and centered on the jack saddle
- This device is for lifting only. Use correctly rated safety stands before proceeding with any task.
- Ensure there are no persons or obstructions beneath the vehicle before lowering.
- Ensure that only hydraulic jack oil is used in the jack.
- When not in use store jack fully lowered in a safe and dry location.
- The warnings, precautions, and instructions discussed in this manual cannot cover all possible conditions and situations that may occur. The operator must understand that common sense and caution are factors which cannot be built into this product, but must be supplied by the operator.

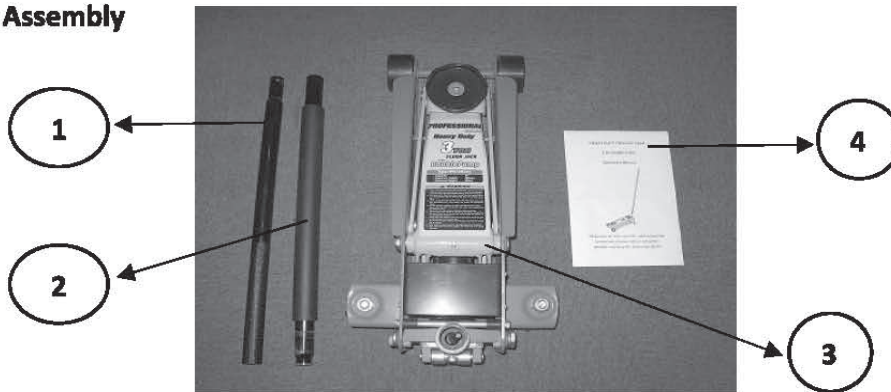


ASSEMBLY

Fig. 1
Packing list

No.	Description	Qty
1	Handle tube 1	1
2	Handle tube 2	1
3	Jack body	1
4	Instruction Manual	1

Fig. 2
Handle Assembly



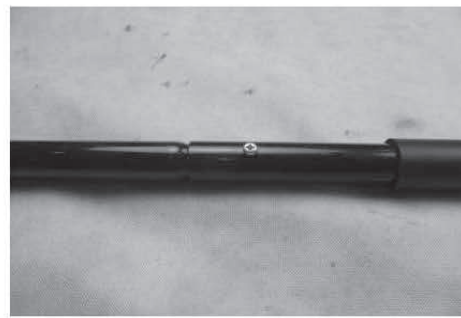
(1) Handle Tube 1



(2) Unscrew the bolt from
Handle Tube 1



(3) Insert Tube 2 into Tube 1



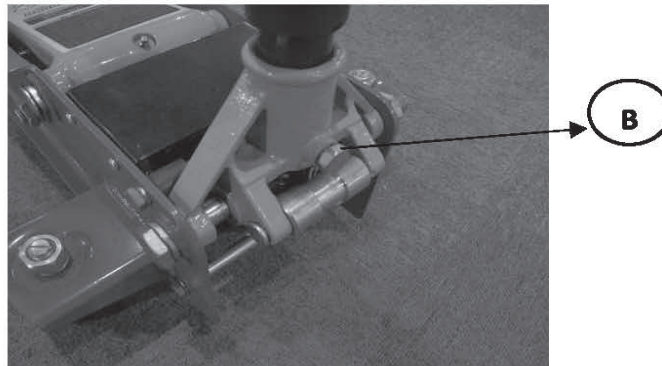
(4) Tighten bolt



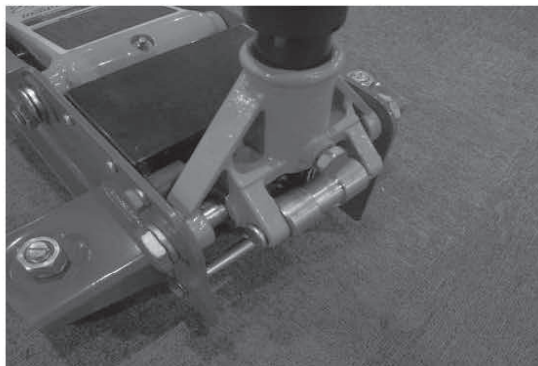
ASSEMBLY



1. The pump base is pressed down and supported by a nylon support block for shipping. Remove block prior to use.
2. Turn fastener (B) by the pump base counterclockwise without fully removing it from the base.



3. Insert the pump handle completely into the pump base.



4. Ensure that the handle is fully inserted into the pump base and retighten the fastener. Verify that the handle can turn smoothly.

ASSEMBLY

Hydraulic System Purging

1. Open the release valve by turning the Jack handle two full turns in a counter-clockwise direction.
2. Pump the handle a minimum of four full strokes in rapid succession.
3. Close the release valve by turning the Jack handle in a clockwise direction.
4. Pump the handle with full strokes to check if it can reach maximum height with seven pumps.
5. If Jack cannot reach maximum height with seven pumps refer to the following purging process:
 - a. Open the release valve by turning Jack handle in a counter-clockwise direction and lower the jack to minimum height.
 - b. Close the release valve by turning Jack handle in a clockwise direction.
 - c. Loosen the hexagon screw on the piston as follows:



Loosen the hexagon screw



1. When loosening the screw use circlip pliers or something similar as shown above
2. Use Allen wrench to slightly loosen the screw as shown above
3. Pump the handle lightly until hydraulic oil overflows from the hexagon screw
4. Retighten hexagon screw using both Allen wrench and circlip pliers



OPERATING INSTRUCTIONS

1. **IMPORTANT:** Before use the operator is to visually inspect the jack for cracked welds, damaged or missing parts, and/or hydraulic leaks.

RAISING A LOAD

- Ensure that the jack and the vehicle are on a hard and level surface.
- Verify the vehicle's wheels are chocked.
- Consult the vehicle manual for correct location of lift points. Position the jack under a suitable lift point.
- Turn the jack handle clockwise to close the release valve. Do not over-tighten.
- Raise the vehicle to the desired height by pumping the handle up and down.
- Place safety stands beneath the locations recommended by the vehicle manufacturer
- Turn the release valve counterclockwise to lower the vehicle onto the safety stands.

LOWERING A LOAD

- Turn the jack handle counterclockwise to close the release valve.
- Pump the handle to raise the vehicle off the safety stands.
- Remove the safety stands from beneath the vehicle.
- Turn the release valve slowly in a counterclockwise direction to lower the vehicle to the ground.

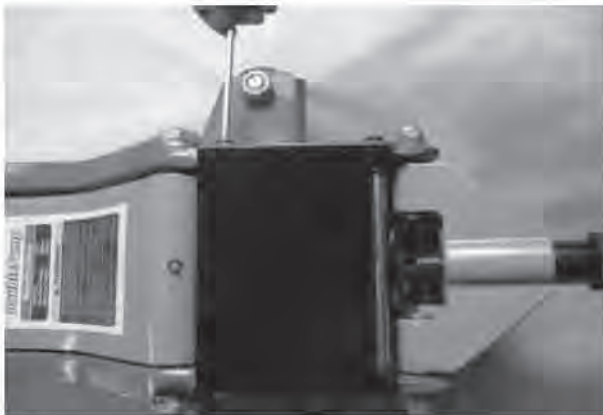


PREVENTATIVE MAINTENANCE

1. **Keep jack surface and warning labels clean and free of dust.**
2. **Perform regular inspection before and after use. Check for leaks, cracking, signs of rust, or any other damage. If any of these signs exist repair or replace the jack.**
3. **Release all pressure in the jack cylinder after use and before storage.**
4. **Always store jack on its base and not its side to avoid potential leaks.**
5. **Lubricate casters, hinges, and pump mechanism with a heavy-duty grease every 3 months.**
6. **If the pump handle becomes difficult to move the hydraulic oil may be too low. See below:**

ADDING OIL:

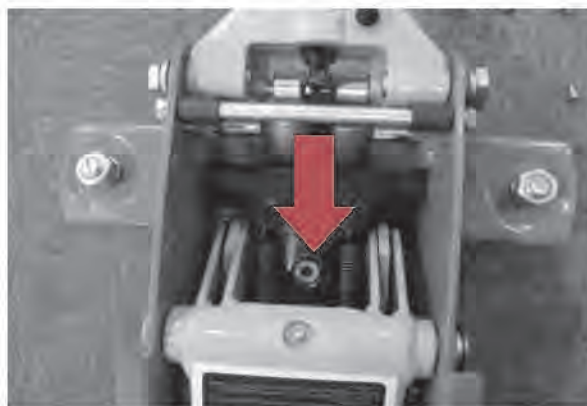
1. **Fully retract the ram by turning the jack handle counterclockwise**



2. **Undo each of the 4 retaining screws**



3. **Remove the top plate**



4. **With the jack in a level position remove the oil filler plug**



PREVENTATIVE MAINTENANCE



- 5. Use only quality hydraulic jack oil and fill reservoir with about a 1/2 inch of space remaining. Do not fill to the top.**



- 6. Cover the top plate and retighten fasteners**

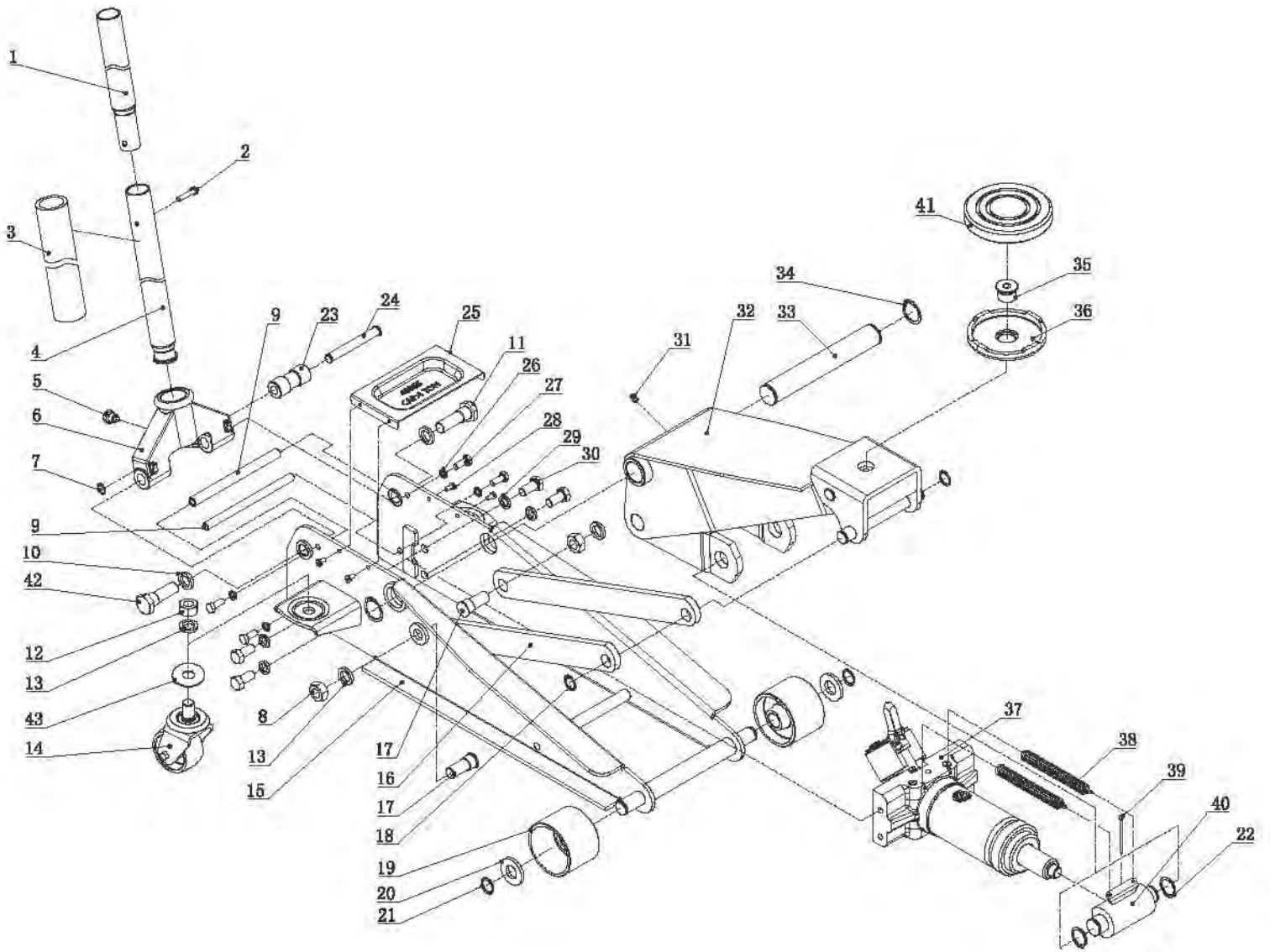
After adding oil check to see that there is no air in the hydraulic system. Close the release valve in a clockwise direction and begin pumping the handle. If the jack cannot reach maximum height with 8 pumps refer to the air purging process in the Assembly section.

■ TROUBLESHOOTING

PROBLEM	POSSIBLE CAUSE	SOLUTION
Jack will not lift to full height	<ol style="list-style-type: none"> 1. Oil level low 2. Release valve not closing 	<ol style="list-style-type: none"> 1. Check/add oil 2. Close the release valve
Jack will not hold the load	<ol style="list-style-type: none"> 1. Release valve is not closing 2. Hydraulic oil is contaminated 3. Pump is leaking 	<ol style="list-style-type: none"> 1. Close the release valve 2. Replace hydraulic oil 3. Contact an authorized repair depot
Lift arm will not lower	<ol style="list-style-type: none"> 1. Pump cylinder is binding 2. Parts are worn or damaged 3. Internal components are worn or damaged 4. Return spring is broken or unhooked 5. Lift arm linkage is damaged 6. Air continues to exist in hydraulic system 	Contact an authorized repair depot
Poor lift performance	<ol style="list-style-type: none"> 1. Hydraulic fluid level is low 2. Hydraulic unit malfunction 	<ol style="list-style-type: none"> 1. Ensure proper fluid level 2. Discontinue use and contact an authorized repair depot



FLOOR JACK DIAGRAM





FLOOR JACK PARTS LIST

PART NUMBER	PART NUMBER	DESCRIPTION	QTY
1	400SS.1	UPPER HANDLE	1
2	400SS.2	BOLT	1
3	400SS.3	HANDLE COVER	1
4	400SS.4	LOWER HANDLE	1
5	400SS.5	SCREW	1
6	400SS.6	HANDLE BASE	1
7	400SS.7	RETAINER RING	1
8	400SS.8	NUT	2
9	400SS.9	LIMITED ROD	2
10	400SS.10	LOCK WASHER	2
11	400SS.11	BOLT	1
12	400SS.12	NUT	2
13	400SS.13	LOCK WASHER	4
14	400SS.14	CASTER	2
15	400SS.15	FRAME	1
16	400SS.16	ADJUSTED PLATE	2
17	400SS.17	SCREW	2
18	400SS.18	RETAINER RING	2
19	400SS.19	FIXED WHEEL	2
20	400SS.20	WASHER	2
21	400SS.21	RETAINER RING	2
22	400SS.22	RETAINER RING	2
23	400SS.23	ROLLER	1
24	400SS.24	ROLLER PIN	1
25	400SS.25	TRAY TOOLS	1
26	400SS.26	LOCK WASHER	4
27	400SS.27	BOLT	4
28	400SS.28	SCREW	4
29	400SS.29	LOCK WASHER	4
30	400SS.30	BOLT	4
31	400SS.31	OIL CUP	1
32	400SS.32	LIFTING ARM	1
33	400SS.33	PIN ON LIFTING ARM	1
34	400SS.34	RETAINER RING	2
35	400SS.35	SCREW	1
36	400SS.36	SADDLE	1
37	400SS.37	PUMP	1
38	400SS.38	SPRING	2
39	400SS.39	COTTER PIN	1
40	400SS.40	PUSH ROD	1
41	400SS.41	RUBBER PAD	1
42	400SS.42	BOLT	1
43	400SS.43	WASHER	2



1 YEAR LIMITED WARRANTY

SureWerx USA Inc. warrants, to the final purchaser, jacks and related service equipment distributed by it to be free from defects in material and workmanship for a period of 1 year from date of sale. This warranty covers SureWerx USA Inc. and Viking branded products.

If a jack or related equipment is determined to be defective during the warranty period, it will be repaired or replaced without charge provided that the equipment is shipped, transportation charges prepaid and with proof of purchase to SureWerx USA Inc. or to a designated field service depot.

This warranty does not apply to parts damaged from accident, overload, or abuse, nor does it apply to product which has been altered or used with special attachments other than recommended by the distributor or equivalent.

THERE ARE NO OTHER WARRANTIES OF ANY SORT, EXPRESS OR IMPLIED, AND SELLER SPECIFICALLY DISCLAIMS ANY WARRANTY OF MERCHANTABILITY OR OF FITNESS FOR ANY PARTICULAR PURPOSE. THE SELLER'S SOLE OBLIGATION, WHICH SHALL REPRESENT THE BUYER'S SOLE EXCLUSIVE REMEDY, SHALL BE TO REPAIR OR AT THE SELLER'S OPTION TO REPLACE ANY PRODUCT OR PART DETERMINED TO BE DEFECTIVE AS AFOREMENTIONED. IN NO EVENT SHALL THE SELLER BE LIABLE FOR ANY SPECIAL, DIRECT, INDIRECT, INCIDENTAL, CONSEQUENTIAL, OR OTHER DAMAGES OF A SIMILAR PRODUCTION TIME, OR LOSS OR EXPENSES OF ANY NATURE, INCURRED BY THE BUYER OR ANY THIRD PARTY.

For warranty information call SureWerx USA toll free at 800.323.7402