

# Operating Instructions & Parts Manual

## Automatic Truck Tire Spreader



Model No.	Maximum Tire Width	Maximum Tire Range
603-00825	18" R	22.5"

- Input Voltage: 220V 50/60HZ
- Working Air Pressure: 110-140 PSI (8-10 KG/CM<sup>2</sup>)
- Work Light Voltage: 12V

### SAFETY & WARNING INFORMATION



This is the safety notification symbol. This symbol will notify you of any potential injury hazards. Please follow all instructions that follow this symbol to avoid possible injuries or death.



Indicates a hazardous situation. If proper steps are not followed, death or serious injury could result.



### **IMPORTANT: READ ALL INSTRUCTIONS BEFORE USE**

Before using this product, be sure to read all content within this manual, ensuring that you understand the operating procedures, maintenance requirements and all safety warnings.

The owner and/or operator shall have an understanding of the product, its operating characteristics and safety operating instructions before operating this device. Safety information shall be emphasized and understood. If the operator is not fluent in English, the product and safety instructions shall be read to and discussed with the operator in the operator's native language by the purchaser/owner or his designee, making sure that the operator comprehends their contents.

## **⚠️ WARNING**

### **Actions to help prevent dangerous situations**

- Study, understand and follow all instructions before operating this device.
- Use only on hard, level surfaces.
- No alterations shall be made to this product.
- Please read the instruction booklet and all the directions listed on the sticker attached on the machine carefully and fully understand the contents before use, which is necessary for protecting the users from harm and the machine from damages.
- This machine is used for spreading tires or repairing protective casings of tires only. It can't be used for other applications. Our company will not accept any responsibility or consequence due to improper use.
- Keep the spreading hooks and claws clean in the process of spreading, to avoid slippage due to grease or other foreign objects, which will bring danger to the maintenance work.
- Do not use the machine when it obviously appears too old or when it is clearly twisted out of shape or when it's damaged, and make treatment in accordance with the local laws and regulations of waste management.
- The professionals that operate the machine should wear suitable safety goggles for overall eye protection.
- Failure to heed these warnings may result in serious personal injury and/or property damage.



### **Inspection**

- This device shall be inspected immediately if the device is believed to have been subjected to an abnormal load or shock. It is recommended that this inspection be made by a manufacturer's or supplier's authorized repair facility.
- Owners and/or operators should be aware that repair of this equipment may require specialized knowledge and facilities. It is recommended that an annual inspection of the product be made by a manufacturer's or supplier's authorized repair facility and that any defective parts, decals or safety labels or signs be replaced with manufacturer's or supplier's specified parts.



### **Damaged Equipment and add-ons**

Any tire spreader that appears to be damaged, is found to be worn or operates abnormally in any way will be **removed from service until proper repair can be done on the product.**

### **Alterations**

Because of potential hazards associated with this type of equipment, no alterations shall be made to the product.

### **Attachments and Adapters**

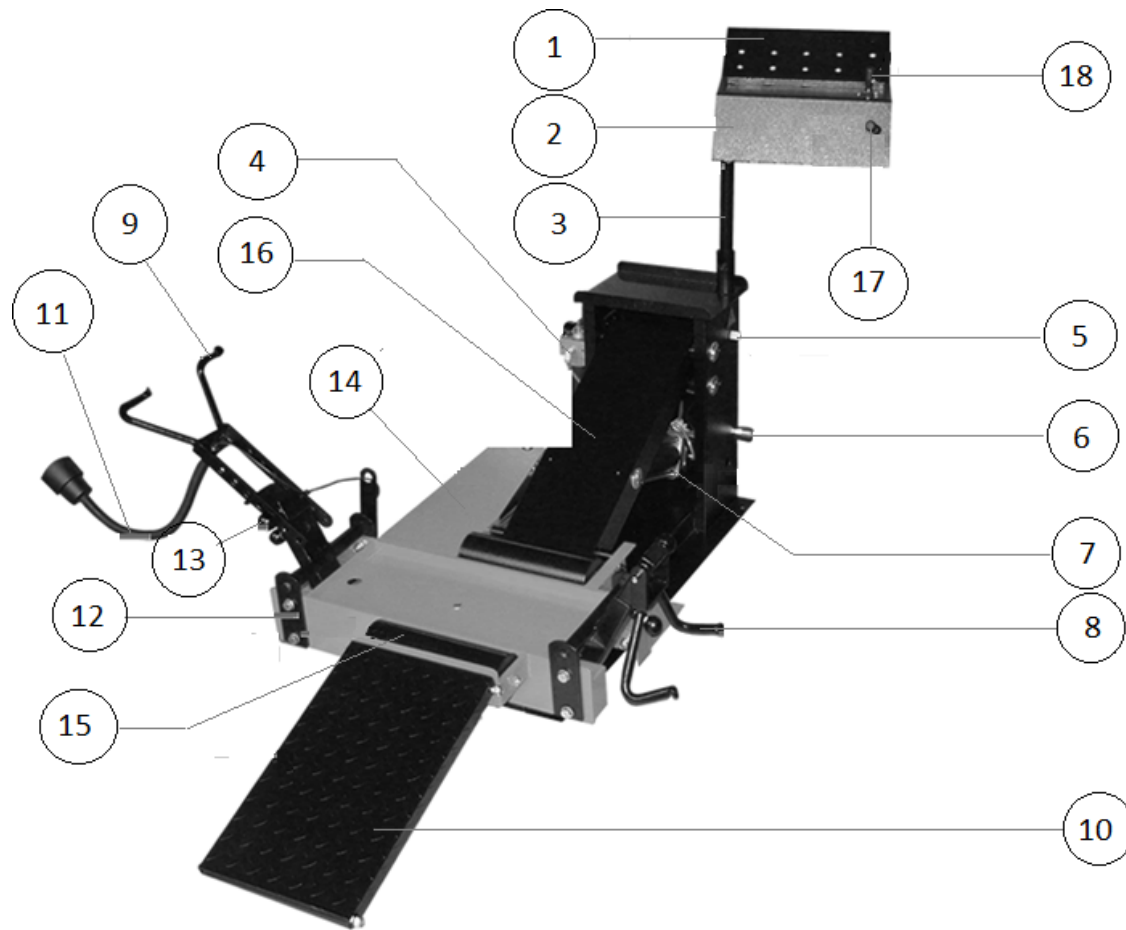
Only attachments and/or adapters (if available) supplied by the manufacturer shall be used.



### **Setup**

- Place this product on solid ground and keep it flat.
- Remove the backboard of the pneumatic control box (2) from the inclined support board.
- Take the fixed pin from the pneumatic control box (2).
- Put the pneumatic control box (2) on the top of the body box and adjust it to the correct position.
- Connect the tool tray (1) to the pneumatic control box (2).
- Connect the tire sloping board to the equipment.
- Connect the spread hook (9).
- Connect the short spread hook (8) to the equipment.
- Connect a fast joint at 1/4 normal temperature and moderate air pressure onto the fast joint on top of the machine's air inlet. The minimum standard is a 1/4 inch for every 100 square inches.
- Anchor on the ground with screws.

# PRODUCT STRUCTURE ILLUMINATION



NO	DESCRIPTION
1	Tool Tray
2	Pneumatic Control Box
3	Tool Rack
4	Air Regulator
5	Main Body Power
6	Pneumatic Union
7	Up & Down Pneumatic Cylinder
8	Short Spread Hook
9	Long Spread Hook
10	Tire Platform
11	Work Light
12	Up & Down Platform
13	Adjusting Valve
14	Spreader Pneumatic Cylinder
15	Tire Lever
16	Pneumatic Tool Union
17	Spreader Pneumatic Cylinder Control Valve
18	Up & Down Pneumatic Cylinder Control Valve

## **Operation**

- Before starting the machine, make sure the fasteners are tight.
- Place the tire on the tire spreader.
- Adjust the spreading claw to the appropriate height of the tire being repaired. Place the spreading hook to the link pin of the hanging device. Adjust the spreading hook, move the link pin and spreading hook up and down in order to insert into one of the adjusting holes. Put the short spread hook inside the tire and place the tire in the middle of tire leveler.
- Pull the spreading control valve to the direction of the spreading, and spread the tire to the width needed. If the tire disengages from the tire spreader, the spreading hook arm is too high. Lower the spreading hook arm and operate after the height is properly adjusted.
- Pull the control valve to the direction needed, raise the tire to appropriate height.
- In order to rotate the tire to a new position, pull the spreading control valve to the direction of contraction, rotate the tire to the proper position on the machine after the spreading hooks are loosened, then operate the machine.
- Adjust the light fixed on the machine to a proper position to illuminate the inside sufficiently.
- When finished, move the up down control valve to the downward direction, let the tire fall gently, then move the up & down control valve to the direction of contraction, loosen the spreading hook and remove it from the tire core, then discharge the tire along the sloping board.

## **Maintenance**

- Add lubrication oil to the oil cup. Always ensure that the oil quantity in the cup is filled to 1/3-2/3 of the total volume. Adjust drip oil speed to allow one drop of oil for every 5 to 6 cycles.
- Clear away the dust and keep the work area clear of debris.
- Place lubricating oil on the piston rod and the various moving parts of the machine regularly. This will reduce friction, extending machine life.

### **ONE YEAR LIMITED WARRANTY**

For a period of one (1) year from your purchase date, distributor will repair or replace (at its option), without charge, your product if it was purchased new and the product has failed due to a defect in material or workmanship which you experienced during normal use of the product. This limited warranty is your exclusive remedy.

To access the benefits of this warranty, contact your distributor for confirmation that this warranty applies. Thereafter, you may be advised to return the product under warranty, freight prepaid, to the distributor service department.

If this product is altered, abused, misused, modified or undergoes service by an unauthorized technician, your warranty will be void. We are not responsible for damage to ornamental designs you place on this distributor product and such ornamentation should not cover any warnings or instructions or they may void the warranty. This warranty does not cover scratches, superficial dents and other abrasions to the paint finish that occur under normal use.

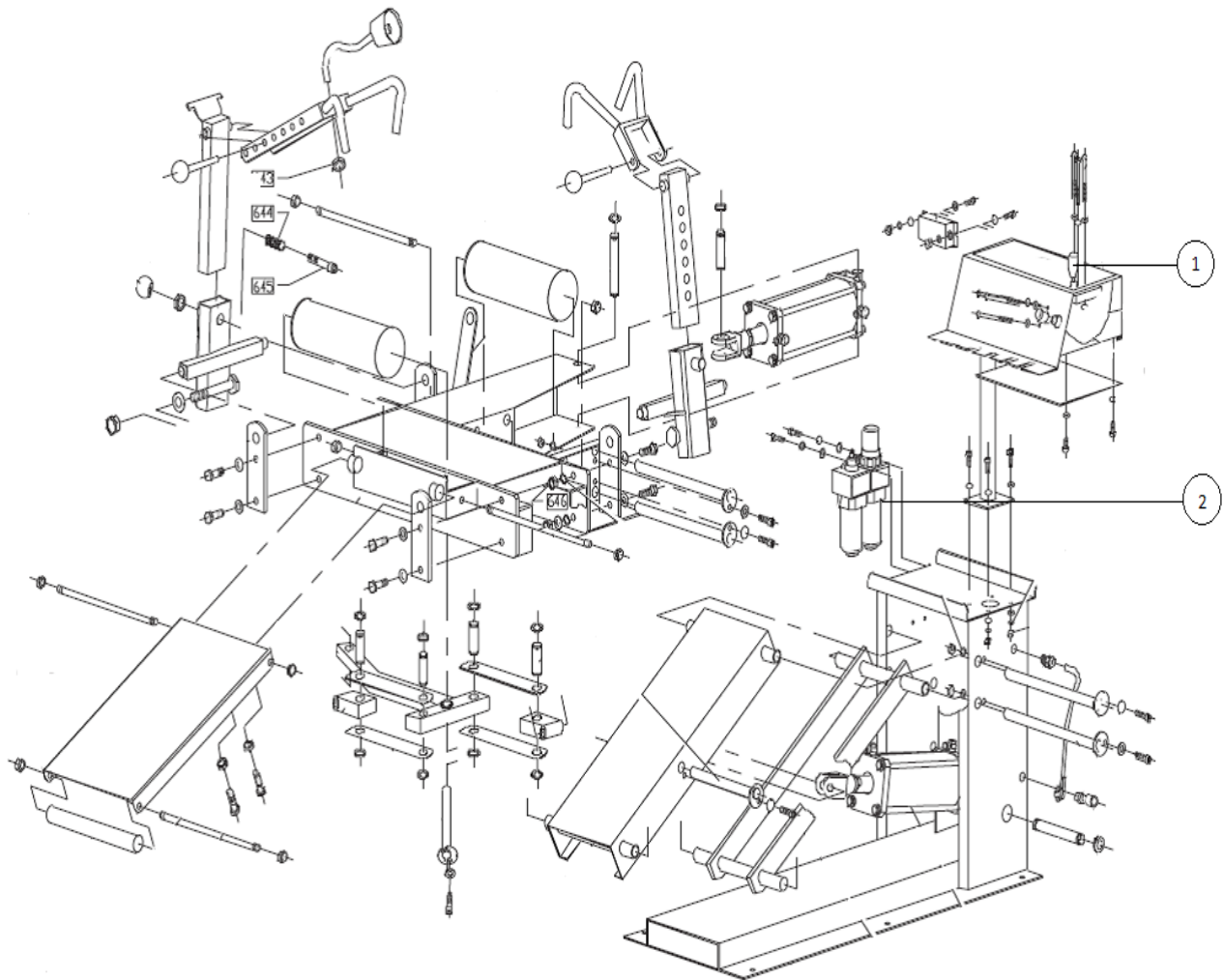
Subject to the law in your state:

(1) Your sole and exclusive remedy is repair or replacement of the defective product as described above.

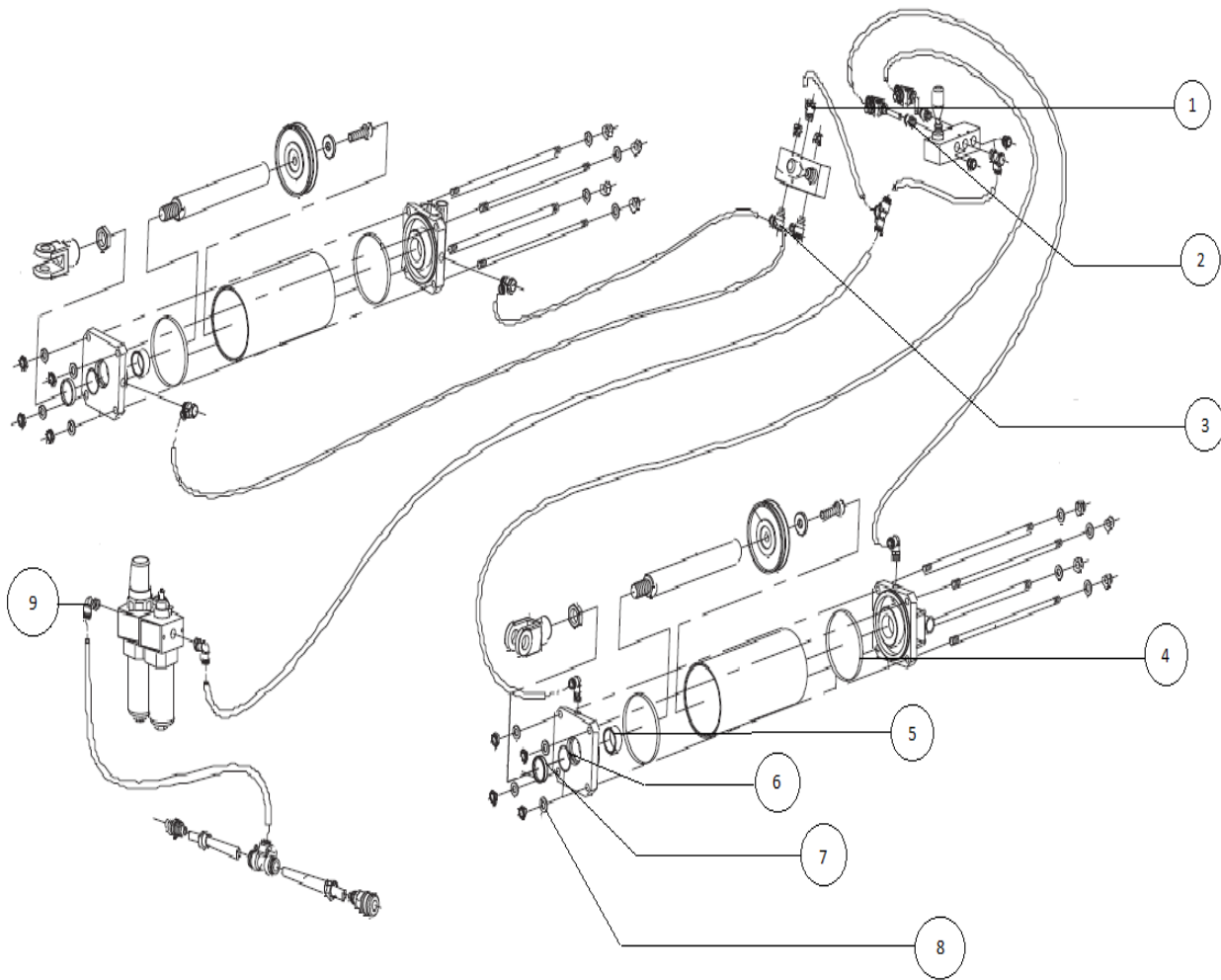
(2) Distributor is not liable for any incidental damages, including but not limited to, lost profits and unforeseeable consequences.

(3) The repair and replacement of this product under the express limited warranty described above is your exclusive remedy and is provided in lieu of all other warranties, express or implied. All other warranties, including implied warranties and warranties of merchantability or fitness for a particular purpose are disclaimed and, if disclaimer is prohibited, these warranties are limited to one year from your date of purchase of this product. Some states' laws do not allow limited durations on certain implied warranties and some states' laws do not allow limitations on incidental or consequential damages. You should consult the law in your state to determine how your rights may vary.

# EXPLODED VIEW & REPLACEABLE PART NUMBERS



NO.	CODE	DESCRIPTION	QUANTITY
1	603-82501	Handle Valve	2
2	603-82502	Air Regulator	1



NO	CODE	DESCRIPTION	QUANTITY
1	603-82507	Middle Union	1
2	603-82509	Speed Adjusting Union	2
3	603-82508	Handle Valve	2
4	603-82510	Rubber O-Ring	1
5	603-82511	Oil-Free Piston	4
6	603-82503	O-Ring	2
7	603-82505	Dustproof Seal	2
8	603-82504	Washer	16
9	603-82506	Right Angle Connector	4