

COATS®

5035 A/E Rim Clamp® Tire Changer

Parts Identification

READ these instructions before placing unit in service KEEP these and other materials delivered with the unit in a binder near the machine for ease of reference by supervisors and operators.

HENNESSY INDUSTRIES, INC.

1601 J. P. Hennessy Drive, LaVergne, TN USA 37086-3565 615/641-7533 800/688-6359

HENNESSY INDUSTRIES INC. Manufacturer of AMMCO®, COATS® and BADA® Automotive Service Equipment and Tools.

Manual Part No.: 8183817 07

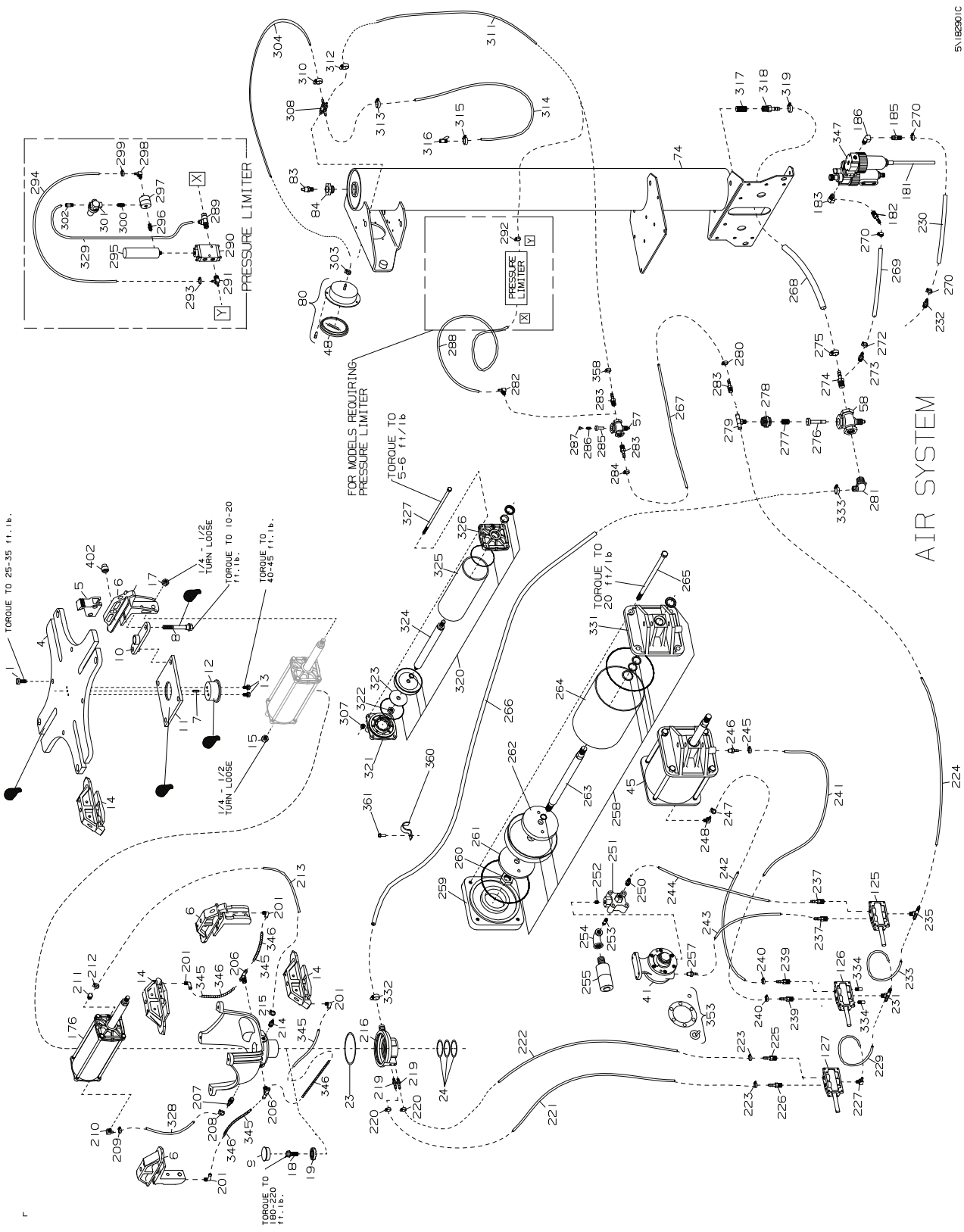
Revision: 03/09

Ref	Part #	Description	Ref	Part #	Description	Ref	Part #	Description
1	8181929	Skt. Hd. Cap Scr., 3/8-16 x 1", Gr.8	44	8181369	1/4-20 Nylon Insert Lock Nut Gr.5	83	8182599	Safety Valve
2	8182952	Table Top Plate	45	8183325	7" Bead Loosener Cylinder Assbly	84	8101312	Reducer Bushing 3/4 x 1/4 NPT
5	8182247	Rim Clamp, Adjustable	46	8182016	3/4"-10 Gr.5 Nylon Insert Lock Nut	85	8100979	Handle Grip, Black Flex 3/4 I.D.
6	8184924	Carrier/Cover - Cylinder End	47	8181912	Clip, Clevis	86	8181082	Lock Handle/Lift Cam W/C
7	8183476	Roll Pin - Ø1/4" x 3/4"	48	8107517	Gauge Lens, Screw On	87	8181095	1-5/8 Snap Ring
8	8182279	Link Bolt - Table Top	49	8181949	Clevis Pin-5/8 x 1-3/8	88	8182371	Wave Washer, 1-5/8 Dia.
9	8182627	Cap Plug - 1-5/8" Dia.	50	8182554	Side Cover Panel	89	8182028	Spring-Vertical Slide
10	8181734	Pivot Link W/C	51	8106301	1/4" H.H. Self Tap Scr., Gr.5	90	8181771	Knob-Vertical Slide
11	8181731	Pivot Plate - Table Top	52	8106259	Lube Bottle (Red)	91	8182029	5/16-1 x 1-1/2 BH Soc Cap Scr, Gr.8
12	8181733	Pivot Block	53	8000491	Lube Applicator	92	8181038	Pivot Pin-Swing Arm
13	8183452	Flange Whiz-lock Scr., 5/16-18 x 5/8"	54	8181933	Pedal Inflation	93	8182577	Swing Arm (Red)
14	8184925	Carrier/Cover - Clamp	55	8102459	3/8" Self Tap Screw Gr.5	94	8181095	1-5/8 Snap Ring
15	8101039	Nut - Lock, 1/2", Gr.5	56	8104673	Bushing (1/4" Valve)	95	8181113	1/2"-13 Jam Nut Gr.5
16	8181634	Cylinder Assembly-Table Top	57	8104600	1/4" Valve Comp.	96	8181113	1/2"-13 Jam Nut Gr.5
17	8101039	Nut - Lock, 1/2", Gr.5	58	8106298	3/4" Valve Ported 1/4"-18 NPT	97	8181788	Lock Plate
18	8181742	16MM x 40mm Hex Head Bolt Gr.10.9	59	8104674	Bushing (3/4" Valve)	98	8181035	Lift Pin-Lock Plate
19	8182979	Washer - Molded, Ø16mm	60	8180103	3/8 x 3-1/4 Clevis Pin	99	8181740	SHCS 1/2-13 x 1-3/4, Gr.5
20	8181990	Spider Assembly	61	8181932	Inflation Brkt.	100	8182767	Vertical Slide Shaft
21	8181658	Pulley-Transmission	62	8107407	Hitch Pin Retainer	101	8182031	Bumper-Rubber
22	8182619	Rotary Coupling Assembly	63	8104613	5/8" Ext. Tooth Lock Washer	102	8183509	Accessory Box Assembly
23	8181713	O-Ring Seal, Large (2-244)	64	8104611	5/8" N.F. Jam Nut Gr.5	103	8182813	Counter Bore Cap Screw 1/4-20 x 3/4
24	8181712	O-Ring Seal, Small (2-142)	65	8104612	3/4" Ext. Tooth Lock Washer	104	8182787	Roller .562 Diameter x .515 LG.
25	8183156	Washer - Ø2" X Ø2 3/4" x .010	66	8104610	3/4" N.F. Jam Nut Gr.5	105	8182373	Warning Decal
26	8110653	3/8-16 x 6" Gr5 Capscrew	67	8182583	Chassis	106	8182185	Tube-Dipstick
27	8301032	3/8 Flat Washer, Zinc Plate	68	8182579	3/4-10 x 5 Hex Hd. Cap Scr, Gr.5	107	8182186	Dipstick-Transmission
28	8110653	3/8-16 x 6" Gr5 Capscrew	69	8182457	Washer, 1 1/2" x .812 x .135	108	8182786	5MM x 25MM Dowel Pin
29	8301032	3/8 Flat Washer, Zinc Plate	70	8182457	Washer, 1 1/2" x .812 x .135	109	8140667	1/4-20 x 1/4 Soc.Hd.Set Scr, Gr.8
30	8182965	Transmission Kit	71	8182016	3/4"-10 Gr.5 Nylon Insert Lock Nut	110	8182027	Washer 7 ga. x .406 ID x 1.28 OD
31	8110653	3/8-16 x 6" Gr5 Hex Hd Cap Screw	72	8106303	3/8" Whiz Lock Nut, Gr.5	111	8106302	3/8" Whiz Lock Screw, Gr.5
32	8181205	Belt	73	8106302	3/8" Whiz Lock Screw, Gr.5	113	8182550	Pivot Pin, B.L. Cylinder Rod
33	8301032	3/8 Flat Washer, Zinc Plate	74	8182500	Tower/Air Receiver (Red)	114	8180230	B.L. Spring
34	8106303	3/8" Whiz Lock Nut Gr5	75	8106303	3/8" Whiz Lock Nut, Gr.5	115	8182581	Bead Loosener Arm
35	8301032	3/8 Flat Washer, Zinc Plate	76	8106302	3/8" Whiz Lock Screw, Gr.5	116	8182579	3/4-10 x 5 Hex Hd. Cap Scr, Gr.5
36	8000516	3/8-16 Hex Lock Nut Gr5	77	8182962	Warning Decal (Standard)	117	8182457	Washer, 3/4"
37	8182571	Motor Pulley - Air Motor	78	8182593	Adjustment Knob Assembly	118	8182558	3/4" Belleville Washer
38	8182784	Motor Mounting Bracket (Red)	79	8107983	Plastic Fastener	119	8182557	BL Washer Spacer
39	8181984	Hx.Hd.Cp.Scr., 1/4-20 x 1", Gr.5	80	8107985	Flanged Air Gauge w/Fasteners	120	8182473	Bead Loosener Shoe
40	8000516	3/8-16 Hex Lock Nut Gr5	81	8181172	3/4 x 7-1/2" Gr5 Hex Hd Cap Scr	121	8107107	Grip-Handle
41	8182572	Air Motor	82	8182457	Washer, 3/4"	122	8182016	3/4"-10 Gr.5 Nylon Insert Lock Nut
42	8106303	3/8" Whiz Lock Nut, Gr.5				123	8181173	Bead Loosener Front Pad
						124	8181065	B.L. Center Pad
						125	8181986	Valve, 4-Way w/Pull Pin
						126	8181986	Valve, 4-Way w/Pull Pin

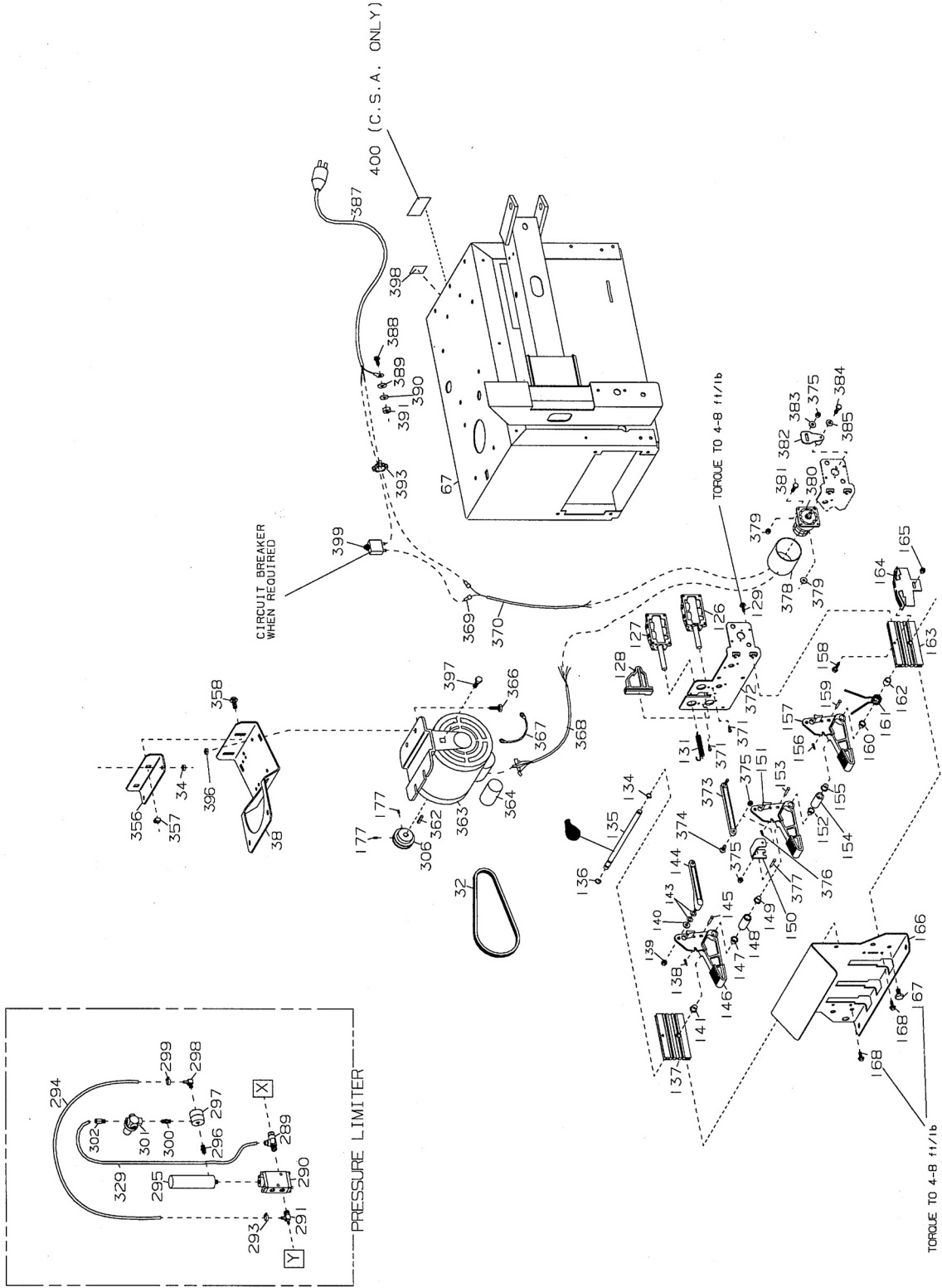
Ref	Part #	Description	Ref	Part #	Description	Ref	Part #	Description
127	8181986	Valve, 4-Way w/Pull Pin	173	8183818	Operating Instructions (Std)	223	8101428	Hose Clamp-1/4 I.D. Hose
128	8181695	Cam Mounting Block	174	8182088	5/16 x 1 Torx Screw, Gr.5	224	8182005	3/8 x 20" Nylon Tube
129	8106301	1/4" H.H. Self Tap Scr., Gr.5	175	8109888	Inflation Warning Decal	225	8000378	1/4" Brass St. Fitting
130	8183031	Bracket-Valve Mounting	176	8182613	Cylinder Assembly-Table Top	226	8000378	1/4" Brass St. Fitting
131	8181708	Extension Spring, Pedal	177	8180217	5/16-18 x 3/8" SHCS Gr5	227	8181998	Male Elbow 1/4 NPT x 3/8 Tube
132	8181989	10-24 x 3/8 Soc Head Cap Scr, Gr.8	179	8181354	Bead Lifting Tool	228	8182339	Shim Kit-Swing Arm
133	8181708	Extension Spring, Pedal	180	8182366	1/4" NPT Brass Close Nipple	229	8182005	3/8 x 20" Nylon Tube
134	8111609	Cotter, Hair Pin	181	8102459	3/8-16 x 3/4 Self Tap Screw Gr5	230	8181147	Hose 3/8 x 17-1/4" Lg.
135	8183398	Pedal Shaft	182	8101898	3/8" Hose Fitting	231	8181988	Male Brch. Tee 1/4 NPT x 3/8 Tube
136	8301121	Washer	183	8000372	1/4" x 90° Street Ell	232	8101898	3/8" Hose Fitting
137	8181918	Bar-Valve Brkt. Spacer	184	8182952	Table Top Plate without Jets	233	8182005	3/8 x 20" Nylon Tube
138	8120469	Hair Pin Cotter	185	8101898	3/8" Hose Fitting	235	8181988	Male Brch. Tee 1/4 NPT x 3/8 Tube
139	8181369	Nut - Lock, Nyl. Ins., 1/4-20, Gr.5	*186	8000372	1/4" x 90° Street Ell	237	8181999	Male Elbow 1/4 NPT x 3/8 Tube
140	8107635	5/16" Flat Washer	*188	8181554	Accessory Tray Kit	239	8000378	1/4" Brass St. Fitting
141	8181948	Bearing-Nyliner, 1/2"	*189	8108028	Tire Spreader	240	8101428	Hose Clamp-1/4 I.D. Hose
*142	8183604	Bootie, Rim Clamp, Pkg of 10	*190	8181329	Spreader Base-Rim Clamp	241	8106289	Ø1/4" x 22" Hose
143	8181981	Wave Washer, 5/16" I.D.	*191	8235208	Motorcycle Clamp (Tall)	242	8106289	Ø1/4" x 22" Hose
144	8181696	Lever-Cam Follower	*192	8181619	Motorcycle Clamp Kit (Tall)	243	8182005	3/8 x 20" Nylon Tube
145	8183399	Clevis Pin 3/16" x 1-1/2"	*193	8235740	ATV Clamp (Tall)	244	8182005	3/8 x 20" Nylon Tube
146	8181675	Pedal, Standard	*194	8181891	ATV Clamp Kit (Tall)	245	8101428	Hose Clamp-1/4 I.D. Hose
147	8181948	Bearing-Nyliner, 1/2"	*195	8435685	Drop Center Aid	246	8000378	1/4" Brass St. Fitting
148	8181911	Spacer-Pedal	*196	8435203	Plastic Clamp Jaw	247	8101428	Hose Clamp-1/4 I.D. Hose
149	8181948	Bearing-Nyliner, 1/2"	197	8109784	Manifold/Gauge Protector	248	8000376	1/4 x 90° Brass Fitting
150	8182221	Hose Clamp, 6"	198	8108968	Air Gauge	250	8181999	Male Elbow 1/4 NPT x 3/8 Tube
151	8181675	Pedal, Standard	*199	8182640	California Gauge Kit	251	8181191	Valve, Quick Exhaust
152	8181948	Bearing-Nyliner, 1/2"	201	8181998	Male Elbow 1/4 NPT x 3/8 Tube	252	8000580	Nipple - Close, 1/4 NPT
154	8182327	Spacer-Pedal	202	8182836	Nylon Tube 3/8 OD x 15.5" Lg	253	8181207	3/8" NPT Close Nipple
155	8181948	Bearing-Nyliner, 1/2"	203	8182894	Tube Protector	254	8181195	1/2" x 3/8" Reducing Elbow
157	8181675	Pedal, Standard	206	8181988	Male Brch. Tee 1/4 NPT x 3/8 Tube	255	8181206	Muffler-1/2" NPT
158	8120321	1/4 x 1-1/4 Hex HD Cap Screw Gr5	209	8101428	Hose Clamp-1/4 I.D. Hose	257	8181999	Male Elbow 1/4 NPT x 3/8 Tube
160	8181948	Bearing-Nyliner, 1/2"	210	8110497	Fitting-90 Deg, Male Elbow	258	8182638	7" Bead Loosener Cylinder Seal Kit
161	8181707	Torsion Spring	211	8104844	Fitting, Barbed 1/4"	259	8183327	7" Bead Loosener Cyl. Bot. Cap
162	8181872	Sleeve-Torsion Spring	212	8101428	Hose Clamp-1/4 I.D. Hose	260	8182016	3/4"-10 Gr.5 Nylon Insert Lock Nut
163	8181918	Bar-Valve Brkt. Spacer	213	8104684	1/4 x 8" Hose	261	8182566	Bead Loosener Cyl. Steel Washer
164	8182670	Spring Stop Bracket	214	8000378	1/4" Brass St. Fitting	262	8182566	Bead Loosener Cyl. Steel Washer
165	8181369	Nut - Lock, Nyl. Ins., 1/4-20, Gr.5	215	8101428	Hose Clamp-1/4 I.D. Hose	263	8182565	Bead Loosener Cylinder Shaft
166	8182586	Foot Pedal Guard (Red)	216	8181349	Rotary Coupling	264	8182568	Bead Loosener Cyl Sleeve Barrel
167	8102459	3/8" Self Tap Screw Gr.5	217	8182250	Adj. Clamp Plunger/Spring Assem.	265	8110890	1/2-13 x 9" Long HHCS Gr5
168	8106301	1/4" H.H. Self Tap Scr., Gr.5	218	8109769	Decal, Release Valve	266	8182600	Ø3/4" X 27" Hose (Black)
169	8182723	#3 Woodruff Key	219	8104844	Fitting, Barbed 1/4"	267	8102048	Hose, 1/4 x 15"
170	8182457	Washer, 3/4"	220	8101428	Hose Clamp-1/4 I.D. Hose	268	8182742	3/4" x 9-1/2" Hose (Black)
171	8182016	3/4"-10 Gr.5 Nylon Insert Lock Nut	221	8106289	Ø1/4" x 22" Hose	269	8182497	Hose 3/8" x 36" Lg.
172	8182788	Mount Demount Head Assembly	222	8106289	Ø1/4" x 22" Hose	270	8101428	Hose Clamp-1/4 I.D. Hose

Ref	Part #	Description	Ref	Part #	Description	Ref	Part #	Description
272	8101428	Hose Clamp-1/4 I.D. Hose	315	8105822	Hose Clamp-9/16 I.D. Hose	366	8120325	5/16-18 x 1 Ser. Wash.Hd.Scr., Gr.5
273	8101898	3/8" Hose Fitting	316	8410419	Air Chuck	367	8180560	Ground Cable
274	8182020	St. Fitting, 3/4" NPT x 1/4" NPT	317	8182464	Strainer Screen	368	8184562	Motor Cable Assembly, 115V 60Hz
275	8101346	3/4" Hose Clamp	318	8104573	Fitting, Straight-3/4"	369	8181511	Motor Cable Assembly, 220V 50Hz
276	8104652	Poppet, 3/4" Valve	319	8101346	3/4" Hose Clamp	370	8143254	Wire Joint
277	8104651	Spring, 3/4" Valve	320	8183811	Seal Kit, T.T. Cylinder	370	8182141	Cord-Entrance to Switch
278	8106350	End Cap, 3/4" Valve	321	8181622	Cap-Cylinder Bottom	371	8181989	10-24 x 3/8 Soc Head Cap Scr, Gr.8
279	8182071	Fitting, Special Male Branch Tee	322	8182719	1/2-13 Locking Jam Nut, Gr.5	372	8183031	Bracket-Valve Mounting
280	8101428	Hose Clamp-1/4 I.D. Hose	323	8181183	5/16-18 Nylon Insert Lock Nut Gr5	373	8181699	Lever Assembly - Switch
281	8107924	3/4 Nylon Elbow	324	8181629	Shaft-Tabletop Cyl.	374	8182743	Shoulder Screw - 5/16
282	8181998	Male Elbow 1/4 NPT x 3/8 Tube	325	8181627	Sleeve-Cylinder	375	8181369	Nut - Lock, Nyl. Ins., 1/4-20, Gr.5
283	8000378	1/4" Brass St. Fitting	326	8181620	Cap-Cylinder Top	376	8182363	Spacer - Sw Pedal Lever-Red
284	8101428	Hose Clamp-1/4 I.D. Hose	327	8181633	Tie Bolt-Tabletop Cylinder	377	8190134	1/4-20 x 3/4 Hex Hd Cap Scr Gr.5
285	8104649	Poppet, 1/4" Valve	328	8103649	Ø1/4 x 12" Hose	378	8181959	Cover-Switch
286	8102468	Poppet Spring, 1/4" Valve	329	8182037	Nylon Tube 1/4 OD x 10" Lg.	379	8182682	10-24 Nylon Insert Lock Nut Gr.5
287	8105671	End Cap, 1/4" Valve	331	8183328	7" Bead Loosener Cylr Top Cap	380	8182957	Switch-Reversing
288	8182005	Nylon Tube 3/8" x 20" Lg.	332	8101346	3/4" Hose Clamp	381	8181983	B Hd Soc Cap Scr 10-24 x 5/8, Gr.8
289	8111255	Spl Tee-1/4 NPT x 3/8 x 1/4 Tube	333	8101346	3/4" Hose Clamp	382	8181728	Lever - Switch Actuator
290	8109466	Valve-Piloted	334	8182734	Muffler	383	8000745	Washer - Flat, Ø1/4"
291	8110325	1/4" NPT Male Run Tee	335	8183770	Filter/Lube Bracket	384	8181982	Hx.Hd.Cp.Scr., 3MM x 12mm, Gr.5
292	8101428	Hose Clamp-1/4 I.D. Hose	336	8106301	1/4" H.H. Self Tap Scr., Gr.5	385	8301072	#6 Internal Tooth Lk Washer
293	8101428	Hose Clamp-1/4 I.D. Hose	343	8182770	Bootie-Duckhead® (Single)	387	8181956	Pwr Cable Assy, 115V w/o breaker
294	8103649	Ø1/4 x 12" Hose	343	8182961	Bootie-Duckhead(Pkg of 2)	387	8182257	Pwr Cable Assy, 115V w/ breaker
295	8110496	Volumn Chamber	343	8182963	Bootie-Mount/Demount Head (Pkg of 12)	387	8182271	Pwr Cable Assy (220V, 50Hz, 1 Ph)
296	8109471	1/8" Brass Hex Nipple	344	8182768	Caution Decal-B.L.	388	8106301	1/4" H.H. Self Tap Scr., Gr.5
297	8109468	Pressure Repeater	347	8181962	Filter/Lubricator	389	8150441	1/4" Star Lock Washer
298	8110497	Fitting-90 Deg. Male Elbow	350	8120408	1/4-20 x 1-3/4 H.H. Cap Scr., Gr.5	390	8301142	Washer, 1/4" Spring Lock
299	8101428	Hose Clamp-1/4 I.D. Hose	351	8143169	1/4-20 Whiz Lock Nut, Gr.5	391	8107440	1/4-20 Hex Nut Gr.5
300	8109472	1/8" Inline Filter	352	8000378	1/4" Brass St. Fitting	392	8181129	Cable Connector Bracket
301	8111083	Regulator	353	8182912	Air Motor Repair Kit	393	906077	Strain Relief, 240V
302	8182035	Male St Fit. 1/8 NPT x 1/4 Tube	354	8182809	Lube Bottle Brkt-Red	394	8120325	Screw-Ser.Wshr.Hd.,5/16-18 x 1"
303	8101428	Hose Clamp-1/4 I.D. Hose	355	8182878	Panel/Side Cover	395	8182178	Nut-Whiz Lock, 5/16-18 Gr5
304	8000481	Hose 1/4" x 6"	356	8182923	Motor Adjustment Bracket	396	8181183	Nut-Nyl. Ins.Lk, 5/16-18 Gr5
305	8183778	Decal - Lubrication Notice	357	8143044	Tinnerman Sq. Captive Nut 3/8-16	397	8120455	10-24 Self Tap Screw, Gr.2
306	8181204	Pulley 5/8" Shaft	358	8106302	3/8" Whiz Lock Screw, Gr.5	398	8182037	Nylon Tube 1/4 OD x 10" Lg.
308	8183502	Manifold Bleed Valve Assembly	360	8104564	Ø3/4" Hose Ring Clip	399	8181587	Circuit Breaker, USA, Can., 15amp
309	8000378	1/4" Brass St. Fitting	361	8106301	1/4" H.H. Self Tap Scr., Gr.5	399	8184963	Circuit Breaker, Export, 8amp
310	8101428	Hose Clamp-1/4 I.D. Hose	362	8180558	Key-Motor Pulley	400	8140963	Decal - CSA Caution
311	8182090	Hose 3/4" x 61" Lg.	363	8185483	Electric Motor - 115v 60Hz	401	8182960	Mount/Demount Head (PLASTIC)
312	8101428	Hose Clamp-1/4 I.D. Hose	364	8182783	Electric Motor - 220v 50Hz	402	8182250	Adj. Clamp Plunger/Spring Assy.
313	8101428	Hose Clamp-1/4 I.D. Hose			Motor Capacitor Only			
314	8182090	Hose 3/4" x 61" Lg.						

*Indicates Accessory Item



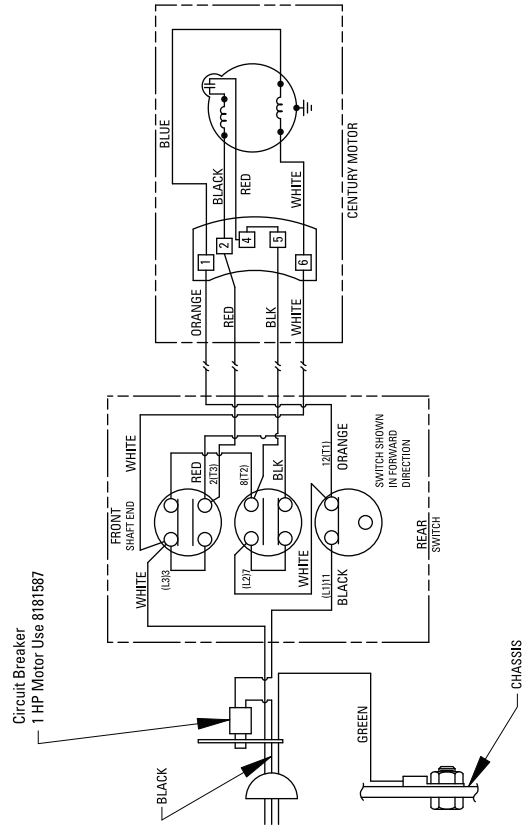
5N182801C



ELECTRIC MOTOR MODELS

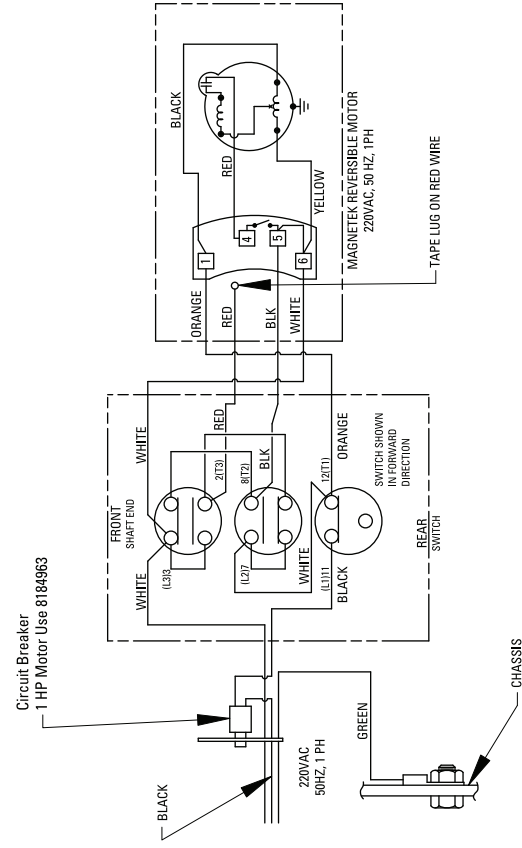
Wiring Diagrams

Domestic & C.S.A.



To reverse rotation, interchange red and black wires at motor.

Export 220VAC



To reverse rotation, interchange red and black wires at motor.

Rim Clamp Tire Changer

All-Air Unit Compressed Air Requirements

COATS rim clamp tire changers that are powered entirely by air (no electric motor) require a single compressed air power source. Refer to the table below for exact specifications.

<u>Tire Changer Model</u>	<u>Compressor Size</u>	<u>Capable of</u>
5035A	5 HP	5 SCFM at 150 PSI

Oiler and Water Separator Maintenance

The oiler and water separator (on units so equipped) require weekly service. Oil and water levels (indicated on the level gauge on the side of each bowl) should be checked regularly

1. Drain the water from the separator by unscrewing the petcock on the bottom of the bowl. Allow water to drain and tighten petcock securely by hand.
2. Add oil to the oiler if the fluid level is more than 1/4" from the top of the gauge. Remove the filler plug in the top of the oiler, and add SAE 10W non-detergent oil or an air tool oil to bring the level up to 1/4" from the top of the gauge. Replace the filler plug and clean up any spilled oil.
3. Adjust the oil flow by pulling the flow adjustment knob up and turning it to increase or decrease the flow. Push the Knob down to lock. Watch the formation of oil drops in the see-through oil chamber. Continually cycle the bead loosener through full strokes and count the drops during the cycles. The delivery of oil to the air line should be about 1 drop per 10 cylinder cycles. Adjust the flow as required.

Alternate Adjustment Procedure: Turn the screw fully clockwise to stop the flow, then turn it back counterclockwise 1/4 turn.

Transmission Lubrication

Check the fluid level in the tabletop transmission with the oil check dipstick. If fluid shows on the dipstick, it is properly filled. If no fluid is present on the dipstick, add a high quality SAE 80/90 gear lubricant. Add lubricant and check the level. Stop adding lubricant when it shows on the dipstick.

Air Gauge Check and Recalibration

1. Inflate a standard 15" passenger car tire/wheel assembly to 32 PSI. Use a high quality stick-type pressure gauge to verify the pressure. Attach the tire changer's inflation hose to the valve stem and check the pressure reading on the air gauge. If it does not read 32 PSI, recalibrate the gauge.
2. Remove the screw-on lens. Loosen the 2 screws on the face of the gauge. Loosen them just enough so that the gauge face moves. Do not remove the screws.
3. Rotate the gauge face until the 32 PSI mark is aligned with the gauge needle. Tighten the 2 screws and replace the lens.

Danger, Warning, Caution, and Instructional Decals

Always make the cleaning of these important decals a part of your regular maintenance routine. If they are damaged or illegible, replace them immediately. Your safety, and the safety of others is involved!