



**MODEL L/R/EF  
Sectional  
Tire Spreader**

Installation, Operation  
& Repair Parts  
Information



Branick Industries, Inc. • 4245 Main Avenue • P.O. Box 1937 • Fargo, North Dakota 58103

**TABLE OF CONTENTS**

---

SAFETY INSTRUCTIONS	1
DEFINITIONS	1
INSTALLATION INSTRUCTIONS	2
OPERATING INSTRUCTIONS	2, 3
MAINTENANCE	3
REPAIR PARTS	4, 5, 6
REPAIR PARTS LIST	7,8
WARRANTY	11

**SAFETY INSTRUCTIONS**

---

- NEVER allow unauthorized personnel to operate this product.
- NEVER use this product for anything other than its intended use.
- THOROUGHLY train new employees in the proper use and care of this product.
- PROHIBIT unauthorized personnel from being in shop area while this product is in use.

**DEFINITIONS**

---

- **CAUTION:** Indicates a potentially hazardous situation, which if not avoided, may result in damage to property or minor personal injury.
- **HAZARD:** A source of potential injury to a person.
- **MAINTENANCE:** Those actions that preserve the correct and proper conditions under which the machine shall be used. This may include adjustment, replacement of wear items, lubrication and cleaning, but not modifications or repair of damage.
- **MAY:** This word is understood to be permissive.
- **MUST:** This word is understood to be mandatory.
- **OPERATION:** The correct and proper use of the machine as described in this manual.
- **SAFETY ALERT SYMBOL:** A symbol that indicates a potential personal safety hazard. It is composed of an equilateral triangle surrounding an exclamation point.
- **SHALL:** This word is understood to be mandatory.
- **SHOULD:** This word is understood to be advisory.
- **WARNING:** Indicates a potentially hazardous situation, which if not avoided, may result in death or serious personal injury.

## CAUTION

- ◆ Before using this product, read and fully understand the operating instructions and all decals on the product. This is necessary to prevent injury to the operator and damage to the product.
- ◆ This product is intended to be used to spread tire casings for inspection and/or repair only.
- ◆ Keep fingers and hands clear of all hooks and mechanisms during operation.
- ◆ Do not use this product if it is visibly worn, distorted or damaged.
- ◆ Always wear appropriate eye protection.

## WARNING

- ◆ Keep feet clear of the tire lift when raising and lowering tire.
- ◆ All personnel must be clear of the spread arms during operation.

### ***INSTALLATION***

---

- 1) Unpack and remove unit from shipping carton and pallet.
- 2) Position the Model L/R/EF on a solid level floor leaving a minimum of 12 inches of clearance from rear and 24 inches of clearance from sides. The L/R/EF should be bolted down using the four holes in bottom of frame.
- 3) Install a 1/4 NPT quick coupler nipple (not provided) into the air filter (Item 39) located on mounted foot pedal.
- 4) Connect the shop air line to the quick coupler installed from previous step.
- 5) Connect the light to any convenient 115V power source.

### ***OPERATION***

---

- 1) Pull the bead hooks up and away from the center of the machine.
- 2) With the tire lift on the floor, roll the tire onto the lift cradle. Steady the tire on the lift as the foot valve is actuated and raise the tire all the way up. The lift will stop when it reaches the full up position.

- 3) Rotate the lift cradle in front of the tread roller and roll the tire onto the machine. Release the foot valve lever and it will return to natural position.
- 4) Place the bead hooks between the tire beads. The vertical height of the bead hooks are fully adjustable and friction stops maintain the height.
- 5) Spread the tire as required with the foot valve. The light can be positioned to view any portion of the tire.
- 6) To rotate the tire while on the spreader, release the air pressure from the spread cylinder and allow the spread hooks to close. Rotate the tire to desired position and again spread to the desired width. Repeat this operation until the tire is inspected.
- 7) To remove the tire from the machine, release the air pressure from the spread cylinder. As the bead hooks disengage, swing them up and out of the tire. Move the light fixture out of the tire.
- 8) With the lift cradle in the up position and next to the tread roller, roll the tire onto the lift cradle. Rotate the cradle away from the machine and release the lift foot valve lever.
- 9) When the lift returns to the floor, roll the tire off the cradle.

## **MAINTENANCE**

---

### **CAUTION**

**Before servicing machine disconnect air and electric.**

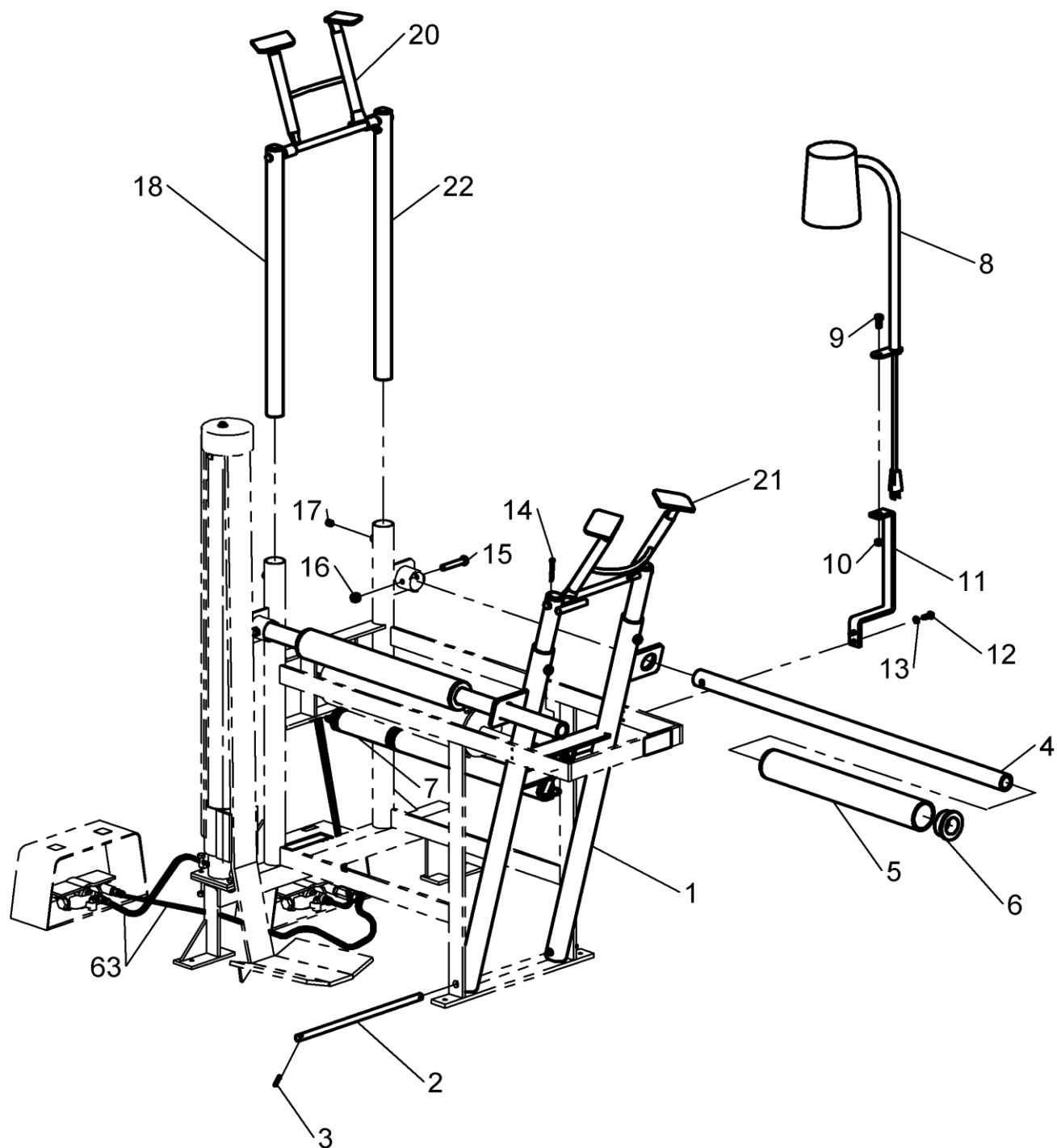
**MONTHLY** – Put a few ounces of 10 or 20 weight oil in all cylinders.

Lubricate all moving parts (bolts, hinges, rollers, etc.) with a lubricating oil.

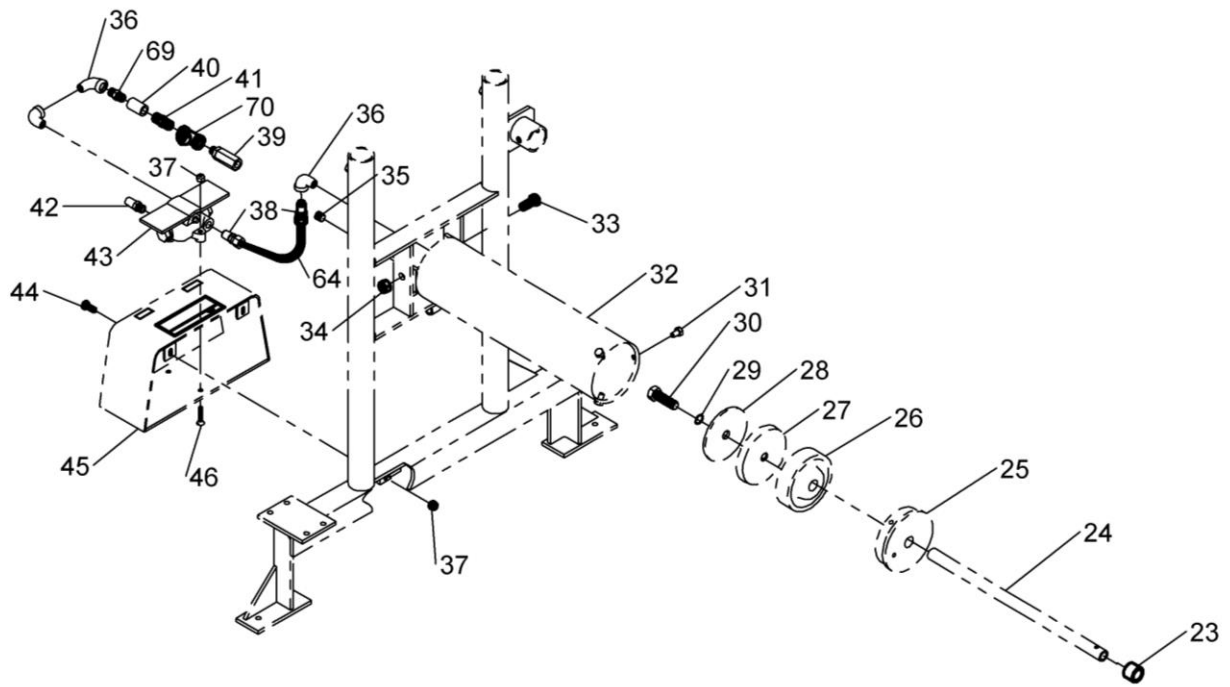
Pull the cotter pin which attaches the piston out of its socket, rotate the rod a half turn and replace the cotter pin.

**BI-YEARLY** – Grease the zerk fitting found on lift carriage

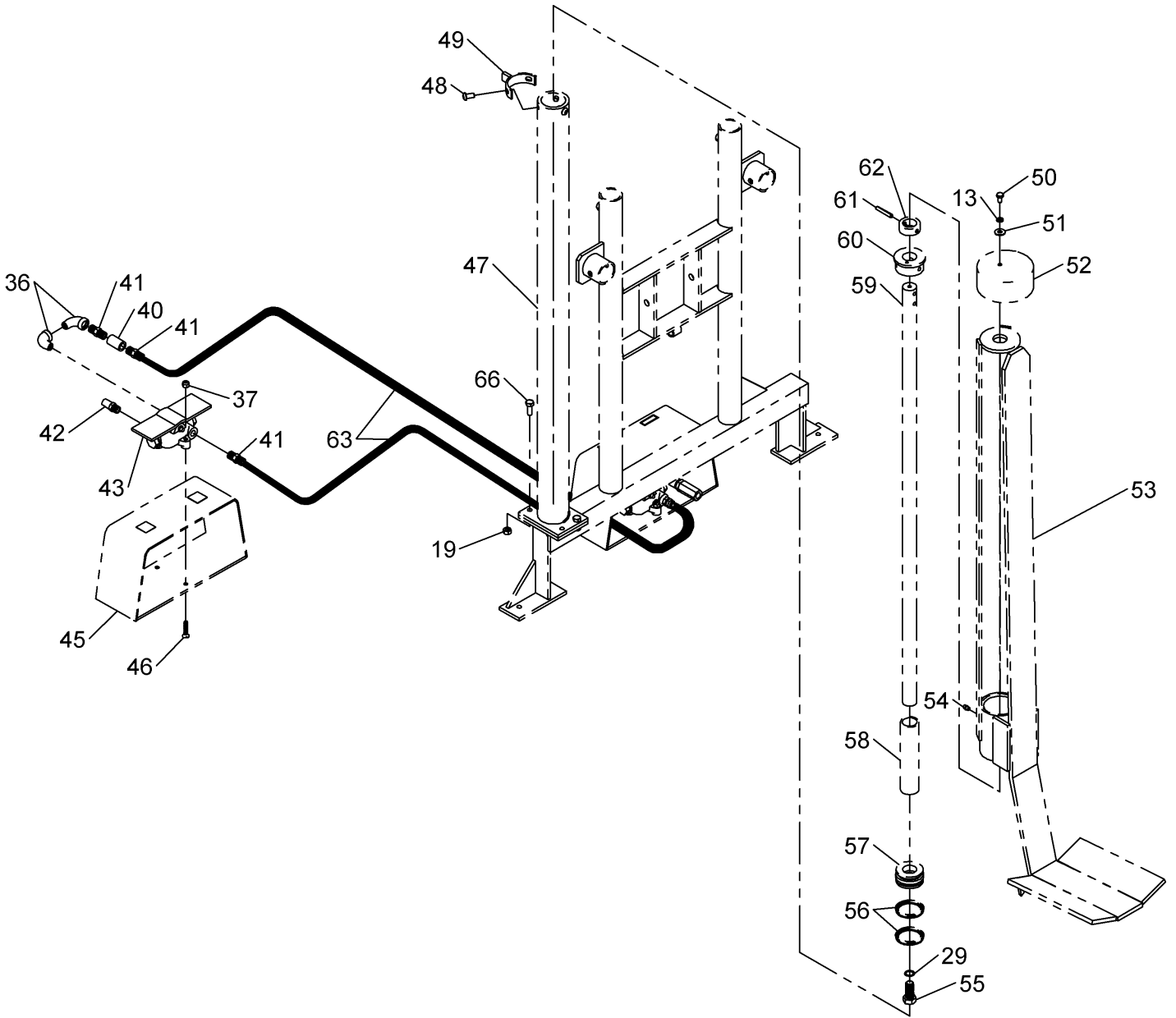
# REPAIR PARTS



**UNIT ASSEMBLY**



**SPREAD CYLINDER PNEUMATICS**



**LIFT CYLINDER PNEUMATICS**

**REPAIR PARTS LIST**

<b>ITEM</b>	<b>QTY</b>	<b>PART NO.</b>	<b>DESCRIPTION</b>
1	1	900-087	FRAME
2	1	104-030	PIVOT SHAFT
3	2	061-178	SPRING PIN
4	2	104-032	SPRING FRAME SHAFT
5	2	281-043	ROLLER
6	4	107-087	BEARING
7	1	110-004	TENSION SPRING
8	1	40-0090	LED LAMP
9	1	028-012	5/16-18" X 3/4" HHC SCREW
10	1	055-145	5/16-18" NYLOCK NUT
11	1	111-524	BRACKET
12	2	028-010	1/4-20" X 3/4" HHC SCREW
13	3	108-008	1/4" INTERNAL TOOTH WASHER
14	1	061-013	COTTER PIN
15	2	028-033	3/8-16 x 2/1/4 HHC SCREW
16	2	055-154	3/8-16 NYLOCK NUT
17	4	028-207	NYLON TIP SET SCREW
18	2	950-475	HOOK POST ASSEMBLY
19	4	055-023	5/16-18 TORQUE LOCK NUT
20	1	950-424	FRONT HOOK ASSEMBLY
21	1	950-425	REAR HOOK ASSEMBLY
22	2	950-427	HOOK ARM
23	1	268-565	SPACER TUBE
24	1	149-090	PISTON ROD <sup>‡</sup>
25	1	098-037	CYLINDER HEAD <sup>‡</sup>
26	1	051-297	PISTON <sup>‡</sup>
27	1	041-295	PISTON CUP <sup>‡</sup>
28	1	101-296	CUP RETAINER <sup>‡</sup>
29	2	167-240	14MM GASKET <sup>‡‡</sup>
30	1	028-013	9/16-12 X 1/3/4 HHC SCREW <sup>‡</sup>
31	3	028-280	5/16-18 X 1/2 HHC SCREW <sup>‡</sup>
32	1	950-426	CYLINDER WELDMENT
33	2	028-054	7/16-14 X 1 HHC SCREW
34	2	055-021	7/16-14 BI-WAY LOCK NUT
35	1	096-004	1/4 NPT PLUG <sup>‡</sup>
36	5	096-038	1/4 NPT STREET ELBOW <sup>‡</sup>
37	6	055-160	NYLON HEX LOCK NUT
38	3	096-163	1/4 NPT X 3/8 CONNECTOR FITTING
39	1	932-001	IN-LINE FILTER
40	2	096-107	PIPE COUPLING FITTING
41	4	096-162	1/4 NPT NIPPLE FITTING



ITEM	QTY	PART NO.	DESCRIPTION
42	2	885-035	1/4 NPT MUFFLER
43	2	190-277	3 WAY TREADLE VALVE
44	2	028-010	1/4-20 X 3/4 HHC SCREW
45	2	835-022	FOOT PEDAL GUARD
46	4	028-390	1/4 X 1/1/4 FHM SCREW
47	1	950-329	CYLINDER WELDMENT <sup>†</sup>
48	3	50-0126	5/16-18 X 5/8 BTN HD SCREW <sup>†</sup>
49	1	822-004	LIFT CYLINDER COLLAR
50	1	028-132	1/4-20 X 1/2 HHC SCREW
51	1	108-013	WASHER
52	1	098-091	VINYL CAP PROCTECTOR
53	1	826-006	CRADLE ASSEMBLY
54	1	096-008	ZERK FITTING
55	1	028-239	9/16-12 X 1/1/4 HHC SCREW <sup>†</sup>
56	2	044-006	2" PISTON RING <sup>†</sup>
57	1	051-014	2" LIFT PISTON <sup>†</sup>
58	1	446-074	CYLINDER SLEEVE <sup>†</sup>
59	1	149-216	PISTON ROD <sup>†</sup>
60	1	098-026	CYLINDER CAP <sup>†</sup>
61	1	061-050	SPRING PIN <sup>†</sup>
62	1	489-030	PISTON ROD COLLAR <sup>†</sup>
63	2	940-003	1/4 X 42 AIR HOSE ASSEMBLY
64	23"	D20-006	3/8 OD BLACK TUBE
65		-	
66	4	028-060	5/16-18" X 7/8" HHC SCREW
67	1	928-015	LIFT CYLINDER ASSEMBLY*
68	1	900-086	SPREAD CYLINDER ASSEMBLY*
69	1	096-162	1/4 NPT RESTRICTED NIPPLE FITTING
70	1	096-249	1/4 NPT TEE

\* DENOTES ITEMS NOT SHOWN

† INCLUDED IN PART NUMBER 928-015

‡ INCLUDED IN PART NUMBER 900-086

**Notes:**

**Notes:**

## COMMERCIAL WARRANTY

This product is warranted by BRANICK INDUSTRIES, INC. to the original user-owner against defective materials or workmanship for a period of one year from the date of shipment. During the warranty period, at the discretion of Branick management, if the product is found to be defective, it will be repaired or replaced without charge. For service, contact Branick (800-437-4394) to obtain an RMA. Any product shipped to Branick must have an RMA and proof of original shipment date. The repaired or replacement product will be returned with transportation charges prepaid by Branick.

This warranty does not cover defects in the product caused by ordinary wear and tear, abuse, misuse, overloading, accident (including shipping damage), improper maintenance, alteration, or any other cause not the result of defective materials or workmanship.

REPAIR OR REPLACEMENT IS THE EXCLUSIVE REMEDY FOR DEFECTIVE PRODUCT UNDER THIS WARRANTY. THIS WARRANTY IS EXPRESSLY IN LIEU OF ALL OTHER WARRANTIES, INCLUDING ANY IMPLIED WARRANTY OF MERCHANT ABILITY OR ANY IMPLIED WARRANTY OF FITNESS FOR A PARTICULAR PURPOSE OF THIS PRODUCT. BRANICK INDUSTRIES, INC. SHALL NOT BE LIABLE FOR ANY CONSEQUENTIAL OR INCIDENTAL DAMAGES.

BRANICK INDUSTRIES, INC. reserves the right to make changes in the design or construction of our products without obligation to incorporate such changes in products already sold and without notice.

Service parts and regular repair service are available from authorized distributors of Branick products, or from:

BRANICK INDUSTRIES, INC.  
4245 Main Ave.  
 Fargo, North Dakota 58103  
Toll Free: 800-437-4394



[www.branick.com](http://www.branick.com)