



PARTS LIST FOR

**TWO-POST, FULL HYDRAULIC, FIXED
PISTON, AXLE ENGAGING LIFT**

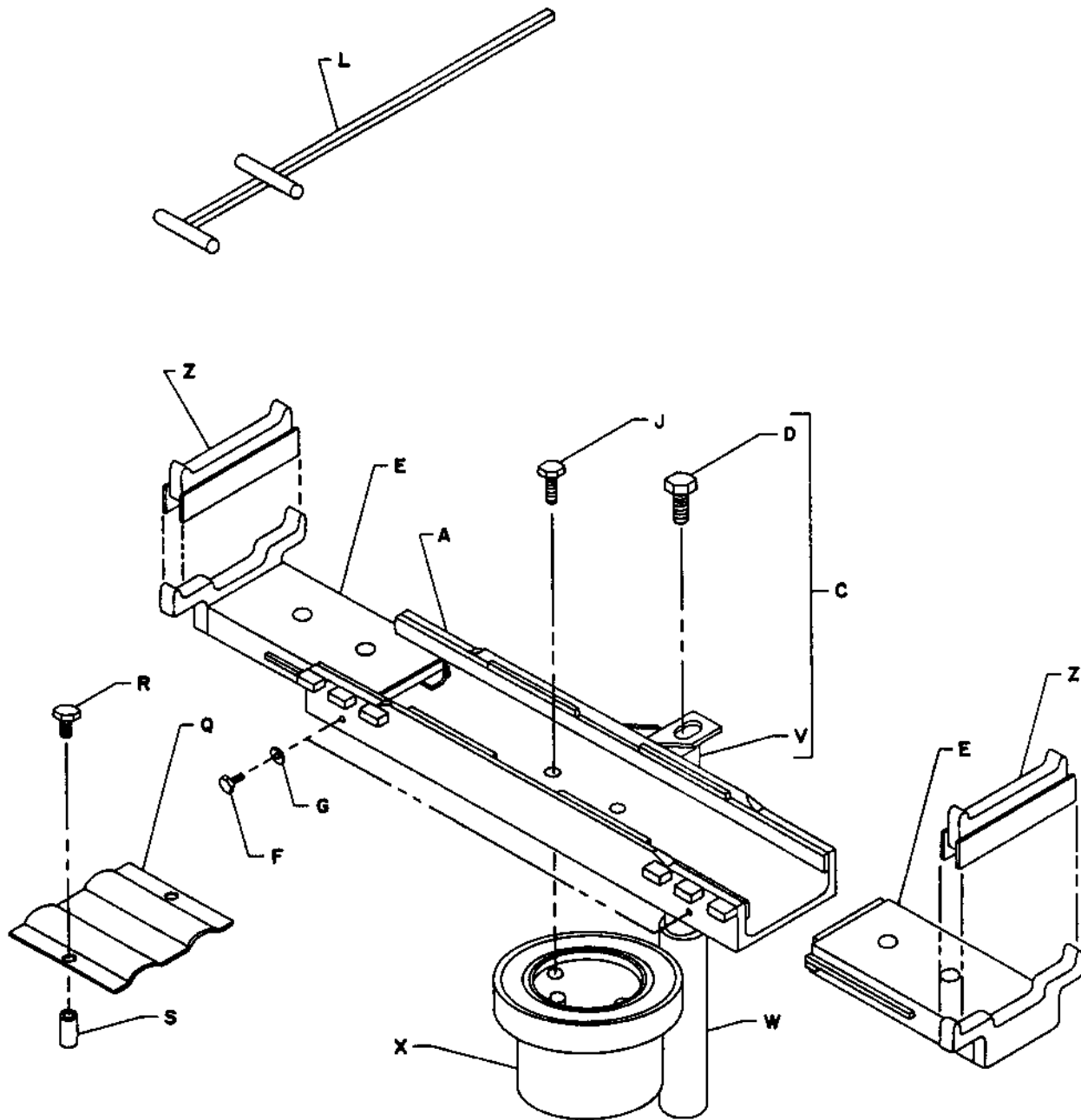
10,000 LBS. TOTAL CAPACITY

5,000 LBS. CAPACITY PER PISTON

A-12J3A SERIES

A-12J3A.max

FRONT SUPERSTRUCTURE

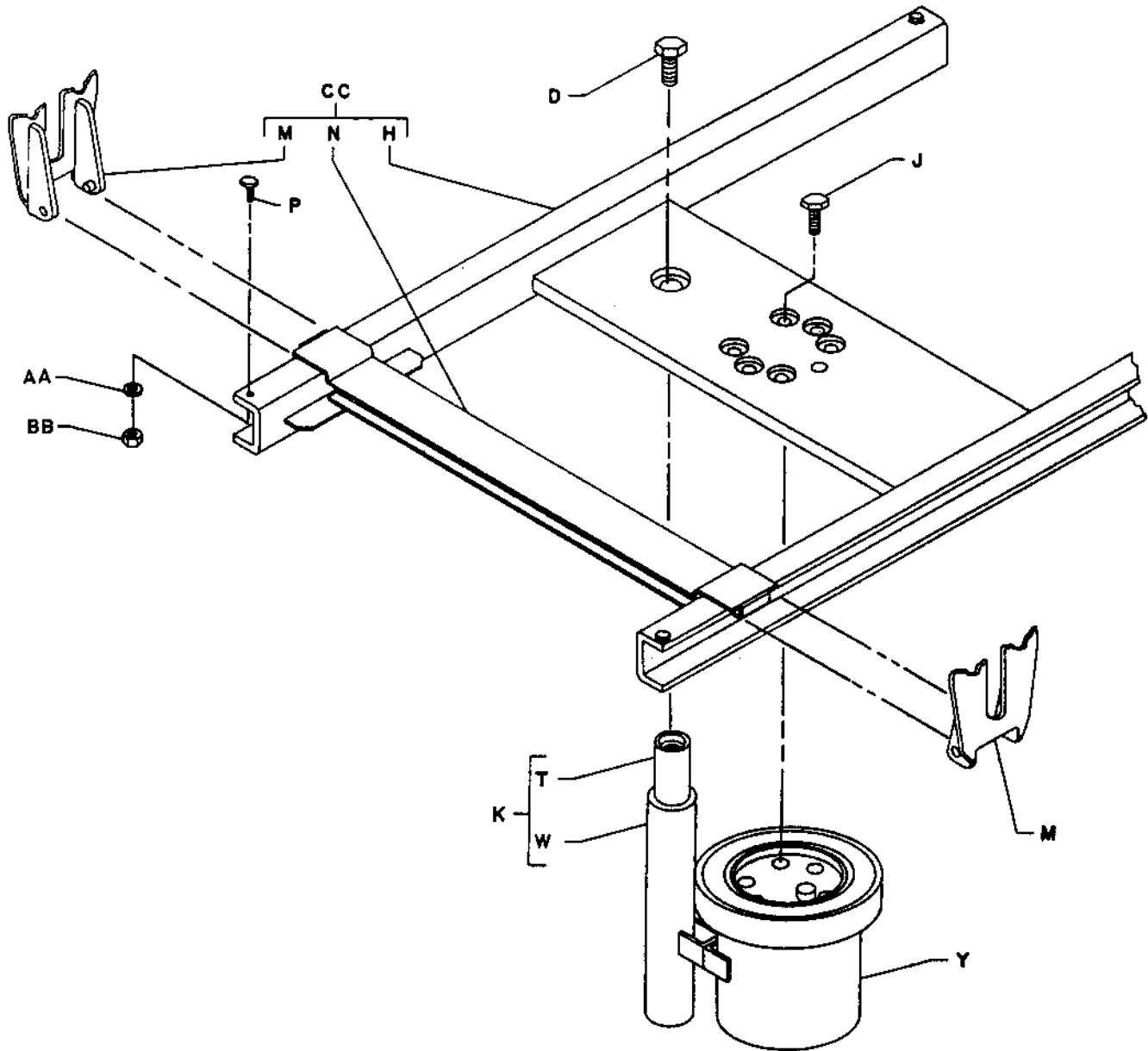


T13965

Code No.	No. Req.	Symbol No.	Description	Code No.	No. Req.	Symbol No.	Description
A	1	T13930-03	Forward Pickup Base	J	10	Q10412-03	Hex Hd. Bolt 3/4" -10 x 2-3/4"
C	1	N20268-09	Automatic Lock Assy. (Includes D, V and W)	K	1	N20268-08	Automatic Lock Assy. (Includes D, T and W)
D	2	K01914-50	Hex Hd. Bolt 1" -8 x 2-1/2"	L	1	N20372	Slide Handle Assy.
E	2	R13418	Forward Pickup Slide	M	2	R14561	Rear Axis Support
F	2	K01802	Hex Hd. Bolt 3/8" -16 x 1"	N	1	T11999	Slide Assy.
G	2	K50775	Lockwasher 3/8"	P	4	K01909	Hex Hd. Bolt 1/2" -13 x 1"
H	1	R18214-G1	Rear Superstructure	Q	1	T07915	Wheel Stop

IMPORTANT: Specify Model and Serial Number of Litt. Also Symbol Number and Name of Part.

REAR SUPERSTRUCTURE



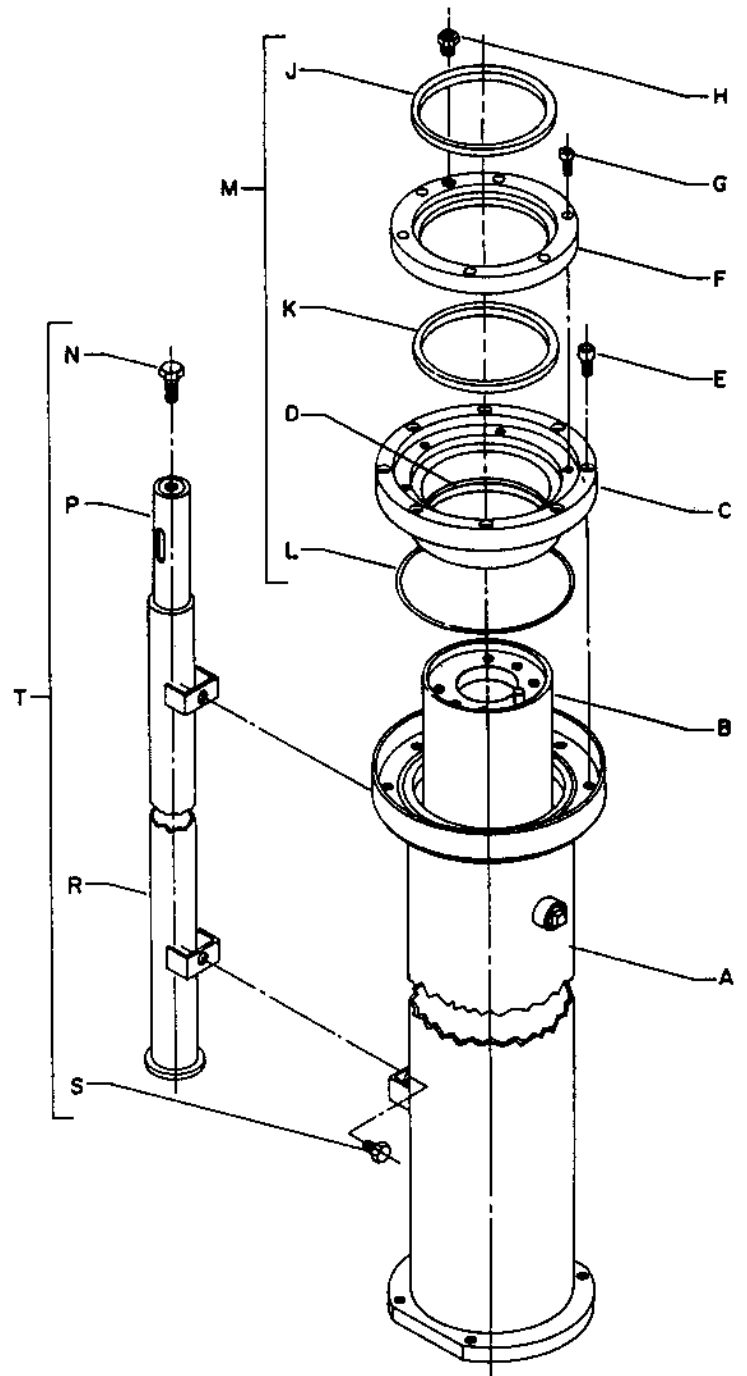
T13965

Code No.	No. Req.	Symbol No.	Description	Code No.	No. Req.	Symbol No.	Description
R	2	K03782	Hex Hd. Bolt 5/16" -18 x 1-3/4"	Y	1	T13821-02	Plunger & Cylinder Assembly (8-1/2") (See Page 9)
S	2	K79695	Expansion Shield	Z	2	R13424	Height Adapter
T	1	R13470-01	Telescoping Post & Latch Assembly	AA	4	K02455	Lockwasher 1/2"
V	1	R13470-06	Telescoping Post & Latch Assembly	BB	4	K01945	Hex Nut 1/2" -13
W	2	R16245-01	Stationary Tube Assembly	CC	1	R18215-G1	Rear Superstructure Assy. (Includes H, M and N)
X	1	T13921-01	Plunger & Cylinder Assembly (8-1/2") (See Page 9)				

IMPORTANT: Specify Model and Serial Number of Lift. Also Symbol Number and Name of Part.

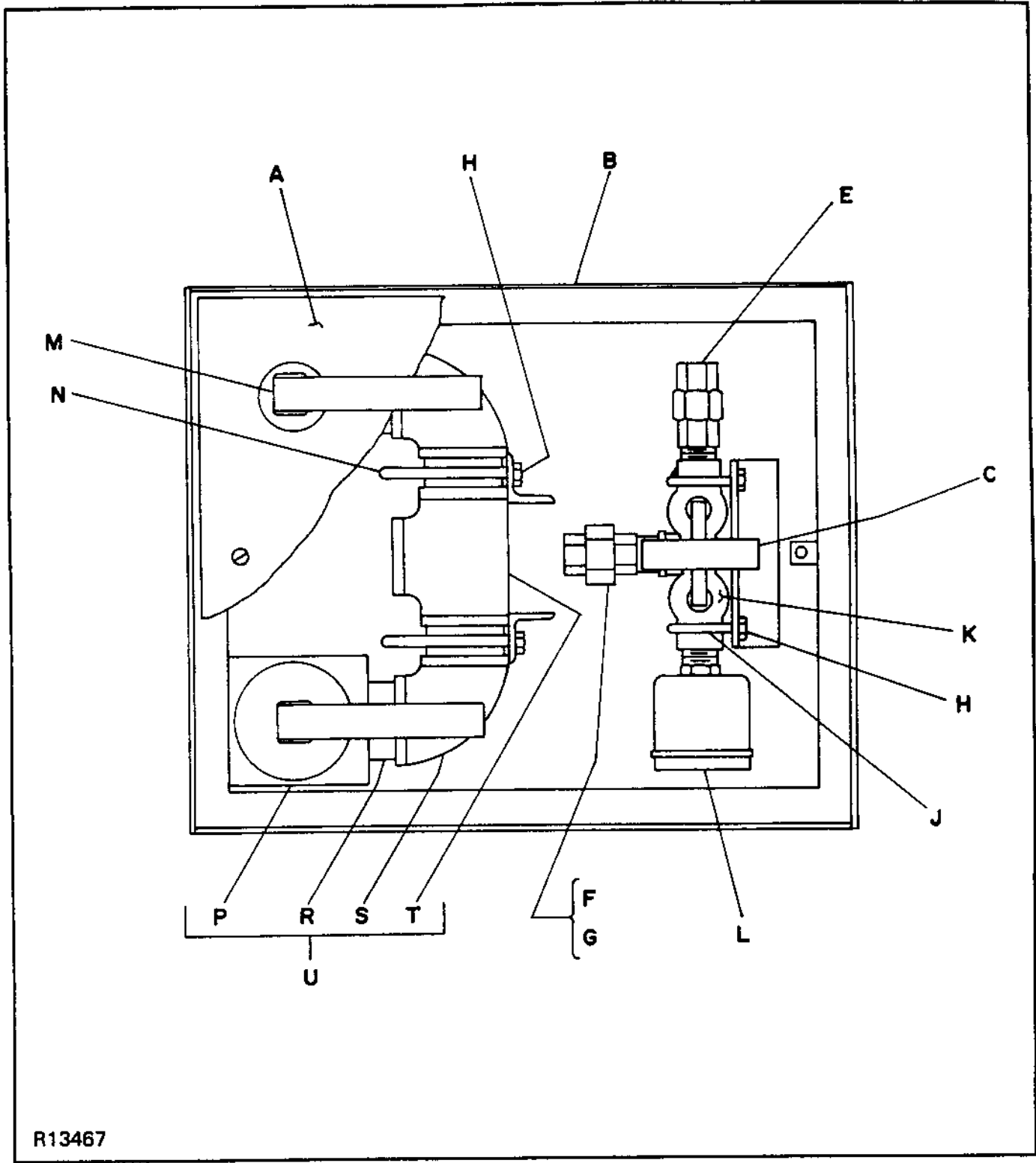
PLUNGER AND CYLINDER ASSEMBLY (8-1/2" DIA.)

Code No.	No. Req.	Symbol No.	Description
	1	T13921-01	Plunger & Cylinder Assy. (Front)
	1	T13921-02	Plunger & Cylinder Assy. (Rear)
A	1	T13920-G1	Cylinder Assembly (Front)
A	1	T13920-G2	Cylinder Assembly (Rear)
B	1	T13912-G1	Plunger Assembly (Front)
B	1	T13912-G5	Plunger Assembly (Rear)
C	2	T13911-02	Upper Bearing
D	2	K93210-02	Felt Wiper
E	16	Q10034-82	Soc. Hd. Bolt 1/2" -13 x 2"
F	2	T13915-01	Wiper Retainer
G	12	Q10034-28	Soc. Hd. Bolt 3/8" -16 x 3/4"
H	2	N21812-G1	Air Vent
J	2	K93211	Wiper
K	2	K93228	Seal
L	2	Q10068-30	O-Ring
M	2	K34152	Seal Kit (Includes D, J, K & L)
N	2	K01914-50	Hex Hd. Bolt 1" -8 x 2-1/2"
P	1	R13470-06	Telescoping Post & Latch Assy. (Front)
P	1	R13470-01	Telescoping Post & Latch Assy. (Rear)
R	2	R16245-01	Stationary Tube Assy. (Front & Rear)
S	4	K01901	Hex Hd. Bolt 3/8" -16 x 3/4"
T	1	N20268-09	Automatic Lock Assy. (Front)
T	1	N20268-08	Automatic Lock Assy. (Rear)
			(Includes N, P, R & S)



*WHEN ORDERING PLUNGER ASSY.
SPECIFY SYMBOL NO. AND CODE
LETTER
STAMPED ON TOP OF PLUNGER.

CONTROL BOX ASSEMBLY T09396 (OPTIONAL)



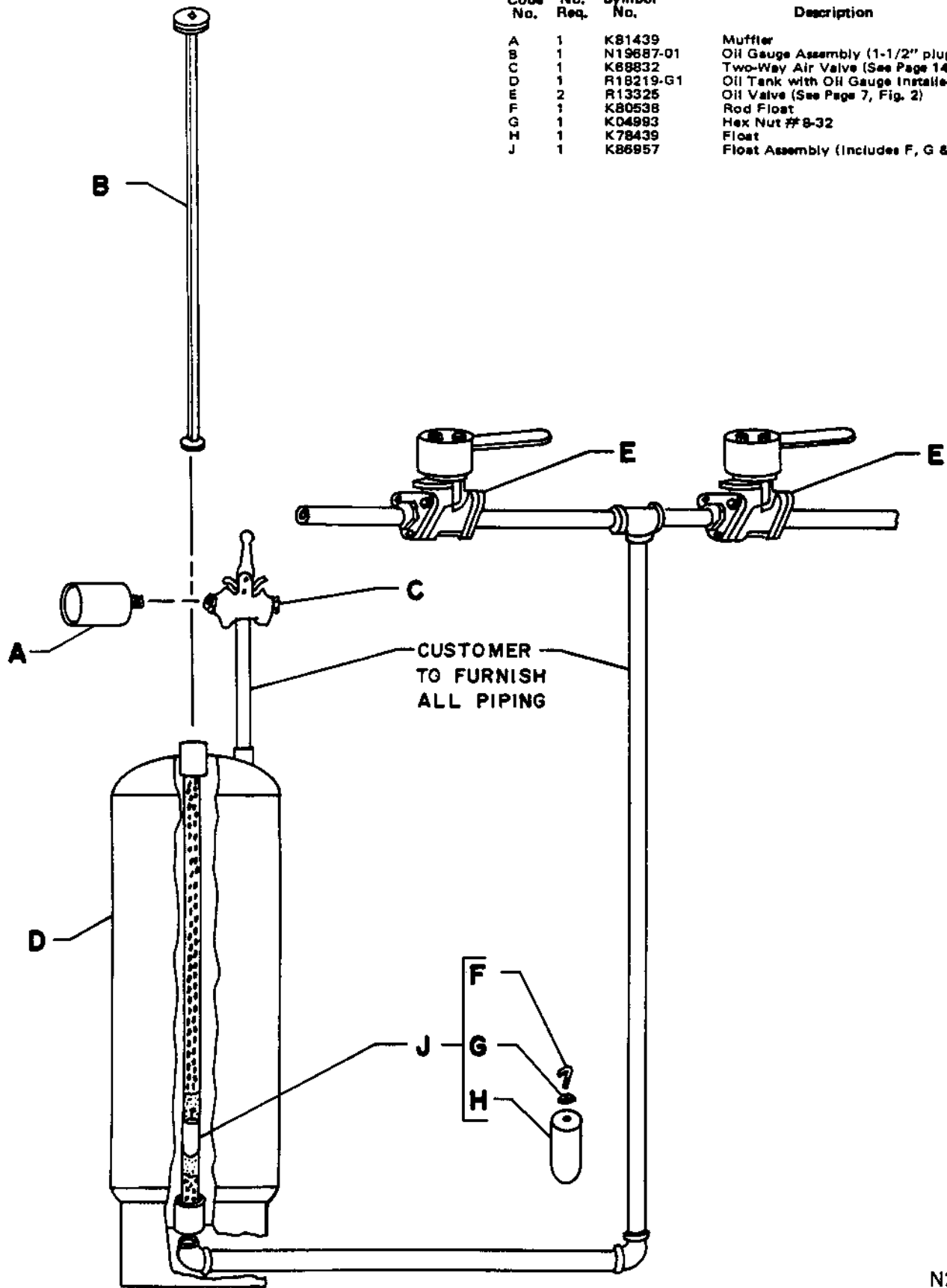
Code No.	No. Req.	Symbol No.	Description
A	1	R13352	Cover
B	1	T09397	Control Box
C	1	N19184	Air Control Handle Extension
E	2	K62635	Male-Female Union 1/2"
F	1	K44745	Nipple 1/2" x 1-1/2"
G	1	K07801	Elbow 1/2" x 90°
H	8	K01841	Hex Nut 1/4" -20
J	2	K67996-02	U-Bolt
K	1	K88963-03	Air Valve (See Page 14, Fig. 1)

Code No.	No. Req.	Symbol No.	Description
L	1	K81439	Muffler
M	2	N19602	Oil Control Handle Extension
N	2	K13758	U-Bolt
P	2	R14467	Oil Valve (See Page 13, Fig. 2)
R	4	R11494-51	Nipple 1-1/4" x 1-5/8"
S	2	K47803	Elbow 1-1/4" x 90°
T	1	K02308A01	Tee STD 1-1/4"
U	1	T09398	Oil Valve & Tee Assembly (Includes P, R, S & T)

IMPORTANT: Specify Model and Serial Number of Lift. Also Symbol Number and Name of Part.

OIL TANK, GAUGE, VALVES, ETC.

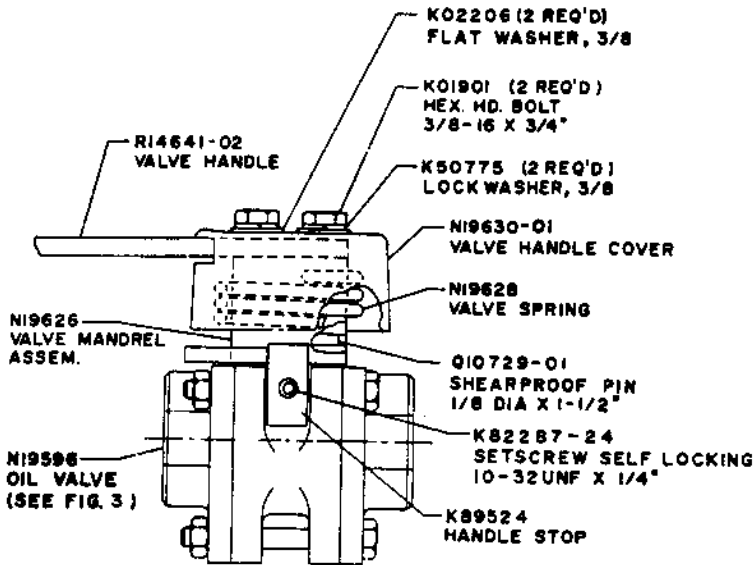
Code No.	No. Req.	Symbol No.	Description
A	1	K81439	Muffler
B	1	N19687-01	Oil Gauge Assembly (1-1/2" plug)
C	1	K68832	Two-Way Air Valve (See Page 14, Fig. 2)
D	1	R18219-G1	Oil Tank with Oil Gauge Installed
E	2	R13325	Oil Valve (See Page 7, Fig. 2)
F	1	K80538	Rod Float
G	1	K04983	Hex Nut #8-32
H	1	K78439	Float
J	1	K86957	Float Assembly (Includes F, G & H)



N20369

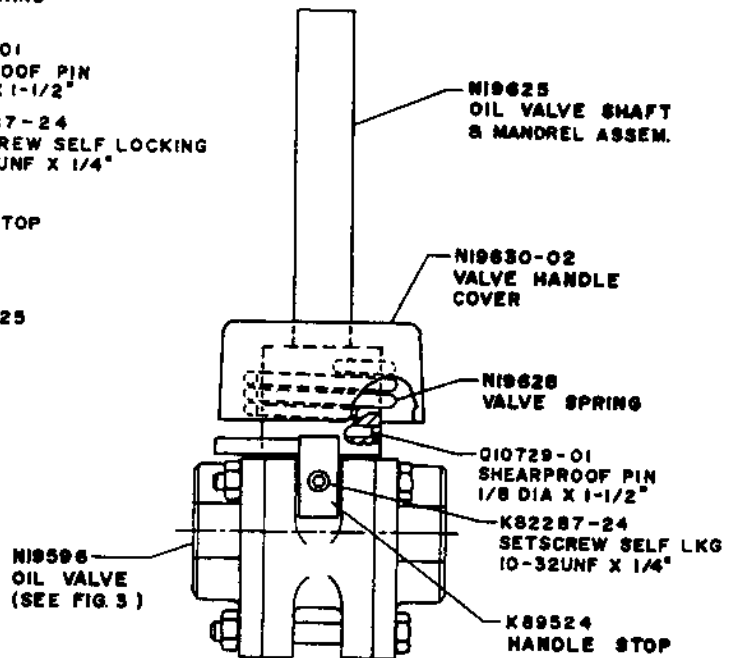
IMPORTANT: *Specify Model and Serial Number of Lift. Also Symbol Number and Name of Part.*

OIL VALVE



WALL CONTROL
 COMPLETE OIL VALVE ASSEMBLY R13325

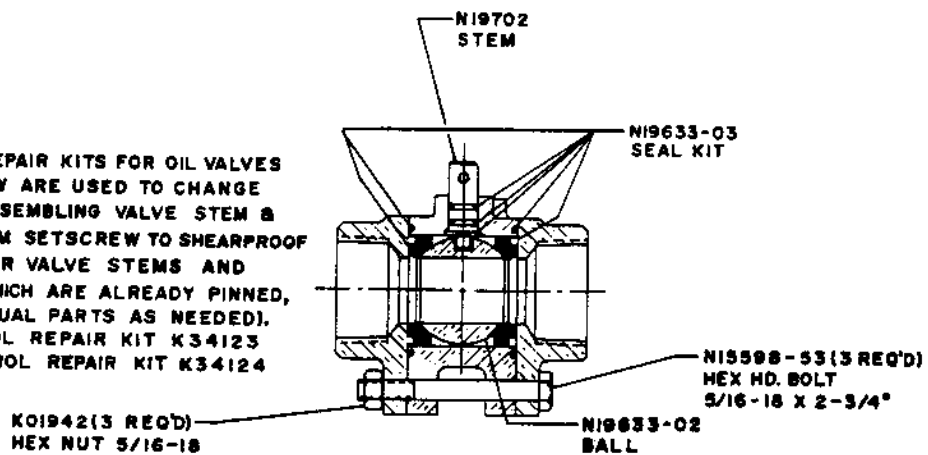
FIG. 1



FLOOR CONTROL
 COMPLETE OIL VALVE ASSEMBLY R14467

FIG. 2

NOTE: THE REPAIR KITS FOR OIL VALVES LISTED BELOW ARE USED TO CHANGE METHOD OF ASSEMBLING VALVE STEM & MANDREL FROM SETSCREW TO SHEARPROOF PIN. (NOTE: FOR VALVE STEMS AND MANDRELS WHICH ARE ALREADY PINNED, ORDER INDIVIDUAL PARTS AS NEEDED).
 WALL CONTROL REPAIR KIT K34123
 FLOOR CONTROL REPAIR KIT K34124



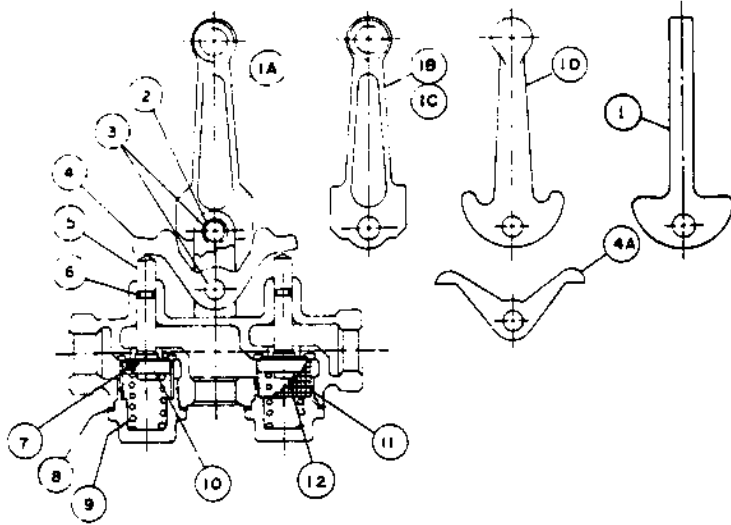
REPLACEMENT PARTS FOR OIL VALVE N19596

FIG. 3

R14579

IMPORTANT: Specify Model and Serial Number of Lift. Also Symbol Number and Name of Part.

AIR VALVE

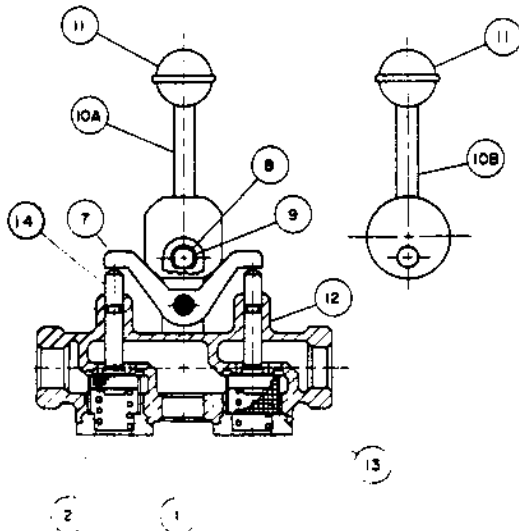


SYM	SYMBOL NO.		QTY	DESCRIPTION
	CONS	KINGSTON		
1		N19106	1	LEVER, FLOOR CONTROL
1A	N19494-28		1	LEVER, LOCKING
1B	N19494-27		1	LEVER, NON-LOCKING
1C		K82714-20	1	LEVER, LOCKING
1D		K82714-35	1	LEVER, NON-LOCKING
2	N19494-32	N19494-32	4	RETAINING RING
3	N19494-30	N19494-30	2	CLEVIS PIN
4	N19494-29		1	ROCKER ARM
4A		K82714-23	1	ROCKER ARM
5	N19494-26	K82714-28	2	STEM
6	N19494-21	K82714-27	2	"O" RING
7	N19494-22	K82714-29	2	SEAT WASHER
8	N19494-23		2	FIBER WASHER
9	N19494-20	K82714-32	2	SPRING
10	N19494-25	K82714-30	2	SEAT HOLDER
11	N19494-31		2	SCREEN
12		K82714-31	2	STEM NUT

FIG. 1

TO ORDER A COMPLETE VALVE ASSEMBLY, THE PART NUMBERS ARE:
 LOCKING TYPE (FULL HYDRAULIC WALL CONTROL) - K68832
 DEADMAN TYPE (SEMI-HYDRAULIC WALL CONTROL) - K85963 & K85963-02
 DEADMAN TYPE (ALL FLOOR CONTROL) - K85963-03

FOR AIR VALVE REPLACEMENT PARTS, FIRST DETERMINE MFR. OF VALVE:
 IF MFR. IS KINGSTON, USE PARTS LIST ABOVE (FIG. 1)
 IF MFR. IS CONSOLIDATED BRASS AND VALVE HAS A ONE-PIECE CAST HANDLE,
 USE PARTS LIST ABOVE (FIG. 1)
 IF MFR. IS CONSOLIDATED BRASS AND VALVE HAS A TWO-PIECE HANDLE WITH
 A PLASTIC KNOB, USE PARTS LIST BELOW (FIG. 2)



SYM	SYMBOL NO.		QTY	DESCRIPTION
	CONS	BRASS		
1	N20389-01		2	CAP
2	N20389-02		2	SPRING
7	N20389-07		1	ROCKER
8	N20389-08		2	CLEVIS PIN
9	N20389-09		4	RETAINING RING
10A	N20389-10		1	LEVER, LOCKING
10B	N20389-11		1	LEVER, NON-LOCKING
11	N20389-12		1	KNOB
12	N20389-13		1	BODY
13	N20389-14		2	SCREEN
14	N20389-15		2	STEM ASSEMBLY

FIG. 2

FIG. 2

R14580

IMPORTANT: Specify Model and Serial Number of Lift. Also Symbol Number and Name of Part.