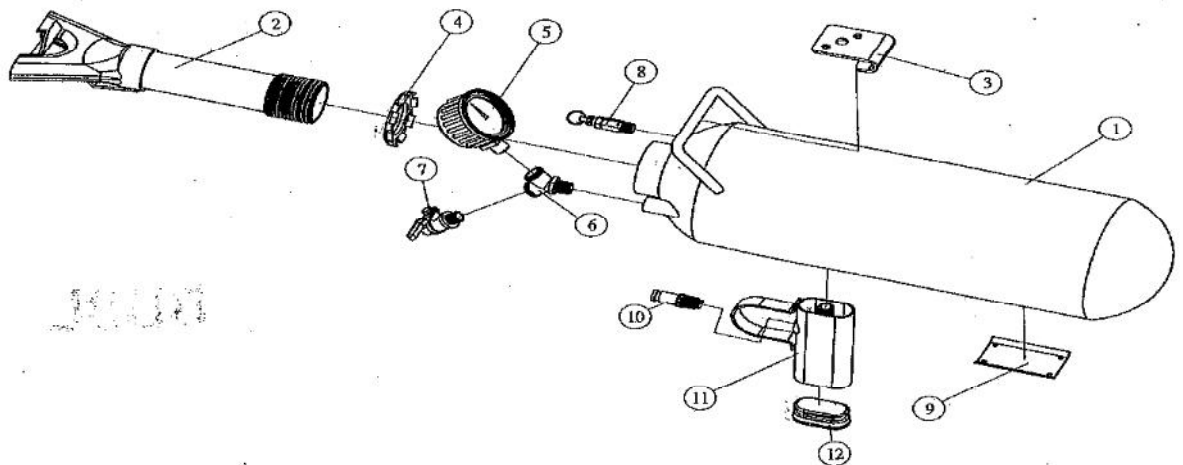


Replacing Safety Pop-off Valve (G12917B) (Ref # 8)

- 1) Use wrench to loosen (counter clock-wise) Safety Valve.
- 2) Use Teflon Tape on the thread of the new Safety Valve.
- 3) Thread (clock-wise) the new Safety Valve in by hand, then tighten with a wrench.

Gaither's Bead Bazooka™ (BB6L) BB9L

Replacement Parts list



<u>Ref. No.</u>	<u>Part No.</u>	<u>Description</u>
1.	12910 B	Air Tank w/piston valve inside
2.	12913 B	Slotted Barrel
3.	GB-55	Well Clip w/2 screws
4.	12912 B	(38.1 mm) 1 1/2 Lock Nut
5.	12914 B	Pressure Gauge.8Bar
6.	12915 B	Y Connect
7.	12916 B	(6.35 mm) 1/4 PT Intake valve
8.	12917 B	Safety Valve Max.8Bar/115psi
9.	12918 B	Name Plate Seat
10.	12919 B	Switch Valve
11.	12920 B	Grip w/trigger guard
12.	12921 B	Plastic Plug

