



Wind Things Up With Reelcraft

Hose Reel

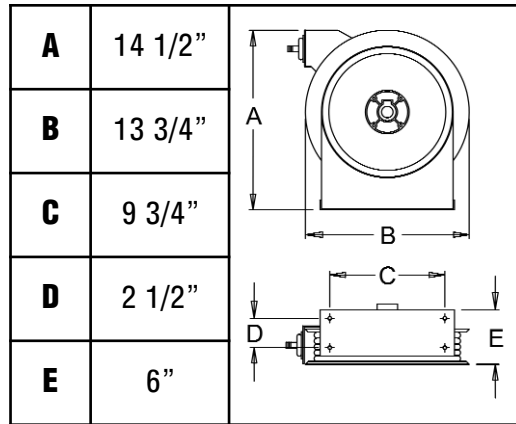
Operating Instructions and Parts List

Low Pressure Models

5400 OLP	5600 OLP
5440 OLP	5630 OLP
5450 OLP	5635 OLP

Safety

- I. Do not use reels at higher pressures or temperatures than listed on the back of this bulletin.
- II. Remove all spring tension before beginning disassembly process.



Four 5/16" Mounting holes.

Instructions

Installation: A flexible hose connection must be used between the hose reel inlet and the source of supply to prevent possible misalignment and binding.

Mounting: The hose reel is equipped with a universal mounting bracket so that it can be mounted on the floor, wall or ceiling; whichever place is convenient. The hose guide arm can be moved to the position desired by removing the screws fastening the guide bracket to the reel base. Shift the guide arm bracket so the hose comes off the reel at the desired position and replace the screws.

Lubrication: Hose reel spring and bearings are factory lubricated and require no further lubrication.

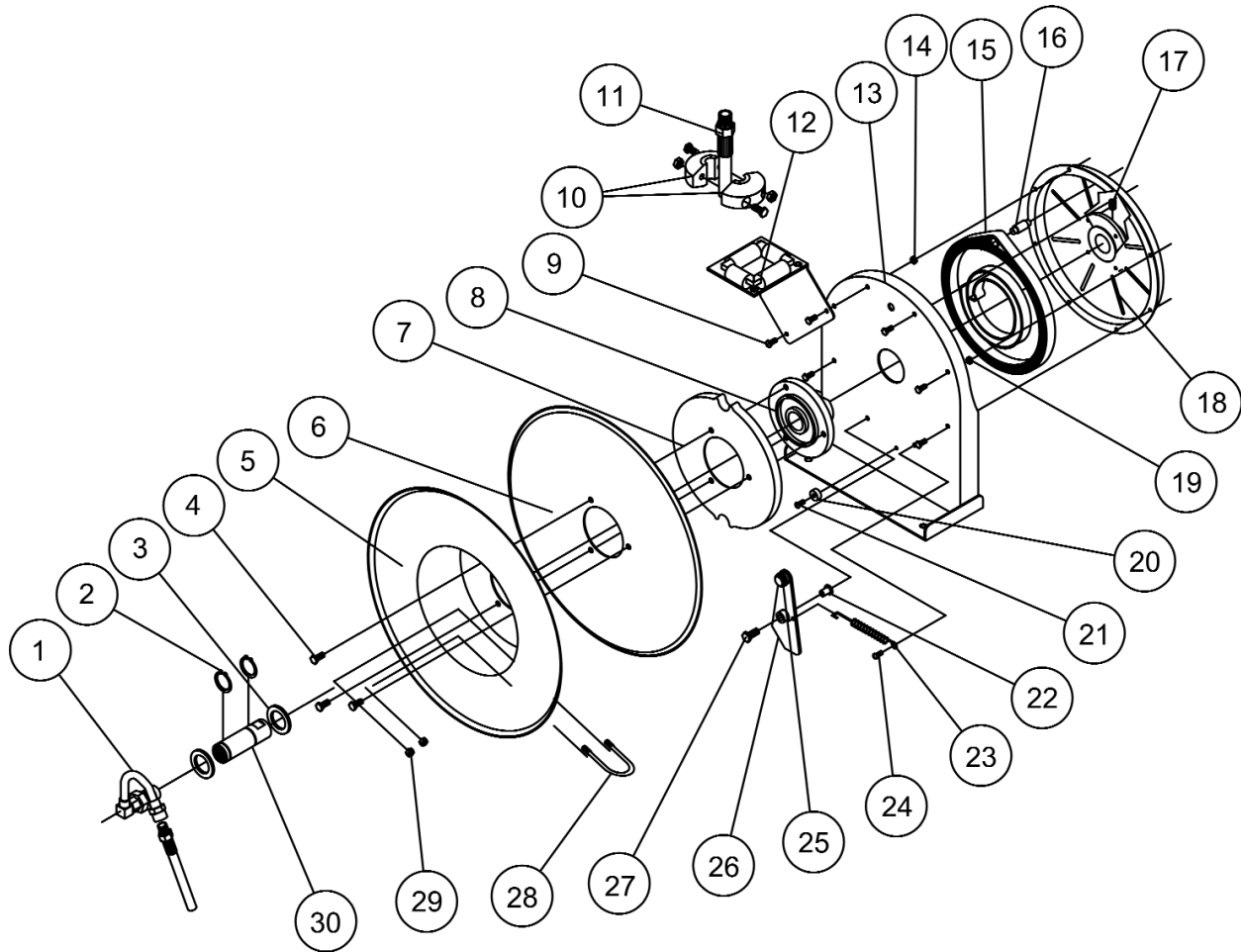
- Replacing Hose:**
1. Wind spool flange clockwise-facing swivel-until spring is tight.
 2. Back off three turns and latch.
 3. Insert hose through roller guide and hole in spool flange.
 4. Connect hose fitting to swivel joint and secure hose with clamps.

Adjustments: To adjust spring tension, add or remove wraps of hose from the spool, one wrap at a time until desired tension is obtained.

Repairs: Extensive repairs should be performed only by an authorized serviceman or factory to avoid damage which may void your warranty. Remove all spring tension before beginning disassembly process.

REELCRAFT

Wind Things Up With Reelcraft



Item #	Part #	# Req.	Description	Item #	Part #	# Req.	Description	Item #	Part #	# Req.	Description
1	S600886	1	Swivel Assembly	13	500101	1	Base Assembly	24	300001	5	10-32 x 3/8" Screw
2	300031	2	1" Snap Ring	14	300011	7	10-32 Hex Lock Nut	25	400020	1	O-ring
3	300034	2	Spacing Washer	16	S261360	1	Spring Case Stud	26	S400109	1	Latch Plate Assembly
4	S295-102	3	1/4" Plastite Hex Screw	17	300006	1	3/8-16 x 1/2" Set Screw	27	300035	1	10-32 x 1" Mach. Screw
5	260022	1	Sheave Flange	18	500103	1	Spring Case Assembly	29	261650-1	2	1/4-20 Zinc Nyloc Nut
6	500006	1	Sheave Disk	19	S82-15	1	10-32 x 3/8" Nyloc Nut	30	S400015	1	Main Shaft
7	S500019	1	Latch Cam	20	S400021	1	Latch Bumper				
8	S260648	1	Spring Arbor	21	S32-136	1	10-24 x 3/8" Mach. Screw				
9	300002	2	10-32 x 1/2" Screw	22	S400012	1	Latch Bushing				
12	500107	1	Guide Arm & Roller Assembly	23	S400018	1	Latch Spring				

Item #	Description	# Req.	Model 5400 OLP	Model 5440 OLP	Model 5450 OLP	Model 5600 OLP	Model 5630 OLP	Model 5635 OLP
10	Hose Bumper Assembly	1	None	1-HR1004A	1-HR1004A	None	1-HR1004	1-HR1004
11	Hose Assembly	1	None	601000-40	601000-50	None	S601011-30	S601013-35
15	Drive Spring Assembly	1	S503755	S503755	S503755	S504240	S504240	S504240
28	U-Bolt	1	3-117440	3-117440	3-117440	3-117440	3-117440	3-117440
Hose I.D. and Length			None	1/4" x 40'	1/4" x 50'	None	3/8" x 30'	3/8" x 35'
Reel Inlet Connection			3/8" F.P.T.	3/8" F.P.T.	3/8" F.P.T.	3/8" F.P.T.	3/8" F.P.T.	3/8" F.P.T.
Max. Operating Pressure			500 P.S.I.	300 P.S.I.	300 P.S.I.	500 P.S.I.	300 P.S.I.	300 P.S.I.
Max. Operating Temperature			210° F	150° F	150° F	210° F	150° F	150° F