



Models:
MOD30-18
MOD30-21
MOD30-24

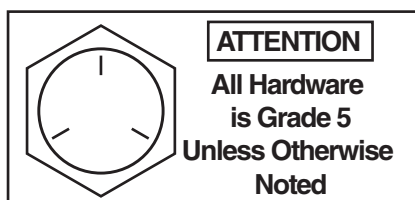
(500-530 Series)

INGROUND LIFTS

Capacity 60,000lbs. - 2-Post Series

Capacity 90,000lbs. - 3-Post Series

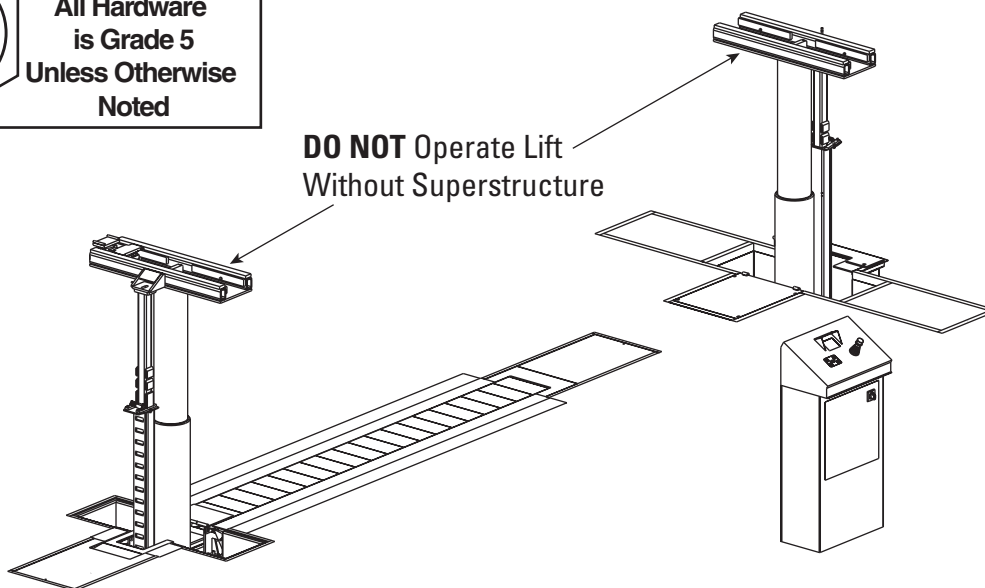
30,000 lbs. Per Jack



ATTENTION

All Hardware
is Grade 5
Unless Otherwise
Noted

DO NOT Operate Lift
Without Superstructure



P
A
R
T
S

B
R
E
A
K
D
O
W
N

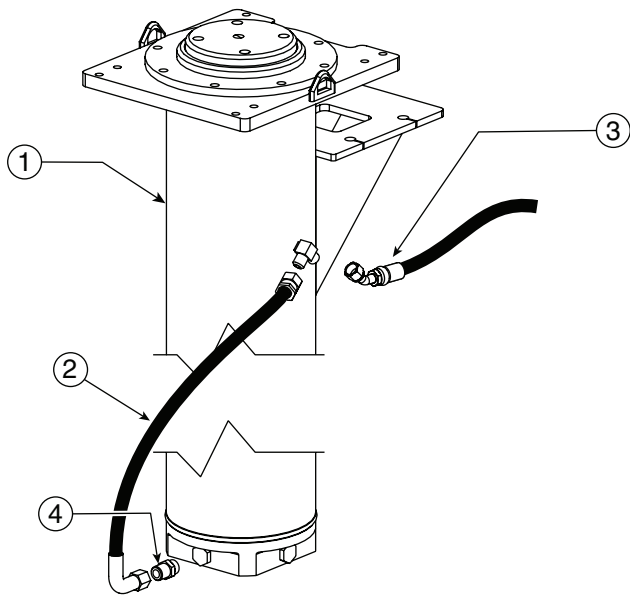
IMPORTANT: When ordering parts or requesting service always give exact model and jack serial number. Model number is shown on nameplate attached to cover plate. Jack serial number is located on the side of the plunger at point of attachment.

OWNERS RECORD
Complete information
at right and keep in
a safe place.

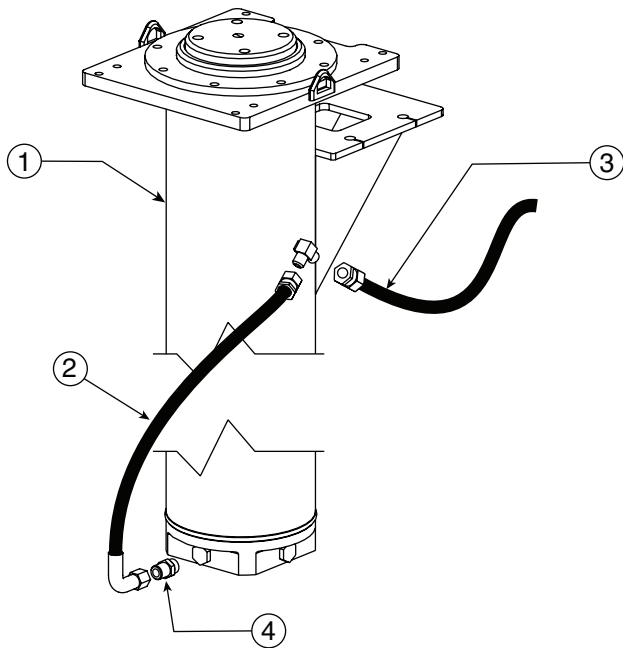
Date Installed _____
Installed in Bay # _____
Post Serial # _____
Moveable Post 1 _____
Moveable Post 2 _____
Stationary Post _____
Lift Serial # _____
Factory Order # _____
Lift Model # _____

NOTE: For replacement parts -See your nearest Rotary Parts Distributor.

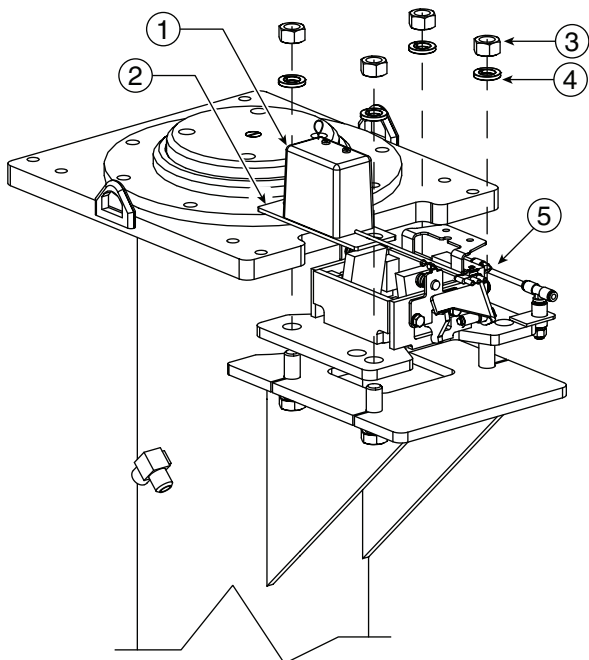
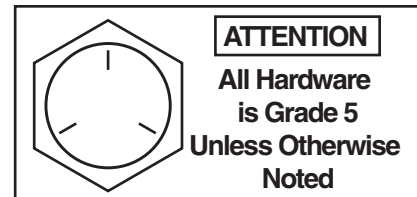




| MOVEABLE POST AND HOSES | | |
|-------------------------|--|----------|
| ITEM NO. | DESCRIPTION | PART NO. |
| 1 | Telescoping Hydraulic Post | JT14 |
| 2 | Post Hose 42" | FD921 |
| 3 | Front Post Hose (Housing): MOD30M-18 173" | FD924 |
| | MOD30M-21 273" | FD926 |
| | MOD30M-24 312" | FD925 |
| 4 | Male Adapter | FA2450 |



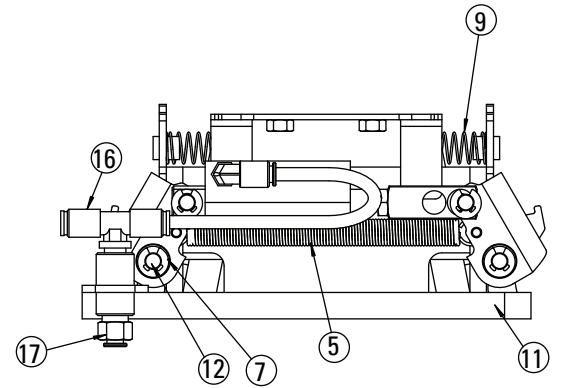
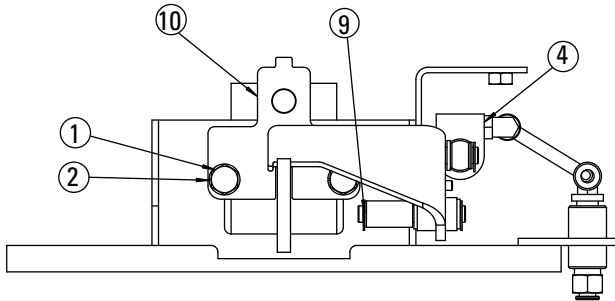
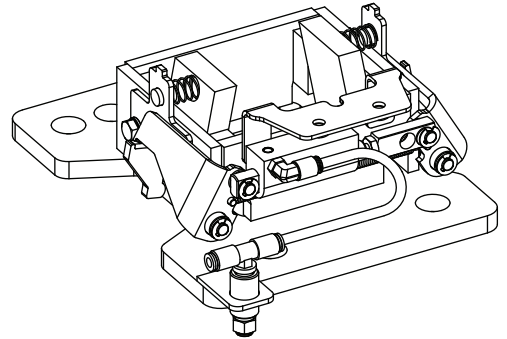
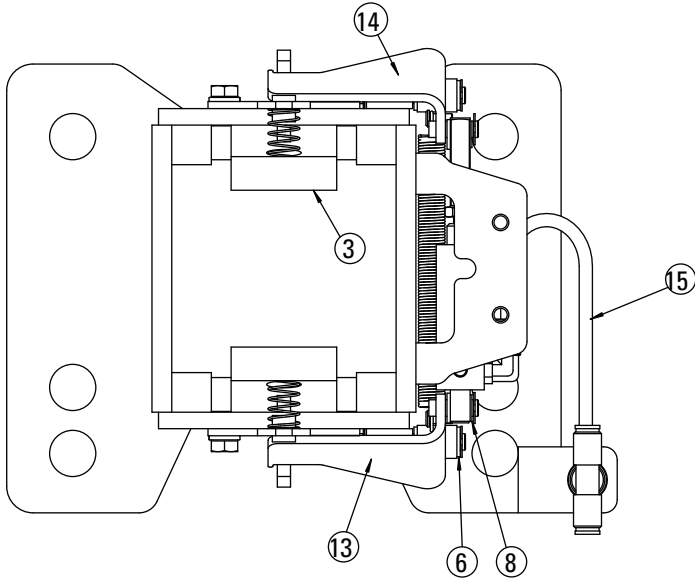
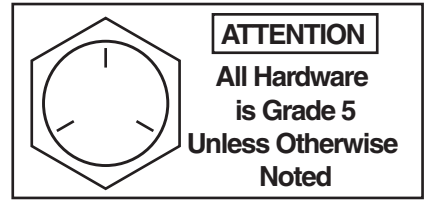
| STATIONARY POST AND HOSES | | |
|---------------------------|----------------------------|----------|
| ITEM NO. | DESCRIPTION | PART NO. |
| 1 | Telescoping Hydraulic Post | JT14 |
| 2 | Post Hose 42" | FD919 |
| 3 | Rear Stationary Post Hose | FD915 |
| 4 | Male Adapter | FA2421 |



| POST POSITION SENSOR, LOCKING LATCH ASSEMBLY AND HARDWARE | | |
|--|---------------------------------|----------|
| ITEM NO. | DESCRIPTION | PART NO. |
| 1. | Post Position Sensor | FA2411 |
| 2. | Post Position Sensor Adapter | FA2455-4 |
| 3. | 3/4"-10NC Hex Nut | 40760 |
| 4. | 3/4" Helical Spring Lock Washer | 40917 |
| 5. | Locking Latch Assembly | FA2452-1 |
| Note: Bolts are only used on 500 series and below | | |

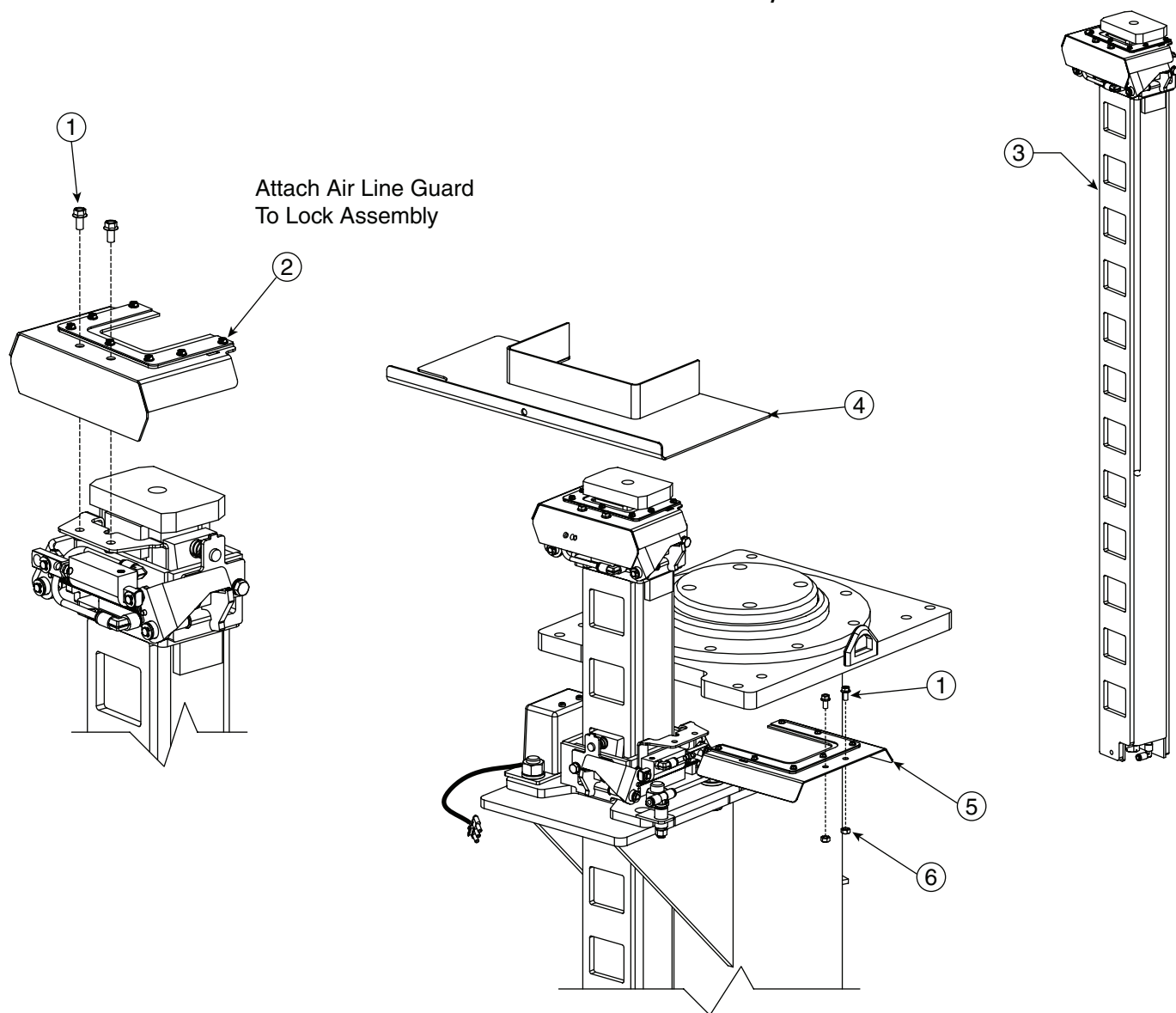
* These Components Are The Same For All Post

Locking Latch Assembly

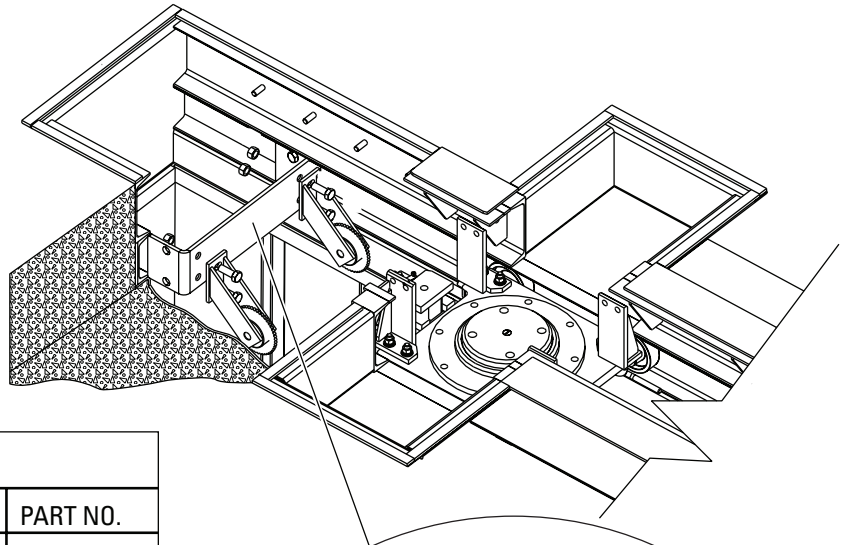
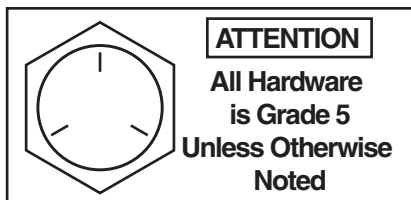
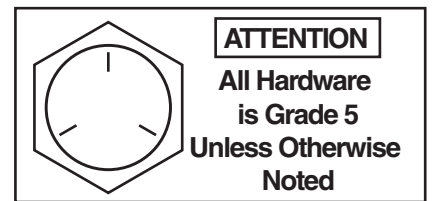
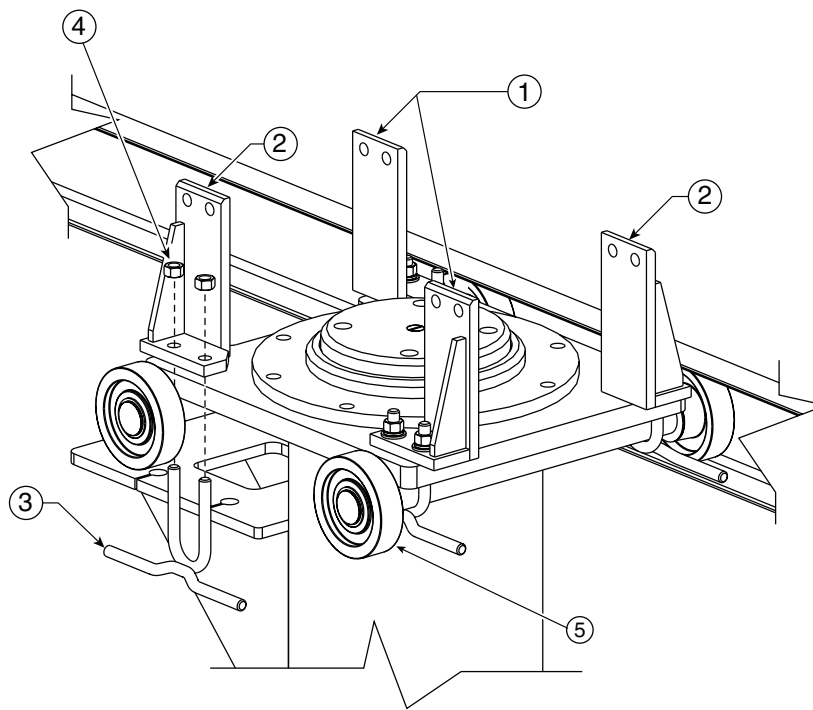


| ITEM | QTY | PART NO. | DESCRIPTION |
|------|-----|-----------|---|
| 1 | 4 | 40401 | 5/16"-18NC x 1/2" Lg. HHCS, PLTD |
| 2 | 4 | 40850 | 5/16" HELICAL SPRING LW, PLTD |
| 3 | 2 | FA2452-10 | LATCH WELDMENT |
| 4 | 1 | FA2452-13 | AIR CYLINDER ASSEMBLY |
| 5 | 1 | FA2452-14 | CONTROL PLATE SPRING |
| 6 | 6 | FA2452-15 | FLANGED BUSHING |
| 7 | 6 | FA2452-16 | 5/16" SHAFT RETAINING RING |
| 8 | 4 | FA2452-17 | NYLON WASHER |
| 9 | 2 | FA2452-18 | LATCH SPRING |
| 10 | 2 | FA2452-19 | RETAINER PLATE WELD |
| 11 | 1 | FA2452-2 | LATCH BASE WELDMENT |
| 12 | 2 | FA2452-22 | PIVOT PIN |
| 13 | 1 | FA2452-23 | L.H. CONTROL PLATE WELD |
| 14 | 1 | FA2452-28 | R.H. CONTROL PLATE WELD |
| 15 | 1 | FA2452-30 | AIR LINE |
| 16 | 1 | FA2452-31 | MALE BRANCH TEE - 1/4" NPT TO 1/4" TUBE |
| 17 | 1 | FC5191-6 | 1/4" TUBE TO 1/4" NPT PUSH CONNECTOR |

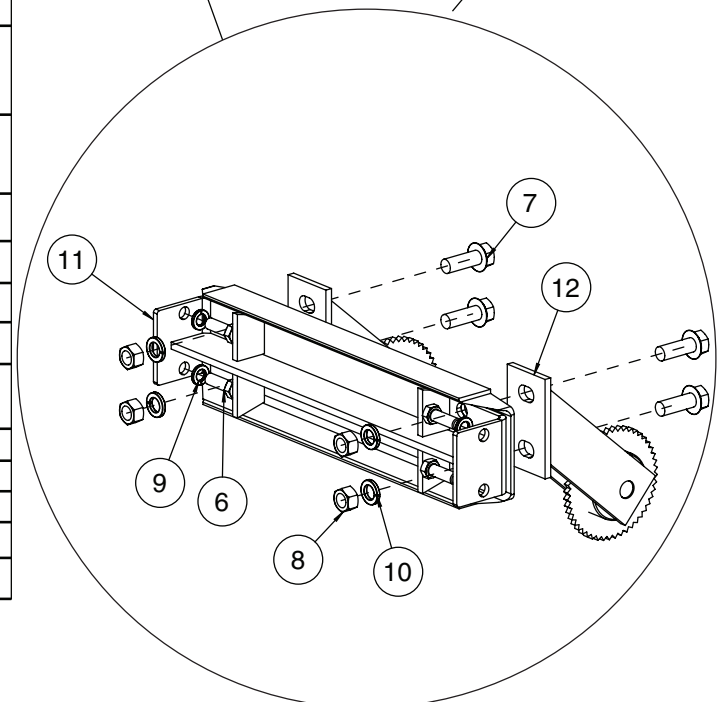
530 Series Lock Assembly Detail

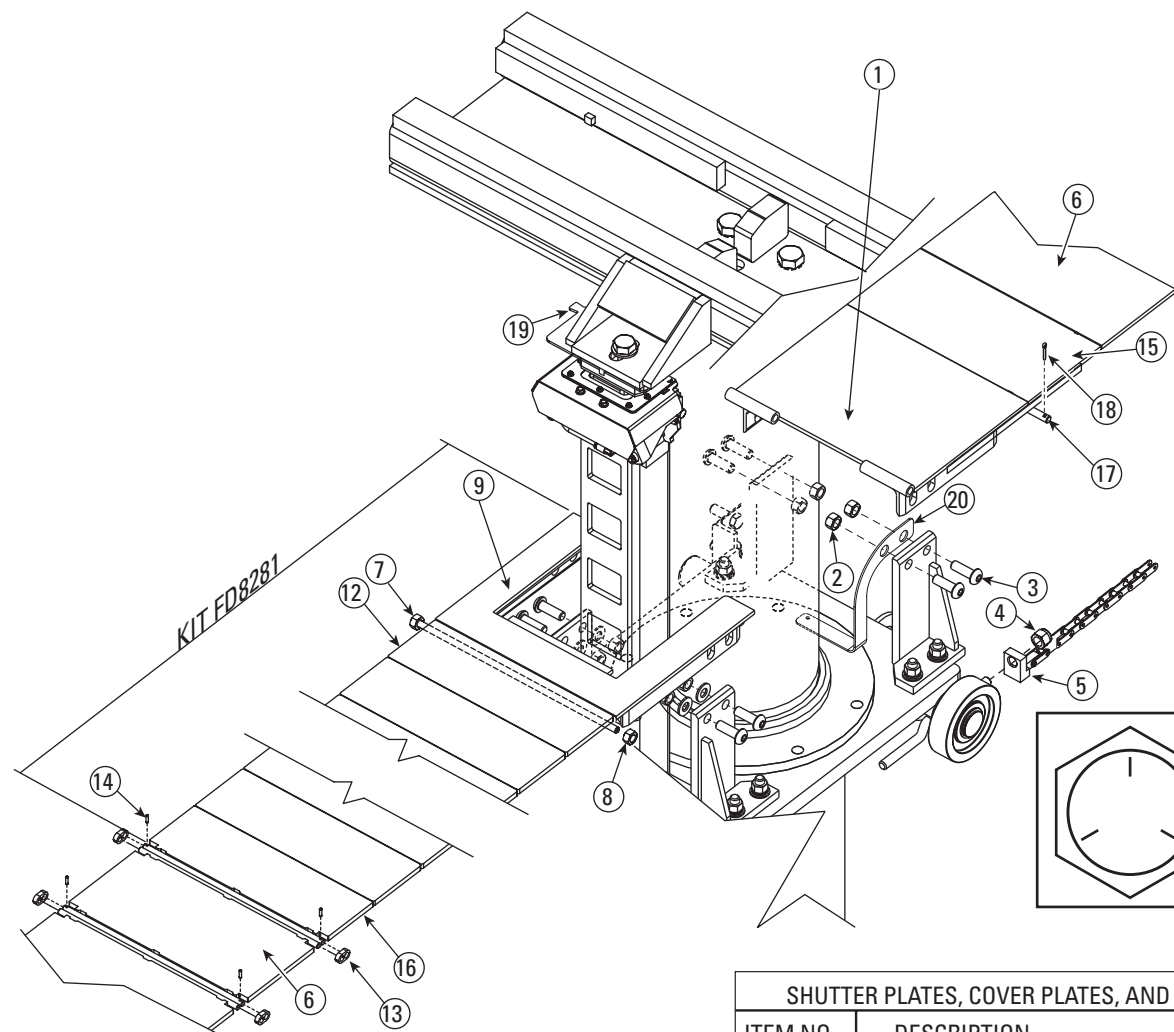


| LOCK ASSEMBLY DETAIL | | |
|----------------------|--|-----------|
| ITEM NO. | DESCRIPTION | PART NO. |
| 1. | 1/4-20NC x 1/2" Flanged Cap Screw Grade 5 | 40078 |
| 2. | Upper Cover Assembly | FA2452-51 |
| 3. | Lock Assembly | FA2452-32 |
| 4. | Splash Shield | FD6744 |
| 5. | Lower Cover Assembly | FA2452-47 |
| 6. | 1/4-20NC Hex Nut Grade 5 | 40624 |



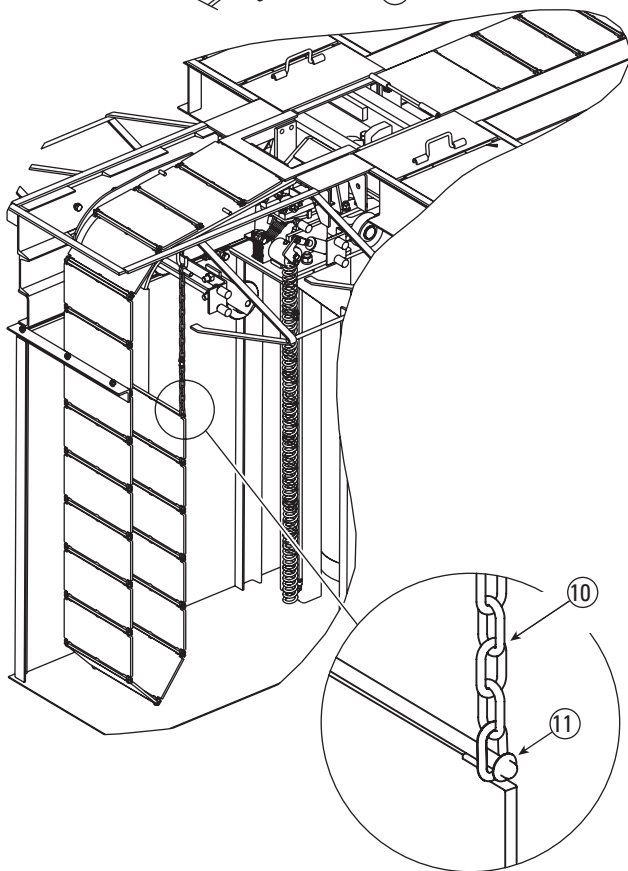
| FRONT AXLE AND IDLER ASSEMBLY DETAIL | | |
|--------------------------------------|---|-----------|
| ITEM NO. | DESCRIPTION | PART NO. |
| 1 | Shutter Plate Brackets Right Rear And Left Front | FD6731 |
| 2. | Shutter Plate Brackets Left Rear And Right Front | FD6732 |
| 3. | Axle/Chain Adjustment Bracket | FD70-48ZN |
| 4. | 1/2"-13 Hex Flg. WZLOCK Nut | 40704 |
| 5. | Front Axle Assembly | FD79 |
| 6. | 1/2"-13NC x 1-1/2" Lg HHCS, GRD5 | 40300 |
| 7. | 5/8"-11NC x 1-3/4" Lg. HEX FLGD WZLOCK CS, PLTD | 40371 |
| 8. | 5/8"-11NC Hex Nut, PLTD | 40724 |
| 9. | 1/2" Helical Spring LW, PLTD | 40915 |
| 10. | 5/8" Helical Spring LW | 40950 |
| 11. | Sprocket Hanger Asm. | FD6676 |
| 12. | Rear Idler Assembly | X040 |



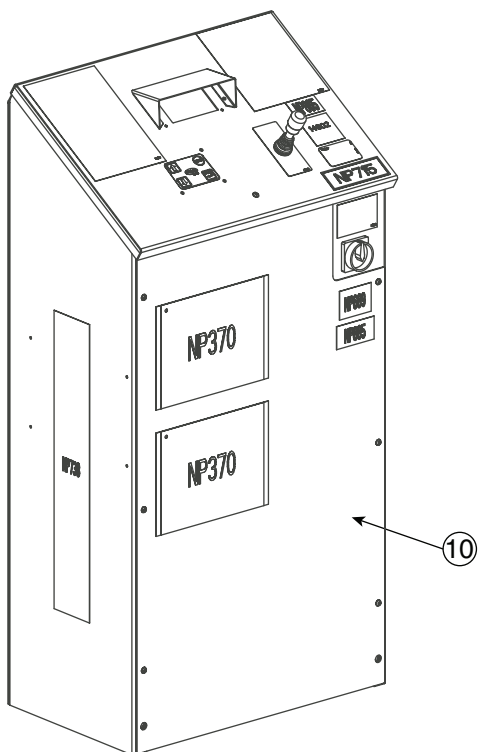
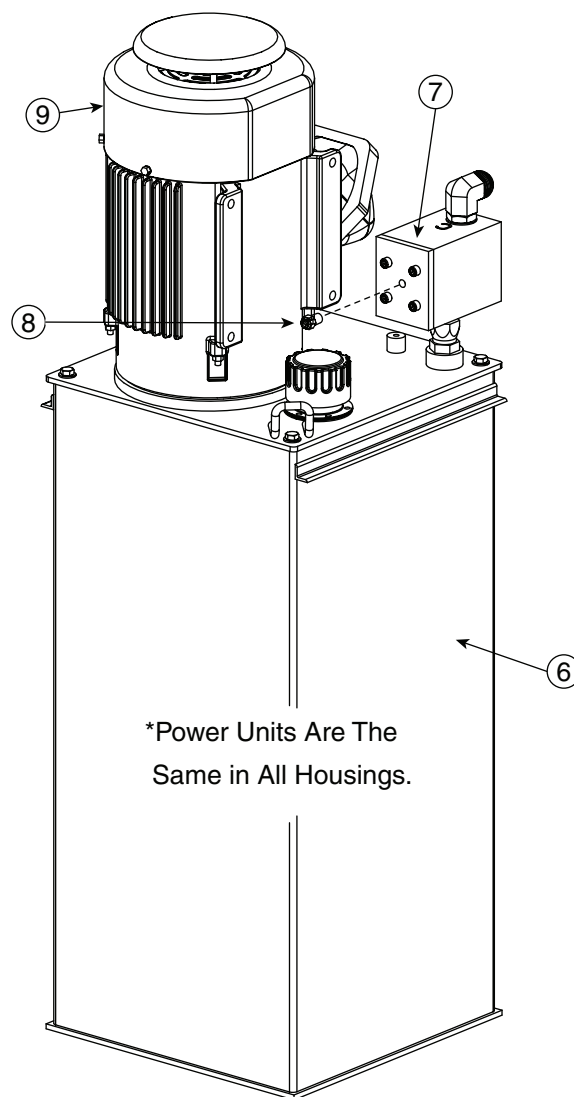
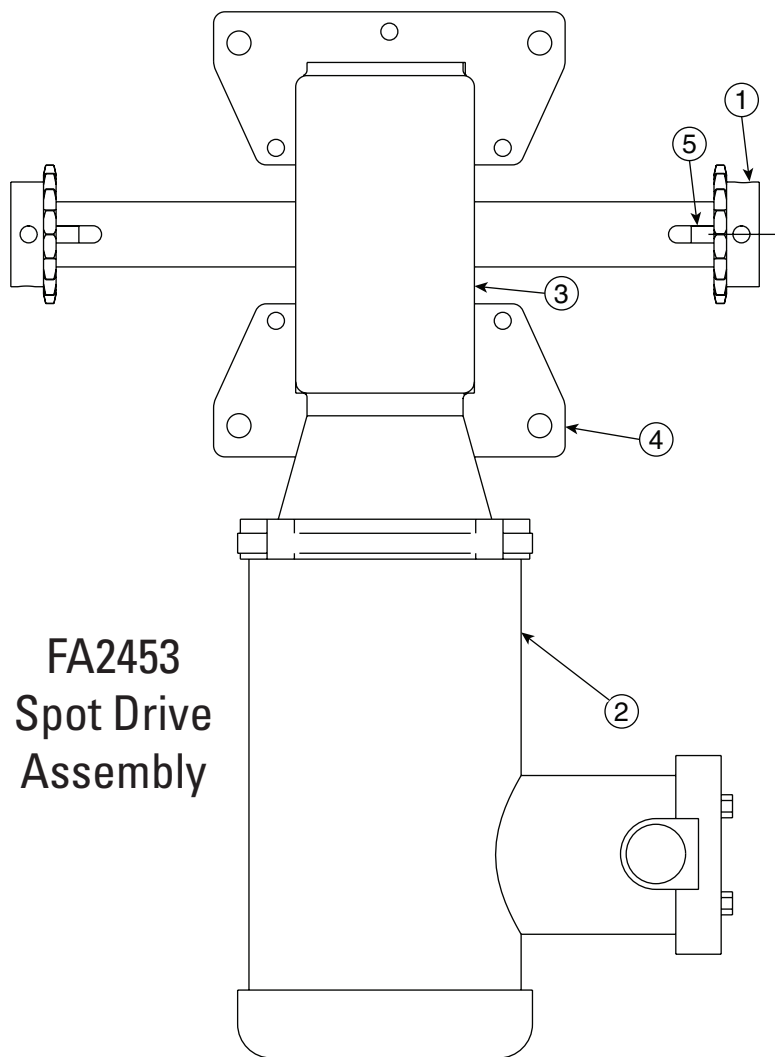


ATTENTION

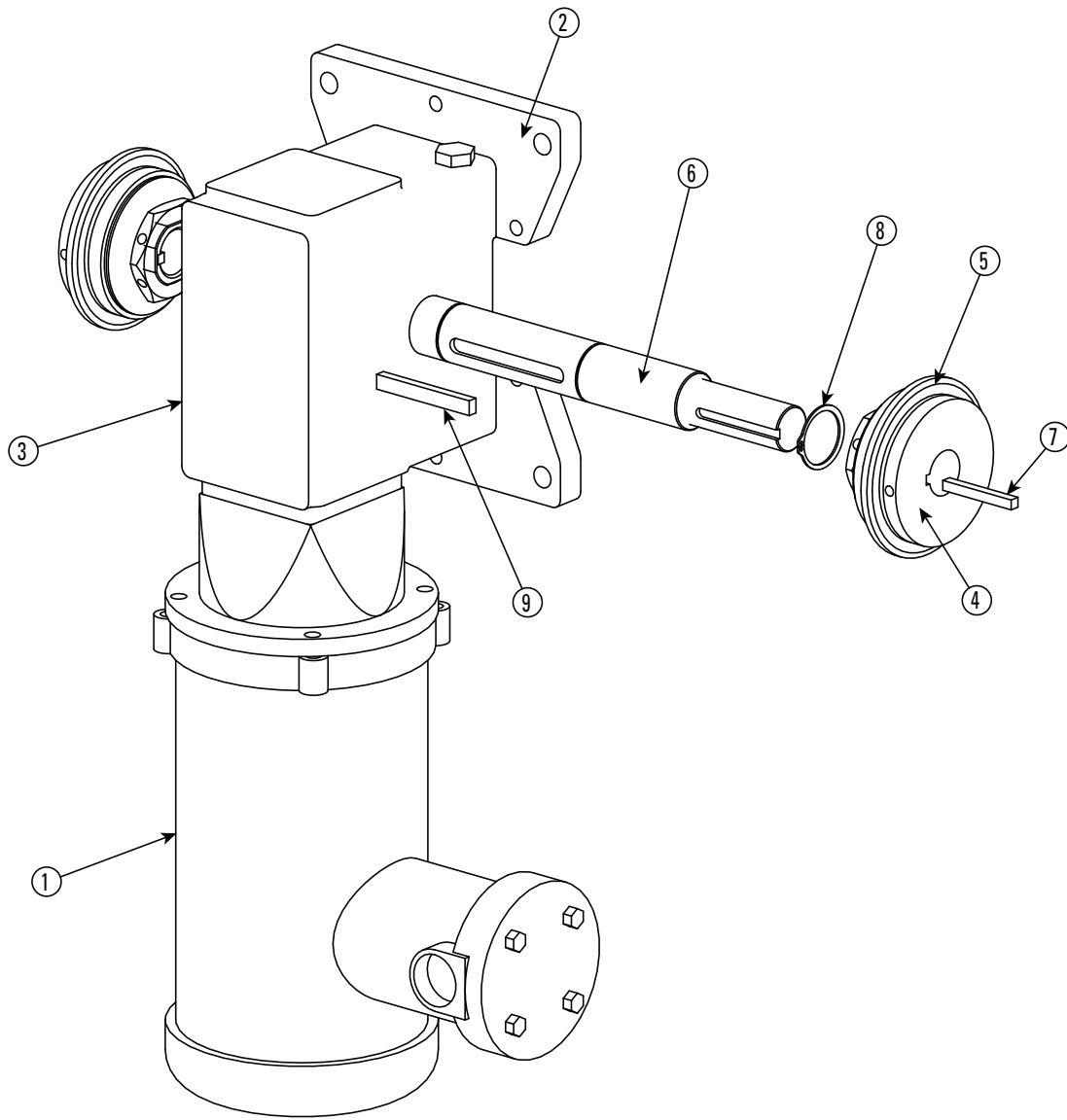
All Hardware
is Grade 5
Unless Otherwise
Noted



| SHUTTER PLATES, COVER PLATES, AND CHAIN DETAIL | | |
|--|---------------------------------|----------|
| ITEM NO. | DESCRIPTION | PART NO. |
| 1. | Front Post Cover Plate | FD6741 |
| 2. | 1/2"-13 Hex Flg. WZLOCK Nut | 40704 |
| 3. | 1/2"-13NC x 1-1/4" B H SHCS | 40284 |
| 4. | 1/2"-13NC Hex Nylon Lock Nut | 40707 |
| 5. | Drive Chain Assembly | |
| | MOD30M-18 | FD7169 |
| | MOD30M-21 | FD7168 |
| | MOD30M-24 | FD7167 |
| 6. | Shutter Plate | FD6739 |
| 7. | Link Pin | FD6711-3 |
| 8. | 1/4"-20NC Nylon Insert Lock Nut | 40642 |
| 9. | Post Cover Plate (Rear) | FD6733 |
| 10. | Shutter Plate Extension Chain | X048 |
| 11. | 5/16" Push Nut | 40673 |
| 12. | Shutter Plate | FD6714 |
| 13. | Link | FD6669 |
| 14. | Roll Pin | 14406 |
| 15. | Jack Shutter Plate | FD6740 |
| 16. | Transition Plate | FD6743 |
| 17. | Link Pin | FD6665-2 |
| 18. | 1/8" x 3/4" Cotter Pin | 41200 |
| 19. | Vertical Cable Mount | FA2455 |
| 20. | Horizontal Cable Mount | FA2454-3 |
| | | |



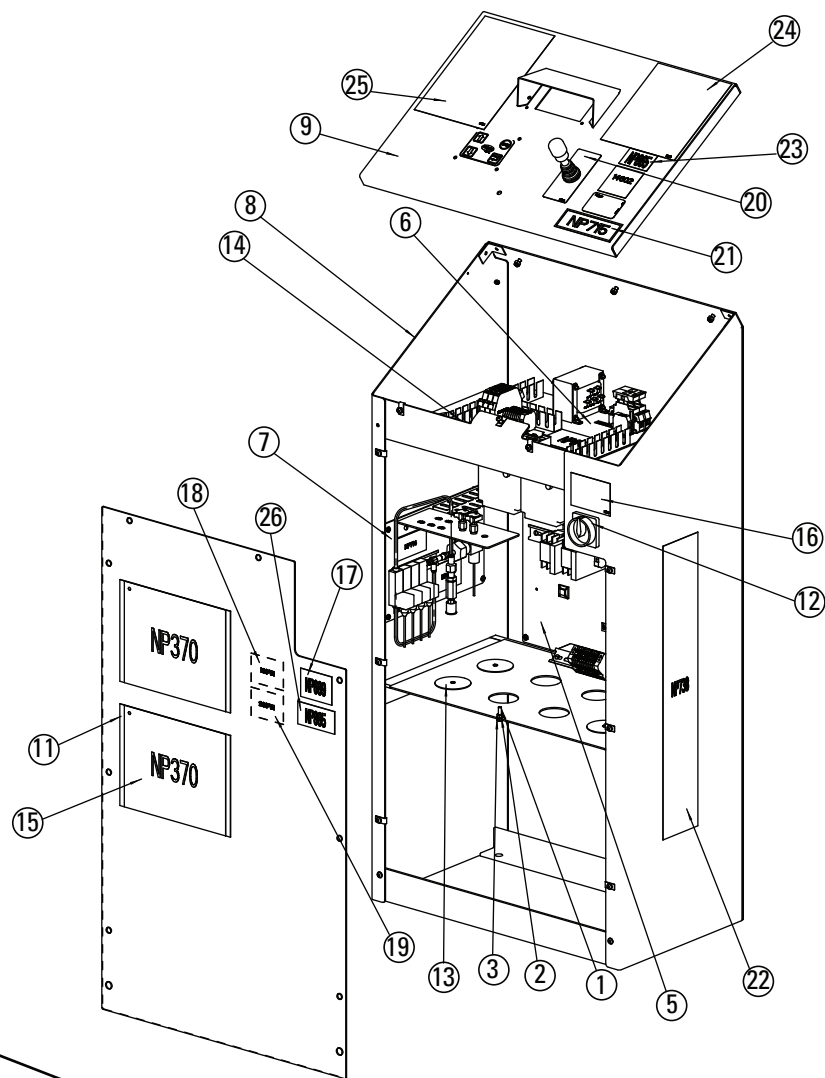
| MOTOR CHAIN DRIVE ASSEMBLY AND POWER UNIT | | |
|---|---------------------------------|-----------|
| ITEM NO. | DESCRIPTION | PART NO. |
| 1. | Sprocket | FA2414-4 |
| 2. | 1/2hp. Motor T.E.F.C. | FA2453-1 |
| 3. | Gear Box 40:1 | FA2453-2 |
| 4. | Mounting Base Bar | FA2453-4 |
| 5. | 3/8" x 3/8" x 1-1/2" Key | FD7120PC5 |
| 6. | 230/460 Power Unit | P2008 |
| 7. | Check Valve | FA2443 |
| 8. | Male Connector | FC5191-6 |
| 9. | Motor 5hp. 230/460v | P2000-12 |
| 10 | 230V MOD30 2-Post Control Panel | MC2E-230Y |
| | 460V MOD30 2-Post Control Panel | MC2E-460Y |
| | 575V MOD30 2-Post Control Panel | MC2E-575Y |
| | 230V MOD30 3-Post Control Panel | MC3E-230Y |
| | 460V MOD30 3-Post Control Panel | MC3E-460Y |
| | 575V MOD30 3-Post Control Panel | MC3E-575Y |



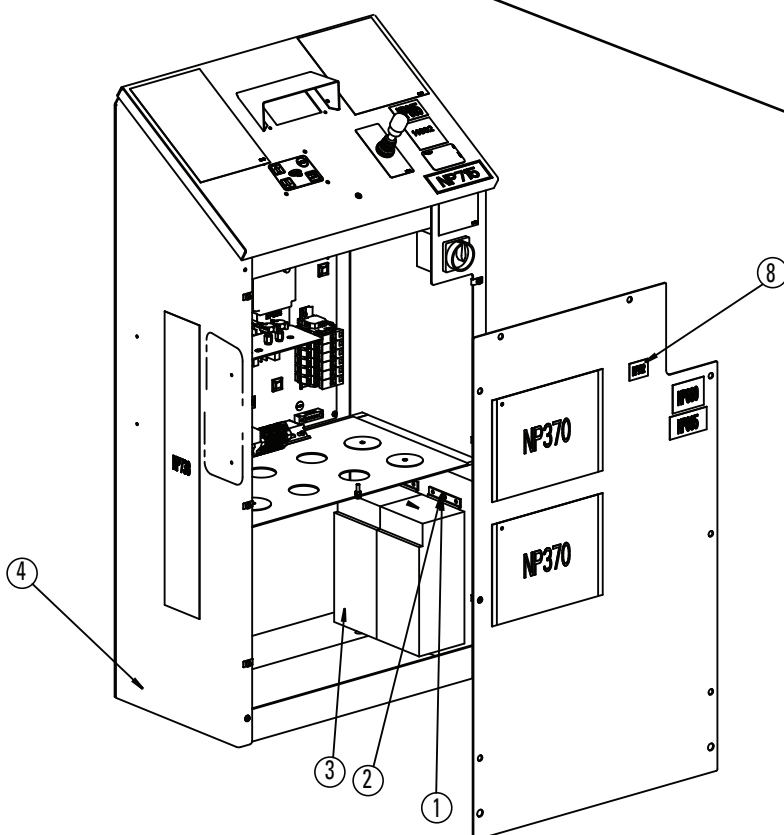
| FA2456 SPOT DRIVE ASSEMBLY W/ CLUTCH | | | |
|--------------------------------------|-----|----------|--------------------------|
| ITEM | QTY | PART NO. | DESCRIPTION |
| 1 | 1 | FA2453-1 | 1/2 HP MOTOR T.E.F.C. |
| 2 | 2 | FA2453-4 | MOUNTING BASE BAR |
| 3 | 1 | FA2453-6 | GEARBOX 40:1 |
| 4 | 2 | FD7171-1 | CLUTCH |
| 5 | 2 | FD7171-2 | SPROCKET #40 - 26 TEETH |
| 6 | 1 | FD7171-3 | GEAR BOX SHAFT |
| 7 | 2 | FD7171-4 | SLIP CLUTCH SPROCKET KEY |
| 8 | 2 | FD7171-5 | SNAP RING |
| 9 | 1 | FD7171-6 | GEAR BOX KEY |

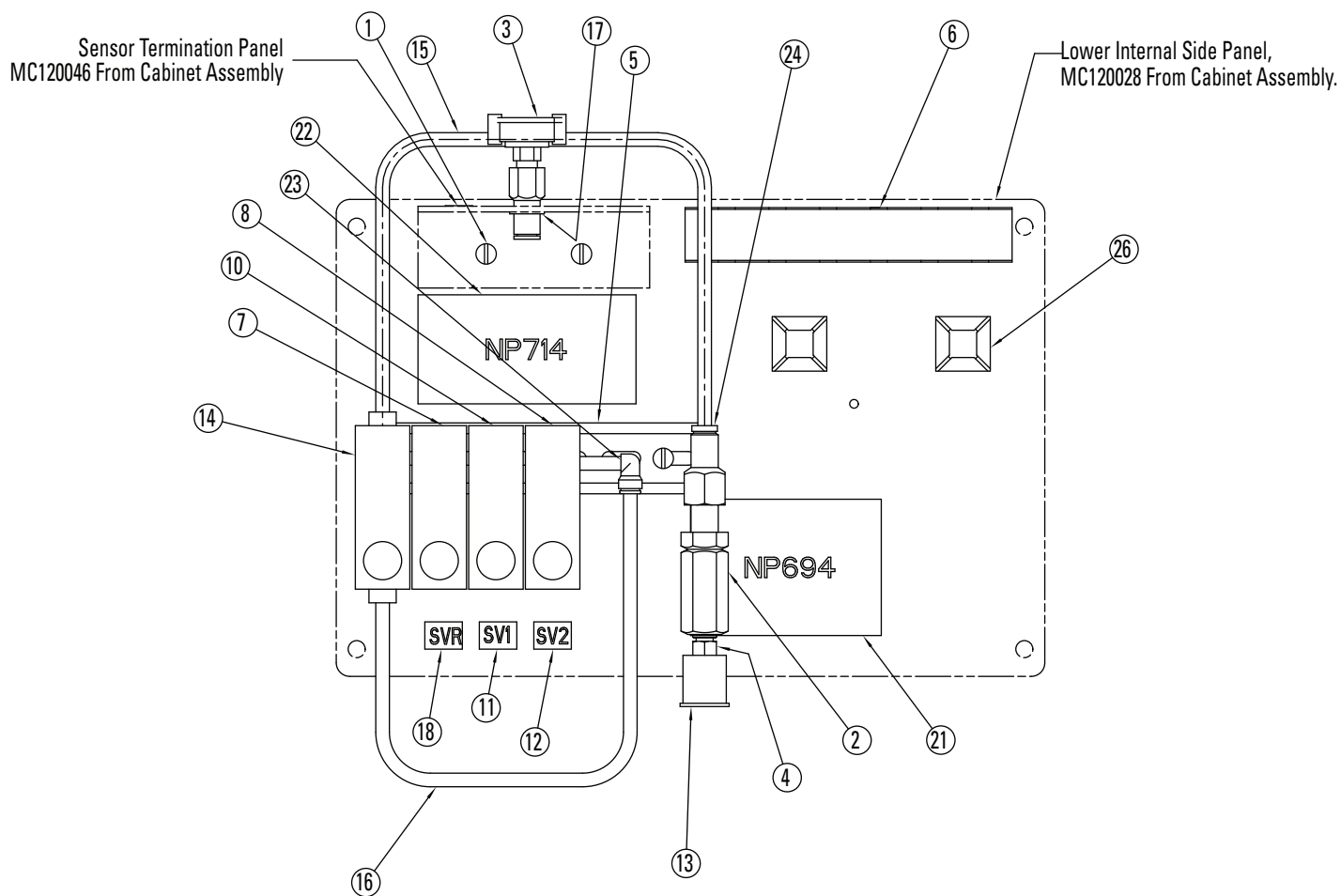
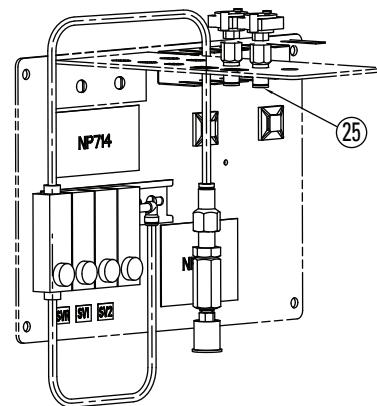
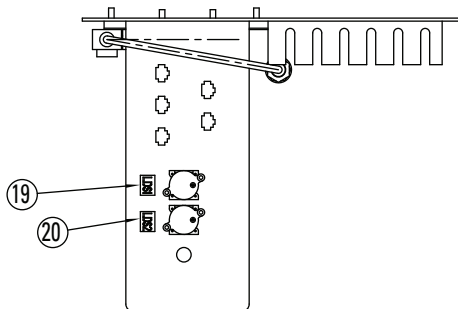
| MOD30 CONTROL CABINET ASSEMBLY 2-POST 230V | | | |
|---|-----|------------|--|
| ITEM | QTY | PART NO. | DESCRIPTION |
| 1 | 1 | 40108 | 1/4"-20NC x 1" Lg. HHCS, GRD 5 PLTD |
| 2 | 1 | 40625 | 1/4"-20NC HEX NUT, PLTD |
| 3 | 1 | 40779 | 1/4" EXT TOOTH LOCK WASHER |
| 4 | 1 | MC100003-4 | MOD30 MEMORY CARD (2-POST) |
| 5 | 1 | MC110095 | 230V LOWER BACK PANEL ASSEMBLY |
| | 1 | MC110097 | 460V LOWER BACK PANEL ASSEMBLY |
| 6 | 1 | MC110099 | 230V UPPER INTERNAL PANEL ASSEMBLY |
| | 1 | MC110101 | 460V UPPER INTERNAL PANEL ASSEMBLY |
| 7 | 1 | MC110103 | LOWER SIDE INTERNAL PANEL ASSEMBLY |
| 8 | 1 | MC110067 | CABINET ASSEMBLY |
| 9 | 1 | MC110068 | COVER ASSEMBLY |
| 10 | 1 | MC110077 | WIRE & HARNESS MOD30 2-POST |
| 11 | 2 | MC130054 | POUCH |
| 12 | 1 | MC130167 | DISCONNECT SWITCH |
| 13 | 4 | MC130184 | 2" GALVANIZED HOLE PLUG |
| 14 | 4 | MC130189 | 2" INSERT BUSHING |
| 15 | 2 | NP370 | PLACARD W/BLACK PLACTIC TIE (ALI/WL500 w) |
| 16 | 1 | NP688 | NAMEPLATE |
| 17 | 1 | NP689 | NAMEPLATE |
| 18 | 1 | NP691 | NAMEPLATE |
| 19 | 1 | NP692 | NAMEPLATE |
| 20 | 2 | NP695 | NAMEPLATE |
| 21 | 1 | NP715 | NAMEPLATE |
| 22 | 1 | NP738 | NAMEPLATE |
| 23 | 1 | NP865 | NAMEPLATE |
| 24 | 1 | NP879 | NAMEPLATE |
| 25 | 1 | NP882 | NAMEPLATE |
| 26 | 1 | NP885 | NAMEPLATE |
| 27 | 1 | WD039 | CONTROL DRAWING |
| MOD30 CONTROL CABINET ASSEMBLY 2-POST 575V | | | |
| 1 | 4 | 40369 | 1/4"-20 BHCS x 1/2 Lg. SS |
| 2 | 4 | 40625 | 1/4"-20NC HEX NUT, PLTD |
| 3 | 2 | FA7243 | TRANSFORMER |
| 4 | 1 | MC110091 | MOD30 CONTROL CABINET ASSEMBLY 2-POST 575V |
| 5 | 3 | MC130024 | CORD GRIP |
| 6 | 9 | MC130091 | WIRE NUT |
| 7 | 1 | MC130135 | WIRE |
| 8 | 1 | NP782 | NAMEPLATE |

**MOD30 2-Post 230V - 460V
Control Cabinet Assembly**



**MOD30 2-Post 575V
Control Cabinet Assembly**

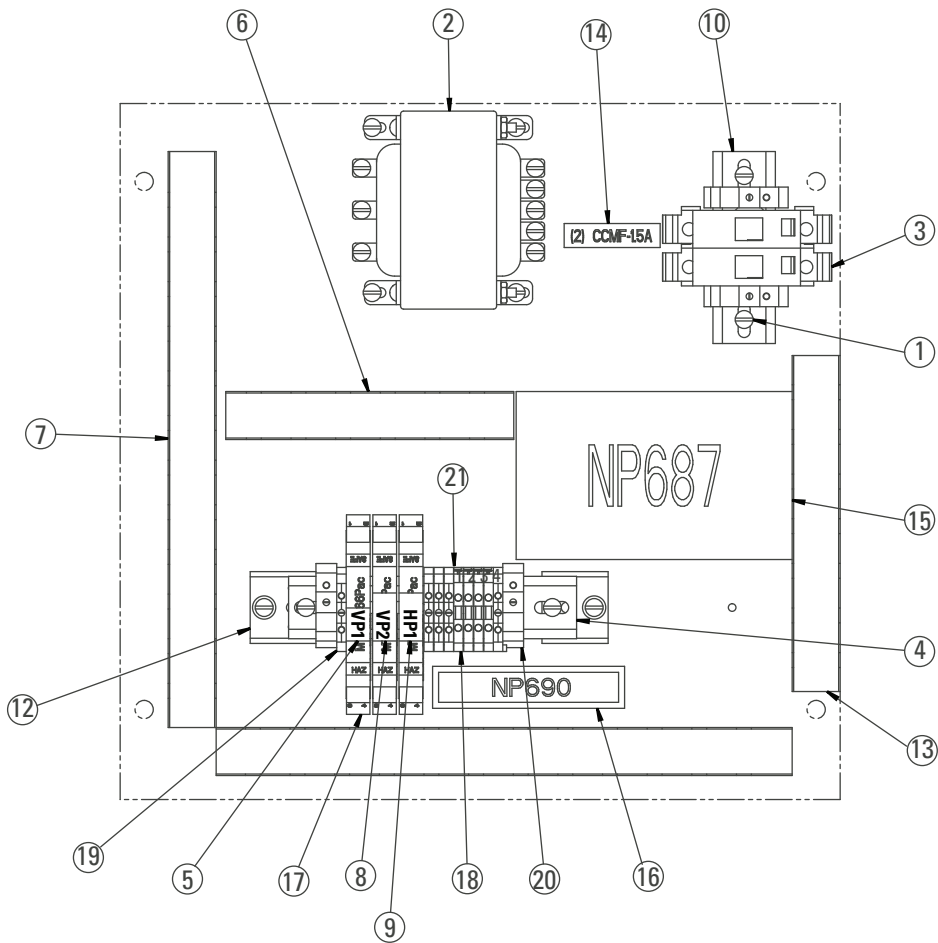




| ITEM | QTY | PART NO. | DESCRIPTION | ITEM | QTY | PART NO. | DESCRIPTION |
|------|-----|-----------|----------------------------------|------|-----|----------|------------------------|
| 1 | 4 | 40036 | #10-32NF X 1/2" Lg. SLOTTED PHMS | 14 | 1 | MC130156 | AIR VALVE |
| 2 | 1 | FA3134-12 | FILTER | 15 | 1 | MC130157 | AIR LINE |
| 3 | 2 | FA7186-15 | PRESSURE SWITCH | 16 | 1 | MC130173 | AIR LINE 15" |
| 4 | 1 | FC147-8 | MALE CONNECTOR | 17 | 2 | MC130183 | SPEED NUT PUSH ON TYPE |
| 5 | 1 | MC130012 | DIN RAIL | 18 | 1 | MC130205 | LABEL, "SVR" |
| 6 | 1 | MC130033 | WIRE WAY | 19 | 1 | MC130206 | LABEL, "LDS1" |
| 7 | 1 | MC130046 | AIR VALVE, END | 20 | 1 | MC130207 | LABEL, "LDS2" |
| 8 | 1 | MC130047 | AIR VALVE, INLET | 21 | 1 | NP694 | NAMEPLATE |
| 9 | 1 | MC130048 | CONNECTOR NOT SHOWN, SEE NOTE | 22 | 1 | NP714 | NAMEPLATE |
| 10 | 1 | MC130115 | AIR VALVE, SECTION | 23 | 1 | P553-10 | ELBOW |
| 11 | 1 | MC130116 | LABEL, "SV1" | 24 | 1 | T140081 | FEMALE CONNECTOR |
| 12 | 1 | MC130117 | LABEL, "SV2" | 25 | 2 | T140151 | FEMALE CONNECTOR |
| 13 | 1 | MC130154 | 3/4" CAPLUG | 26 | 2 | XS130094 | WIRE TIE DOWN |

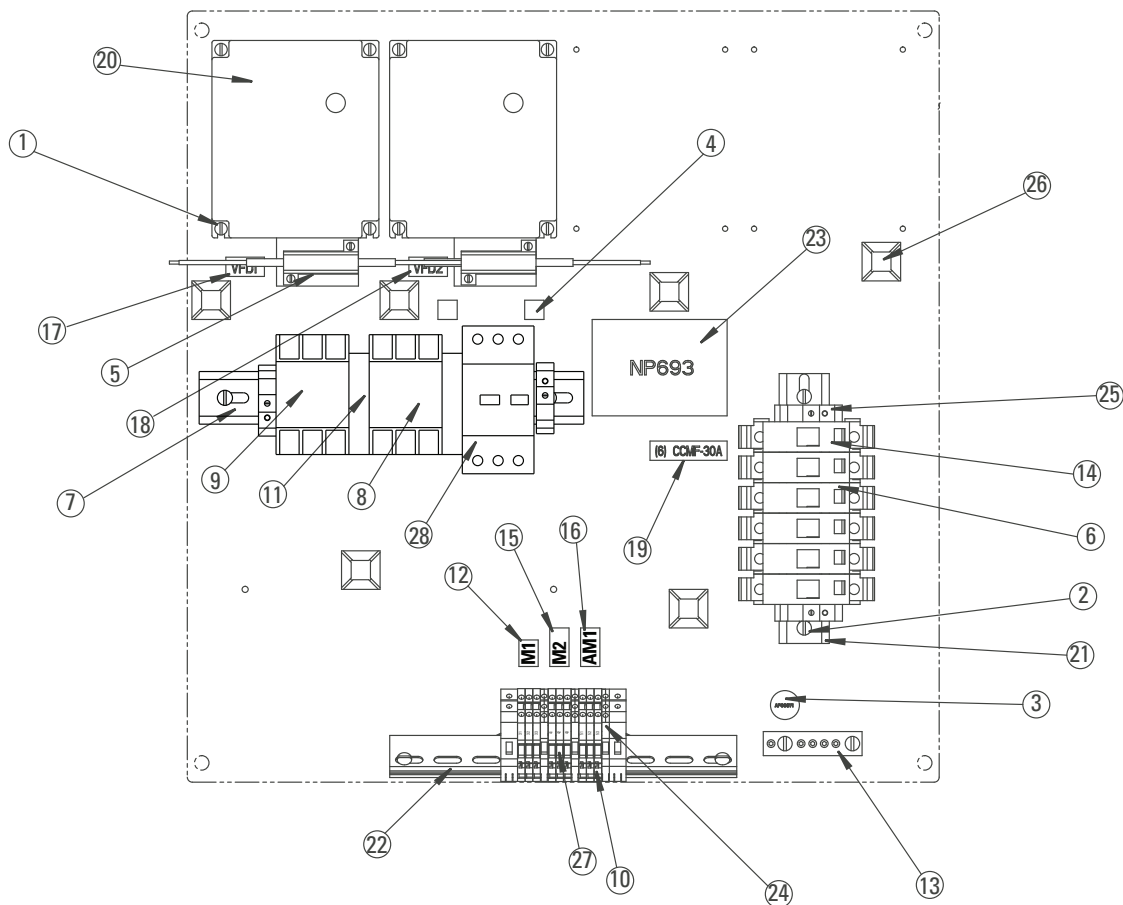
| UPPER INTERNAL PANEL ASSEMBLY 2-POST | | | |
|--------------------------------------|-----|----------|--|
| ITEM | QTY | PART NO. | DESCRIPTION |
| 1 | 10 | 40036 | #10-32NF x 1/2" Lg. SLOTTED PHMS |
| 2 | 1 | FA7990 | TRANSFORMER |
| 3 | 2 | MC130003 | FUSE TERMINAL BLOCK |
| 4 | 1 | MC130012 | DIN RAIL |
| 5 | 1 | MC130200 | LABEL, VP1 |
| 6 | 1 | MC130033 | WIRE WAY |
| 7 | 2 | MC130034 | WIRE WAY |
| 8 | 1 | MC130201 | LABEL, VP2 |
| 9 | 1 | MC130203 | LABEL, HP1 |
| 10 | 1 | MC130143 | DIN RAIL |
| 11 | 2 | MC130164 | FUSE, 1.5A @ 230V (NOT SHOWN LOCATED INSIDE OF MC130031) |
| | 2 | MC130163 | FUSE, 0.8A @ 460V (NOT SHOWN LOCATED INSIDE OF MC130031) |

| | | | |
|----|---|----------|-----------------------------|
| 12 | 2 | MC130169 | INSULATING SPACER DIM RAILS |
| 13 | 1 | MC130172 | WIRE WAY |
| 14 | 1 | MC130185 | LABEL, "CCMF" 1.5A |
| | | MC130188 | LABEL, "CCMF" 0.8A |
| 15 | 1 | NP687 | NAMEPLATE |
| 16 | 1 | NP690 | NAMEPLATE |
| 17 | 3 | XS130066 | SHUNT-DIODE SAFETY BARRIER |
| 18 | 4 | XS130080 | TERMINAL BLOCK |
| 19 | 5 | XS130081 | GROUND BLOCK |
| 20 | 4 | XS130085 | END STOP |
| 21 | 1 | XS130119 | MARKER CARDS |

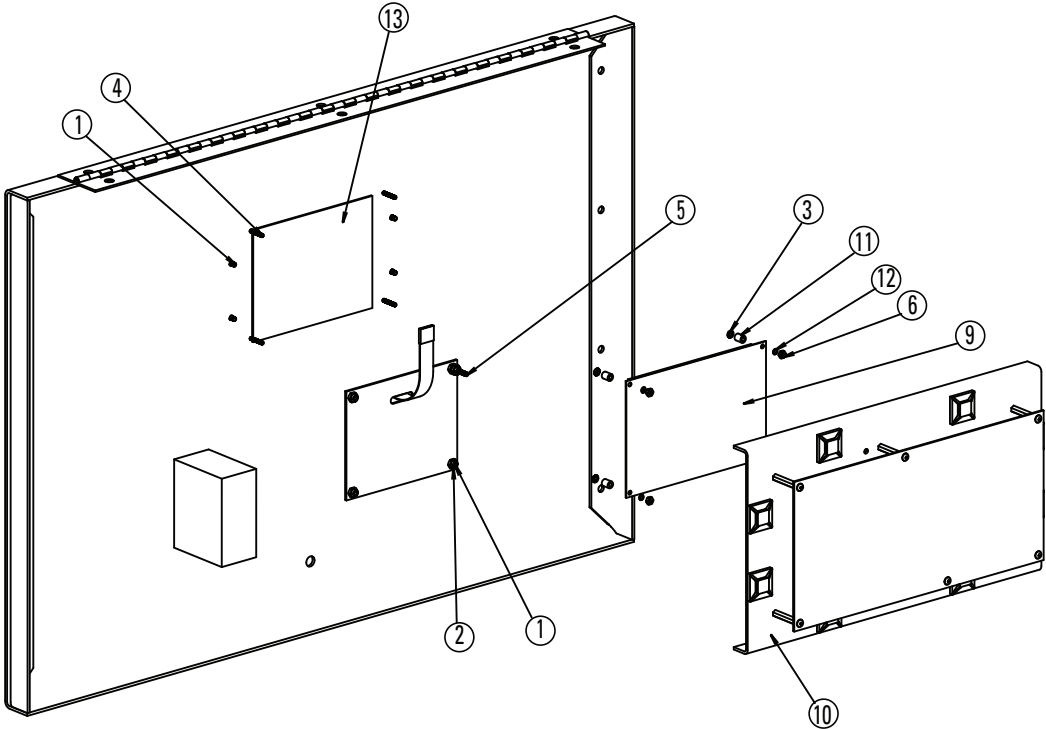
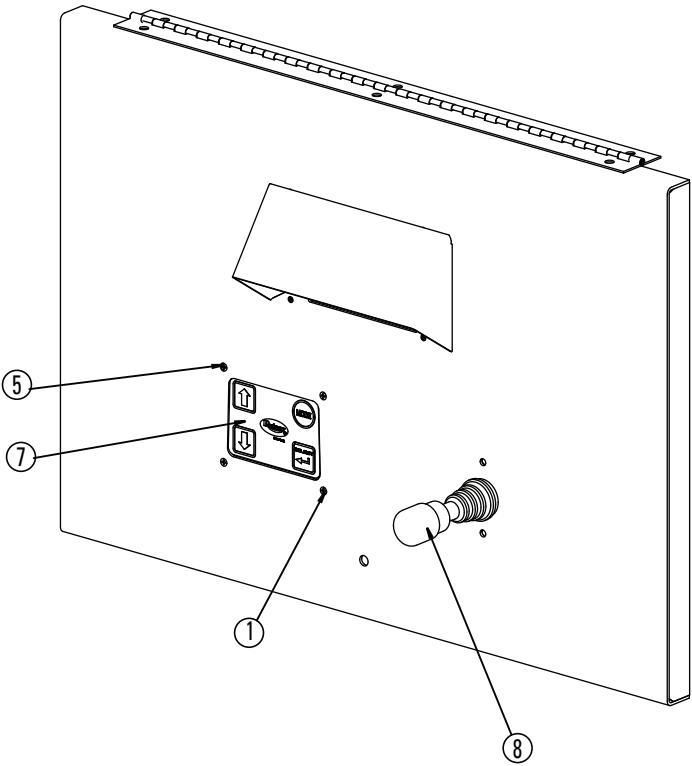


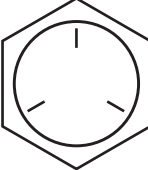
| LOWER BACK PANEL ASSEMBLY 2-POST | | | |
|----------------------------------|-----|----------|--|
| ITEM | QTY | PART NO. | DESCRIPTION |
| 1 | 8 | 40022 | #8-32NF x 1/2" Lg. SLOTTED PHMS, PLATED |
| 2 | 9 | 40036 | #10-32NF x 1/2" Lg. SLOTTED PHMS |
| 3 | 1 | AP00971 | GROUND LABEL (GRN) |
| 4 | 2 | AP01281 | DIODE - SURGE PROTECTION DIODE |
| 5 | 2 | MC110069 | RESISTOR ASSM. 230V |
| | | MC110070 | RESISTOR ASSM. 460V |
| 6 | 6 | MC130003 | FUSE TERMINAL BLOCK |
| 7 | 1 | MC130011 | DIN RAIL |
| 8 | 1 | MC130013 | CONTACTOR |
| 9 | 1 | MC130014 | CONTACTOR |
| 10 | 9 | MC130016 | TERMINAL BLOCK |
| 11 | 2 | MC130018 | AUX. CONTACTOR |
| 12 | 1 | MC130214 | LABEL, M1 |
| 13 | 1 | MC130027 | GROUND BAR |
| 14 | 6 | MC130064 | FUSE (NOT SHOWN, LOCATED INSIDE OF MC1300031) 600V 30A |
| | | MC130077 | FUSE (NOT SHOWN, LOCATED INSIDE OF MC1300031) 600V 15A |

| | | | |
|----|---|----------|---------------------------------|
| 15 | 1 | MC130215 | LABEL, M2 |
| 16 | 1 | MC130112 | LABEL, AM1 |
| 17 | 1 | MC130069 | LABEL, "VFD1" |
| 18 | 1 | MC130070 | LABEL, "VFD2" |
| 19 | 1 | MC130071 | LABEL, "CCMF" @ 30A |
| | | MC130090 | LABEL, "CCMF" @ 15A |
| 20 | | MC130010 | VFD, 230V, YASKAWA |
| | | MC130165 | VFD, 230V, OMRON |
| | | MC130166 | VFD, 460V, OMRON |
| | | MC130198 | VFD, 230V, V1000 |
| | | MC130199 | VFD, 460V, V1000 |
| 21 | 1 | MC130178 | DIN RAIL 7" |
| 22 | 1 | MC130179 | DIN RAIL 9" |
| 23 | 1 | NP693 | NAMEPLATE |
| 24 | 3 | XS130081 | GROUND BLOCK |
| 25 | 6 | XS130085 | END STOP |
| 26 | 9 | XS130094 | WIRE TIE |
| 27 | 1 | XS130119 | MARKER CARDS |
| 28 | 1 | MC130078 | MANUAL STARTER OVERLOAD AT 230V |
| | | MC130196 | MANUAL STARTER OVERLOAD AT 460V |

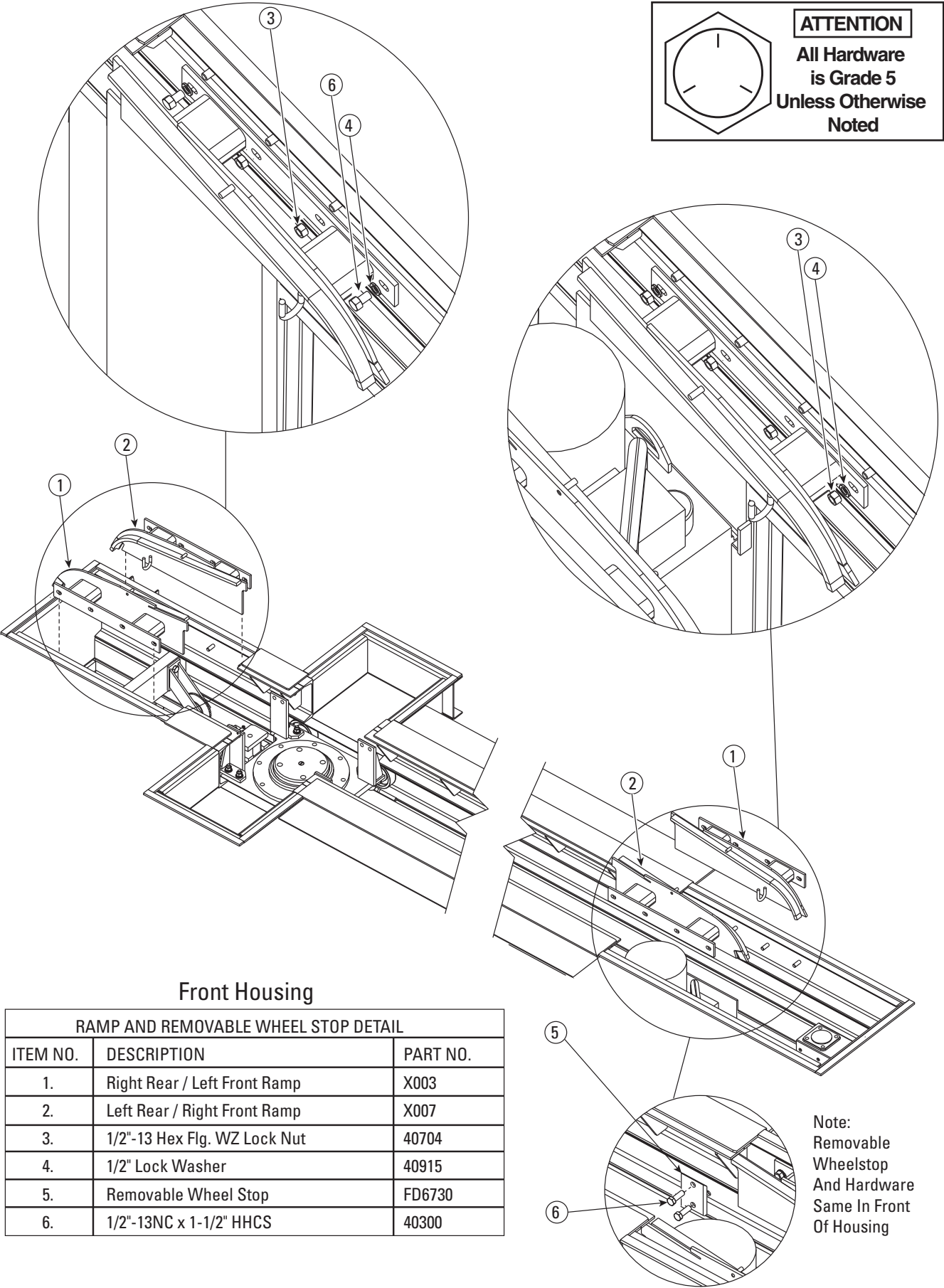


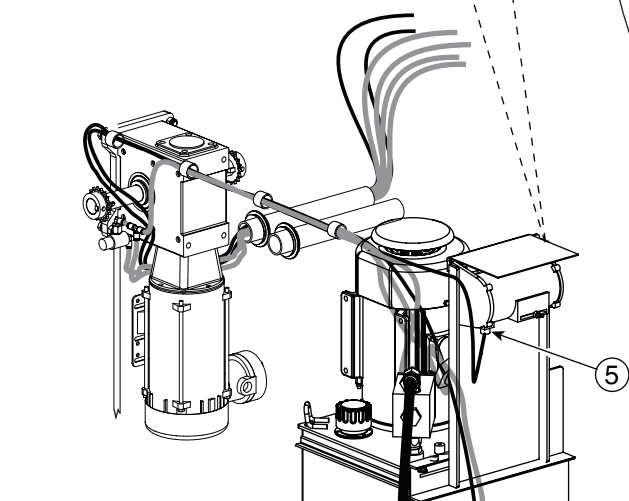
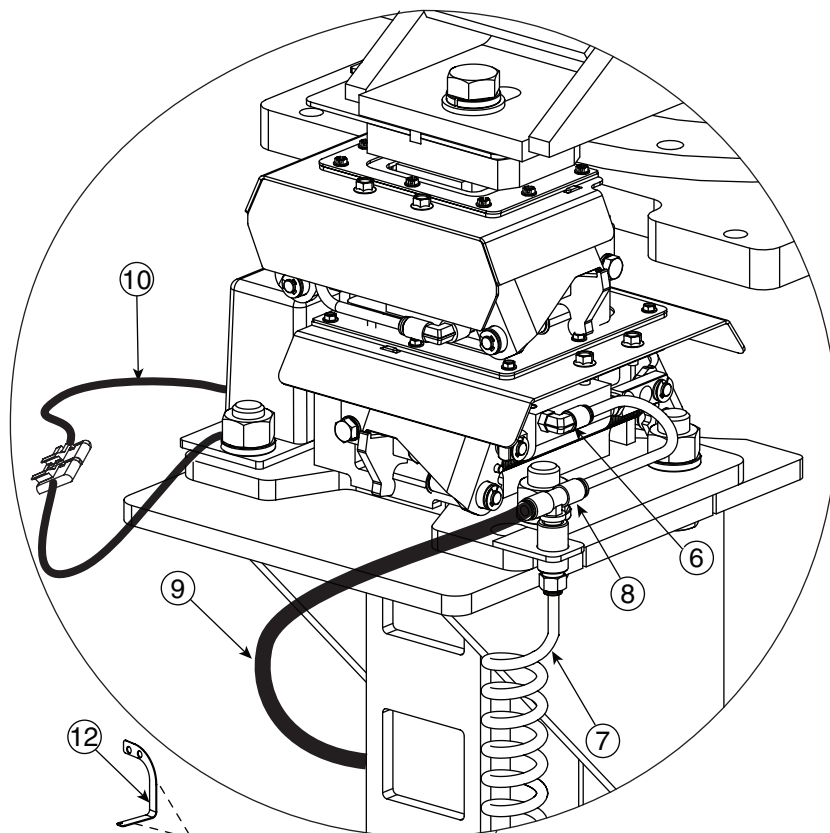
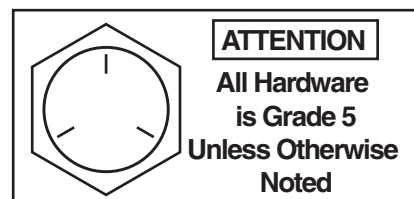
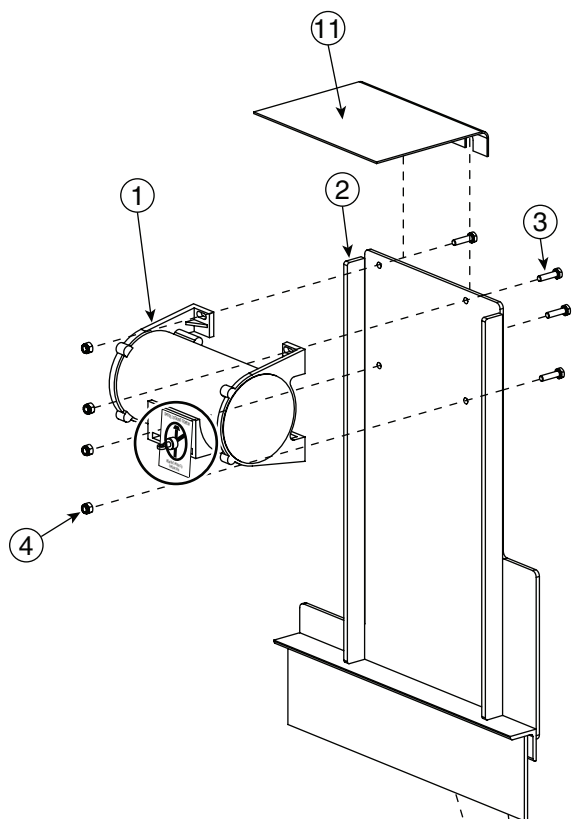
| MOD30 CABINET COVER ASSEMBLY 230V/460V/575V | | | |
|--|-----|-----------|---|
| ITEM | QTY | PART NO. | DESCRIPTION |
| 1 | 7 | 40185 | #6-32NC HEX x 3/8 PFHMS McMASTER-CARR #9177 A146 |
| 2 | 5 | 40638 | #6-32NC HEX NYLON INSERT LOCKNUT |
| 3 | 4 | 41466 | #4 EXT TOOTH LOCK WASH- ER |
| 4 | 4 | 41625 | #4-40NC HEX x 3/4 PFHMS McMASTER-CARR #91771 A113 |
| 5 | 1 | 41626 | #6-32NC HEX x 1 Lg. Mc- MASTER-CARR #91771A153 |
| 6 | 4 | AP00364 | NYLON NUT, #4-40 |
| 7 | 1 | FA7234-11 | MENU PAD |
| 8 | 1 | FA7234-12 | JOYSTICK |
| 9 | 1 | FA7236 | 5.7" LCD |
| 10 | 1 | MC110014 | PCB MOUNTING BOARD ASSEMBLY |
| 11 | 4 | MC130041 | NYLON SPACER |
| 12 | 4 | MC130065 | SHOULDER WASHER, TEF- LON |
| 13 | 1 | XS130075 | LENS |



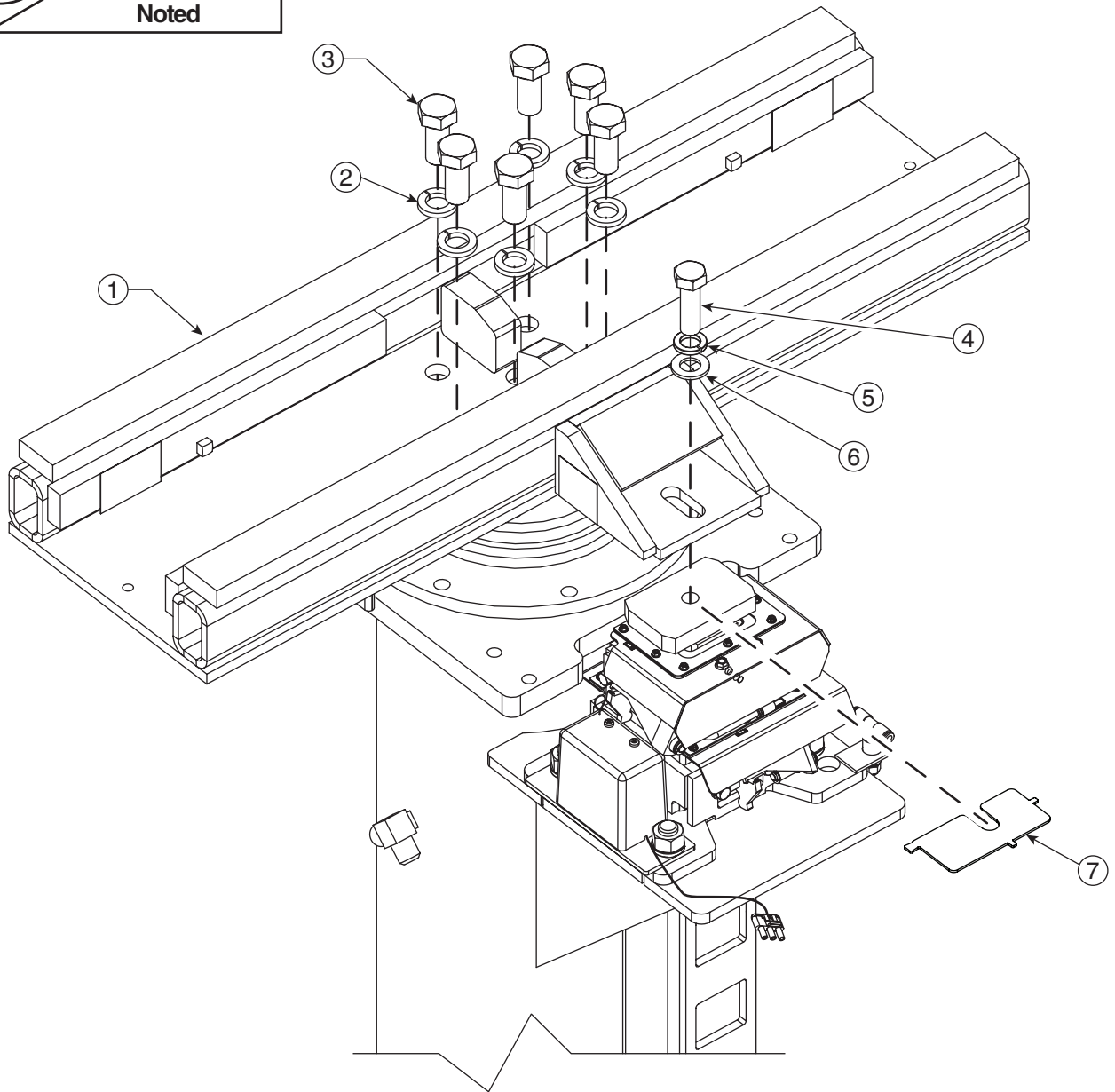
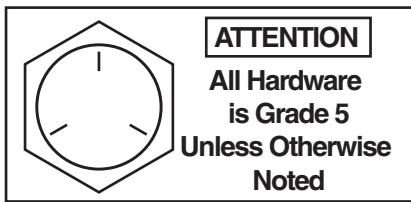


ATTENTION
 All Hardware
 is Grade 5
 Unless Otherwise
 Noted

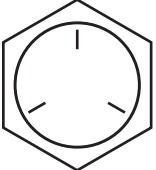




| POSITION SENSOR, CABLES, AIR LINES, AND FITTINGS | | |
|--|---------------------------------|-----------|
| ITEM NO. | DESCRIPTION | PART NO. |
| 1. | Position Sensor | FA2412 |
| 2. | Position Sensor Bracket | FA2454 |
| 3. | 1/4"-20NC x 1" HHCS | 40108 |
| 4. | 1/4"-20NC Nylon Insert Lock Nut | 40642 |
| 5. | Position Sensor Cable 60' | FA2427 |
| 6. | Elbow | FC5224-39 |
| 7. | Recoil Hose | FA2420 |
| 8. | Union Tee | FC5225-46 |
| 9. | ParaFlex Tubing 60' | AP00430 |
| 10. | Rise Position Sensor Cable | FA2424 |
| 11. | Horizontal String Pot Cover | FA2454-5 |
| 12. | Horizontal Cable Mount | FA2454-3 |



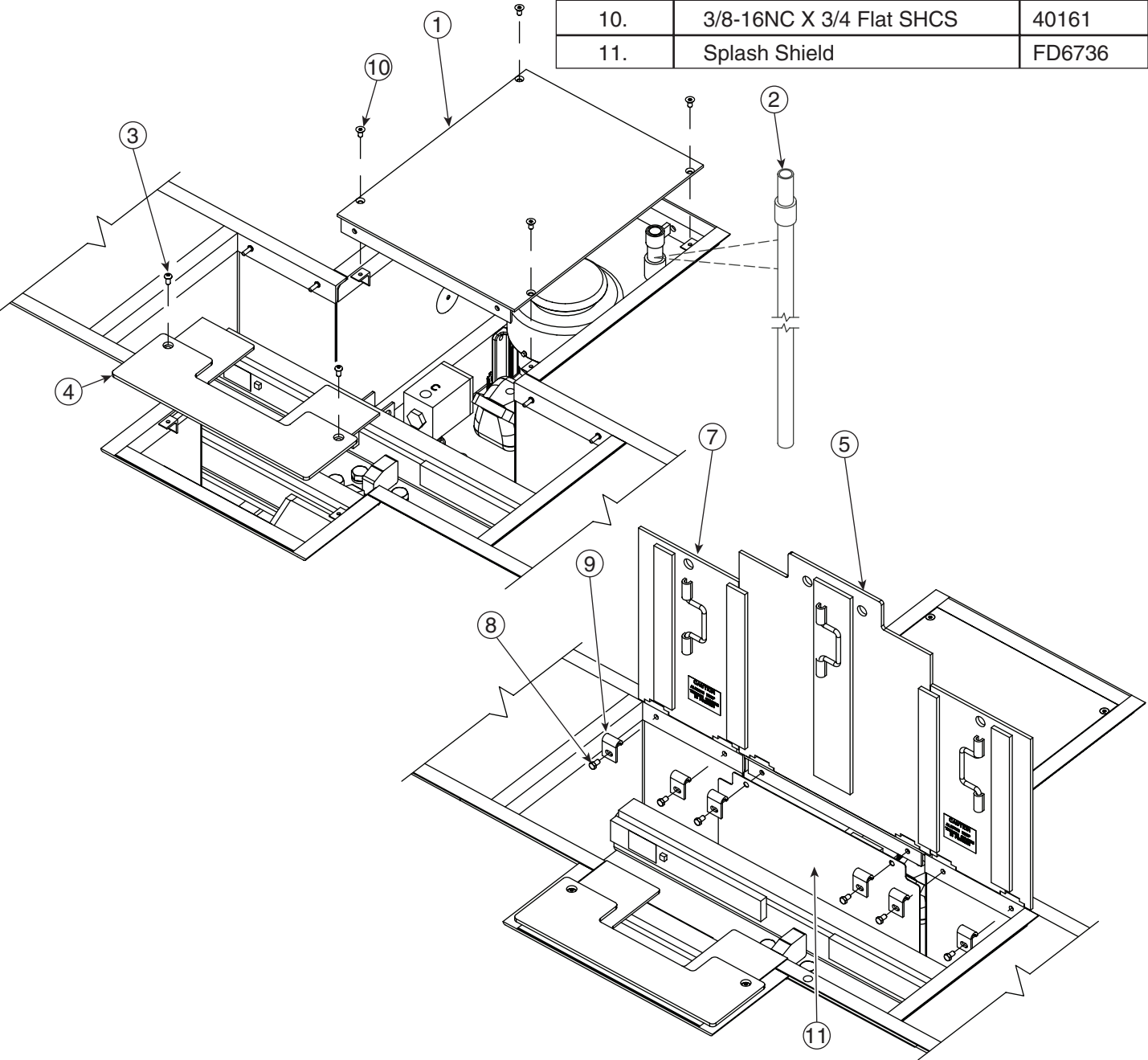
| 30,000 Lb. CAPACITY SADDLE DETAIL | | |
|-----------------------------------|----------------------------|----------|
| ITEM NO. | DESCRIPTION | PART NO. |
| 1. | 30,000 Lb. Cap. Saddle | FD2346 |
| | 30,000 Lb. Cap. Saddle | FD2347 |
| | 30,000 Lb. Cap. ULP Saddle | FD2377 |
| 2. | 7/8" Lock Washer | 41071 |
| 3. | 7/8"-9NC x 2" HHCS GRD. 8 | 40494 |
| | 7/8" x 2-3/4" SHCS GRD. 8 | FD2377-8 |
| 4. | 3/4"-10NC x 2-1/2" HHCS | 40471 |
| 5. | 3/4" Lock Washer | 40917 |
| 6. | 3/4" Flat Washer | 41021 |
| 7. | Vertical Cable Mount | FA2455 |



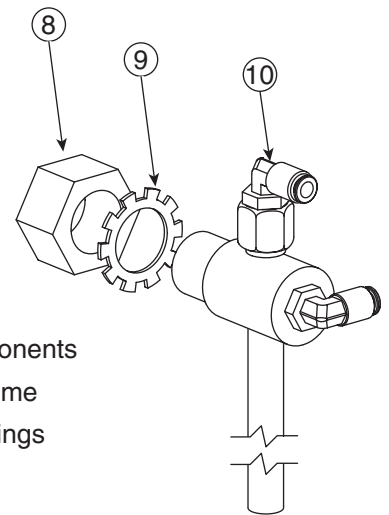
ATTENTION

All Hardware
is Grade 5
Unless Otherwise
Noted

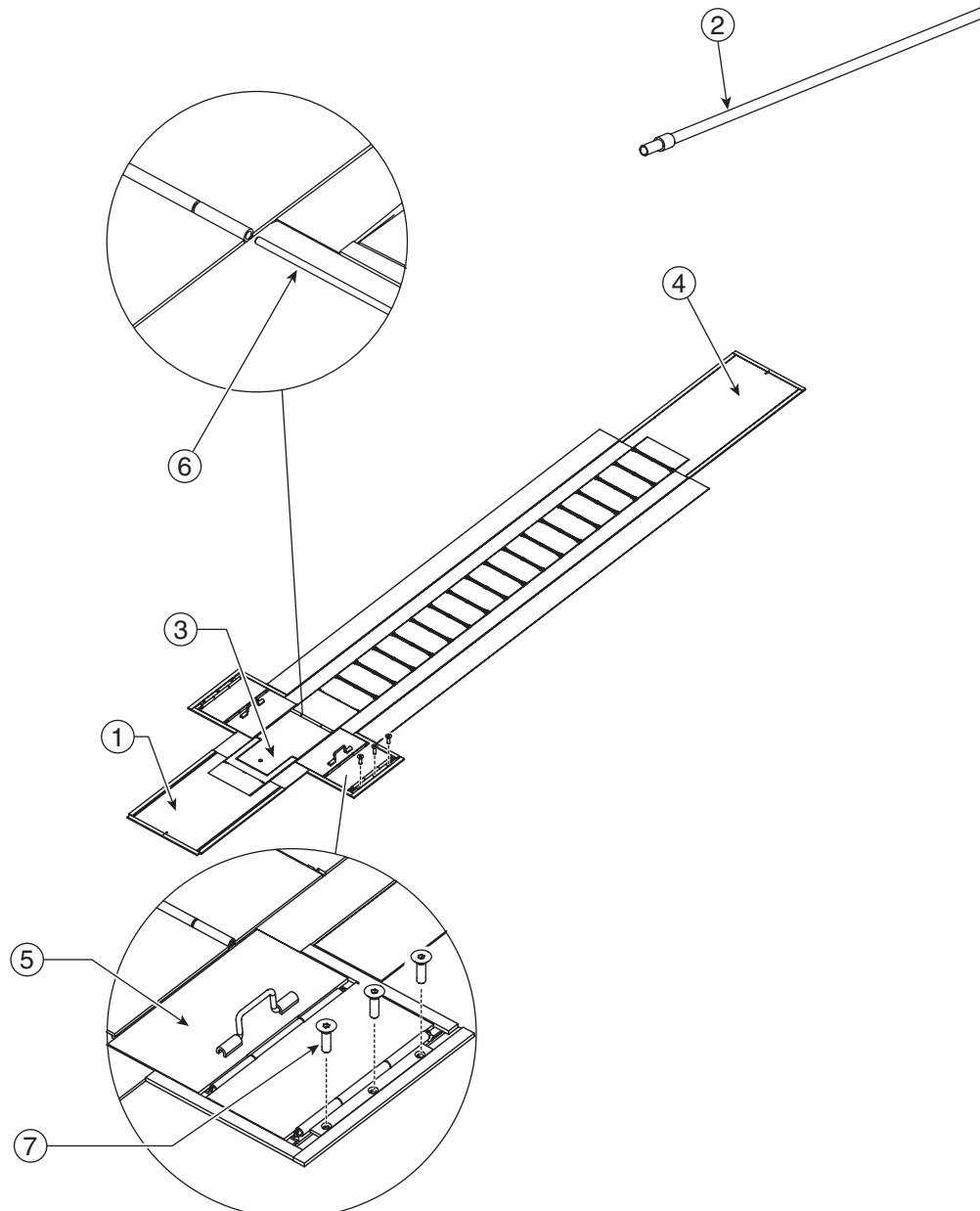
| REAR HOUSING PLATE AND HARDWARE DETAIL | | |
|--|------------------------------|-----------|
| ITEM NO. | DESCRIPTION | PART NO. |
| 1. | Front Filler Plate | FD6686 |
| 2. | Clean Out Tube | FD6648-27 |
| 3. | 3/8"-16NC x 3/4" HX SC BHDCS | 40157 |
| 4. | Rear Filler Plate | FD6648-17 |
| 5. | Center Cover | FD6648-21 |
| 6. | Left End Plate 42" | FD6619 |
| | Left End Plate 48" | FD6689 |
| | Left End Plate 50" | FD6701 |
| 7. | Right End Plate 42" | FD6618 |
| | Right End Plate 48" | FD6688 |
| | Right End Plate 50" | FD6700 |
| 8. | 3/8"-16NC X 5/8" HHCS Gr8 | 40155 |
| 9. | Door Retainer | FF634-7 |
| 10. | 3/8-16NC X 3/4 Flat SHCS | 40161 |
| 11. | Splash Shield | FD6736 |



| FRONT HOUSING PLATE AND HARDWARE DETAIL | | |
|---|--------------------------------|----------|
| ITEM NO. | DESCRIPTION | PART NO. |
| 1. | Front Floating Cover Plate | FD6709 |
| 2. | Clean Out Tube | FD6685 |
| 3. | Center Cover Plate | FD6734 |
| 4. | Rear Floating Cover Plate | FD6710 |
| 5. | Pocket Cover Plate (Std.) 46" | FD6671 |
| | Pocket Cover Plate (Wide) 51" | FD6702 |
| 6. | Hinge Pin | X019 |
| 7. | 3/8"-16 x 3/4" C-sunk G8 FSHCS | 41615 |
| LDS (LIQUID DETECTION SYSTEM) DETAIL | | |
| 8. | 1"-8NC Plastic Hex Nut | 40749 |
| 9. | 1" EXT Tooth Lock Washer | 41106 |
| 10. | Valve Assembly For LDS | FA2422 |

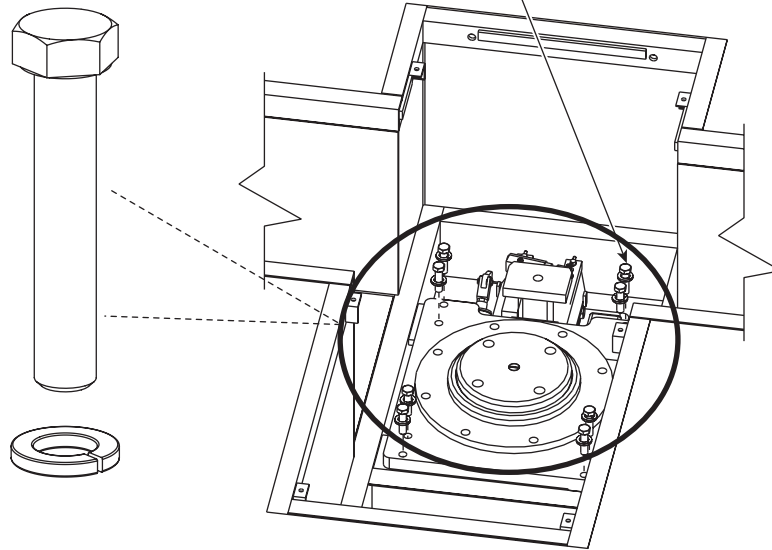


LDS Components
Are The Same
In All Housings



Install (8)
1/2"-13NC x 2-3/4" (Part Number 40356) HHCS And Lock Washers
Grade 8 High Strength

DO NOT EXCEED
1/8"
In Shims
Torque Bolts To
60 ft. lb.
(Oiled)



IMPORTANT Labels Placed On The Lift And Control Panel Display Information Concerning Safety, Operation, And Maintenance. Labels Must Be Replaced As They Become Faded And Worn. They Can Be Ordered By The Part Number Listed On The Label. Labels For This Lift Are Displayed In The Following Pages For Ease Of Ordering.



Part Number

NP689 Rev -

Intrinsically Safe Circuit

Provides Intrinsically Safe Circuit
Extensions For Use In Class I, Div. 1, Group D
Hazardous (Classified) Locations
When Connected Per Control Panel
Drawing No. WD039

NP714 Rev. A



! WARNING

This unit is supplied by more than one source of energy. Be sure to disconnect all energy sources at main power supply using appropriate lockout/tagout procedures. Before servicing this control panel the lift **MUST** be lowered. Only allow qualified lift service personnel to service control panel.

NP715 Rev -

CAUTION

**SET THERMAL OVERLOAD
PROTECTION TO PROPER
SETTING FOR OPERATING
VOLTAGE.**

NP693 Rev -

DANGER

**Always keep stop bolts
securely in place
at all times.**

NP678 REV -

ROTARY LIFT



NP738

CAPACITY

**30,000 LBS.
(13,608 Kg.)**

NP337 Rev. A

CAPACITY

**15,000 LBS. EACH
(6804 Kg. EACH)**

**See saddle for maximum
capacity rating**

NP680 Rev. A

CAUTION

**ALWAYS KEEP
TRENCH COVERS
IN POSITION.**

NP683 REV-

SAFETY INSTRUCTIONS: Read and heed all WARNING, CAUTION and SAFETY INSTRUCTION labels on lift.
OPERATING INSTRUCTIONS: Only Authorized Personnel Are to Operate Lift. Before operating lift, read Operation and Maintenance Manual and Safety documents supplied with lift.

Before loading: Inspect lift to assure it is in good operating condition. See Operation and Maintenance Manual for details.

1. Lift must be fully lowered and service bay clear of all personnel and/or other obstructions before vehicle is brought on lift.
 2. It will be necessary to open the front and rear housing doors before positioning vehicle over the lift. Position lift saddles and adapters to provide unobstructed entrance of vehicle onto lift.
 3. Spotting: Position vehicle centered laterally over the lift jacks with rear wheels centered in wheel dishes.
- Adjust adapters as needed to engage recommended lift point. Auxiliary adapters may be required.

⚠WARNING Before attempting to lift vehicle, be sure that:

- Vehicle individual axle weight does not exceed capacity shown on saddle.
- Adapters are in secure contact with vehicle manufacturer's recommended lift points.
- Adequate overhead clearance is provided to raise vehicle to desired height.

2. TO RAISE LIFT:

- Press Up or Down Button to reach appropriate UP/DOWN screen.
- Pull up on inter-lock to release joystick and shift joystick UP to raise.
- Continue to raise vehicle to desired height. Always watch vehicle.

Do Not go under vehicle unless all adapters are in secure contact at vehicle manufacturer's recommended lift points.

While using lift, avoid excessive rocking of vehicle while on lift.

⚠IMPORTANT Close housing doors once lift is raised.

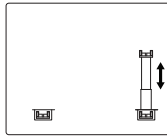
3. TO LOWER LIFT:

- Before lowering lift, remove all obstacles from under vehicle and lift. Ensure personnel are not in lift area.
- Open housing doors.
- Ensure UP/DOWN ALL screen is active. Press Up or Down Button if required.
- Pull up on inter-lock to release joystick and shift joystick DOWN to lower.
- While lowering vehicle, remain clear of lift and always watch vehicle.
 - Lower all jacks to desired height. Jacks will stop at FLR setting.
 - Return saddle/adapters to recess and housing. Always provide an unobstructed exit before removing vehicle from lift area.

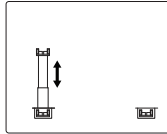
NOTE: If one jack does not lower, raise lift until all locks are fully disengaged, then follow lowering procedure.

⚠IMPORTANT Close housing doors once vehicle is removed from lift.

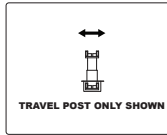
If lift is not operating properly, DO NOT use until adjustments or repairs are made by qualified lift service personnel.



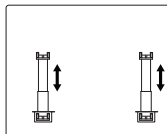
UP/DOWN STATIONARY ON



UP/DOWN MOVEABLE ON



FWD/BACK MOVEABLE ON



UP/DOWN ALL

Rotary Lift/ A **DOVER** COMPANY Madison, IN 47260 (800)445-5438

© March 2010 by Rotary Lift. All rights reserved.

NP882
Rev. A 03/31/2010

Two Post Operations Decal

SAFETY INSTRUCTIONS: Read and heed all WARNING, CAUTION and SAFETY INSTRUCTION labels on lift.
OPERATING INSTRUCTIONS: Only Authorized Personnel Are to Operate Lift. Before operating lift, read Operation and Maintenance Manual and Safety documents supplied with lift.

Before loading: Inspect lift to assure it is in good operating condition. See Operation and Maintenance Manual for details.

1. Lift must be fully lowered and service bay clear of all personnel and/or other obstructions before vehicle is brought on lift.
 2. It will be necessary to open the front and rear housing doors before positioning vehicle over the lift. Position lift saddles and adapters to provide unobstructed entrance of vehicle onto lift.
 3. Spotting: Position vehicle centered laterally over the lift jacks with rear wheels centered in wheel dishes.
- Adjust adapters as needed to engage recommended lift point. Auxiliary adapters may be required.

⚠WARNING Before attempting to lift vehicle, be sure that:

- Vehicle individual axle weight does not exceed capacity shown on saddle.
- Adapters are in secure contact with vehicle manufacturer's recommended lift points.
- Adequate overhead clearance is provided to raise vehicle to desired height.

2. TO RAISE LIFT:

- Press Up or Down Button to reach appropriate UP/DOWN screen.
- Pull up on inter-lock to release joystick and shift joystick UP to raise.
- Continue to raise vehicle to desired height. Always watch vehicle.

Do Not go under vehicle unless all adapters are in secure contact at vehicle manufacturer's recommended lift points.

While using lift, avoid excessive rocking of vehicle while on lift.

⚠IMPORTANT Close housing doors once lift is raised.

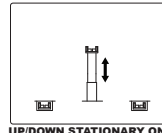
3. TO LOWER LIFT:

- Before lowering lift, remove all obstacles from under vehicle and lift. Ensure personnel are not in lift area.
- Open housing doors.
- Ensure UP/DOWN ALL screen is active. Press Up or Down Button if required.
- Pull up on inter-lock to release joystick and shift joystick DOWN to lower.
- While lowering vehicle, remain clear of lift and always watch vehicle.
- Lower all jacks to desired height. Jacks will stop at FLR setting.
- Return saddle/adapters to recess and housing. Always provide an unobstructed exit before removing vehicle from lift area.

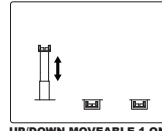
NOTE: If one jack does not lower, raise lift until all locks are fully disengaged, then follow lowering procedure.

⚠IMPORTANT Close housing doors once vehicle is removed from lift.

If lift is not operating properly, DO NOT use until adjustments or repairs are made by qualified lift service personnel.



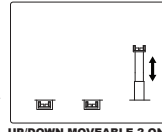
UP/DOWN STATIONARY ON



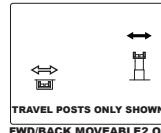
UP/DOWN MOVEABLE 1 ON



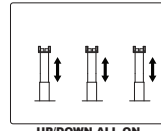
FWD/BACK MOVEABLE 1 ON



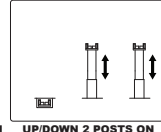
UP/DOWN MOVEABLE 2 ON



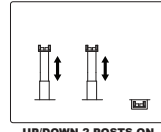
FWD/BACK MOVEABLE 2 ON



UP/DOWN ALL ON



UP/DOWN 2 POSTS ON



UP/DOWN 2 POSTS ON

Rotary Lift/ A **DOVER** COMPANY Madison, IN 47260 (800)445-5438

© March 2010 by Rotary Lift. All rights reserved.

NP883
Rev. A 03/31/2010

Three Post Operations Decal

| Lift Model | Electrical Service | Current Required | "X" Mark Required |
|------------|--------------------|------------------|-------------------|
| MC2B-208V | 208V, 3Ph., 60Hz. | 38 Amp. | |
| MC2B-230V | 230V, 3Ph., 60Hz. | 34 Amp. | |
| MC2B-460V | 460V, 3Ph., 60Hz. | 18 Amp. | |
| MC2B-575V | 575V, 3Ph., 60Hz. | 14 Amp. | |
| MC3B-208V | 208V, 3Ph., 60Hz. | 57 Amp. | |
| MC3B-230V | 230V, 3Ph., 60Hz. | 51 Amp. | |
| MC3B-460V | 460V, 3Ph., 60Hz. | 27 Amp. | |
| MC3B-575V | 575V, 3Ph., 60Hz. | 21 Amp. | |
| NP688 | | | |

! CAUTION

FOR CONTINUED PROTECTION AGAINST RISK OF FIRE, REPLACE ONLY WITH SAME TYPE FUSES AS SPECIFIED IN SYSTEM WIRING DIAGRAM.

NP692 Rev -

! CAUTION

INTRINSICALLY SAFE WIRING.

NP690 Rev -

! CAUTION

IF CONNECTED TO A CIRCUIT, PROTECTED BY FUSES, USE TIME-DELAY FUSES WITH THIS EQUIPMENT.

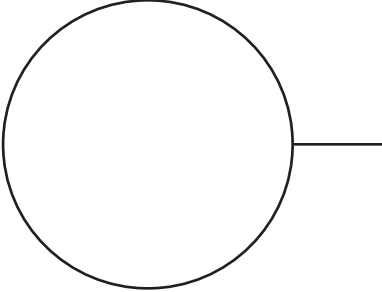
NP691 Rev -

! CAUTION

AIR SUPPLIED TO LIFT MUST BE BETWEEN 100PSI (7 BARS) AND 120PSI (8 BARS)

NP694 Rev -

Up/Fwd



Down/Back

NP695 Rev -



ROTARY LIFT
INTRINSICALLY SAFE POSITION SENSING SYSTEM
INTRINSICALLY SAFE SENSOR (STRING POTENTIOMETER
FA2411)
CLASS I, DIVISION 1, GROUP D T4
WARNING: SUBSTITUTION OF COMPONENTS MAY
IMPAIR INTRINSIC SAFETY
READ MANUAL BEFORE INSTALLATION/OPERATION



SECURITE INTRINSEQUE
ADVERTISSEMENT: LA SUBSTITUTION DE COMPOSANTS
PEUT COMPROMETTRE LA SECURITE INTRINSEQUE
NP684 REV-

NP370 Located On The Front Of The Control Panel.
There Are 2 Of Them Displayed Front And Back.

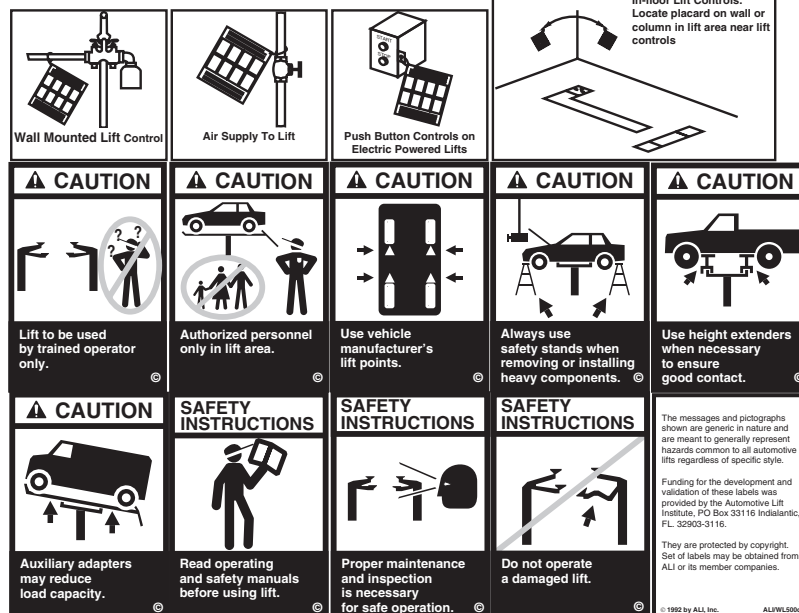
SAFETY WARNING LABELS FOR INGROUND LIFTS

Lift Owner/User Responsibilities:

- A. This Safety Warning placard **SHALL** be displayed in a conspicuous location in the lift area.
B. Use one of the mounting arrangements illustrated on back of this placard.
C. These Safety Warning labels supplement other documents supplied with the lift.
D. Be certain all lift operators read and understand these labels, operating instructions and other safety related information supplied with the lift.



TYPICAL PLACARD LOCATIONS



INSTALLATION DATE: _____

ROTARY LIFT MOD30 PREVENTIVE MAINTENANCE SCHEDULE
INTERVAL IN MONTHS (REPEAT AFTER 2 YEARS)

PERIODIC INSPECTION:

MECHANICAL LOCKS

SENSOR CABLES

HYDRAULIC SYSTEM/OIL LEVEL

HOSE & FITTINGS, LEAKS

CYLINDER SEALS

STRUCTURAL SYSTEM:

SADDLE BOLTS (150 FT-LBS)

LOCKING LEG BOLTS (100 FT-LBS)

STATIONARY JACK TO FRAME (60 FT-LBS)

AXLE U-BOLTS (35 FT-LBS)

ADAPTER STOP BOLTS

INSPECT SADDLE/ADAPTERS FOR DAMAGE

PERIODIC MAINTENANCE:

CHAIN AND SPROCKETS

MOVING COVER PLATE GUIDES

ROLLER CHANNEL

HYDRAULIC OIL

HYDRAULIC OIL FILTER REPLACEMENT

DRAIN CONDENSATION BOWL ON FRL

CHANGE HYDRAULIC OIL EVERY 5 YEARS

EVERY SEVEN DAYS

NOTE 1: A=ACTIVATE, G=GREASE, I=INSPECT, C=CLEAN, L=LUBRICATE, R=REPLACE

NOTE 2: REPEAT INTERVAL AFTER 2 YEARS (*=REQUIRED ONLY FOR FIRST 6 MONTHS).

OIL: AW 32

GREASE: MULTI-PURPOSE EXTREME PRESSURE



If you are not completely familiar with automotive lift maintenance procedures, STOP: contact factory for instructions. Permit only qualified personnel to perform maintenance on this equipment.

To insure your safety, and to keep your lift operating properly, you MUST follow this maintenance schedule.

NP879 Rev A

Notes:

Rotary World Headquarters

2700 Lanier Drive
Madison, IN 47250, USA
www.rotarylif.com

North America Contact Information

Tech. Support: p 800.445.5438
f 800.578.5438
e userlink@rotarylif.com
Sales: p 800.640.5438
f 800.578.5438
e userlink@rotarylif.com

World Wide Contact Information

World Headquarters/USA: 1.812.273.1622
Canada: 1.905.812.9920
European Headquarters/Germany: +49.771.9233.0
United Kingdom: +44.178.747.7711
Australasia: +60.3.7660.0285
Latin America / Caribbean: +54.3488.431.608
Middle East / Northern Africa: +49.771.9233.0

© Rotary®, Printed in U.S.A., All Rights Reserved. Unless otherwise indicated, ROTARY, DOVER and all other trademarks are property of Dover Corporation and its affiliates.



A **DOVER** COMPANY

