

# **PARTS LIST**

## **INDUSTRIAL HOSE REELS**

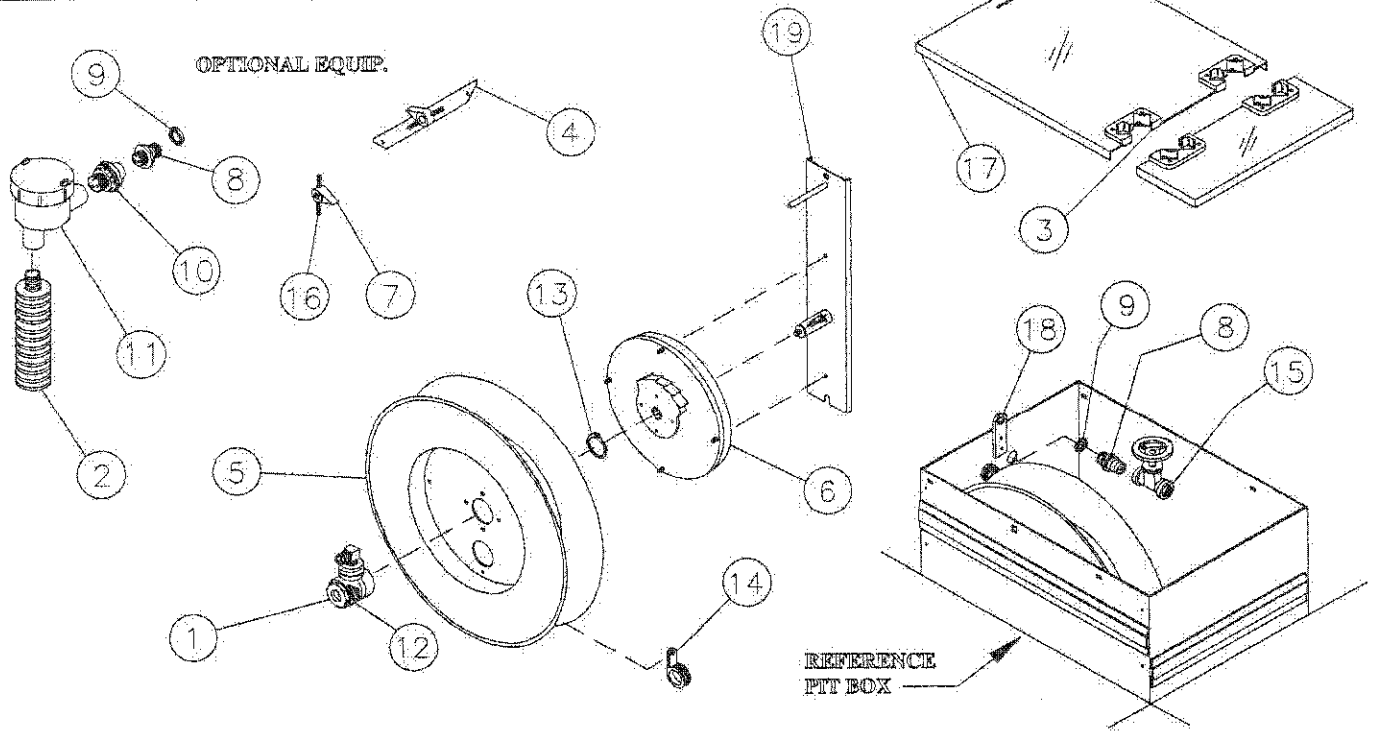


**DURO MANUFACTURING, INC.**

3505 Arrowhead Drive • Carson City, Nevada 89706  
(702) 687-8866 • FAX (702) 687-8877



# UNDERGROUND SERIES 500 & 600

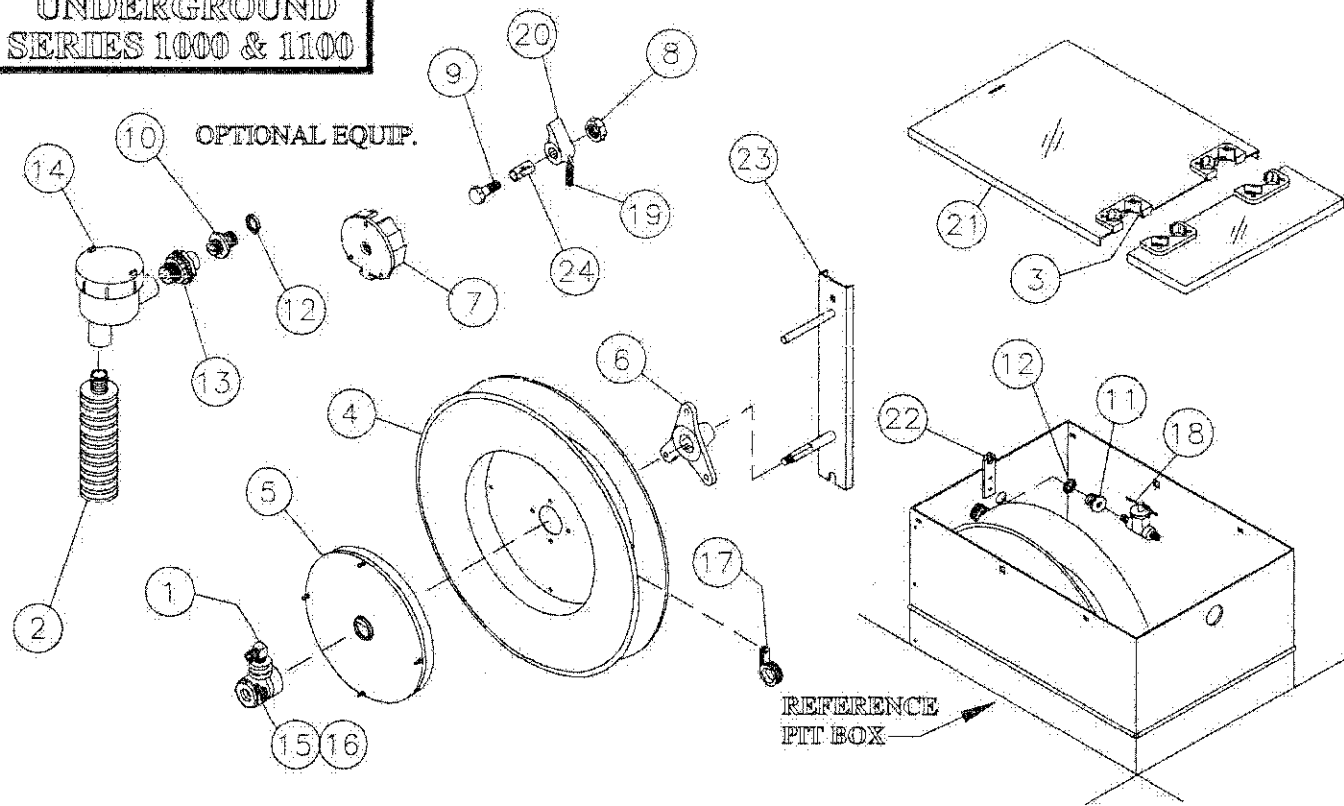


## PARTS LIST

\* MODEL NUMBER MUST BE KNOWN TO CLARIFY PART NUMBER  
USE HOSE & CORD CATALOG FOR REPLACEMENTS

NO.	PART#	DESCRIPTION	MODEL	NO.	PART#	DESCRIPTION	MODEL
1*	SA-02	SWIVEL JOINT 3/8	501,502,601,602	18	064-11	LOCK HASP	ALL
	SA-03	SWIVEL JOINT 1/2	503,504,603,604	19	071-07	HANGER BRACKET	ALL
2	SA-07	HEATER ASSEMBLY	OPTION	20			
3	SA-11	HOSE GUIDE with ROLLERS	ALL	21			
4	SA-23	LOCKING BAR ASSEMBLY	OPTION	22			
5	SA-59	REEL SPOOL 22"	ALL	23			
6*	SS-342	MOTOR SPRING & ARBOR	501,601	24			
SPECIFY L. OR R.	SS-372	MOTOR SPRING & ARBOR	502,602	25			
	SS-442	MOTOR SPRING & ARBOR	503,504,603,604	26			
7	055-12	LOCKING CAM	OPTION	27			
8	018-34	BUSHING 1/2 x 1/2	ALL	28			
9	018-36	NUT 1/2	ALL	NOTES:			
10	019-17	UNION	OPTION				
11	019-18	EXPLOSION PROOF BOX	OPTION				
12	K21-03	O-RING KIT	3/8 & 1/2 SWIVEL				
13	022-04	RETAINING RING	ALL				
14	023-02	HOSE CLAMP	ALL				
15	026-15	BRASS SHUT OFF VALVE	ALL				
16	031-01	LOCKING CAM SPRING	OPTION				
17*	064-02	PIT BOX LID-DOUBLE	501,502,503,504				
	064-04	PIT BOX LID-SINGLE	601,602,603,604				

# UNDERGROUND SERIES 1000 & 1100

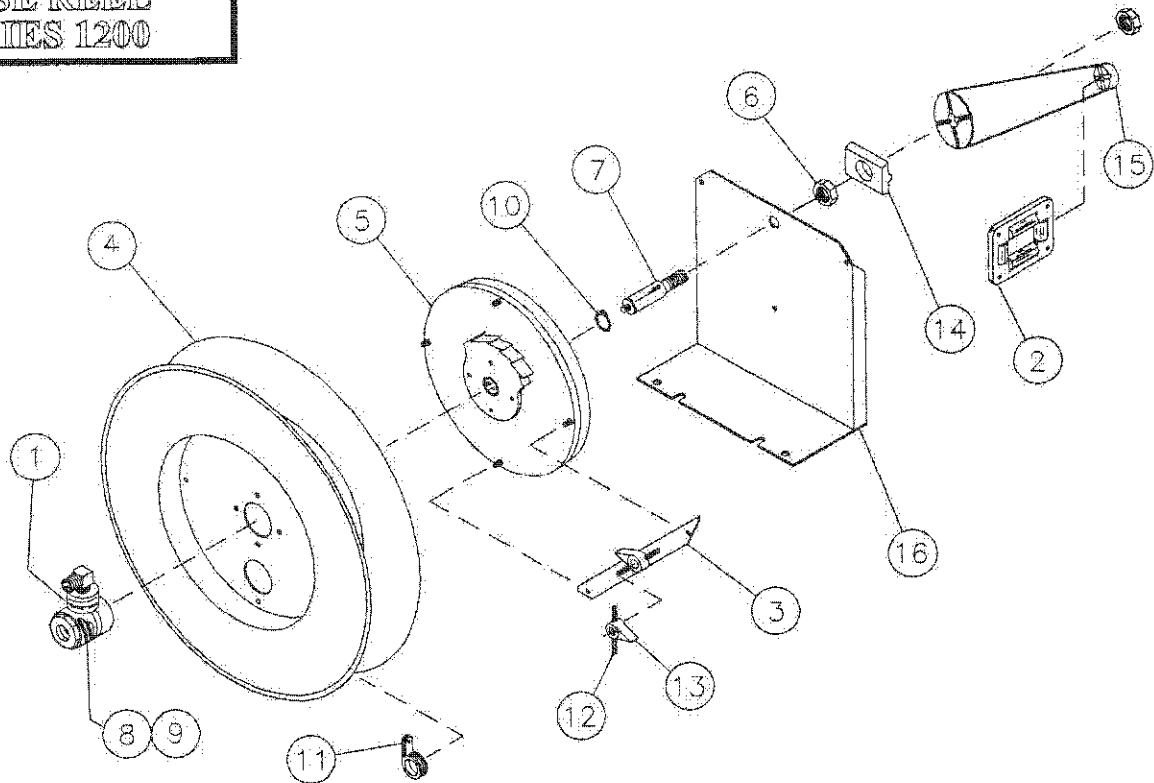


## PARTS LIST

\* MODEL NUMBER MUST BE KNOWN TO CLARIFY PART NUMBER  
USE HOSE & CORD CATALOG FOR REPLACEMENTS

NO.	PART#	DESCRIPTION	MODEL	NO.	PART#	DESCRIPTION	MODEL
1*	SA-01	SWIVEL JOINT 1/4	1001,1002,1003,1004 1005,1006,1007,1008 1009,1010,1101,1102 1103,1104	17	023-02	HOSE CLAMP	ALL
	SA-02	SWIVEL JOINT 3/8	1007,1008,1009,1010 1105,1106,1107	18	026-12	BRASS SHUT OFF VALVE	ALL
	SA-03	SWIVEL JOINT 1/2	1108	19	031-01	LOCKING CAM SPRING	OPTION
2	SA-07	HEATER ASSEMBLY	OPTION	20	055-17	LOCKING CAM	OPTION
3	SA-11	HOSE GUIDE with ROLLERS	ALL	21*	064-10	PIT BOX LID - DOUBLE	1001,1002,1003,1004 1005,1006,1007,1008 1009,1010
4	SA-49	REEL SPOOL 14" ALUMN.	ALL		064-14	PIT BOX LID - SINGLE	1101,1102,1103,1104 1105,1106,1107,1108
5*	SS-101	MOTOR SPRING ASSEMBLY	1001,1002,1101,1102 1105,1108	22	064-11	LOCK HASP	ALL
	SS-111	MOTOR SPRING ASSEMBLY	1003,1004,1007,1008 1009,1103,1106,1107	23	071-08	HANGER BRACKET	ALL
	SS-121	MOTOR SPRING ASSEMBLY	1005,1006,1010,1104	24	091-02	SPACER	OPTION
6	F-55-08	BEARING HUB	ALL	25			
7	F-55-20	BEARING HUB - LOCKING	OPTION	NOTES:			
8	006-01	3/8 KEPS NUT	OPTION				
9	006-07	3/8 x 1 1/2 CS	OPTION				
10	018-34	BUSHING 1/2 x 1/2	OPTION				
11	018-35	BUSHING 1/2 x 1/4	ALL				
12	018-36	NUT 1/2	ALL				
13	019-17	UNION	OPTION				
14	019-18	EXPLOSION PROOF BOX	OPTION				
15	K21-01	O-RING KIT	1/4 SWIVEL				
16	K21-03	O-RING KIT	3/8 & 1/2 SWIVEL				

# HOSE REEL SERIES 1200

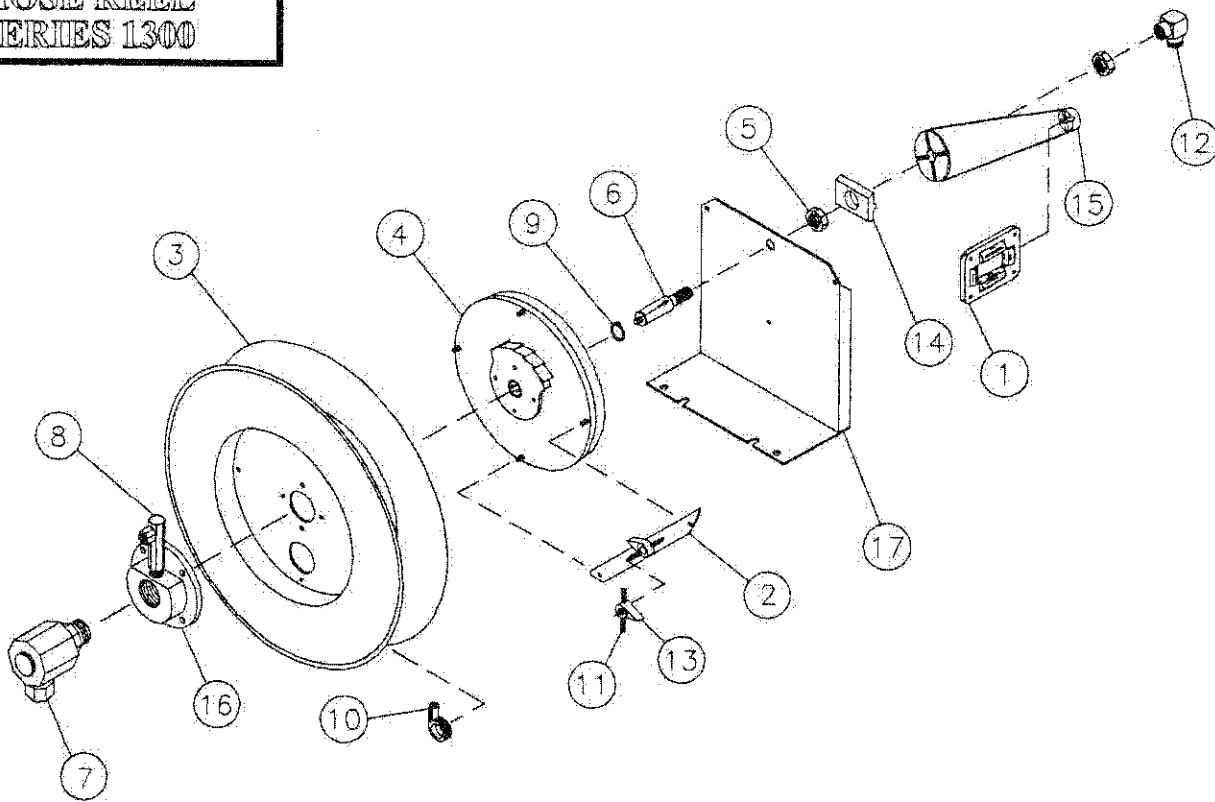


## PARTS LIST

\* MODEL NUMBER MUST BE KNOWN TO CLARIFY PART NUMBER  
USE HOSE & CORD CATALOG FOR REPLACEMENTS

NO.	PART#	DESCRIPTION	MODEL	NO.	PART#	DESCRIPTION	MODEL
1*	SA-01	SWIVEL JOINT 1/4	1201,1202,1203,1204	13	055-12	LOCKING CAM	ALL
	SA-02	SWIVEL JOINT 3/8	1209,1210,1211,1212 1216,1217,1218	14	055-13	GUIDE ARM LOCK	ALL
	SA-03	SWIVEL JOINT 1/2	1213,1214,1215,1219 1220,1221	15	055-14	ROLLER GUIDE ARM	ALL
2	SA-12	HOSE GUIDE with ROLLERS	ALL	16*	071-09	MOUNTING BASE (SMALL)	1201,1202,1203,1209 1213,1216,1217,1218 1219,1220
3	SA-23	LOCKING BAR ASSEMBLY	ALL		071-10	MOUNTING BASE (LARGE)	1204,1210,1211,1212 1214,1215,1221
4*	SA-58	REEL SPOOL 20"	1201,1202,1203,1209 1213,1216,1217,1218 1219,1220	17			
	SA-59	REEL SPOOL 22"	1204,1210,1211,1212 1214,1215,1221	18			
5*	SS-342	MOTOR SPRING AND ARBOR ASSEMBLY	1201,1209	19			
	SS-352		1202,1210	20			
	SS-362		1203,1211	22			
	SS-372		1204,1212	NOTES:			
	SS-402		1213,1216,1217,1219 1220				
	SS-442		1214,1215,1218,1221				
6	009-01	3/4-10 HEX NUT (2 REQ)	ALL				
7	018-03	AXLE	ALL				
8	K21-01	O-RING KIT	1/4 SWIVEL				
9	K21-03	O-RING KIT	3/8 & 1/2 SWIVEL				
10	022-04	RETAINING RING	ALL				
11	023-02	HOSE CLAMP	ALL				
12	031-01	LOCKING CAM SPRING	ALL				

# HOSE REEL SERIES 1300

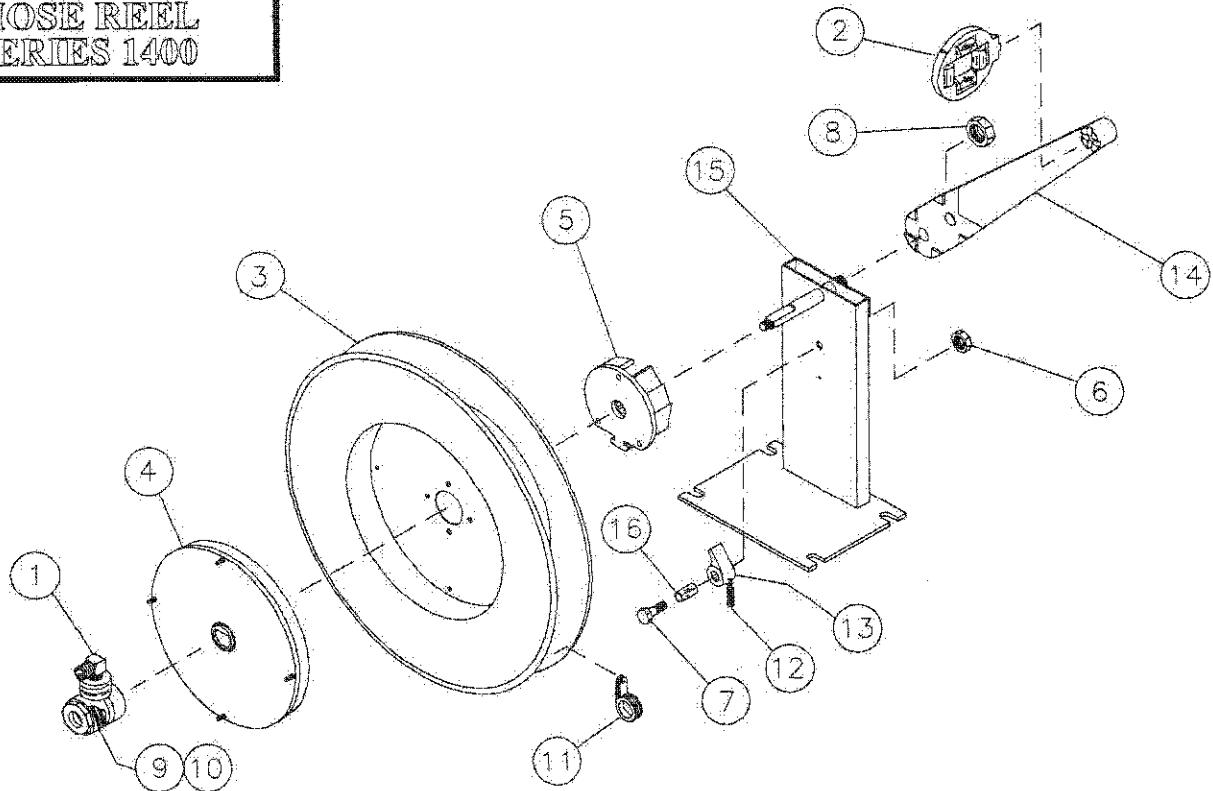


## PARTS LIST

\* MODEL NUMBER MUST BE KNOWN TO CLARIFY PART NUMBER  
USE HOSE & CORD CATALOG FOR REPLACEMENTS

NO.	PART#	DESCRIPTION	MODEL	NO.	PART#	DESCRIPTION	MODEL
1	SA-12	HOSE GUIDE with ROLLERS	ALL	8*	020-17	ADAPTER 3/8	1301,1302,1303,1304 1316,1317,1318,1319 1320
2	SA-23	LOCKING BAR ASSEMBLY	ALL	9	022-04	RETAINING RING	ALL
3*	SA-58	REEL SPOOL 20"	1301,1302,1303,1304 1305,1306,1311,1312 1313,1314,1315,1316 1317,1318,1319,1320	10	023-02	HOSE CLAMP	ALL
	SA-59	REEL SPOOL 22"	1307,1308,1309,1310	11	031-01	LOCKING CAM SPRING	ALL
4*	SS-402	MOTOR SPRING AND ARBOR ASSEMBLY	1301,1302,1305,1306 1309,1310,1311,1312 1313,1316,1317,1318	12*	039-01	MF 1/4 ELL	1311,1312,1313,1314 1315
	SS-442		1303,1304,1307,1308 1314,1315,1319,1320		039-02	FF 1/2 ELL	1305,1306,1307,1308
5	009-01	3/4-10 HEX NUT (2 REQ)	ALL		039-03	MF 1/4 x 3/8 ELL	1301,1302,1303,1304 1316,1317,1318,1319 1320
6*	018-03	AXLE 3/4	1309,1310	13	055-12	LOCKING CAM	ALL
	018-04	AXLE 1/2	1305,1306,1307,1308	14	055-13	GUIDE ARM LOCK	ALL
	018-05	AXLE 1/4 & 3/8	1301,1302,1303,1304 1311,1312,1313,1314 1315,1316,1317,1318 1319,1320	15	055-14	ROLLER GUIDE ARM	ALL
7*	020-01	SWIVEL JOINT 3/8 MP	1301,1302,1303,1304	17*	071-09	MOUNTING BASE (SMALL)	1301,1302,1303,1304 1305,1306,1311,1312 1313,1314,1315,1316 1317,1318,1319,1320
	020-02	SWIVEL JOINT 1/2 MP	1305,1306,1307,1308		071-10	MOUNTING BASE (LARGE)	1307,1308,1309,1310
	020-06	SWIVEL JOINT 1/4 HP	1311,1312,1313,1314 1315				
	020-07	SWIVEL JOINT 3/8 HP	1316,1317,1318,1319 1320				
	020-09	SWIVEL JOINT 3/4 HP	1309,1310				
8*	020-11	ADAPTER 1/2	1305,1306,1307,1308	NOTES:			
	020-15	ADAPTER 3/4	1309,1310				
	020-16	ADAPTER 1/4	1311,1312,1313,1314 1315				

# HOSE REEL SERIES 1400

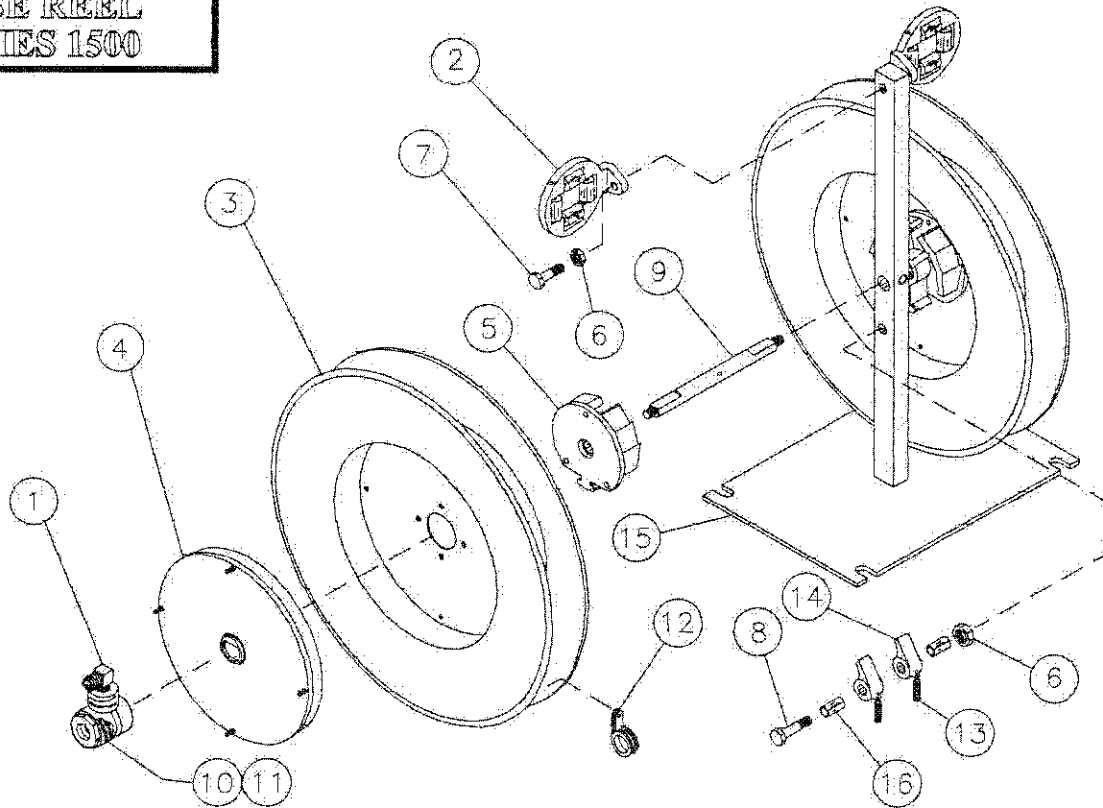


## PARTS LIST

\* MODEL NUMBER MUST BE KNOWN TO CLARIFY PART NUMBER  
USE HOSE & CORD CATALOG FOR REPLACEMENTS

NO.	PART#	DESCRIPTION	MODEL	NO.	PART#	DESCRIPTION	MODEL
1*	SA-01	SWIVEL JOINT 1/4	1401,1402,1403,1404 1405,1406	14	055-18	ROLLER GUIDE ARM	ALL
	SA-02	SWIVEL JOINT 3/8	1413,1414,1415,1416 1417,1418,1422	15*	071-11	MOUNTING BASE 9"	1401,1402,1413
	SA-03	SWIVEL JOINT 1/2	1419,1420,1424		071-12	MOUNTING BASE 10"	1403,1404,1414,1415 1422
			071-13		MOUNTING BASE 11"	1405,1406,1416,1417 1418,1419,1420,1424	
2	SA-13	HOSE GUIDE with ROLLERS	ALL	16	091-02	SPACER	ALL
3*	SA-54	REEL SPOOL w/HUB 14"	1401,1402,1413	17			
	SA-55	REEL SPOOL w/HUB 16"	1403,1404,1414,1415 1422	18			
	SA-56	REEL SPOOL w/HUB 18"	1405,1406,1416,1417 1419	19			
	SA-57	REEL SPOOL w/HUB 20"	1418,1420,1424	20			
4*	SS-201	MOTOR SPRING AND ARBOR ASSEMBLY	1401,1402,1403,1413 1414,1415	21			
	SS-211		1404,1416	22			
	SS-241		1405,1406,1417,1418				
	SS-301		1419,1420,1422,1424				
5	F-55-20	BEARING HUB	ALL	NOTES:			
6	006-01	3/8 KEPS NUT	ALL				
7	006-07	3/8 x 1 1/2 CS	ALL				
8	008-01	5/8-11 JAM NUT	ALL				
9	K21-01	O-RING KIT	1/4 SWIVEL				
10	K21-03	O-RING KIT	3/8 & 1/2 SWIVEL				
11	023-02	HOSE CLAMP	ALL				
12	031-01	LOCKING CAM SPRING	ALL				
13	055-17	LOCKING CAM	ALL				

# HOSE REEL SERIES 1500



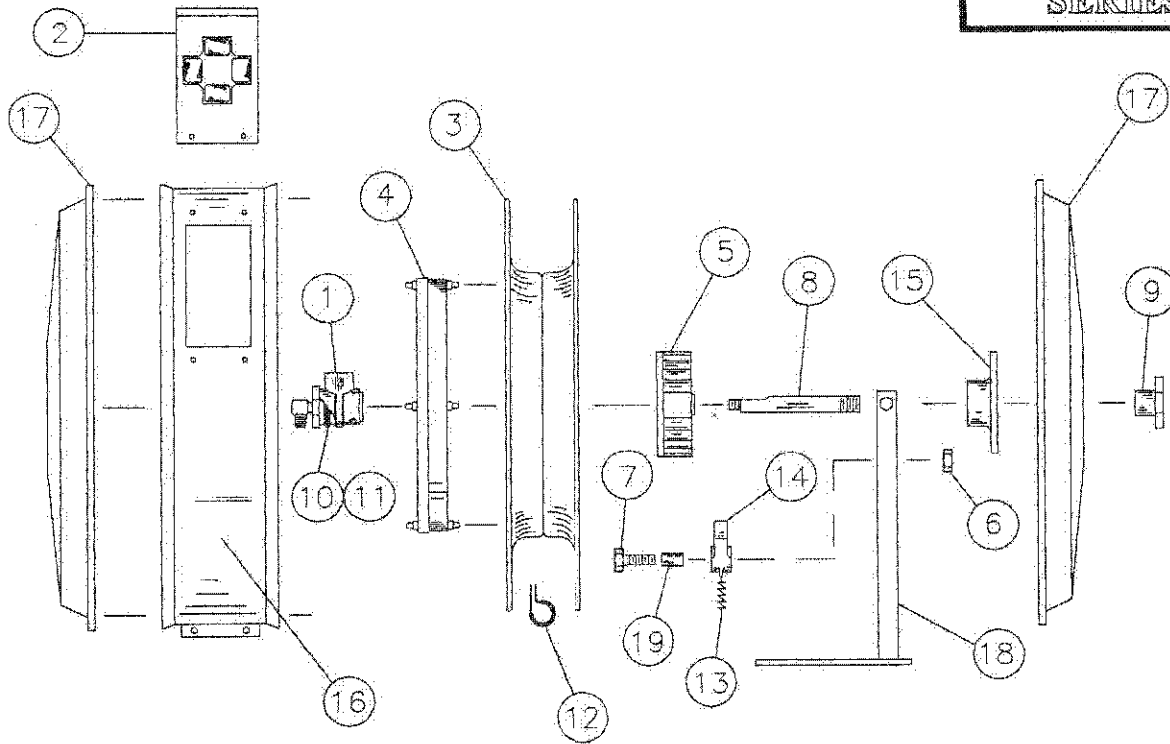
## PARTS LIST

\* MODEL NUMBER MUST BE KNOWN TO CLARIFY PART NUMBER  
USE HOSE & CORD CATALOG FOR REPLACEMENTS

NO.	PART#	DESCRIPTION	MODEL	NO.	PART#	DESCRIPTION	MODEL
1*	SA-01	SWIVEL JOINT 1/4	1501,1502,1503,1504 1505,1506	14	055-17	LOCKING CAM	ALL
	SA-02	SWIVEL JOINT 3/8	1513,1514,1515,1516 1517,1518,1522	15*	071-14	MOUNTING BASE 16 1/2	1501,1502,1503
	SA-03	SWIVEL JOINT 1/2	1519,1520,1524		071-15	MOUNTING BASE 18 1/2	1503,1504,1514,1515 1522
2	SA-14	HOSE GUIDE with ROLLERS	ALL		071-16	MOUNTING BASE 22	1505,1506,1516,1517 1518,1519,1520,1524
3*	SA-54	REEL SPOOL with HUB 14"	1501,1502,1513	16	091-02	SPACER	ALL
	SA-55	REEL SPOOL with HUB 16"	1503,1504,1514,1515 1522	17			
	SA-56	REEL SPOOL with HUB 18"	1505,1506,1516,1517 1519	18			
	SA-57	REEL SPOOL with HUB 20"	1518,1520,1524	19			
4*	SS-201	MOTOR SPRING ASSEMBLY	1501,1502,1503,1513 1514,1515	20			
	SS-211		1504,1516	21			
	SS-241		1505,1506,1517,1518	22			
	SS-301		1519,1520,1522,1524				
5	F-55-20	BEARING HUB L or R	ALL	NOTES:			
6	006-01	3/8 KEPS NUT	ALL				
7	006-08	3/8 x 2 CS	ALL				
8	006-09	3/8 x 3 CS	ALL				
9	018-07	AXLE	ALL				
10	K21-01	O-RING KIT	1/4 SWIVEL				
11	K21-03	O-RING KIT	3/8 1/2 SWIVEL				
12	023-02	HOSE CLAMP	ALL				
13	031-01	LOCKING CAM SPRING	ALL				



# HOSE REEL SERIES 1600

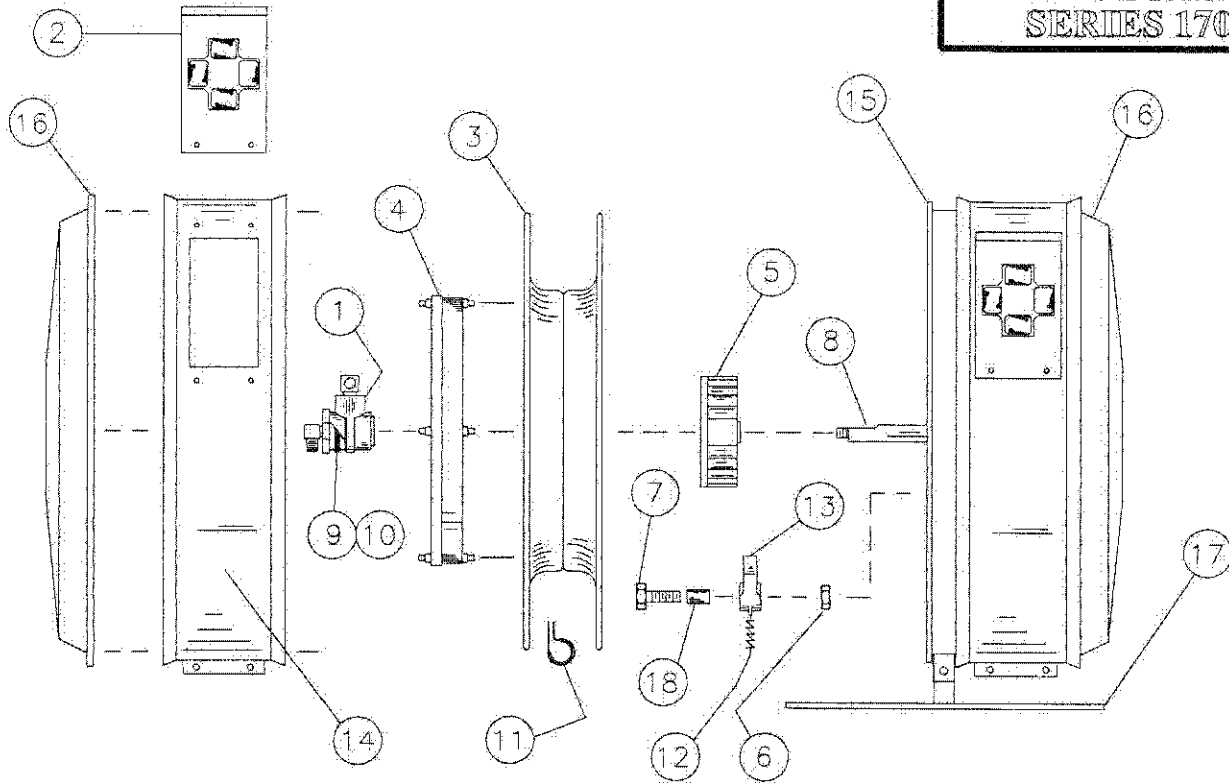


## PARTS LIST

\* MODEL NUMBER MUST BE KNOWN TO CLARIFY PART NUMBER  
USE HOSE & CORD CATALOG FOR REPLACEMENTS

NO.	PART#	DESCRIPTION	MODEL	NO.	PART#	DESCRIPTION	MODEL
1*	SA-01	SWIVEL JOINT 1/4	1601,1602,1603,1604 1611-L	15	055-23	COVER SUPPORT FLANGE	ALL
	SA-02	SWIVEL JOINT 3/8	1608,1609,1610,1613-L	16*	065-02	COVER BAND 17"	1601,1602,1603,1604 1608,1609,1610
	SA-03	SWIVEL JOINT 1/2	1614-L		065-05	COVER BAND 20"	1611-L,1613-L,1614-L
2*	SA-15	HOSE GUIDE with ROLLERS	1601,1602,1603,1604 1608,1609,1610	17*	070-38	END ENCLOSURE 17"	1601,1602,1603,1604 1608,1609,1610
	SA-16		1611-L,1613-L,1614-L		070-40	END ENCLOSURE 20"	1611-L,1613-L,1614-L
3*	SA-52	REEL SPOOL with HUB 14"	1601,1602,1603,1604 1608,1609,1610	18*	071-17	MOUNTING BASE 10 1/2"	1601,1602,1603,1604 1608,1609,1610
	SA-53	REEL SPOOL with HUB 16"	1611-L,1613-L,1614-L		071-18	MOUNTING BASE 12"	1611-L,1613-L,1614-L
4*	SS-201	MOTOR SPRING ASSEMBLY	1601,1602,1603,1608 1609	19	091-02	SPACER	ALL
	SS-211		1604,1610	20			
	SS-241		1611-L,1613-L	21			
	SS-301		1614-L	22			
5	F-55-20	BEARING HUB	ALL	NOTES:			
6	006-01	3/8 KEPS NUT	ALL				
7	006-08	3/8 x 2 CS	ALL				
8	018-06	AXLE	ALL				
9	018-38	COVER SUPPORT NUT	ALL				
10	K21-01	O-RING KIT	1/4 SWIVEL				
11	K21-03	O-RING KIT	3/8 & 1/2 SWIVEL				
12	023-02	HOSE CLAMP	ALL				
13	031-01	LOCKING CAM SPRING	ALL				
14	055-17	LOCKING CAM	ALL				

# HOSE REEL SERIES 1700

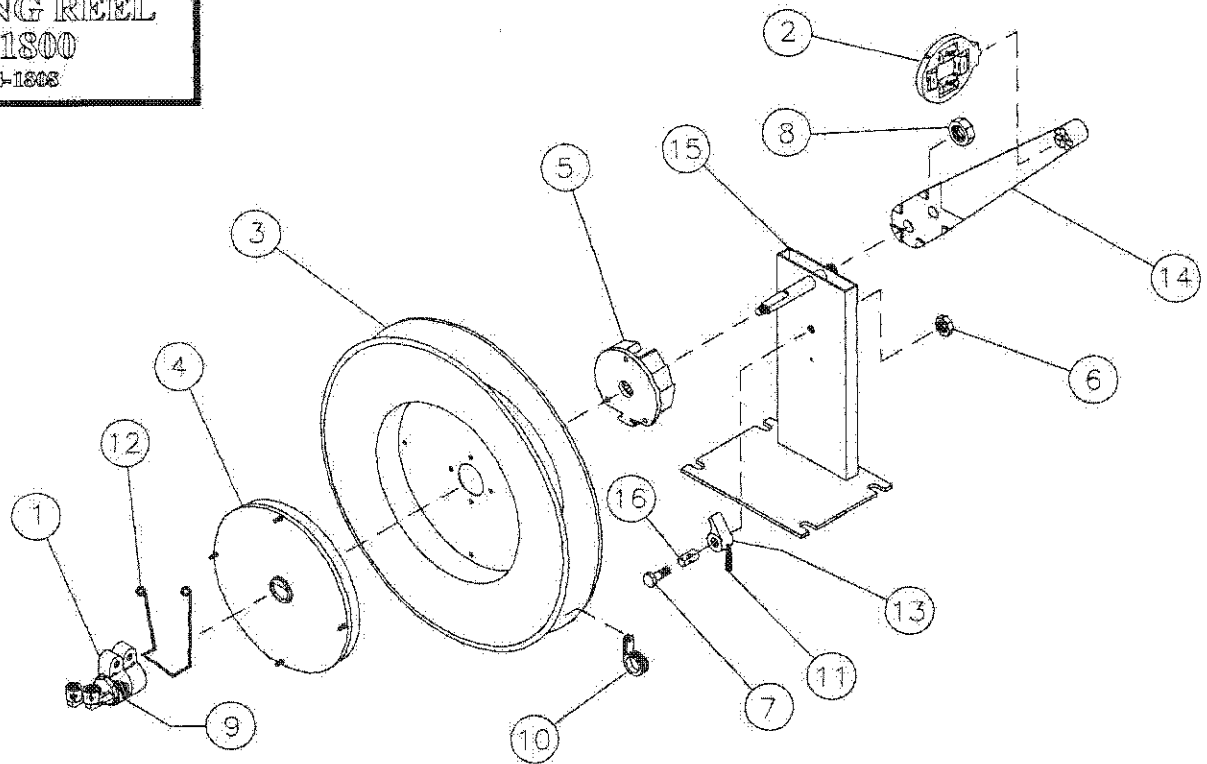


## PARTS LIST

\* MODEL NUMBER MUST BE KNOWN TO CLARIFY PART NUMBER  
USE HOSE & CORD CATALOG FOR REPLACEMENTS

NO.	PART#	DESCRIPTION	MODEL	NO.	PART#	DESCRIPTION	MODEL
1*	SA-01	SWIVEL JOINT 1/4"	1701,1702,1703,1704 1711-L	14* cont:	065-05	COVER BAND 20"	1711-L,1713-L,1714-L
	SA-02	SWIVEL JOINT 3/8"	1708,1709,1710,1713-L	15*	065-08	CENTER SUPPORT BAND 17"	1701,1702,1703,1704 1708,1709,1710
	SA-03	SWIVEL JOINT 1/2"	1714-L		065-09	CENTER SUPPORT BAND 20"	1711-L,1713-L,1714-L
2*	SA-15	HOSE GUIDE with ROLLERS	1701,1702,1703,1704 1708,1709,1710	16*	070-38	END ENCLOSURE 17"	1701,1702,1703,1704 1708,1709,1710
	SA-16		1711-L,1713-L,1714-L		070-40	END ENCLOSURE 20"	1711-L,1713-L,1714-L
3*	SA-52	REEL SPOOL with HUB 14"	1701,1702,1703,1704 1708,1709,1710	17*	071-19	MOUNTING BASE 10 1/2"	1701,1702,1703,1704 1708,1709,1710
	SA-53	REEL SPOOL with HUB 16"	1711-L,1713-L,1714-L		071-57	MOUNTING BASE 12"	1711-L,1713-L,1714-L
4*	SS-201	MOTOR SPRING ASSEMBLY	1701,1702,1703,1708 1709	18	091-02	SPACER	ALL
	SS-211		1704,1710	19			
	SS-241		1711-L,1713-L	20			
	SS-301		1714-L	21			
5	F-55-20	BEARING HUB	ALL	NOTES:			
6	006-01	3/8 KEPS NUT	ALL				
7	006-09	3/8 x 3 CS	ALL				
8	018-07	AXLE	ALL				
9	K21-01	O-RING KIT	1/4 SWIVEL				
10	K21-03	O-RING KIT	3/8 & 1/2 SWIVEL				
11	023-02	HOSE CLAMP	ALL				
12	031-01	LOCKING CAM SPRING	ALL				
13	055-17	LOCKING CAM	ALL				
14*	065-02	COVER BAND 17"	1701,1702,1703,1704 1708,1709,1710				

**WELDING REEL  
SERIES 1800  
MODELS 1804-1808**

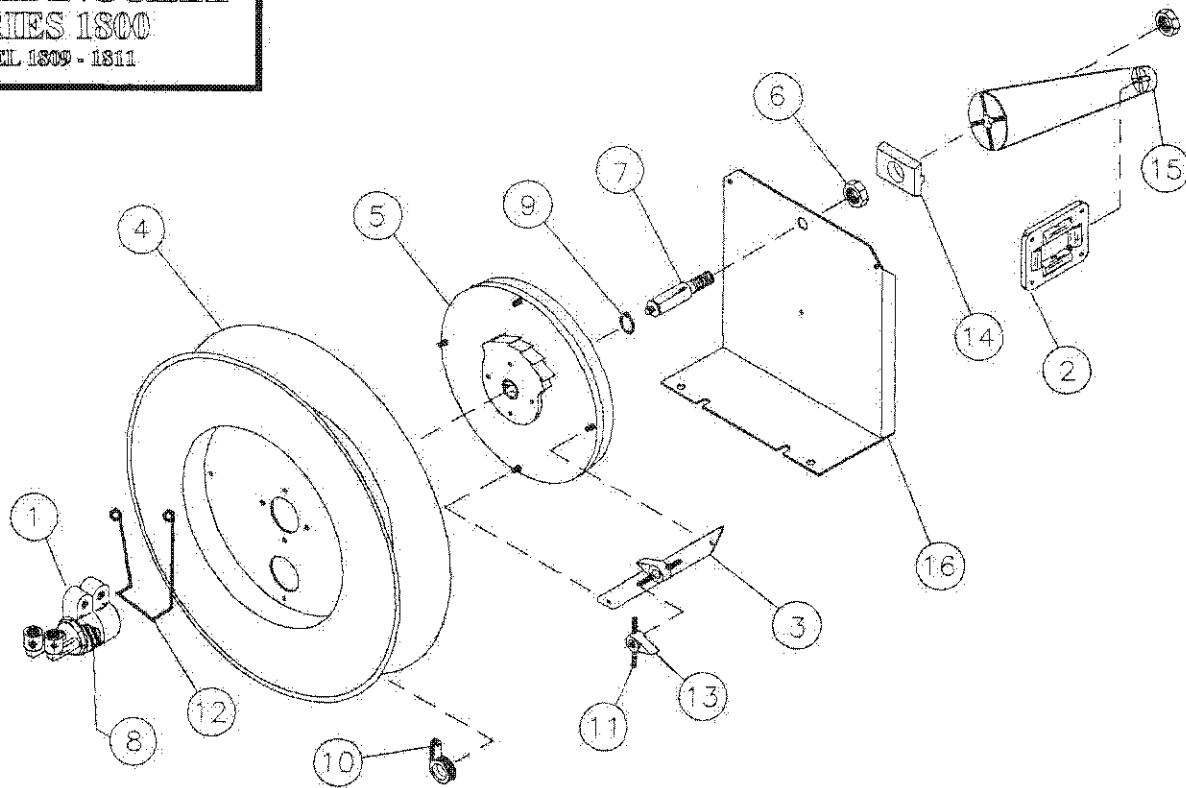


**PARTS LIST**

\* MODEL NUMBER MUST BE KNOWN TO CLARIFY PART NUMBER  
USE HOSE & CORD CATALOG FOR REPLACEMENTS

NO.	PART#	DESCRIPTION	MODEL	NO.	PART#	DESCRIPTION	MODEL
1	SA-06	SWIVEL JOINT - WELDING	ALL	17			
2	SA-13	HOSE GUIDE with ROLLERS	ALL	18			
3*	SA-55	REEL SPOOL with HUB 16"	1804	19			
	SA-56	REEL SPOOL with HUB 18"	1805,1806	20			
	SA-57	REEL SPOOL with HUB 20"	1807,1808	21			
4*	SS-301	MOTOR SPRING ASSEMBLY	1804,1805	22			
	SS-311		1806	23			
	SS-341		1807,1808	24			
5	F-55-20	BEARING HUB	ALL	25			
6	006-01	3/8 KEPS NUT	ALL	26			
7	006-07	3/8 x 1 1/2 CS	ALL	27			
8	008-01	5/8-11 JAM NUT	ALL	NOTES:			
9	K21-04	O-RING KIT	WELDING SWIVEL				
10	023-03	HOSE CLAMP	ALL				
11	031-01	LOCKING CAM SPRING	ALL				
12	031-02	WELDING TEE SPRING	ALL				
13	055-17	LOCKING CAM	ALL				
14	055-18	ROLLER GUIDE ARM	ALL				
15*	071-12	MOUNTING BASE 10	1804				
	071-13	MOUNTING BASE 11	1805,1806,1807,1808				
16	091-02	SPACER	ALL				

**WELDING REEL  
SERIES 1800  
MODEL 1809 - 1811**

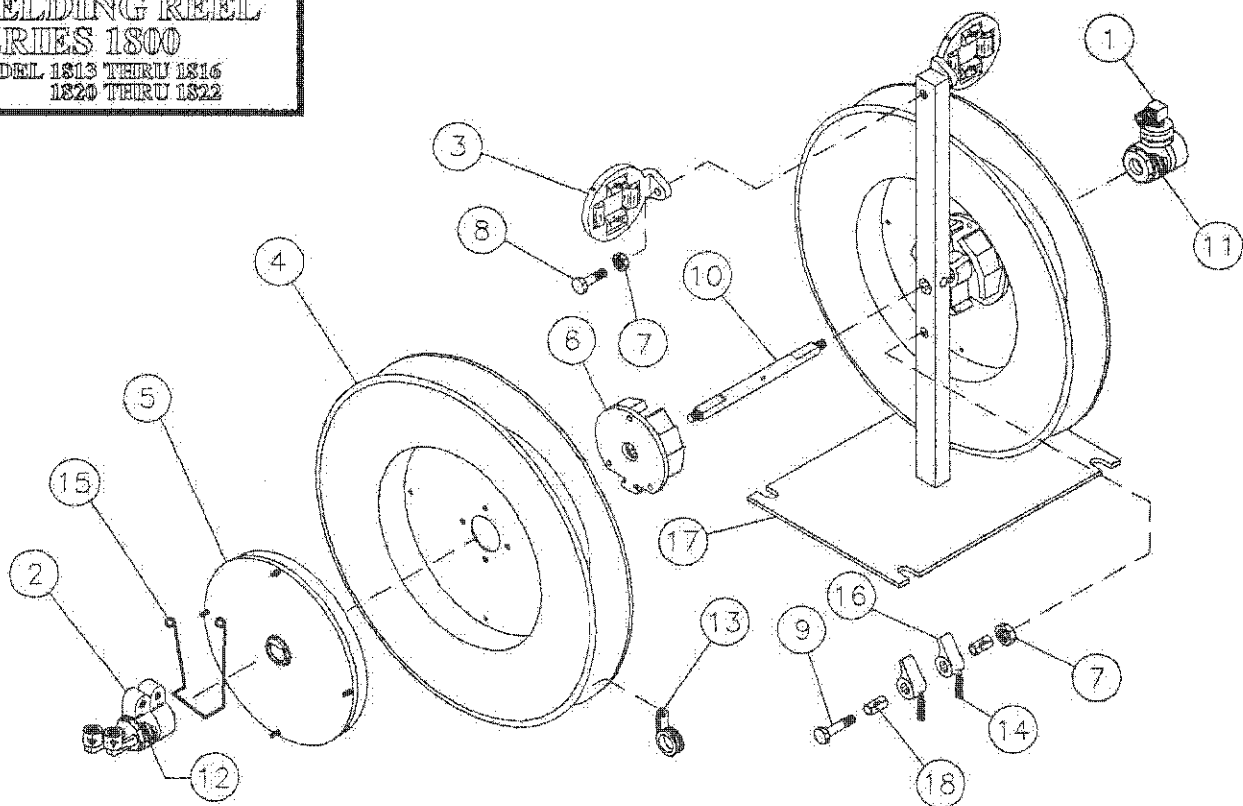


**PARTS LIST**

\* MODEL NUMBER MUST BE KNOWN TO CLARIFY PART NUMBER  
USE HOSE & CORD CATALOG FOR REPLACEMENTS

NO.	PART#	DESCRIPTION	MODEL	NO.	PART#	DESCRIPTION	MODEL
1	SA-06	SWIVEL JOINT - WELDING	ALL	20			
2	SA-12	HOSE GUIDE with ROLLERS	ALL	21			
3	SA-23	LOCKING BAR ASSEMBLY	ALL	22			
4	SA-59	REEL SPOOL 22"	ALL	23			
5*	SS-442	MOTOR SPRING AND ARBOR ASSEMBLY	1809	24			
	SS-462		1810	25			
	SS-472		1811	26			
6	009-01	3/4-10 HEX NUT	ALL	27			
7	018-03	AXLE	ALL	28			
8	K21-04	O-RING KIT	WELDING SWIVEL	29			
9	022-04	RETAINING RING	ALL	30			
10	023-02	HOSE CLAMP	ALL	NOTES:			
11	031-01	LOCKING CAM SPRING	ALL				
12	031-02	WELDING TEE SPRING	ALL				
13	055-12	LOCKING CAM	ALL				
14	055-13	GUIDE ARM LOCK	ALL				
15	055-14	ROLLER GUIDE ARM	ALL				
16	071-10	MOUNTING BASE LARGE	ALL				
17							
18							
19							

**WELDING REEL  
SERIES 1800**  
MODEL 1813 THRU 1816  
1820 THRU 1822

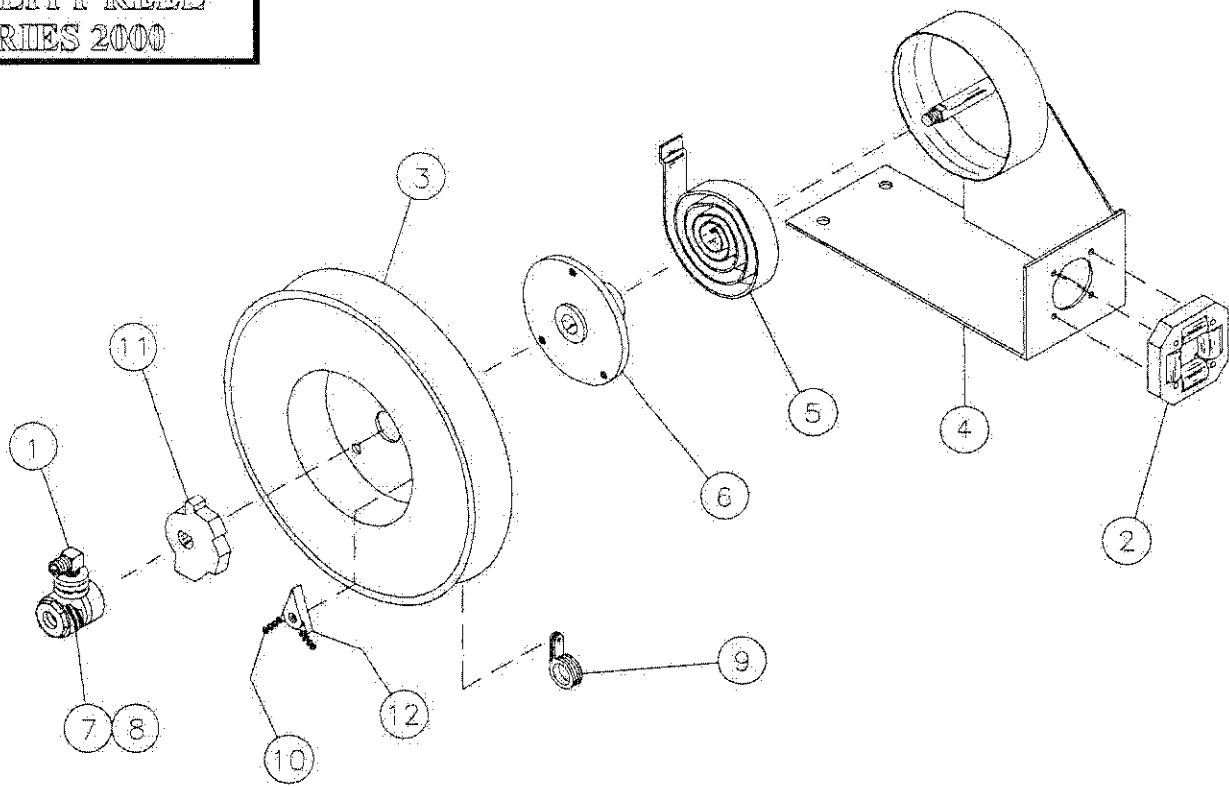


**PARTS LIST**

\* MODEL NUMBER MUST BE KNOWN TO CLARIFY PART NUMBER  
USE HOSE & CORD CATALOG FOR REPLACEMENTS

NO.	PART#	DESCRIPTION	MODEL	NO.	PART#	DESCRIPTION	MODEL
1	SA-02	SWIVEL JOINT 3/8"	1820,1821,1822	17*	071-16	MOUNTING BASE 22	1814,1815,1816,1821 1822
2	SA-06	SWIVEL JOINT - WELDING	1813,1814,1815,1816 1820,1821,1822	18	091-02	SPACER	ALL
3	SA-14	HOSE GUIDE with ROLLERS	ALL	19			
4*	SA-55	REEL SPOOL with HUB 16"	1813,1820	20			
	SA-56	REEL SPOOL with HUB 18"	1814,1821	21			
	SA-57	REEL SPOOL with HUB 20"	1815,1816,1820	22			
5*	SS-301	MOTOR SPRING ASSEMBLY	1813,1820	23			
	SS-311		1814,1821	24			
	SS-341		1815,1816,1822	25			
6	F-55-20	BEARING HUB	ALL	26			
7	006-01	3/8 KEPS NUT	ALL	27			
8	006-08	3/8 x 2 CS	ALL	<b>NOTES:</b>			
9	006-09	3/8 x 3 CS	ALL				
10	018-07	AXLE	ALL				
11	K21-03	O-RING KIT 3/8"	1820,1821,1822				
12	K21-04	O-RING KIT	WELDING SWIVEL				
13	023-02	HOSE CLAMP	ALL				
14	031-01	LOCKING CAM SPRING	ALL				
15	031-02	WELDING TEE SPRING	ALL				
16	055-17	LOCKING CAM	ALL				
17*	071-15	MOUNTING BASE 18 1/2"	1813,1820				

**UTILITY REEL  
SERIES 2000**

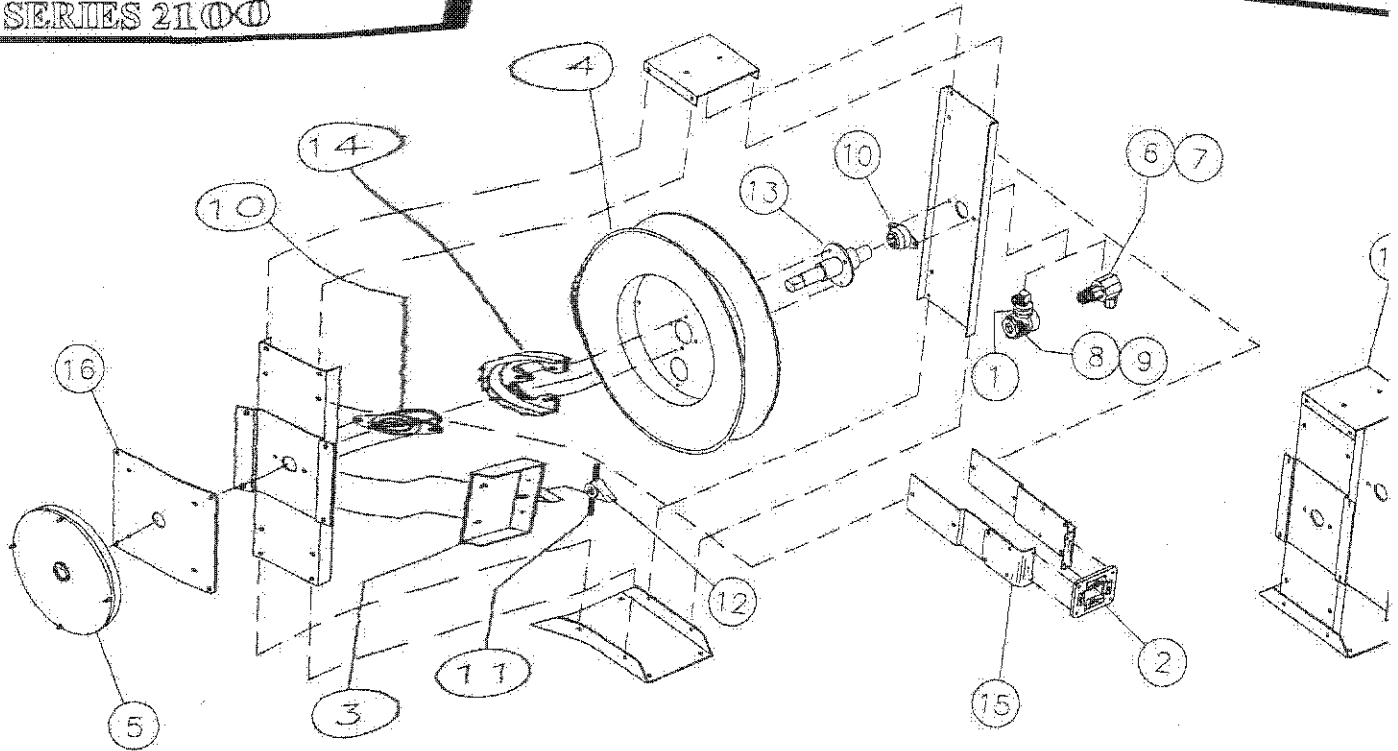


**PARTS LIST**

\* MODEL NUMBER MUST BE KNOWN TO CLARIFY PART NUMBER  
USE HOSE & CORD CATALOG FOR REPLACEMENTS

NO.	PART#	DESCRIPTION	MODEL	NO.	PART#	DESCRIPTION	MODEL
1*	SA-01	SWIVEL JOINT 1/4	2001,2002,2003	21			
	SA-02	SWIVEL JOINT 3/8	2006	22			
2	SA-17	HOSE GUIDE with ROLLERS	ALL	23			
3	SA-60	REEL SPOOL	ALL	24			
4	SA-62	MOUNTING BASE ASSEMBLY	ALL	25			
5	SS-150	MOTOR SPRING	ALL	26			
6	F-55-25	BEARING HUB	ALL	27			
7	K21-01	O-RING KIT	1/4 SWIVEL	28			
8	K21-03	O-RING KIT	3/8 SWIVEL	29			
9	023-02	HOSE CLAMP	ALL	30			
10	031-01	LOCKING CAM SPRING	ALL	31			
11	055-26	LOCKING RING	ALL	NOTES:			
12	055-27	LOCKING CAM	ALL				
13							
14							
15							
16							
17							
18							
19							
20							

# HOSE REEL SERIES 2100



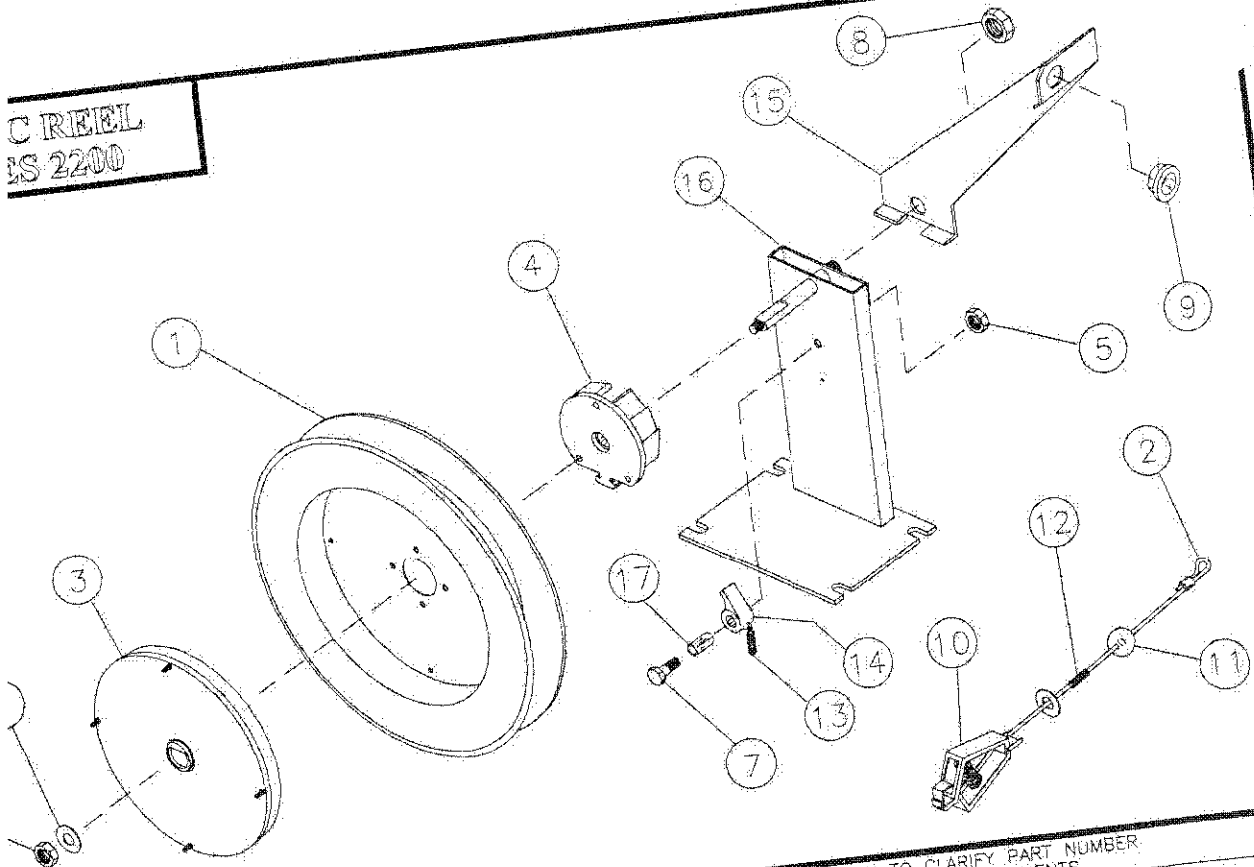
## PARTS LIST

\* MODEL NUMBER MUST BE KNOWN TO CLARIFY PART NUMBER.  
USE HOSE & CORD CATALOG FOR REPLACEMENTS

NO.	PART#	DESCRIPTION	MODEL	NO.	PART#	DESCRIPTION	MODEL
1*	SA-38	SWIVEL JOINT 1/4"	2119	10	027-06	FLANGE BEARING	
	SA-39	SWIVEL JOINT 3/8"	2101,2102,2105,2106 2120	11	031-01	LOCKING CAM SPRING	ALL
	SA-40	SWIVEL JOINT 1/2"	2103,2104,2107,2108	12	055-12	LOCKING CAM	ALL
2	SA-18	HOSE GUIDE with ROLLERS	ALL	13*	055-28	AXLE 1/4"	ALL
3	SA-24	LOCKING BRKT. ASSEMBLY	ALL			AXLE 3/8"	2113,2114,2101,2102,2109,2110,2111,2120
4	SA-59	REEL SPOOL 22"	ALL			AXLE 1/2"	2103,2104,2107,2111,2112
5*	SS-343	MOTOR SPRING ASSEMBLY 12"	2101			AXLE 3/4"	2117,2118
	SS-353		2102	14	055-34	LOCKING CAM RING	ALL
	SS-443		2103,2104,2105,2107 2109	15	065-22	ARM SET	ALL
	SS-453		2106,2108,2110	16	065-23	SPRING PLATE - 16"	ALL
	SS-603		2117,2118	17	071-21	BASE SET	2119,2120
	SS-623		2111,2113,2115				ALL
	SS-633		2112,2114,2116				
	SS-384	MOTOR SPRING ASSEM. 16"	2119,2120				
6*	020-01	SWIVEL JOINT M.P. 3/8"	2109,2110				
	020-03	SWIVEL JOINT M.P. 1/2"	2111,2112				
	020-09	SWIVEL JOINT M.P. 3/4"	2117,2118				
7*	020-06	SWIVEL JOINT H.P. 1/4"	2113,2114				
	020-07	SWIVEL JOINT H.P. 3/8"	2115,2116				
8	K21-01	O-RING KIT	1/4 SWIVEL				
9	K21-03	O-RING KIT	3/8 & 1/2 SWIVEL				

NOTES:

**C REEL  
ES 2200**



\* MODEL NUMBER MUST BE KNOWN TO CLARIFY PART NUMBER.  
USE HOSE & CORD CATALOG FOR REPLACEMENTS

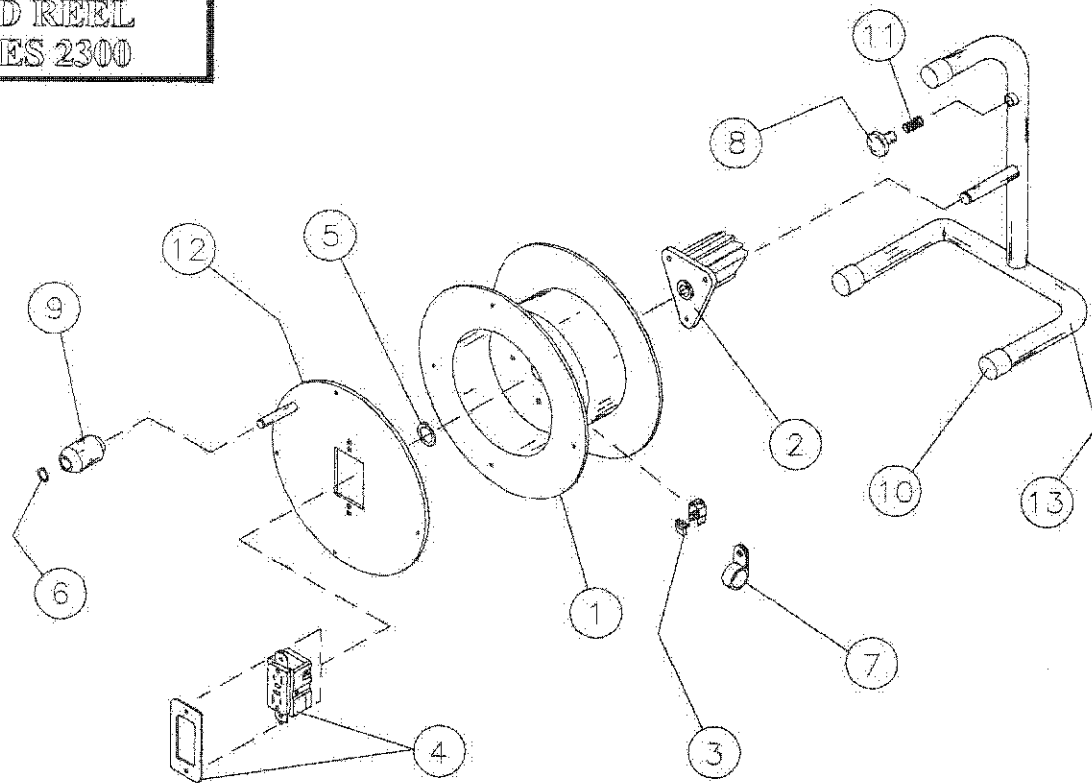
**PARTS LIST**

PART#	DESCRIPTION	MODEL	NO.	PART#	DESCRIPTION	MODEL
SA-65	REEL SPOOL with HUB 12"	2201,2202,2204	16*	071-58	BASE 7.5"	2201,2202,2204
SA-66	REEL SPOOL with HUB 16"	2205,2206		071-59	BASE 9"	2205,2206
SA-80	CABLE SET 50'	2204	17	091-02	SPACER	ALL
SA-81	CABLE SET 75'	2206	18			
SA-82	CABLE SET 100'	2201,2202	19			
SS-141	MOTOR SPRING ASSEMBLY	2204	20			
SS-161	MOTOR SPRING ASSEMBLY	2205,2206	21			
SS-182	MOTOR SPRING ASSEMBLY	ALL	22			
F-55-20	BEARING HUB (RIGHT SIDE)	ALL	23			
5	006-01 3/8 NUT & WASHER	ALL	24			
6	006-02 3/8 FLAT WASHER	ALL	25			
7	006-07 3/8 x 1 1/2 CS BOLT	ALL				
8	008-01 5/8-11 JAM NUT	ALL				
9	019-65 NYLON CABLE GUIDE	ALL				
10	019-67 100 AMP GROUND CLAMP	ALL				
11	025-07 BALL STOP	ALL				
12	030-16 COMPRESSION SPRING	ALL				
13	031-01 S/S SPRING	ALL				
14	055-17 LOCKING DEVICE CAM	2201,2202,2204				
15*	065-25 GUIDE ARM 8"	2205,2206				
	065-26 GUIDE ARM 10"					

**NOTES:**



**CORD REEL  
SERIES 2300**

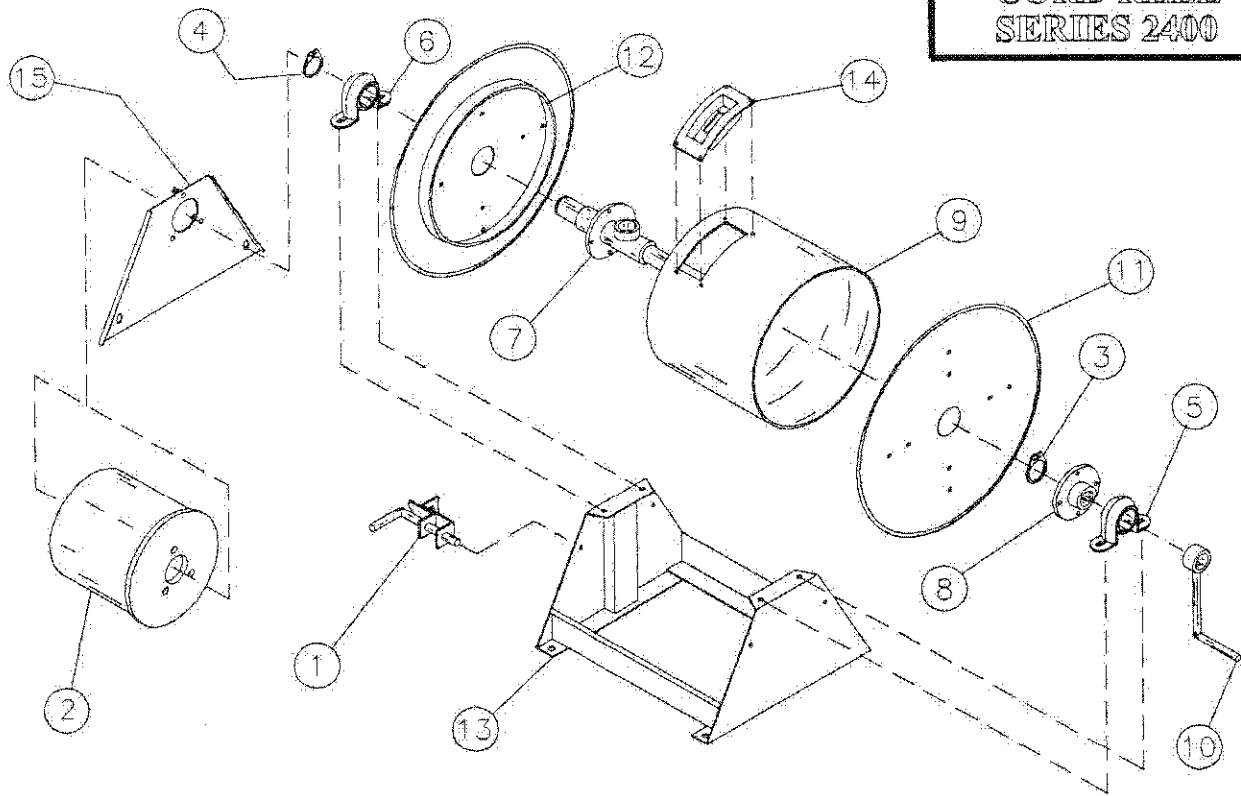


**PARTS LIST**

\* MODEL NUMBER MUST BE KNOWN TO CLARIFY PART NUMBER  
USE HOSE & CORD CATALOG FOR REPLACEMENTS

NO.	PART#	DESCRIPTION	MODEL	NO.	PART#	DESCRIPTION	MODEL
1*	SA-67	REEL SPOOL with HUB 12"	2301,2302,2303	18			
	SA-68	REEL SPOOL with HUB 15"	2304,2305,2306	19			
2	F-55-50	BEARING HUB	ALL	20			
3	019-46	90° STRAIN RELIEF	ALL	21			
4	019-76	FUSED. RECEPTACLE	ALL	22			
5	022-10	5100-59 RETAINING RING	ALL	23			
6	022-11	5/16 "E" RING	ALL	24			
7*	023-06	G6 RUBBER CLAMP	2301,2302,2303	25			
	023-07	G6 RUBBER CLAMP	2304,2305,2306	26			
8	023-08	NYLON DRAG	ALL	27			
9	024-10	NYLON ROLLER (HANDLE)	ALL	28			
10	025-06	PLASTIC END CAPS	ALL	NOTES:			
11	030-16	COMPRESSION SPRING	ALL				
12*	065-30	COVER (SMALL)	2301,2302,2303				
	065-31	COVER (LARGE)	2304,2305,2306				
13*	071-60	TUBE BASE (SMALL)	2301,2302,2303				
	071-61	TUBE BASE (LARGE)	2304,2305,2306				
14							
15							
16							
17							

**CORD REEL  
SERIES 2400**

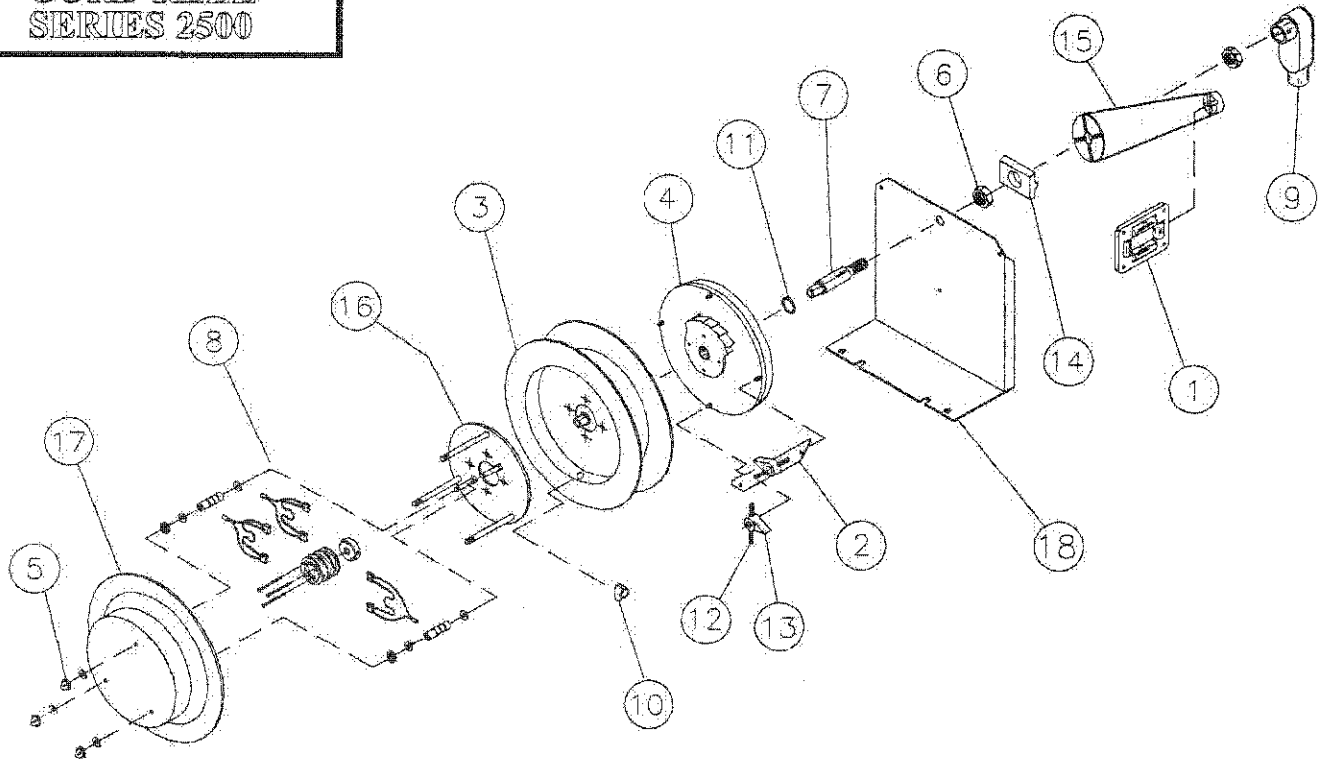


**PARTS LIST**

\* MODEL NUMBER MUST BE KNOWN TO CLARIFY PART NUMBER  
USE HOSE & CORD CATALOG FOR REPLACEMENTS

NO.	PART#	DESCRIPTION	MODEL	NO.	PART#	DESCRIPTION	MODEL
1	SA-26	LOCKING PIN BRKT.	ALL	22			
2	019-45	COLLECTOR RING ASSEMBLY	ALL	23			
3	022-05	3100-125 RET. RING	ALL	24			
4	022-06	3100-150 RET. RING	ALL	25			
5	027-01	TRI BEARING 1 1/4	ALL	26			
6	027-02	TRI BEARING 1 1/2	ALL	27			
7	055-32	3007 AXLE CASTING	ALL	28			
8	055-33	3011 AXLE CAST. FLANGE	ALL	29			
9	066-15	2430 REEL DRUM	ALL	30			
10	067-05	2908 CRANK HANDLE	ALL	31			
11	070-33	3022 STEEL DISC 18"	ALL	32			
12	070-44	2910 DRUM SUPPORTS	ALL	NOTES:			
13	071-22	2902 REEL BASE 14"	ALL				
14	071-66	2420 CABLE DRUM GUIDE	ALL				
15	071-67	2405 SLIP RING MOUNT	ALL				
16							
17							
18							
19							
20							
21							

# CORD REEL SERIES 2500

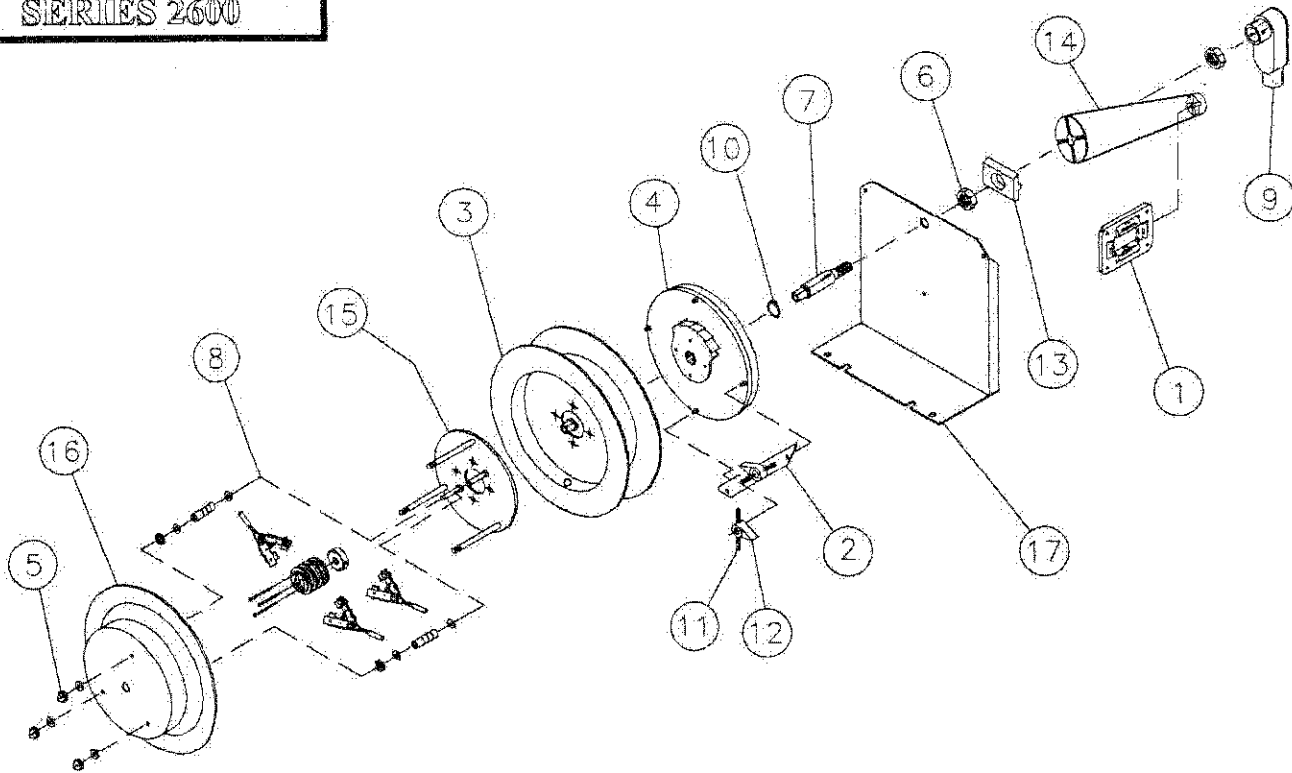


## PARTS LIST

\* MODEL NUMBER MUST BE KNOWN TO CLARIFY PART NUMBER  
USE HOSE & CORD CATALOG FOR REPLACEMENTS

NO.	PART#	DESCRIPTION	MODEL	NO.	PART#	DESCRIPTION	MODEL
1	SA-13	CORD GUIDE with ROLLERS	ALL	21			
2	SA-22	LOCKING BAR ASSEMBLY	ALL	22			
3	SA-64	REEL SPOOL 14"	ALL	23			
4	SS-855	MOTOR SPRING with HUB	ALL	24			
5	005-12	5/16" ACORN NUTS	ALL	25			
6	018-36	1/2-14 NPS NUT (2 REQ)	ALL	26			
7	018-39	AXLE	ALL	27			
8	018-43	COLLECTOR RING ASSEMBLY	ALL	28			
9*	019-18	SLB CONDUIT BOX 1.8	2500,2501	29			
	019-83	CONDUIT BOX 4.0	2502,2503	30			
10	019-46	90° STRAIN RELIEF	ALL	31			
11	022-04	RETAINING RING	ALL	NOTES:			
12	031-01	S/S SPRING	ALL				
13	055-12	LOCKING DEVICE CAM	ALL				
14	055-13	GUIDE ARM LOCK	ALL				
15	055-48	GUIDE ARM	ALL				
16	065-28	BRUSH PLATE	ALL				
17	070-53	COVER	ALL				
18	070-56	MOUNTING BASE	ALL				
19							
20							

**CORD REEL  
SERIES 2600**

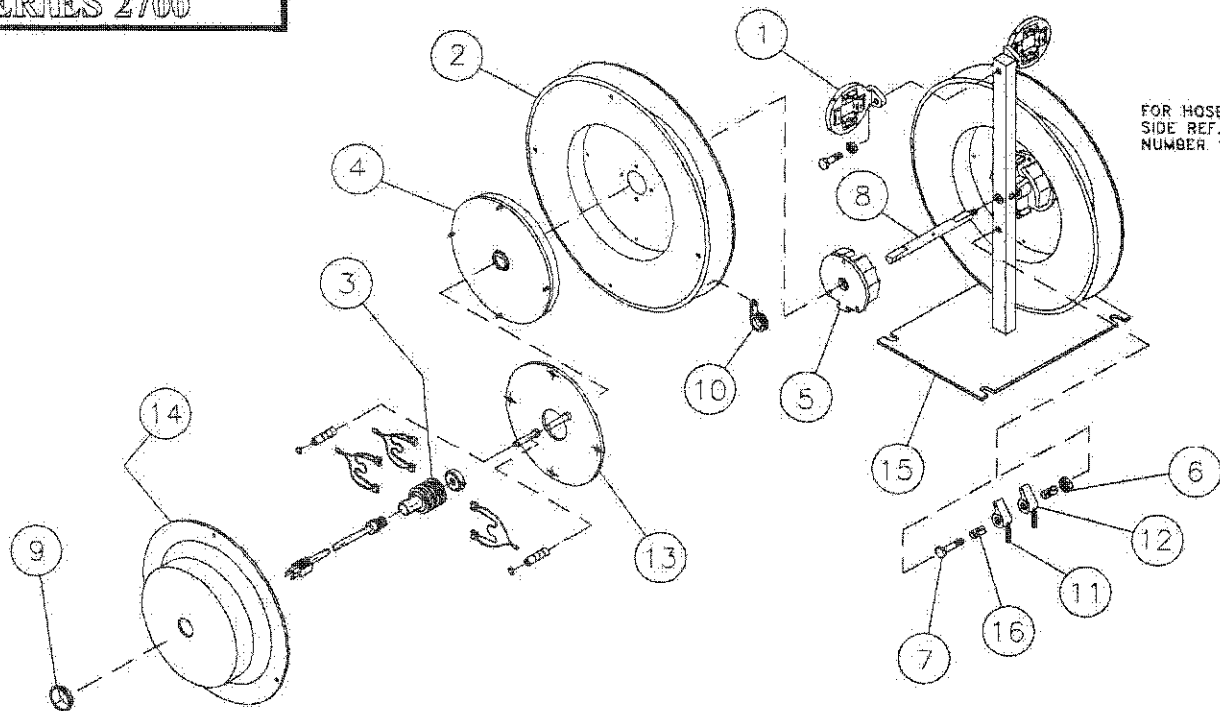


**PARTS LIST**

\* MODEL NUMBER MUST BE KNOWN TO CLARIFY PART NUMBER  
USE HOSE & CORD CATALOG FOR REPLACEMENTS

NO.	PART#	DESCRIPTION	MODEL	NO.	PART#	DESCRIPTION	MODEL
1	SA-12	CORD GUIDE with ROLLERS	ALL	22			
2	SA-23	LOCKING BAR ASSEMBLY	ALL	23			
3	SA-58	REEL SPOOL 20"	ALL	24			
4	SS-342	MOTOR SPRING with HUB	ALL	25			
5	005-12	5/16 ACORN NUTS	ALL	26			
6	018-36	1/2-14 NPS NUT (2 REQ)	ALL	27			
7	018-39	AXLE	ALL	28			
8	019-44	COLLECTOR RING ASSEMBLY	ALL	29			
9	019-83	CONDUIT BOX 4.0	ALL	30			
10	022-04	RETAINING RING	ALL	31			
11	031-01	S/S SPRING (2 REQ)	ALL	32			
12	055-12	LOCKING DEVICE CAM	ALL	NOTES:			
13	055-13	GUIDE ARM LOCK	ALL				
14	055-18	GUIDE ARM	ALL				
15	065-29	BRUSH PLATE	ALL				
16	070-54	COVER	ALL				
17	071-09	MOUNTING BASE	ALL				
18							
19							
20							
21							

# DOUBLE REEL SERIES 2700

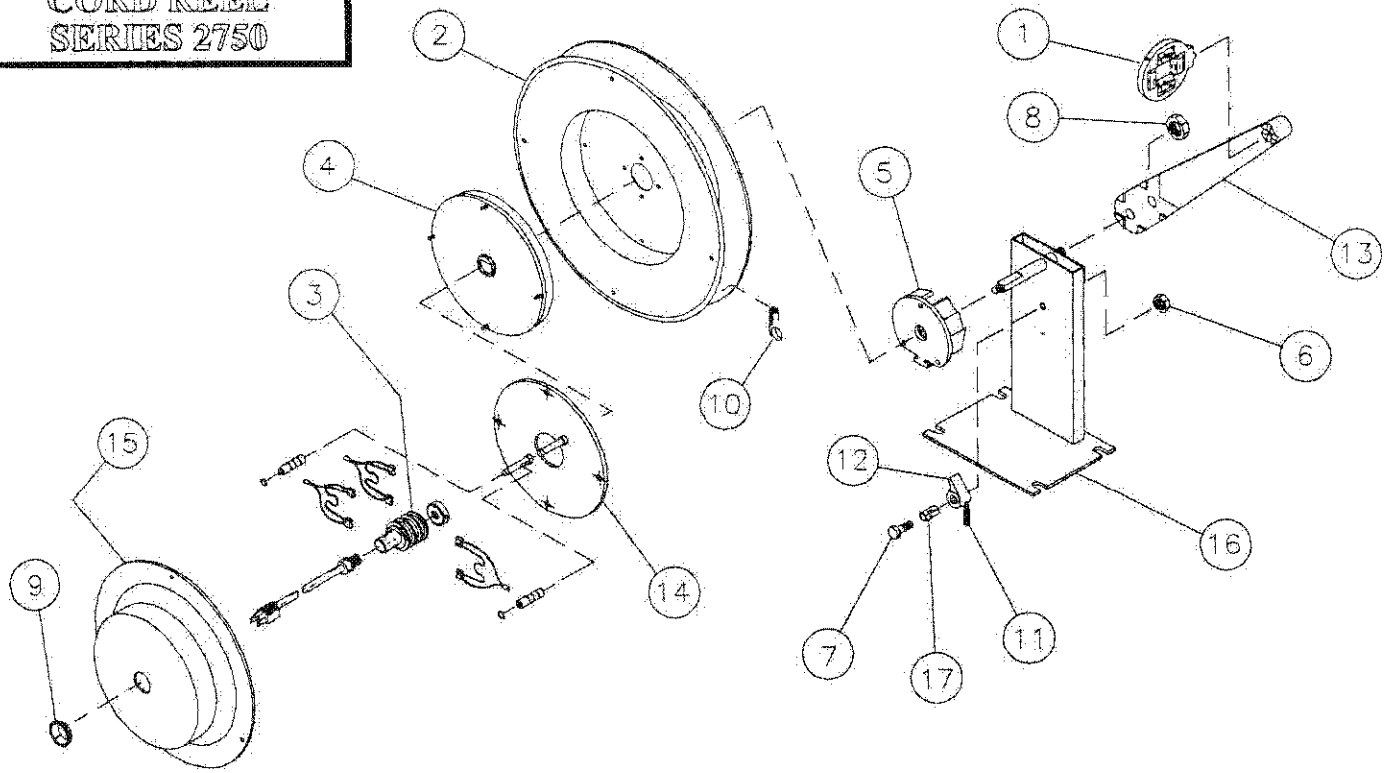


## PARTS LIST

\* MODEL NUMBER MUST BE KNOWN TO CLARIFY PART NUMBER  
USE HOSE & CORD CATALOG FOR REPLACEMENTS

NO.	PART#	DESCRIPTION	MODEL	NO.	PART#	DESCRIPTION	MODEL
1	SA-14	CORD GUIDE with ROLLERS	ALL	22			
2	SA-54	REEL SPOOL with HUB	ALL	23			
3	SA-83	COLLECTOR RING ASSEMBLY	ALL	24			
4	SS-811	MOTOR SPRING ASSEMBLY	ALL	25			
5	F-55-20	BEARING HUB (LEFT SIDE)	ALL	26			
6	006-01	3/8 KEPS NUT	ALL	27			
7	008-09	3/8 x 3 CS BOLT	ALL	28			
8	018-50	2715 AXLE	ALL	29			
9	019-41	SNAP BUSHING	ALL	30			
10	023-06	GS RUBBER CLAMP	ALL	31			
11	031-01	S/S SPRING	ALL	32			
12	055-17	LOCKING DEVICE CAM	ALL	NOTES:			
13	065-32	BRUSH PLATE	ALL				
14	070-57	2720 COVER	ALL				
15	071-14	1505 REEL BASE 1 1/2	ALL				
16	091-02	SPACER	ALL				
17							
18							
19							
20							
21							

**CORD REEL  
SERIES 2750**

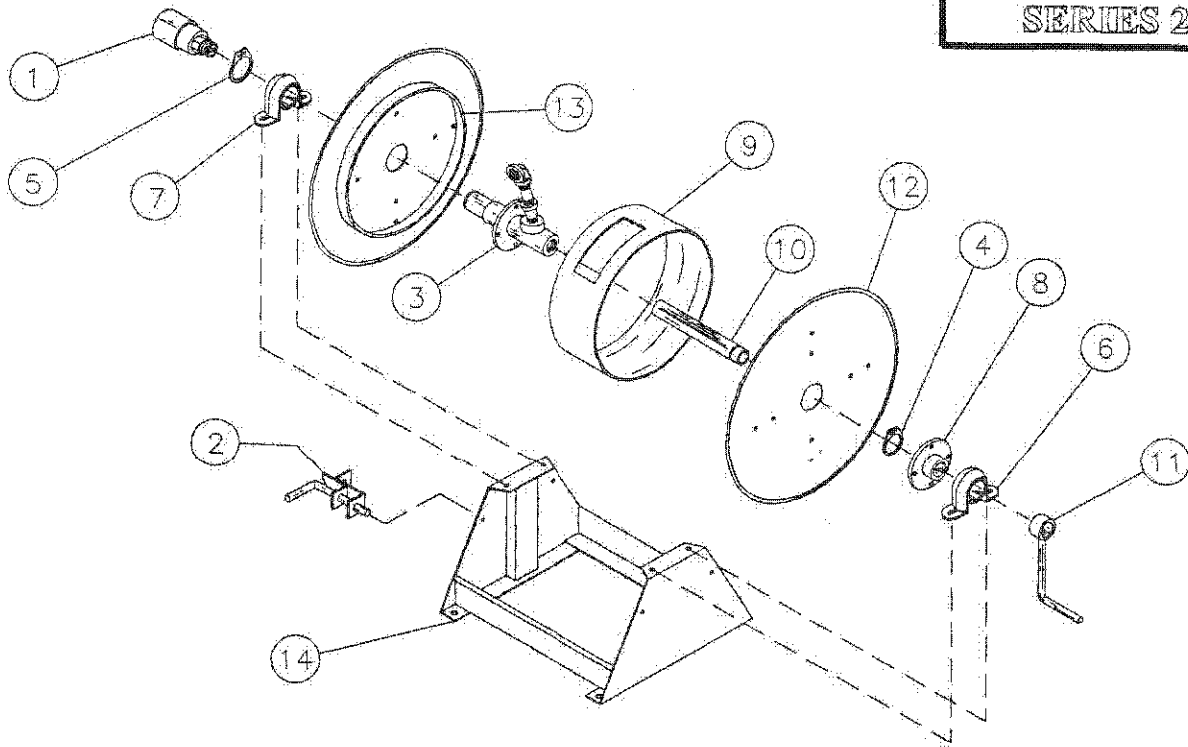


**PARTS LIST**

\* MODEL NUMBER MUST BE KNOWN TO CLARIFY PART NUMBER  
USE HOSE & CORD CATALOG FOR REPLACEMENTS

NO.	PART#	DESCRIPTION	MODEL	NO.	PART#	DESCRIPTION	MODEL
1	SA-13	CORD GUIDE with ROLLERS	ALL	22			
2	SA-54	REEL SPOOL with HUB	ALL	23			
3	SA-83	COLLECTOR RING ASSEMBLY	ALL	24			
4	SS-811	MOTOR SPRING ASSEMBLY	ALL	25			
5	F-55-20	BEARING HUB (LEFT SIDE)	ALL	26			
6	006-01	3/8 KEPS NUT	ALL	27			
7	006-07	3/8 x 1 1/2 CS BOLT	ALL	28			
8	008-01	5/8-11 HEX NUT	ALL	29			
9	019-41	SNAP BUSHING	ALL	30			
10	023-06	65 RUBBER CLAMP	ALL	31			
11	031-01	S/S SPRING	ALL	32			
12	055-17	LOCKING DEVICE CAM	ALL	NOTES:			
13	055-18	1425 GUIDE ARM	ALL				
14	065-32	BRUSH PLATE	ALL				
15	070-57	2720 COVER	ALL				
16	071-11	MOUNTING BASE 9"	ALL				
17	091-02	SPACER	ALL				
18							
19							
20							
21							

# HOSE REEL SERIES 2900

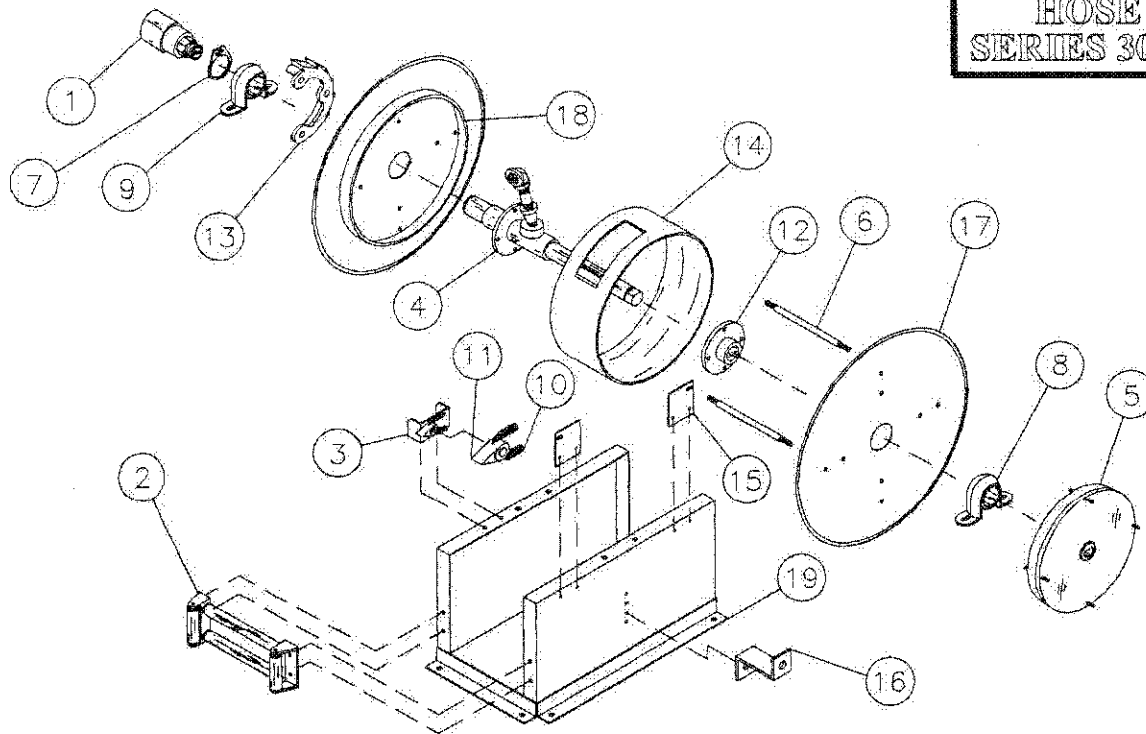


## PARTS LIST

\* MODEL NUMBER MUST BE KNOWN TO CLARIFY PART NUMBER  
USE HOSE & CORD CATALOG FOR REPLACEMENTS

NO.	PART#	DESCRIPTION	MODEL	NO.	PART#	DESCRIPTION	MODEL
1*	SA-40	SWIVEL JOINT 1/2	ALL	10*	067-01	AXLE SHAFT (A)	ALL
	020-09	SWIVEL JOINT 3/4	2905,2906,2907,2908		067-02	AXLE SHAFT (B)	2902,2904,2906,2908 2910,2912
	020-10	SWIVEL JOINT 1	2909,2910,2911,2912		067-03	AXLE SHAFT (C)	2913,2951
2	SA-26	LOCKING PIN BRACKET	ALL		067-04	AXLE SHAFT (D)	2914,2916
3*	SA-27	AXLE ASSEMBLY 1/2 SHORT	2901,2902,2903,2904 2913,2914	11	067-05	CRANK HANDLE	ALL
	SA-28	AXLE ASSEMBLY 1/2	2905,2906,2907,2908 2915,2916	12*	070-31	REEL DISC 14"	2901,2902,2913,2914
	SA-29	AXLE ASSEMBLY 3/4	2905,2906,2907,2908		070-33	REEL DISC 18"	2903,2904,2905,2906 2909,2910,2915,2916
	SA-30	AXLE ASSEMBLY 1	2909,2910,2911,2912		070-35	REEL DISC 24"	2907,2908,2911,2912
4	022-05	RETAINING RING 1 1/4	ALL	13*	070-44	DRUM SUPPORT 7"	2901,2902,2903,2904 2913,2914
5	022-06	RETAINING RING 1 1/2	ALL		070-45	DRUM SUPPORT 9"	2905,2906,2907,2908 2909,2910,2911,2912 2915,2916
6	027-01	BEARING 1 1/4	ALL	14*	071-22	REEL BASE 14 x 7	2901
7	027-02	BEARING 1 1/2	ALL		071-23	REEL BASE 18 x 7	2902
8	055-33	AXLE FLANGE	ALL		071-24	REEL BASE 22 x 7	2913
9*	066-01	DRUM 8 x 7	2901,2903		071-25	REEL BASE 29 x 7	2914
	066-02	DRUM 12 x 7	2902,2904		071-26	REEL BASE 14 x 9	2903,2905,2909
	066-03	DRUM 16 x 7	2913		071-27	REEL BASE 18 x 9	2904,2906,2910
	066-04	DRUM 20 x 7	2914		071-28	REEL BASE 22 x 9	2915
	066-05	DRUM 8 x 9	2905,2907,2909,2911		071-29	REEL BASE 26 x 9	2916
	066-06	DRUM 12 x 9	2906,2908,2910,2912		071-30	REEL BASE 14 x 12	2907,2911
	066-07	DRUM 16 x 9	2915		071-31	REEL BASE 18 x 12	2908,2912
	066-08	DRUM 20 x 9	2916				

# HOSE REEL SERIES 3000 & 3100



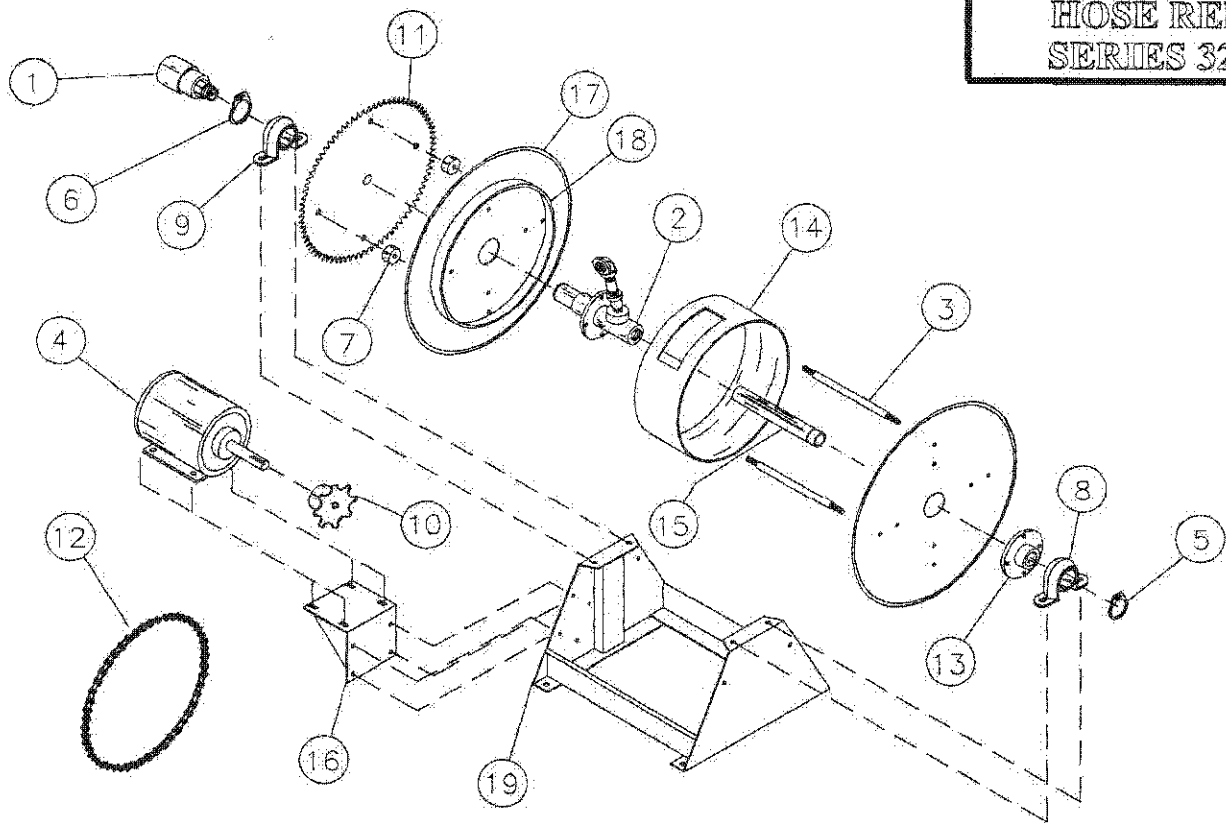
## PARTS LIST

\* MODEL NUMBER MUST BE KNOWN TO CLARIFY PART NUMBER  
USE HOSE & CORD CATALOG FOR REPLACEMENTS

NO.	PART#	DESCRIPTION	MODEL	NO.	PART#	DESCRIPTION	MODEL	
1*	SA-38	SWIVEL JOINT 1/4	3001,3101,3102	6*	018-16	TIE RODS 6"	3007,3011,3016,3020,3102	
	SA-39	SWIVEL JOINT 3/8	3001,3101,3102		018-17	TIE RODS 10"	3012,3021	
	SA-40	SWIVEL JOINT 1/2	3002,3003	7*	022-06	RETAINING RING 1 1/2	3001,3002,3003,3006,3007,3010,3011,3012,3101,3102	
	020-09	SWIVEL JOINT 3/4	3006,3007		022-07	RETAINING RING 1 3/4	3015,3016,3020,3021	
	020-10	SWIVEL JOINT 1	3010,3011,3012	8	027-01	BEARING 1 1/4	ALL	
	SA-05	SWIVEL JOINT 1 1/2	3015,3016,3020,3021		027-02	BEARING 1 1/2	3001,3002,3003,3006,3007,3010,3011,3012,3101,3102	
2	SA-19	ROLLER CASTING	ALL		027-03	BEARING 1 3/4	3015,3016,3020,3021	
3	SA-25	LOCKING CAM ASSEMBLY	ALL	10	031-01	LOCKING CAM SPRING	ALL	
4*	SA-31	AXLE ASSEMBLY 1/2	3001,3002,3003		11	055-12	LOCKING CAM	ALL
	SA-32	AXLE ASSEMBLY 3/4	3006,3007	12	055-33	AXLE FLANGE	ALL	
	SA-33	AXLE ASSEMBLY 1	3010,3011,3012	13	055-34	LOCKING RING	ALL	
	SA-34	AXLE ASSEMBLY 1 1/4	3015,3016		14*	066-09	REEL DRUM 4"	3001,3002,3003,3006,3010,3015,3101
	SA-35	AXLE ASSEMBLY 1 1/2	3020,3021	066-10		REEL DRUM 6"	3007,3011,3016,3020,3102	
	SA-36	AXLE DOUBLE 1/4	3101,3102	066-11		REEL DRUM 10"	3012,3021	
	SA-37	AXLE DOUBLE 3/8	3101,3102	15	068-03	SPRING CAN GUSSET	ALL	
5*	SS-563	MOTOR SPRING ASSEMBLY	3002		16	068-04	OFFSET SP. CAN GUSSET	ALL
	SS-583		3101		17	070-35	REEL DISC 24"	ALL
	SS-584		3001,3102		18	070-46	DRUM SUPPORT 12"	ALL
	SS-613		3010			19*	071-32	REEL BASE 10
	SS-623		3006,3011,3015,3016,3020,3021		071-33		REEL BASE 12	3007,3011,3016,3020,3102
	SS-663		3007,3012	071-34	REEL BASE 16		3012,3021	
	SS-674		3003					
6*	018-15	TIE RODS 4"	3001,3002,3003,3006,3010,3015,3101					



# HOSE REEL SERIES 3200

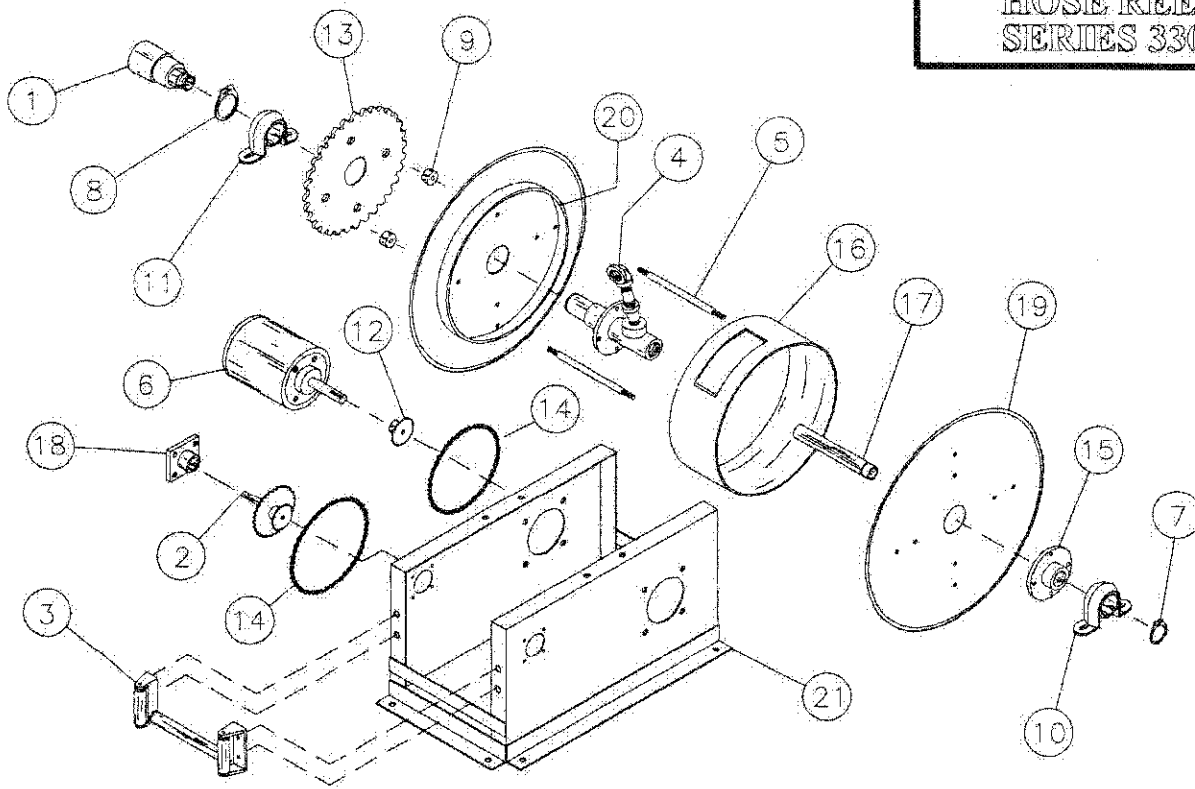


## PARTS LIST

\* MODEL NUMBER MUST BE KNOWN TO CLARIFY PART NUMBER  
USE HOSE & CORD CATALOG FOR REPLACEMENTS

NO.	PART#	DESCRIPTION	MODEL	NO.	PART#	DESCRIPTION	MODEL
1*	SA-40	SWIVEL JOINT 1/2	3201,3202,3203,3204	13	055-33	AXLE FLANGE	ALL
	020-09	SWIVEL JOINT 3/4	3205,3206,3207,3208	14*	066-05	REEL DRUM 8 x 9	3201,3205
	020-10	SWIVEL JOINT 1	3205,3206,3207,3208		066-06	REEL DRUM 12 x 9	3202,3206
2*	SA-27	AXLE CASTING 1/2	3201,3202,3203,3204		066-07	REEL DRUM 16 x 9	3203,3207
	SA-30	AXLE CASTING 1	3205,3206,3207,3208		066-08	REEL DRUM 20 x 9	3204,3208
3*	018-18	TIE RODS 10"	3201,3205	15*	067-01	AXLE SHAFT (A)	3201,3205
	018-19	TIE RODS 14"	3202,3206		067-02	AXLE SHAFT (B)	3202,3206
	018-20	TIE RODS 18"	3203,3207		067-03	AXLE SHAFT (C)	3203,3207
	018-21	TIE RODS 22"	3204,3208		067-04	AXLE SHAFT (D)	3204,3208
4*	019-31	DC ELECTRIC MOTOR	ALL	16	068-08	MOTOR MOUNT BRACKET	ALL
	019-32	DC EXPLOSION PROOF	ALL	17	070-33	REEL DISC 18"	ALL
	019-33	AC EXPLOSION PROOF	ALL	18	070-45	DRUM SUPPORT 9"	ALL
	019-40	AIR-MOTOR	ALL	19*	071-35	REEL BASE 14	3201,3205
5	022-05	RETAINING RING 1 1/4	ALL		071-36	REEL BASE 18	3202,3206
6	022-06	RETAINING RING 1 1/2	ALL		071-37	REEL BASE 22	3203,3207
7	024-12	SPACER (4 REQ)	ALL		071-38	REEL BASE 26	3204,3208
8	027-01	BEARING 1 1/4	ALL	NOTES:			
9	027-02	BEARING 1 1/2	ALL				
10	029-01	GEAR 12 TOOTH	ALL				
11	029-07	GEAR 112 TOOTH	ALL				
12	029-09	CHAIN 2'	ALL				

# HOSE REEL SERIES 3300

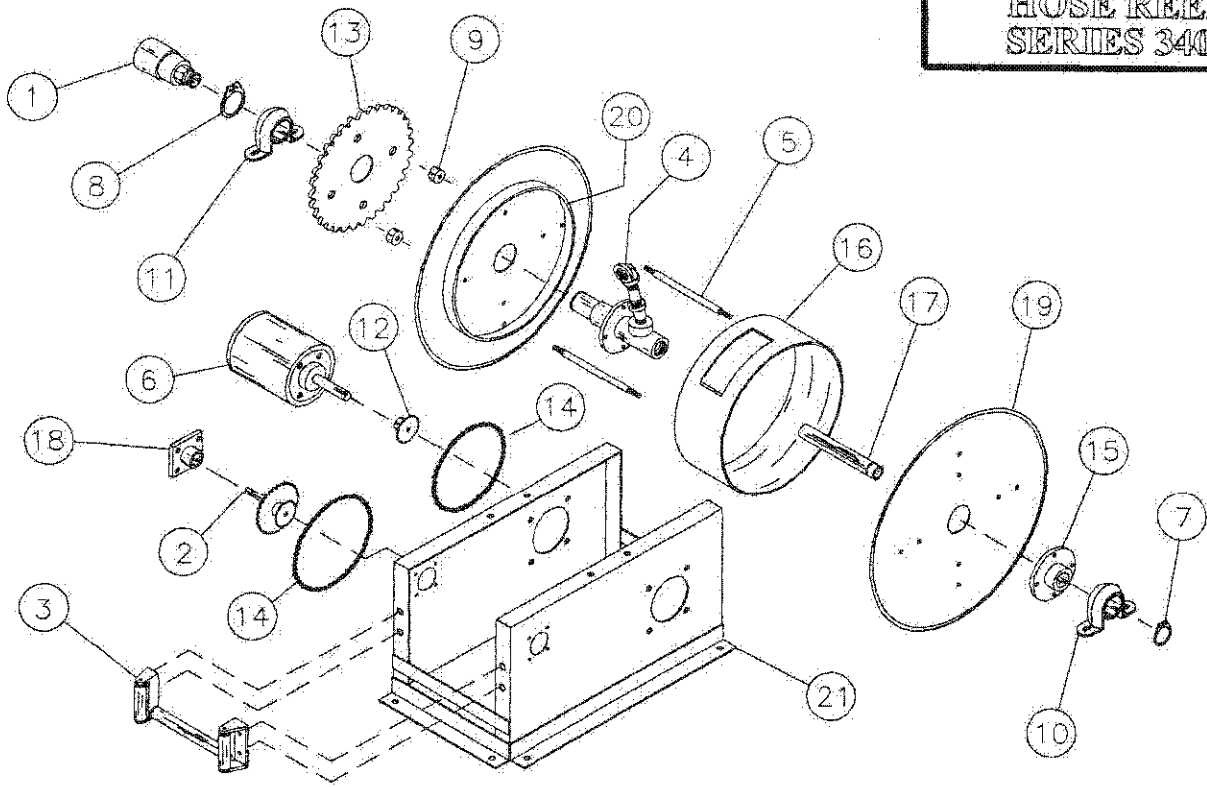


## PARTS LIST

\* MODEL NUMBER MUST BE KNOWN TO CLARIFY PART NUMBER  
USE HOSE & CORD CATALOG FOR REPLACEMENTS

NO.	PART#	DESCRIPTION	MODEL	NO.	PART#	DESCRIPTION	MODEL
1*	SA-38	SWIVEL JOINT 1/4	3301,3302,3303	13	029-04	GEAR 48 TOOTH	3301,3302,3303,3304 3305,3306,3307,3308
	SA-39	SWIVEL JOINT 3/8	3301,3302,3303	14	029-09	CHAIN 7'-6"	ALL
	SA-40	SWIVEL JOINT 1/2	3301,3302,3303	15	055-33	AXLE FLANGE	ALL
	020-09	SWIVEL JOINT 3/4	3304,3305,3306	16*	066-06	REEL DRUM 12 x 9	3301,3303,3304,3306
	020-10	SWIVEL JOINT 1	3307,3308		066-08	REEL DRUM 20 x 9	3302,3305
2	SA-08	GEAR INTERMEDIATE 12/36	ALL		066-12	REEL DRUM 12 x 12	3307
3	SA-19	ROLLER CASTING	OPTION		066-14	REEL DRUM 20 x 12	3308
4*	SA-28	AXLE ASSEMBLY 1/2	3301,3302,3303	17*	067-02	AXLE SHAFT (B)	3301,3303,3304,3306 3307
	SA-29	AXLE ASSEMBLY 3/4	3304,3305,3306		067-04	AXLE SHAFT (D)	3302,3305,3308
	SA-30	AXLE ASSEMBLY 1	3307,3308	18	068-09	BEARING PLATE	ALL
5*	018-22	TIE ROD 13"	3301,3303,3304,3306 3307	19*	070-33	REEL DISC 18"	3301,3302,3304,3305
	018-23	TIE ROD 21"	3302,3305,3308		070-35	REEL DISC 24"	3303,3306,3307,3308
6*	019-32	DC EXPLOSION PROOF	ALL	20*	070-45	DRUM SUPPORT 9"	3301,3302,3303,3304 3305,3306
	019-33	AC EXPLOSION PROOF	ALL		070-46	DRUM SUPPORT 12"	3307,3308
	019-40	AIR-MOTOR	ALL	21*	071-39	BASE ASSEMBLY 18x15x9.5	3301,3304
7	022-05	RETAINING RING 1 1/4	ALL		071-40	BASE ASSEMBLY 18x23x9.5	3302,3305
8	022-06	RETAINING RING 1 1/2	3301,3302,3303,3304 3305,3306,3307,3308		071-41	BASE ASSEMBLY 22x15x12	3303,3306,3307
9	024-12	SPACER	ALL		071-42	BASE ASSEMBLY 22x23x12	3308
10	027-01	BEARING 1 1/4	ALL	NOTES:			
11	027-02	BEARING 1 1/2	3301,3302,3303,3304 3305,3306,3307,3308				
12	029-01	GEAR 12 TOOTH	ALL				

# HOSE REEL SERIES 3400



## PARTS LIST

\* MODEL NUMBER MUST BE KNOWN TO CLARIFY PART NUMBER  
USE HOSE & CORD CATALOG FOR REPLACEMENTS

NO.	PART#	DESCRIPTION	MODEL	NO.	PART#	DESCRIPTION	MODEL
1*	020-10	SWIVEL JOINT 1	3401,3402	13*	029-05	GEAR 60 TOOTH	3403,3404,3405,3406 3407,3408,3409,3410
	SA-05	SWIVEL JOINT 1 1/2	3403,3404,3405,3406 3407,3408,3409,3410	14	029-09	CHAIN 7'-6"	ALL
2	SA-08	GEAR INTERMEDIATE 12/36	ALL	15	055-33	AXLE FLANGE	ALL
3	SA-19	ROLLER CASTING	OPTION	16*	066-12	REEL DRUM 12 x 12	3401,3403,3405,3407 3409
4*	SA-30	AXLE ASSEMBLY 1	3401,3402		066-14	REEL DRUM 20 x 12	3402,3404,3406,3408 3410
	SA-34	AXLE ASSEMBLY 1 1/4	3403,3404,3405,3406	17*	067-02	AXLE SHAFT (B)	3401,3403,3405,3407 3409
	SA-35	AXLE ASSEMBLY 1 1/2	3407,3408,3409,3410		067-04	AXLE SHAFT (D)	3402,3404,3406,3408 3410
5*	018-22	TIE ROD 13"	3401,3403,3405,3407 3409	18	068-09	BEARING PLATE	ALL
	018-23	TIE ROD 21"	3402,3404,3406,3408 3410	19*	070-35	REEL DISC 24"	3403,3404,3407,3408
6*	019-32	DC EXPLOSION PROOF	ALL		070-36	REEL DISC 30"	3401,3402,3405,3408 3409,3410
	019-33	AC EXPLOSION PROOF	ALL	20	070-46	DRUM SUPPORT 12"	ALL
	019-40	AIR-MOTOR	ALL	21*	071-43	BASE ASSEMBLY 22x15x12	3403,3407
7	022-05	RETAINING RING 1 1/4	ALL		071-44	BASE ASSEMBLY 22x23x12	3404,3408
8	022-06	RETAINING RING 1 1/2	3401,3402,3403,3404 3405,3406,3407,3408 3409,3410		071-45	BASE ASSEMBLY 28x15x14.5	3401,3405,3409
9	024-12	SPACER	ALL		071-46	BASE ASSEMBLY 28x23x14.5	3402,3406,3410
10	027-01	BEARING 1 1/4	ALL	NOTES:			
11*	027-02	BEARING 1 1/2	3401,3402				
	027-03	BEARING 1 3/4	3403,3404,3405,3406 3407,3408,3409,3410				
12	029-01	GEAR 12 TOOTH	ALL				
13*	029-04	GEAR 48 TOOTH	3401,3402				

## WARRANTY

**WARRANTY:** Hose reels and component parts manufactured by Duro Mfg. Inc. are guaranteed to be free from defects in material and workmanship for a period of one (1) year from date of invoice.

**WARRANTY:** Rubber hose not of our manufacture is guaranteed as per original manufacturers' warranty program. Rubber hose is guaranteed to be free from defects at the time it is put to use or reasonable notification of 30 days.

**WARRANTY:** Other related products sold by Duro Mfg. Inc. not of our manufacturing will be guaranteed in line with OEM warranty.

In any case, parts or units found to be defective by reason of faulty material or workmanship will be replaced at no charge, after inspection by our factory. Duro Mfg. Inc. liability shall be limited to the repair or replacement only. Maximum liability is in no case to exceed the value of Duro unit involved. No returns or charges will be accepted without prior agreement with the factory. This warranty becomes void if equipment has been tampered with or misused in other than intended design function. No responsibility will be assumed for improper choice of models, installation or varied uncontrollable field conditions. We reserve the right to make engineering changes in material and in dimensions for improving the performance of our equipment.

## TERMS AND CONDITIONS

**TERMS:** Net 30 days on approved credit.

Minimum billing \$15.00

A service charge of 1 1/2% on past due accounts to cover cost of extra accounting.

**FREIGHT:** F.O.B. Factory.

Our responsibility ends at the acceptance of material by the common carrier.

Consignee must file claim for shortages and damaged freight against common carrier if it occurs.

**RETURNS:** Material returned for credit is subject to a prior notification and a 15% handling restocking fee. Materials returned for credit not resaleable are subject to a rebuilding fee. All returns must be freight prepaid unless prior arrangements are made.

**CANCELATION FEE:** A charge will be made on any order cancelation after shipment has been made or any special order for materials not of our stock.

**QUOTATIONS:** All quotations are for immediate acceptance and are subject to any fluctuation in increased cost of materials after 30 days.

**SPEC. DESIGNS:** Non standard products to customer's specifications are cancelable on written notice, but are subject to all expenses incurred at that time. Special designs to customer's specification are not returnable.

**BUSINESS HOURS:** 7:30 AM - 4:30 PM

DISTRIBUTED BY

Printed in U.S.A.  
Catalog PL 97

**DURO MANUFACTURING, INC.**

3505 Arrowhead Drive • Carson City, Nevada 89706 • (702) 687-8866 • FAX (702) 687-8877