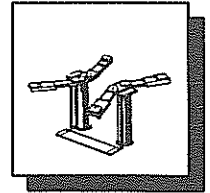




Lift Repair Catalog

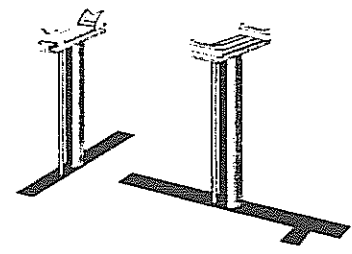
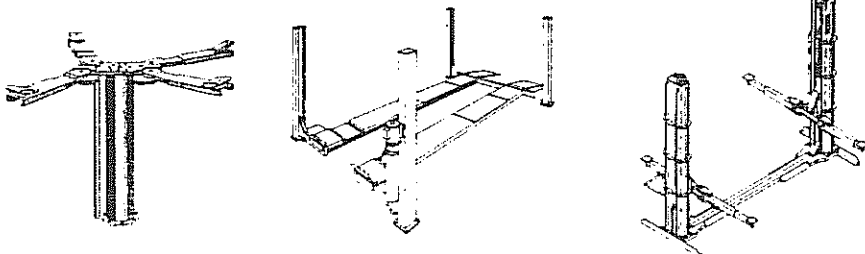


LRC9300

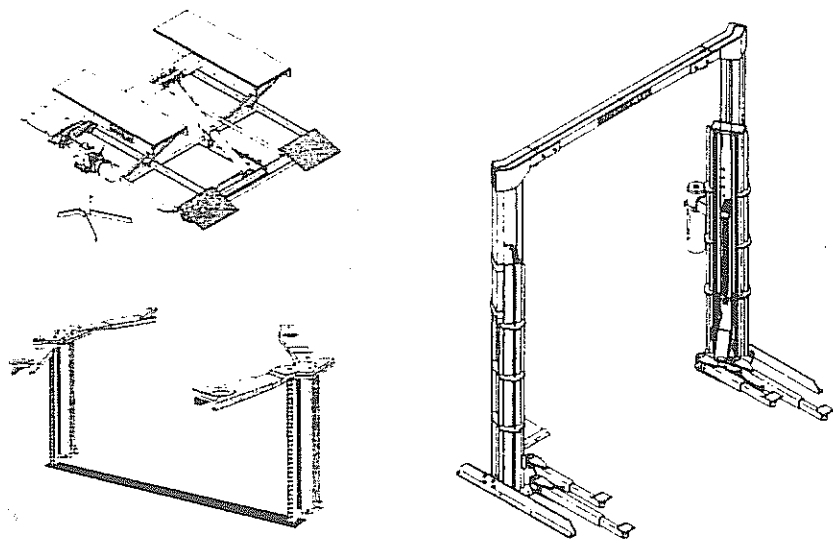
S V I International, Inc. - Lift Repair Catalog

January 1996

For Gilbarco/Manitowoc In-Ground and Surface-Mount Lifts



More is available than what is listed on these pages



Contents

Lift Packing Quick Reference	page 2
In-Ground Single Post Lift Parts	page 3
Twin Post Side By Side Lift Parts	page 4-5
Twin Post Fore and Aft Lift Parts	page 6-7
Common In-Ground Lift Parts	page 8
Surface-Mount Lift Parts ATF Models	page 9
Surface-Mount Lift Parts CFF/GFF, CBT, GBT Models	page 10-11
Low Rise Pad Lift Parts Model CTL-60	page 12

Entire Contents Copyright © S V I International, Inc. 1996

To Order Call: (800) 321-8173 or Fax: (800) 899-1784

All names, numbers, symbols and descriptions are used for reference purposes only. It is not implied that any part listed is the product of these manufacturers; however, some parts may be the actual product of these manufacturers.



For Gilbarco/Manitowoc Lifts

In-Ground Lift Packing Quick Reference

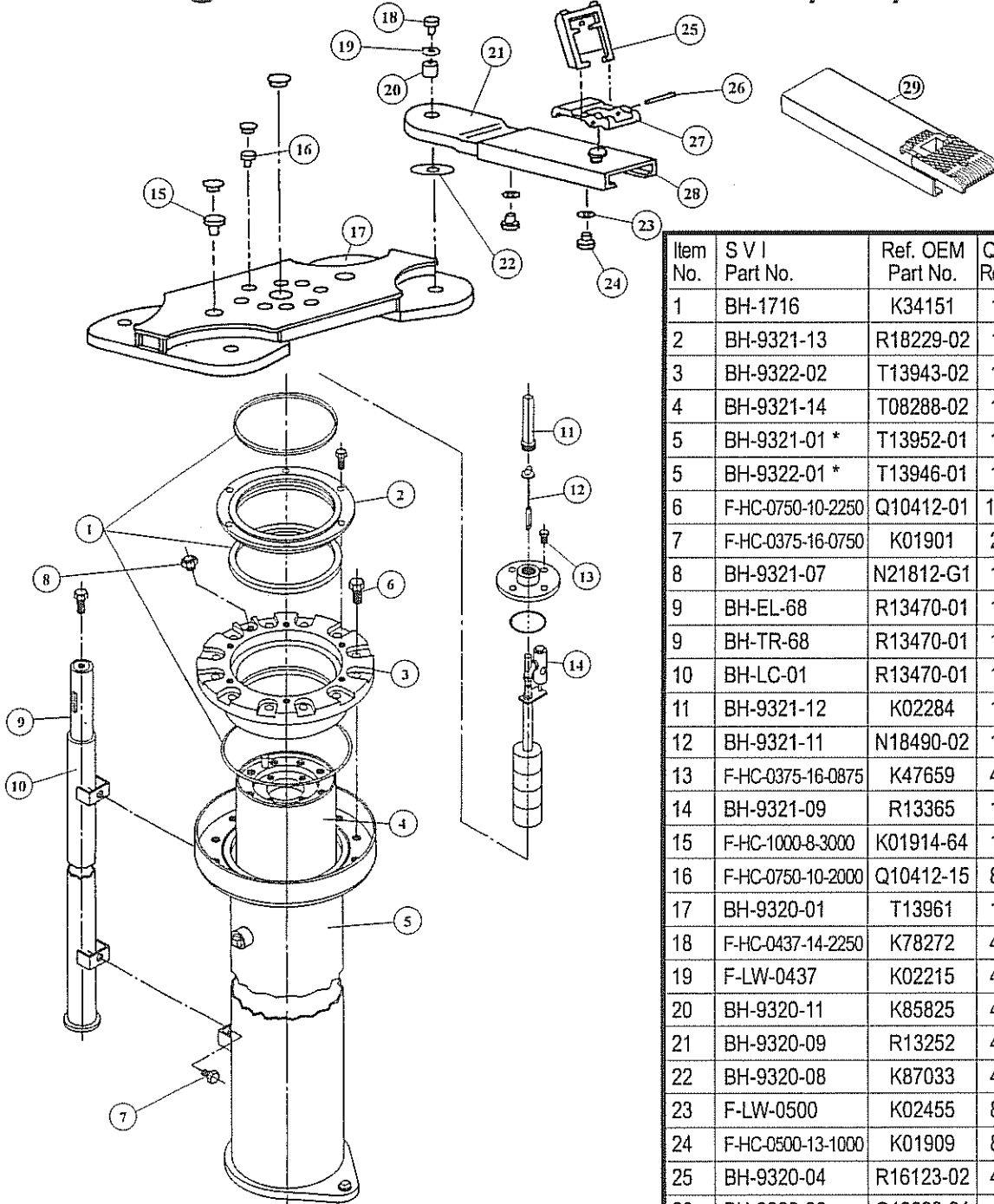
SVI Packing Kit	Ref. O.E.M. Kit No.	Reference Information	Plunger Diameter	Contents and Descriptions SVI Lift Packing Kits.
BH-1717	K34122	A12C, D, E & M, A120 & A121, Front Pistons A-1CJ, A-5CM, A-6CM (Rubber Packing)	7-1/2"	1 - 7-1/2" x 8-1/4" x 9/16" Rubber U Cup 1 - Rubber Wiper 1 - O'ring
BH-1717LS	K34122	A12C, D, E & M, A120 & A121, Front Pistons A-1CJ, A-5CM, A-6CM (Rubber Packing)	7-1/2"	1 - 7-1/2" x 8-1/4" x 9/16" Fabric Ribbed U Cup 1 - Rubber Wiper 1 - O'ring
BH-1707	K34115	A-12C30, D30, E30, A-12M30, M50, A-12030, A-12130, A-1CJ30, A-5CM30, A-6CM50 and all model numbers ending '0' to '9'. T08971, T09205, T11934, 936,937, 896, 984 or with dash # (T08971-01)	7-1/2"	1 - 7-1/2" x 8-1/4" x 1/2" Rubber U Cup 1 - Rubber Wiper 1 - O'ring
BH-1715	K34152	A-12D3A, E3A, M3A, N3A, J3A, A-5CM3A, A-6CM5A and all models ending with "A" through "Z". Also: T13916, T13921, T13922 or with dash #s	8-1/2"	1 - 8-1/2" x 9-1/2" x 5/8" Rubber U Cup 1 - Rubber Wiper Ring 1 - Felt Wiper 1 - O'ring
BH-1715LS	K34152	A-12D3A, E3A, M3A, N3A, J3A, A-5CM3A, A-6CM5A and all models ending with "A" through "Z". Also: T13916, T13921, T13922 or with dash #s	8-1/2"	1 - 8-1/2" x 9-1/2" x 5/8" Fabric Ribbed U Cup 1 - Rubber Wiper Ring 1 - Felt Wiper 1 - O'ring
BH-1718	K34114	18-30, 18-41C, 19-30, 20-30,30-30,40-30 FCF2, 4 & 6, FSC3, 5 & 6, 12 & 13	10-5/8"	1 - 10-5/8" x 11-1/2" x 5/8" Rubber U Cup 1 - Polyurethane Wiper Ring
BH-1718LS	K34114	18-30, 18-41C, 19-30, 20-30,30-30,40-30 FCF2, 4 & 6, FSC3, 5 & 6, 12 & 13	10-5/8"	1 - 10-5/8" x 11-1/2" x 5/8" Fabric Ribbed U Cup 1 - Polyurethane Wiper Ring
BH-1722	K87582	AHA-1AA, AHA-AAB, AHA-1AP, AHA-2BM, FCF2, 4 & 6, FCS 3, 5, 12 & 13, 14, 15, 18 & 19, 20, 30 & 31, 40 & 41, 78 & 79	10-5/8"	1 - 10-5/8" x 11-1/2" x 1/2" Deep Rubber U 1 - Synthetic Rubber Wiper Ring
BH-1716	K34151 K34301	A-1AA1A, 3A, A-1AB3A, A-1AN3A, A-2BM3A, A-3BM5A, A-5CM3A, A-6CM5A, T13944, 45, 46, T13952, T13959 and models ending with letters "A" to "Z"	10-5/8"	1 - 10-5/8" x 11-3/4" x 5/8" Rubber U Cup 1 - Synthetic Rubber Wiper 1 - Felt Wiper 1 - O-ring
BH-1716LS	K34151 K34301	A-1AA1A, 3A, A-1AB3A, A-1AN3A, A-2BM3A, A-3BM5A, A-5CM3A, A-6CM5A, T13944, 45, 46, T13952, T13959 and models ending with letters "A" to "Z"	10-5/8"	1 - 10-5/8" x 11-3/4" x 5/8" Fabric Ribbed U Cup 1 - Synthetic Rubber Wiper 1 - Felt Wiper 1 - O-ring
BH-1727	K34113	All 10-5/8" with model numbers ending '0' to '9' except "T" models listed above.	10-5/8"	1 - 10-5/8" x 11-3/4" x 3/4" Urethane U Cup 1 - Polyurethane Wiper
BH-1727S	K34114 K34113 K34151 K34301 K87582	Universal for most 10-5/8" Lifts Note: For 3/4" Deep U Cup remove seal support rings from bottom of stuffing box.	10-5/8"	1 - 10-5/8" x 11-3/4" x 3/4" Rubber U Cup 1 - Large Base Polyurethane Wiper 1 - Small Base Rubber Wiper 1 - Felt Wiper 1 - O-ring
BH-1785		PCF2, 4 & 6, FCS3, 5, 7, 12 & 13, 14, 15, 18, 19, 20, 30 & 31, 40 & 41, 78 & 79	10-5/8"	3 - Synthetic MM Style Rings 1 - Synthetic Rubber Wiper

To Order Call: (800) 321-8173 or Fax: (800) 899-1784

All names, numbers, symbols and descriptions are used for reference purposes only. It is not implied that any part listed is the product of these manufacturers; however, some parts may be the actual product of these manufacturers.

For Gilbarco/Manitowoc Lifts

Single Post Lift models A-1AB1A, 3A, A-1AA1A, 3A



Item No.	SVI Part No.	Ref. OEM Part No.	Qty Req	Description
1	BH-1716	K34151	1	Hoist Packing Kit
2	BH-9321-13	R18229-02	1	Wiper Ring Retainer
3	BH-9322-02	T13943-02	1	Upper Bearing
4	BH-9321-14	T08288-02	1	Plunger (Semi-Hyd.)
5	BH-9321-01 *	T13952-01	1	Plunger & Cyl Ass'y. (Semi-Hyd.)
5	BH-9322-01 *	T13946-01	1	Plunger & Cyl Ass'y. (Full-Hyd.)
6	F-HC-0750-10-2250	Q10412-01	12	Hex Head Cap Screw
7	F-HC-0375-16-0750	K01901	2	Hex Head Cap Screw
8	BH-9321-07	N21812-G1	1	Air Vent
9	BH-EL-68	R13470-01	1	Safety Leg/Non-Rotator
9	BH-TR-68	R13470-01	1	Top Release Safety Leg
10	BH-LC-01	R13470-01	1	Safety Leg Casing (Retrofit)
11	BH-9321-12	K02284	1	Pipe Plug A-1AA1A (Semi)
12	BH-9321-11	N18490-02	1	Oil Gauge (Semi-Hyd.)
13	F-HC-0375-16-0875	K47659	4	Hex Head Cap Screw
14	BH-9321-09	R13365	1	Low Oil Control (Semi-Hyd.)
15	F-HC-1000-8-3000	K01914-64	1	Hex Head Cap Screw
16	F-HC-0750-10-2000	Q10412-15	8	Hex Head Cap Screw
17	BH-9320-01	T13961	1	Crosshead Bolster Ass'y.
18	F-HC-0437-14-2250	K78272	4	Hex Head Cap Screw
19	F-LW-0437	K02215	4	Lockwasher
20	BH-9320-11	K85825	4	Swing Arm Pivot
21	BH-9320-09	R13252	4	Swing Arm
22	BH-9320-08	K87033	4	Swing Arm Washer
23	F-LW-0500	K02455	8	Lockwasher
24	F-HC-0500-13-1000	K01909	8	Hex Head Cap Screw
25	BH-9320-04	R16123-02	4	Pick up Pad
26	BH-9320-06	Q10038-04	4	Spiral Pin
27	BH-9320-05	R12709-02	4	Swivel Base Pad
28	BH-9320-07	R12710-02	4	Sleeve Base Ass'y.
29	BH-9320-13	N20366-01	4	Sleeve and Adapter Ass'y.
15-29	BH-9320	K34104	1	Complete Superstructure

Lift Oil Tanks for Full Hydraulic Lifts

Item No.	SVI Part No.	Ref. OEM Part No.	Qty Req	Description
	BH-9802 *	R18219-G1	1	Oil Tank with Bottom Outlet
	BH-9802-T *	R18219-G1	1	Oil Tank with Top Outlet

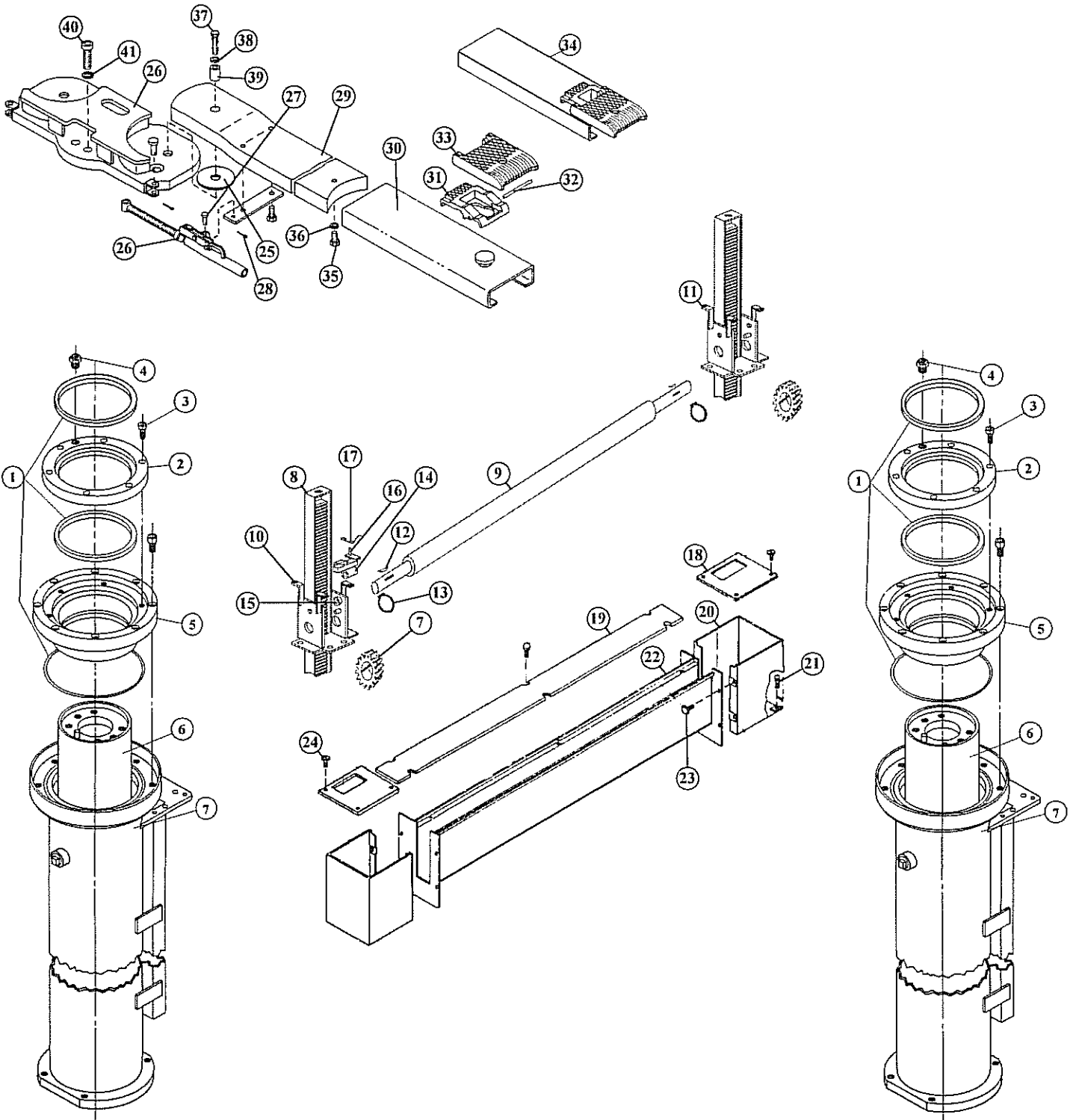
* For Fiberglass Coating add "FG" to part number

To Order Call: (800) 321-8173 or Fax: (800) 899-1784

For Gilbarco/Manitowoc Lifts

Twin Post Side By Side Lift Models

A-12D3, A-12E3, A-12L3, A-12N



To Order Call: (800) 321-8173 or Fax: (800) 899-1784

All names, numbers, symbols and descriptions are used for reference purposes only. It is not implied that any part listed is the product of these manufacturers; however, some parts may be the actual product of these manufacturers.



For Gilbarco/Manitowoc Lifts

Twin Post Side By Side Lift Parts List

Item No.	SVI Part No.	Ref. OEM Part No.	Qty Req	Description
1	BH-1715	K34152	2	Hoist Packing Kits (8-1/2")
1	BH-1717	K34122	2	Hoist Packing Kits (7-1/2")
2	BH-9313-32	T13915-01	2	Wiper Ring Retainer (8-1/2")
2	BH-9313-40	R13052-11	2	Wiper Ring Retainer (7-1/2")
3	F-SC-0375-16-0750	Q10034-28	12	Socket Head Cap Screw
4	BH-9321-07	N21812-G1	2	Air Vent
5	BH-9313-33	T13911-02	2	Upper Bearing (8-1/2")
5	BH-9321-04	T13943-03	2	Upper Bearing (7-1/2")
6	BH-9313-34	K92930	2	Plunger (8-1/2") 12D & 12L
6	BH-9313-35	K92931	2	Plunger (8-1/2") 12E & 12N
6	BH-9321-03	T13948-G1	2	Plunger (7-1/2")
6	BH-9321-03A	T11935-04	2	Plunger (7-1/2")
7	BH-9311	K87046	2	Pinion Gear
8	BH-9310	N19253	2	Rack Bar
9	BH-9312-00	N19303-01	1	40" Equalizer Shaft
9	BH-9312-01	N19303-03	1	57-1/2" Equalizer Shaft
9	BH-9312-02	N19303-02	1	89" Equalizer Shaft
10	BH-9314	R13422	1	Left Equalizer Bracket
11	BH-9315	R13423	1	Right Equalizer Bracket
12	BH-9618-06	K07536-01	2	Woodruff Key
13	BH-9614-05	K65235-24	2	Retaining Ring
14	BH-9313-23	R13382	1	Automatic Lock Latch
15	BH-9313-24	K87045	1	Latch Shaft
16	BH-9313-21	K88435	1	Auto Lock Latch Handle
17	BH-9313-25	N19704	1	Auto Lock Latch Spring
14-17	BH-9312-23C		1	Automatic Lock Latch Kit **
9-13	BH-9312-40		1	40" Equalizer Assembly
9-13	BH-9312-57		1	57-1/2" Equalizer Assembly
9-13	BH-9312-89		1	89" Equalizer Assembly
7-13	BH-9312-40C		1	*Complete 40" Equalizer Ass'y.
7-13	BH-9312-57C		1	*Complete 57" Equalizer Ass'y.
7-13	BH-9312-89C		1	*Complete 89" Equalizer Ass'y.
7-17	BH-9312-40LC		1	*Complete 40" Ass'y. with Lock

Item No.	SVI Part No.	Ref. OEM Part No.	Qty Req	Description
7-17	BH-9312-57LC		1	*Complete 57" Ass'y. with Lock
7-17	BH-9312-89LC		1	*Complete 89" Ass'y. with Lock
18	BH-9313-08	R13105	2	Equalizer Box End Cover
19	BH-9313-10A	R13065-02	1	Eq. Box Center Cover 40"
19	BH-9313-10B	R13065-01	1	Eq. Box Center Cover 57"
19	BH-9313-10C	R13065	1	Eq. Box Center Cover 89"
20	BH-9313-04	N19263	2	Equalizer Box End Section
21	F-HC-0250-20-0500	K05287	4	Hex Head Bolt
22	BH-9313-03A	N19271-04	1	Eq. Box Center Section 40"
22	BH-9313-03B	N19271-01	1	Eq. Box Center Section 57"
22	BH-9313-03C	N19271	1	Eq. Box Center Section 89"
23	F-HC-0250-20-0500	K05287	8	Hex Head Bolt
24	F-MS-0250-20-0750	K02879	8	Round Head Screw
25	BH-9320-08	K87033	4	Swing Arm Washer
26	BH-9320-09L	R18254-G2	2	Left Arm Restraint
26	BH-9320-09R	R18254-G1	2	Right Arm Restraint
27	F-CV-0500-1500	R18230-245	4	Clevis Pin
28	F-CP-125-1000	K02128	8	Cotter Pin
29	BH-9324-09	N20275	4	Swing Arm
29	BH-9324-09A	N21841	4	Swing Arm Restraint Style
30	BH-9324-11	R12956-02	4	Sliding Base Assembly
31	BH-9320-05	R12709-02	4	Swivel Base Assembly
32	BH-9320-06	Q10038-04	4	Swivel Pin
33	BH-9320-04	R16123-02	4	Pick Up Pad
34	BH-9324-10	N20366-02	4	Sleeve and Adapter Ass'y.
35	F-HC-0500-13-1000	K01909	12	Hex Head Cap Screw
36	F-LW-0500	K02455	4	Lockwasher
37	F-HC-0437-14-2250	K78272	4	Hex Head Cap Screw
38	F-LW-0437	K02215	4	Lockwasher
39	BH-9320-11	K85825	4	Swing Arm Pivot
40	F-SC-0750-10-2750	Q10035-34	8	Socket Head Cap Screw
41	F-LW-0750	K02216	8	Lockwasher

* Complete Equalizer Assemblies include Rack Bars, Pinion Gears, plus Equalizer Assembly Components

** Automatic Lock Latch kit includes everything necessary to upgrade or replace the lock assembly. Includes hardware.

*** For Fiberglass Coating add "FG" to part number.

Lift Oil Tanks

Item No.	SVI Part No.	Ref. OEM Part No.	Qty Req	Description
	BH-9802 ***	R18219-G1	1	Oil Tank with Bottom Outlet
	BH-9802-T ***	R18219-G1	1	Oil Tank with Top Outlet

To Order Call: (800) 321-8173 or Fax: (800) 899-1784

For Gilbarco/Manitowoc Lifts

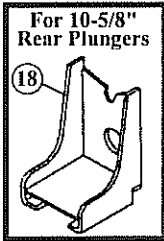
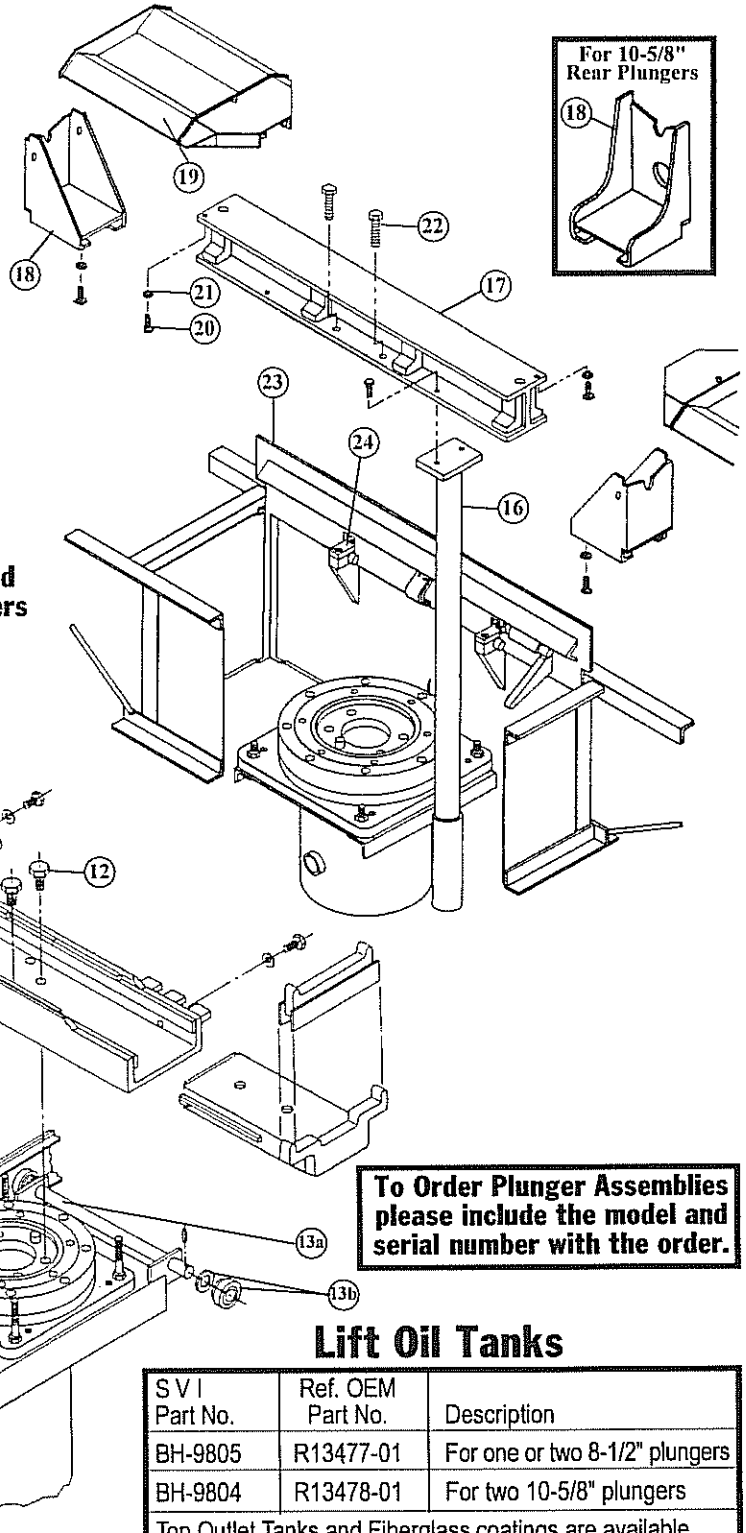
Fore and Aft Lifts

Models with 8-1/2" Plungers:

A-12M3A, A-12M5A, Front plunger of A-5CM3A, A-6CM5A, A-12J3A

Models with 10-5/8" Plungers:

A-2BM3A, A-3BM5A, Rear plunger of A-5CM3A, A-6CM5A, Front plunger of A-3FM5A

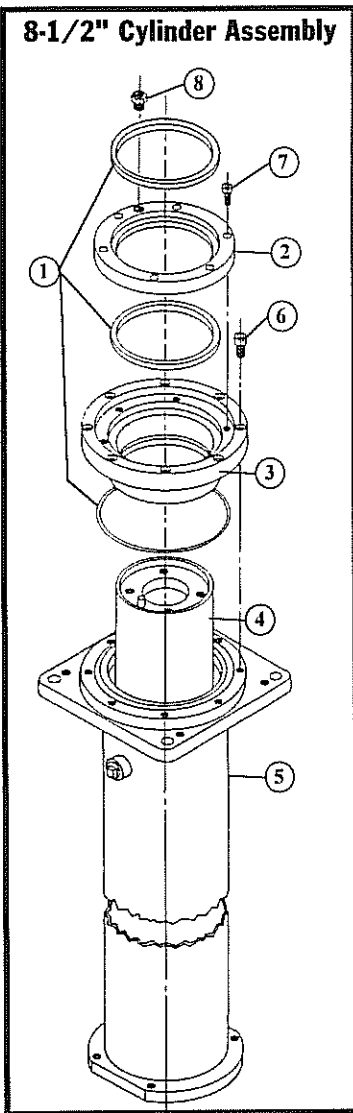


8-1/2" Plungers Pictured
Parts for 10-5/8" Plungers
listed on page 7

**To Order Plunger Assemblies
please include the model and
serial number with the order.**

Lift Oil Tanks

SVI Part No.	Ref. OEM Part No.	Description
BH-9805	R13477-01	For one or two 8-1/2" plungers
BH-9804	R13478-01	For two 10-5/8" plungers
Top Outlet Tanks and Fiberglass coatings are available.		



8-1/2" Cylinder Assembly

To Order Call: (800) 321-8173 or Fax: (800) 899-1784

All names, numbers, symbols and descriptions are used for reference purposes only. It is not implied that any part listed is the product of these manufacturers; however, some parts may be the actual product of these manufacturers.

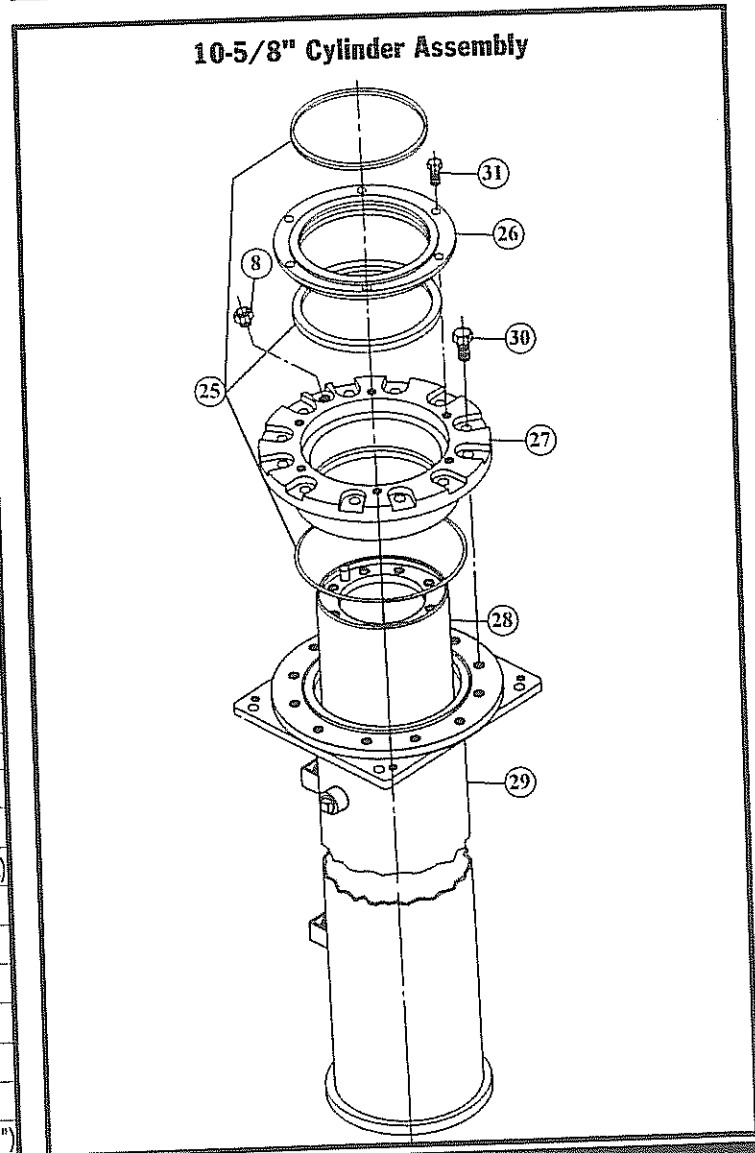


For Gilbarco/Manitowoc Lifts

Parts List for all Fore and Aft Lifts

Item No.	SVI Part No.	Ref. OEM Part No.	Qty Req	Description
1	BH-1715	K34152	1-2	Hoist Packing Kit (8-1/2")
2	BH-9313-32	T13915-01	1-2	Wiper Ring Retainer (8-1/2")
3	BH-9313-33	T13911-02	1-2	Upper Bearing (8-1/2")
4	BH-9341-06	T13912-G2	1	Front Plunger Ass'y. (8-1/2")
4	BH-9341-07	T13912-G3	1	Rear Plunger Ass'y. (8-1/2")
5	BH-9341-08	T13919-G1	1	Front Cylinder Ass'y. (8-1/2")
5	BH-9341-09	T13919-G2	1	Rear Cylinder Ass'y. (8-1/2")
6	F-SC-0500-13-2000	Q10034-82	16	Socket Head Cap Screw
7	F-SC-0375-16-0750	Q10034-28	12	Socket Head Cap Screw
8	BH-9321-07	N21812-G1	2	Air Vent
9	BH-9341-10	T13930-02	1	Front Saddle (8-1/2")
9	BH-9341-11	T13949	1	Front Saddle (10-5/8")
9	BH-9341-12	T13930-03	1	Front Saddle (A-12J3A 8-1/2")
10	BH-9341-13	R13418	2	Front Sliding Adapter (8-1/2")
10	BH-9340-40	R13323	2	Front Sliding Adapter (10-5/8")
11	BH-9341-14	R13424	2	Height Adapter
12	F-HC-0750-10-2250	Q10412-01	4	Hex Head Bolt
13a	BH-9340-02	K88533	2	Carriage Axle only (8-1/2")
13a	BH-9340-05	N20283	2	Carriage Axle only (10-5/8")
13b	BH-9340-01	K88995	4	Axle Wheel only (8-1/2")
13b	BH-9340-04	K89017	4	Axle Wheel only (10-5/8")
14	BH-9341-15	N20234-01	1	Safety Leg Casing (8-1/2")
14	BH-9341-16	N21352	1	Safety Leg Casing (10-5/8")
15	BH-EL-68	R13470-07	1	Safety Leg (Foot Release)
15	BH-TR-68	R13470-07	1	Safety Leg (Top Release)
16	BH-9341-04	R13471-01	1	Rear Safety Leg
17	BH-9350-01	T13929	1	Rear Saddle (8-1/2")
17	BH-9340-08	T13934	1	Rear Saddle (10-5/8")
18	BH-9350-02	R13177	2	Rear Adapter (8-1/2")
18	BH-9340-07	R13468	2	Rear Adapter (10-5/8")
19	BH-9341-17	T09478	opt	Wheel Adapter Ass'y (A-12M3A)
20	F-HC-0375-16-1000	K01902	6	Hex Head Cap Screw
21	F-HN-0375-16	K01943	6	Hex Nut
22	F-HC-0750-10-2250	K01909	2	Hex Head Cap Screw
23	BH-9341-18	R16249	2	Cover Door
24	BH-9341-14	K88461	4	Hinge Door Top Member
25	BH-1716	K34151	1-2	Hoist Packing Kit (10-5/8")
26	BH-9321-13	R18229-02	1-2	Wiper Ring Retainer (10-5/8")

Item No.	SVI Part No.	Ref. OEM Part No.	Qty Req	Description
27	BH-9321-04	T13943-03	1-2	Upper Bearing (10-5/8")
28	BH-9341-20	T13935-G1	1-2	Plunger Ass'y. (10-5/8")
29	BH-9341-21	T13938-G2	1	Casing (10-5/8" manual lock front)
29	BH-9341-22	T13938-G1	1	Casing (10-5/8" auto lock front)
29	BH-9341-23	T13939-G1	1	Casing (10-5/8" Rear)
30	F-HC-0750-10-2250	Q10412-01	12	Hex Head Cap Screw
31	F-HC-0437-14-1500	K01907	6	Hex Head Cap Screw
	BH-9340-31	K90133	1	Air Cylinder for Auto Lock



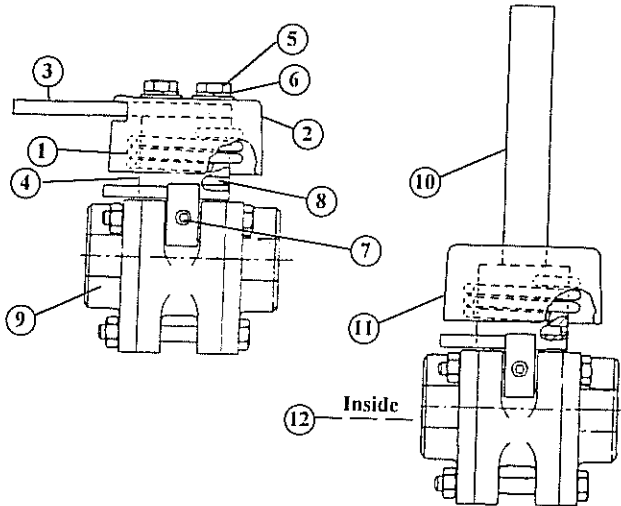
To Order Call: (800) 321-8173 or Fax: (800) 899-1784

All names, numbers, symbols and descriptions are used for reference purposes only. It is not implied that any part listed is the product of these manufacturers; however, some parts may be the actual product of these manufacturers.

For Gilbarco/Manitowoc Lifts

Parts Common to most In-Ground Lifts

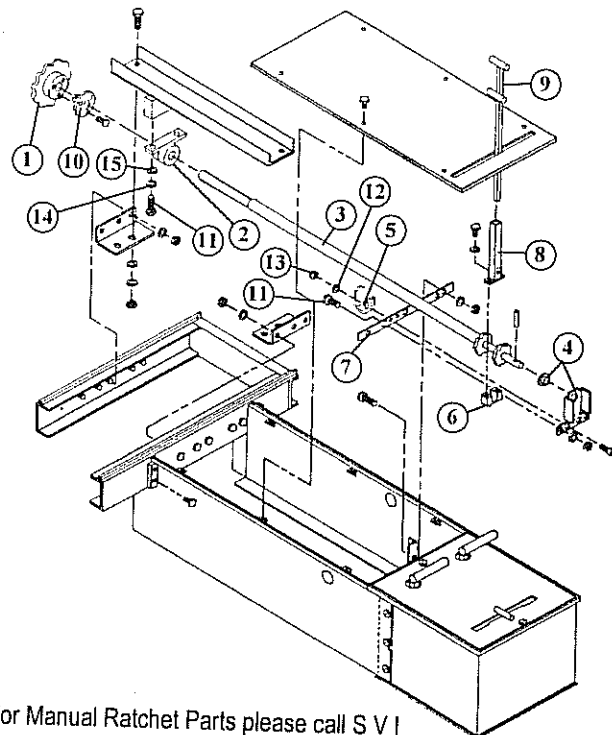
Oil Control Valves and Parts



Item No.	S V I Part No.	Ref. OEM Part No.	Qty Req	Description
	BH-9323	R13325	1	Wall Mount Oil Control Valve
	BH-9323-11	R14467	1	Floor Mount Oil Control Valve
1	BH-9323-01	N19628	1	Valve Spring
2	BH-9323-02	N19630-01	1	Valve Handle Cover
3	BH-9323-03	R14641-02	1	Valve Handle
4	BH-9323-04	N19626	1	Valve Mandrel Assembly
5	F-HC-0375-16-0750	K01901	2	Hex Head Cap Screw
6	F-LW-0375	K50775	2	Lockwasher
7	BH-9323-06	K82287-24	1	Self Locking Set Screw
8	BH-9323-07	Q10729-01	1	Shear Proof Pin
9	BH-9323-10	N19596	1	Oil Valve Body
10	BH-9323-12	N19625	1	Oil Valve Shaft and Mandrel
11	BH-9323-13	N19630-02	1	Valve Handle Cover
12	BH-9323-14	N19702	1	Ball Valve Stem (not shown)
12	BH-9323-15	N19633-02	1	Dynaquip Ball (not shown)
12	BH-9323-20	N19633-03	1	Seal Kit (not shown)

Ratchet Assembly Components

Item No.	S V I Part No.	Ref. OEM Part No.	Qty Req	Description
1	BH-9340-32	K90615	2	Sprocket
2	BH-9340-33	K90618	1	Pillow Block
3	BH-9340-34	N21717-01	1	Sprocket Shaft Assy. 10-5/8"
3	BH-9340-34A	N21717-02	1	Sprocket Shaft Assy. 8-1/2"
4	BH-9340-35	N21470	1	Ratchet Support Assembly
5	BH-9340-36	K95071	1	Stop Bracket
6	BH-9340-39	K90609	1	Ratchet Pivot Block
7	BH-9340-47	N21460	1	Ratchet Support Bar
8	BH-9340-48	N23035	1	Handle Holder Assembly
9	BH-9340-49	R16171-01	1	Ratchet Handle
10	BH-9340-50	K90616	2	Split Taper Bushing
11	F-HC-0375-16-1000	K01902	12	Hex Head Cap Screw
12	F-LW-0250	K43948	4	Lock Washer
13	F-HN-0250-20	K01941	2	Hex Nut
14	F-LW-0375	K50775	18	Lock Washer
15	F-FW-0375-SAE	K02206	8	Flat Washer



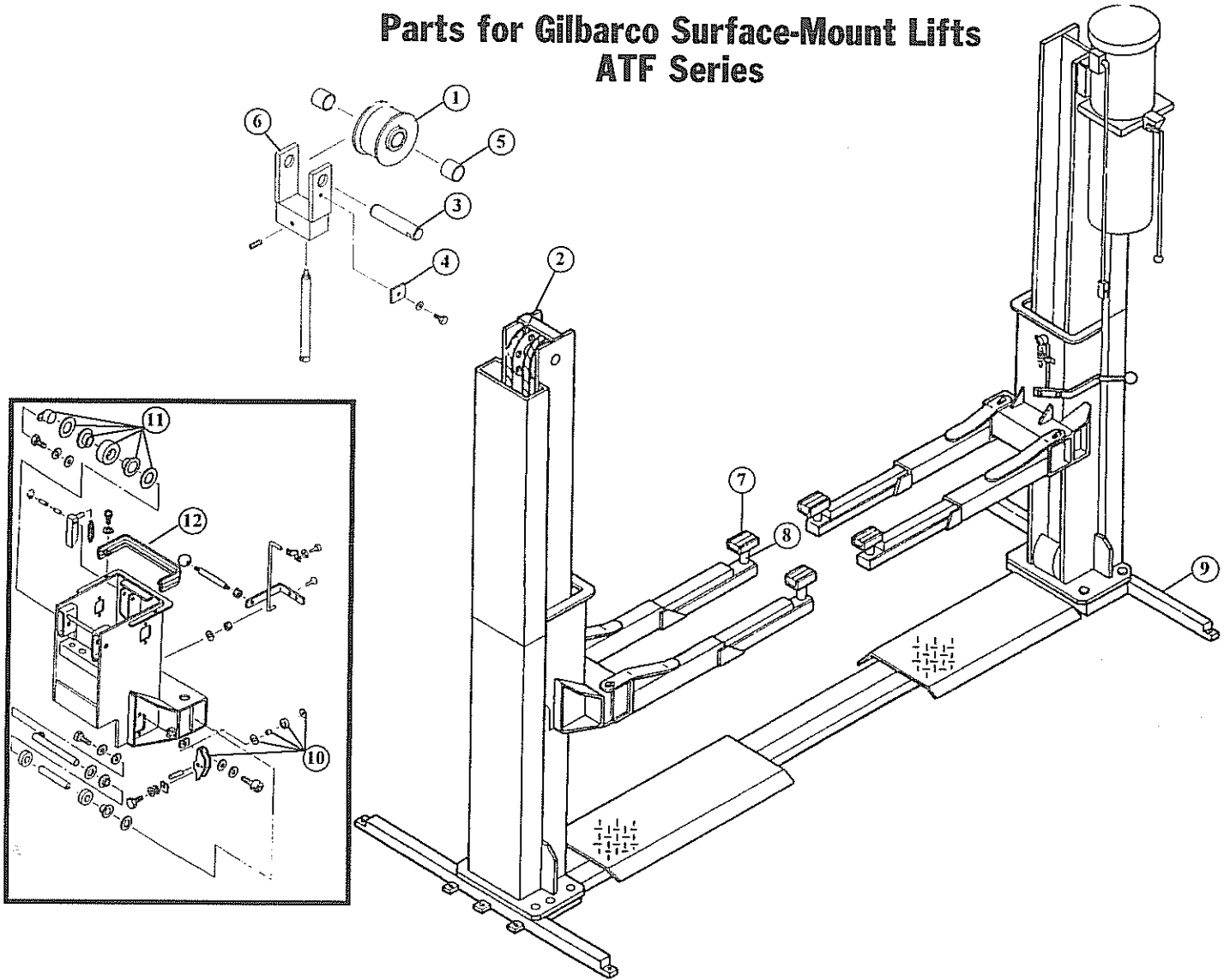
For Manual Ratchet Parts please call S V I

To Order Call: (800) 321-8173 or Fax: (800) 899-1784

All names, numbers, symbols and descriptions are used for reference purposes only. (It is not implied that any part listed is the product of these manufacturers; however, some parts may be the actual product of these manufacturers.)

For Gilbarco/Manitowoc Lifts

Parts for Gilbarco Surface-Mount Lifts ATF Series



Item No.	S V I Part No.	Ref. OEM Part No.	Qty Req	Description
1	BH-7351-07	R18220-02	1	Pulley (chain)
2	BH-7350-03	R18220-01	4	Pulley
2	BH-7350-04	R18220-10	2	Cable
3	BH-7350-09	R18220-34	1	Shaft
4	BH-7350-93	R18220-61	1	Shaft Retainer
5	BH-7351-10	R18220-15	2	Bearing
6	BH-7351-08	R18220-33	1	Pulley Support
7	BH-7352-03	K34314	4	Pad
8	BH-7352-02	R18220-51	4	Pickup Pad Support

Item No.	S V I Part No.	Ref. OEM Part No.	Qty Req	Description
8	BH-7352-01	K34155	4	Height Extension Adapter *
9	BH-7351-11	R18220-75	1	Aux. Base Frame
10	BH-7351-01	R18220-300	2	Side Roller Kit (ATF70/70B)
10	BH-7351-04	R18220-303	2	Side Roller Kit (ATF55)
11	BH-7351-02	R18220-301	1	Drive Carriage Roller Kit
11	BH-7351-03	R18220-302	1	Slave Carriage Roller Kit
12	BH-7350-94	R18220-13	2	Buffer
12	BH-7350-95	R18220-63	2	Buffer Support
	BH-7351-05	N21757	1	Connector and Cable Ass'y.

* Not Pictured.

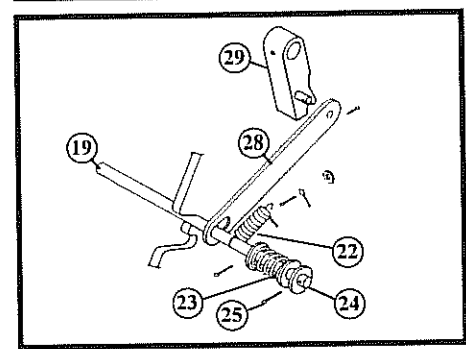
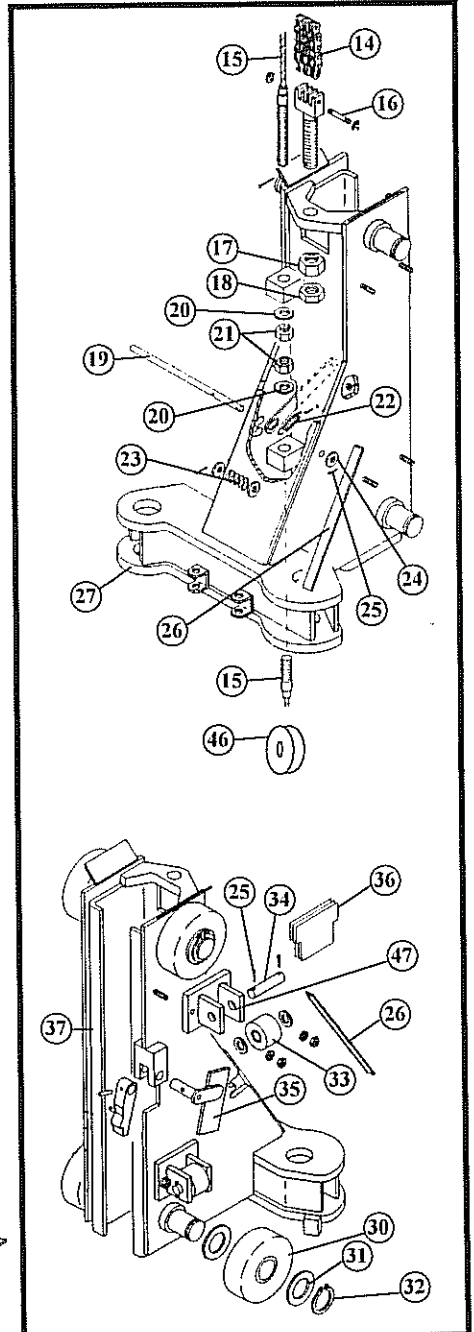
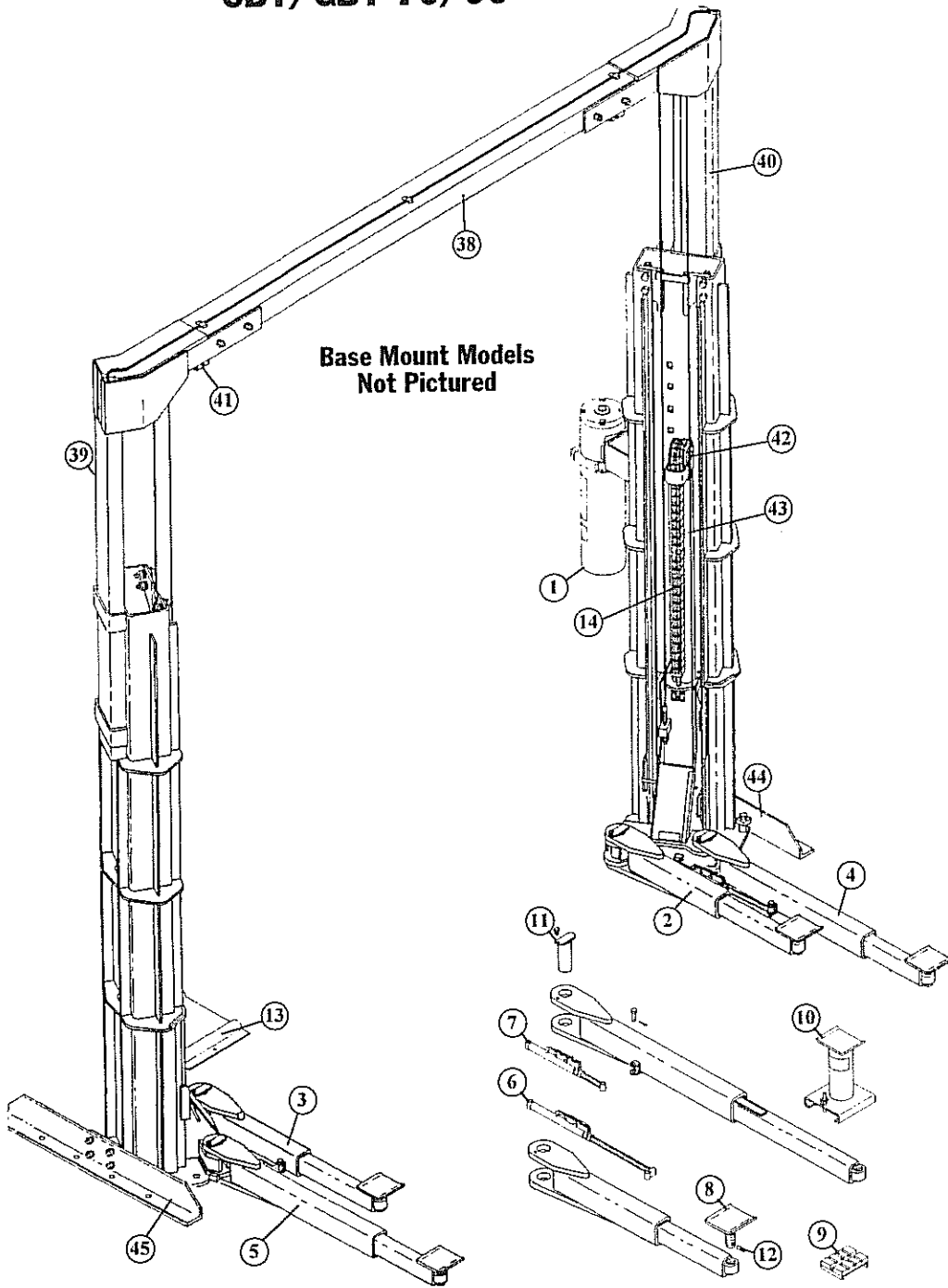
To Order Call: (800) 321-8173 or Fax: (800) 899-1784

All names, numbers, symbols and descriptions are used for reference purposes only. It is not implied that any part listed is the product of these manufacturers; however, some parts may be the actual product of these manufacturers.

For Gilbarco/Manitowoc Lifts

Parts for Surface-Mount Lifts
CFF/GFF 70/90
CBT/GBT 70/90

Base Mount Models
 Not Pictured



To Order Call: (800) 321-8173 or Fax: (800) 899-1784

All names, numbers, symbols and descriptions are used for reference purposes only. It is not implied that any part listed is the product of these manufacturers; however, some parts may be the actual product of these manufacturers.



For Gilbarco/Manitowoc Lifts

Parts List for Surface-Mount Lifts

Item No.	S V I Part No.	Ref. OEM Part No.	Qty Req	Description
1	BH-7006-01	C-723-23	1	Power Unit (Single Phase)
2	BH-7350-60	C-675-44	1	Short Arm Ass'y (Drive Side)
2	BH-7350-61	C675-61	1	Short Drive Side Arm (CFF-70N)
2	BH-7350-70	C-681-30	1	Short Drive Side Arm (CFF-90)
2	BH-7350-68	C-681-01	2	Short Arm (GFF-90 Gilbarco)
2	BH-7350-76	C-690-20	2	Arm Ass'y. Right (CBT-70)
2	BH-7350-79	C-696-15	2	Arm Ass'y. Right (CBT-90)
2	BH-7350-58	C-675-17	2	Short Arm (GFF-70 Gilbarco)
3	BH-7350-61	C-675-45	1	Short Arm Ass'y. (Slave Side)
3	BH-7350-62	C-675-62	1	Short Slave Side Arm (CFF-70N)
3	BH-7350-71	C-681-31	1	Short Slave Side Arm (CFF-90)
3	BH-7350-69	C-681-03	2	Long Arm (GFF-90 Gilbarco)
3	BH-7350-77	C-690-21	2	Arm Ass'y. Left (CBT-70)
3	BH-7350-80	C-696-16	2	Arm Ass'y. Left (CBT-90)
4	BH-7350-62	C-675-46	1	Long Arm Ass'y. (Drive Side)
4	BH-7350-72	C-681-32	1	Long Drive Side Arm (CFF-90)
4	BH-7350-57	C-675-16	2	Long Arm (GFF-70 Gilbarco)
4	BH-7350-75	C-690-08	4	Arm Ass'y (GBT-70 Gilbarco)
5	BH-7350-63	C-675-47	1	Long Arm Ass'y. (Slave Side)
5	BH-7350-73	C-681-33	1	Long Slave Side Arm (CFF-90)
6	BH-7350-65	C-675-49	2	Arm Restraint for Short Arm
7	BH-7350-64	C-675-48	2	Arm Restraint for Long Arm
8	BH-7350-44	B-100-62	4	Lift Pad Base
9	BH-7350-00	K93223	4	Rubber Arm Pad
10	BH-7352-20		4	6" Slip on Height Extension
11	BH-7351-12	B-100-150	4	Arm Pin (CFF-70)
11	BH-7350-43	B-100-61	4	Arm Pin (GFF-70 Gilbarco)
11	BH-7351-13	B-109-46	4	Arm Pin (CFF-90)
11	BH-7350-47	B-109-16	4	Arm Pin (GFF-90 Gilbarco)
11	BH-7351-14	B-115-29	4	Arm Pin (CBT-70)
11	BH-7351-15	B-120-19	4	Arm Pin (CBT-90)
12	RP-125-1000	A-491-102	4	Roll Pin
13	BH-9701	T07915	1	Wheel Spotter Dish
14	BH-7029	A-494-62	1	Leaf Chain
15	BH-7350-01	B-100-43	2	Equalizer Cable (CFF-70)
15	BH-7350-45	B-100-89	2	Equalizer Cable (CFF-70S)
15	BH-7351-16	B-100-95	2	Equalizer Cable (CFF-70N)
15	BH-7350-46	B-109-15	2	Equalizer Cable (CFF-90)
15	BH-7351-17	R18230-98	2	Equalizer Cable (CFF-90A)
15	BH-7351-18	B-115-44	2	Equalizer Cable (CBT-70)

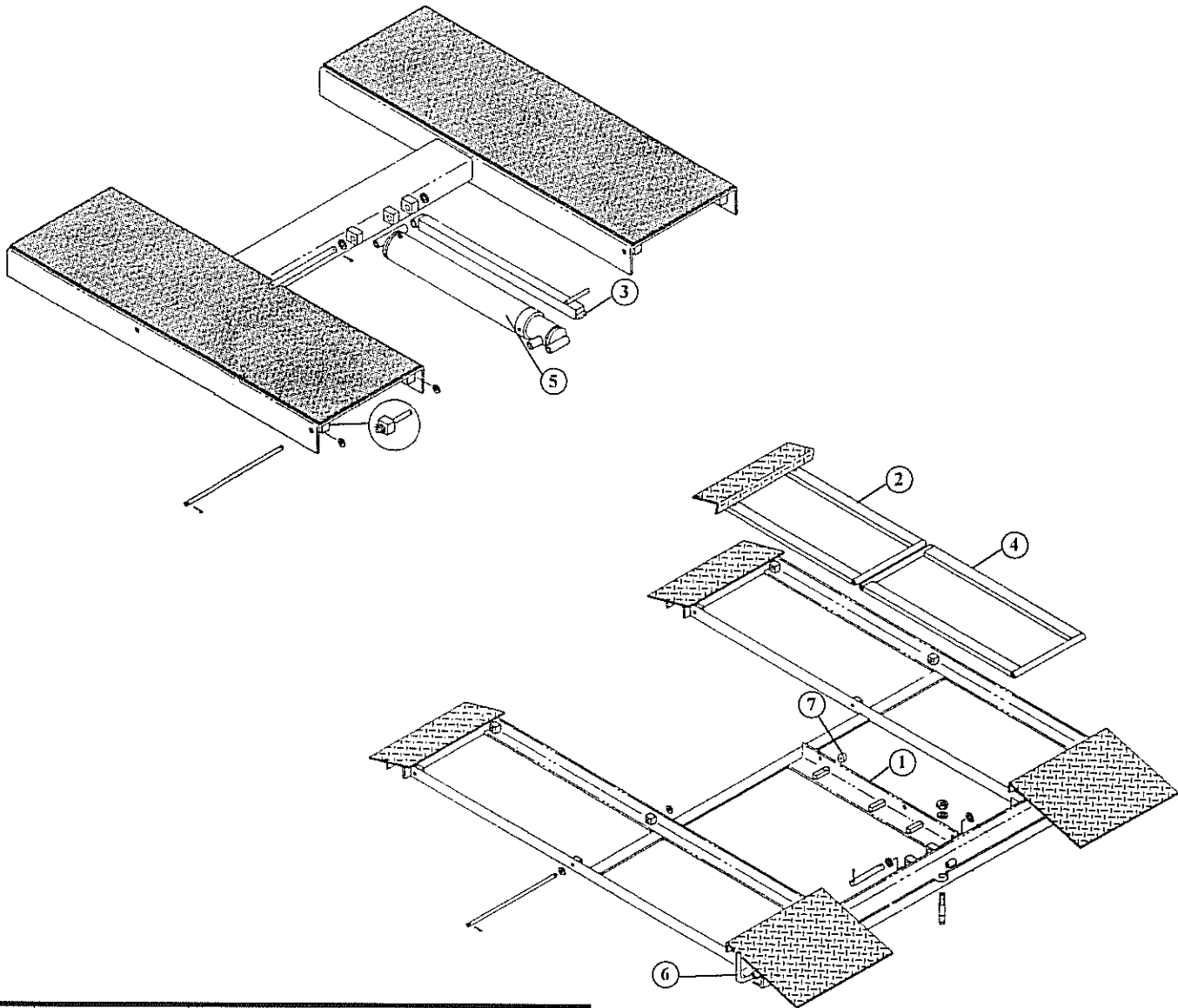
Item No.	S V I Part No.	Ref. OEM Part No.	Qty Req	Description
15	BH-7350-49	B-115-30	2	Equalizer Cable (GBT-70)
15	BH-7350-50	B-120-03	2	Equalizer Cable (CBT-90)
16	BH-7351-19	A-494-20	1	Chain Pin
17	F-HN-0875-9	A-492-17	1	Hex Nut
18	F-JN-0875-9	A-491-104	1	Jam Nut
19	BH-7350-06	A-491-20	1	Safety Dog Lever
20	F-FW-0625-SAE	B-102-35	2	Flat Washer
21	F-NL-0625-11	A-491-103	2	Nylon Nut
22	BH-7350-11	A-491-32	1	Extension Spring
23	BH-7350-10	A-491-31	1	Compression Spring
24	F-FW-0375-USS	B-103-12	3	Flat Washer
25	F-CP-125-1000	A-493-14	11	Cotter Pin
26	BH-7350-18	A-491-106	1	Rubber Bumper Angle
27	BH-7350-82	D-1128-05	1	Carriage Complete GFF-70
28	BH-7350-09	A-491-29	1	Safety Dog Link
29	BH-7350-23	A-491-266	1	Safety Dog (CFF/CBT-70)
29	BH-7350-24	A-494-09	1	Safety Dog (GFF/GBT-90)
29	BH-7350-26	A-494-54	1	Safety Dog (CFF/CBT-90)
30	BH-7350-34	B-100-17	4	Main Roller
31	BH-7351-20	A-491-36	8	Thrust Washer
32	BH-7351-21	A-491-37	4	Retaining Ring
33	BH-7350-08	A-491-22	4	Side Roller
34	BH-7350-07	A-491-21	4	Side Roller Pin
35	BH-7350-36	B-100-20	1	Counter Weight
36	BH-7351-22	A-491-93	4	Shim
37	BH-7350-83	D-1128-06	1	Carriage Complete (GFF-70)
38	BH-7350-87	D-1128-18	1	Center Bridge (CFF-70)
39	BH-7350-86	D-1128-12	1	Bridge Support Slave Side
39	BH-7350-92	D-1144-12	1	Bridge Support (CFF-90)
40	BH-7350-85	D-1128-11	1	Bridge Support Drive Side
41	BH-7350-15	A-491-64	1	Limit Switch Cushion
42	BH-7350-48	B-109-18	1	Chain Roller (CFF-70/90)
42	BH-7350-37	B-100-27	1	Chain Roller (GFF-70/90)
42	BH-7350-25	A-494-22	1	Chain Roller Shaft
43	BH-7350-74	C-681-46	1	Hydraulic Cylinder (CFF-70/90)
43	BH-7350-02	K34159	1	Cylinder Seal Kit
44	BH-7350-38	B-100-29	1	Base Angle (Drive Side)
45	BH-7350-39	B-100-30	1	Base Angle (Slave Side)
46	BH-7350-40	B-100-41	2	Cable Sheave
47	BH-7350-35	B-100-19	4	Side Roller Bracket

To Order Call: (800) 321-8173 or Fax: (800) 899-1784

All names, numbers, symbols and descriptions are used for reference purposes only. It is not implied that any part listed is the product of these manufacturers; however, some parts may be the actual product of these manufacturers.

For Gilbarco/Manitowoc Lifts

Low Rise Pad Lift CTL-60



Item No.	S V I Part No.	Ref. OEM Part No.	Qty Req	Description
1	BH-7350-51	B-142-16	1	Release Strip
2	BH-7350-52	B-152-19	2	Leg Ramp Ass'y.
3	BH-7350-53	B-152-22	1	Lock Leg
4	BH-7350-54	B-152-25	2	Leg Weldment
5	BH-7350-56	C-675-01	1	Hydraulic Cylinder
6	BH-7350-27	A-522-41	1	Safety Release Lever
7	BH-7350-28	A-522-46	2	Bearing

To Order Call: (800) 321-8173 or Fax: (800) 899-1784



GILBARCO/MANITOWOC

In-Ground Hoist Packing

Hoist Packing, Packing Installation Tools

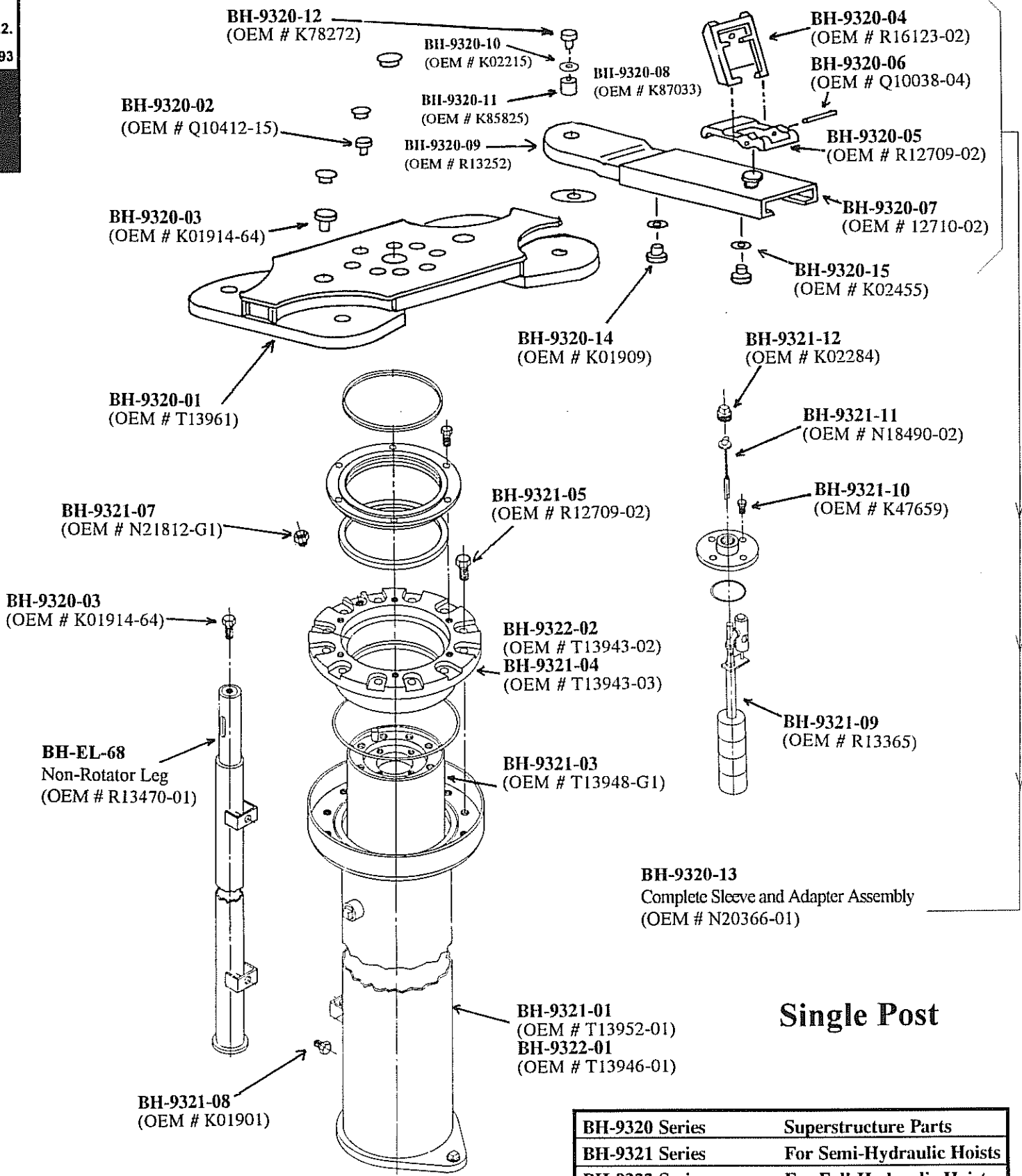
S V I Part Number	Reference Mfg. Kit # if any	Manufacturer's Model Numbers	Plunger Diameter	Contents and Description S V I Kits and Parts
BH-1717	K34122	A12C, D, E & M, A120 & A121, Front Pistons A-1CJ, A-5CM, A-6CM (Rubber Packing)	7-1/2"	1 - 7-1/2" x 8-1/4" Synthetic Rubber U Cup 1 - Rubber Wiper 1 - O'ring
BH-1707	K34115	A-12C30, D30, E30, A-12M30, M50, A-12030, A-12130, A-1CJ30, A-5CM30, A-6CM50 and all model numbers ending '0' to '9'. T08971, T09205, T11934, 936, 937, 896, 984 or with dash# (T08971-01)	7-1/2"	1 - 7-1/2" x 8-1/4" Polyurethane U Cup 1 - Polyurethane Wiper 1 - O'ring
BH-1717-20	R34138	Packing Installation Tool	7-1/2"	1 - Tool for 7-1/2" cylinders
BH-1715	K34152	A-12D3A, E3A, M3A, N3A, J3A, A-5CM3A, A-6CM5A and all models ending with "A" through "Z". Also: T13916, T13921, T13922 or with dash#s	8-1/2"	1 - 8-1/2" x 9-1/2" x 5/8" Synthetic U Cup 1 - Rubber Wiper Ring 1 - Felt Wiper 1 - O'ring
BH-1715-20	K34153	Packing Installation Tool	8-1/2"	1 - Tool for 8-1/2" Cylinders
BH-1718	K34114	18-30, 18-41C, 19-30, 20-30, 30-30, 40-30 FCF2, 4 & 6, FSC3, 5 & 6, 12 & 13	10-5/8"	1 - 10-5/8" x 11-3/4" x 5/8" Deep Synthetic U 1 - Wiper Ring
BH-1722	K87582	AHA-1AA, AHA-AAB, AHA-1AP, AHA-2BM, FCF2, 4 & 6, FCS 3, 5, 12 & 13, 14 & 15, 18 & 19, 20, 30 & 31, 40 & 41, 78 & 79	10-5/8"	1 - 10-5/8" x 11-1/2" x 1/2" Deep Synthetic U 1 - Synthetic Wiper Ring
BH-1716	K34151	A-1AA1A, 3A, A-1AB3A, A-1AN3A, A-2BM3A, A-3BM5A, A-5CM3A, A-6CM5A, T13944, 45, 46, T13952, T13959 and models ending with letters "A" to "Z"	10-5/8"	1 - 10-5/8" x 11-3/4" x 3/4" Deep Synthetic U 1 - Synthetic Rubber Wiper 1 - Felt Wiper 1 - O'ring
BH-1727 BH-1727S	K34113	All 10-5/8" with model numbers ending '0' to '9' except "T" models listed above. BH-1727S is an all Synthetic Version	10-5/8"	1 - 10-5/8" x 11-3/4" x 3/4" Deep Polyurethane U 1 - Synthetic Rubber Wiper
BH-1785		PCF2, 4 & 6, FCS3, 5, 7, 12 & 13, 14, 15, 18, 19, 20, 30 & 31, 40 & 41, 78 & 79	10-5/8"	3 - Synthetic MM Style Rings, 3/4" Deep 1 - Synthetic Rubber Wiper
BH-1716-20	K34118	Packing Installation Tool	10-5/8"	1 - Tool for 10-5/8" Cylinders



GILBARCO/MANITOWOC

In-Ground Hoist Parts

1.2. 93

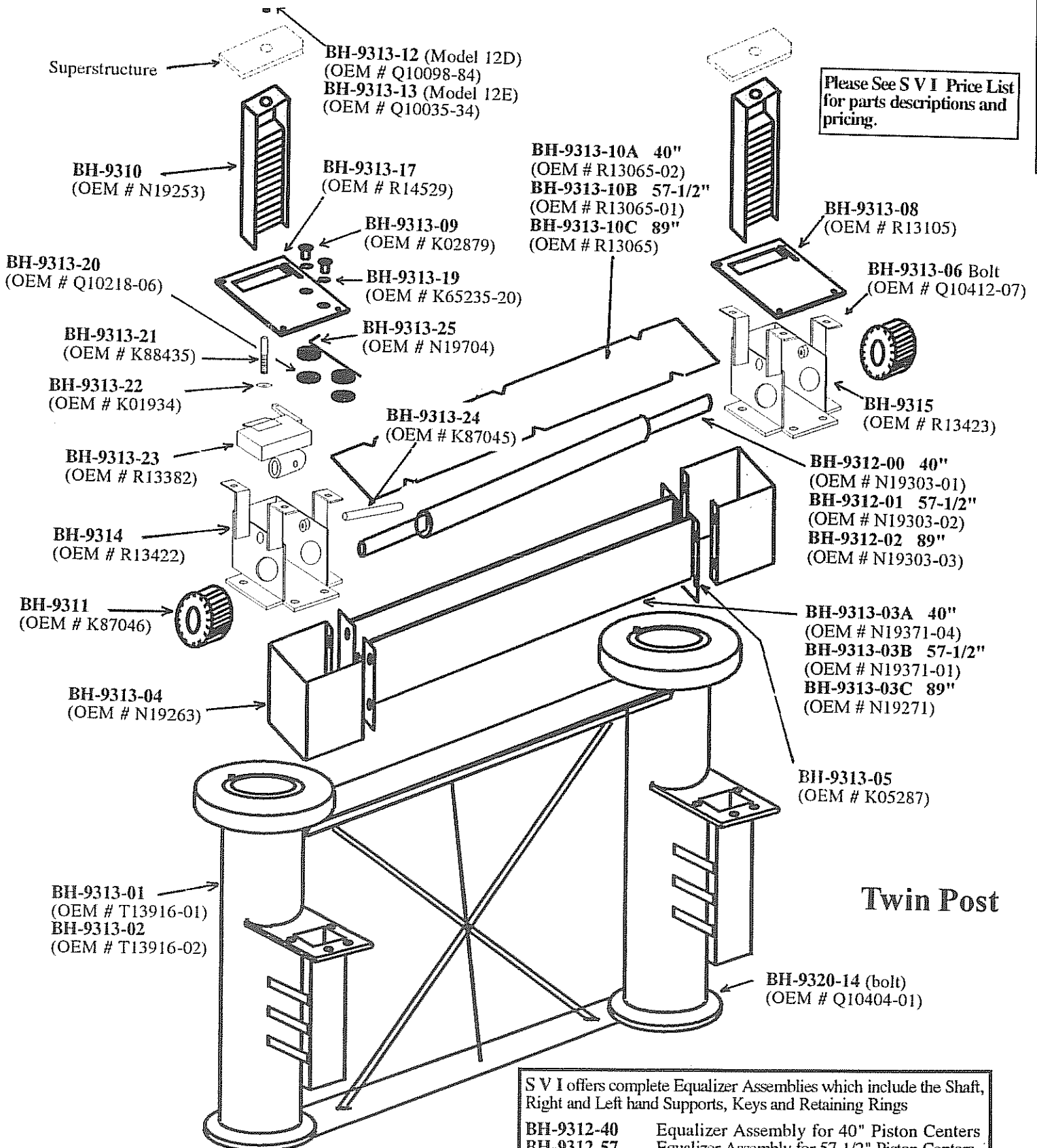


Single Post

BH-9320 Series	Superstructure Parts
BH-9321 Series	For Semi-Hydraulic Hoists
BH-9322 Series	For Full-Hydraulic Hoists



GILBARCO/MANITOWOC In-Ground Hoist Parts



Please See SVI Price List for parts descriptions and pricing.

Twin Post

SVI offers complete Equalizer Assemblies which include the Shaft, Right and Left hand Supports, Keys and Retaining Rings

BH-9312-40	Equalizer Assembly for 40" Piston Centers
BH-9312-57	Equalizer Assembly for 57-1/2" Piston Centers
BH-9312-89	Equalizer Assembly for 89" Piston Centers

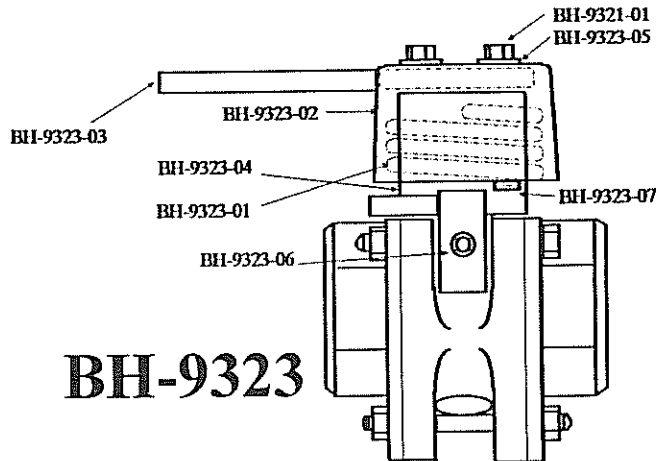


GILBARCO/MANITOWOC

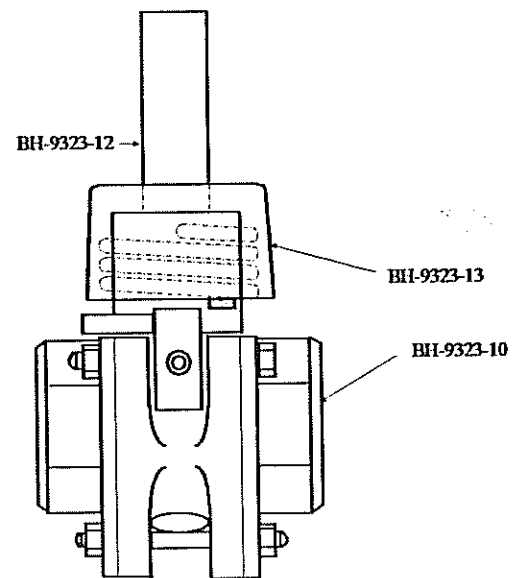
In-Ground Hoist Parts

Oil Control Valves

Floor Mount and Wall Mount



BH-9323



BH-9323-11

SVI Part Number	Reference Mfg. Part #	Description
BH-9323	R13325	Complete Valve Assembly
BH-9323-01	N19628	Valve Spring
BH-9323-02	N19630-01	Valve Handle Cover
BH-9323-03	R14641-02	Valve Handle
BH-9323-04	N19626	Valve Mandrel Assembly
BH-9323-05	K02206	Flat Washer, 3/8"
BH-9323-06	K82287-24	Self Locking Set Screw
BH-9323-07	Q10729-01	Shear Proof Pin
BH-9323-10	N19596	Oil Valve Body
BH-9323-11	R14467	Complete Valve Assembly
BH-9323-12	N19625	Oil Valve Shaft and Mandrel Assy.
BH-9323-13	N19630-02	Valve Handle Cover
BH-9323-14	N19702	Ball Valve Stem
BH-9323-15	N19633-02	Dynaquip Ball
BH-9323-20	N19633-03	Seal Kit

BH-9323-14 (Stem - Not Shown)
 BH-9323-15 (Ball - Not Shown)
 BH-9323-20 (Seal Kit - Not Shown)