



INSTALLATION INSTRUCTIONS AND PARTS LIST FOR
ABOVE THE FLOOR LIFT:
ATF-70B

7,000 LB. CAP.; 1,750 LBS. PER SWING ARM

F-42W41 (208V - 230V 1PH)

F-42W51 (200V - 230V 3PH)

PANZITTA SALES & SERVICE
72 George Avenue
Wilkes-Barre, PA 18705
570-822-6720 800-822-6720
www.panzittasales.com

CAUTION:

TO INSURE SAFE VEHICLE LIFTING AND TO PROVIDE MAXIMUM LONG TERM DURABILITY OF COMPONENTS, ALL VEHICLES MUST BE POSITIONED ON THE LIFT SO THAT VEHICLE WEIGHT IS EVENLY DISTRIBUTED ON ALL FOUR SWING ARMS. ALL FOUR SWING ARMS MUST BE USED IN LIFTING ANY LOAD.

INSTALLATION TO BE MADE IN ACCORDANCE WITH LOCAL, STATE AND FEDERAL REGULATIONS. THE AUTOMOTIVE LIFT INSTITUTE INC. WARNS AGAINST THE USE OF THIS LIFT TO LIFT PICKUP TRUCKS, VANS AND RECREATIONAL VEHICLES UNLESS SPECIAL ADAPTERS ARE USED. GILBARCO ENDORSES THIS RECOMMENDATION.

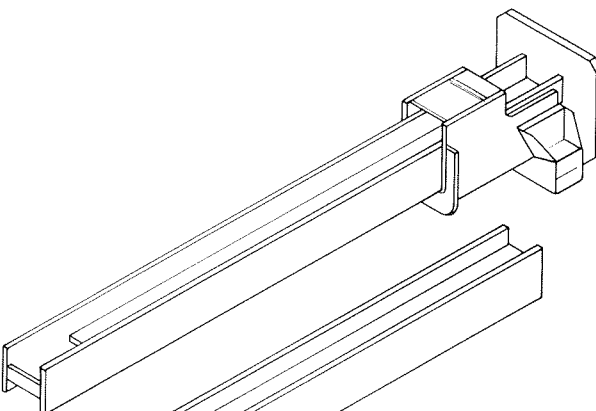
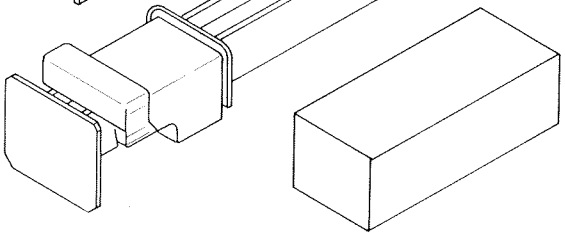
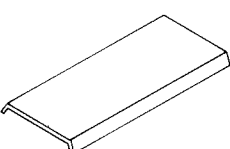
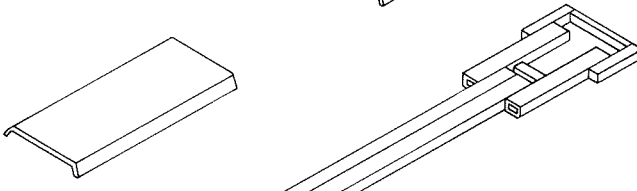
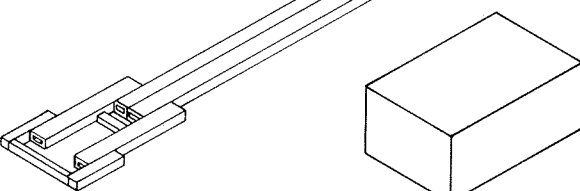
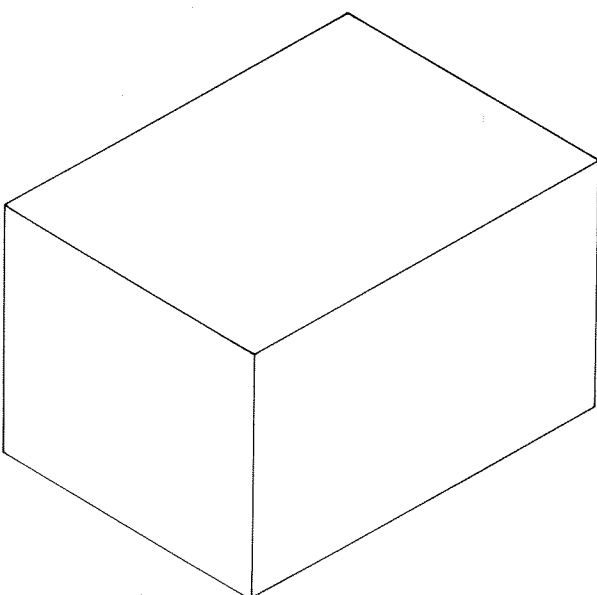
WARNING:

THESE INSTRUCTIONS MUST BE THOROUGHLY READ AND FOLLOWED BY INSTALLER DURING INSTALLATION, AND THEN BY THE USER THROUGHOUT THE LIFE OF THE LIFT. THESE INSTRUCTIONS MUST ALSO BE THOROUGHLY READ AND FOLLOWED BY ANYONE DOING SERVICE OR REPAIR WORK ON THE LIFT TO ASSURE PROPER ASSEMBLY OR DISASSEMBLY.

INDEX

MISCELLANEOUS	PAGE
Shipment Check List	2
General Information	3
LIFT ASSEMBLY PROCEDURE - Assemble this lift following the steps given below. Do the work in the sequence shown.	
Installation of Lift	4
Erect Columns	6
Anchor Base to Floor	6
Attach Wire Ropes	6
Installation of Swing Arms	6
Installation of Power Unit	6
Hydraulic Piping	6
Fill Hydraulic System	6
Hydraulic Circuit Schematic	7
Installation of Operating Handle	7
Installation of Automatic Lock	7
Clamp Hydraulic Tube	7
Electrical Wiring	8
Adjustment of Chain Tension	9
Adjustment of Wire Rope Tension	9
Adjustment of Automatic Lock	9
Installation of Swing Arm Lock	9
Installation of Covers and Buffers	10
INSTRUCTIONS	
Operating, Inspection and Maintenance	11
How to Order Replacement Parts	11
PARTS LIST	12 thru 22

SHIPMENT CHECK LIST

	QUANTITY	DESCRIPTION
	1	DRIVE AND SLAVE COLUMN ASSY. (INCL. CARRIAGE, HYDRAULIC CYLINDER) AUX. BASE FRAME.
	1	SWING ARMS SWING ARMLOCKS WIRE ROPE LOOSE PARTS
	2	BASE COVERS
	1	BASE FRAME
	1	POWER UNIT
	1	UPPER & LOWER SIDE COVERS SIDE COVER HARDWARE

NOTICE:
CONTENTS OF EACH BUNDLE IS
ATTACHED TO OUTSIDE OF EACH
BUNDLE

1. GENERAL INFORMATION. Gilbarco lifts are designed to give many years of trouble free operation if installed correctly and given proper care. Note: Dimensions indicated in sketches are recommended minimums only. The company will not assume any responsibility or liability, financial, legal or otherwise, in connection with the installation of its lifts which is not done in strict compliance with this Instruction Bulletin or which goes beyond the stated limitations of the standard instructions sheets, or drawings currently applying at the date of shipment to individual models of Gilbarco lifts.

In the event Gilbarco representatives consult with contractors, owners, or their employees regarding location of lift, or any other matters, such as layout, head room, or floor planning, this consultation shall not be taken as a representation of accuracy; and the company will not assume any liability or responsibility in any manner whatsoever. It is suggested that an architect be consulted.

WARNING

The instructions in this bulletin must be strictly followed to assure safe and trouble free operation of Gilbarco's Lift.

2. SPECIFICATIONS

Lift	ATF-70
Capacity	7000 lbs.
Lifting height	71 in.
Drive type	Hydraulic power unit, Leaf chain drive side, Wire ropes to slave side.
Up time	45 sec.
Electric motor	2 H.P., 208/230V. 1ph. 230V. 3ph. 200V. 3 ph.
Hydraulic pressure	2500
Hydraulic oil	SAE 20
Oil fill cap.	3 gal.

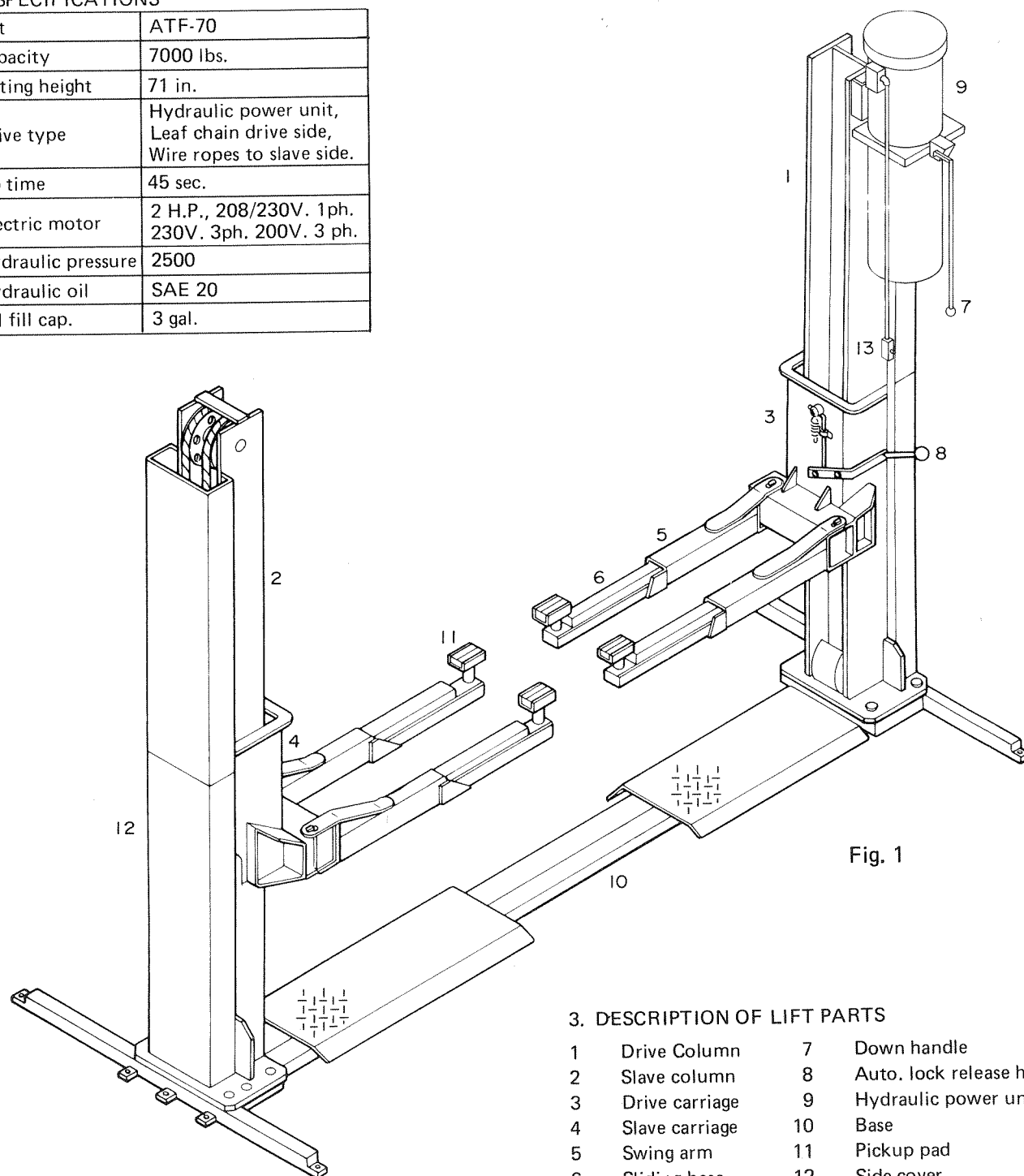


Fig. 1

3. DESCRIPTION OF LIFT PARTS

1	Drive Column	7	Down handle
2	Slave column	8	Auto. lock release handle
3	Drive carriage	9	Hydraulic power unit
4	Slave carriage	10	Base
5	Swing arm	11	Pickup pad
6	Sliding base	12	Side cover
		13	Up switch

T13985

4. **INSTALLATION OF LIFT.** Position base but do not anchor to floor at this time. (See Figs. 2 and 3) Proper location of a lift is essential to insure efficient usage and operation. Therefore, a careful study should be made of the area available for installation.

CONSIDER: DIRECTION OF TRAFFIC flow.

APPROACH SPACE to allow adequate maneuverability of the car.

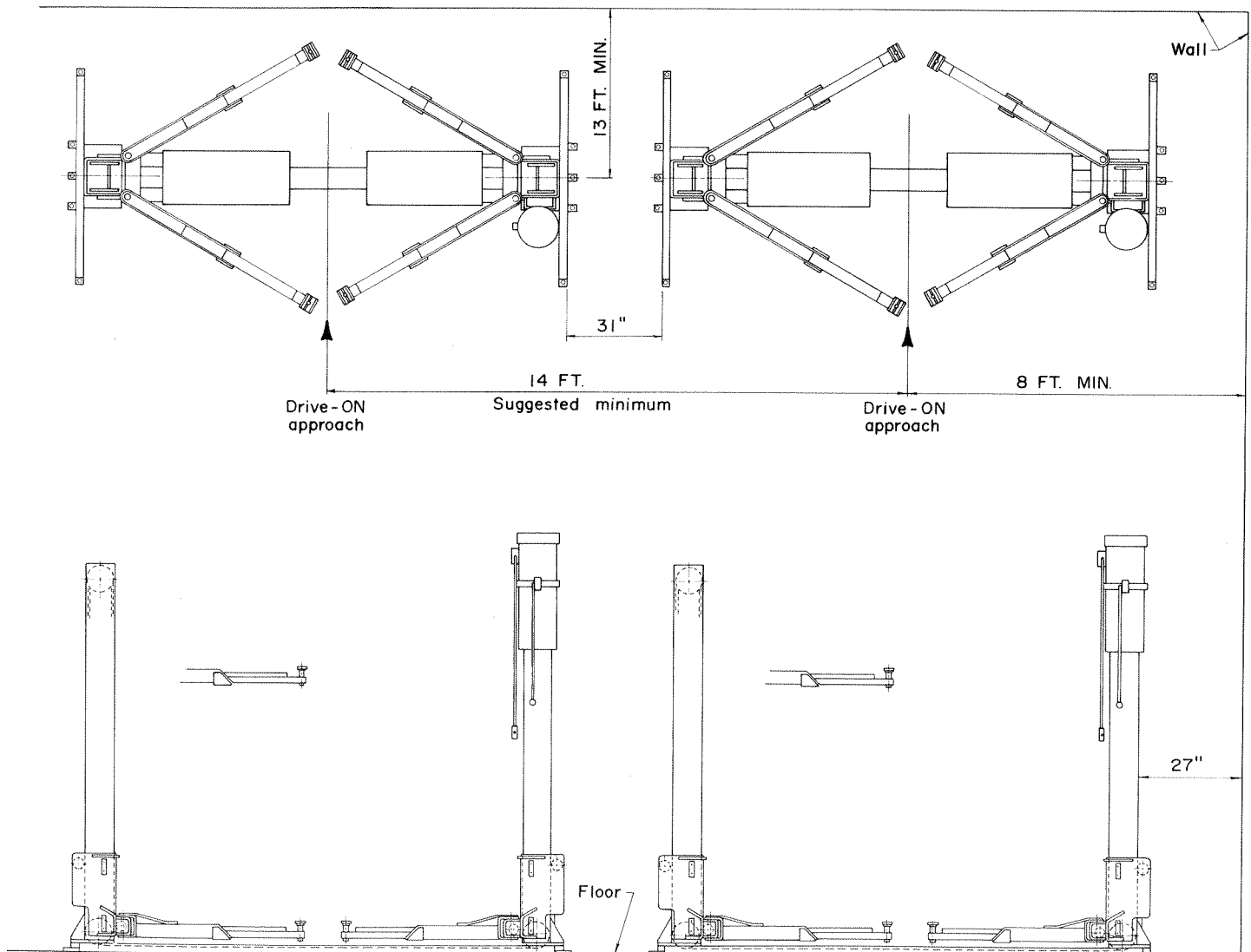
WORKING AREA required around the car.

FLOOR lift should be located on a level floor.

HEADROOM - 11'6" is required for passenger cars.

Figures 2 and 3 show physical dimensions of the lift and other dimensional information required to locate the lift.

PANZITTA SALES & SERVICE
72 George Avenue
Wilkes-Barre, PA 18705
570-822-6720 800-822-6720
www.panzittasales.com



PANZITTA SALES & SERVICE
72 George Avenue
Wilkes-Barre, PA 18705
570-822-6720 800-822-6720
www.panzittasales.com

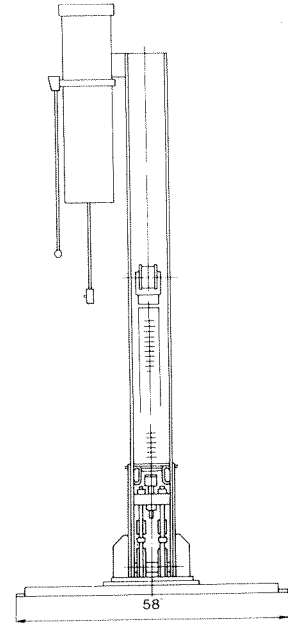
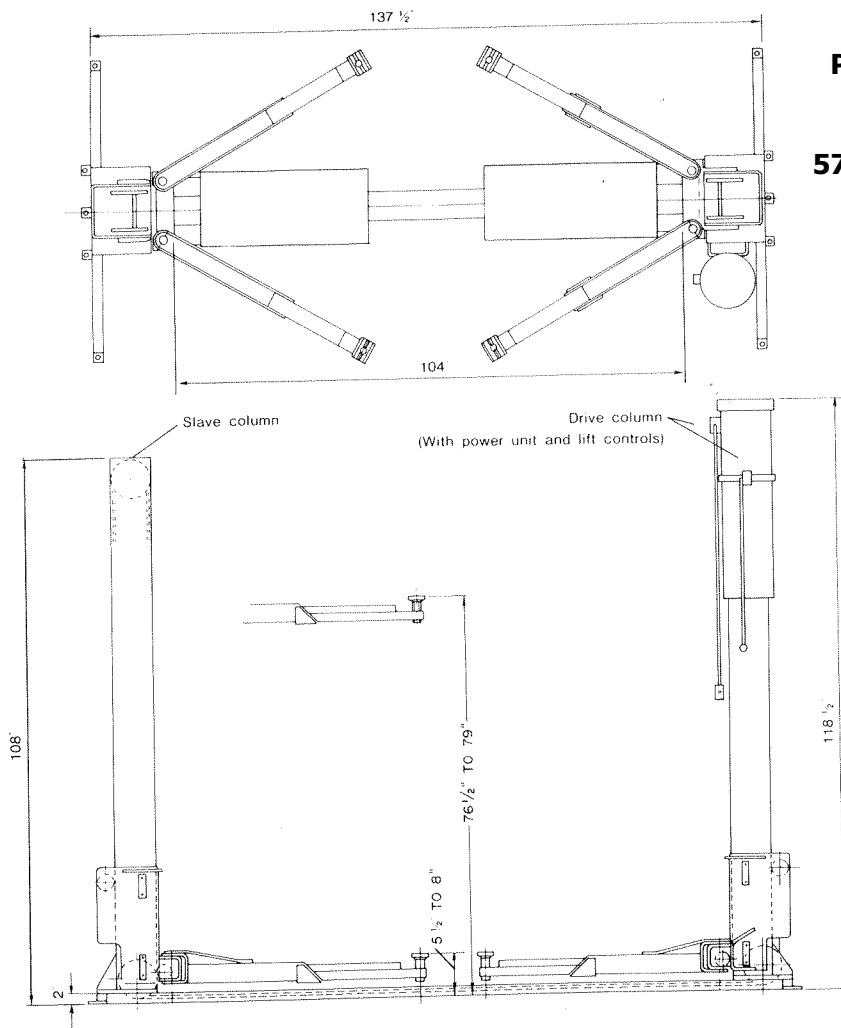


Fig. 3

T13987

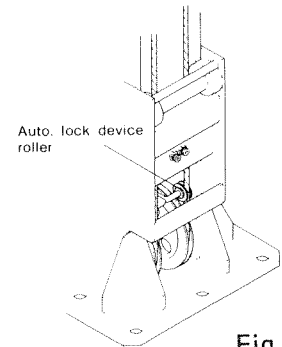
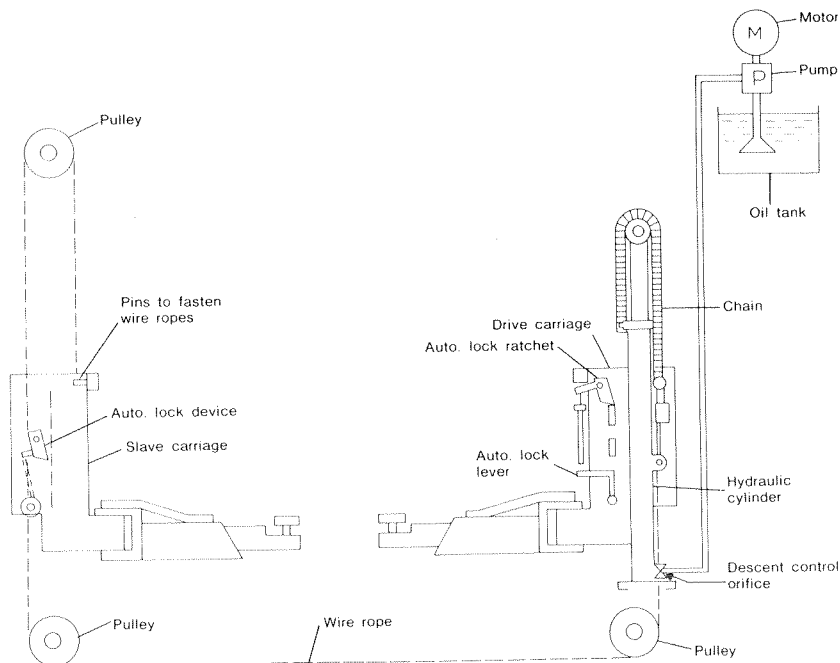


Fig. 5

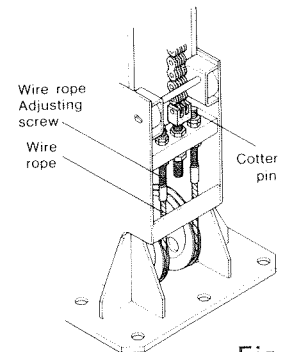


Fig. 6

Fig. 4

T13988

5. **ERECT COLUMNS.** Columns may be installed on either side of base.

CAUTION; Be careful not to damage the two wire rope pulleys located at the bottom of the column. Secure the columns to the base using 14 M20 x 2" long bolts.

6. **ANCHOR BASE TO CONCRETE FLOOR.** Level the base by placing shims under it and bolt it to the floor using the anchor bolts supplies. Use the base as a template and drill 12 holes 3/4" diameter, 4" deep. Fill any gap between bottom of base and floor with mortar.

7. **PLUMB COLUMNS.** Plumb columns in both directions by placing shims between the columns and base. The columns should be plumbed so that they lean outward or away from each other 1/2 to 1 inch so that they will become perpendicular when a load is raised.

8. **ATTACH WIRE ROPES.**

A. Position the slave carriage so that it is approx. 4" higher than the drive carriage.

B. Place the loop from the end of each wire rope around the pins that are located in the inside front of the slave carriage. Secure the cable with a bolt and washer. See Fig. 4.

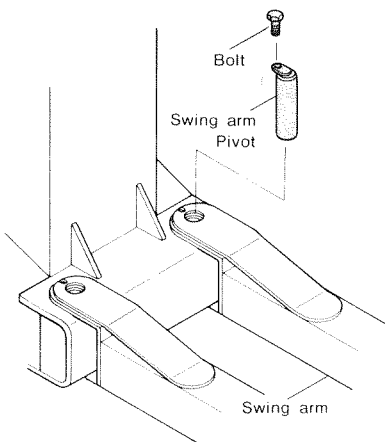
C. Route the other end of the cable up through the slave carriage, over the top pulleys, down by the auto lock device roller as shown in Fig. 4 and 5. Continue down and around the lower pulleys, through the tubing in the base then around the other lower pulleys and up to the drive carriage. See Fig. 4.

D. Connect the threaded stud end of the wire ropes to the drive carriage through the holes provided. Fasten the studs to the carriage using (1) nut on the bottom and (2) nuts and a cotter pin on top of the bar that the threaded studs are fastened to. See Fig. 6 and 17.

CAUTION: Be careful not to cross the wire ropes when routing them through this lift.

9. **INSTALL SWING ARMS**

Raise the carriage slightly and block it up. Align the holes in the end of the swing arm with the mating hole in the carriage. Insert the pivot pin through the holes and secure it with a bolt. See Fig. 7.

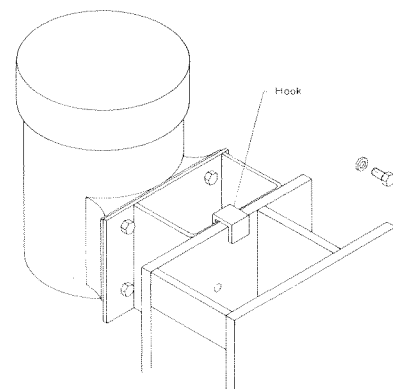


N21817

Fig. 7

10. **INSTALL POWER UNIT**

Lift the power unit to the top of the drive column. A hook is provided to hold it in place until it is secured with two bolts. See Fig. 8. The relief valve is factory adjusted and locked at the proper pressure and should need no further adjustment.



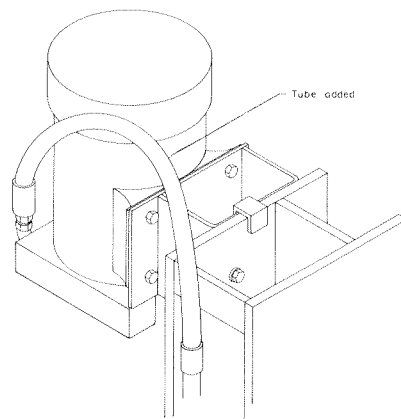
N21818

Fig. 8

11. **HYDRAULIC LINE**

Complete the piping by connecting the power unit to the tube coming up the inside of the column with the short hose provided. See Fig. 9.

CAUTION: Take care not to introduce dirt or foreign matter into the tubing.

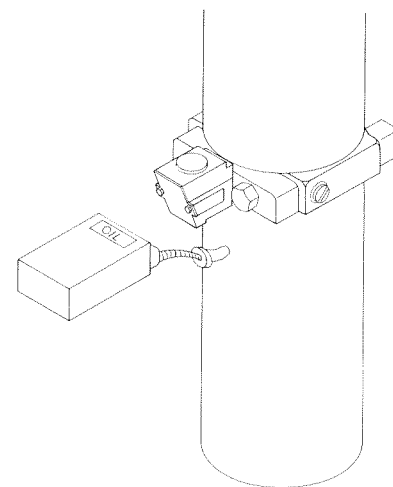


R18240

Fig. 9

12. **FILL RESERVOIR**

Use good quality SAE 20 grade hydraulic oil. Approx. three gallons are required to fill the reservoir. Be sure the oil is clean. See Fig. 10.



R18241

Fig. 10

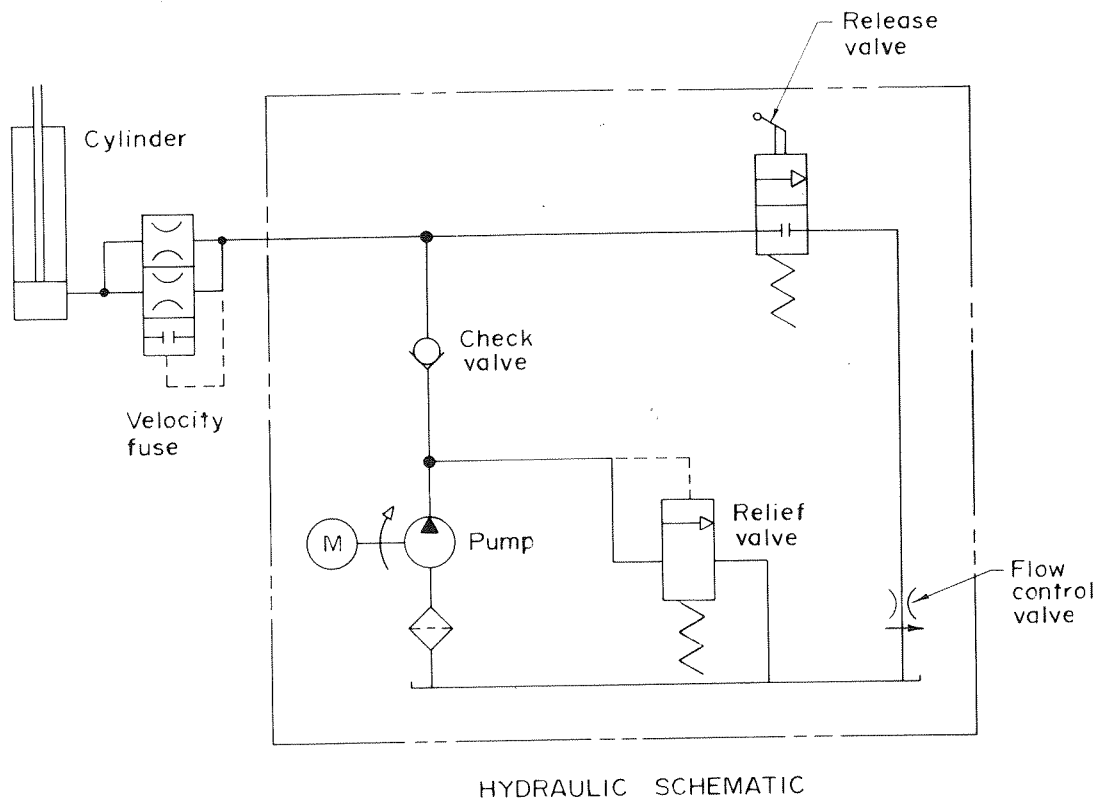


Fig. 11

N21819

14. DOWN CONTROL HANDLE

Connect the operating handle as shown in Fig. 12.

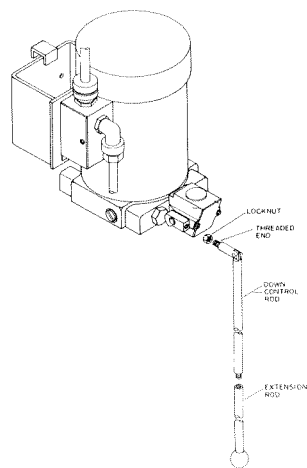


Fig. 12

R18243

15. AUTO. LOCK RELEASE

Connect the auto. lock release handle as shown in Fig. 13.

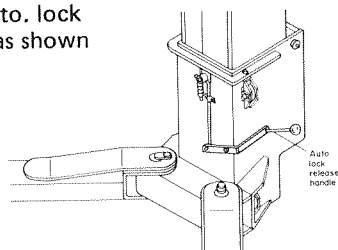


Fig. 13

R18233

16. CLAMP HYDRAULIC TUBE

Remove the "U" shaped shipping strap which is holding the top of the hydraulic cylinder and discard it. It is only used for shipping purposes. Reattach the tube clamp in the same threaded hole using the same hardware.

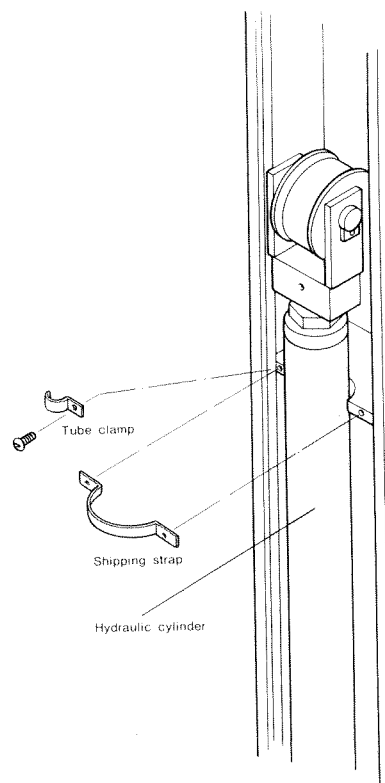


Fig. 14

R18234

17. ELECTRICAL WIRING (Fig. 15)

Before starting any wiring, check applicable local, state and federal wiring codes. Customer to supply all electrical needs, up to the junction box on the power unit motor. Be sure the circuit is properly grounded and the entire electrical installation must meet the requirements of the National Electrical Code, as well as other state and local requirements. In outdoor installations, or where direct water spray is possible, consult factory for alternate electrical components. Power unit can be supplied with the following 2 hp motors: 208V - 230V, single phase, 60 cycle 200V - 230V, 3-phase, 60 cycle.

MAKE SURE THAT THE ELECTRICAL CHARACTERISTICS OF THE MOTOR ON THE LIFT AND THE ELECTRICAL SERVICE POWERING THE MOTOR ARE THE SAME.

Connect incoming single phase electrical service as shown in single phase wiring diagram.

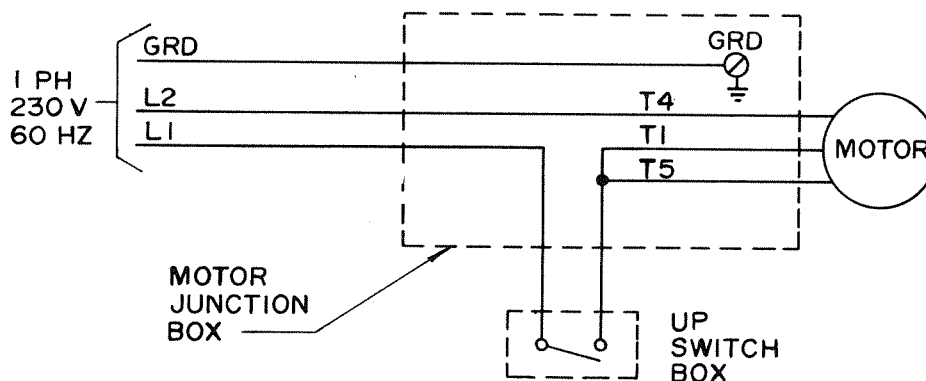
Connect incoming 3 phase electrical service as shown in 3 phase wiring diagram. Motor must rotate cw when viewed from top.

CAUTION: Before turning motor On to check direction of motor rotation, be sure oil reservoir is full. Check motor rotation on 3-phase electrical service.

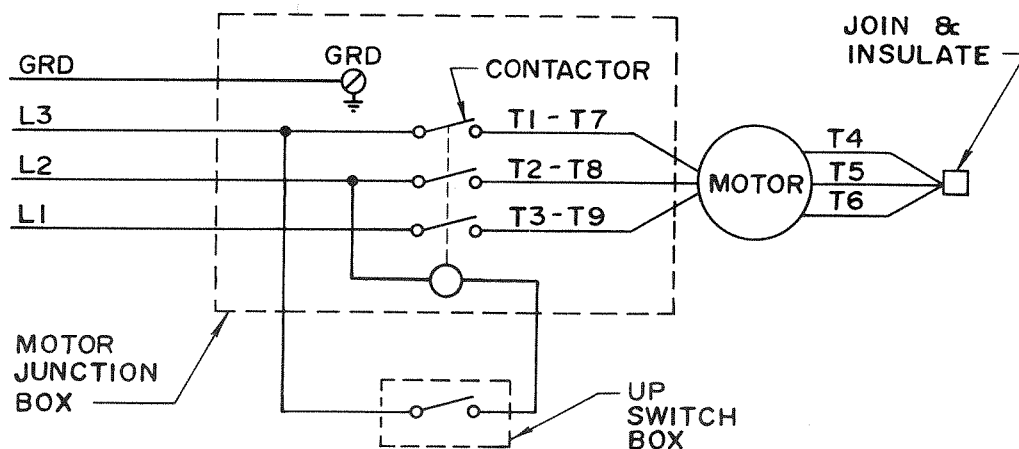
If flow does not start immediately, it is probably due to wrong motor direction. Flow will be indicated by movement of the hydraulic piston. To reverse direction of motor rotation, reverse any two line leads.

PANZITTA SALES & SERVICE
72 George Avenue
Wilkes-Barre, PA 18705
570-822-6720 800-822-6720
www.panzittasales.com

SINGLE PHASE WIRING 2 HP, 208V - 230V, 60 HZ

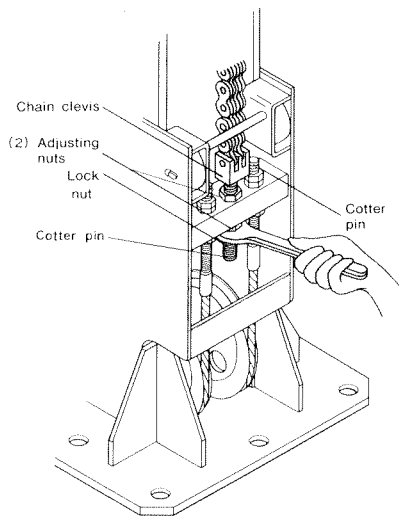


3 PHASE WIRING 2 HP, 200V - 230V, 60 HZ



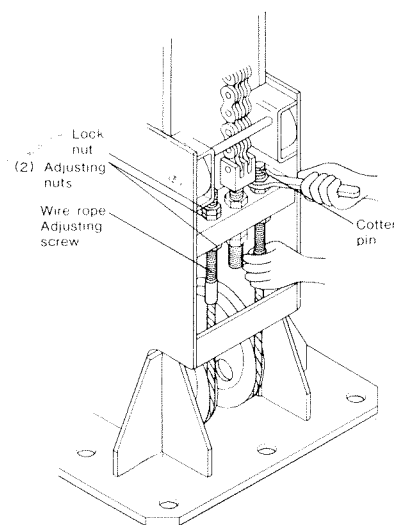
N21820

Fig. 15



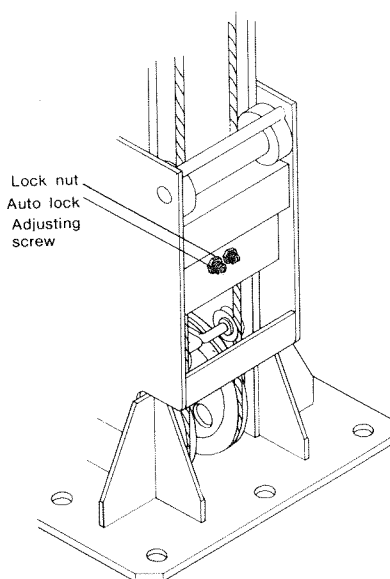
N21816

Fig. 16



R18235

Fig. 17



R18236

Fig. 18

18. ADJUST CHAIN TENSION

- Pull down on the lift control handle until the hydraulic cylinder is completely retracted.
- Loosen the lock nut on the chain clevis.
- Turn the adjusting nuts on the clevis to move the carriage so that it is completely lowered and the chain just starts to slacken.
- Tighten the lock nut against the adjusting nut to prevent further movement and insert the cotter pin below the locknut. See Fig. 16.

19. ADJUST WIRE ROPE TENSION

- Loosen the lock nuts on both wire rope adjusting screws.
- Move the adjusting nuts up or down on the wire rope adjusting screws until the slave carriage is 1/2 inch higher than the drive carriage. This is to be done with no load in the carriages. Both wire ropes should have the same tension on them.
- Tighten the lock nuts against the adjusting nuts to prevent further movement. See Fig. 17. Insert cotter pin above each lock nut.

20. AUTO. LOCK DEVICES

Make sure that the auto. lock devices operate properly.

- The pawl from the auto. lock on the drive column should remain in contact with the front of the column and ride over the stop blocks when the lift is going up. However, if the carriage tries to come down, the auto. lock pawl will contact the top of the stop block and stop the carriage. The auto. lock must be manually disengaged for the carriage to be lowered.
- The pawl on the auto. lock located on the slave column should not contact the column or stop blocks when the lift is going up or down if the lift is operating properly. However, the auto. lock pawl must engage the stop blocks if one or both of the wire ropes becomes slack or breaks. Try this out by placing something under the slave column to create slack in the wire rope. The latch should then engage. If it does not engage, adjust as shown below. See Fig. 18.
 - Loosen the lock nut.
 - Turn the adjusting screw.
 - Tighten the lock nut against the adjusting screw to prevent further movement.

21. SWING ARM LOCK

Install the swing arm lock mechanism as shown in Fig. 19. To operate the swing arm lock, position the swing arms under the vehicle at the correct location and then turn the wing head screw clockwise until it is firmly seated against the lock rod. When the vehicle is lowered, loosen the wing head screw before moving the swing arms from under the vehicle.

PANZITTA SALES & SERVICE

72 George Avenue

Wilkes-Barre, PA 18705

570-822-6720 800-822-6720

www.panzittasales.com

22. INSTALL COVERS AND BUFFERS

Install column side covers, base covers and buffers as shown in Fig. 20, 21 and 22.

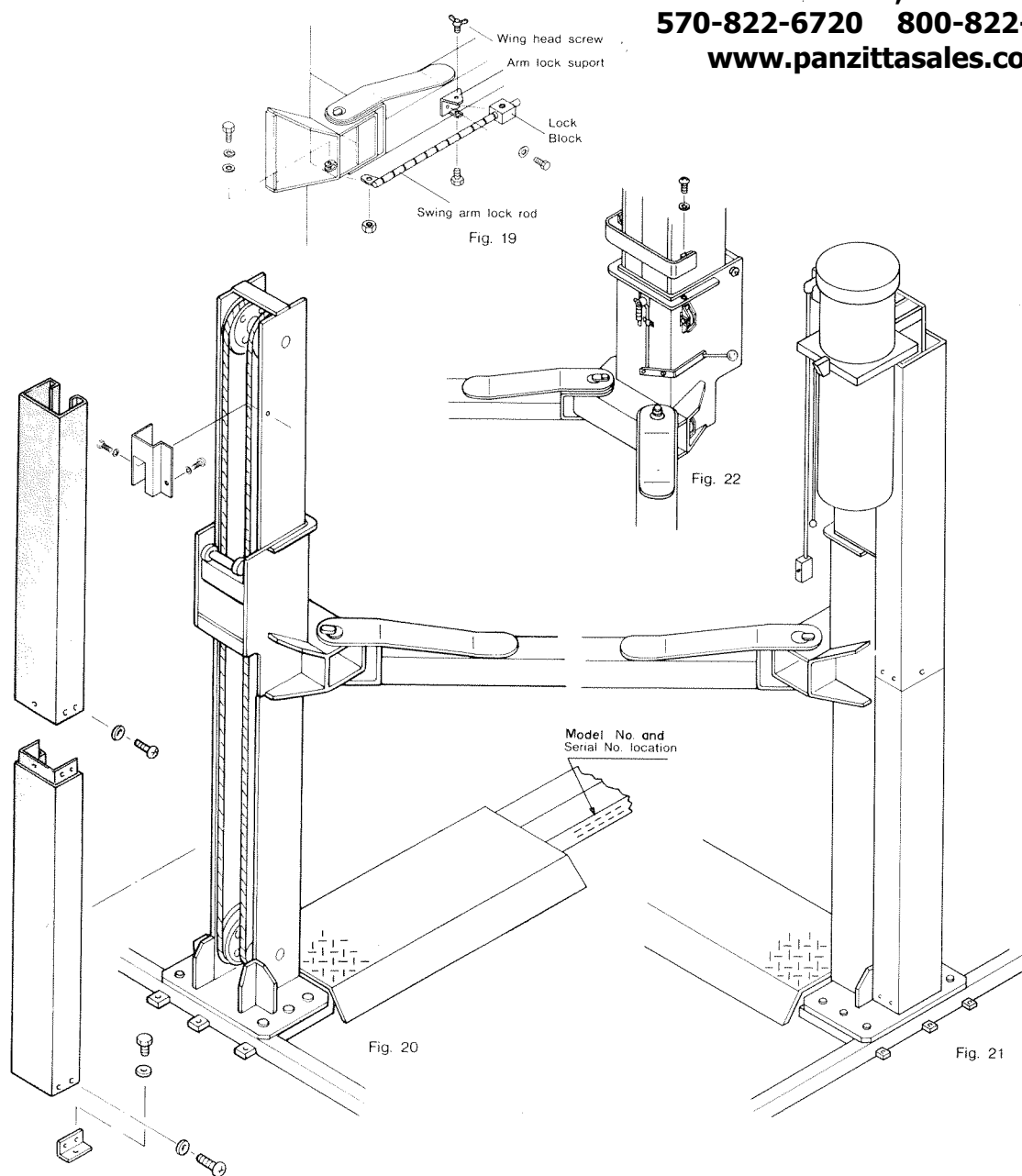
PANZITTA SALES & SERVICE

72 George Avenue

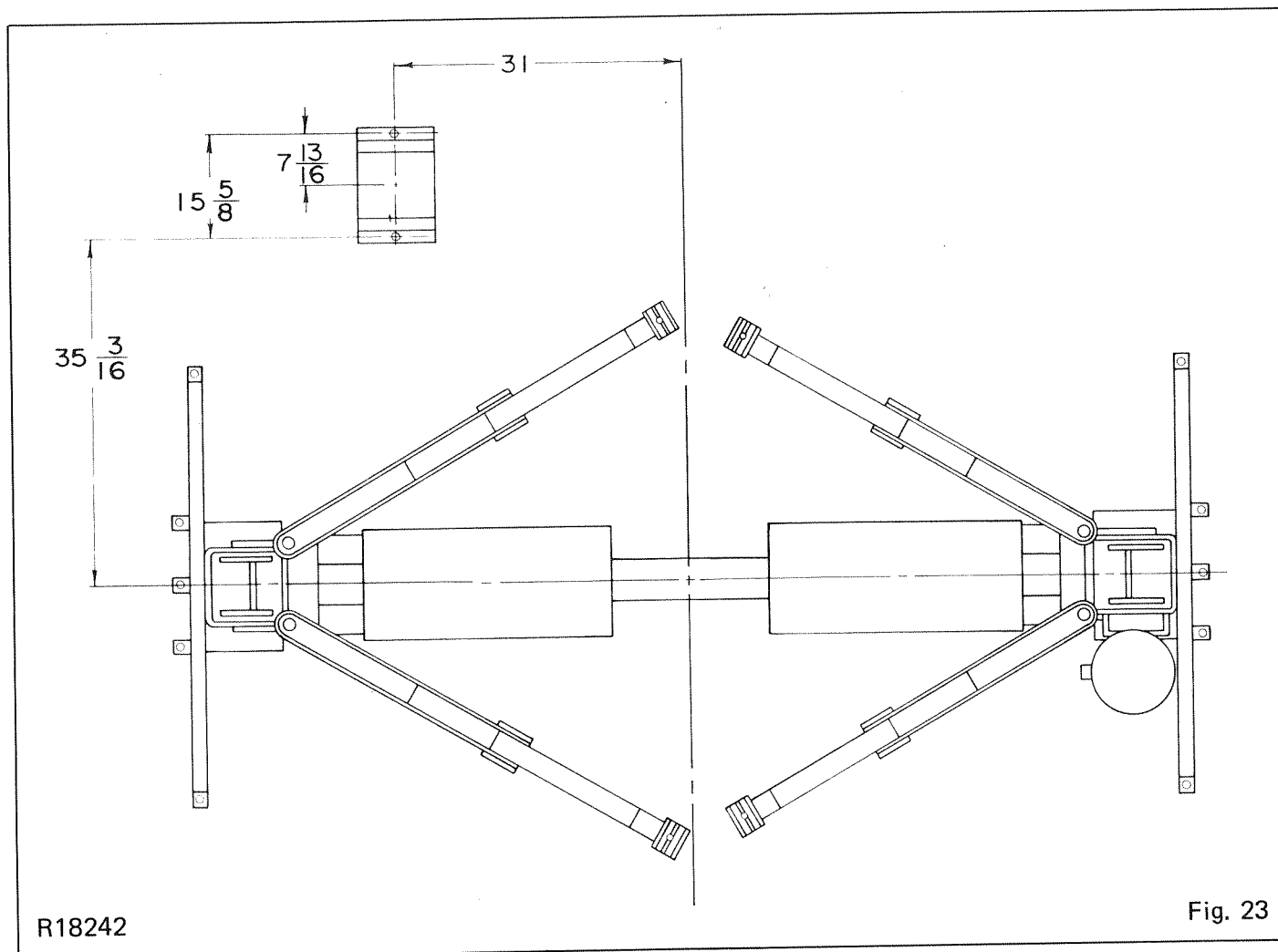
Wilkes-Barre, PA 18705

570-822-6720 800-822-6720

www.panzittasales.com



23. INSTALL WHEEL LOCATOR PLATE
See Fig. 23 to position wheel locator plate.



24. OPERATING, INSPECTION AND MAINTENANCE INSTRUCTIONS.

The permanent operating instructions along with inspection and maintenance instructions furnished with this lift should be permanently and conspicuously displayed in the lift control area. Automotive lifts should be operated by trained personnel only. If you do not know how to position or lift a vehicle properly, do not guess; get training. Start by reading the operating instructions, the booklet "Lifting It Right", and the "Automotive Lift Safety Tip" sheet, furnished with the lift. Also refer to the vehicle manufacturer's service manual for proper lift points and lifting procedures.

25. HOW TO ORDER REPLACEMENT PARTS.

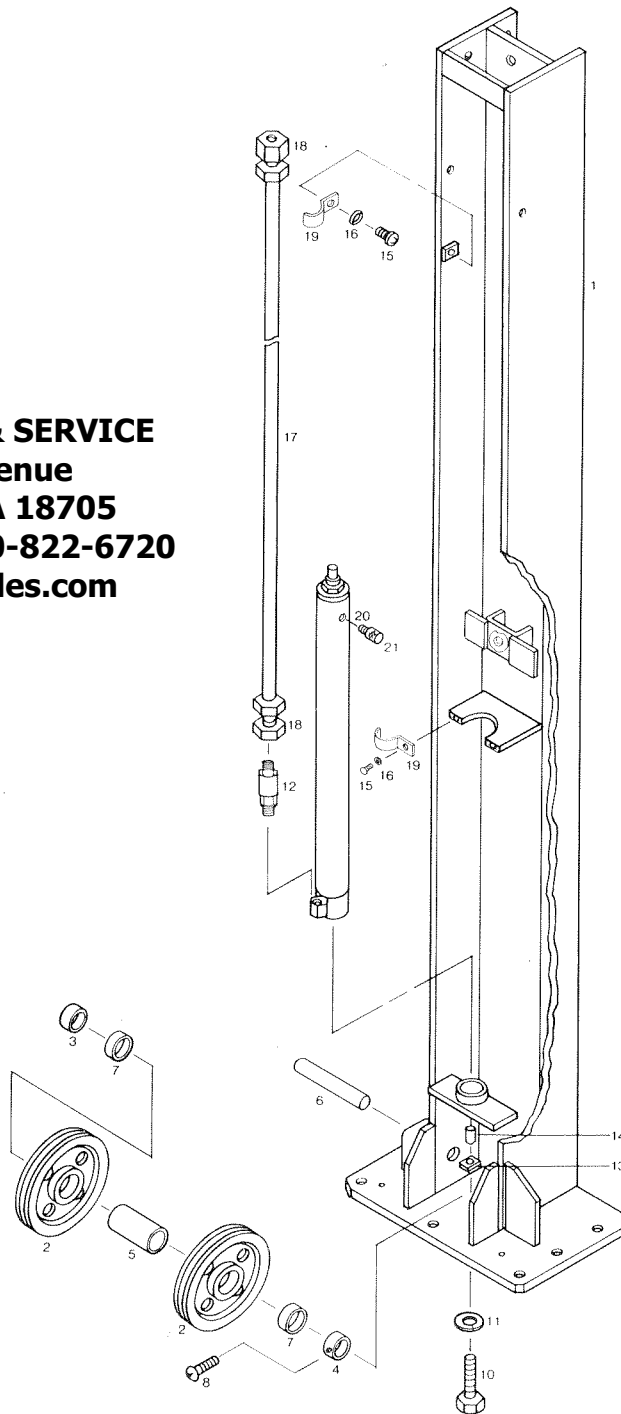
IMPORTANT: Be sure to mention the lift model number and serial number in all correspondence dealing with service information and when ordering replacement parts. Serial number and Model number is located on the side at the center of the base. See Fig. 20. Use only Gilbarco authorized replacement parts.

PANZITTA SALES & SERVICE
72 George Avenue
Wilkes-Barre, PA 18705
570-822-6720 800-822-6720
www.panzittasales.com

COLUMN, DRIVE

PARTS LIST - F-42W41 & F-42W51 LIFTS

PANZITTA SALES & SERVICE
72 George Avenue
Wilkes-Barre, PA 18705
570-822-6720 800-822-6720
www.panzittasales.com



T13990

Code No.	No. Req.	Symbol No.	Description
1	1	R18220-72	Column, Drive
2	2	R18220-01	Pulley
3	1	R18220-26	Spacer
4	1	R18220-28	Spacer
5	1	R18220-27	Spacer
6	1	R18220-24	Shaft
7	2	R18220-14	Bearing
8	1	R18220-169	Round Head Screw M6 x 3/8
9	*		
10	1	R18220-161	Hex. Head Bolt M10 x 2
11	1	R18220-188	Lock Washer M10

Code No.	No. Req.	Symbol No.	Description
12	1	R18220-84	Flow Control Valve
13	1	R18220-58	Washer
14	1	R18220-59	Collar
15	2	R18220-167	Round Head Screw M5 x 3/8
16	2	R18220-185	Lock Washer M5
17	1	R18220-86	Tube
18	2	R18220-85	Union
19	2	R18220-195	Clamp
20	1	R18220-83	Cylinder
21	1	R18220-83A	Vent Plug

USE ONLY GILBARCO AUTHORIZED REPLACEMENT PARTS

IMPORTANT: *Specify Model and Serial Number of Lift. Also Symbol Number and Name of Part.*

COLUMN, SLAVE

PARTS LIST - F-42W41 & F-42W51 LIFTS



PANZITTA SALES & SERVICE
72 George Avenue
Wilkes-Barre, PA 18705
570-822-6720 800-822-6720
www.panzittasales.com

T13991

Code No.	No. Req.	Symbol No.	Description
1	1	R18220-73	Column, Slave
2	4	R18220-01	Pulley
3	3	R18220-26	Spacer
4	1	R18220-28	Spacer
5	2	R18220-27	Spacer
6	1	R18220-24	Shaft
7	4	R18220-14	Bearing
8	1	R18220-25	Shaft

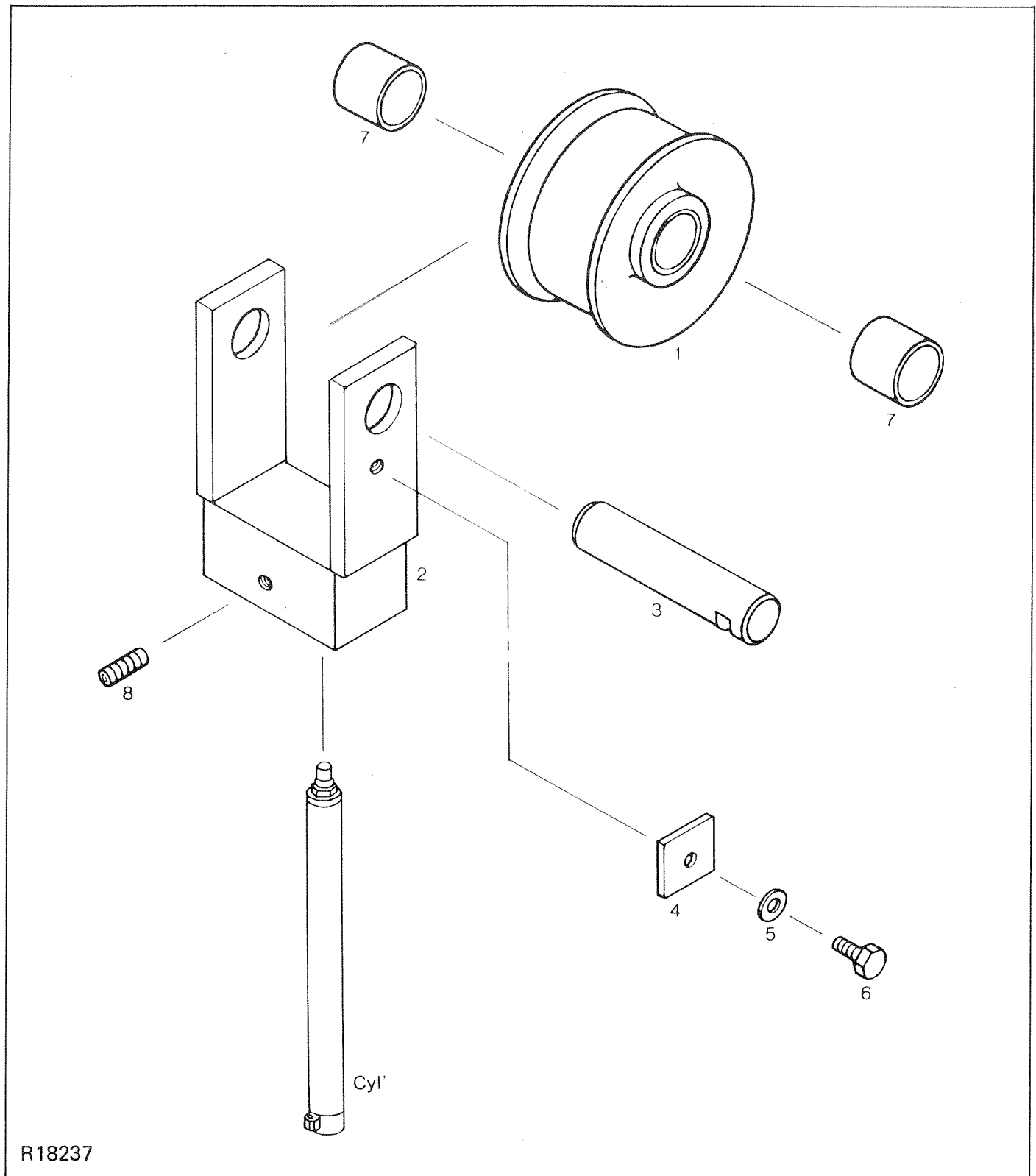
Code No.	No. Req.	Symbol No.	Description
9	1	R18220-169	Round Head Screw M6 x 3/8
10	1	R18220-60	Bracket
11	2	R18220-151	Hex. Head Bolt M6 x 5/8
12	2	R18220-186	Lock Washer M6
13	1	R18220-171	Hex. Socket Flat Head Screw M8 x 3/4
14	2	R18220-191	Flat Washer M6

USE ONLY GILBARCO AUTHORIZED REPLACEMENT PARTS

IMPORTANT: Specify Model and Serial Number of Lift. Also Symbol Number and Name of Part.

PULLEY

PARTS LIST - F-42W41 & F-42W51 LIFTS



Code No.	No. Req.	Symbol No.	Description
1	1	R18220-02	Pulley
2	1	R18220-33	Pulley Support
3	1	R18220-34	Shaft
4	1	R18220-61	Retainer, Shaft

Code No.	No. Req.	Symbol No.	Description
5	1	R18220-192	Flat Washer M8
6	1	R18220-153	Hex. Head Bolt M8 x 5/8
7	2	R18220-15	Bearing
8	1	R18220-175	Set Screw M8 x 5/8

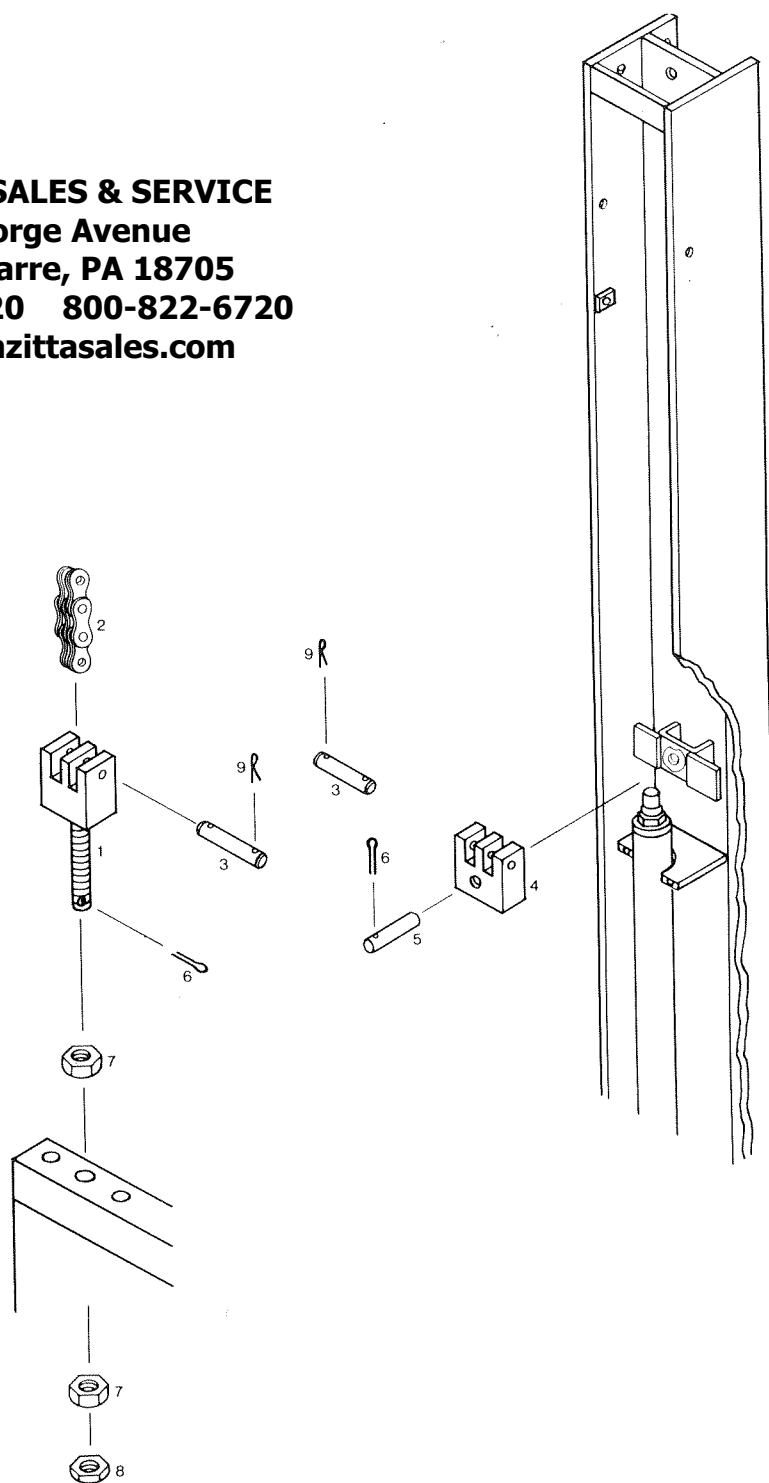
USE ONLY GILBARCO AUTHORIZED REPLACEMENT PARTS

IMPORTANT: *Specify Model and Serial Number of Lift. Also Symbol Number and Name of Part.*

DRIVE SIDE

PARTS LIST - F-42W41 & F-42W51 LIFTS

PANZITTA SALES & SERVICE
72 George Avenue
Wilkes-Barre, PA 18705
570-822-6720 800-822-6720
www.panzittasales.com



T13992

Code No.	No. Req.	Symbol No.	Description
1	1	R18220-29	Clevis
2	1	R18220-11	Chain
3	2	R18220-30	Clevis Pin
4	1	R18220-31	Clevis
5	1	R18220-32	Retain Pin

Code No.	No. Req.	Symbol No.	Description
6	2	R18220-198	Cotter Pin
7	2	R18220-182	Hex. Nut M24
8	1	R18220-183	Hex. Nut M24
9	4	R18220-197	Cotter Pin

USE ONLY GILBARCO AUTHORIZED REPLACEMENT PARTS
 IMPORTANT: *Specify Model and Serial Number of Lift. Also Symbol Number and Name of Part.*

CARRIAGE, DRIVE

PARTS LIST - F-42W41 & F-42W51 LIFTS

PANZITTA SALES & SERVICE
72 George Avenue
Wilkes-Barre, PA 18705
570-822-6720 800-822-6720
www.panzittasales.com

CODE NO. 24, PAWL

Determine which
pawl is on your lift by
measuring to the hole.



R18220-42

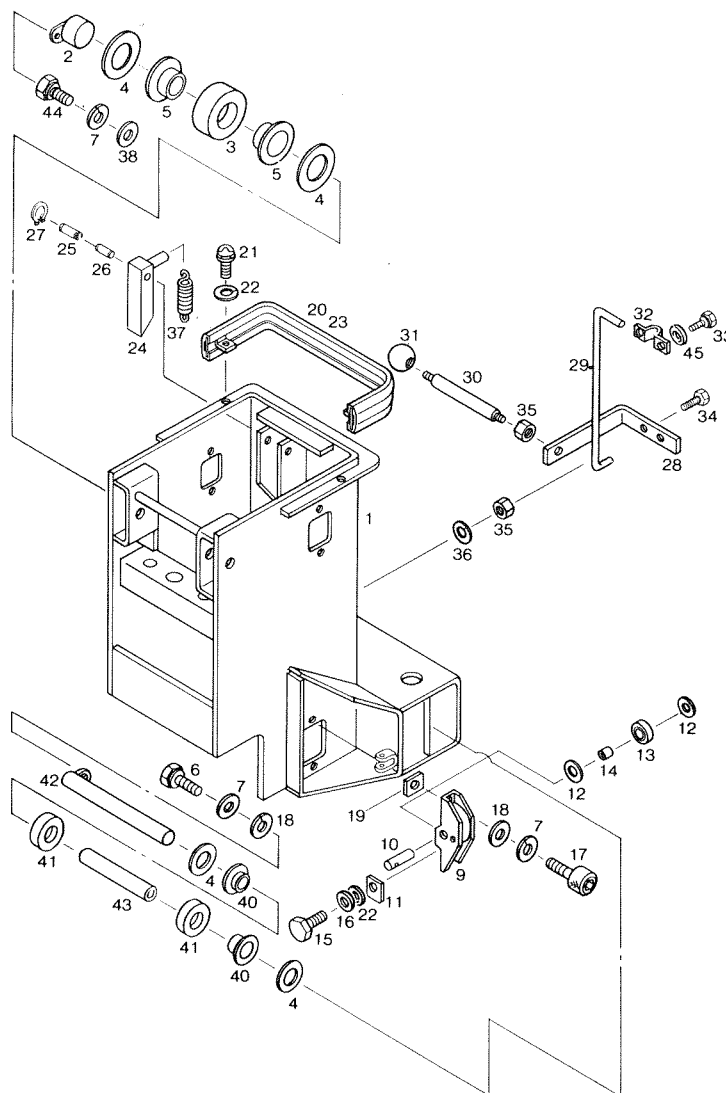


R18220-42A

CODE NO. 1, DRIVE CARRIAGE

Use drive carriage
R18220-67 if your
lift has pawl
R18220-42.

Use drive carriage
R18220-67A if your
lift has pawl
R18220-42A.



T13993

Code No.	No. Req.	Symbol No.	Description
1	1	See Above	Carriage, Drive
2	2	R18220-36	Shaft
3	2	R18220-04	Roller
4	6	R18220-05	Thrust Washer
5	4	R18220-16	Bearing
6	1	R18220-152	Hex. Head Bolt M8 x 5/8
7	11	R18220-187	Lock Washer M8
8	*		
9	4	R18220-08	Housing, Roller
10	4	R18220-09	Shaft
11	4	R18220-66	Retainer, Shaft
12	8	R18220-07	Thrust Washer
13	4	R18220-06	Roller, Side
14	4	R18220-18	Bearing
15	4	R18220-149	Hex. Head Bolt M6 x 3/8
16	4	R18220-186	Lock Washer M6
17	8	R18220-164	Hex. Socket Head Bolt M8 x 3/4
18	11	R18220-192	Flat Washer M8
19	8	R18220-62	Spacer
20	1	R18220-63	Buffer Support
21	2	R18220-169	Round Head Screw M6 x 3/8
22	6	R18220-191	Flat Washer M6

Code No.	No. Req.	Symbol No.	Description
23	1	R18220-13	Buffer
24	1	See Above	Pawl
25	1	R18220-38	Pin
26	1	R18220-19	Bearing
27	2	R18220-201	Retaining Ring "C" Type
28	1	R18220-43	Bracket
29	1	R18220-44	Linkage
30	1	R18220-45	Handle, Lock Release
31	1	R18220-64	Ball
32	1	R18220-196	Clamp
33	2	R18220-167	Round Head Screw M5 x 3/8
34	1	R18220-157	Hex. Head Bolt M10 x 1
35	1	R18220-180	Hex. Nut M10
36	1	R18220-188	Lock Washer M10
37	1	R18220-20	Spring
40	2	R18220-17	Bearing
41	2	R18220-03	Roller
42	1	R18220-35	Shaft
43	1	R18220-37	Spacer
44	2	R18220-153	Hex. Head Bolt M8 x 5/8
45	2	R18220-185	Lock Washer M5

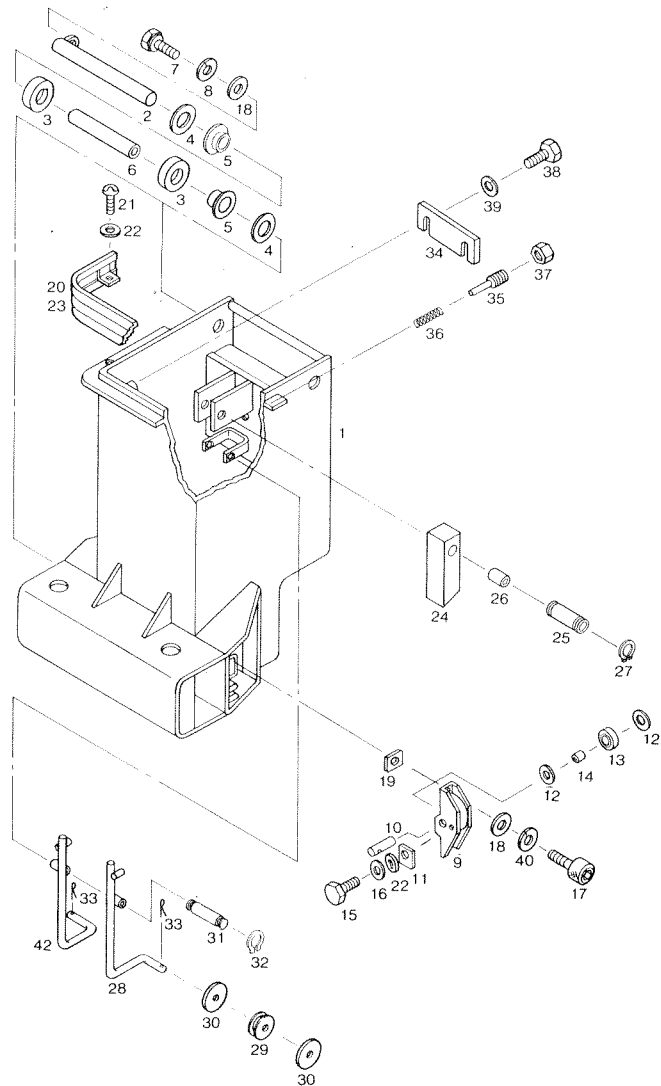
USE ONLY GILBARCO AUTHORIZED REPLACEMENT PARTS

IMPORTANT: Specify Model and Serial Number of Lift. Also Symbol Number and Name of Part.

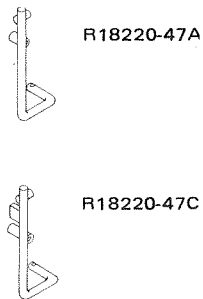
CARRIAGE, SLAVE

PARTS LIST - F-42W41 & F-42W51 LIFTS

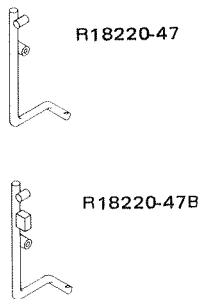
PANZITTA SALES & SERVICE
72 George Avenue
Wilkes-Barre, PA 18705
570-822-6720 800-822-6720
www.panzittasales.com



CODE NO. 42 LINKAGE R.H.



CODE NO. 28 LINKAGE L.H.



CODE NO. 1 SLAVE CARRIAGE

Use slave carriage R18220-68 with linkage R18220-47 & R18220-47A

Use slave carriage R18220-68A with linkage R18220-47B & R18220-47C.

T13994

Code No.	No. Req.	Symbol No.	Description
1	1	See Above	Carriage, Slave
2	2	R18220-35	Shaft
3	4	R18220-03	Roller
4	4	R18220-05	Thrust Washer
5	4	R18220-17	Bearing
6	2	R18220-37	Spacer
7	2	R18220-153	Hex. Head Bolt M8 x 5/8
8	2	R18220-187	Lock Washer M8
9	4	R18220-08	Housing, Roller
10	4	R18220-09	Shaft
11	4	R18220-66	Retainer, Shaft
12	8	R18220-07	Thrust Washer
13	4	R18220-06	Roller, Side
14	4	R18220-18	Bearing
15	4	R18220-149	Hex. Head Bolt M6 x 3/8
16	4	R18220-186	Lock Washer M6
17	8	R18220-164	Hex. Socket Head Bolt M8 x 3/4
18	10	R18220-192	Flat Washer M8
19	8	R18220-62	Spacer
20	1	R18220-63	Buffer Support
21	2	R18220-169	Round Head Screw M6 x 3/8

Code No.	No. Req.	Symbol No.	Description
22	6	R18220-191	Flat Washer M6
23	1	R18220-13	Buffer
24	1	R18220-46	Latch
25	1	R18220-38	Pin
26	1	R18220-19	Bearing
27	2	R18220-201	Retaining Ring "C" Type
28	1	See Above	Linkage Cable Sensing L.H.
29	2	R18220-21	Roller, Cable
30	4	R18220-22	Washer
31	1	R18220-39	Pin
32	2	R18220-200	Retaining Ring "C" Type
33	2	R18220-197	Cotter Pin
34	1	R18220-65	Bracket
35	2	R18220-48	Adjusting Screw
36	2	R18220-23	Spring
37	2	R18220-49	Hex Nut
38	2	R18220-155	Hex Head Bolt M10 x 5/8
39	2	R18220-188	Lock Washer M10
40	*		
42	1	See Above	Linkage, Cable Sensing R.H.

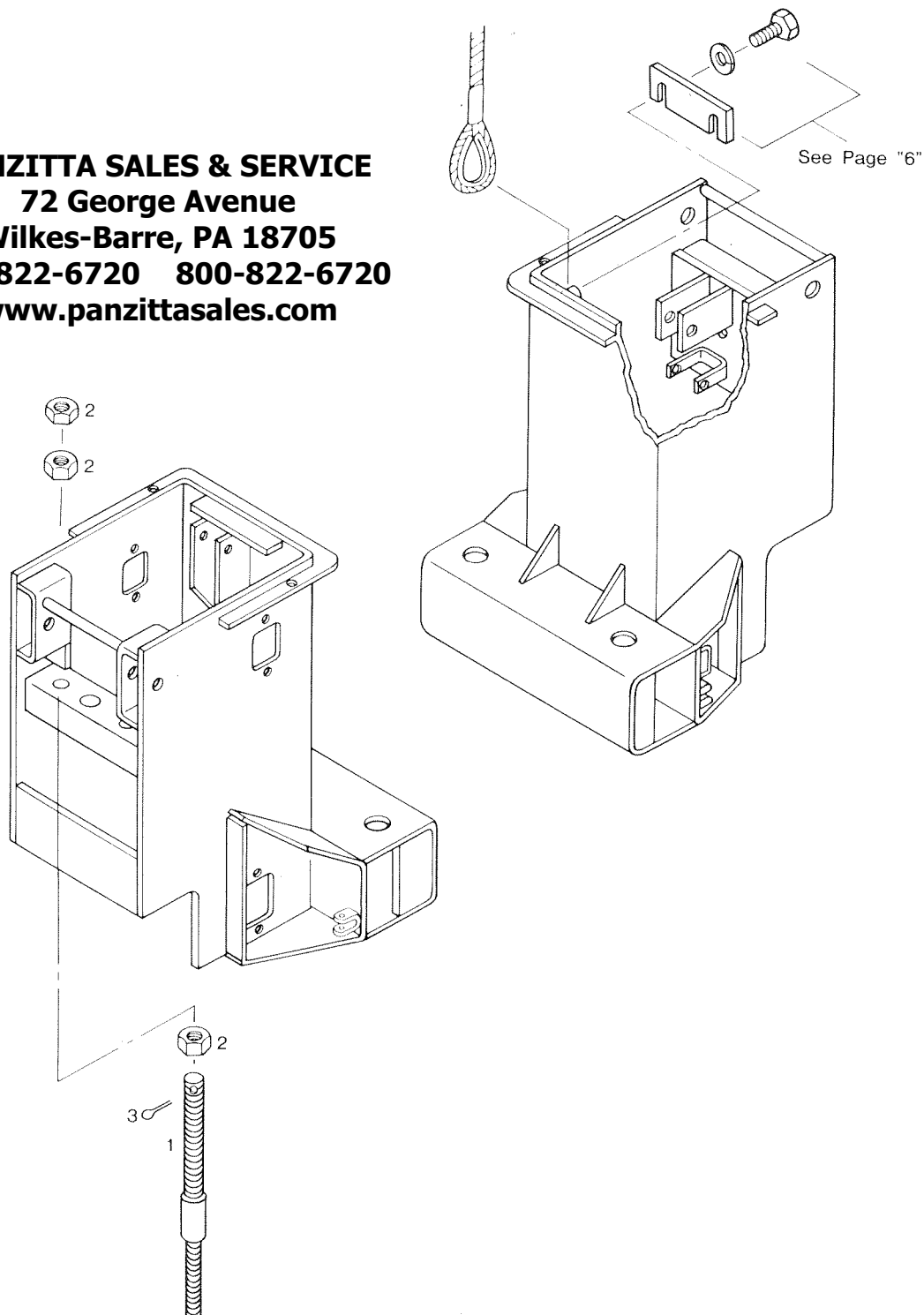
USE ONLY GILBARCO AUTHORIZED REPLACEMENT PARTS

IMPORTANT: Specify Model and Serial Number of Lift. Also Symbol Number and Name of Part.

CABLE ADJUSTING MEMBER

PARTS LIST - F-42W41 & F-42W51 LIFTS

PANZITTA SALES & SERVICE
72 George Avenue
Wilkes-Barre, PA 18705
570-822-6720 800-822-6720
www.panzittasales.com



R18238

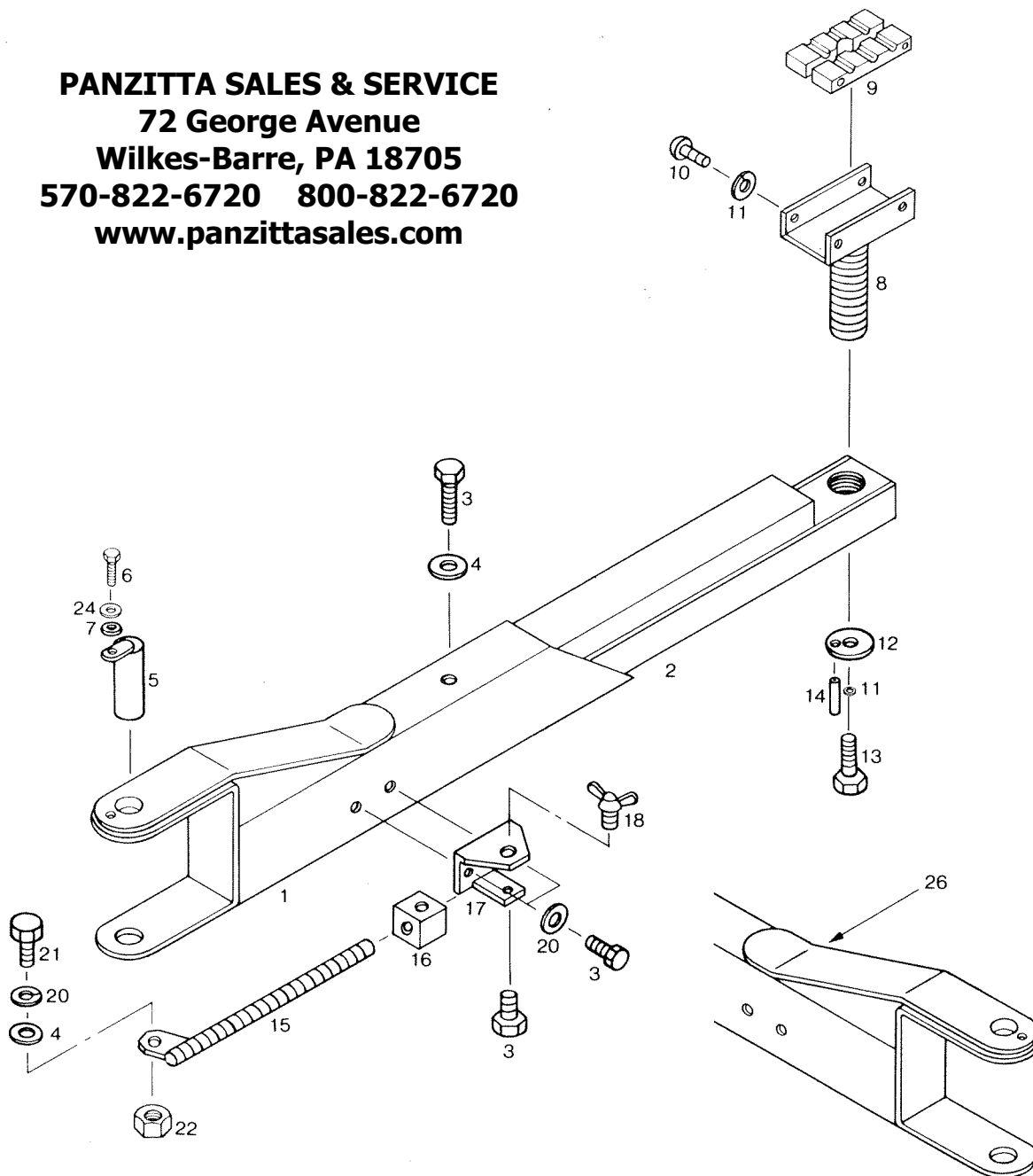
Code No.	No. Req.	Symbol No.	Description
1	2	R18220-10	Cable Assembly
2	6	R18220-181A	Hex, Nut M18
3	2	R18220-198	Cotter Pin

USE ONLY GILBARCO AUTHORIZED REPLACEMENT PARTS
IMPORTANT: Specify Model and Serial Number of Lift. Also Symbol Number and Name of Part.

SWING ARM

PARTS LIST - F-42W41 & F-42W51 LIFTS

PANZITTA SALES & SERVICE
72 George Avenue
Wilkes-Barre, PA 18705
570-822-6720 800-822-6720
www.panzittasales.com



R18239

Code No.	No. Req.	Symbol No.	Description
1	2	R18220-69	Swing Arm L.H.
2	4	R18220-70	Sliding Base
3	16	R18220-156	Stop Bolt M10 x 5/8
4	8	R18220-193	Flat Washer M10
5	4	R18220-50	Swing Arm Pivot
6	4	R18220-153	Hex. Head Bolt M8 x 5/8
7	4	R18220-192	Flat Washer M8
8	4	R18220-51	Pickup Pad Support
9	8	R18220-12	Pickup Pad
10	16	R18220-169	Round Head Screw M6 x 3/8
11	20	R18220-186	Lock Washer M6
12	4	R18220-52	Stop, Pickup Pad

Code No.	No. Req.	Symbol No.	Description
13	4	R18220-150	Hex. Head Bolt M6 x 1/2
14	4	R18220-199	Spring Pin
15	4	R18220-53	Arm Lock
16	4	R18220-54	Block
17	4	R18220-55	Arm Lock Support
18	4	R18220-176	Wing Bolt M10 x 3/4
20	12	R18220-188	Lock Washer M10
21	4	R18220-158	Hex. Head Bolt M10 x 1-1/8
22	4	R18220-180	Hex. Nut M10
24	4	R18220-187	Lock Washer M8
26	2	R18220-69A	Swing Arm (L.H.)

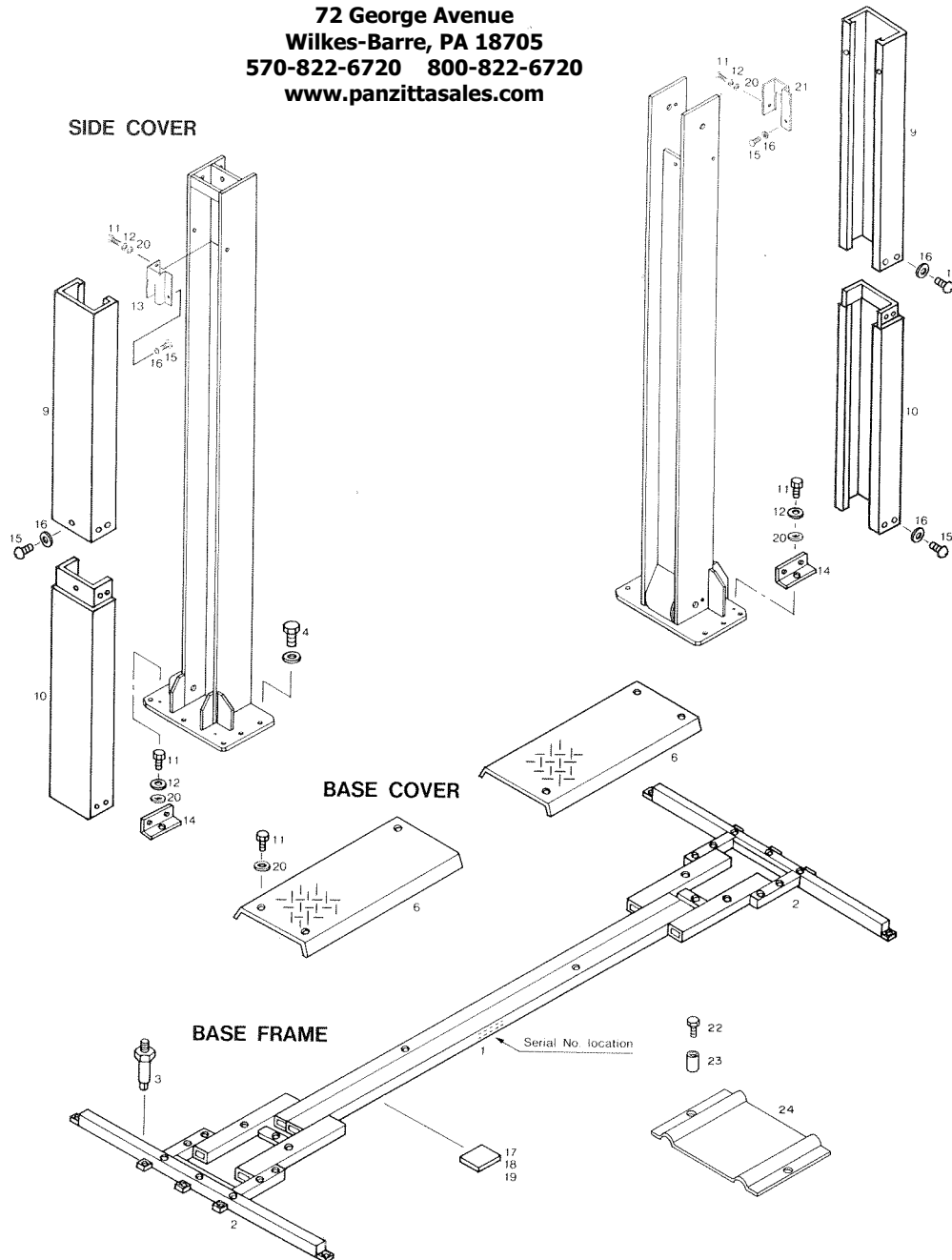
USE ONLY GILBARCO AUTHORIZED REPLACEMENT PARTS

IMPORTANT: Specify Model and Serial Number of Lift. Also Symbol Number and Name of Part.

COVERS AND BASE FRAME

PARTS LIST - F-42W41 & F-42W51 LIFTS

PANZITTA SALES & SERVICE
 72 George Avenue
 Wilkes-Barre, PA 18705
 570-822-6720 800-822-6720
 www.panzittasales.com



T13995

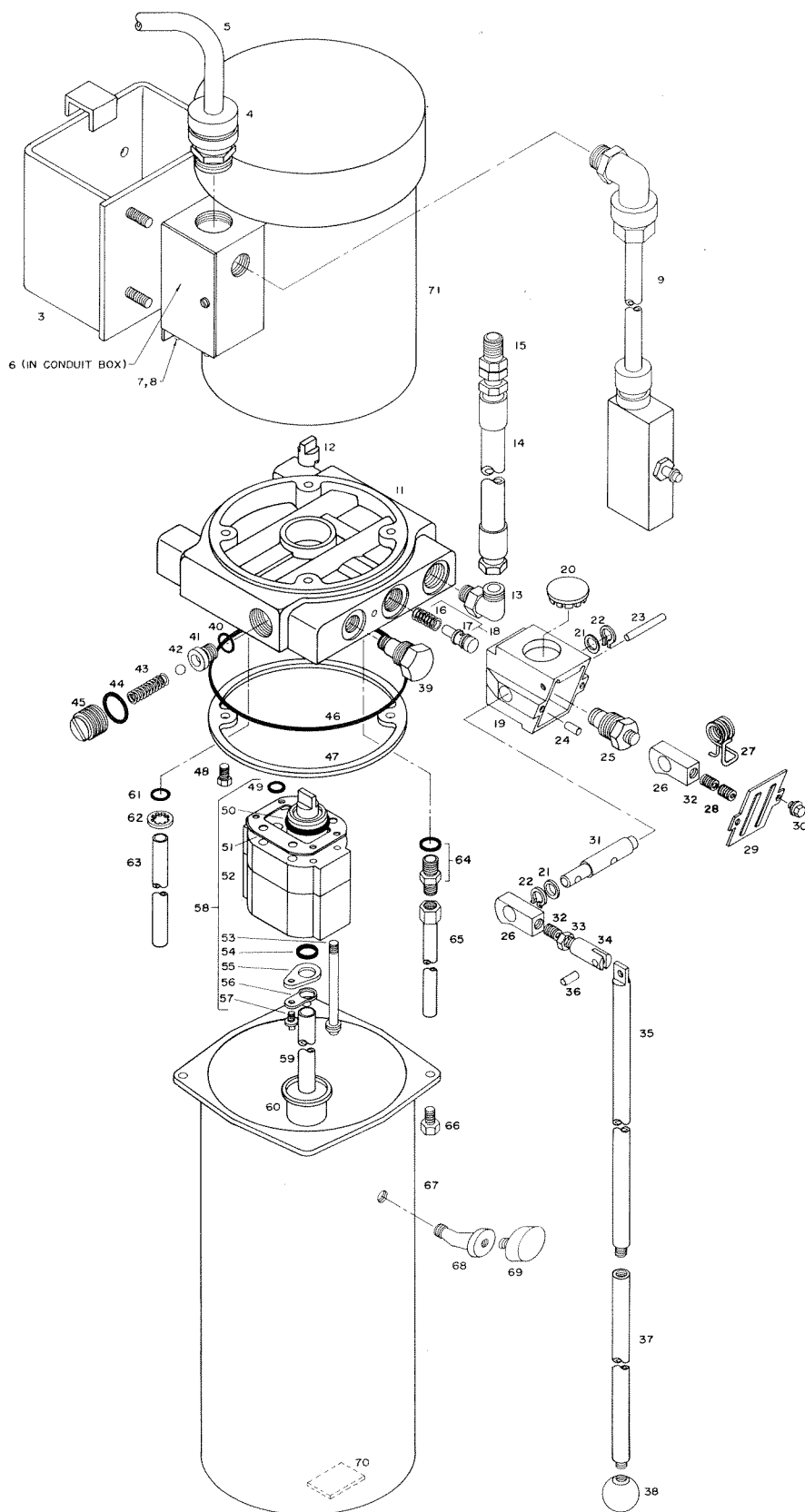
Code No.	No. Req.	Symbol No.	Description	Code No.	No. Req.	Symbol No.	Description
1	1	R18220-74	Base Frame	13	2	R18220-78	Side Cover Upper Support L.H.
2	2	R18220-75	Aux. Base Frame	14	4	R18220-79	Side Cover Lower Support
3	12	K90641	Anchor Bolt	15	22	R18220-169	Round Head Screw M6 x 3/8
4	14	R18220-202	Hex. Head Bolt M20 x 2	16	22	R18220-191	Flat Washer M6
5	*			17	10	R18220-80	Shim
6	2	R18220-71	Base Cover	18	10	R18220-81	Shim
7				19	10	R18220-82	Shim
8				20	14	R18220-192	Flat Washer M8
9	2	R18220-76	Upper Side Cover	21	2	R18220-78A	Side Cover Upper Support R.H.
10	2	R18220-77	Lower Side Cover	22	2	K03782	Hex Head Bolt 5/16 - 18 x 1-3/4
11	14	R18220-153	Hex. Head Bolt M8 x 5/8	23	2	K79695	Expansion Shield
12	8	R18220-187	Lock Washer M8	24	1	T07915	Wheel Stop

USE ONLY GILBARCO AUTHORIZED REPLACEMENT PARTS

IMPORTANT: Specify Model and Serial Number of Lift. Also Symbol Number and Name of Part.

POWER UNIT

PARTS LIST - F-42W41 & F-42W51 LIFTS



T13983

USE ONLY GILBARCO AUTHORIZED REPLACEMENT PARTS
 IMPORTANT: *Specify Model and Serial Number of Lift. Also Symbol Number and Name of Part.*

POWER UNIT PARTS LIST

PARTS LIST - F-42W41 & F-42W51 LIFTS

PANZITTA SALES & SERVICE
72 George Avenue
Wilkes-Barre, PA 18705
570-822-6720 800-822-6720
www.panzittasales.com

Code No.	No. Req.	Symbol No.	Description
1	1	T13983-01	Power Unit Complete 1PH., 208V - 230V
1	1	T13983-02	Power Unit Complete 3PH., 200V - 230V
3	1	T13983-03	Mounting Bracket
4	1	T13983-04	Cord Grip (3PH)
5	1	T13983-05	Cord (3PH)
6	1	T13983-06	Contactors (3PH)
7	2	T13983-07	Round Hd. Screw # 6-32 (3PH)
8	2	T13983-08	Machine Screw Nut (3PH)
9	1	T13983-09	Switch & Cord Assembly (1PH)
9	1	T13983-10	Switch, Box & Cord Set (3PH)
11	1	T13983-11	Adaptor
12	1	T13983-12	Coupling
13	1	T13983-13	Tube Fitting Body
14	1	T13983-14	Hose
15	1	T13983-15	Tube Fitting Body
16	1	T13983-16	Spring
17	1	T13983-17	Flow Control Spool Assembly
18	1	T13983-18	Flow Control Valve Kit for 3 G.P.M.
19	1	T13983-19	Bracket
20	1	T13983-20	Spring Plug
21	2	T13983-21	Washer
22	2	T13983-22	Snap Ring
23	1	T13983-23	Roll Pin
24	1	T13983-24	Roll Pin
25	1	T13983-25	Return Valve Assembly
26	2	T13983-26	Cam
27	1	T13983-27	Spring
28	1	T13983-28	Soc. Set Screw 5/16 -18
29	1	T13983-29	Cover
30	2	T13983-30	Hex Hd. Thd. Forming Screw, #5 -40 x 1/4
31	1	T13983-31	Pivot Pin
32	2	T13983-32	Soc. Set Screw 5/16 -18
33	1	T13983-33	Hex Jam Nut, 5/16 -18
34	1	T13983-34	Clevis Stud
35	1	T13983-35	Handle
36	1	T13983-36	Roll Pin
37	1	T13983-37	Handle Extender
38	1	T13983-38	Ball
39	1	T13983-39	Check Valve Assembly
40	1	T13983-40	"O" Ring
41	1	T13983-41	Ball Seat
42	1	T13983-42	Steel Ball
43	1	T13983-43	Spring
44	1	T13983-44	"O" Ring
45	1	T13983-45	Adjusting Screw
46	1	T13983-46	"O" Ring
47	1	T13983-47	Retainer
48	2	T13983-48	Hex Hd. Thd. Forming Screw, # 8 -32 x 1/4
49	1	T13983-49	"O" Ring
50	1	T13983-50	"O" Ring
51	1	T13983-51	Gasket
52	1	T13983-52	Fluid Pump
53	4	T13983-53	12 PT Hex Hd. Screw, 1/4 -20 x 2
54	1	T13983-54	"O" Ring
55	1	T13983-55	"O" Ring Retainer (Inlet Tube)
56	1	T13983-56	Tube Locking Spring (Inlet Tube)
57	1	T13983-57	Hex Hd. Thd. Forming Screw, 1/4 -20 x 3/8
58	1	T13983-58	Pump and Parts (No.'s 49 thru 57)
59	1	T13983-59	Inlet Tube
60	1	T13983-60	Inlet Strainer
61	1	T13983-61	"O" Ring
62	1	T13983-62	Push On Ring (Relief Tube)
63	1	T13983-63	Relief Tube
64	1	T13983-64	37° Flare Steel Tube Fitting Body
65	1	T13983-65	Return Tube Assembly
66	4	T13983-66	Hex Hd. Thd. Forming Screw, 1/4 -20 x 1/2
67	1	T13983-67	Reservoir
68	1	T13983-68	Black Elbow
69	1	T13983-69	Breather
70	1	T13983-70	Magnet
71	1	T13983-71	AC Motor, 1PH, 208V - 230V
71	1	T13983-72	AC Motor, 3PH, 200V - 230V

USE ONLY GILBARCO AUTHORIZED REPLACEMENT PARTS
 IMPORTANT: *Specify Model and Serial Number of Lift. Also Symbol Number and Name of Part.*



PANZITTA SALES & SERVICE
72 George Avenue
Wilkes-Barre, PA 18705
570-822-6720 800-822-6720
www.panzittasales.com