

# Challenger Lifts, Inc.

P/N 37103

39,000

Mechanical Lock Release Kit  
Installation Manual

*convert from  
air locks?*

*We Lift  
America!*

**Challenger  
Lifts**

*And The World*

## IMPORTANT

READ THIS MANUAL COMPLETELY BEFORE INSTALLING OR  
OPERATING THE LOCK RELEASE KIT

200 CABEL STREET, P.O. BOX 3944  
LOUISVILLE, KENTUCKY 40201-3944

OFFICE (502) 625-0700

FAX (502) 587-1933

**MECHANICAL LOCK RELEASE KIT P/N 37103**

37,000  
39,000 only

DESCRIPTION	PART NO.	QUANTITY
Installation Manual	37110	(1) ea. <input type="checkbox"/>
Cable Kit	37104	(1) ea. <input type="checkbox"/>
Clevis	37096	(2) ea. <input type="checkbox"/>
Stop	37097	(2) ea. <input type="checkbox"/>
Push Pull Cable 1/16" x 23' <i>part 7227-72</i>	37099	(1) ea. <input type="checkbox"/>
Casing 3/16" x 22'5"	37100	(1) ea. <input type="checkbox"/>
Cable End Cap	37102	(2) ea. <input type="checkbox"/>
Hex Nut 1/4-20	37112	(4) ea. <input type="checkbox"/>
Clevis Pin Kit	37119	(3) ea. <input type="checkbox"/>
Clevis Pin	37107	(1) ea. <input type="checkbox"/>
Retaining Ring	37108	(2) ea. <input type="checkbox"/>
Tee Handle Assembly <i>part 7227-68</i>	37098	(1) ea. <input type="checkbox"/>
T" Handle	37105	(1) ea. <input type="checkbox"/>
Cable (Clevis x Threaded End)	37106	(1) ea. <input type="checkbox"/>
Torsion Spring <i>7227-66</i>	37095	(1) ea. <input type="checkbox"/>
Wire Tie	31118	(4) ea. <input type="checkbox"/>
Adhesive Tab	31119	(4) ea. <input type="checkbox"/>

Packer \_\_\_\_\_ Checker \_\_\_\_\_

03/05/99

P/N 37109

## Mechanical Lock Release Kit Installation Manual

13. Insert the cable assembly through the cable end cap, making sure the cable casing is fully seated.
14. Insert the internal cable through the clevis.
15. Insert the internal cable through the cable stop so it extends beyond the stop 1/4 inch, crimp so the clevis cannot be removed.
16. Attach the clevis to the top hole of the power side locking pawl using the clevis pin and retainer rings.
17. Attach the tee handle assembly to the bottom hole of the power side locking pawl using the clevis pin and retaining rings. The complete assembly of the power side should be as seen in Figure 4.

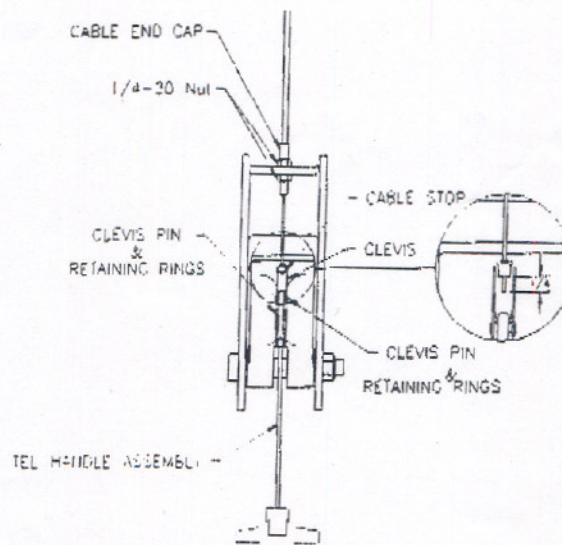


Figure 4

18. Raise the carriages slightly. Release the locks and lower the carriages fully.
19. Pull downward on the tee handle and observe the operation of both locking pawls. Both locking pawls should fully open. Adjust cable tension as needed by backing the cable end cap out of the terminal block on each column and tighten the lock nut.
20. Install the plastic covers on both columns.

## Mechanical Lock Release Kit Installation Manual

5. Route the push-pull cable assembly up the power column, across the overhead and down the idler column. An approximately equal amount of cable should be extending down each side. **Care must be taken that the push-pull cable does not interfere with the synchronizing cables or hydraulic cylinder.**
6. Assemble one 1/4-20 stop nut to the cable end cap, making sure to thread the nut to the bottom of the threaded portion. Install the cable end cap assembly in the terminal block on the idler side by trapping it with another 1/4-20 nut. Make sure the end cap is fully inserted and threads are exposed.
7. Insert the cable assembly through the cable end cap, making sure the cable casing is fully seated.
8. Insert the internal cable through the clevis.
9. Insert the internal cable through the cable stop so it extends beyond the stop 1/4 inch, crimp so the clevis cannot be removed.
10. Attach the clevis to the bottom hole of the idler side locking pawl using the clevis pin and retaining ring. The complete assembly for the idler column should be as shown in Figure 3.

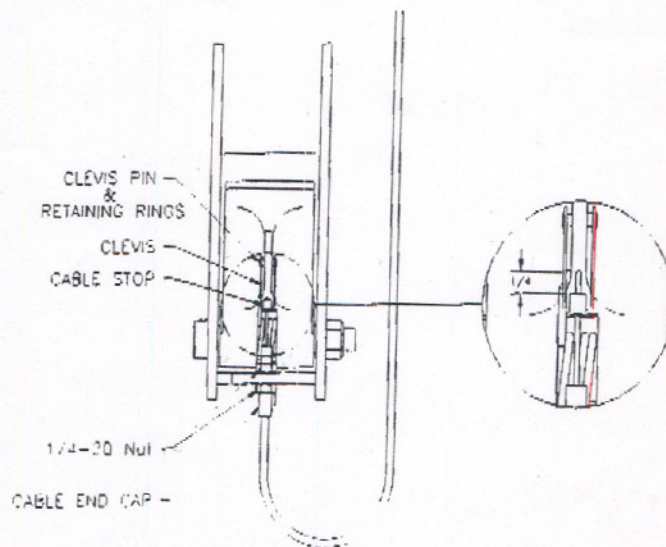
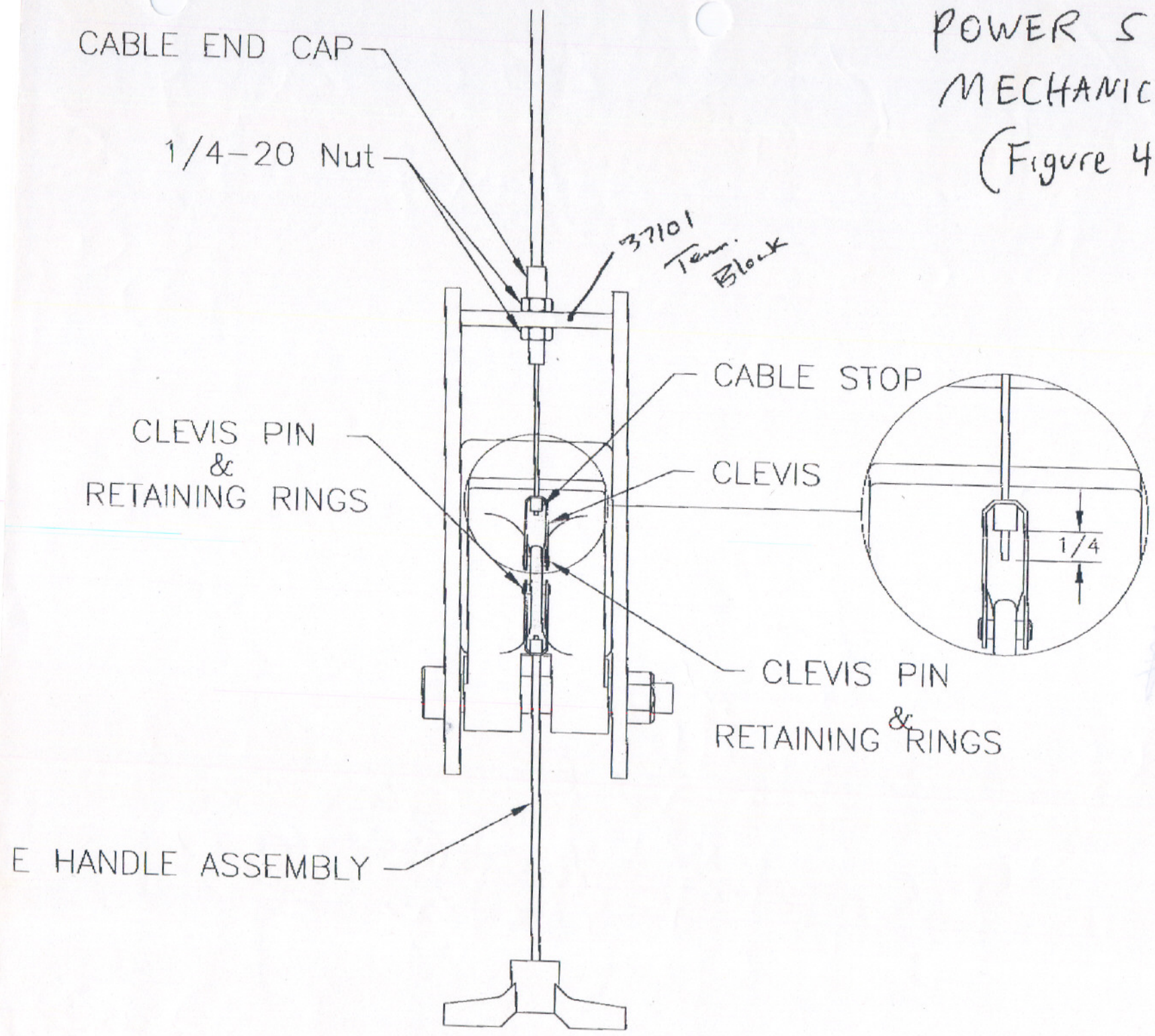


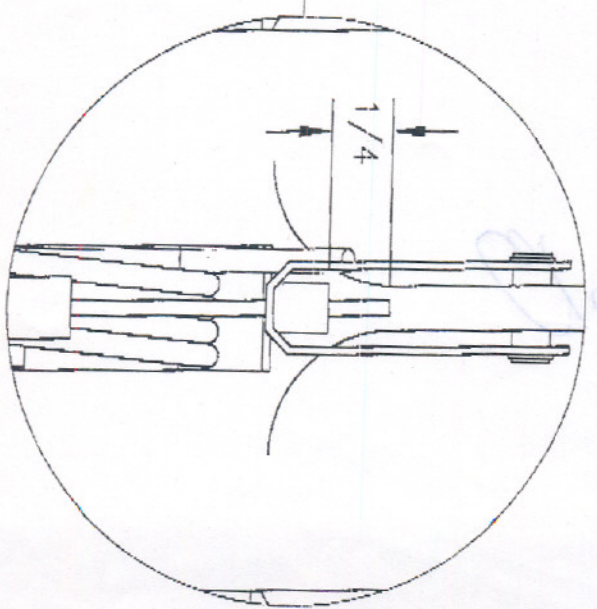
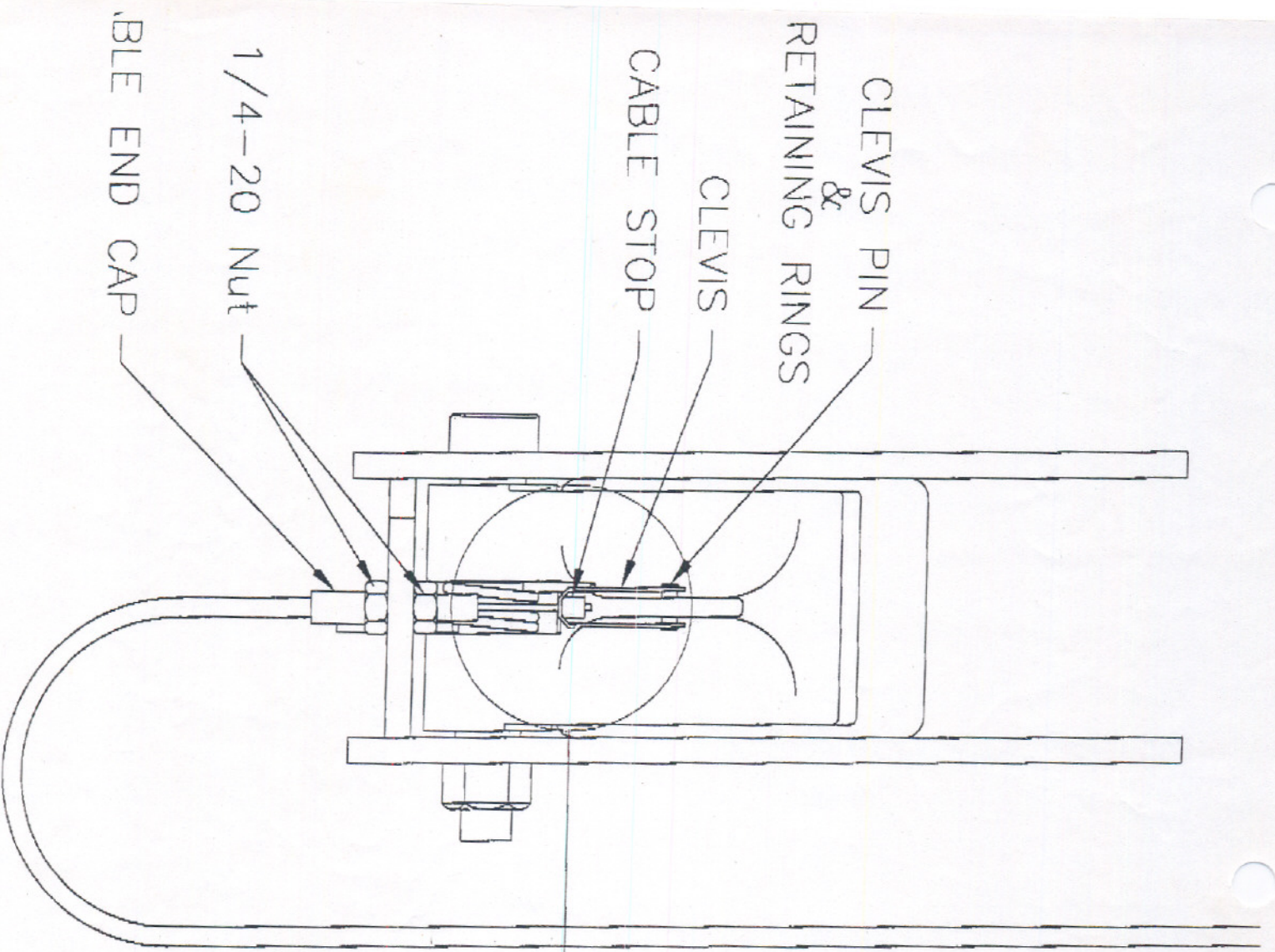
Figure 3

11. Raise the carriages and engage the locks in the lowest locking position.
12. Assemble one 1/4-20 nut to the cable end cap, making sure to thread the nut to the bottom of the threaded portion. Install the cable end cap assembly in the terminal block on the power side by trapping it with another 1/4-20 nut. Make sure the end cap is fully inserted and threads are exposed.

POWER SIDE  
MECHANICAL LOCK  
(Figure 4)



REC'D 884000  
0310  
882-288



IDLER SIDE  
 MECH. LOCK  
 (Figure 3)

## Mechanical Lock Release Kit Installation Manual

1. Verify all parts have been received against the packing list. Record and report any shortages to Challenger Lifts, Inc. Immediately.
2. Make sure both carriages are completely lowered.
3. Install the locking pawl on the power column as shown in Figure 1.

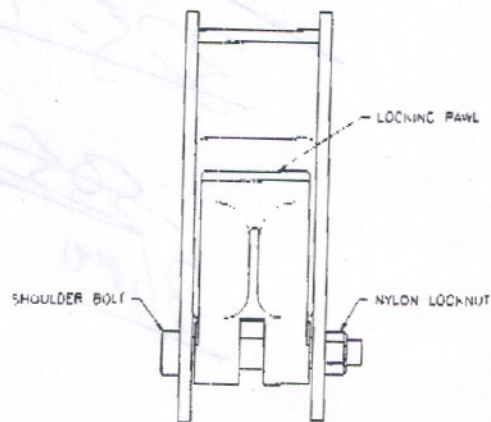


Figure 1

4. Install the locking pawl and torsion spring on the idler column as shown in Figure 2.

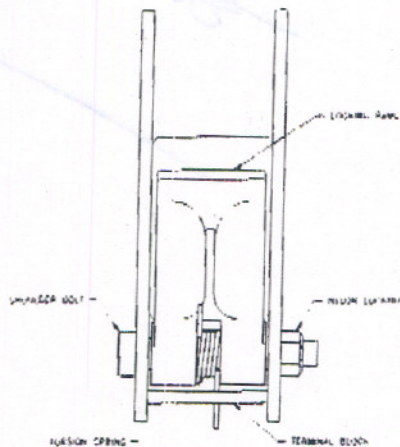


Figure 2