

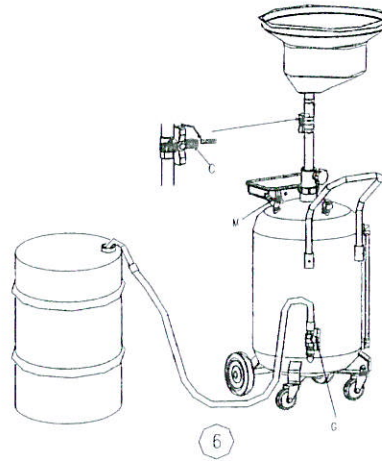


CAUTION

Never fill the reservoir over the maximum level indicated by the gauge that is located on the side of the reservoir.

EMPTYING IMPORTANT!

Fig.6: Make sure that valve C is closed. Make sure that screw E is tightened. Attach the end of the drain hose to a suitable waste oil container. Open ball valve G. Connect compressed air (7psi/0.5 Bar) to quick couple M. After the fluids have been transferred from the unit's reservoir tank close ball valve G. The unit is equipped with a safety valve that has been factory calibrated at 1 bar (14 PSI).

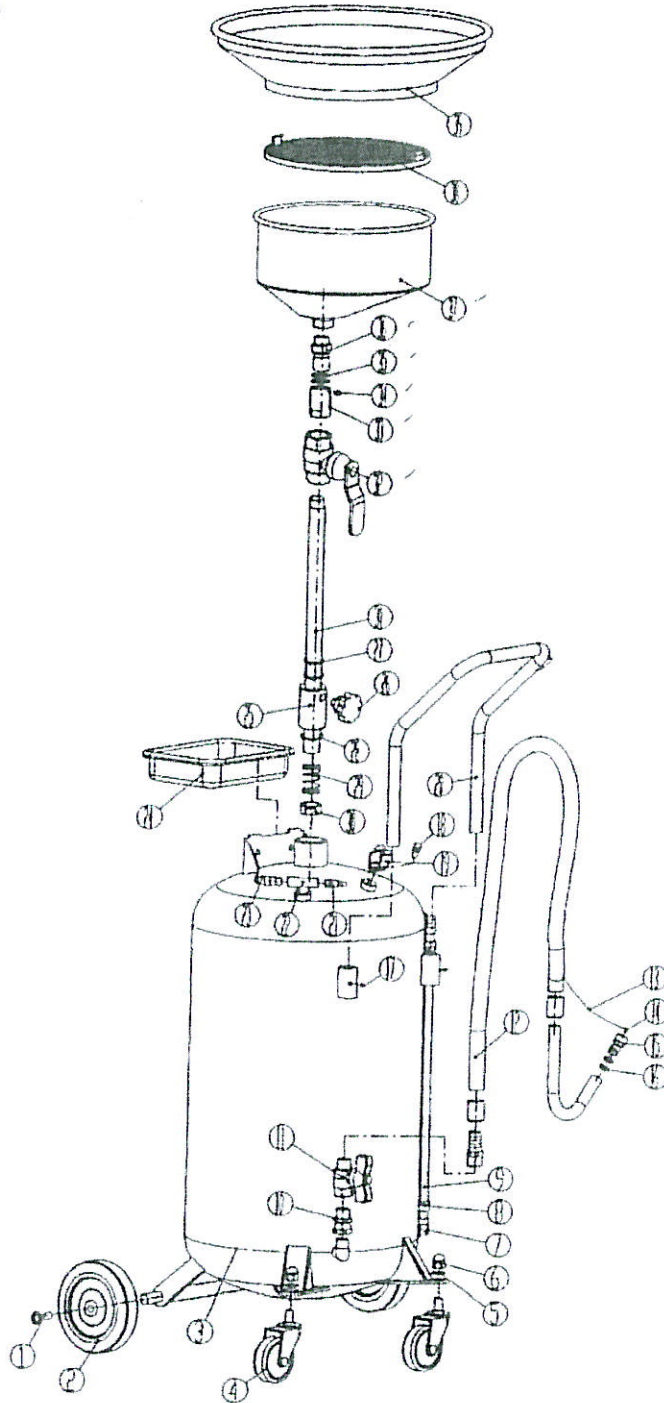


PART LIST TIM-317 -

No.	Description	Quantity	No.	Description	Quantity
1	BOLT	2	21	PLUGS	1
2	WHEELS	2	22	T ADAPTER	1
3	RESERVOIR 90L	1	23	SAFETY VALVE	1
4	SWEVELLING WHEELS	2	24	TOOL TRAY	1
5	PLAIN WASHER	2	25	SEAT	1
6	ACORN NUT	2	26	HANDWHEEL	1
7	ELBOW	2	27	O-RING 26.5X3.55	2
8	RING	2	28	O-RING 42.5X2.65	1
9	TUBE WITH LABEL	1	29	SPRING	1
10	DOUBLE END ADAPTER	1	30	NUT	1
11	BALL VALVE	1	31	ADJUSTING STEEL TUBE	1
12	DISCHARGING HOSE	1	32	BALL VALVE	1
13	CHAIN	1	33	ROTOR	1
14	PAN HEAD SCREW	1	34	SCREW	1
15	STUFF	1	35	O-RING 28X2.65	2
16	O-RING 16X2.4	2	36	BOWL SUPPORTING TUBE	1
17	SCREW WITH CHAMFERED END	2	37	OIL COLLECTING BOWL	1
18	SCREW	1	38	FILTRATING PLANK	1
19	SET OF SCREWS FOR RESERVOIR	1	39	EXTENSION FUNNEL	1
20	HANDLE	1			



TIM-317



AMERICAN LUBRICATION EQUIPMENT CORPORATION
11212A McCORMICK ROAD, HUNT VALLEY, MD 21031
WWW.AMERICANLUBE.COM
PHONE: 888-252-9300
FAX: 800-759-2637