



McGEE COMPANY

SINCE 1951



Denver • Salt Lake
Albuquerque • Dallas

1-800-525-8888

www.McGeeCompany.com

Automotive Service Equipment

Tire Service Supplies

Retreading Equipment & Supplies

Passenger/Truck/OTR

EXPIRES 1/31/18

All prices are F.O.B. our warehouse unless otherwise specified. Lease figures are approximate and subject to change.

PRICES SUBJECT TO CHANGE
VISA AND MASTERCARD ACCEPTED



Super Tough Hand Scrub

395-00640 TS64 64 oz. tub

\$14.95



*"The best hand
cleaner available"*

Leaves hands soft
and chap free.
Removes dirt and
grease quickly.

Now! Tuff Scrub Cleaner in a liquid

TS1GAL - Easy to use pump style - **\$21.95**

Locking Lug Master Key Set

The set was designed explicitly for the purpose of removing locking lug nuts on aftermarket wheels. The 16 piece set comes with both standard (SAE) and metric pieces that can be used on Splines, Star, Hex and Fluted Hex fasteners.

40201283.....**\$69.00**



Largest stock of tire chains in the Rocky Mountain Area!



Wide Base Truck
Cam Chains



AutoSock



DUO Tractor Chains



\$139.95
AB500

The new **Air Blast 500** bead seater features the new hi-flow butterfly valve with forward pivot handle. This design allows for quicker release and maximized air flow to the tire.



Fast
Release
Hi-Flow
Valve



Hi Tactile Gloves

- Easy to clean
- Long lasting
- Light and durable
- Outlast other gloves 10 to 1!

Go Jo®



\$5.79 pr.
Large # 143212
Ex-Large # 143312



**Cotton Weave
Blue Poly
Palm Glove**

C122 \$1.90/pr
\$.99/pr. per doz

Family owned since 1951, the McGee Company has always operated with one simple goal: To anticipate the needs of our customers by having the right product available to them — right when they need it. Founded by Charles J. McGee senior, in lower downtown Denver, McGee Company originally sold rubber for retreading. Soon, the business expanded to meet all the needs of the tire shop. Meeting those requirements meant that McGee needed to be able to install and service equipment and so AirMac Service was born. McGee Company moved to its current location at 1140 S. Jason St. in 1961.

As the McGee territory grew, so did the warehousing needs of the company. McGee set up



branches in Salt Lake City and Albuquerque. In the mid-seventies, the second generation of leadership entered McGee with Joanne and Chuck McGee. The acquisition of Paris Rubber Supply in 1992 continued the family feel for McGee Company as second generation employees from Paris & McGee began working in the various branches and taking the company to new heights.

Expansion continued in Texas with David Lane & Sons in 1994 and Burdette Supply in Oklahoma City in 1999. Southern states are now serviced from a warehouse facility in Dallas, Texas. The owners of each acquired company are actively involved with day to day operations for the McGee Company. Since 2015 McGee Company added service and installation available in the

Salt Lake City market for lifts, lubrication systems, and compressed air systems. Five D supply of Kansas came aboard with McGee company in late 2016 to increase the foot print throughout the state. The average employment time speaks for itself, with 80% of employees working for McGee Company for over ten years. Here at McGee Company, we are an extended family and strive to bring the American West the largest inventory of products possible to best serve our customers every day.



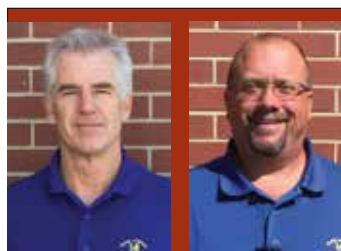
ROTARY LIFTS

3



The World's Most Trusted Lift . . .

Since 1925, Rotary Lift has built quality in to everything we do. As the oldest U.S. lift manufacturer, our lifts are built and cycle tested for years of trouble-free service and ALI certification. Rotary lifts are backed by full warranty & supported by McGee Company.



Greg Walter

Gary Watts

McGee's Equipment Specialists

Two-post lifts

- Original "Double S" single piece column design maximizing strength
- Slider block bearings of Tivar 1000 polyethylene that self-lubricate and are maintenance free
- Overhead padded switch bar
- Adjustable height options with column extensions
- Asymmetrical and symmetrical designs to suit your needs
- Trio three stage arms for asymmetrical lifts
- Shockwave (10,000-12,000lbs) and standard (10,000-18,000lbs) configuration available in two-post
- Multi-position column locks



SPOA12TA

**Call for pricing
1-800-525-8888**

All new Trio

2-piece, 3-stage arms
Integrated, patented "third" stage adapter adjustment easily slides to a pinpoint location

Inground Smartlifts

- 10,000-12,000 lbs capacity models available
- High efficiency power and air per lifting cycle, selected in key LEED projects
- Reduces space usage and allows more lifts
- Trio three stage arms for pinpoint location
- Shockwave or standard available



SL210

Smartlift Green Features

- Uses only 19 quarts "Bio-Fluid"
- An entirely closed system housed in a recycled polymer composite containment which protects the environment and the lift
- The Smartlift uses only .045 kWh of electricity and .01 cfm of air per lifting cycle
- Steel components and housing can be harvested and recycled again at the end of the lift's lifecycle



SHOCKWAVE equipped lifts

- 2X Faster rise and descent than standard lifts
- DC powered which reduces installation/operating costs
- Two standard Group 24 batteries charged by the 110v that runs the lift removes the need for expensive 220v wiring and can operate during power loss
- Spotline motion activated laser helps spot vehicles the first time
- Available on lifts from 7,000-12,000 lbs

ARO14 Alignment lift

- Available in open or closed front in shockwave or standard
- 14,000 lbs capacity
- Rise to over 78", industry best, for extra work area under the vehicle
- Louvered ramps with polymer rollers for increased traction and floor protection
- Extended length model available



ARO14



**RJ7000Z
Rolling Jacks
Available!**

78" Rise



RLP77

RLP77 Double Scissor Lift

- 7,700 lbs capacity drive over pad service lift
- Low profile double scissor designed with the industry's most innovative equalization & locking systems
- Hinged ramps drop down to a 65 angle for easy access to wheel service
- Flush mount kit available!

Mach Flex Mobile Column Lifts

- New higher column capacity 18,800 lbs
- Easy to use intuitive remote control operation
- Control all columns from anywhere in the bay with remote that comes with columns
- Includes LockLight™ on each column
- Vehicle Height and Weight digital display gauges



**2, 4, 6, & 8 column
configurations
available!**



Our experts can help you design your air piping systems, lift installations, and lubrication systems to fit your needs.

Before any under vehicle service is performed by a technician, a lift should be set securely on its mechanical locks. But this doesn't always happen. Improper use can result in injuries and fines from agencies like OSHA and CCOHS. Either way, misuse of a lift's integrated locking system presents a major risk to a shop.



Norco 1/2 ton transmission Jack

- Fully adjustable universal saddle with adjustable corner brackets and safety chain, 72" raised height
- Safety overload system prevents jack from being used beyond rated capacity
- Foot operated pump and lowering pedals
- Two-stage flash chromed rams inhibit rust from entering hydraulic system
- Wide base with polyurethane wheels to protect floors.

72500E\$944.97

Air/Electric Utility Boxes

- Two 110v electric outlets and air connections mount easily to any column and provide quick access to utilities.
- The filter/regulator/lubricator extends the life of your airtools.



FA5911BK (with filter/regulator/lubricator)\$496.29

FA5910BK (without filter/regulator/lubricator)\$363.00



Each LOCKLIGHT™ includes:

- Indicator light assembly
- Pressure switch
- Mounting Bracket
- 10' of electrical wire
- Compatible with most surface and inground lifts using electric/hydraulic power units
- Retrofits to most existing lifts
- 110v and 220v configurations

Part #FA834/110v

Part #FA835/220v



Door Defender™

Rotary's new door defender allows technicians to easily enter and exit the vehicle without damaging their customer's vehicles. The door defender is a low profile solid rubber guard designed to fit over the two-post lift carriage. The N823 door defender kit includes: 1 door defender, adhesive to attach to the lift, a Rotary decal and instructions.

Model#N823



Norco under hoist stand 3/4 ton

- Lightweight, slender design makes handling easy, even in close quarters
- Quick adjust spin handle with thrust bearing eliminates wear and provides ease of turning under load
- Extended height 81"



81033A ~ \$91.34

Wheel Arm for lifts

\$149.95

- 100 lbs Capacity
- Set of two arms
- Comes with 2 magnetic tool trays, hex key, and mounting shims

92100



Wheel arms hold tires at the lift arm height – great for tire rotations and brake jobs



Two trays, hex key, and mounting shims included!

PP8S

\$2,199.00

F.O.B. Factory

GOLD CERTIFIED
8,000 LB. CAPACITY
72" Lifting Height



**VERSATILE TOOL
FOR AUTO LIFT
AND STORAGE
NEEDS**



Shown:
PP8S

Prebuilt Garage Kits!



\$104.99

GARAGE KIT 1
20 ft
1 outlet
1/2" (16 mm)
190 PSI pressure rate



\$164.99

GARAGE KIT 2
50 ft
2 outlets
1/2" (16 mm)
190 PSI pressure rate



\$194.99

GARAGE KIT 3
75 ft
3 outlets
1/2" (16 mm)
190 PSI pressure rate

*Additional fittings and
pipe available*

Call today for details!

1-800-525-8888

Professional compressed air piping system for your GARAGE and your SHOP!



8 gallon oil lift drain

- Reinforced base will not warp with hot oil
- Wide working range from 36.5-74"
- Low center of gravity for increased stability
- 4 swiveling, easy roll wheels
- Heavy adjustment clamp with large handle and large pour spout that is threaded.
- Built-in strainer with funnel

11102
\$120.37



AFF2145 \$299.99

700 lbs Telescopic Transmission

- Economical single stage ram design
- Adjustable saddle
- Large 360 swivel casters
- Safety overload system

Low Height	High Height	F/R Tilt	Head Width
53"	73"	12	10-14"

DL9

**9,000 LB.
CAPACITY**



\$2,095.00

- Padded shut off bar
- Powder coat finish
- Adapters and bracket included
- Self-setting locks
- Symmetric 2-post lift with asymmetric arm design

Pro-Park Lift Features:

- Exclusive adjustable lock ladder leveling system
- ALI/ETL Certified
- Powder coat finish
- Single point lock release
- Steel approach ramps included



X-Force UTV

FR2275P000BL

- Perfect for UTVs, motorcycles, golf carts, etc.
- 85" table length with ramps
- Diamond plate surface
- Powder coated
- Hydraulic operated/ conventional pedestal mounted controls



\$2,499.00

Make sure your lift is Gold Certified!

Direct-Lift's Pro Park series four-post lifts are now ALI Certified. It takes a combination of the design, engineering excellence and quality manufacturing to earn this certification. It is extra assurance for you that your lift meets the highest industry safety and performance standards. Look for the Gold label.



6 COATS DIRECT DRIVE WHEEL BALANCERS

Call today
for best
prices!

1-800-
525-8888



- Extended 3 year warranty



1400

STEP UP

1500

STEP UP

1600

- Direct Drive Motor
- Laser Guided Tape-A-Weight Operation
- Automatic Data Entry (Distance/ Diameter)
- Side Shadow Board with Basic Pro Kit
- Auto Start Hood
- Static-On-Screen
- New Display Mounting Bracket

- Direct Drive Motor
- Laser Guided Tape-A-Weight
- Side Shadow Board with Basic Pro Kit
- Auto Start Hood
- Static-On-Screen
- New Display Mounting Bracket
- Automatic Data Entry (Distance/ Diameter/Width)
- 12 o'clock Inboard Laser
- Stop, Lock & Index

- Direct Drive Motor
- Laser Guided Tape-A-Weight
- Automatic Data Entry (Distance/ Diameter/Width)
- Side Shadow Board with Basic Pro Kit
- Auto Start Hood
- New Display Mounting Bracket
- 12 o'clock Inboard Laser
- Stop, Lock & Index
- ProBalance Technology™
- Touchscreen

Powered by Direct Drive

- Motor and spindle are combined into single, pre-balanced assembly that always stays calibrated to zero.

Tire Bead Lubricant

- Dries fast
- Prevents rim slippage
- Prevents rust

A liquid bead lubricant for easier mounting of tires.

435-07001 (TL1)
5 gallon version MPL5

TL1
\$11.95



432-00750 #75 - Mounting Paste 7.7 lb.
432-01750 #75N - Low Profile Pail

Eases mounting of stiff, low-profile tires. Aids in faster bead sealing during inflation. Preferred when servicing tires on ABS-equipped or HP vehicles. Prevents

vibration complaints as a result of tire moving on wheel after balancing.

437-43006 #73 - Brush, Angled Applicator
Allows for proper application of mounting paste.



\$10.59

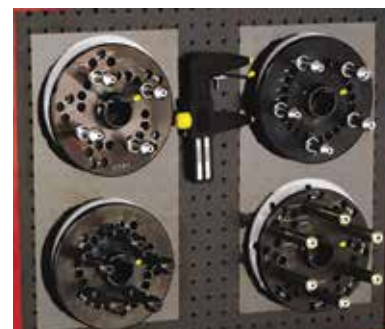
Laser Guided Operation

- Pinpoints the exact weight location, both radially and axially and eliminates trial and error.

Adjustable Pin Plates

Coats Adjustable Pin Plates offer one reliable system when balancing wheels. The pin plates are always ready for use, as they combine 15 plates into one convenient solution. These plates allow the technician the precision to achieve the ideal performance balance.

- Most consistent method for providing accurate mountings for a wide variety of tire and wheel assemblies.
- Adjustable design provides fast and easy clamping of tire and wheel assemblies.
- Lug clamping and centering of tire and wheel assembly prevents damage to alloy wheels.
- Can be used on any 40mm wheel balancer.



Pictured - PN 85610104 - with board
3,4,5 Lug Adjustable Pin Plate Set - **\$1,595.00**
Without board - 48399409 - **\$990.00**
but includes holding tree

TIRE BALANCER AND CHANGER ACCESSORIES 7

ProCollet Kit 40mm

- Two-sided, low taper collets - 9 each
- Standard cone upgrade
- Low taper provides improved centering at wheel hub for more accurate balancing results
- Clad wheel Problem Solver

Now \$595.00

Ascot No.	Mfg. No.	Description
483-40110	HW150400110	ProCollet Kit 40mm shaft, 52.5mm - 122mm range



483-40110
ProCollet Kit 40mm

The Low-Taper Collets are superior to standard cones because they have more contact area and engage the wheel at a better angle; they are also necessary for Clad Wheels because they are shorter and only contact the metal part of the wheel. They can be used for "standard" wheels as a replacement for the cones.

In Stock — Call for best price!

Light Truck Cone Kit #113276 482-11559 28mm

\$293.60

Allows balancing truck wheels with center holes from $4\frac{13}{16}$ " to $6\frac{7}{8}$ ". Used on rims with an alignment pin on the back. Double-sided cone fits all Coats balancers

40mm - 48340091 or 113277



\$28.95



**Model #61123
482-89011**

Balancer Calipers

Works on any passenger balancer. Equal to Coats 61123 or 309011

\$163.77



Part #85009998 08 40mm I.D. - Shaft, Hubnuts, & Press Drum

Nut-Slide, 2 Jaw, 40mm w/drum, for use on 700-1250 models with 40mm shaft

\$89.95



Model #112103

40mm I.D. - Shaft, Hubnuts, & Press Drum

Hub Nut, Handle, Solid, 45mm for standard thread pitch (not for XR-Series) 28mm - 110543

\$238.00



8500920401 Balancer Shaft 40mm Balancer Shaft for 850, 950, 1050, 1055, 1250, XR, & 1150 Models

Steel ProGrip Quick Nut with Handles and Pressure Cup



**HW124408006
\$238.36**

Creates pressure necessary for road force balancers.

HUNTER. COATS

All Hunter Models exc 700 and DSP9500 90-92; All Coats Models Quick Nut Only

Coats Models 700, 775, 800, 825, 850, 875, 925, 950, 1000, 1025, 1030, 1035, 1175, 1250, 1255 (40mm shaft upgrade), 6275HS

Slide Cover for Bead Lifting Tool

Protects custom rims.



85000783 - Slide Cover for Top of Bead Coats Lifting Tool - 10 pk **\$34.49**

RP640032 - 4 pk for Hunter tire machines Lever sleeve protector **\$34.24**

107985 Air Gauge for most Coats tire changers including 70X **\$39.95**



107985

Coats Leverless DuckHead®

Coats Leverless DuckHead® hook and tail booties provide the proper rim protection for all leverless DuckHead® systems. 89233409 6 hooks, 2 tails **\$97.74**



Pictured: PN 89233409

High Grip Jaw Protectors

Polymer jaw covers prevent metal-to-metal contact when performing external clamping. - TC500 Series Machine RP11811100358 - 8 ea. - **\$78.93**



TIRE CHANGER ACCESSORIES

Tire Changer Duckhead Specials!

Plastic Duckhead Kit

Part # 183061

444-01220

Special
\$26.85



Grey Plastic High Spoke Mount/Demount Duckhead® Tool

For Coats 50X and 70X machines
Part #184432



\$34.95

Head, Mount/Demount, Polymer - Red

Hunter TC3250/3500

(1 ea.) Part #2216752



\$18.95 ea.

Drop Center Tool

Part # 435685

402-72100

Special
\$39.95



A Must for "V" & "Z" Rated Tires

8560716108
Replacement black grip for new style Grip Max
Plus **\$39.97**
(8 each)



8500059408 Replacement white grip for old style Grip Max

\$39.86
(8 each)



Plastic Inserts for 182788 Metal Mount/Demount Head (Pkg of 2)

Model 182961

444-82788

\$6.53



Plastic Inserts for 182788 Metal Mount/Demount Head (Pkg. of 12)
Model 182963

444-82963

\$23.04



Mount - Demount Tools

Part # 85609418

444-00768

Special
\$112.49



For All Center- Post Tire Changers

Part # 181354

444-81354

Special
\$34.95

For All Rim Clamp/Tire Changers



5500 Low Profile Bead Lever Tool **Now \$49.95**

Designed by technicians to assist with hard to change low profile tires. The easy grip ergonomically designed handle allows the user needed leverage for the toughest of sidewalls while remaining a safe distance from the face of the wheel.



Plastic Handled Brass Sidewall Brush

- Densely packed brass bristles
- Great for cleaning white sidewall tires



Wooden Handled Wire Brush with Metal Scraper



Ascot No.	McGee No.	Description	Price
395-13124	99593	8" Plastic Handled Brass Sidewall Brush	\$4.57
535-00150	25150	14" Wooden Handled Wire Brush	\$4.95

For Coats 50X and 70X
Part # 182788



\$99.00

Hunter TC500 Series (1 ea.)

Part #RP118314813



\$33.00 ea.

Coat 85608959

Hybrid Duckhead Mount/Demount Head

The Coats Hybrid Duckhead Mount/Demount Head is a two piece design that combines the advantages of the traditional plastic and metal mount/demount heads into a no compromise mount/demount device exclusive to Coats Tire Changers.



\$134.98

Coats 8560896106
Hybrid Duckhead Tail
\$79.57 6 pk



\$13.91

Coats Replacement Tire Changer Air Hose

Coats Replacement Tire Changer Air Hose with Euro Chuck
Part # W44RJ5

Coats® Rim Clamp® Wheel Protection Accessories

\$35.26/pkg

444-83604 (Package of 10)
183604 Quilted Clamp Sock



444-83606 (Package of 2)
183606 BL Shoe Sock

\$28.66/pkg



- Decrease the chance of damaging expensive alloy wheels by putting a "sock" over three Rim Clamp action points and eliminate metal to metal contact.
- Put your profits into the bank, not into replacing alloy wheels.
- The above socks fit all COATS Rim Clamp models.

Part # 108397

444-08397

Mount End

Special
\$1.76 ea.



Part # 108398

444-08398

Demount End
Special
\$1.76 ea.



Tire Changer Lube Bottles And Swabs



844-16572



844-16259



Ascot No.	McGee No.	Description	Price
844-16572	106572	Lube Bottle. Center-Post. Fits 4040, 4040SA and 4050	\$9.95
844-16259	106259	Lube Bottle. Rim Clamp®. Fits RC-15, RC-20, 5060, 5070, 50X and 70X Tire Changers	\$8.95
437-00491	000491	Lube Swab - 11 inch	\$1.49
437-00003	TS3	Lube Swab - 18 inch	\$3.71

COATS SWING ARM CHARGERS

9

Good!



60X_H1

STEP UP

Best!



70X_3

STEP UP

For High End Wheels!



90X_HL

- Swing Arm Design
- Air or 110v Electric Motor
- Built-in Water Separator (Air)
- 6"-24" External Clamping Range
- Metal Clamps
- Hand Actuated Bead Loosener
- Single Point Sealer
- Extended Warranty
- Patented Robo-Arm®
- Metal and Plastic Duckhead
- Can be converted to 70X

Limited Quantity

Special \$6,695.00

- Swing Arm Design
- Air or 110v Electric Motor
- Built-in Water Separator (Air)
- 6"-24" External Clamping Range
- Single Point Sealer
- Extended Warranty
- Patented Robo-Arm
- Grip Max® Plus Clamps
- Hand or Foot Actuated Bead Loosener
- Hybrid & Plastic Duckhead®
- MBD Duckhead Roller Combo
- Storage Cabinet

- Swing Arm Design
- Air or 2 Speed 110v Electric Motor
- Built-in Water Separator (Air)
- Hand Actuated Bead Loosener
- Single Point Sealer
- Extended Warranty
- Patented Robo-Arm®
- RoboRoller® (Right Side)
- Storage Cabinet
- Hybrid Leverless Duckhead®
- 6"-28" Ext. Clamping Range
- Grip Max® Plus Clamps & Extended

New COATS Tiltback Tire Changers!

An innovative tiltback design, built with the legendary reliability and durability of the Coats brand that you have come to rely on.

These rigidly built machines are capable of servicing tires from 6 to 24 inches in diameter. Built-in features increase the convenience of having all the power you need in one useful machine.

Robo-Assist - Provides direct pressure on the tire sidewall to create a bead lock and keep the bead in the drop center during the tire mounting process.

Reliable. Durable. Up for the task. Coats' version of the tiltback tire changer.



(GTS70 pictured)

Valve Core Insertion and Removal Tools



469-00005



469-00607

Ascot No.	McGee No.	Description	Price
469-00005	TL685	For both standard and large bore valves.	\$1.70
469-00607	TL620	Has plastic screwdriver handle for better grip and leverage.	\$1.99

Tire Tread Depth Gauges



454-00599



5124

Ascot No.	McGee No.	Description	Price
454-00599	595TM	Tire Tread Depth Gauge. Used to measure tire tread depth in 1/32" increments	\$2.39
	5124	Red-Yellow-Green Tread Depth Gauge: Allows your customer to visually display when tires should be replaced due to tread wear.	\$2.49

ASCOT



**AMERICAN
FORGE & FOUNDRY™**

3-1/2 Ton Professional Heavy Duty Double-Pumper Floor Jack

Model 350SS - \$285.95

This unit offers all the features of our model 350GT with additional speed and efficiency thanks to AFF's double-pumper advantage for quicker lifting.

- Lifts from 4" to 19-1/2"
- Pinned steel saddle (1-1/8" stud) with rubber pad for added vehicle protection
- Rear-mounted 2-3/4" swivel casters for ease of maneuverability
- One-piece 50-1/4" padded handle parks upright
- Ship weight 119 lbs.



Replacement Power Unit

- Before you replace your jack, consider installing a new power unit
- Quick snap out for 30262035



Replacement Power unit **350SSKHU**

10 Ton Air Lift Jack

3400A - \$695.99

This Air Lift Jack is designed for lifting and supporting trailers, large trucks, buses, farm, industrial, and construction equipment.

- 10-ton capacity achieved at 200-PSI air supply
- Heavy-duty air valve offers accurate lift control
- Removable "T" handle for easy storage
- Extension tubes offer multiple lifting and locking positions
- 12" lift travel
- Large diameter rubber tread wheels
- Low height 18"
- High height with all extensions used 52"
- Ship wt. 172lbs.



Transmission Jack 4400 lbs **3180A - \$1,295.99**

AFF has the only super heavy-duty transmission jack with a 4,400 lb. capacity. Built "forge-tough" to handle removal, transport and installation of transmissions, transfer cases or differentials on heavy-duty trucks, buses, agricultural and construction

- Fully adjustable saddle with maximum tilt for easier alignment
- Adjustable corner brackets
- Convenient side trays for small tools and parts
- Safety overload bypass system to prevent hydraulic damage
- 32" handle pivots 360° around pump
- Rugged industrial-grade 4" casters



Capacity	Low Height	High Height	Forward Tilt	Rear Tilt	Left Tilt
4400 lbs	8-1/2"	34"	15°	30°	12°
Right Tilt	Head Width	Head Length	Width	Length	Ship Weight
12°	12"-18"	16"-20"	26"	43"	374 lbs.

20 Ton Jack Stand AFF3314

\$169.95

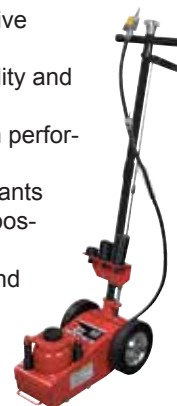
- HD pin style stand
- Efficient pin-type post with four height adjustments
- Adjusts from 12-20"
- Large 3" x 5" saddle
- Sold individually



22 TON AIR/HYD AXLE JACK W/ 3PC EXT KIT

565E \$599.95

- Heat treated cylinder wall & chromed piston give added stability & longer jack life
- Alloy steel lifting mechanism for added durability and operator safety
- Precision engineered tolerances for maximum performance
- In-line filter to protect air motor from contaminants
- Corrosion-resistant aluminum and nylon composite air motor
- Ram extension kit included with 3/4", 2-3/4" and 4" extensions
- Large 7-3/4" rear wheels for easy positioning
- Automatic in-line oiler to lubricate air motor
- Grommet retainers - no need for clevis pins



Capacity	Ram Lift	Low Height	High Height	Reach	Width	Ship Weight
22 Tons	4-3/4"	8-3/4"	21-1/2"	61"	13"	107 lbs.

20 Ton Capacity Air/Hydraulic Super Duty Bottle Jack

- AFF's most innovative and robust air/hydraulic bottle jack to date
- Redesigned air motor
- Super thick base to increase stability on every surface
- High-strength Steel Ram and cylinder with long ram guide for greater safety in off-center load conditions
- Welded Tank (threaded and screwed to the base) endures the rigors of the in-service conditions and reduces risk of tilting out of the oil reservoir

- Low: 10.375
- High: 20.625
- Lift: 6.375
- Base: 5.75 x 9
- Ship weight: 45 lbs.

5620SD.....**\$269.95**
5621SD - Low profile design**\$274.57**



Bottle Jacks

- Extension screw on some models
- Rust protection covering
- Uniweld construction
- 50% overload factor
- Fewer moving parts

ZN12 12-Ton.....**\$99.99**
ZNB22 22-Ton**\$149.99**



Truck Wheel Dolly

- Perfect for 8-10 hole Budd type wheels
- Tire/wheel is rotated left or right on tilttable roller pads for perfect stud alignment
- Removes truck wheels and tires fast and easy
- Reduces manpower needs, increasing productivity
- Saves time and money—maintenance free
- Heavy duty tubular construction lifts 280 lbs.
- 3" caster wheels roll the truck wheels for effortless removal or replacement

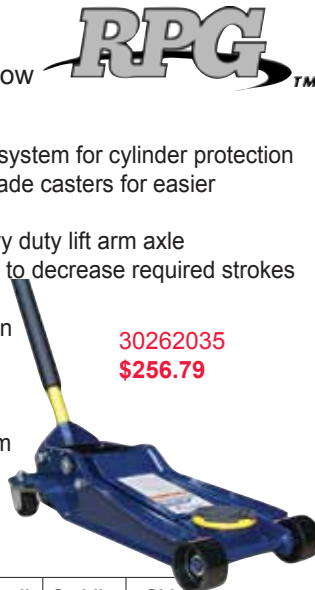


Ascot No.	McGee No.	Description	Price
407-70130	AFF3591	Truck	\$99.95

3.5-Ton Service Jack

Also available in 2-Ton (super low profile) and 2.5-Ton models

- Advanced design: Safety bypass system for cylinder protection
- Easy Transportation: Industrial grade casters for easier movement
- Heavy Duty: Reinforced and heavy duty lift arm axle
- Ease of Use: Double pump piston to decrease required strokes needed to reach chassis
- Convenient: Quick-lift pedal design makes it easy to reach the lifting point under your car
- Universal joint mechanism
- Sturdy, one-piece handle with foam cover
- Protective saddle pad to prevent damage to vehicle



30262035
\$256.79

Capacity	Min. Height	Max. Height	Handle Length	Overall Length	Saddle Diam.	Ship Weight
3.5 Ton	3.75"	21.75"	50.5"	31.125"	4.75"	107 Lbs

Accessories for 3.5 Ton Service Jacks



Coated Wheels

Ascot No	McGee No	Description
302-62351	62351	Front wheel assembly
302-62359	62359	Rear caster assembly
302-62375	6203513PU	Coated wheels and casters - set of 4
302-62357	30262357	Replacement power unit (not for Rocket Jack)

2-Ton Service Jack

- True "low-profile" design with deep reach and minimum 2.75" height for low clearance vehicles
- Universal joint mechanism
- Foam handle for vehicle protection
- Industrial grade casters for easy transport
- Safety bypass system for cylinder protection
- 24" max height for increased work space



30262021 \$225.50

3-Ton Jack Stands

- Ratchet height adjustment built within column
- Multi-level ductile iron ratchet bar adds strength and durability
- Sold in set of two



30263030 \$25.69

22-Ton Jack Stands

- Sturdy, welded steel construction for exceptional safety and strength
- Heavy gauge steel helps prevent distortion or twisting
- Multi-position column bar for convenient height adjustment
- Sold in set of two



30263220 \$165.74

3.5 Ton ROCKET LIFT Service Jack

- Single pump piston with Rocket Lift function raising saddle to the contact point in just one pump for most vehicles
- Patent pending Air- Breather for pressure balance for optimum jack performance
- Safety bypass system for cylinder protection
- Industrial grade casters for easier transportation
- Heavy duty chassis for increased strength and durability
- Bolt-on reinforced and heavy duty lift arm axle
- Universal joint mechanism
- Sturdy, one-piece handle
- Foam handle for vehicle protection
- Protective saddle pad to prevent damage to the vehicle



Super fast rise

62135 \$272.50

Capacity	Min. Height	Max. Height	Handle Length	Overall Length	Saddle Diam.	Ship Weight
3.5 Ton	3.75"	21.75"	50.5"	31.125"	4.2"	107 Lbs

20-Ton Air Bottle Jack

- Welded cylinder and reservoir for added strength and durability
- Chrome plated rams to resist rust and wear
- Built in bypass device to protect hydraulic system from over-pumping damage
- Self-returning spring for ease of operation
- Built-in muffler to promote quiet operation
- Built-in in-line air filter for extended motor life
- High speed turbo motor for efficient, effortless operation
- 1/4" quick connect feature allows for ease of mobility and remote operation



30161206 \$226.31

Ascot No.	McGee No.	Capacity	Min Height	Max Height	Handle Length	Overall Length	Overall Width	Saddle Diameter	Shipping Weight
301-61206	30161206	20 Tons	10-1/2"	20-1/2"	18-7/8"	9-1/4"	6-7/8"	1-3/4"	38.5 Lbs

20-Ton Shorty Bottle Jack

- Same stats as above
- Compare to Shinn Fu 18209



30161207 \$216.26

Ascot No.	McGee No.	Capacity	Min Height	Max Height	Handle Length	Overall Length	Overall Width	Saddle Diameter	Shipping Weight
301-61207	30161207	20 Tons	8-1/4"	15-1/2"	18-7/8"	9-1/4"	6-7/8"	1-3/4"	34 Lbs

1/2" Drive Super Duty Air Impact Wrench

- 2" extended anvil
- Handle exhaust
- Free speed: 8000 RPM
- Maximum torque: 600 ft./lbs.
- Proven design and the most popular configuration in the tire service industry
- Powered by the durable and high performing twin hammer mechanism
- Net weight: 5.6 lbs.

\$109.95

153-23120

Ascot No.	McGee No.	Description
153-23120	15323120	1/2" Drive Air Impact Wrench - 2" Extended Anvil

1" Drive Mini Air Impact Wrench

- 6" Extended Anvil
- Free speed: 5000 RPM
- Maximum torque: 2000 ft./lbs.
- Only 20 lbs – 50% less than the market leading 1" product
- Smallest and lightest 1" in the tire service industry
- Twin hammer clutch

\$445.48

155-26464

Ascot No.	McGee No.	Description
155-26464	15526464	1" Drive Mini Air Impact Wrench - 6" Extended Anvil

**Heavy Duty & High Torque!**

155-17786

(15617786 – Spline dr version - **\$468.70**)**\$389.65!**

- DURABLE: Steel end plates offering durability and extended life
- ADVANCED DESIGN: Proven motor and hammer technology; highly efficient air motor
- WORKING TORQUE RANGE: 370-1475 ft./lbs.
- 1 YEAR LIMITED WARRANTY on parts and workmanship
- COMPARE to CP77826

McGee #	Sq. Drive	Std. Bolt Size	Net Weight (lbs.)	Average Air Cons (cfm)	Air Inlet (NPTF)	Min. Hose Size	Working Torque Range ft.-lbs.	Max Torque ft.-lbs.
15517786	1"	1-1/4"	25.55	10 CFM	1/2"	1/2"	370-1475	1920

Wheel Weight Adhesive Removal Tool**A143252 - \$57.99 Replacement pad - A1432526 only - \$6.99**

- Lock-off trigger for added safety
- High torque motor to cut through stubborn wheel weight adhesive, body pinstripes, etc.
- Rubber-insulated motor housing for comfort
- High RPM to prevent pad from bogging down
- 3,700 RPM free speed

**1/2" Drive Composite Impact Wrench**

- 2" extended anvil
- Handle exhaust
- 700 ft./lbs. of torque
- Free speed: 8000 RPM
- Composite body offering lighter weight and improved balance
- Powered by the durable and high performing twin hammer mechanism
- Handle exhaust
- Net weight: 4.9 lbs.



153-12131

Ascot No.	McGee No.	Description	Price
153-12131	15312131	1/2" Drive Composite Impact Wrench 2" Extended Anvil	\$139.99

3/4" Drive Impact Wrench

- Short anvil
- 6-position power setting
- Deliver 1100 ft./lbs. of maximum torque with 5500 rpm free speed
- The most powerful 3/4" drive classic wrench
- Suitable for tire or engine work on truck, bus or farm machinery
- Comparable to the IR261



154-10261

Ascot No.	McGee No.	Description	Price
154-10261	15410261	3/4" Drive Short Shank Impact Wrench	\$395.79

Low Speed Tire Buffer with Quick Change Slip Chuck**15810873 - \$59.99**

- Brass bushings provide performance and durability in tough working conditions
- Includes whip hose and exhaust hose
- Quick change slip chuck for fast and easy change of buffing wheel
- Built in regulator
- Lock off throttle to prevent accidental start ups
- Rear exhaust directs air away from work area
- Ideal for patchwork, roughing areas for recapping and cleaning tire moldings
- Equivalent to and has same dynamics as the CP 873k
- Overhose kit also available 175-00873

**High Speed Tire Buffer Kit with Quick Change Chuck****15811871 - \$58.10****15810871 - with Jacobs - \$59.99**

- Lock-off throttle
- Free speed 22,000 RPM
- Good for the tire patchwork, roughing areas for recapping and cleaning tire moldings
- Includes overhose kit

**Kilfrost**K16 Kilfrost Pneumatic Tool Anti-Freeze Lubricant, 16 Oz. bottle - 18184581 - **\$15.55**

- Prevents the freezing of pneumatic equipment caused by the formation of ice in and around exhaust ports and valves. Kilfrost absorbs the water in the airline. Is a semi-synthetic lubricant which has none of the drawbacks associated with normal oils.

*Winter is here!*



153-02312

231XP2 \$149.95
**1/2" Super Duty Extended Anvil
Air Impact Wrench**

This new model redefines the standards set by the classic IR231 model, with an enhanced Twin Hammer impact mechanism for more power and in-handle exhaust to direct air away from the operator and the work area.



Ascot No.	McGee No.	Description	Price
153-00231	IR231	Air Wrench 1/2" Dr Short Anvil	\$154.16
	2235TIMAX2	Air Wrench 1/2" Long Anvil Titanium	\$329.63
	2235QTIMAX2	1/2" Dr Quiet Air Wrench Long Anvil	\$335.89
	2235TIMAX	Air Wrench 1/2" Dr Short Anvil Titanium	\$322.73

3/4" Maximum Power Impact Air Wrench

- 3/4" Maximum Power Impact Air Wrench
- 1350 ft./lbs. maximum reverse torque from a tool that weighs just 7.4 lbs. and is compact enough to access tight spaces
- Built to last and designed to withstand tough use in rugged environments
- An air motor that's 16% more efficient than its predecessor and an easy-to-clean inlet screen means less down time, better tool performance, and less money spent on compressed air
- Torque Range: 200-900 ft./lbs.



Ascot No.	McGee No.	Description	Price
154-12145	2145QiMAX	Standard Anvil	\$519.95
154-22145	2145QiMAX3	3" Extended Anvil	\$569.95
154-32145	2145QiMax6	6" Extended Anvil	\$599.95
154-00261	IR261	HD 3/4" SD Wrench 1100 Ft/Lb Torq	\$480.87
154-02616	2616	3/4" Super Duty Air Impact w/6" Ext. Anvil	\$545.32

**Video on proper air
tool maintenance;
make your tools last!**


<http://vimeo.com/212944966/>

1" Heavy Duty Air Impact Wrench

Perfect for the demanding world of truck tire and service work

- Combines exceptional power, durability and operator convenience
- Delivers 1450 ft./lbs. of maximum torque, with a 5000 RPM free speed and four-position power regulator 360° swivel inlet
- Available in 6" extended anvil and 6" extended #5 spline drive anvil for high production truck tire changing



155-02856

Ascot No.	McGee. No.	Description	Price
155-28560	IR285B	Standard Anvil	\$499.95
155-02856	IR285B6	6" Extended Anvil	\$416.25
156-28566	IR285BS6	#5 Spline Super Duty Anvil	\$559.95



**Buy any 3 CP tools on one invoice* and get
FREE CP torque wrench (1/2", 3/8" or 1/4")****

1/2" Cordless HD Impact Wrench

FEATURES

- Max torque 775 Ft/lbs
- 2 20V Li batteries, charger, blow molded case
- Runs at full power until battery depletion
- Great warranty!
 - Tool for 5 years
 - Batteries for 3 years
 - 1 Year No Hassle Replacement
- Assembled in the EU


CP88482K - \$379.85

1/2" CP7748 - Extreme torque & durability

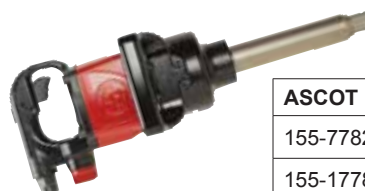
FEATURES

- Most powerful 1/2" air wrench in its class
- Twin hammer grease clutch
- Ergonomic rubber handle
- Reinforced nose wings and back housing cap for longer durability
- Max Torque 1200 ft. lbs.
- 922 ft. lbs. Working Torque


CP77482 - \$172.95

CP7762 (8941077620) Stubby 3/4" Impact Wrench

- ULTRA Compact- 6.2 in length for restricted working areas
- Lightweight- 6.6 lbs. / 3.0 kg for less operator fatigue
- Powerful- 1050 ft.lbs max torque in reverse for high productivity (1550 Nut Removal Torque)
- Side2Side forward and reverse system
- Full teasing trigger
- One hand Forward & Reverse speed regulator button


**CP77482
\$233.99**

155-77826
1" Heavy Duty Air
Impact Wrench

ASCOT NO.	McGEE NO.	PRICE
155-77826	CP77826	\$425.00
155-17782	CP7782SP6	\$574.67

A CP77826 with CP873K buffer available while supplies last!

1" Heavy Duty Air Impact Wrench

2140 ft.lbs 2900 Nm of maximum torque in reverse

- Pinless closed reinforced rocking dog impact mechanism
- Socket retainer ring combined with hole retainer
- Ergonomic side handle
- Full teasing trigger
- Regulator with integrated forward/reverse with 3-position power settings in both directions

AutoSock ***the alternative to chains***

- ⊕ Less weight than chains
- ⊕ No damage to vehicle
- ⊕ No climbing under vehicles to grab broken chains
- ⊕ Great for low wheel clearance vehicles



www.autosock.us • Approved across the U.S.

*Showroom displays for the
floor or counter available!*



Call Today! 1-800-525-8888

***Available for
trucks and cars!***



**Contact us anytime for a 10
minute demonstration!**



AutoSock
...brings you home!

Offered by McGee Company

How does AutoSock® work?

Basically, it is all about friction. Dry snow and ice sticks to fabric, especially 'woolly' fabric as those of us who remember snowballing in woolen mittens will remember. AutoSock is made from a hairy fabric which sticks to the snow. The fibers, which become hairier with use, are arranged at right angles to the direction of travel to optimize grip. Very importantly, the specially developed textile also 'wicks away' any water that's found between the ground and the tire (generated e.g. by the warmth of the sun or wheel spin) thereby maximizing the friction grip.

How well do they work?

Astonishingly well! They are more effective than winter tires (and a lot cheaper) and are also more effective than snow chains in certain situations, especially on ice. They have been tested and formally approved in Europe by Audi, Citroen, Mercedes-Benz, Peugeot, Volkswagen, and BMW and in Japan by Toyota, Honda, and Volvo truck of Sweden. They are also approved by several European road transport research institutes and the German TUV. In the US, Colorado DOT was the first state with chain laws to approve the use of AutoSock. A range of test data is available at www.autosock.us.

What sort of conditions can I use them in?

They'll improve traction on any snow or ice even in soft, deep snow or in wet snow. It's recommended that you take them off when you get back to clear roads, although the reality is that they probably will be drive on dry pavement during those intermittent

dry/snow/dry/snow conditions experienced before leaving the snow for good. For CDOT approval, the AutoSock had to run at 20 MPH on dry pavement for 100 miles and still be deemed a useable traction device. AutoSock passed with flying colors, however, dry pavement driving is not recommended as it increases wear.

What's it like driving with AutoSock?

Silent and smooth as you'd expect. There's none of the loud rattling and bumpy ride associated with snow chains. Because there's no danger of damage to the vehicle structure, they are approved for speeds up to 30 mph in passenger vehicles and 20 mph in commercial: this is faster than is recommended for snow chains, although your speed should of course be appropriate to the weather and road conditions.

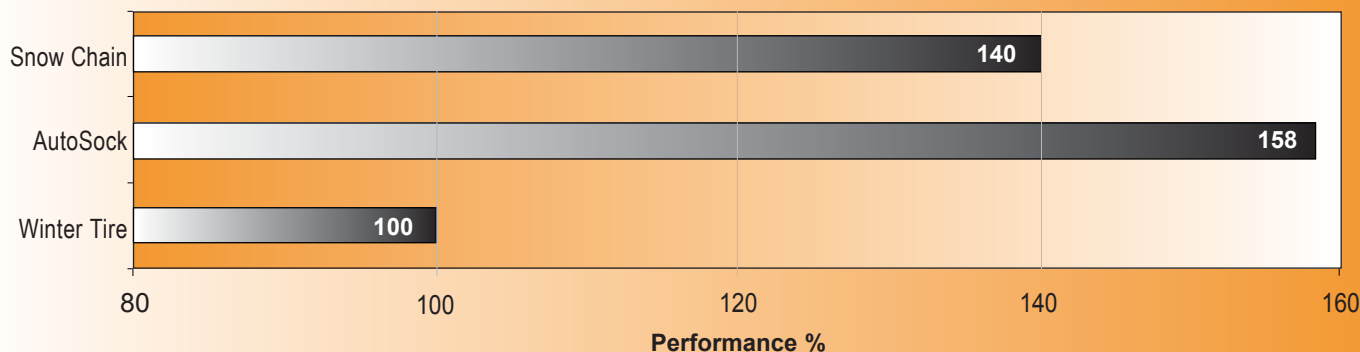
Is there anything else I should know about?

Nothing to be concerned about, although certain users may wish to note that you can use them with your vehicle's electronic aids left on unlike snow chains which should NOT be use with traction control/antiskid like ESP/ASC+T/ASR/ABS.

If my car has limited space between the wheel and the mechanical parts, can I use AutoSock?

Yes, AutoSock works even with vehicles which have low clearance between the tire and the body in addition to tight space between the tire and the suspension.

AutoSock for Passenger Cars - Max. Traction Force on Snow



DATE: Dec 06 2007

AIR TEMP.: -7°C/25°F

TIRE SIZE: 205/55 R16

INFLATION FA: 3.0 bar

TEST VEHICLE: Pontiac FWD

LOCATION: Loveland Pass

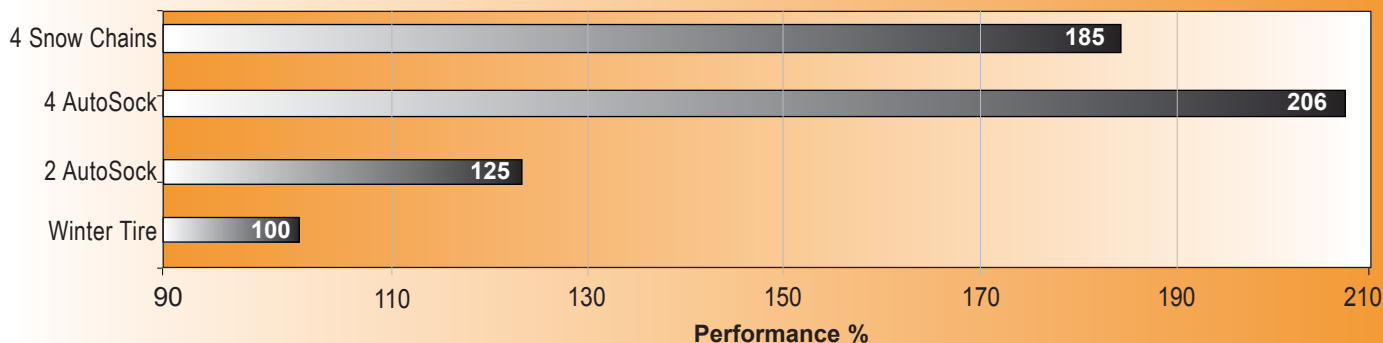
CONDIT.: Dry snow, cloudy

ABS: on

INFLATION RA: 3.0 bar

TEST SURFACE: Packed Snow

AutoSock for Truck - Max. Traction Force on Snow



DATE: Dec 06 2007

AIR TEMP.: -7°C/25°F

TIRE SIZE: 295/70 R22.5

INFLATION FA: 8.0 bar

TEST VEHICLE: Peterbilt

LOCATION: Loveland Pass

CONDIT.: Dry snow, cloudy

ABS: on

INFLATION RA: 8.0 bar

TEST SURFACE: Packed Snow

Stud Gun, Studding Equipment



458-00010



458-00500

ASCOT NO.	MFG. NO.	DESCRIPTION
458-00010	10G	Stud Gun. Standard of the Industry. Automatic. Light weight.
458-00002	KFP2	Stud Feeder. Fully automatic with 110 Volt motor, fast loading. Provides positive stud orientation. Feeds up to 225 studs per minute.
458-04048	4048	Feederboy Stud Gun. Designed for fast feeding studs of the AS-9 Gun. Attaches with screw clamp. Operates by manually turning the feeder cap.
458-00005	K5	Stud Feeder. INCLUDES: Shield for gun. Welded steel construction with saddle.
458-00500	K500	Studding Equipment Kit. INCLUDES: K-5 stand, AS-9 gun, KFP2 automatic stud feeder.

Ugigrip®, Self-Adjusting Carbide Tire Stud

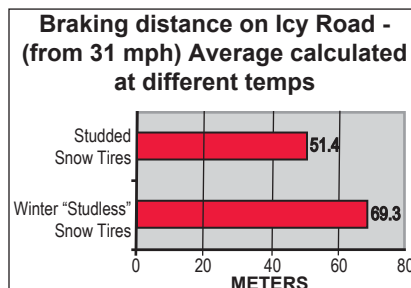
- Delivers full-time traction, increases the safety, convenience and security.
- To order studs to best fit your customers' tire, use the TSMI number recommended by the tire manufacturer



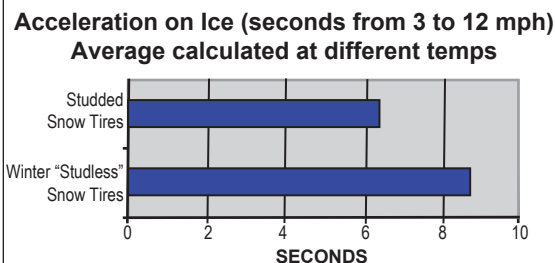
SINGLE FLANGE STUDS:

TSMI Size	11	12	13	15	16	17	19
Overall Length	.345"	.375"	.470"	.520"	.585"	.515"	.635"
Jacket Dia.	.197"	.197"	.197"	.197"	.197"	.197"	.250"
Bottom Dia	.354"	.354"	.354"	.354"	.354"	.354"	.354"
Nearest 32" to Hole Depth	11/32"	12/32"	13/32"	15/32"	16/32"	17/32"	19/32"

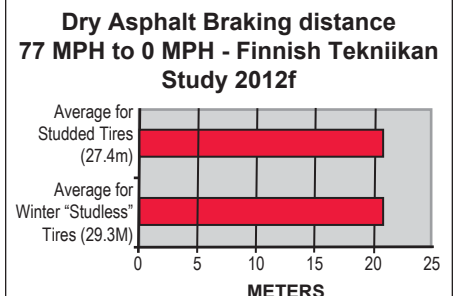
Why studded tires are the best choice for winter driving!



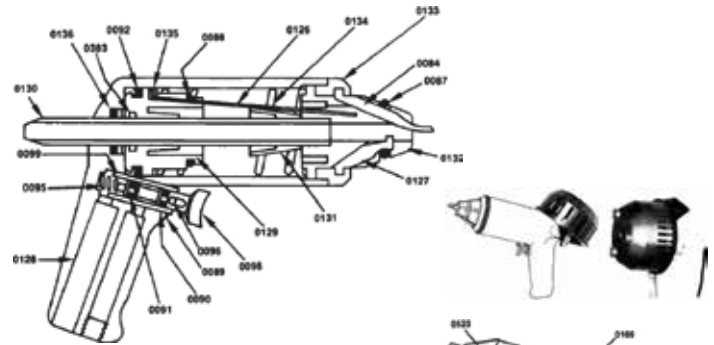
35% BETTER THAN 'STUDLESS' WINTER TIRES



STUDDED TIRES 36% BETTER THAN WINTER "STUDLESS" SNOW TIRES



Parts Breakdown



STUD GUN PARTS (AS-9 MODEL)

Part No.	Description
0084	External Finger
0087	O-Ring
0088	O-Ring
0089	O-Ring
0090	O-Ring
0091	O-Ring
0092	Piston Cup
0095	Trigger Spring
0096	Trigger Pin
0098	Trigger
0099	Trigger Sleeve
0126	Pressing Spring
0127	Internal Finger
0128	Handle Body
0129	Piston
0130	Feed Tube
0131	Tapered Sleeve
0132	Head (Steel)
0133	Ring Nut
0134	Compression Spring
0135	Ring
0136	O-Ring
0383	Piston Cup

STUD FEEDER PARTS (KFP2 MODEL)

Part No.	Description
0169	Deflector Spring
0172	Snap Ring
0173	Screw
0174	Washer
0175	Clamp
0180	Drive Shaft Pin
0428	Washer
0519	Feed Wheel
0520	Base Plate
0521	Retaining Ring
0522	Feed Tube
0523	Screw
0524	Shaft
0525	Hex Bolt

Stud Gun Repair & Conversion Kits

ASCOT NO.	STUDDING GUN	USE WITH STUDS NUMBERED
458-03810	0381	Tire Stud Mini Repair Kit. INCLUDES: (3) 0084 External Fingers; (1) 0087 O-ring; (1) 0088 O-ring; (3) 0126 Pressing Springs
458-03820	0382	Tire Stud Gun Large Repair Kit. INCLUDES: (6) 0126 Pressing Springs; (3) 0084 External Fingers; (2) 0087 O-ring; (2) 0088 O-ring; (1) 0092 Piston Cup; (1) 0136 O-ring

Garage Exhaust Hoses & Vehicle Protection

Tailpipe Adapters



- Crushproof offers a complete line of accessory items
- Parts depicted below are the result of years of accumulated customer input, Crushproof's technology and extensive field testing

Ascot No.	Mfg. No.	Adapter Description	Tailpipe Style	Tailpipe Size	Hose I.D.	Price
391-93000	TPA3000	Split Adapter	Separated	Up To	3"	
					2-1/2"	\$75.42
391-90250	F250	Straight w/ Hook & Chain	Single	Up To 2"	2-1/2", 3", 3-1/2"	\$17.72
391-90300	F300	Straight w/ Hook & Chain	Single	Up To 2-1/2"	2-1/2", 3", 3-1/2"	\$23.99
391-90400	F400	Straight w/ Hook & Chain	Single	Up To 3-1/2"	3-1/2", 4", 5"	\$48.44
391-91250	RA250	Bell w/ Snaps	All	All	3"	\$29.05
391-91300	RA300	Bell w/ Snaps	All	All	3"	\$29.05

Crushproof Exhaust Ventilation System

Door Ports


ADF30
ADF40


DF25

Y-Connectors



AY40


RY25
RY30

Ascot No.	Mfg. No.	Description	Price
391-00125	DF25	2-1/2" Rubber Door Port	\$23.52
391-00130	ADF30	3" Aluminum Door Port	\$31.58
391-00140	ADF40	4" Aluminum Door Port	\$42.41
391-00225	RY25	2-1/2" Rubber Y-Connector	\$25.56
391-00230	RY30	3" Rubber Y-Connector	\$26.85
391-00240	AY40	4" Aluminum Y-Connector	\$68.86

Flarelock Exhaust Hose!

Flared end permits connecting hoses!



FLT250 - 11 ft x 2.5 in. **\$80.00**
 FLT300 - 11 ft x 3 in. **\$96.00**
 FLT400 - 11 ft x 4 in. **\$155.10**

Call 1-800-525-8888

Additional Items Available

Tire Bags, Seat Protectors, Steering Wheel Covers, Paper Floor Mats, Parts Bags

Dispensing Racks

Centralize your cleanliness products for the professional image your business needs and the convenience your employees deserve. The top tray holds paper floor mats and elastic band steering wheel covers. Rollers are for seat covers, tire bags, and parts bags.

Order No.	Description	Ship Wt. Lbs.	Price
PSC	Seat Protectors - Roll of 500	20	\$71.45
SWC	Car Steering Wheel Covers - 500 pkg	10	\$53.51
STB	Standard Tire Bag - Roll of 250	25	\$64.91
HDTB	Large Tire Bag for SUV - Roll of 250	30	\$86.00
FPFM	Heavy Duty Paper Floor Mat - Box of 500	50	\$40.27
WPB	Parts Bags, 12" x 20" - Roll of 500	15	\$38.18
DR	Dispenser Stand Only	25	\$180.00
41110	Large Tire Bag - Roll of 100	13	\$35.45



#WPB



#PSC



#SWC



#STB & #HTB & 41-110



#FPFM

Largest stock of tire chains in the Rocky Mountain Area!

Laclede™ Tire Chains

TIRE SIZES				Stock Number
Single mount			Dual Mount	
8.25-15LT	P265/75R16	255/60R17	245/70R17.5	3210R
10-15LT	245/85R16LT	P255/70R17	P255/70R18	
265/70R15LT	265/70R16LT	P265/65R17	275/55R18	
265/75R15LT	265/75R16LT	P265/70R17	225/70R19.5	
305/50R15	265/80R16LT	265/70R17LT	P265/65R18	
31X10.50-15LT	275/70R16LT	275/65R17	255/70R18	
33X10.50-15	295/50R16LT	235/75R17.5		
P265/70R16	245/75R17LT			
PR78-15	PR78-16	34X9-16	285/65R18LT	3227R
11-15LT	12-16.5LT	31X10.50-16.5LT	285/45R19	
31X11.50-15LT	P285/60R16	285/60R17	275/60R20	
32X11.50-15LT	275/65R16LT	285/70R17	P285/50R20	
33X9.50-15LT	285/60R16LT	305/45R17		
33X13.50-15	32X11.50-16LT	P265/60R18		
34X9.50-15LT	33X13.50-16	285/60R18		
285/75R16LT	265/70R18	275/70R18LT		3228R
31X12.50-16	275/65R18	P275/60R18		
12-15LT	11L16	33X15.5-16.5	275/65R20LT	3229R
P315/70R15	285/70R16LT	275/70R17	305/50R20	
325/60R15	295/75R16LT	285/75R17LT	305/55R20	
31X13.5-15	305/70R16LT	295/70R17LT	285/50R22	
32X12.50-15	305/85R16LT	305/70R17	33X11.5-22	
33X12.50R15	35X12.5-16	33X12.50-17	285/55R20LT	
33X14-15	35X13.5-16	10.50/80R18	32X11.50-20	
33X14.50-15	36X13-16	285/75R18LT	275/70R18	
35X12.50-15	32X12.50-16.5LT	325/60R18	295/70R18	
35X14.5-15	33X12.5-16.5	33X13-18		
QR78-15	38X13-16	345/55R17	325/65R18	3231R
35X13.5-15	35X12.50-16.5	35X12.50-17	35X12.50-20	
37X13-15	38X12.50-16.5	37X12.50-17	325/50R22LT	
345/55R16LT	315/70R17LT	305/60R18	35X12.5-22	
37X12.50-16	325/70R17	305/70R18LT		
35X14-15	35X14-16	37X12.5-16.5	37X13.5-17	3235R
36X12.50-15	36X12.5-16.5	38X15.5-16.5	14-17.5	
37X13.50-15	36X14-16.5	355/70R17LT	285/70R19.5	
37x14.50-15	38x14.50-16	40X17-16.5	37x13.50-22	3251R
39.5X15-15	325/80R16	355/65R18		
40X17-15	39.5X15-16.5	37x13.50-20		
355/80R20	13-22.5	15-22.5	385/65R22.5	3255R
42X15-16.5	38X13.5-20	335/80R-18		3259R
355/60R20				3261R
18-22.5	445/65R22.5			
38.5X16-15	39.5X15-16	39.5X18-16.5	15-19.5	3265R
39.5X18-15	38.5X16-16	38X15.5-18	38X15.50-20	
445/50R22.5	455/55R22.5			3269R
445/65R19.5	16.5-22.5	425/65R22.5		3271R



Wide Base Truck Cam Chains

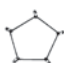


Dual Truck Chains



DUO Tractor Chains


Tire Sizes					Stock No.
9.5-24	9.5-28	11.2-24			DUO214
9.5-32	11.2-28	230/95R32	355/80R20		DUO226
10.5/80-18	12-16.5	280/70R20	300/70R20	315/75D15	DUO225
12.4-24					DUO229
9.5-36	9.5-38	11.2-32	12.4-28		DUO218
13.9-36	320/85R34				DUO242
13.6-24	13.6-26	14.9-24			DUO240
14.9-26					DUO250
14.9-28	14.9-30				DUO252
13.6-28	16.9-24	320/85R38	340/85R28	380/85R34	DUO260
14.9-38	15.5-38	320/90R46			DUO254
17.5-24	17.5L-24				DUO263
16.9-26	16.9-28	420/85R28			DUO262
16.9-32					DUO266
16.9-34	230/95R44				DUO270
18.4-16.1	21.5L-16.1				DUO264
18.4-24	19.5L-24				DUO268
16.9-30	18.4-26	18.4-28	18.4-30	540/65R30	DUO271
550/65R25	600/65R28				
18.4-34	480/85R34	600/65R25			DUO273
16.9-38	18.4-38	20.8-34	380/90R50	420/80R46	DUO272
460/85R34	480/80R38				
18.4-42	18.4-46	380/90R54	480/80R46		DUO277
20.8-38					DUO276
24.5-32	23.1-34	28.1-34	620/70R42	650/75R32	DUO282


Passenger Car
No. 29110
Trucks Nos 29925
& 29229


Truck
No. 6032


Grader
No. 6304


Truck
No. 0218


Passenger Car
No. 39110
Trucks Nos 39925
& 39229

Tire Chain Adjusters

Ascot No.	Mfg. No.	Description	Qty.
458-29110	29110	Passenger Car - Rubber	2 per bag
458-29225	29225	Light Truck - Rubber	2 per bag
458-29229	29229	Heavy Truck - Rubber	2 per bag
	0218	Spider Truck	2 per bag
458-06302	6302	Light Truck - Spring	1 pair per container
458-06304	6304	Tractor/Grader - Spring	1 pair per container
	39110	Passenger Car - Rubber Arm Blue	2 per bag
	39225	Light Truck - Rubber Arm Grey	2 per bag
	39229	Heavy Truck - Rubber Arm Green	2 per bag

LG Cam Series Available



Tire Sizes	Tire Chain Stock No.		
13.00-24/25	14.00-20/21	15.5-25	2612
14.00-24	14.00-25		2615
16.00-20/21	17.5-25		2624
16.00-24	16.00-25		2627
20.5-25			2633
18.00-25	18.00-24	18.00-26	2636
			2642
23.5-25			2645
26.5-25	755/70R25	30.5R32	2657
710/70R38		800/65R32	

Laclede Single Truck Chains

- Recommended for highway use
- Available in R—regular side chain
- Available with cam side chain



Tire Sizes				Non-Cam Stock No.
7.00-14LT	P205/75R14	205/60R17.5		
185-14	195/75R14LT	28X8.50-14		2209R
H70-14ST		LR78-15	7.00-15LT	195/75R15LT
H78-14ST	H78-15ST	6.70-15LT	P215/75R15	7-17.5LT
9-14.5MH	P235/75R15	8.00-16.5	225/75R16LT	235/65R17
215/75R14LT	215/75R15LT	P225/70R16	255/75R16LT	
H78-15LT	30x9.50-15	P225/75R16	P235/60R17	
P225/75R15	6.50-16LT	205R16	P235/65R17	
7.00-15TR	245/75R15LT	235/75R16LT	8-17.5	225/65R18
7.50-15LT	7.00-16LT	245/70R16LT	8.50-17.5	235/60R18
P275/60R15	8.75-16.5	255/65R16LT	215/70R17.5	235/65R18
235/75R15LT	215/80R16LT	8.75-16LT	P235/50R18	245/55R19
245/70R15LT	215/85R16LT	P235/70R17	P255/45R18	
NR78-15	LR78-16	235/85R16LT	7.5-17	
7.50-15TR	7.50-16LT	7.00-17LT		2221R
275/60R15LT	9.50-16.5	215/75R17.5		
7.50-17	245/70R17LT	225/70R17.5	7.00-18	8-19.5 7.00-18 8-19.5
P245/65R15	P245/75R16	265/60R16LT	P245/55R17	275/60R17
P245/70R15	P255/65R16	275/60R16LT	P245/65R17	P255/55R18
P255/70R15	P255/70R16	30X9.50-16LT	245/65R17	255/55R18
P265/70R15	P275/60R16	31X11.50-16	P245/70R17	255/60R18
P265/75R15	235/70R16LT	32X9-16LT	P255/55R17	235/55R19
255/75R15LT	235/80R16	32X10.00-16LT	P255/60R17	
29X9.50-15	245/75R16LT	10-16.5LT	P255/65R17	
P235/70R16	255/70R16LT	225/75R17LT	P275/60R17	
P245/70R16	265/50R16LT	P235/75R17		
8.25-15TR	255/85R16LT	245/70R19.5	P275/60R20	275/55R20LT
P275/70R16		275/55R20	245/70 19.5	
7.50-18	265/70R19.5	6.50-20	7.00-20	7.00-20 6.50-20
9.00-15TR	9R17.5		8-22.5	255/70R22.5
9.00-16LT	10R17.5	7.50-20	235/80R22.5	
10-15TR	8.25-20	245/75R22.5	275/70R22.5	
11R17.5	9-22.5		QR78-16	
9.00-20	10-22.5	255/80R22.5	265/75R22.5	
10.00-20	11-22.5	275/80R22.5		
295/75R22.5	305/70R22.5	285/75R24.5	275/80R24.5	
10.00-22	11-24.5			
11.00-15TR	11.00-20	12-22.5	12.5-22.5	295/80R22.5
12.00-20	13/80R20	11.00-22	315/80R22.5	12-24.5
13.00-20	14/80R20	365/80R20	12.00-24	

Laclede Snow Blower & Garden Tractor Chains



Tire Sizes		Stock No.
4.00/4.80 x 8		1301G
16 x 6.50 x 8	15 x 6.00 x 6	3300G
18 x 8.50 x 8		3307G
20 x 10 x 8	20 x 10 x 10	7145G
20 x 8.00 x 10	20 x 8 x 8	1308G
23 x 9.50 x 12	23 x 10.50 x 12	5307G

Other sizes available - call for details.

Laclede Forklift Chains

- Square link alloy cross chains



Tire Sizes				Stock No.
6.50-10				2108FL
7.50-10	7.00-12	25 x 8.50-14		2110FL
7.00 x 15	28 x 9-15	29 x 8-15	8.15-15	2116FL
27 x 8.50-15	28 x 9.50-15			
7.50-15				2121FL
250-15	27 x 10.50-15			2129FL
8.25-15				2128FL
300-15	28 x 12.50-15			3129FL



Laclede ATV/UTV Chains

- Reinforced cross chain for increased wear and traction
- Two link spacing cross chain

Tire Sizes					Stock No.
24 x 9 x 11	24 x 11 x 11	25 x 10 x 11	25 x 11 x 12	26 x 10 x 12	618
24 x 11 x 9	24 x 11 x 12	25 x 10 x 12	26 x 9 x 12	26 x 10 x 14	
24 x 11 x 10	25 x 8 x 12	25 x 11 x 9	26 x 9 x 14		

Call for details on other sizes.



McGEE COMPANY



Denver (HDQTR)
1140 South Jason St.
Denver, CO 80223

(800) 525-8888

(303) 777-2615
FAX (303) 777-7140

Salt Lake City
1101 S. 700 West
Salt Lake City, UT 84104

(800) 525-8888

(801) 487-8751
FAX (801) 487-8753

Albuquerque
4412 Prospect NE
Albuquerque, NM 87110

(800) 525-8888

(505) 883-9613
FAX (505) 883-1382

Dallas
8504 Chancellor Row
Dallas, TX 75427

(800) 525-8888

(214) 689-0400
FAX (214) 689-0448

EZ-sensor™

Programmable Tire Pressure Monitoring Sensor

#46133500

\$37.95#VS950 Rubber Stem **\$1.86**#4693400 Alum Stem **\$4.71**

One Sensor To Rule Them All Program for TPMS:

- ▶ Combined 315 MHz & 433 MHz
- ▶ Reduce overall cost of service
- ▶ Snap-in or Clamp-in
- ▶ Optimize inventory
- ▶ Bulk 10 Pack 461-33501 **\$349.95**

**33700 High Speed****EZ \$39.99**

TPMS Profit Center

Remember, replacing the TPMS valve stem (snap-in rubber or clamp-in aluminum) or the TPMS service kit with each tire sale is done for the same reasons a traditional TR-413 snap-in is replaced with each new tire.

More information at mcgeecompany.com/stems

- McGee's top 7 stems
 - * 8 - VS70
 - * 4 - 1096k
 - * 4 - VS90
 - * 8 - VS65
 - * 8 - 9066K
 - * 20 - VS950
 - * 4 - VS20
- Color coded for easy selection
- 52 stems
- Extra dividers to fit your needs
- Heavy duty protective organizing case



**TPC
\$169.99**



How much money are you leaving on the table by not doing TPMS?

	Valve Stem Shop Revenue	TPMS Sensor Rebuild Shop Revenue
Assumptions	100 Tires a Week	100 Tires a Week
Cost from WD	\$ 0.12	\$ 3.00
Sell price to customer	\$ 2.75	\$ 9.99
Profit per tire	\$ 2.63	\$ 6.99
Weekly profit	\$ 263.00	\$ 699.00
Annual profit (52 weeks)	\$ 13,676.00	\$ 36,348.00

A shop doing **TPMS** makes nearly **three** times the amount doing TPMS versus valves alone in addition to pushing their customers to a competitor. **Be TPMS smart**; let McGee Company train you and set you up with the tools to be successful.



7001-HPR
No screw required!

← Snaps in.

Redi sensors
No programming necessary

REDI-Sensor™

WORKS WITH EXISTING
MAJOR TPMS SCAN TOOLS:

If a shop has the tools to handle OE sensors, it's ready for REDI-Sensor. Unlike other sensors that require the purchase of specialized tools and software upgrades, no additional purchases, training or investments are needed with REDI-Sensor.

It works with all major TPMS scan tools, including ATEQ, Bartec, OTC and T.I.P.S. With REDI-Sensor, technicians can use the OE scan tool procedures for TPMS service – no new service routines are required.



Copy-cat and reused TPMS parts are a ticking time bomb!



Reusing seals or using inferior seals = slow leaks



Reusing hex nuts or using inferior nuts = corrosion and a damaged sensor!



Unplated Valve Core, Corroded in Stem (valve core will not actuate)

Must replace grommet



TPMS Valve Caps



630A



635

SH20055



SH20495



Ascot No.	McGee No.	Description	Price
468-20495	SH20495	TPMS Alum Valve Cap Bx/100	\$26.27
468-20055	SH20055	TPMS Electroless Valve Core Nickel Plated	\$11.95
468-00635	635	TPMS Black Plastic Cap Long Skirt Bx/100	\$20.00
	630A	TPMS Black Plastic Cap Short Skirt Bx/100	\$9.99

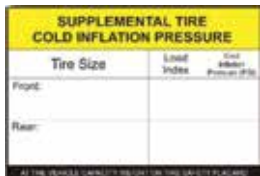
Proper TPMS Diagnostics Starts Here

TPMS Tools



Part Number	Description
WRTPAD1	TPMS Programming Accessory Device [PAD]
WRT300PROC	Tech300PRO activation TPMS tool with OBDII module and OBDII cable [Tech300PROC]
WRT400PRO	Tech400PRO TPMS tool with Bluetooth
WRTMT104	Mechanical Tool Kit

Pro Series and TECH500 Accessories



Part Number	Description
WRTPROWMCC	Wall Mounted Charging Cradle & Bluetooth Printer Combination for the Pro Series and Tech500
WRTPROQIPAD	Inductive Charging Pad w/Power Supply
WRT0BD002	Mitsubishi Adaptor (not required for the Tech 500 or Pro Series)
WRTRST50	Loop Reset Tool for Toyota (not required for the Tech400SD, Tech500, or the Pro Series)
WRTPLACARD25	Placard Labels (25 per roll); "Supplemental Tire Cold Inflation" label
WRTPLACARD100	Placard Labels (100 per roll); "Supplemental Tire Cold Inflation" label



Sensor and 300PROC Bundle

Part #21286 - \$999.99

Buy 24 EZ Sensors and get the 300Proc nearly free!

Comes with:

- 2 years of free software updates
- 5 years of free software updates if trading in a competitive tool
- EZ sensors cover both 315 & 433 MHz
- Only programs EZ sensors



TECH 300 PROC

Features:

- Wireless Bluetooth data transfer
- Inductive charging capable
- Programs aftermarket sensors
- Works with multi-protocol sensors
- TIA inside technology
- Included OBD connectivity
- Also available in an Activation Only Entry Level Tool

Offer good through December 31, 2017



Benefits:

- Functions seamlessly with your OE or aftermarket scan tool
- Greater vehicle coverage means saying YES more often
- Ease of use means anyone in your business can use the tool
- Comprehensive health report makes discussing TPMS with your customer effective and easy

TECH 400 PRO

Features:

- Advanced TPMS technology
- Comprehensive OBD relearn coverage for import and domestic vehicles
- TPMS placard adjusting
- Programs aftermarket sensors
- Wi-Fi enabled
- Bluetooth enabled
- Bonus OBD coverage (Ford, GM, Chrysler Volvo)
- Exclusive passive key testing
- 2 year extended warranty



Benefits:

- Greater flexibility means more choices in sensor solutions and the ability to fix more cars
- The best in vehicle coverage means fixing more cars
- Wireless updates makes keeping your tool current easy
- Comprehensive health report makes discussing TPMS with your customer effective and easy

#KT171997

11mm and 12mm nut tool used to quickly remove TPMS nuts and to reseal grommets



Core Tools



46900044

Ascot No.	McGee No.	Description	Price
469-00612	TL612	Standard Core Tool 8"	\$4.70
469-00021	TL615	Standard Deflator Core Remover	\$0.99
469-00607	TL620	Core Tool Screwdriver Handle	\$1.99
469-00005	TL685	Standard and L/B Core Tool	\$1.70
469-00002	4205	4 Way Tool Steel	\$4.95
469-00044	46900044	Core Torque Tool	\$3.43
469-00081	46900081	4 Way Tool	\$16.34

Preset to prevent over-torque - 469000044

Avoid flat tires! New tires mounted on TPMS equipped vehicles require TPMS replacement kits.

TPMS Accessory Kits — Dill or Schrader - OE Approved

Ascot No.	McGee No.	Schrader Version	Description	Price
469-01030	1030K	SH20017AK	Siemens Kit for VW (Fits 1053 Sensor) (Orange)	\$2.99
469-01050	1050K	SH20013AK/ SH20030AK	Siemens Kit for Chrysler (White) SH20013AK includes bottom ball	\$2.79
469-01060	1060K	20001/20002/ 20135AK/20096AK	Fits Schrader SH20096 (Red)	\$1.75
469-01070	1070K	20004/20116AK/ 20115AK/20107AK	Fits Dill 9076, 9107, 9115, 9116 (Blue)	\$1.75
469-01080	1080K	20003/20007/ 20117AK/20028AK	Fits Dill 9028, 9034, 9064, 9081, 9117, 9161 (Green)	\$1.75
469-01090	1090K	—	Compatible with Beru Sensors (Grey)	\$3.60
469-20036	SH20036AK	—	Entire Valve (Schrader 20036) for Hyundai, Kia, Honda (Dill 1096)	\$7.86
469-01100	1100K	SH20032AK	Compatible with Pacific Sensors for Toyota/Lexus (Purple)	\$2.95
469-01110	1110K	SH20006AK	Compatible with Pacific Sensors for Toyota (Teal)	\$2.95
469-01130	1130K	SH20030AK	Compatible with Schrader 20005 (Burgandy)	\$2.65
469-20025	2000K	—	TRW Kit	\$2.85
469-20010	2010K	SH20015AK	Compatible with Schrader Sensors for Volvo (non-stock) (Lt. Brown)	\$1.64
469-20020	2020K	SH20030AK	Early 2007 GM Kit for Entire Sensors (Pink)	\$1.92
469-20030	2030K	SH20016AK	Dill Sensors 9154, 9204, 9214	\$1.92
469-02040	2040K	SH20019AK	Kit for Honda Civic (Lt. Blue)	\$2.08
469-09250	VS925A	—	Aluminum Metal Replacement Valve for GM Snap-In	\$3.63
469-09251	VS925C	—	Chrome Metal Replacement Valve for GM and Ford Snap-In	\$3.74
469-00950	VS950	SH20018	Rubber Snap-In Replacement Valve for GM & Ford fits Schrader 46133500 (ea)	\$1.86
469-09305	VS950SC	—	Chrome Replacement Valve for GM and Ford Snap-In	\$2.31
469-20020	—	SH20020	Replacement Stem Chrysler, Uses Kit 1050K	\$2.41
469-90660	9066K	—	Complete Replacement Stem Chrysler with Kit (9066B-Ball joint only)	\$3.14
469-07020	7020K	—	Accessory Kit for Redi Sensor	\$3.68
469-00770	VS70	—	Available on the following vehicle in various forms: Years 2010 to 2014 (Acura, Cadillac, Chrysler, Dodge, Honda, Hyundai, KIA, Mazda, Nissan) the sensor most associated with the VS-70 is 7001/HP or 7002.	\$4.57
469-00080	VS80	—	Replacement Rubber Stem Kit Dill Redi 7001-R	\$3.33
469-00090	VS90	—	Key at base attaches via press clip; Fits Dodge Dart, Mitsubishi Mirage	\$3.81
469-17208	46917208	—	Rubber Snap-in replacement valve for GM & Ford (not OE certified) China	\$9.99
469-17436	46917436	—	Smart Sensor Snap-In Valve for ITM, Cub, 31Inc, Pilot	\$5.00
469-20014	—	SH20014AK	Kit Fits EZ Sensor 34000 Stem	\$2.25
	VS1010	—	Fits Hyundai Sante Fe Snap-In 7mm	\$2.10
	VS65	—	Base of stem is square Snap-In Fits Dodge Rams, Jeep Cherokee	\$2.36
	VS35	—	Dill TPMS clamp-in valve Dodge Ram	\$5.21
	46934000	—	Alum Stem for Schrader 46133500 dual band	\$4.71
469-20031	—	SH20031AK	Assy Kit for Pacific TPMS	\$2.14
	VS965	—	Replacement valve stem for Hyundai / Kia	\$3.50
469-00919	VS919	—	Replacement TPMS stem for 19.5 Trk Wheels	\$16.25
469-20019	—	SH20019AK	Assy Kit Honda TPMS	\$1.95
	VS241	—	2017 Ford F350 Super Duty dually aluminum	\$5.12
	VS20	—	Rubber Valve Stem for 2015 and newer GM and Ford	\$1.89



SH20036AK



VS919



VS925A



VS925C



469-00950



SH20020



9066K



VS70



VS80



VS90



469-17436



VS1010



VS65



VS20



VS20

PREMA

Prema Radial Repairs - Passenger and Light Truck

PREMA Center-Over-Injury Repairs are designed for use in all radial tires. The PREMA Radial Repair is intended for use in HOT or COLD applications. PREMA Radial Repairs are designed for use in the crown, sidewall and shoulder of radial tires. Install with PREMA Ultra Fast Dry Vulcanizing Cement. Refer to the PREMA Repair Chart for proper selection of the repair unit. Always fill the injury channel with the appropriate Prema repair material.



Ascot No.	McGee No.	Description	L (in.)	W (in.)	# Plies	Qty/Box	Price
575-05109	PR109	Radial 109	3	1 3/4	1	20	\$17.77
575-05110	PR110	Radial 110	3 1/4	2 1/4	1	20	\$20.65
575-05111	PR110B	Radial 110	3 1/4	2 1/4	1	80	\$80.23
575-05112	PR112	Radial 112	4 3/4	3	1	10	\$17.30
575-15112	PR112B	Radial 112	4 3/4	3	1	40	\$74.33
575-05113	PR113	Radial 112HD	5	3 1/4	1	10	\$20.37
575-05114	PR114	Radial 114	5 1/4	3 1/2	1	10	\$27.42
575-05120	PR120	Radial 120	5	3 1/4	2	10	\$33.30

Prema Universal Repairs

PREMA Universal Repairs are designed for NAILHOLE REPAIRING of tubeless tires in the CROWN area only. Universal Repairs are available in round or square versions. Install with PREMA Ultra Fast Dry Vulcanizing Cement. Always fill the injury channel with the appropriate Prema repair material.



Ascot No.	McGee No.	Description	L (in.)	W (in.)	Qty/Box	Price
550-00502	PUR2	Universal Round 2	2 1/4	--	50	\$25.44
550-00522	PUS2	Universal Square 2	1 3/4	1 3/4	100	\$34.07
550-00533	PUS3	Universal Square 3	2 1/2	2 1/2	100	\$52.12
550-00534	PUS4	Universal Square 4	3	3	50	\$39.19

RAD 100 Series Radial Repair Units

RL110 Bulk 30 Per Bag - \$42.95

REMA RAD 100 Series center-over-injury repair units has replaced older styles of non-flex to non-flex patches throughout the entire world . . . virtually revolutionizing the process of radial repair patch reinforcement.



Ascot No.	McGee No.	Patch Size Inches	(mm)	Qty/Box	Price
575-00110	RAD110	2 x 2-3/4	55 x 75	20	\$39.95
575-00115	RAD115	3-1/2 x 3	70 x 115	10	\$48.95
575-00120	RAD120	4-7/8 x 3	85 x 130	10	\$48.95

Rep Boy

#3050RB

WAS \$495

NOW - \$259⁹⁵

The Rep Boy has a 360° swivel top, adjustable tire spreader, four tilt settings, and a tool bin. The adjustable tire spreader can accommodate all tires from garden service right through to light truck tires. The Rep Boy is versatile enough to be used at the corner service center, high volume tire service centers, or section repair shops.



Manual Tire Spreader

- Lightweight and easy to use
- Special locking pin for safety
- Made from durable materials
- Locks both beads open for easy tire inspection and repair



Ascot No.	McGee No.	Description	Price
605-14191	MS1	Manual Tire Spreader	\$46.99

Automatic Truck Tire Spreader - Ascot

Ascot #603-00825 - BJS825

\$1,295⁰⁰

- Air lift allows operator to lift without lifting the tire/wheel
- Heavy gauge steel construction
- Work light included
- Air regulator/lubricator included
- Similar to AME 73200 & Rema 6551
- Common repair parts available
- Up to 20.5 x 25 tires



Rema Tip Top Universal Patch

The Hole Solution™ - The only patch you'll ever need for making a nail hole repair. For radial and bias-ply passenger or truck tires.



Ascot No.	REMA No.	Injury Size	Qty.	Price
550-26707	UP3	Small Nailhole	100	\$54.95
550-26714	UP45	3/16" Nailhole	300	\$239.95
550-26721	UP6	1/4" Nailhole	50	\$59.95
550-26745	UP8	5/16" Nailhole	50	\$79.95

Paintstik® Marker



Markal

Permanent, waterproof and fadeproof. Marks on wet tires, withstands retreading temperatures. Nontoxic, contains no lead. Sold 12 per box. Other colors available.

Ascot No.	McGee No.	Color	Price
459-80257	MKWhite	White	\$9.80
459-80258	MKYellow	Yellow	\$9.99

Professional Stitchers

- Corrugated ball bearing stitcher with hardened steel wheel and varnished wooden handle



Ascot No.	Part #	Description	Price
536-00001	30	1-1/2" Diameter x 1/16" Face	\$8.41

- Used to inspect injuries in tires and to remove small stones and debris



Ascot No.	McGee No.	Description	Price
537-00001	1013P	Black Handle Awl	\$5.02

Carbide Cutting Tools



Part No.	Description	Prices
BU18T	1/8" Taper Burr (PCC1)	\$7.69
BU14T	1/4" Taper Burr (PCC2)	\$30.88
BU38T	3/8" Taper Burr (PCC4)	\$27.13
BU12B	1/2" Ball Burr	\$25.00
BU732N	7/32" Long Pointed Burr (Use with 1/4" Plug)	\$30.00
BU516N	5/16" Long Pointed Burr (Use with 3/8" Plug) (PCC3)	\$44.09
BU716N	7/16" Long Pointed Burr (Use with 1/2" Plug)	\$98.76

Wire Brushes

Ideal for buzzout repair of radials



535-08014

535-15463

Copper Center® Wire Wheel Brushes-Wire Fill

Ascot #	Mfg. #	Dia.	Wire Size	Arbor RPM	Hole	Price
535-15463	15463	2"	.0118"	20,000	1/2"-3/8"	\$9.00
535-15533	15533	3"	.006"	20,000	1/2"	\$13.43
535-15543	15543	3"	.008"	20,000	1/2"	\$11.03
535-15563	15563	3"	.0118"	20,000	1/2"-3/8"	\$10.62

Knotted Brushes

535-08014	08014	3"	.014"	20,000	1/2-3/8"	\$28.20
535-08034	08034	4"	.0118"	20,000	1/2-3/8"	\$32.61

Tire Marking Crayons



- Bright Color On Any Tire Will not melt, soften or rub off in the pocket. A quality crayon that marks on tires, tubes and rubber. Sold 12 per box.



The White Markal Crayon in use.

Ascot No.	McGee No.	Color	Price
459-51420	51420	White	\$5.49
459-51422	51421	Yellow	\$5.49

Buffing Wheels



Ascot No.	McGee No.	Description	Price
539-00033	33	3/8" - 24 Arbor for mounting buffing wheels	\$5.00
539-10001	BC1	Fine grit coarse, round-nose buffer wheel, Tungsten Carbide 2 1/2" diameter — use on tires or tubes	\$3.98
538-13000	1030G	2" fine tooth buffing cone-Ideal for passenger inner liners	\$14.95
538-01034	1034T	2" med. tooth buffing cone-Ideal for passenger inner liners	\$19.95
539-00788		(2) No. BC-1 buffing wheels mounted back-to-back on No. 33 Arbor (order item separately)	
538-14000	RH140	Faster, cleaner buffing; avoid burning	\$22.95

Tire Repair Knife



- High carbon steel, round point skiver, round burnt finish handle (riveted)

Ascot No.	McGee No.	Blade Length	Price
531-75190	X2RF	4" (102mm)	\$9.83

- High carbon steel, taper point, glaze finish, round burnt finish handle (riveted)



Ascot No.	McGee No.	Blade Length	Price
531-75190	X2T	4" (102mm)	\$8.40



- Clean out small injuries

Rema No.	McGee No.	Description	Price
537-95893	261RT	Reamer	\$5.89



- This tool is a must for professional tire repairs
- Eliminates power buffing on many tire repairs
- Scraper removes material that might contaminate buffing wheels, ensuring a better repair every time

Ascot No.	McGee No.	Blade Length	Price
537-00004	933	Black Handle Inner Liner Scraper	\$5.71

Premium Quality Chemical Vulcanizing Rubber Patches — Value Pricing!

Jet Repair Cabinet

This cabinet has the basic fast moving Jet products to get you started. Cabinet included. Empty cabinet available. #PCAB1

\$198.00!

Introductory Special!
JETRC



Universal repairs - nail hole injuries in crown area only.

Bias or Radial — Universal Repair Units - Square

Repair Unit	Inch	mm	Qty/Box	Price
AS45	1 3/4 sq	45 sq	30	\$3.67
AS451000	1 3/4 sq	45 sq	1000	\$111.87
AS55	2 1/8 sq	55 sq	30	\$4.90
AS551000	2 1/8 sq	55 sq	1000	\$156.10



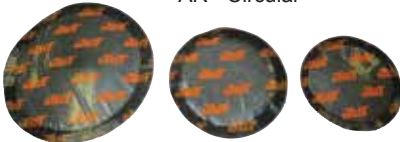
AS - Square

Bias or Radial — Universal Repair Units - Circular

Repair Unit	Inch	mm	Qty/Box	Price
AR45	1 3/4 dia	45 dia	30	\$3.90
AR451000	1 3/4 dia	45 dia	1000	\$118.73
AR55	2 1/8 dia	55 dia	30	\$4.77
AR551000	2 1/8 dia	55 dia	1000	\$146.10
AR75	3 dia	75 dia	30	\$7.87

Bulk packaging available

AR - Circular



Repair Unit	Size		Qty/Box	Price
	Inch	mm		
R110	2 3/4 x 2	70 x 50	20	\$8.97
R110H	3 1/4 x 2 3/8	80 x 60	20	\$11.20
R112	4 3/8 x 2 1/2	110 x 65	10	\$13.90
R114	5 3/4 x 3	145 x 75	10	\$11.63
R120	5 x 3	125 x 75	10	\$11.27
R122	6 7/8 x 2 3/8	175 x 80	10	\$15.20
R124	8 1/4 x 3 3/8	210 x 85	10	\$19.90
R126	10 1/4 x 3	260 x 75	10	\$22.60

JET Radial Repairs - Passenger and Light Truck

JET Center-Over-Injury Repairs are designed for use in all radial tires. The JET Radial Repair is intended for use in HOT or COLD applications. JET Radial Repairs are designed for use in the crown, sidewall and shoulder of radial tires. Install with JET Fast Dry Vulcanizing Cement. Refer to the JET Repair Chart for proper selection of the repair unit. Always fill the injury channel with the appropriate JET repair material.



Radial Repair Units



Xlight Tire Service LED Work Light

- Designed for hands-free lighting during tire service and other work applications



Xlight Tire Service LED Work Light
\$42.95

The clamp on handle quickly and easily grips over the bead of a tire.

Ascot No.	McGee No.	Description
312-14921	31214921	Xlight Tire Service LED Work Light

Fast Dry Vulcanizing Cement

JET Fast Dry Vulcanizing Cement is formulated to provide outstanding performance when used with JET Repair Materials.



McGee No.	Description	Size	Price
1645J	Fast Dry Vulcanizing Cement (Flammable)	8 fl. oz.	\$3.68
1646J	Fast Dry Vulcanizing Cement (Flammable)	32 fl. oz.	\$9.60

Pre-Buff Cleaner

JET Pre-Buff Cleaner is formulated to remove contaminants and silicone from the innerliner of the tire prior to buffing.



McGee No.	Description	Size	Price
1718J	Cleaner (Flammable)	32 fl oz	\$11.25
1722J	Pre-Buff Cleaner (Aerosol)	16 fl oz	\$8.65

Tire Denailer

- Blade length 3"
- Point diameter 5/16"
- Made in USA



537-00353
\$6.45

Developed by a tire repairman to probe the injury and push the nail back through the tire. Probe has a recess at the tip to accept the point of a nail or other puncturing object.

Quincy QT® Compressors "Rated #1"



Meticulously designed for maximum productivity. Completely rebuildable with stainless steel valves and heavy duty cast iron crank case and cylinders. Leading the industry with the most CFM per brake horse-power. Includes ASME receiver, enclosed belt guard, EPAct high efficiency motor, and loadless auto stop/start.

Part No.	HP	Electric Spec.	ACFM at 175 PSI	Tank Size	Tank Style	Price
251CS80VCB1MAG	5	230V, 1ph	17.2	80	vert.	\$1,995
271CS80VCB1MAG	7.5	230V, 1ph	22.6	80	vert.	\$2,350
P2103DS12VCB3MAG	10	230V, 3ph	35	120	horz.	\$3,799

5-Year Warranty Program



- Quincy's True Blue 5-Year Warranty
- Register unit within 10 days after purchase to activate warranty
- Purchase and use genuine Quincy filters and lubricant during the warranty period. (Proof of purchase required)
- Receive a 5-year limited warranty on the compressor.
- Receive a 2-year limited warranty on the package.
- Motors and engines are warranted by the original manufacturer.



QGS-7.5 High Performance Series 101-10000

Quiet Rotary Screw Air Compressors

- Quiet operation - lowest noise levels available
- 100% continuous duty operation
- Compact design in a complete package
- Simple and low cost maintenance
- Clean dry air
- Lower operating costs
- Proven design by a world leader in compressor technology
- 21.2 cfm @ 150 psi
- 208/230/460 - 3 ph



Pictured with dryer

5HP to 15HP Available
(5HP and 7.5HP Available 220V.1Ph.)

QGS7.5 - 3 ph \$6,085.00
QGS75D3

Lubricants

McGee Company stocks a variety of lubricants in various weights to fit your needs. Make sure you have the appropriate weight lubricant in your system to protect against high temperatures and frictional wear of bearings and cylinders that reduces the life of your compressor. McGee Company carries Quincy specific Quin-Cip/Quin-Syn through our house brand.



Part No.	Description	Price	Appl.
112541G032	10 weight gal.	\$29.95	Cold < 32°
112542G068	20 weight gal.	\$29.95	Warm < 68°
112543G100	30 weight gal.	\$31.85	Hot > 85°

Champion or Quincy Gas Powered Compressor

Now \$2,395.00!

Your Choice!!

Heavy Duty 13HP Honda engine, 2 stage compressor, 23.2 CFM at 175 PSI!

Model HGR73H



Champion Gasoline Air Compressors

- Truck Bed Mountable, ideal for Field Service Applications
- Heavy Duty Two-Stage Compressors
- V-Belt Drive with Totally Enclosed Belt Guard
- Centrifugal unloader for loadless start prolongs motor life
- Gasketless Design
- Vibration Isolators Included on 30 gallon models
- **Each new assembled unit comes with a five-year limited warranty**

WARNING: Compressor with incorrect voltage will seriously affect compressor operation. Check the electrical panel where service enters the building to verify requirements. Specify 208V, 230V, or 460V.

Quincy Condensate Purifiers

Commercial and industrial sites have struggled with how to properly dispose of hazardous condensate waste for years.

Section 309 of Federal Water Pollution Control Act imposes significant fines for improper disposal.



Quincy models are:

- High efficiency
- Easy to service
- Meet EPA standards
- Light weight

McGee No.	Price
QCS100	\$471.99
QCS450	\$1,198.99
QCS900	\$2,130.99

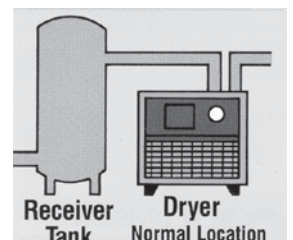
Don't forget lubricators, regulators, filters or combos to keep your system running properly!



ELIMINATE WATER!

Where Water Comes From

The atmospheric air entering a compressor intake contains water vapor. Because of the effects of compression, most of this water vapor turns into troublesome liquid water in your air lines.



QPNC15	Quincy Dryer 15 CFM 1 PH 1/2"	115 V	\$749.00
QPNC35	Quincy Dryer 35 CFM 1 PH 1/2"	115 V	\$1,095.00
QPNC50	Quincy Dryer 50 CFM 1 PH 1/2"	115 V	\$1,465.00

EQUAL FLEXX

THE NEXT GENERATION OF EQUAL



EQUAL FLEXX™ is the most scientifically tested and refined internal balancer available. 50+ compounds were put to the test.

The trucking industry continues to document the benefits of balancing all wheel positions and IMI has proven it in real world trials. Delivering significant tire and fuel savings with a superior return on investment for fleets.

THE NET RESULTS FOR DEALERS

EQUAL FLEXX offers enhanced performance and an even greater ROI than any other option available. This means greater sales opportunities for all of us.

- No filtered valve core required means simpler installation
- Drop in Bag application with simplified quantity chart
- Larger particle size makes it easier to remove
- No slip hazard on the shop floor

THE NET RESULTS FOR FLEETS

- More fuel savings, more even tire wear, and the smoothest ride
- 2x more vibration absorption power
- 15% better performance
- Easier to use



Wheel Size	Tread Width (mm)	Quantity
17.5" & 19.5" (Light Truck)	195 to 240	F/3 oz
	245 to 345	E/4
	350 to 440	D/6
	445	C/8



Wheel Size	Tread Width (mm)	Quantity
17.5" & 19.5"	225 to 245	D/6
	250 to 285	C/8
	290 to 315	B/10
	320 to 395	A/12
22.5" & 24.5"	400 to 445	W/16
	235 to 265	C/8
	270 to 290	B/10
	295 to 345	A/12
	350 to 495	W/16

Counteract

Balancing the wheels of transportation

Balance the Whole Truck Wheel Assembly

TIB10

10 oz. drop in bag

As low as \$10.29

Counteract Balancing Beads

- Automatic, readjusting, lifetime balance of the tire
- Increased fuel efficiency
- No more uneven treadwear or vibrations



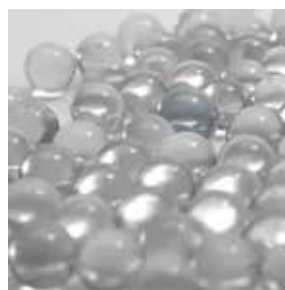
The Counteract bag in bag application makes it easy to install, simply throw the inner bag into the tire when the tire is broken down. The product can also be easily injected into the tire through the valve stem. It is recommended that all wheel assemblies on the vehicle be balanced, decreasing the rolling resistance and resulting in increased tire tread life and improved fuel economy. Fuel savings of 5 – 12% annually have been reported by fleets of Commercial Over-the Road trucks and pickup trucks alike.

Counteract is the only balancing product on the market proven to improve fuel economy in two separate S.A.E and TMC type II tests.

Counteract comes in an outside white plastic package, simply tear open the bag and inside there is a pouch of Counteract in a special thin mil plastic. Simply throw that inner bag inside the tire, once the tire reaches 40 mph the bag will break open and the Counteract will be distributed throughout the tire.



Product	Description - Case Quantity Discounts
45100013	APPLICATOR PUMP FOR COUNTERACT
TIB4	TOSS-IN BAG 4 OZ CS/92
TIB6	TOSS-IN BAG 6 OZ CS/64
TIB8	TOSS-IN BAG 8 OZ BAL BEADS 52/CS
TIB10	TOSS IN BAG 10 OZ 40/CS
TIB12	TOSS IN BAG 12 OZ 36/CS



How it Works:

The balancing beads will be distributed around the tire as it begins to roll through centrifugal force. As the centrifugal force of the balance (heavy spot) increases and pulls up and down on the suspension, the beads will start to move in the opposite direction of the downward and upward through inertia. The beads continue to travel until the complete wheel assembly is balanced.



1/2" DR Deep Impact Sockets

Ascot #	McGee #	Description	Price
163-01018	1018MD	1/2" Drive x 18mm Deep	\$7.90
163-01019	1019MD	1/2" Drive x 19mm Deep	\$8.38
163-01021	1021MD	1/2" Drive x 21mm Deep	\$8.50
	1023MD	1/2" Drive x 23mm Deep	\$13.40
163-01024	1024D	1/2" Drive x 3/4" Deep	\$8.13
	1024MD	1/2" Drive x 24mm Deep	\$16.10
163-01026	1026D	1/2" Drive x 13/16" Deep	\$8.13
163-01032	1032MD	1/2" Drive x 32mm Deep	\$11.93
163-01034	1034D	1/2" Drive x 1-1/16" Deep	\$10.65
163-01036	1036D	1/2" Drive x 1-1/8" Deep	\$10.53
163-10143	1014MD	1/2" Drive x 14mm Deep	\$5.43
163-10151	1015MD	1/2" Drive x 15mm Deep	\$5.53
163-10161	1016D	1/2" Drive x 1/2" Deep	\$4.75
163-10163	1016MD	1/2" Drive x 16mm Deep	\$3.80
163-10171	1017MD	1/2" Drive x 17mm Deep	\$7.75
163-10181	1018D	1/2" Drive x 9/16" Deep	\$4.98
163-10201	1020D	1/2" Drive x 5/8" Deep	\$5.30
163-01018	1018MD	1/2" Drive x 18mm Deep	\$7.90
163-10222	1022MD	1/2" Drive x 22mm Deep	\$7.73
163-01024	1024D	1/2" Drive x 3/4" Deep	\$8.13
163-01026	1026D	1/2" Drive x 13/16" Deep	\$8.13
163-10271	1027MD	1/2" Drive x 27mm Deep	\$8.98
163-10281	1028D	1/2" Drive x 7/8" Deep	\$8.78
163-10300	1030D	1/2" Drive 15/16" Deep	\$7.79
	1030MD	1/2" Drive x 30mm Deep	\$20.68
163-11032	1032D	1/2" Drive x 1" Deep	\$14.70
	1033MD	1/2" Drive x 33mm Deep	\$22.58
163-01036	1036D	1/2" Drive x 1-1/8" Deep	\$10.53
	1042D	Hex 1/2" Drive x 1-5/16" Deep	\$22.58
163-01048	1048D	1/2" Drive x 1-1/2" Deep	\$20.13
	2133MD	12 Point 1/2" Drive x 33mm Deep	\$22.58

1/2" DR Flip Socket Sale!

STD. "Flip" Socket & Metric "Flip" Socket		Double-end reversible impact socket. Fits passenger and light truck wheel nuts.		
Ascot #	Part No.	Description		Price
	0703T	7/8" x 15/16" Deep Thin Wall		\$11.33
167-12910	1291	Standard Flip 19mm and 21mm		\$10.20
	1291D	19mm-21mm		\$10.80
167-12912	1291DT	Flip Thin 19mm and 21mm		\$8.85
	1246D	3/4"-13/16" deep		\$9.23
	1246DT	Extra thin 1246D		\$9.00
	1249D	7/8"-15/16" deep		\$9.00

1/2" DR Extra Thin Wall Impact Sockets

Ascot #	McGee #	Description	Price
163-10172	1017MDT	1/2" Drive x 17mm Extra Thin Wall	\$8.55
163-10191	1019MDT	1/2" Drive x 19mm Extra Thin Wall	\$9.45
163-10211	1021MDT	1/2" Drive x 21mm Extra Thin Wall	\$8.85
163-10223	1022MDT	1/2" Drive x 22mm Extra Thin Wall	\$11.48
163-10230	1023MDT	1/2" Drive x 23mm Extra Thin Wall	\$15.95
163-10241	1024DT	1/2" Drive x 3/4" Extra Thin Wall	\$8.08
163-10261	1026DT	1/2" Drive x 13/16" Extra Thin Wall	\$8.95
163-10282	1028DT	1/2" Drive x 7/8" Extra Thin Wall	\$11.25

3/4" DR Impact Sockets and #5 Spline DR Impact Sockets

Ascot #	McGee #	Description	Price
164-02026	2026S	3/4" Drive x 13/16" Square	\$17.13
164-02033	2033MD	3/4" Drive x 33mm Deep	\$18.60
	2036DT	3/4" Drive x 1-1/8" Deep Thin	\$31.86
164-20402	2040DT	3/4" Drive x 1-1/4" Deep Thin Wall	\$22.98
164-20481	2048D	3/4" Drive x 1-1/2" Deep	\$22.48
164-02323	2323C	3/4" Drive 1-1/2" Hex x 13/16 Square	\$34.38
166-04026	4026S	#5 Spline x 13/16" Square	\$51.43
166-04048	4048D	#5 Spline x 1-1/2" Deep w/Inside Lip	\$66.58

**1" DR Square Impact Sockets**

Ascot #	McGee #	Description	Price
165-03021	3021MS	1" Drive x 21mm Square	\$25.60
165-03026	3026S	1" Drive x 13/16" Square	\$19.60
165-03030	3030S	1" Drive x 15/16" Square	\$22.45

1" DR Combination Impact Sockets

Ascot #	McGee #	Description	Price
165-03323	3323C	1" Drive 1-1/2" Hex x 13/16" Square	\$38.63
165-03321	3321MC	1" Drive 41mm x 21mm Square	\$49.83

1" DR 1-1/2" Budd Wheel Impact Socket

Ascot #	McGee #	Description	Price
165-30481	3048D	1" Drive x 1-1/2" Deep w/Inside Lip	\$33.63
165-30482	3048DR	1" Drive x 1-1/2" Deep - Standard	\$34.73
	3048DT	1" Drive x 1-1/2" Deep - Thin	\$58.65

1" DR Metric Impact Sockets

Ascot #	McGee #	Description	Price
165-30302	3030MD	3/4" Drive x 30mm Deep	\$34.03
165-03033	3033MD	1" Drive x 33mm Deep	\$34.02
	4036MD	1" Drive x 36mm Deep	\$44.83
165-30381	3038MD	1" Drive x 38mm Deep	\$33.75
165-03041	3041MD	1" Drive x 41mm Deep	\$37.15
165-30410	3041MDT	1" Drive x 41mm Deep Thin Wall	\$44.40

1" DR SAE Impact Sockets

Ascot #	McGee #	Description	Price
165-03034	3034DT	1" Drive x 1-1/16" Thin Wall Deep	\$29.90
165-03042	3042D	1" Drive x 1-5/16" Deep	\$33.00
165-03044	3044D	1" Drive x 1-3/8" Deep	\$28.25
	3046D	1" Drive x 1-7/16" Deep	\$45.13
165-03052	3052D	1" Drive. x 1-5/8" Deep	\$33.25
165-03054	3054D	1" Drive x 1-11/16" Deep	\$24.05
165-03056	3056D	3/4" Drive x 1-3/4" Deep	\$35.48
165-03060	3060D	1" Drive x 1-7/8" Deep	\$57.65
165-30281	3028D	1" Drive x 7/8" Deep	\$25.14
165-30301	3030D	1" Drive x 15/16" Deep	\$26.15
165-30321	3032D	1" Drive x 1" Deep	\$37.78
165-30361	3036D	1" Drive x 1-1/8" Deep	\$25.48
165-30362	3036DT	1" Drive x 1-1/8" Deep Thin Wall	\$30.10
165-30380	3038D	1" Drive x 1-3/16" Deep	\$31.15
165-30401	3040D	1" Drive x 1-1/4" Deep	\$32.88
165-30402	3040DT	1" Drive x 1-1/4" Deep Thin Wall	\$32.95
165-03042	3042D	1" Drive x 15/16" Deep	\$33.00
165-30420	3042DT	1" Drive x 15/16" Deep Thin	\$40.45
165-03052	3052D	1" Drive x 1-5/8" Deep	\$33.28

Impact Extensions & Adapters

Ascot #	McGee #	Description	Price
169-01003	1003E	1/2" Drive x 3" L Extension	\$7.55
169-01005	1005E	1/2" Drive x 5" Extension	\$10.83
169-01020	1020A	1/2" Drive Female x 3/4" Male Adapt.	\$10.25
169-02006	2006E	3/4" Drive x 6" Extension	\$24.75
169-02010	2010ASC	3/4" Drive Female x 1/2" Male Adapt.	\$16.60
169-02030	2030A	3/4" Drive Female to 1" Male Adapt.	\$19.88
169-03006	3006E	1" Drive x 6" Extension	\$40.18
169-03013	03013	1" Drive x 13" Extension	\$53.87
169-03020	3020A	1" Drive Female x 3/4" Male Adapt.	\$25.65
169-04010	5008A	#5 Spline Female x 3/4" Male Adapt.	\$68.90
169-04020	4020A	#5 Spline Female x 1" Male Adapt.	\$48.73

Hub-Centric Wheel Nuts - The Original! - High Quality

By filling the void between the stud hole, "clocking" is eliminated, and problems caused by clocking, such as wheel offs and wheel hub vibrations, are eliminated.

- Hub Centric Nut fills void standard flange nuts don't
- Stops rim from shifting forwards or backwards
- Eliminates "clocking" caused by standard wheel nuts not filling wheel hole completely
- Certified American Steel
- Each part tested for thread, fit and finish
- 50 per box

49100133
\$7.49 ea.

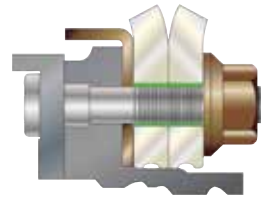
Ascot No.	Description
491-00133	33mm Hex X 1.5mm Thread



Note marks on the disc (just outside stud hole) caused by "clocking."

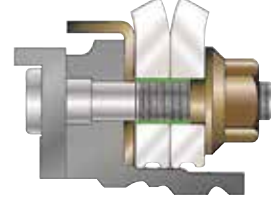
This nut had been torqued to specifications and retorqued per factory settings.

Wheel Assembly with Standard Nut



Void (Highlighted in Green) between stud and hole.

Wheel Assembly with Hub Centric Nut



Hub centric nut fills void between stud and hole.

Skirt Nut

- Stops wheel/hub vibrations and many tire wearing problems
- Stops wheel movement (clocking) on the face of the hub
- Eliminates wasted fuel caused by rolling resistance or "drag"
- Meets and exceeds standards of SAE J1965 or torque tension
- Replaces all style M22 flange nuts on hub-piloted wheel
- Hex: 33mm
- Special graphite coating prevents nut from rusting onto the hub
- Fills in the gap between the stud and the bolt 3/16" (5mm)
- 50 per box



Extended threading allowing Skirt Nut to go down into Hub-Piloted Disc Wheel an extra 3/16" (5mm) into stud hole

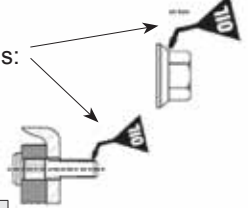


MOUNT tire and wheel assembly using a tire dolly to avoid damage to threads and potential back injuries.

Budd Nuts and studs should not be lubricated. TIA recommends: lubricate Hub-Pilot studs and nuts with 2 drops 30w oil before tightening.

New Skirt Nut Sizes!

Ascot No.	Mfg. No.	Description	Price
491-02906	GL-2906 333SN6	Haltec 6mm Sleeve Nut • Steel Steers	\$8.70
491-02919	GL-2919 333SN19	Haltec 19mm Sleeve Nut • Aluminum Steers • Steel/Steel Drives • Steel Outer/Aluminum Inner Drives	\$10.70
491-02928	GL-2928 333SN28	Haltec 28mm Sleeve Nut • HD Aluminum • Super Single • Wide Base • Aluminum Outer/Steel Inner Drives	\$11.38
491-02939	GL-2939 333SN39	Haltec 39mm Sleeve Nut • Dual Aluminum Drive Axle	\$11.60



#606 Oil Can
\$12.50



McGee No.	Mfg. No.	Similar To:		Sale Price
891RZ (RH)	GL-2001	Budd-37891/2	Euclid-5552-R/L	\$.88
892LZ (LH)	GL-2002	Nuturn-W-13/14	Batco-13-3012-R/L	\$.88
888RZ (RH)	GL-2101	Budd-37888/9	Euclid-5652-R/L	\$1.53
889LZ (LH)	GL-2102	Nuturn-W-15/16	Batco-13-3013-R/L	\$1.53
995LZ (LH)	GL-2103	Alcoa-5554	Euclid-5554-R/L	\$5.08
995RZ (RH)	GL-2104	Budd-70613/4		\$5.08
269Z	GL-2202	GMC-3771410		\$3.58
881M	GL-2302	(1 ¹ / ₂ Hex) M.W. 88881		\$4.13
333B	GL-2301	(1 ¹ / ₄ Hex) Budd 106333		\$2.03
Metric Outer Nuts				
GL2009	GL-2009	Hino-9004-21112	Isuzu-1-4233-023	\$5.20
GL2010	GL-2010	(Inner Thread = M30-1.5)		\$5.20

McGee No.	Mfg. No.	Similar To:		Sale Price
336RZ (RH)	GL-1003	Budd-35336/7	Euclid-5735 R/L	\$3.26
337LZ (LH)	GL-1004	Nuturn-W107/108	Batco-13-3007-R/L	\$3.26
621RY (RH)	GL-1005	Budd-22621/2	Euclid-5568 R/L	\$3.68
622LY (LH)	GL-1006	Nuturn-W105/106	Batco-13-3006-R/L	\$3.68
988RZ (RH)	GL-1011	Alcoa-5988-R/L	Nuturn-W-486/7	\$3.55
988LZ (LH)	GL-1012	Euclid - 5988-R/L	Batco 13-3026-R/L	\$3.55
Grade 8.2				
708RZ (RH)	GL-1001	Euclid-7895R/L	Budd-10708/9	\$1.53
709LZ (LH)	GL-1002	BWP-M128/9	Batco-13-3032R/L	\$1.53
Metric				
GL1009 (RH)	GL-1009	Hino-9004-23101	Isuzu-1-42335-005	\$7.33
GL1010 (LH)	GL-1010	(M20 Inner & M30 Outer Threads)		\$7.33

30 HYDRAULIC TRUCK SERVICE PRODUCTS

11076 - Original Maxi Bead Breaker

- Lightweight aluminum reduces weight by 40%
- Adjustable clamp allows for a perfect fit - regardless of the size of wheel
- Unit delivers 10 tons of force
- 2.75" (7 cm) stroke breaks beads often with only one "bite"
- Weight 31 lbs (14.1 kg) (Competitive to IMT1000)



11076

\$1,795.00

Hydraulic Rams

Used to push off rear rim flange and tire bead on earthmover wheels

- For all earthmover tires, trucks and perfect for construction

Ascot No.	Mfg. No.	Cap. (Tons)	Collapsed Height	Stroke	Price
422-13010	10301	10	4-3/4"	2-1/8"	\$183.85
422-13020	10302	10	6-3/4"	4"	\$194.15
422-13030	10303	10	9-3/4"	6-1/8"	\$194.15



13000AME

AJ506B

422-13030

422-13020

422-13010

55- and 100-Ton Aluminum Rams

Get the strength of a steel ram but with about half the weight. These single-acting, spring-return rams are easily carried around the shop, or into the field for on-the-vehicle repairs. They are ideal for truck axle correction, trailer frame straightening, general vehicle maintenance, and heavy-duty lifting.

McGee No.	Capacity	Low Ht.	Raised Ht.	Wt	Price
AJ506B	55-ton	12.25"	18.25"	29 lbs	\$699.98 (base included)
13000AME	100-ton	11"	17.5"	53 lbs	\$1,636.00 (base not included)

No Rim Rust

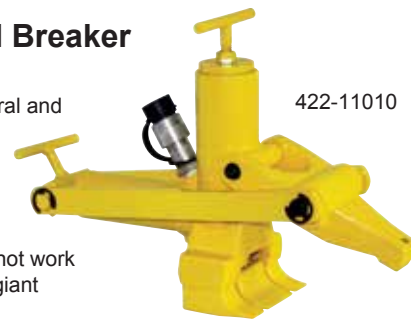
- Protects tires. Tire bead won't fuse to rim.
- Helps prevent corrosion on rims and rigs.
- Helps you comply with OSHA Regulation 3086.



Ascot No.	McGee No.	Description	Price
435-00015	FL41	4-1/2 Lbs. Pail	\$28.33
435-00125	FL25	25 Lbs. Pail	\$129.00
435-01120	FL120-1	120 Lbs. Drum	Call!
435-06002	0252539	Ultra Black Lube - 25 lb pail Ryder Approved!	\$88.99
Generic Version	AR25	25 Lbs. Pail	\$78.95

"Combi" Tire Bead Breaker

- Works on a single, two and three-piece truck, agricultural and earthmover tire/rim
- Breaks beads in seconds using 10,000 lbs. of force
- No screws, bolts or attachments
- "Combi" bead breaker will not work on five-piece earth mover giant wheel/rim



422-11010



422-16200

The 16200 upgrade kit can be added to Combi Bead Breakers in order to convert the tool so that it can work on new 3 piece wheels.



Ascot No.	McGee No.	Description	Price
422-11010	10101	Bead Breaker	\$545.00
422-12020	12020	Bead Breaker Kit. INCLUDES: 11010 Bead Breaker, 15920 Pump and 16040 Hose Assembly	\$950.00
422-16200	16200	Conversion Kit for Combi Bead Breaker	\$321.00

Ascot No.	McGee No.	Hose Length	Hose Type	Price
318-10603	AHP20H	8 ft.	Nylon Core Synthetic Fiber Reinforced Includes 10600 Coupler	\$48.65

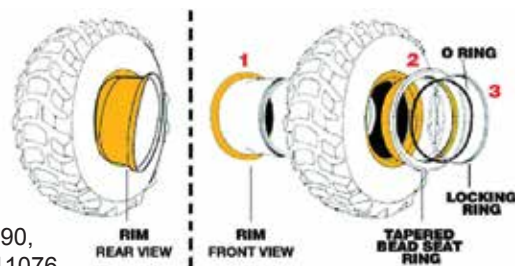
Modified "Combi" Tire Bead Breaker

- Modified 11010, the most popular tool for breaking beads on all agriculture wheels
- Most affordable bead breaker for new 3 piece wheel assemblies
- Modified jaw and feet allow for larger grab on larger wheel assembly
- All parts (except for modified feet and jaw) can be interchanged with 11010



Ascot No.	McGee No.	Description	Price
422-11020	11020	Modified "Combi" Tire Bead Breaker	\$729.00

3 Piece Wheel Assembly



Use 11010, 11090, 11075, 11020, 11076

Tire Cages



479-36006



**CALL FOR DETAILS
ON TIRE CAGES**

1-800-525-8888

**STARTING AT
\$229.00**

Golden Tool Tubeless Truck Tire Mount/Demount Tool

- Demounts/mounts 17.5" to 24.5" tires
- Use on all tubeless truck tires including super single/duplex tires, radial and bias
- Eliminates the need to lift tire and rim to remove the bottom bead, preventing possible strain or even serious injury



Ascot No.	McGee No.	Description	Price
448-00100	TNT100	Complete Tool	\$574.99

TNT200 for super singles

Economy Tire Mount/Demount Tool Set

- Mount tool assembly for 22.5 and 24.5 tires/wheels
- Demount assembly for 22.5 and 24.5 tires/wheels
- Nylon rollers protect the bead
- Heavy duty steel construction ensures long life
- Weight: 32 lbs. (14.5 kg)
- Sold as a complete set



448-12320

Ascot No.	McGee No.	Description	Price
448-12320	44812320	Complete Tool	\$299.00

Compare to TNT100

Heavy Duty Truck Torque Wrench - 168-12017 \$549.95

- Robust construction gives accurate results to +/-4% even in arduous work conditions
- Supplied with a calibration certificate to satisfy requirements of ISO 9000
- Break back action gives an unmistakable signal
- Break angle improves accuracy by reducing the possibility of overtorquing
- Dual scaled, Nm and ft./lbs.



Also available

1" Female x 13" Socket Extension! 169-03013 03013 - \$42.99

KenTool Porkchop™ Wrenches

- Holds outer cap nut on dual wheels while turning inner nut
- Lip fits in hole to secure wrench in place
- Fits standard and metric cap nuts



Ascot #	McGee #	Description	Size	Weight	Price
406-30609	TX9	SAE	1-1/2"	.4 Lbs.	\$17.95
406-30610	TX10	Metric	35 mm	.4 Lbs.	\$17.95
406-30612	TX12	Metric	41 mm	.4 Lbs.	\$17.95

OSHA Poster Kit

Demounting and mounting procedures for tube-type truck and bus tires; demounting and mounting procedures for tubeless truck and bus tires and multi-piece rim matching chart.



Part No.	Description	Price
OSHA24	OSHA Tire Mount Book 24 pgs	\$6.95
OSHA3400	Tire Mount 3 Poster Set	\$6.95

Duck-Billed Bead Breaking Wedges – Fiberglass Handled



Ascot No.	McGee No.	Handle No.	Length	Weight	Price
424-35429	TG11E	TG11EH	32"	9.1 Lbs.	\$104.92

Fiberglass Replacement Handles for Duck-Billed Bead Breaking Wedges

Handles are constructed with a solid core which has thousands of fiberglass strands and a unique resin making them super strong all-weather, chemical and insect-resistant.

- Ergonomic non-slip grips for slippery conditions.
- Replacement Adapters available.



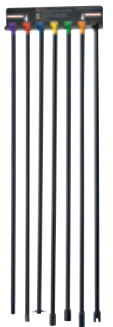
429-35227

McGee No.	Description	Price
TG11DH	19" Fiberglass Hammer Handle	\$35.31
TG11EH	33" Fiberglass Hammer Handle	\$47.83

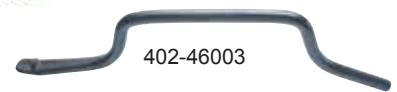
Lt Spare Tire Removal Tool Set

- Lower spare tire in 10 seconds
- Eliminates hunt for customer's tool
- Hanger included
- Do not use impact wrench
- 7 piece kit
- Replacement tools available

**\$69.95
#96090A**



Tubeless Tire Iron Sets



402-46003



402-46001

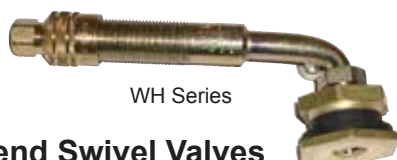


402-46002

- Sets provide all irons necessary for a variety of tire changing applications
- Use C bar with the B extension bar for easier use on large, wide-base truck tires
- Use on standard and large truck tires, including industrial, farm, buses and tractors

Ascot No.	McGee No.	Description	Length	Price
STANDARD				
402-46001	T46A	Med. Duty Mount/Demount Iron	36"	\$54.45
402-46002	T46B	Mount/Demount Iron	36"	\$57.95
402-46003	T46C	Offset Bar For Deep Well Tires	22"	\$39.25

32 LARGE BORE & AGRICULTURAL VALVE HARDWARE SPECIALS



WH Series

Single Bend Swivel Valves

Ascot No.	McGee No.	TR No.	Bend Angle	Horizontal Length "L"	Vertical Height "H"	Price
465-00650	WH300J650	J-650	80°	3 1/8	1 5/64	\$9.95
465-00653	WH300J653	J-653	80°	2 1/2	1 5/64	\$9.95



Miscellaneous Valves

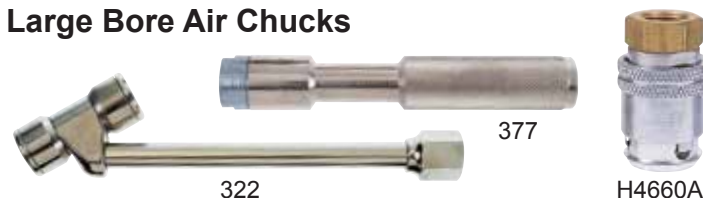
465-00670 T670 Loader Tire Valve complete with core, hex cap and "O" ring seal. Thread size is 1-1/16-12. Height is 1-25/32".	\$9.46
465-00702 H41 Tubeless Spud (TR-SP-2) , used with all Large Bore Swivel Valves. Fits 13/16" rim hole. Height is 1 1/16".	\$2.46
465-06702 H42 Straight Valve (TR-J-670-2) equipped with core and hex cap. Height is 1 1/2".	\$7.23
465-06703 H45 Spud and Valve Complete (TRJ-670-3) Consists of H-41 & H-42. Height is 1 5/8".	\$10.06



Large Bore Caps and Cores

Ascot No.	McGee No.	Description	Price
465-00145	A145	Large Bore Core (Short) Fits 305-32 threads	\$1.19
465-00148	A148	Screwdriver Valve Cap. Fits .482-26 threads	\$1.29
465-00149	A149	Hex Valve Cap fits .482-26 threads	\$1.27
468-00100	655TM	Adapts large bore down to std. (AD1)	\$1.89
468-08007	656	Same as 655TM but cap style	\$2.24

Large Bore Air Chucks



Ascot No.	McGee No.	Description	Price
478-00377	377	Long Lock-On Air Chuck.	\$20.57
478-00322	322	Large Bore Dual Foot Air Chuck. 45° Chuck For Easy Access To Valve. 1/4" NPT Female Thread.	\$33.83
478-04660	H4660A	L/B Clip-on Air Chuck 1/4" NPT	\$23.55



Tubeless Type Air-Liquid Valves

These clamp-in valves have a removable 5789 Core Housing to permit fast filling of tires with liquid ballast solution. Fit .625" valve holes.

Ascot No.	McGee No.	TR No.	Straight Length	Price
464-00618	TR618A	618A	1-15/16"	\$2.25
	TR218A	—	1-15/16" rubber snap in	\$1.82
464-00218	9TLB	218A	—	Box of 10 \$111.16

Ascot No.	McGee No.	TR No.	Bent Length	Bend Angle	Price
464-00623	TR623A	623A	1-19/32"	65°	\$10.37
464-00622	TR622A	622A	3-7/8"	90°	\$10.89
464-00621	TR621A	621A	2-5/16"	65°	\$3.03



Air-Liquid Core Housing and Accessories

TV6008C Tractor Front Wheel Valve Low profile tubeless valve offers minimum protrusion above rim hole. Effective length: 9/16". Chrome finish. Fits .625" or .453" rim hole. Standard Pack: 10/box.	\$2.42 ea
468-00203 594TM (TR-CH-3) Core Housing Screws into all valves and extensions shown here. Features O-ring seal. Standard Pack: 10 /box.	\$.99 ea
468-00201 9252 (TR-CH-1) Core Housing Screws onto base of old TR218 and TR220 tube valves. Standard Pack: 10/box.	\$1.72 ea
468-00010 LN10P Nylon Rim Nut Standard Pack: 100/box (LN10 - Brass - \$.34 ea)	\$.40 ea

Super Large Bore Air-Liquid Valve For Tractor & Grader



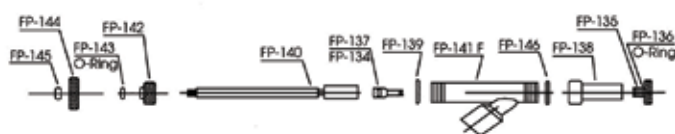
464-00216 R372 (CH-16) Fits T81, C-100 & TR SP 816 Tube Spud.	\$4.80
464-00208 T81 (SP-8) Fits 13/16" Dia. Rim Hole.	\$5.99
466-00910 H50 (TR-F-910) Straight Valve Assembly Components T81 Spud and R372 Core Housing.	\$10.92

F310 Valve Adapter Gun



Has a 1/2" female pipe thread and will attach to any calcium tire filling pump. It will extract the valve core from a standard bore valve or the core housing from a tractor valve. It will securely hold the valve core or core housing up in the gun body during tire filling or evacuation of liquid from tire. Due to its design it will permit faster evacuation of liquid from a tire than with other adapter guns. Replaces Deming #1010

464-00310 #F310 **\$79.00**



TRUCK VALVES AND ACCESSORIES

33

Metric Rim Hole Valve - MS Series

(9.7mm Valve Hole)

- Some imported trucks will have steel wheels that incorporate the 9.7mm valve hole (.390")



Recommend installation torque 100 in - lbs

McGee No	Ascot No	ETRTO	Bend	A	B	Price (ea.)
70MS27	462-07025	V3-20-5	27°	1-3/16"	1-9/16"	\$2.99
80MS27	462-08027	V3-20-7	27°	1-3/16"	2"	\$2.99
90MS27	462-09027	V3-20-4	27°	1-3/16"	2-3/8"	\$2.99
115MS27	462-11527	V3-20-6	27°	1-3/16"	3-3/8"	\$3.99
41MS00	462-04100	V3-20-1	STR	1-3/16"	—	\$2.99

Truck Grommets



McGee #	Rim #	Fits	Used On
5953	RG-15	.625 Valve Hole	TV-500 Series, TV-570 Series
RG15S	RG-15	.625 Valve Hole	TV-500 Series, TV-570 Series red grommet 288°
G160	RG-22	.812 Valve Hole	H-41, T-81, T-30, DS-385, DS210
5093	RG-46	.625 Valve Hole	TV-509, 510, 511
G174	RG-48	.625 Valve Hole	TV-513, 515
G170S		.625 Valve Hole	Heat-Resistant Grommet for TV-570 Series (400°) green
59765	RG-54	.453 Valve Hole	TV-416, 416L, 6008
525	RG-39	.625 Valve Hole	TV-416, 416L
G550	RG-70	.9975 Valve Hole	Fits TV-550 Series
0330	RG-30		TR-540 Series Valves

Valve Stem Ratchet Wrenches



469-00018

Ascot No.	McGee No.	Description	Price
469-00018	VSW18	For TR570 series valves	\$14.95
469-00020	VSW20	For TR540 series valves	\$16.95

Double Seal Cap

- A time, money and labor saving alternative to common valve caps
- Reduce pressure check time by 65%
- Designed for high pressure truck tire service
- Inflate, deflate or gauge directly thru the DS-1 saving time during inflation and pressure checks



**Now approved by
UPS and Ryder**

Visit McGee resource
page for details or link at:



Ascot #	McGee #	Description	Price
468-04191	DS1	Double Seal Cap	\$.69
468-02222	AE1	Alligator Double Seal Cap	\$.69

Tubeless Truck Clamp-in Valves Dill - with U.S.A. made grommet!

Straight clamp-in valves used on both demountable and non-demountable rims. For .625" diameter valve hole.

Available in BENT FORM - TR57213 - 13° - **\$1.61 ea.**



McGee #	Effective Length	100 Ea.	Cost Each
TR500	2"	\$1.00	\$1.34
TR501	1 1/2"	\$1.03	\$1.34
TR570	3 1/8"	\$1.08	\$1.40
TR571	3 3/8"	\$1.12	\$1.46
TR572	3 3/4"	\$1.17	\$1.52
TR573	4 3/8"	\$1.23	\$1.60
TR574	5"	\$1.26	\$1.64

Import TR572IV - \$.99 ea!

Tire Valves - 540 Series

O-ring seal valves for Alcoa truck wheel (9.7MM Valve Hole)

Many production Alcoa aluminum wheels are manufactured with a 9.77MM valve hole that requires an O-Ring tire valve. Haltec valves have a high temperature resistant O-Ring and a heavy duty metal valve cap.

0330 O-ring available for TV540 Series

NOW! 100 ea TV545D - **\$1.59 ea**



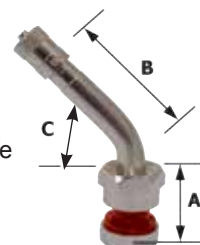
Valve TR No.	A Height	Bend Angle	B Length	Price ea.
TV543	2.40	-	-	\$2.61
TV543D	.98	60°	1.38	\$2.74
TV543E	.98	75°	1.38	\$2.64
TV544	2.90	-	-	\$3.15
TV544D	.98	60°	1.94	\$3.15
TV545	3.50	-	-	\$3.24
TV545D	.98	60°	2.6	\$1.99
TV546	4.25	-	-	\$3.17
TV546D	.98	60°	3.35	\$3.58
TV546E	.98	75°	3.35	\$3.62
TV546G	.98	36°	3.35	\$3.31

Metric Clamp-In Valves - 550 Series

Popular on all new Alcoa wheels!

Compatible with aluminum wheel designs with .389 valve hole.

- Viton grommets offer a greater temperature range, a better seal, and a longer service life — Maximum temperature 250°
- Easier installation with screwdriver slot.
- Recommend installation torque 45 in - lbs.



McGee #	A	B	C	Price ea.
TR553	2.31	-	-	\$3.99
TR553C	0.93	1.38	45°	\$3.99
TR553E	.98	1.38	75°	\$3.99
TR554D	.98	1.94	60°	\$3.99
TR555D	.98	2.6	60°	\$3.99
TR555E	.98	2.6	75°	\$3.99

Remember - Bending a valve after it is in the wheel will often ruin the grommet and will cause a valve leak.

Dill – OE

Snap-In Tubeless Tire Valves

Made with special rubber compound to resist ozone damage and prevent premature deterioration caused by rim hole compression, heat, cold. Maximum inflation pressure is 65 P.S.I.

Valve Hole	McGee No.	TR No.	Effective Length	Standard Pack Box	50 Pk Price
.453	TR412	412	7/8"	500	\$.28 ea.
.453"	TR413	413	1 1/4"	500	\$.29 ea.
.453"	TR414	414	1 1/2"	500	\$.35 ea.
.453"	TR423	423	1 1/2"	500	\$.53 ea.
.453"	TR418	418	2"	500	\$.35 ea.
.625"	TR415	415	1 1/2"	500	\$.53 ea.
.625"	TR425R	425	2"	500	\$.65 ea.



413 414 418 423 415 425



Machine Year Month Day

Snap-in tire valves have become a commodity even though they are critical in maintaining the correct tire pressure. As questions arise regarding the life of rubber components and as an effort to provide traceability for this product line, Dill provides a solution! Each Dill stem has the production data etched on it!

Now! Economical Asian stems TR413IV – \$.14 ea. TR418IV – \$.20 ea.

High Pressure Snap-In Valves — Dill OE

- Tubeless snap-in type valves for high pressure applications
- Maximum cold inflation pressure is 100 psi
- For .453" or .625" rim holes
- Do not use on tire rims that exceed .205" in thickness



Ascot No.	TR No.	Eff. Length	Valve Hole Dia.	Sale Price
461-00600	TR600HP	1.27"	.453"	\$.69
461-00602	TR602HP	2"	.453"	\$.89
461-00801	TR801HP	1.25"	.625"	\$.89
461-00802	TR802HP	2"	.625"	\$.99

TR600HPIV import - 100 each - \$.28 ea

TR416 Clamp-In Tubeless Tire Valves

- Nickel plated metal valves can be installed in all passenger cars, light trucks and industrial rims with .453" or .625" valve holes
- Rubber grommet forms a seal when valve is clamped to rim by tightening hex nut
- Maximum inflation pressure is 130 psi
- Includes 2 rubber grommets

Ascot No.	McGee No.	Eff. Length
462-00416	TR416	1-1/4"
461-01416	3641	2"

3640 - 1 1/4"

\$.79 ea.



Chrome Hi-Performance Valve

Perfect for Custom Wheels

Chrome plated valve and sealing cap. Especially suited to custom wheels. Includes grommets for .453" and .625" passenger car wheels.

5991B

462-00800

3/4"

\$.79 ea.



Radial Commander Valve For 15° Disc Wheels

- 23° bend clamp-down valve for .625" valve hole
- Bend allows clearance of brake drum for tire service **\$.29 ea.**

Ascot No.	Part No.	Description
462-01147	N1147	Radial Commander Valve



Ford "F" Series Truck Valve

- Ford "F" series with dual wheels
- Alcoa aluminum 16" wheels
- Front and rear wheels
- Chrome finish
- Dual seal cap not included

\$2.49 ea.



Ascot No.	McGee No.	Description
462-01600	VS902WP	Ford "F" Series Valve

Ford "Cut-Away" and Cargo Van Series Valve

- Ford "cut-away" and cargo van series with single rear wheels
- Accuride steel 16" x 7" wheels
- Front and rear wheels
- Dual seal cap not included

\$1.99 ea.



Ascot No.	McGee No.	Description
462-01575	TR575	Ford "Cut-Away" & Cargo Van Series

Ford "F" Series Truck Valve

- Ford "F" series with dual wheels
- Accuride steel 16" x 6" wheels
- Front and rear wheels
- Nickel finish
- Includes dual seal cap

\$1.50 ea.



Ascot No.	McGee No.	Description
462-02416	VS962C	Ford "F" Series Valve

Enkei Valves

- A high performance "No Show" type chrome plated valve that installs from the outside
- A rubber washer and nut are on the inside
- Fits .453" diameter hole



Ascot No.	McGee No.	Description	Price
462-06010	TR6010	3/4" Length, Standard	\$1.99
462-06020	TR6020	Bent at 45° Angle	\$1.99
462-06030	TR6030	1-1/4" Length, Standard	\$2.16
462-06040	TR6040	1-3/4" Length, Standard	\$2.16

Quality valves assure trouble free service!

Chrome Sleeve TR600HPC

- 461-01600 (TR600HP-C)
- For use in high pressure applications
- Rated to 100 PSI
- Includes core, cap and chrome sleeve
- Fits .453" rim



Chrome-Sleeve Snap-in Type Tubeless Tire Valves

\$1.29 ea

- Standard snap-in type tubeless tire valves are fitted with an attractively designed hexagon valve cap and chrome sleeve to cove the valve stem area
- Available in two lengths to fit .453" valve holes.

Ascot No.	Mfg. No.	Eff. Length	Price
461-41211	TR412SC	7/8"	\$.49 ea
461-41311	TR413SC	1-1/4"	\$.59 ea
461-41811	TR418SC	2"	\$.79 ea



Ball Foot Chucks

Ascot No.	McGee No.	Description	Price
478-00305	5499	Ball Foot Chuck. 1/4" Female Thread (Normally Closed)	\$2.79
478-00315	5567	Ball Foot Chuck With Lock-on Clip. 1/4" Female Thread (Normally Closed)	\$7.49



478-00315

478-00305



European-Style Clip-On Chucks

Ascot No.	McGee No.	Description	Price
478-02985	CH360	European-Style Clip-On Chuck. 1/4" Female Fitting. Silver Clip. (Normally Closed).	\$6.78
478-02995	CH360OP	European-Style Clip-On Chuck. 1/4" Female Fitting. Black Clip. (Normally Open).	\$6.78
478-01200	N1200	European-Style Clip-On Chuck. Serrated Shank for 1/4" I.D. Hose. Silver. (Normally Closed).	\$4.59



Made in the USA

478-01200



478-02985



McGee No.	Description	Price
6293DUSA	European-Style Clip-On Chuck, 1/4" Female Fitting. Silver Clip. (Normally Closed). (CH360)	\$7.29
6293EUSA	European-Style Clip-On Chuck. 1/4" Female Fitting. Black Clip. (Normally Open). (CH360001)	\$7.29

Lock On Air Chucks

Ascot No.	McGee No.	Description	Price
478-05265	5265SH	Lock-On Air Chuck. Specially Designed To Lock Onto The Cap Of A Standard Bore Valve Stem When The Sliding Sleeve Is Pushed To Forward Position	\$9.00



Couplers & Nipples

- Steel plated couplers with hardened steel balls and stainless steel springs
- Plugs heat-treated to reduce wear on critical mating surfaces
- Interchange with Tru-Flate 10 and 100 type series as well as units produced by other manufacturers
- Maximum working pressure 300 psi.

ASCOT

Automotive Standard Series "G"

Part No.	Description	Price
3505	1/4" Coupler Male	\$4.72
3506	1/4" Nipple Male - USA	\$1.31
3507	1/4" Nipple Female - USA	\$1.35
3515	3/8" Coupler Male	\$7.80
3517	3/8" Nipple Male	\$1.93
3518	3/8" Nipple Female	\$2.67
3512	1/2" Coupler Female - USA	\$12.35
3513	1/2" Nipple Male - USA	\$4.53
3514	1/2" Nipple Female - USA	\$4.47
513811	1/4" Nipple Male - USA	\$1.14
513911	1/4" Nipple Female - USA	\$1.00



468-05005 468-00660 468-00050 468-20495 468-05405 468-07572

Ascot No.	McGee No.	Description	Finish	Price
46805005	CAP S	Combination Cap/Sleeve for TR413	Chrome	\$1.18
46800660	660V	Standard Black Plastic Valve Cap (100)	Plastic	\$1.99

Ascot No.	Mfg. No.	Operating Pressure Range	Operating Pressure	Price
468-05405	5405V	0-200 PSI-Peaks of 300	90 PSIG	\$10.99
5405V cannot be used in aluminum TPMS items				

Ascot No.	Mfg. No.	Description	TR No.	Operating Pressure	Finish	Price
468-07572	7572V	Dome-Shaped Top & Guide (100)	VC3	0-200 PSI	Nickel Plated	\$12.99

Green Valve Caps for Nitrogen Inflated Tires



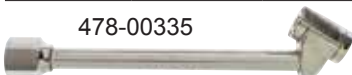
468-00207 590021 590019 46800307 468-43607

Ascot No.	McGee No.	Description	Price
46800207	46800207	Green Plastic Nitrogen Cap (100/bx)	\$.03 ea
46800307	46800307	Green Valve Oring (100/bx)	\$.03 ea
46843607	436075	High Quality Green Stamped Chrome	\$.29
--	590021	Chrome Nitrogen Valve Cap (100/box)	\$29.00
--	590019	Aluminum Nitrogen Valve Cap (100/box)	\$29.00

Use chrome caps on brass stems only and aluminum caps on aluminum stems

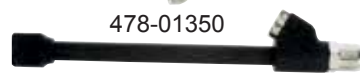
Dual Foot Air Chucks

Ascot No.	McGee No.	Description	Price
478-01350	CH350LO	Straight-On/Angled Chuck. Protective Black Epoxy Finish (Normally Closed)	\$7.59
478-00335	CH335	Angled Chuck. Plated Finish (Normally Closed)	\$4.75
478-03300	CH330LO	Straight-On/Angled Chuck. With Lock-On Threads (Normally Closed)	\$7.29
478-03301	CH330	Straight-On/Angled Chuck (Normally Closed)	\$6.73
478-03330	CH333LO	Straight-On/Angled Chuck. 14" Long (Normally Closed)	\$9.24



478-00335

478-01350



478-03300



Why do you need quality air gauges?

Keeping an eye on tire pressure is a critical part of regular inspection and maintenance.

Tire pressure is a critical function in many different ways. Underinflated (or grossly overinflated) tires don't handle safely, and if you find yourself in a "steer out of trouble" situation, improperly inflated tires can get you into a lot of trouble. Low tires heat up and can blow out, not only destroying the tire but also putting you in an accident-likely situation. Keeping tires properly inflated also makes sense from a dollars and sense perspective: Underinflated tires wear out more quickly. Overinflated tires can make the ride rough, and actually wear out suspension parts. And yes, fuel economy is really affected by tire inflation. The solution to these safety and money issues is as simple as regularly checking tire inflation, and for this you need an accurate tire pressure gauge.



PLEASE USE THIS GAUGE ACCURACY GUIDE AS A HELPFUL TOOL!



Ascot No.	McGee No.	Description	Price
477-00001	1406M	Safety Inflator Gauge. 12" Hose With Dual Foot Chuck. 10 To 120 PSI. Available 6ft, 9ft, & 12ft hose	\$39.95

M Series



E. Professional Sight Glass Truck Gauges

- Range: 10-160 PSI in 2 PSI increments
- ± 1 PSI accuracy
- High quality design
- 360-degree swivel head
- Maintain reading



Digital Hand-Held Tire Inflator*

- INFLATION RANGE: 0 - 174 PSI
- ACCURACY: $\pm .2$ PSI • 6' Hose
- Lightweight shock-resistant design
- High specification ceramic sensor
- Long life, easily replaceable battery
- Available in custom hose lengths and chuck styles
- Valve has provisions for checking air pressure during inflation
- Threaded for 1/4" male NPT hose fittings



477-10001

\$121.42!

ASCOT NO.	McGEE NO.	DESCRIPTION
477-10001	47710001	Digital Hand-Held Tire Inflator

McGee No.	Mfg. No.	Description	Price
47632920	3292C-RED	Sight Glass Master Truck Gauge - Dual Foot Chuck	\$49.95
47632921	3292D-RED	Sight Glass Master Truck Gauge - Straight Chuck	\$49.95
47632922	3292E-RED	Sight Glass Master Truck Gauge - Angle Chuck	\$49.95

* This gauge provides more accurate air pressure readings which are essential with TPMS.

Automotive Tire Gauges

476-03501
Black Plated Master
Tire Gauge



- Pencil, chrome tire gauges with nylon indicator bars
- Imprinted Gauges Available with Your Name. Call for details!

Ascot #	McGee #	Range	Type	Price
476-10105	GA105	10-50 PSI	Passenger Gauge	\$2.99
476-10115	GA115	20-120 PSI	High Pressure Gauge	\$2.89
476-10100	GA100	1-20 PSI	Low Pressure Gauge	\$3.14
476-10110	GA110	10-50 PSI	Passenger Gauge 75-340 kPa Calibrated in PSI & kPa	\$2.74
476-10125	GA125	5-45 PSI	Air/Liquid Gauge - tractor	\$3.12
476-10145	GA145	10-75 PSI	Mid-Range Gauge 70-500 kPa Calibrated in PSI & kPa	\$2.81
476-03501	3501	10-100 PSI	Master Tire Gauge & Black Angle Bend	\$16.58



Now USA made Dill! **\$3.95**
7212USA 20-120 PSI high pressure gauge

COUNTER DISPLAY

Retail Gauge Opportunity
Promote accurate tire inflation

941DIS – Counter Display with Ten
10-120 lb gauges
476-00941 **\$25.95**

7277USA **\$32.95**
Counter Display with ten USA made
gauges –10-75 PSI



Digital Pocket Gauge

Range: 0-150 PSI in .5 PSI increments
Accuracy: ±1 PSI
Large LCD display
Red backlight
Angled chuck head

476-32380
Digital Pocket
Gauge



Ascot No.	Mfg. No.	Description	Price
476-32380	3238P	Digital Pocket Gauge w/Angled Chuck 1 150 PSI	\$18.79



#MTK Pouch

\$25.95

Includes:

- 1 ea GA115 Gauge 20- 120 PSI
- 1 ea MK White Markal
- 1 ea 1246D Flip Socket 3/4-13/16 Thin Wall
- 1 ea 1291DT Flip Socket 19mm-21mm
- 1 ea 595TM Trend Depth Gauge
- 1 ea TL620 Core Tool

Truck Service Gauges



- Wide variety of service gauges to accommodate the numerous tire and wheel configurations encountered by tire service personnel
- Available in chrome plated or protective black epoxy finish as indicated
- Calibrated from 10-150 psi in 2 pound increments
- Nylon or metal indicator bars

Ascot No.	McGee No.	Gauge Type	Price
476-10135	GA135	Angle Chuck With Nylon Bar	\$8.55
476-11135	GA135S	Same As Above, Angle Chuck With Metal Bar	\$9.63
476-10155	GA155	Straight-On With 30° Reverse Chuck	\$12.79
476-10165	GA165	Same As Above, Straight-On With 30° Reverse Chuck, Black Epoxy Finish	\$9.56
476-11155	GA155S	Same As Above, Straight-On With 30° Reverse Chuck, Metal Bar	\$12.92
476-10185	GA185	Dual Foot Service Gauge With Nylon Bar, 180° Chuck, Chrome Plated	\$11.77
476-01046	7285E	Externally Adjustable Metal Bar Truck Gauge – 10-150 psi	\$13.94

Pocket Truck Gauges



Ascot No.	McGee No.	Description	Price
476-10150	GA150	Straight-On/Angled Gauge. 20-120 psi. Chrome Plated.	\$7.99
476-10160	GA160	Straight-On/Angled Gauge. 10-120 PSI. Black Baked Epoxy Protective Finish.	\$7.79
476-10130	GA130	Dual Foot Angled Pencil Gauge. 20-120 psi.	\$4.45



Now USA made
7263USA **\$9.95**

Straight-On/Angled Gauge
20-120 PSI. Black Baked Epoxy Protective Finish.

MC Series fits more U.S. vehicles than any other weight!

"MCN" Series- Wheel Protectors® Coated

The "MCN" series is the recommended weight for all applications shown below. The "MCN" meets all OEM quality specifications.

"MC" Series-Uncoated



Fits most Chrysler, GM, Ford since 1990, Fiat

We recommend that coated weights be used on all vehicles having alloy wheels.

"MCN" Coated—25 pc. box. "MC" Uncoated—50 pc. box

MC



AUDI	JAGUAR
BMW	KIA
CATERA	MITSUBISHI (see chart)
GEO	SUBARU
HYUNDAI	SUZUKI
	VOLVO
	MINI
	LAND ROVER
	SMART CAR



IAW



5 to 60 g

AUDI	From 1997
HONDA	
& ACURA	All from 1980 to 1989
MERCEDES	
VW	



Also used on many after-market alloy wheels with thin rim flanges

EN



10 to 60 g

ACURA	Most since 1990
DAEWOO	All since 1999
HONDA	All since 1989
INFINITI	All since 1990
ISUZU	All since 1997
LEXUS	All since 1990
MAZDA	Many since 1990
NISSAN	All since 1990
TOYOTA	All since 1990



FN



5 to 70 g

See chart for exceptions

Wheel Cleaner

Stop Using Expensive Wheel Cleaning Solutions

A clean wheel is critical to good stick-on wheel weight adhesive.

- Water-Based • Non-Petroleum
- Biodegradable • Non-Toxic



A Note About Today's Wheels

For environmental reasons the car manufacturers recently started using water-based paint on wheels. Unfortunately, those paints have an adverse effect on the adherence of wheel weights. The special formulation assures optimal adherence even on surfaces coated with water-based paint.

Ascot No.	Description	Price
48675032	Wheel Cleaner 32 Oz. Spray Bottle	\$9.00
48675017	Wheel Cleaner 1 Gallon Bottle	\$15.95

"TS" Series

CHEVROLET GMC - Use on full size pickup, Suburban, Yukon, Tahoe from 2000. Denali & Escalade use MCS for 2000

FORD - Expeditions from 1997 - F-100, F-150 from 1997
LINCOLN - Navigator from 1998

We recommend the use of TS series weights on all full size pickup trucks and vans equipped with steel wheels. The use of "REG" series passenger weights on thicker truck rims may cause over-stressing of clips resulting in weight failures.

1/4 oz. to 5 oz. - in 1/4 oz. increments



"I7" Series

BTLM = I7

Most popular weight for the medium-duty truck. Used on most trucks with tube type tires. 25 per box
14 & 16 oz.; 10/box.

1 oz. to 16 oz. - in 1 oz. increments



I7 Series



I9 Series



"TAL" Series Wheel Protectors® Coated Wheel Weights

A new special weight for all Alcoa and Accuride (from 1983) aluminum tubeless heavy truck wheels. The weights will fit both sides of the wheel. These new weights replace the "OS-TAL" and "DS-TAL" series. Use rim gauge RGT2 to verify correct application (either OS-TAL or DS-TAL slot).

"TAL" Coated



Disc Side

Open Side

Part. No.	Weight
TAL030	3.0 oz.
TAL040	4.0 oz.
TAL060	6.0 oz.
TAL080	8.0 oz.

CT

BTLT & I9 = CT

Used on "section" type, straight flange, tubeless wheels, Goodyear Super Single; Budd 7.50" and 8.25" wheels with Firestone or Goodyear discs. Uncoated.

2 oz. to 16 oz. - in 2 oz. increments



3358HD
486-33581









3358
486-33580



Scraper 71510
486-071510

- 486-71510** 71510 Adhesive Wheel Weight Super Scraper Removes emblems, body side moldings and stick-on wheel weights. **\$14.95**
- 486-33580** 3358 KD/Bada Premium Weight Tool - Ideal for all weights, including coated..... **\$24.95**
- 486-33581** Heavy Duty version 3358HD..... **\$28.95**

	7026	.25 oz.	Low Profile Premium Tape		48 strips/box	Width: 3/4" Depth: 1/8"	Lead 576 seg/box	Special! \$28.95
 Black	200576FE BLK	.25 oz.	Low Profile Premium Tape	3 oz./strip	48 strips/box	Width: 3/4" Depth: 1/8"	Steel 576 Seg/box	Special! \$29.95
 White	7026FEW	.25 oz.	Tape-On-Top Low Profile Premium Tape White Polycoat	2 oz./strip	30 strips/box	Width: 3/4" Depth: 1/8"	Steel 240 Seg/box	Special! \$27.95
 Bracket Not Included	7026FER	.25 oz.	Bulk Roll Premium Tape Polycoat	Bulk Roll	1 strip/box	Width: 3/4" Depth: 1/8"	Steel 700 seg/box	Special! \$49.95
	200576FE	.25 oz.	Low Profile Coated		52 strips/box	Width: 3/4" Depth: 1/8"	Steel 576 pcs	Special! \$22.95
 Plombco Style	WR31252CW	.25 oz.	Cold Weather Tape		52 strips/box	Width: 3/4" Depth: 1/8"	Lead 624 pcs	\$57.94

Truck Tape-On Weights

	CL6	1 oz.	Standard Profile Quick Tab with Premium Tape	30 strips/box	width 3/4"	Lead 180 pcs	\$57.00
	CL12	2 oz.	Standard Profile Quick Tab with Premium Tape	8 strips/box	width 1-1/4"	Lead 48 pcs.	\$37.00
	300360	.50 oz.	Standard Profile Quick Tab with Premium Tape	30 strips/box	Width: 1"	Lead 360 pcs	\$54.95
	300336FE	.50 oz.	Standard Profile Quick Tab with Premium Tape	28 strips/box	Width: 1"	Steel 366 pcs	\$29.95

Tape-A-Weight Roll Dispenser

This easy to use Tape-A-Weight Roll dispenser holds two full rolls of weights and is designed for use with all BADA bulk Tape-A-Weight Rolls, including 5, 10, and 20 lb rolls. Plus it reduces waste, loads easily, and keeps your weights right at the balancer where you need them.

PN: 5310025

\$149.95


Premium Bulk Tape Rolls Poly Coated - Double Tab Tape!

7525FER20 - low profile roll of 1280 pcs, 1/4 oz
20 lbs. - **\$83.95**

.25 oz Poly-Coated Speed Strip™



420FE - 640 pcs, 1/2 oz
20 lbs. - **\$89.95**

.5 oz Poly-Coated Speed Strip™



Professional Wheel Weight Kit

KIT2250
\$949.95

This kit contains a wide assortment of seven styles of polyester-coated wheel weights plus regular weights for steel wheels. The pre-labeled, color-coded bins are supported on a free standing floor display with descriptive header. This kit includes 74 pre-labeled, color-coded bins, over 2000 wheel weights, coated wheel weight installation/removal tool, application chart, and alloy wheel gauge. The Kit 2250

Professional covers of 95% of today's balancing needs.

Contents

2100 wheel weights, 50 of each size for regular weights (REG), 25 of each for polyester-coated weights, installation/removal tool (WR 305-25 PC), application chart, application hand gauge, header, 74 plastic bins, 1 metal floor stand.





McGee Company
1140 South Jason Street
Denver CO 80223

PRSRT STD
U.S. POSTAGE
PAID
DENVER, CO
PERMIT NO 1772

ATTN: ROUTE TO SERVICE DEPARTMENT

©2017 McGee Company, Denver, Colorado

McGeeCompany.com • 1-800-525-8888

COATS • HUNTER • CEMB

Changers, Balancers, Lathes

HUNTER • CEMB • ROTARY

Alignment Equipment

ROTARY • NORCO • RPG

Lifts, Hydraulics, Jacks

QUINCY • CHAMPION • CP

Air Compressors

GRACO • RHINO • OIL STORAGE

Lubrication



Direct-Lift®

AMERICAN
#1 HOBBYIST LIFT

*See inside for specials on
Rotary and Direct Lifts!*

PRO9F Two Post Lift
9,000 lbs. Capacity

\$2,095.00

- Ideal for low ceilings in shops and garages—overall column height of 9'3".
- Comes with FREE truck adapters and mounting hardware
- The PRO9F is a low volume, hobbyist lift.

McGeeCompany.com Online Resources

- Product breakdowns
- SDS
- TPMS charts
 - Schrader
 - Dill
- Used equipment
- Tutorial videos
- Online shopping
 - Build shopping lists
 - Review previous orders
 - See detailed photos
 - View invoices

**LUBRICATION SPECIALISTS
CALL TODAY ~ 800-525-8888**

30+ YEARS EXPERIENCE!



**Fireball
Pumps
Air
Diaphragm
Pumps**



**Enclosed and Open Reels
Lightweight,
Electronic Meters**



CEMB

C212 HD - Truck Balancer
\$8950 Delivered

- Fully automatic cycle with braking
- Includes all adapters from passenger to heavy duty truck
- Electro-pneumatic stationary brake
- Automatic distance and diameter input
- Shows static and dynamic unbalance
- Self-diagnosis and self-calibrating
- Built in pneumatic tire lift

