

COATS® Balancing Solutions Application Chart

COATS, Inc. • Hennessy Industries • 1601 J.P. Hennessy Drive, LaVergne, TN 37086-3565 • (800) 688-6359 • (615) 641-7533 • (615) 641-5104 FAX • www.Hennessy-Ind.com

| Pin-Plate™ | Make/Model | Pin-Plate | Fixed Finger Plate | | Bolt Circle | Center Hole | | Centering Cone Part No. | | Special Adapter P/N • Comments | |
|--|---|-----------|--------------------|------------|-------------|---------------------|-----------------|-------------------------|---------|--------------------------------|------|
| | | | 28MM | 40MM | | MM | Inches | 28MM | 40MM | 28MM | 40MM |
| | | | | | | | | | | | |
| Balancing Solutions | Acura | | | | | | | | | | |
| | Integra 1986-2001 | f.p. 1 | ffp1a | ffp1b | 4x100MM | 56.00 | 2.20 | 8110410/8112167 | 8112098 | | |
| | CL 1997-2001; EL 1997-2001; Legend 1986-1990 | f.p. 1 | ffp1a | ffp1b | 4x4.50-in. | 64.00 | 2.52 | 8110411/8112168 | 8112099 | | |
| | Legend 1991-1995; RL 1996-2001; TL 1996-2001 | f.p. 3 | ffp4a | ffp4b | 5x4.50-in. | 64.00 | 2.52 | 8110411/8112168 | 8112099 | | |
| | SLX 1996-1999 | f.p. 4 | | | 6x5.50-in. | 70.00 | 2.76 | 8110411/8112168 | 8112099 | | |
| | Audi | | | | | | | | | | |
| | 100 1989-1991; 4000 1986-1987; 5000 1986-1988; 80 1988-1992; 90 1988-1995; Cabriolet 1994-1998; COUPE GT 1986-1987; Coupe Quattro 1990-1991 | f.p. 1 | ffp1a | ffp1b | 4x108MM | 57.00 | 2.24 | 8110410/8112167 | 8112098 | | |
| | All others except TT | f.p. 2 | ffp6a | ffp6b | 5x112MM | 57.00 | 2.24 | 8110410/8112167 | 8112098 | | |
| | TT 2000-2001 | f.p. 3 | ffp3a | ffp3b | 5x100MM | | | | | | |
| | BMW | | | | | | | | | | |
| | 318i 1991-1992; 325i 1987-1993; M3 1987-1991 | f.p. 1 | ffp1a | ffp1b | 4x100MM | 57.00 | 2.24 | 8110410/8112167- | 8112098 | | |
| | All others | f.p. 2 | ffp7a | ffp7b | 5x120MM | 72.50 | 2.85 | 8110411/8112168 | 8112099 | | |
| | Buick | | | | | | | | | | |
| | LeSabre; Park Avenue; Reatta; | f.p. 2 | ffp5a | ffp5b | 5x115MM | 70.30 | 2.76 | 8110411/8112168 | 8112099 | | |
| | Century; Electra; Regal | f.p. 2 | ffp5a | ffp5b | 5x115MM | 70.23 | 2.76 | 8110411/8112168 | 8112099 | | |
| Century 1986-1989; LeSabre 1985-1988; | f.p. 3 | ffp3a | ffp3b | 5x100MM | | | | | | | |
| Skylark FWD; Skyhawk FWD; Park Avenue | f.p. 3 | ffp3a | ffp3b | 5x100MM | 57.10 | 2.25 | 8110410/8112167 | 8112098 | | | |
| Mid Size RWD (Grand National) | f.p. 3 | ffp5a | ffp5b | 5x4.75-in. | | | | | | | |
| Full Size RWD (Electra, LaSabre, Roadmaster) | f.p. 3 | ffp7a | ffp7b | 5x5.00-in. | 77.70 | 3.06 | 8110412/8112169 | 8112100 | | | |
| Cadillac | | | | | | | | | | | |
| Allente; DeVille; Eldorado 1986; Fleetwood; Seville 1986 | f.p. 2 | ffp5a | ffp5b | 5x115MM | 70.23 | 2.76 | 8110411/8112168 | 8112099 | | | |
| Cimaron; Catera | f.p. 3 | ffp3a | ffp3b | 5x100MM | 57.1/65.1 | 2.24803/ 2.56299 | 8110410/8112167 | 8112098 | | | |
| Eldorado; Seville 1975-1976 & 1980-1985 | f.p. 3 | ffp5a | ffp5b | 5x4.75-in. | 70.30 | 2.76 | 8110411/8112168 | 8112099 | | | |
| Calais; Escalade; Fleetwood Brougham; Seville 1977-1979 | f.p. 3 | ffp7a | ffp7b | 5x5.00-in. | 77.75 | 3.10 | 8110412/8112169 | 8112100 | | | |
| Chevrolet/ Geo | | | | | | | | | | | |
| Chevette; Nova 1985-1987; Prizm; Spectrum; Storm | f.p. 1 | ffp1a | ffp1b | 4x100MM | 56.50 | 2.22 | 8110410/8112167 | 8112098 | | | |
| Chevette; Spectrum | f.p. 1 | ffp1a | ffp1b | 4x100MM | 57.10 | 2.25 | 8110411/8112168 | 8112099 | | | |
| Metro; Sprint; | f.p. 1 | ffp2a | ffp2b | 4x4.50-in. | 60.00 | 2.36 | 8110411/8112168 | 8112099 | | | |
| Tracker | f.p. 1 | | | 5x5.50-in. | 108.70 | 4.28 | 8308095 | 8112101 | | | |
| Celebrity; Impala 2000-2001; Lumina APV; Lumina 1990-2001 | f.p. 2 | ffp5a | ffp5b | 5x115MM | 70.23 | 2.76 | 8110411/8112168 | 8112099 | | | |
| Beretta 1987-1996; Cavalier 1986-2001; Citation; Corsica 1987-1996 | f.p. 3 | ffp3a | ffp3b | 5x100MM | 57.10 | 2.25 | 8110410/8112167 | 8112098 | | | |
| Bel Air; Biscayne; Blazer; Caprice; Camero; Chevelle; Corvette; | f.p. 3 | ffp5a | ffp5b | 5x4.75-in. | 70.50 | 2.78 | 8110411/8112168 | 8112099 | | | |
| El Camino; Impala, Malibu, Monte Carlo; S-10; S-15 | | | | | | | | | | | |
| Bel Air; Caprice; Impala (Heavy Duty Suspension); Astro; C-10/1500; E-10; G-10/1500; Tahoe | f.p. 3 | ffp7a | ffp7b | 5x5.00-in. | 77.70 | 3.06 | 8110412/8112169 | 8112100 | | | |



Balancing Solutions Application Chart

| Pin-Plate™ | Make/Model | Pin-Plate | Fixed Finger Plate | | Bolt Circle | Center Hole | | Centering Cone Part No. | | Special Adapter P/N • Comments | |
|------------|--|-----------------------|--------------------|-------|-------------|-------------|--------|-----------------------------|---------------------|---|---------|
| | | | 28MM | 40MM | | MM | Inches | 28MM | 40MM | 28MM | 40MM |
| | | Chevrolet/ Geo | | | | | | | | | |
| | Blazer; C-2500; K-1500/2500; Tahoe 4x4 | f.p. 4 | | | 6x5.50-in. | | | | | 8112764 | 8112766 |
| | C-3500; K-3500 | f.p. 4 | | | 8x6.50-in. | | | | | 8183850 | 8183849 |
| | Chrysler | | | | | | | | | | |
| | Laser 1986; LeBaron; Medallion; Summit; New Yorker 1981-1985 | f.p. 1 | ffp1a | ffp1b | 4x100MM | 57.10 | 2.25 | 8110411/8112168 | 8112099 | | |
| | LeBaron | f.p. 1 | ffp1a | ffp1b | 4x100MM | 56.00 | 2.20 | 8110410/8112167 | 8112098 | | |
| | Cirrus 1995-2000; Sebring 1996-2001; Stratus 1995-2001; | f.p. 3 | ffp3a | ffp3b | 5x100MM | 57.10 | 2.25 | 8110411/8112168 | 8112099 | | |
| | Imperial 1990-1991; LeBaron 1986-1995; New Yorker 1986-1992 | f.p. 3 | ffp3a | ffp3b | 5x100MM | 56.99 | 2.24 | 8110410/8112167 | 8112098 | | |
| | Premier | f.p. 3 | ffp3a | ffp3b | 5x108MM | | | | | | |
| | 300; 300M; American Motors Passenger Cars; Concorde; Cordoba; LHS; Newport; New Yorker 1994-1996 FWD; Talon; Town & Country; Vision; Voyager | f.p. 3 | ffp4a | ffp4b | 5x4.50-in. | 71.40 | 2.81 | 8110411/8112168 | 8112099 | 8112420 If equipped with LH "Stepped Center Hole" Alloy Wheels | 8112421 |
| | Imperial | f.p. 3 | | | 5x5.50-in. | | | | | | |
| | Viper | f.p. 4 | | | 6x4.50-in. | | | | | | |
| | Daewoo | | | | | | | | | | |
| | Lanos; Nubira | f.p. 1 | ffp1a | ffp1b | 4x100MM | 56.60 | 1.96 | 8110410/8112167 | 8112098 | | |
| | Leganza | f.p. 3 | ffp4a | ffp4b | 5x4.50-in. | 56.60 | 1.96 | 8110410/8112167 | 8112098 | | |
| | Dodge | | | | | | | | | | |
| | Aries; Caravan; Lancer 1985-1989; Dynasty | f.p. 1 | ffp1a | ffp1b | 4x100MM | 57.10 | 2.25 | 8110411/8112168 | 8112099 | | |
| | Charger; Daytona; Neon 1995-1996; Omni 1986-1987; Prowler; PT Cruiser | f.p. 1 | ffp1a | ffp1b | 4x100MM | 57.10 | 2.25 | 8110411/8112168 | 8112099 | | |
| | Challenger; Charger; Colt; Coronet; Monaco; Magnum; Polara | f.p. 1 | ffp2a | ffp2b | 4x4.50-in. | 74.93 | 2.95 | 8110411/8112168 | 8112099 | | |
| | Ram 1500; Ramcharger | f.p. 1 | | | 5x5.50-in. | 89.81 | 3.54 | 8110412/8112169/ 8111688 | 8112100/ 8112384 | 8112760 | 8112762 |
| | Aries; Charger; Caravan; Daytona Turbo; Lancer Turbo; Shadow; Spirit | f.p. 3 | ffp3a | ffp3b | 5x100MM | 56.99 | 2.24 | 8110410/8112167 | 8112098 | | |
| | Stratus; Rampage; Neon | f.p. 3 | ffp3a | ffp3b | 5x100MM | 57.10 | 2.25 | 8110411/8112168 | 8112099 | | |
| | B150; B250; Avenger; Aspen; Challenger; Charger; Coronet; Dakota 19987-1991; Dart; Demon; Grand Caravan; Magnum; Polara; Stealth; Swinger | f.p. 3 | ffp4a | ffp4b | 5x4.50-in. | 83.82 | 3.30 | 8110412/8112169/ 8111688 | 8112100/ 8112384 | | |
| | Caravan AWD; Diplomat; B 100; D 100 | f.p. 3 | ffp4a | ffp4b | 5x4.50-in. | 71.54 | 2.82 | 8110411/8112168 | 8112099 | 8112420 If equipped with LH "Stepped Center Hole" Alloy Wheels | 8112421 |
| | Dakota; Durango | f.p. 4 | | | 6x4.50-in. | 83.82 | 3.30 | 8110412/8112169/ 8111688 | 8112100/ 8112384 | | |
| | D50; Ram 50; Raider | f.p. 4 | | | 6x5.50-in. | 108.70 | 4.28 | 8308095 | 8112101 | 8112764 | 8112766 |
| | D200; D300; D350; P200; W250; W300 | f.p. 4 | | | 8x6.50-in. | | | | | 8183850 | 8183849 |
| | Ford | | | | | | | | | | |
| | Aspire; Escort 1991-2001; Lazer | f.p. 1 | ffp1a | ffp1b | 4x100MM | 54.10 | 2.13 | 8110410/8112167 | 8112098 | | |
| | Cougar; Fiesta; Focus; Granada; Puma; Scorpio; Sierra; Taurus; | f.p. 1 | ffp1a | ffp1b | 4x108MM | | | | | | |
| | Contour | f.p. 2 | ffp1a | ffp1b | 4x108MM | 54.10 | 2.13 | 8110410/8112167 | 8112098 | | |
| | Fairmont 1978-1983 | f.p. 3 | ffp1a | ffp1b | 4x108MM | 74.93 | 2.95 | 8110412/8112169 | 8112100 | | |

COATS Balancing Solutions



Balancing Solutions Application Chart

| Pin-Plate™ | Make/Model | Pin-Plate | Fixed Finger Plate | | Bolt Circle | Center Hole | | Centering Cone Part No. | | Special Adapter P/N • Comments | |
|--|--|-----------|--------------------|------------|-------------|---------------------|-----------------------------|----------------------------|---|--|---------|
| | | | 28MM | 40MM | | MM | Inches | 28MM | 40MM | 28MM | 40MM |
| | | | | | | | | | | | |
| Balancing Solutions | Ford | | | | | | | | | | |
| | Tempo;Thunderbird 1985-1988 | f.p. 1 | ffp1a | ffp2b | 4x108MM | 63.3/63.5 | 2.49212/2.5 | 8110411/8112168 | 8112099 | | |
| | Econovan; Festiva | f.p. 1 | ffp2a | ffp2b | 4x4.50-in. | 54.00 | 2.13 | 8110410/8112167 | 8112098 | | |
| | Bronco 2/4WD | f.p. 1 | | | 5x5.50-in. | 108.70 | 4.28 | 8308095 | 8112101 | 8112760 | 8112762 |
| | Bronco 4x4 | f.p. 1 | | | 5x5.50-in. | 86.81 | 3.42 | 8110412/8112169 8111688 | 8112100 8112384 | 8112760 | 8112762 |
| | Club Wagon; F150 1985-1996 | | | | | | | | | | |
| | Galaxie, Granada; Scorpio | f.p. 2 | ffp6a | ffp6b | 5x112MM | | | | | | |
| | Taurus SHO; Thunderbird 1990-1991; Windstar | f.p. 3 | ffp4a | ffp4b | 5x4.25-in. | 63.88/63.5 | 2.51496/2.5 | 8110411/8112168 | 8112099 | | |
| | Explorer; Fairmont; Galaxie; LTD; Probe; Ranchero; | f.p. 3 | ffp4a | ffp4b | 5x4.50-in. | | | | | | |
| | Bronco II, F100 2WD w/power brakes 1970-1980; | f.p. 4 | ffp4a | ffp4b | 5x4.50-in. | 83.82 | 3.30 | 8110412/8112169 8111688 | 8112100 8112384 | | |
| | Ranger 2/4WD 1982-1997 | | | | | | | | | | |
| | Crown Victoria; Mustang 1994-2001 | f.p. 4 | ffp4a | ffp4b | 5x4.50-in. | 70.54 | 2.77 | 8110411/8112168 | 8112099 | 8112420 If equipped with LH "Stepped Center Hole" Alloy Wheels | 8112421 |
| | Aerostar | f.p. 4 | ffp4a | ffp4b | 5x4.50-in. | 64.14 | 2.53 | 8110411/8112168 | 8112099 | | |
| | Falcon | f.p. 4 | ffp4a | ffp4b | 5x4.50-in. | 74.93 | 2.95 | 8110411/8112168 | 8112099 | | |
| | Aerostar; Bronco II; Mustang 1994-2001; Ranchero; | f.p. 3 | ffp4a | ffp4b | 5x4.50-in. | 63.88 | 2.51 | 8110411/8112168 | 8112099 | | |
| Explorer; Probe | f.p. 3 | ffp4a | ffp4b | 5x4.50-in. | 86.9/59.5 | 3.42125/ 2.34251 | 8308095/8110411/ 8112168 | 8112101/ 8112099 | | | |
| Expedition; F150 1997-2001 | f.p. 3 | | | 5x135MM | 83.06 | 3.27 | 8110412/8112169 8111688 | 8112100 8112384 | 8112880 | 8112879 | |
| F250 1983-1997; F350 1985-1997 | f.p. 3 | | | 8x6.50-in. | 130.81 | 5.15 | 8111559 | 8112385 | 8183850/ 1999 & up offset dual wheels 8113041 | 8183849/ 1999 & up offset dual wheels 8113042 | |
| GMC | | | | | | | | | | | |
| Jimmy; S-15; Sonoma | f.p. 3 | ffp5a | ffp5b | 5x4.75-in. | 77.75 | 3.06 | 8110412/8112169 | 8112100 | | | |
| C-1500; Denali; Safari; Suburban; Yukon | f.p. 3 | ffp7a | ffp7b | 5x5.00-in. | 77.75 | 3.06 | 8110412/8112169 | 8112100 | | | |
| C-2500; K-2500 | f.p. 4 | | | 6x5.50-in. | | | | | 8112764 | 8112766 | |
| C-3500; K-3500 | f.p. 4 | | | 8x6.50-in. | | | | | 8183850/ 1999 & up offset dual wheels 8113041 | 8183849/ 1999 & up offset dual wheels 8113042 | |
| Honda | | | | | | | | | | | |
| CRX S1; Del Sol S1; Prelude S1 1979-1991 | f.p. 1 | ffp1a | ffp1b | 4x100MM | 56.13 | 2.21 | 8110410/8112167 | 8112098 | | | |
| Quintet; S2000 | f.p. 2 | ffp1a | ffp1b | 4x100MM | | | | | | | |
| Accord 1982-1989 | f.p. 3 | ffp1a | ffp1b | 4x100MM | 64.14 | 2.53 | 8110411/8112168 | 8112099 | | | |
| Civic | f.p. 1 | ffp1a | ffp1b | 4x100MM | 56.00 | 2.20 | 8110410/8112167 | 8112098 | | | |
| CR-V 1997-2001; | f.p. 1 | ffp4a | ffp4b | 5x4.50-in. | 70.23 | 2.76 | 8110411/8112168 | 8112099 | | | |
| Accord 1990-2001; Prelude 1992-2001; Odyssey | f.p. 3 | ffp4a | ffp4b | 5x4.50-in. | | | | | | | |
| Prelude 1992-2001 | f.p. 4 | ffp4a | ffp4b | 5x4.50-in. | 64.14 | 2.53 | 8110411/8112168 | 8112099 | | | |
| Passport | f.p. 4 | | | 6x5.50-in. | 99.82 | 3.93 | 8111688 | 8112384 | | | |



Balancing Solutions Application Chart

| Pin-Plate™ | Make/Model | Pin-Plate | Fixed Finger Plate | | Bolt Circle | Center Hole | | Centering Cone Part No. | | Special Adapter P/N • Comments | |
|--|--|-----------|--------------------|------------|-------------|-------------|----------------------------|-------------------------|---------|--------------------------------|------|
| | | | 28MM | 40MM | | MM | Inches | 28MM | 40MM | 28MM | 40MM |
| | | | | | | | | | | | |
| Balancing Solutions | Hyundai | | | | | | | | | | |
| | Accent; Eleantra; Excel; Pony; Scoup; Sonata; Stellar; Tiburon | f.p. 1 | ffp2a | ffp2b | 4x4.50-in. | 67.00 | 2.64 | 8110411/8112168 | 8112099 | | |
| | Infiniti | | | | | | | | | | |
| | G20; M30; Q45 | f.p. 1 | ffp2a | ffp2b | 4x4.50-in. | 66.00 | 2.60 | 8110411/8112168 | 8112099 | | |
| | I30; J30 | f.p. 3 | ffp4a | ffp4b | 5x4.50-in. | 66.00 | 2.60 | 8110411/8112168 | 8112099 | | |
| | QX4 | f.p. 4 | | | 6x5.50-in. | 99.95 | 3.94 | 8111688 | 8112384 | | |
| | Isuzu | | | | | | | | | | |
| | I-Mark; Impulse | f.p. 1 | ffp1a | ffp1b | 4x100MM | 54.00 | 2.13 | 8110410/8112167 | 8112098 | | |
| | Stylus | f.p. 1 | ffp1a | ffp1b | 4x100MM | 56.52 | 2.23 | 8110410/8112167 | 8112098 | | |
| | Optima | f.p. 2 | ffp1a | ffp1b | 4x100MM | | | | | | |
| | Oasis | f.p. 3 | ffp4a | ffp4b | 5x4.50-in. | 64.00 | 2.52 | 8110411/8112168 | 8112099 | | |
| | Hombre | f.p. 3 | ffp5a | ffp5b | 5x4.75-in. | 70.10 | 2.76 | 8110411/8112168 | 8112099 | | |
| | Pup; Rodeo; Vehicross | f.p. 4 | | | 6x5.50-in. | | | | | | |
| | Amigo; Trooper | f.p. 4 | | | 6x5.50-in. | 101/105 | 3.9767/ 4.15019 | 8308095 | 8112101 | | |
| | Jaguar | | | | | | | | | | |
| | S | f.p. 3 | ffp3a | ffp3b | 5x108MM | 63.40 | 2.50 | 8110411/8112168 | 8112099 | | |
| | All others | f.p. 3 | ffp5a | ffp5b | 5x4.75-in. | | | | | | |
| | Jeep | | | | | | | | | | |
| | Grand Waggoner; Jeep CJ; Jeepster; Scambler | f.p. 1 | | | 5x5.50-in. | | | | | | |
| | Cherokee 1984-2001; Wrangler | f.p. 3 | ffp4a | ffp4b | 5x4.50-in. | 71.54 | 2.82 | 8110411/8112168 | 8112099 | | |
| Commanche; Wagoneer | f.p. 3 | ffp4a | ffp4b | 5x4.50-in. | | | | | | | |
| Cherokee through 1983; Commando; | f.p. 4 | | | 6x5.50-in. | 108.70 | 4.28 | 8111688 | 8112384 | | | |
| J1; Grand Wagoneer | f.p. 4 | | | 6x5.50-in. | | | | | | | |
| J-20 | f.p. 4 | | | 8x6.50-in. | | | | | | | |
| Kia | | | | | | | | | | | |
| Rio; Sephia; Spectra | f.p. 1 | ffp1a | ffp1b | 4x100MM | 56.00 | 2.20 | 8110410/8112167 | 8112098 | | | |
| Sportage | f.p. 1 | | | 5x5.50-in. | 94.70 | 3.73 | 8111688 | 8112384 | | | |
| Lexus | | | | | | | | | | | |
| ES250 | f.p. 3 | ffp3a | ffp3b | 5x100MM | 54.10 | 2.13 | 8110410/8112167 | 8112098 | | | |
| IS300; LS430; | f.p. 2 | ffp4a | ffp4b | 5x4.50-in. | | | | | | | |
| ES300; GS300; GS400; SC Series | f.p. 3 | ffp4a | ffp4b | 5x4.50-in. | 60.07 | 2.36 | 8110411/8112168 | 8112099 | | | |
| LS400 | f.p. 3 | ffp4a | ffp4b | 5x4.50-in. | 60.00 | 2.36 | 8110411/8112168 | 8112099 | | | |
| LX450 | f.p. 4 | | | 6x5.50-in. | 106.90 | 4.21 | 8111688 | 8112384 | | | |
| Lincoln | | | | | | | | | | | |
| Continental 1988-2001; Mark VIII | f.p. 3 | ffp3a | ffp3b | 5x108MM | 63.40 | 2.50 | 8110411/8112168 | 8112099 | | | |
| Mark VII; Towncar; Versailles | f.p. 3 | ffp4a | ffp4b | 5x4.50-in. | 70.50 | 2.78 | 8110411/8112168 | 8112099 | | | |
| Navigator | f.p. 3 | | | 5x135MM | 86.80 | 3.42 | 8110412/8112169 8111688 | 8112100 8112384 | | | |
| Mazda | | | | | | | | | | | |
| 323 1990-1995; MX3, MX5; Miata; Protégé | f.p. 1 | ffp1a | ffp1b | 4x100MM | 54.00 | 2.13 | 8110410/8112167 | 8112098 | | | |
| 323 1986-1989; 626 1986-1987; GLC; RX7 1984-1986 | f.p. 1 | ffp2a | ffp2b | 4x4.50-in. | 59.50 | 2.34 | 8110411/8112168 | 8112099 | | | |



Balancing Solutions Application Chart

| Pin-Plate™ | Make/Model | Pin-Plate | Fixed Finger Plate | | Bolt Circle | Center Hole | | Centering Cone Part No. | | Special Adapter P/N • Comments | |
|------------|---|--------------|--------------------|-------|-------------|-------------|-------------------|----------------------------|--------------------|--------------------------------|------|
| | | | 28MM | 40MM | | MM | Inches | 28MM | 40MM | 28MM | 40MM |
| | | Mazda | | | | | | | | | |
| | B2500; B3000; B4000;RX7 1987-1995; Tribute | f.p. 3 | ffp4a | ffp4b | 5x4.50-in. | | | | | | |
| | 626 1988-2001; MX6 | f.p. 4 | ffp4a | ffp4b | 5x4.50-in. | 59.44 | 2.34 | 8110411/8112168 | 8112099 | | |
| | 929 | f.p. 3 | ffp4a | ffp4b | 5x4.50-in. | 67.00 | 2.64 | 8110411/8112168 | 8112099 | | |
| | B2300 | f.p. 3 | ffp4a | ffp4b | 5x4.50-in. | 70.54 | 2.78 | 8110411/8112168 | 8112099 | | |
| | Millenia; MPV | f.p. 3 | ffp4a | ffp4b | 5x4.50-in. | 67.15 | 2.64 | 8110411/8112168 | 8112099 | | |
| | Navaho | f.p. 3 | ffp4a | ffp4b | 5x4.50-in. | 82.83 | 3.30 | 8110412/8112169 8111688 | 8112100 8112384 | | |
| | B2200; B2600 | f.p. 4 | | | 6x5.50-in. | 108.70 | 4.28 | 8111688 | 8112384 | | |
| | Mercedes Benz | | | | | | | | | | |
| | 190; 260D; 300D; 3000E; 300SL; 350; 400; 420; 500; 560; 600; C Class; CL Class; CLK; E Class; ML Series; S Class; SLK | f.p. 2 | ffp6a | ffp6b | 5x112MM | 66.50 | 2.62 | 8110411/8112168 | 8112099 | | |
| | Others | f.p. 2 | ffp6a | ffp6b | 5x130MM | | | | | | |
| | Mercury | | | | | | | | | | |
| | Tracer 1991-2001 | f.p. 1 | ffp1a | ffp1b | 4x100MM | | | | | | |
| | Cougar1980-1988; Lynx; Monarch 1979-1988; Merkur; Montego | f.p. 1 | ffp1a | ffp1b | 4x108MM | | | | | | |
| | Bobcat;Marquis; Zephyr; Capri1971-1990; | f.p. 2 | ffp1a | ffp1b | 4x108MM | 74.93 | 2.95 | 8110411/8112168 | 8112099 | | |
| | Topaz | f.p. 1 | ffp1a | ffp1b | 4x108MM | 63.50 | 2.50 | 8110411/8112168 | 8112099 | | |
| | Capri 1991-1993; Tracer 1987-1990 | f.p. 1 | ffp2a | ffp2b | 4x4.50-in. | 59.94/59.1 | 2.3598/ 2.3267 | 8110411/8112168 | 8112099 | | |
| | Scorpio | f.p. 2 | ffp6a | ffp6b | 5x112MM | 63.30 | 2.49 | 8110411/8112168 | 8112099 | | |
| | Cougar 1989-2001; Sable | f.p. 3 | ffp6a | ffp6b | 5x4.25-in. | 63.50 | 2.50 | 8110411/8112168 | 8112099 | | |
| | Cyclone 1979-1987; Marauder; Meteor; Montclair | f.p. 3 | ffp4a | ffp4b | 5x4.50-in. | | | | | | |
| | Comet | f.p. 4 | ffp4a | ffp4b | 5x4.50-in. | 82.83 | 3.30 | 8110412/8112169 8111688 | 8112100 8112384 | | |
| | Grand Marquis; Mountaineer | f.p. 3 | ffp4a | ffp4b | 5x4.50-in. | 70.54 | 2.78 | 8110411/8112168 | 8112099 | | |
| | Mitsubishi | | | | | | | | | | |
| | Mirage 1993-2001 | f.p. 1 | ffp1a | ffp1b | 4x100MM | 56.13 | 2.21 | 8110410/8112167 | 8112098 | | |
| | Mirage 1986-1992; Precis Sigma; Starion; | f.p. 1 | ffp2a | ffp2b | 4x4.50-in. | | | | | | |
| | Expo; | f.p. 2 | ffp2a | ffp2b | 4x4.50-in. | 67.10 | 2.64 | 8110411/8112168 | 8112099 | | |
| | Cordia; Galant; Tredia | f.p. 1 | ffp2a | ffp2b | 4x4.50-in. | 67.00 | 2.64 | 8110411/8112168 | 8112099 | | |
| | 3000GT; Starion | f.p. 3 | ffp4a | ffp4b | 5x4.50-in. | | | | | | |
| | Eclipse | f.p. 3 | ffp4a | ffp4b | 5x4.50-in. | 67.00 | 2.64 | 8110411/8112168 | 8112099 | | |
| | Diamante | f.p. 4 | | | 6x5.50-in. | | | | | | |
| | Montero; Pick Up Trucks | | | | 6x5.50-in. | 108.70 | 4.28 | 8111688 | 8112384 | | |
| | Nissan/ Datsun | | | | | | | | | | |
| | 200SX 1995-1998 | f.p. 1 | ffp1a | ffp1b | 4x100MM | | | | | | |
| | 100NX; Pulsar; Sentra | f.p. 1 | ffp1a | ffp1b | 4x100MM | 59.00 | 2.32 | 8110411/8112168 | 8112099 | | |
| | 200SX 1986-1988; 240SX; 300ZX; Altima; Axxess; Maxima; Micra; Pulsar 1985-1986; Sentra 1985-1986, 2000-2001; Stanza | f.p. 1 | ffp2a | ffp2b | 4x4.50-in. | | | | | | |
| | 240SX; Altima; Stanza | f.p. 2 | ffp2a | ffp2b | 4x4.50-in. | 66.04 | 2.60 | 8110411/8112168 | 8112099 | | |
| | Sentra 1985-1986,2000-2001 | f.p. 3 | ffp2a | ffp2b | 4x4.50-in. | 59.21 | 2.33 | 8110411/8112168 | 8112099 | | |

COATS Balancing Solutions



Balancing Solutions Application Chart

| Pin-Plate™ | Make/Model | Pin-Plate | Fixed Finger Plate | | Bolt Circle | Center Hole | | Centering Cone Part No. | | Special Adapter P/N • Comments | |
|---|--|-----------|--------------------|------------|-------------|--------------------|-----------------------------|---|---------------------------------|---|------|
| | | | 28MM | 40MM | | MM | Inches | 28MM | 40MM | 28MM | 40MM |
| | | | | | | | | | | | |
| COATS® Balancing Solutions | Nissan/ Datsun | | | | | | | | | | |
| | 200SX 1986-1988; Micra; Pulsar 1985-1986; | f.p. 1 | ffp2a | ffp2b | 4x4.50-in. | 66.00 | 2.60 | 8110411/8112168 | 8112099 | | |
| | 240SX; | f.p. 3 | ffp4a | ffp4b | 5x4.50-in. | 66.04 | 2.60 | 8110411/8112168 | 8112099 | | |
| | 300ZX; GC22; Maxima; Quest | f.p. 4 | ffp4a | ffp4b | 5x4.50-in. | | | | | | |
| | Pick Up; Xterra | f.p. 4 | | | 6x5.50-in. | 108.70 | 4.28 | 8111688 | 8112384 | | |
| | Pathfinder | f.p. 4 | | | 6x5.50-in. | 105.00 | 4.13 | 8308095 | 8112101 | | |
| | Oldsmobile | | | | | | | | | | |
| | Allero; Toronado 1986-1992 | f.p. 2 | ffp5a | ffp5b | 5x115MM | 70.23 | 2.76 | 8110411/8112168 | 8112099 | | |
| | Aurora; Intrigue; | f.p. 3 | ffp5a | ffp5b | 5x115MM | | | | | | |
| | 88 & 98 FWD; Cutlass Ciera; Cutlass Supreme 1988-1999 | f.p. 2 | ffp5a | ffp5b | 5x115MM | 70.23 | 2.76 | 8110411/8112168 | 8112099 | | |
| | Achieva; Calais, Firenza; Omega 1980-1986; Cutlus; Skyhawk | f.p. 3 | ffp3a | ffp3b | 5x100MM | 57.10 | 2.25 | 8110411/8112168 | 8112099 | | |
| | Calais | f.p. 3 | ffp3a | ffp3b | 5x100MM | 57.10 | 2.25 | 8110410/8112167 | 8112098 | | |
| | Bravada; Cutlass Supreme 1986-1988 | f.p. 3 | ffp5a | ffp5b | 5x4.75-in. | 70.23/83.82 | 2.7649/3.3 | 8110410/8112167/ 8110412/8112169/ 8111688 | 8112098/ 8112100/ 8112384 | | |
| | 88 & 98 (RWD) | f.p. 3 | ffp7a | ffp7b | 5x5.00-in. | 83.82 | 3.30 | 8110412/8112169/ 8111688 | 8112100/ 8112384 | | |
| | Plymouth | | | | | | | | | | |
| Horizon; Reliant; TC3; Turismo; Voyager | f.p. 1 | ffp1a | ffp1b | 4x100MM | | | | | | | |
| Arrow; Champ; Colt; Sapporo | f.p. 1 | ffp2a | ffp2b | 4x4.50-in. | 74.93 | 2.95 | 8110411/8112168 | 8112099 | | | |
| Breeze; Neon; Turismo; Voyager | f.p. 3 | ffp3a | ffp3b | 5x100MM | | | | | | | |
| Acclaim; Caravelle; Reliant; Sundance | f.p. 3 | ffp3a | ffp3b | 5x100MM | 56.99 | 2.24 | 8110410/8112167 | 8112098 | | | |
| Barracuda; Belvedere; Duster; Fury; Laser; Satalite; Savoy; Scamp; Valiant | f.p. 3 | ffp4a | ffp4b | 5x4.50-in. | 82.83 | 3.30 | 8110412/8112169/ 8111688 | 8112100/ 8112384 | | | |
| Plymouth | | | | | | | | | | | |
| Fury, laser | f.p. 3 | ffp4a | ffp4b | 5x4.50-in. | 71.54 | 2.82 | 8110411/8112168 | 8112099 | | | |
| Dusty; Scamp; Valiant | f.p. 3 | ffp7a | ffp7b | 5x5.00-in. | | | | | | | |
| Pontiac | | | | | | | | | | | |
| 1000; LeMans | f.p. 1 | ffp1a | ffp1b | 4x100MM | 67.8/57.1 | 2.6693/ 2.24803 | 8110411/8112168 | 8112099 | | | |
| 8000; Grand Am 1999-2001; | f.p. 2 | ffp5a | ffp5b | 5x115MM | 70.23 | 2.76 | 8110411/8112168 | 8112099 | 8112420 | 8112421 If equipped with LH "Stepped Center Hole" Alloy Wheels | |
| 6000; Bonneville; Grand Prix 1988-2001; Trans Sport | f.p. 2 | ffp5a | ffp5b | 5x115MM | 70.23 | 2.76 | 8110411/8112168 | 8112099 | 8112420 | 8112421 If equipped with LH "Stepped Center Hole" Alloy Wheels | |
| 6000; Phoenix 1982-1984; Sunfire | f.p. 3 | ffp3a | ffp3b | 5x100MM | 57.10 | 2.25 | 8110411/8112168 | 8112099 | | | |
| Fierro; Grand Am 1985-1996; Sunbird | f.p. 3 | ffp3a | ffp3b | 5x100MM | 57.10 | 2.25 | 8110410/8112167 | 8112098 | | | |
| Bonneville; Catalina; Grand AM through 1981; Grand Prix Le Mans through 1981; Phoenix | f.p. 3 | ffp5a | ffp5b | 5x4.75-in. | | | | | | | |
| Tempest; Ventura | f.p. 4 | ffp5a | ffp5b | 5x4.75-in. | 83.82 | 3.30 | 8110412/8112169/ 8111688 | 8112100/ 8112384 | | | |



Balancing Solutions Application Chart

| Pin-Plate™ | Make/Model | Pin-Plate | Fixed Finger Plate | | Bolt Circle | Center Hole | | Centering Cone Part No. | | Special Adapter P/N • Comments | |
|--|---|-----------|--------------------|------------|-------------|-------------|-----------------------------|-----------------------------|---------------------------------|---------------------------------|------|
| | | | 28MM | 40MM | | MM | Inches | 28MM | 40MM | 28MM | 40MM |
| | | | | | | | | | | | |
| Balancing Solutions | Pontiac | | | | | | | | | | |
| | Firebird; Grand Prix through 1987 | f.p. 3 | ffp5a | ffp5b | 5x4.75-in. | 70.23 | 2.76 | 8110411/8112168 | 8112099 | | |
| | Bonneville; Catalina; Parisienne | f.p. 3 | ffp7a | ffp7b | 5x5.00-in. | 83.82 | 3.30 | 8110412/8112169/ 8111688 | 8112100/ 8112384 | | |
| | Porsche | | | | | | | | | | |
| | 924 | f.p. 1 | ffp1a | ffp1b | 4x108MM | | | | | | |
| | All other models | f.p. 2 | ffp6a | ffp6b | 5x130MM | | | | | | |
| | Rover | | | | | | | | | | |
| | Discovery; Land Rover; Range Rover through 1994 | f.p. 1 | | | 5x6.50-in. | | | | | | |
| | Rover 1995-2000 | f.p. 2 | ffp7a | ffp7b | 5x120MM | | | | | | |
| | Saab | | | | | | | | | | |
| | 900 1987-1994; 9000 1986-1998 | f.p. 1 | ffp1a | ffp1b | 4x108MM | 65.00 | 2.56 | 8112168 | 8112099 | | |
| | 99; 900 through 1986 | f.p. 1 | ffp2a | ffp2b | 4x4.50-in. | | | | | | |
| | 900 1995-1998; 9-3; 9-5 | f.p. 2 | | | 5x110MM | | | | | | |
| | Saturn | | | | | | | | | | |
| | All models | f.p. 1 | ffp1a | ffp1b | 4x100MM | 57.15 | 2.25 | 8110411/8112168 | 8112099 | | |
| | Subaru | | | | | | | | | | |
| | Justy 1987-1994 | f.p. 1 | ffp1a | ffp1b | 4x100MM | 59.00 | 2.32 | 8110411/8112168 | 8112099 | | |
| | Justy 1995 and up | f.p. 1 | ffp2a | ffp2b | 4x4.50-in. | | | | | | |
| | SVX | f.p. 3 | ffp4a | ffp4b | 5x4.50-in. | | | | | | |
| | Forester; Impreza; Legacy; Outback | f.p. 3 | ffp3a | ffp3b | 5x100MM | 56.13 | 2.21 | 8110410/8112167 | 8112098 | | |
| Suzuki | | | | | | | | | | | |
| Esteem | f.p. 1 | ffp1a | ffp1b | 4x100MM | | | | | | | |
| Forsa; Swift | f.p. 1 | ffp2a | ffp2b | 4x4.50-in. | 60.00 | 2.36 | 8110411/8112168 | 8112099 | | | |
| Samuri; Sidekick; Vitara; X90 | f.p. 1 | ffp7a | ffp7b | 5x5.50-in. | 110.00 | 4.33 | 8111688 | 8112384 | | | |
| Toyota | | | | | | | | | | | |
| Celica 1986-1990 | f.p. 1 | ffp1a | ffp1b | 4x100MM | 60.07 | 2.36 | 8110411/8112168 | 8112099 | | | |
| Echo, FX ;Prius | f.p. 2 | ffp1a | ffp1b | 4x100MM | | | | | | | |
| Paseo; | f.p. 3 | ffp1a | ffp1b | 4x100MM | 53.98 | 2.13 | 8110410/8112167 | 8112098 | | | |
| Tercel; corolla 1988-2001; MR2 1985-1989 | f.p. 1 | ffp1a | ffp1b | 4x100MM | 54.00 | 2.13 | 8110410/8112167 | 8112098 | | | |
| Supra 1986-1998 | f.p. 1 | ffp2a | ffp2b | 4x4.50-in. | | | | | | | |
| Camry 1992-2001 | f.p. 2 | ffp2a | ffp2b | 4x4.50-in. | 60.07 | 2.36 | 8110411/8112168 | 8112099 | | | |
| Cressida 1985-1992; Van Wagon 1986-1990 | f.p. 3 | ffp2a | ffp2b | 4x4.50-in. | 74.93 | 2.95 | 8112168 | 8112099 | | | |
| Corolla 1986-1987 | f.p. 1 | ffp2a | ffp2b | 4x4.50-in. | 60.00 | 2.36 | 8110411/8112168 | 8112099 | | | |
| Camry 1985-1991; Celica 1991-2001 | f.p. 3 | ffp3a | ffp3b | 5x100MM | 64.00 | 2.52 | 8110411/8112168 | 8112099 | | | |
| Previa; RAV4;Solara | f.p. 3 | ffp4a | ffp4b | 5x4.50-in. | | | | | | | |
| Avalon | f.p. 4 | ffp4a | ffp4b | 5x4.50-in. | 60.07 | 2.36 | 8110411/8112168 | 8112099 | | | |
| MR2 1991-2001 | f.p. 3 | ffp4a | ffp4b | 5x4.50-in. | 82.83 | 3.30 | 8110412/8112169/ 8111688 | 8112100/ 8112384 | | | |
| Pickup; Sienna | f.p. 3 | ffp4a | ffp4b | 5x4.50-in. | 66.93 | 2.64 | 8110411/8112168 | 8112099 | | | |
| Tacoma | f.p. 3 | ffp4a | ffp4b | 5x4.50-in. | 105.99 | 4.17 | 8111688 | 8112384 | 8111688 or 8111935 w/8308095 | 8112384 or 8111935 w/8308095 | |

COATS® Balancing Solutions Application Chart Glossary

COATS, Inc. • Hennessy Industries • 1601 J.P. Hennessy Drive, LaVergne, TN 37086-3565 • (800) 688-6359 • (615) 641-7533 • (615) 641-5104 FAX • www.Hennessy-Ind.com

Pin-Plate™

8110410



Cone, Small - 1.125" (28MM) I.D.,
Range: 1.75"-2.25" (44.45-57.15MM),
(3 Cone System - From March 1992)

8110411



Cone, Medium - 1.125" (28MM) I.D.,
Range: 2.25"-3.00" (57.15-76.20MM),
(3 Cone System - From March 1992)

8110412



Cone, Large - 1.125" (28MM) I.D.,
Range: 3.00"-3.60" (76.20-91.44MM),
(3 Cone System - From March 1992)

8111688



Cone, Toyota Tacoma Truck, Back
Cone, 1.125" (28MM) I.D. Range:
3.25-4.38" (82.55-111.13MM)

8111935



Spacer, Light Truck & Viper Back
Cone, Allows back coning of wheels
with up to 5.20" (132.08MM) Center-
holes

8112098



Cone, Small, 40MM I.D., Range: 1.75-
2.25" (44.45-57.15MM)

8112099



Cone, Med., 40MM I.D., Range: 2.25-
3.00" (57.15-76.20MM)

8112100



Cone, Large, 40MM I.D., Range:
3.00-3.60" (76.20-91.44MM)

8112101



Adapter, Large, 40MM I.D., Range:
3.375-5.20", (85.73-132.08MM)

8112168



Cone, Med., B1, 1.125" (28MM) I.D.,
Range: 2.25-3.00" (57.15-76.20MM)

8112170



Adapter, Large, D1, fits IBS 2000 only

8112384



WHILE SUPPLIES LAST Cone, Toyota
Tacoma Truck, Back Cone 40MM I.D.,
Range: 3.25-4.38" (82.55-111.13MM)

8112420



Short Cone, Balancer, 1.125" (28MM)
I.D., Range 2.650"-3.025" (67.31-
76.84MM)

8112421



Short Cone, Balancer, 40MM I.D.,
Range 2.650"-3.025" (67.31-76.84MM)

8112760



Stud-Plate Adapter, 5x5.5" Bolt Circle,
1.125" (28MM) I.D., Used on Light
Truck Wheels

COATS® Balancing Solutions

COATS® Balancing Solutions Application Chart Glossary

COATS, Inc. • Hennessy Industries • 1601 J.P. Hennessy Drive, LaVergne, TN 37086-3565 • (800) 688-6359 • (615) 641-7533 • (615) 641-5104 FAX • www.Hennessy-Ind.com

Pin-Plate™

8112762



Stud-Plate Adapter, 5x5.5" Bolt Circle, 40MM I.D., Used on Light Truck Wheels

8112764



Stud-Plate Adapter, 6x5.5" Bolt Circle, 1.125" (28MM) I.D., Used on Light Truck Wheels

8112766



Stud-Plate Adapter, 6x5.5" Bolt Circle, 40MM I.D., Used on Light Truck Wheels

8112879



Stud-Plate Adapter, 5x135MM Bolt Circle, 40MM I.D., Used on Light Truck Wheels

8112880



Stud-Plate Adapter, 5x135MM Bolt Circle, 1.125" I.D., Used on Light Truck Wheels

8112897



Stud-Plate Adapter, 8x170MM Bolt Circle, 40MM I.D., Used on Light Truck Wheels

8112898



Stud-Plate Adapter, 8x170MM Bolt Circle, 1.125" I.D., Used on Light Truck Wheels

8113032



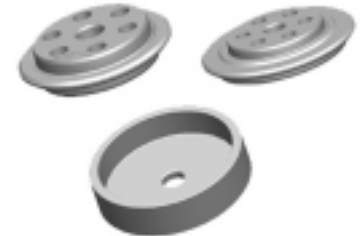
Offset Truck Wheel Adapter, Ford Double Sided Adapter, 1.125" (28MM) I.D.

8113033



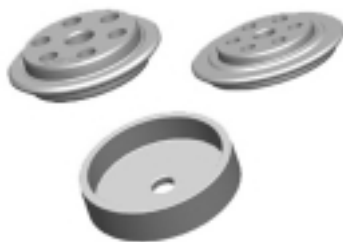
Offset Truck Wheel Adapter, Ford Double Sided Adapter, 40MM I.D.

8113041



Offset Truck Wheel Adapter Set, 1.125" (28MM) I.D., Ford Double Sided Adapter, GM/Chrysler 16" Double Sided Adapter & Backing Plate

8113042



Offset Truck Wheel Adapter Set, 40MM I.D., Ford Double Sided Adapter, GM/Chrysler Double Sided Adapter & Backing Plate

8113057



Offset Truck Wheel Adapter, GM/Chrysler Double Sided Adapter, 1.125" (28MM) I.D.

8113058



Offset Truck Wheel Adapter, GM/Chrysler Double Sided Adapter, 40MM I.D.

8113060



Metal Backing Plate, 1.125" (28MM) I.D., 7.91" O.D., used with Offset Truck Wheel Adapters & Improved Light Truck Front Cone Kit

8113061



Metal Backing Plate, 40MM I.D., 7.91" O.D., used with Offset Truck Wheel Adapters & Improved Light Truck Front Cone Kit

COATS® Balancing Solutions

COATS® Balancing Solutions Application Chart Glossary

COATS, Inc. • Hennessy Industries • 1601 J.P. Hennessy Drive, LaVergne, TN 37086-3565 • (800) 688-6359 • (615) 641-7533 • (615) 641-5104 FAX • www.Hennessy-Ind.com

Pin-Plate™

8113158



Pin-Plate #1, 1.125" I.D., 4x100MM/4x108MM/4x110MM/4x4.50"/5x5.50"/5x6.50", 5 Pins, Instruction Sheet, Application Chart

8113159



Pin-Plate #2, 1.125" I.D., 5x110MM/5x112MM/5x115MM/5x120MM/5x130MM, 5 Pins, Instruction Sheet, Application Chart

8113160



Pin-Plate #3, 1.125" I.D., 5x100MM/5x108MM/5x4.25"/5x4.50"/5x4.75"/5x5.00"/5x135MM, 5 Pins, Instruction Sheet, Application Chart

8113161



Pin-Plate #4, 1.125" I.D., 6x4.50"/6x5.50"/8x6.50", 8 Pins, Instruction Sheet, Application Chart

8113162



Pin-Plate #1, 40MM I.D., 4x100MM/4x108MM/4x110MM/4x4.50"/5x5.50"/5x6.50", 5 Pins, Instruction Sheet, Application Chart

8113163



Pin-Plate #2, 40MM I.D., 5x110MM/5x112MM/5x115MM/5x120MM/5x130MM, 5 Pins, Instruction Sheet, Application Chart

8113164



Pin-Plate #3, 40MM I.D., 5x100MM/5x108MM/5x4.25"/5x4.50"/5x4.75"/5x5.00"/5x135MM, 5 Pins, Instruction Sheet, Application Chart

8113165



Pin-Plate #4, 40MM I.D., 6x4.50"/6x5.50"/8x6.50", 8 Pins, Instruction Sheet, Application Chart

8113206



Fixed Finger Plate, FFP1a, 4x100MM & 4x108MM, 4 Tapered Fingers, 1.125" (28MM) I.D.

8113207



Fixed Finger Plate, FFP2a, 4x114.3MM & 4x108MM, 4 Tapered Fingers, 1.125" (28MM) I.D.

8113208



Fixed Finger Plate, FFP3a, 5x100MM & 5x108MM, 5 Tapered Fingers, 1.125" (28MM) I.D.

8113209



Fixed Finger Plate, FFP4a, 5x114.3MM & 5x108MM, 5 Tapered Fingers, 1.125" (28MM) I.D.

8113210



Fixed Finger Plate, FFP5a, 5x115MM & 5x120.65MM, 5 Tapered Fingers, 1.125" (28MM) I.D.

8113211



Fixed Finger Plate, FFP6a, 5x112MM & 5x130MM, 5 Ball Seat Fingers, 1.125" (28MM) I.D.

8113212



Fixed Finger Plate, FFP7a, 5x120MM & 5x127MM, 5 Tapered Fingers, 1.125" (28MM) I.D.

COATS® Balancing Solutions

COATS® Balancing Solutions Application Chart Glossary

COATS, Inc. • Hennessy Industries • 1601 J.P. Hennessy Drive, LaVergne, TN 37086-3565 • (800) 688-6359 • (615) 641-7533 • (615) 641-5104 FAX • www.Hennessy-Ind.com

Pin-Plate™

8113213



Fixed Finger Plate, FFP1b, 4x100MM & 4x108MM, 4 Tapered Fingers, 40MM I.D.

8113214



Fixed Finger Plate, FFP2b, 4x114.3MM & 4x108MM, 4 Tapered Fingers, 40MM I.D.

8113215



Fixed Finger Plate, FFP3b, 5x100MM & 5x108MM, 5 Tapered Fingers, 40MM I.D.

8113216



Fixed Finger Plate, FFP4b, 5x114.3MM & 5x108MM, 5 Tapered Fingers, 40MM I.D.

8113217



Fixed Finger Plate, FFP5b, 5x115MM & 5x120.65MM, 5 Tapered Fingers, 40MM I.D.

8113218



Fixed Finger Plate, FFP6b, 5x112MM & 5x130MM, 5 Ball Seat Fingers, 40MM I.D.

8113219



Fixed Finger Plate, FFP7b, 5x120MM & 5x127MM, 5 Tapered Fingers, 40MM I.D.

8183849



Stud-Plate Adapter, 8x6.5" Bolt Circle, 40MM I.D., Used on Light Truck Wheels

8183850



Stud-Plate Adapter, 8x6.5" Bolt Circle, 1.125" (28MM) I.D., Used on Light Truck Wheels

8308095



Cone, Light Truck - 1.125" (28MM) I.D., Range: 3.375-5.00" (85.73-132.08MM)

COATS® Balancing Solutions