



# McGEE COMPANY

SINCE 1951

Denver • Salt Lake • Albuquerque • Dallas

1-800-525-8888

www.mcgeecompany.com

Automotive Service Equipment

Tire Service Supplies

Retreading Equipment & Supplies

Passenger/Truck/OTR



EXPIRES 1/31/13

All prices are F.O.B. our warehouse unless otherwise specified. Lease figures are approximate and subject to change.

PRICES SUBJECT TO CHANGE  
VISA AND MASTERCARD ACCEPTED



## Largest stock of tire chains in the Rocky Mountain Area!



Wide Base Truck Cam Chains



Dual Truck Chains



DUO Tractor Chains

## Steel Stick-On Weight Special!

SST288PC 24 strips 288 ea 1/4 oz pcs. paper tear tape. Coated Steel



OE Quality tape  
**\$9.95 per box!**

## Tire Puncture Protection



Instant puncture protection ... repairs any pneumatic tire, tubeless or tube type. Prevents flats from cactus needles, thorns, stickers and most small nails. Also prevents high pressure and rim leaks.



Ascot #	McGee #	Description	Price
504-30016	FS16	16 oz tube	\$5.95
504-30035	FS35	1 gallon plastic container	\$28.95
504-30050	FS50	5 gallon pail	\$99.95
504-30065	FS65	55 gallon drum	Call!
504-30010	FS15	Applicator Pump w/16" hose	Call!
504-20505	MR50-5	Pump fits 5-gallon pail w/1 ft. hose	Call!

## 153-02312 231XP2

1/2" Super Duty Extended Anvil Air Impact Wrench

This new model redefines the standards set by the classic IR231 model, with an enhanced Twin Hammer impact mechanism for more power and in-handle exhaust to direct air away from the operator and the work area.



**\$134.95**

Free sleeve of Titleist golf balls with purchase of 231XP2!



**\$13.55 per box**



BL120 - Large  
BL130 - XLarge  
BL140 - XXLarge

Two Schrader EZ Sensors replace 90% of the OE sensors!

Eliminate need to wait for parts delivery!



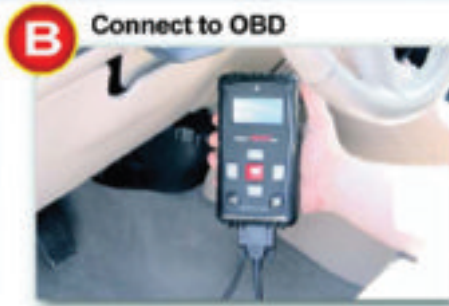
# LIKE SAVING TIME?

Check out our online shop — [www.McGeeCompany.com](http://www.McGeeCompany.com)

The screenshot displays the McGee Company online shop interface. At the top, the McGee Company logo is visible on the left, and the text 'McGEE COMPANY STOREFRONT' is centered. On the right, there is a 'Welcome' message and a contact number: 'Contact Us - 1-800-525-8888'. Below the header, a navigation bar includes links for 'Home', 'Advanced Search', 'Browse', 'Specials', and 'Order Pad'. A search bar with the placeholder 'Keyword' and a 'Search' button is present, along with links for 'view' and 'checkout'. A sidebar on the left lists various product categories: AIR SYSTEMS, AIR TOOLS, ALIGNMENT, AUTOMOTIVE & FLEET SERVICE EQUIPMENT, LIFTING EQUIPMENT, RETREADING, SERVICE EQUIPMENT, TIRE & WHEEL SERVICE, TIRE REPAIR MATERIALS & TOOLS, TPMS, TRACTION DEVICES, VALVE HARDWARE, WHEEL BALANCING, and WHEEL SERVICE. The main content area is a grid of nine product category tiles, each with a title, a list of sub-categories, and an image of representative products. The categories are: AIR SYSTEMS (Air compressors, Nitrogen tire filling systems, Air hose & reels, Air preparation products, Couplers & plugs, Dry air systems, Hose fittings); AIR TOOLS (Impact wrenches, Air ratchets, Hammers, Sanders, Grinders, Air tool accessories); ALIGNMENT (Alignment systems, Alignment tools & equipment, Shims & bushings for cars & trucks); LIFTING EQUIPMENT (Bottle jacks, Service jacks and stands, Transmission jacks, Hydraulic shop presses, Wheel dollies); RETREADING (Envelopes, Tire paint, Rasp blades, Staples & staplers); WHEEL BALANCING SUPPLIES (Passenger wheel weights, Truck wheel weights, Adhesive wheel weights, Wheel weight tools, Balancing compounds); SERVICE EQUIPMENT (Tire changers, Wheel balancers, Brake lathes, Lifts, Accessories); TIRE REPAIR MATERIALS & TOOLS (Tube patches, Bias & radial tire repair, Cements & chemicals, Tire repair equipment, Rubber vulcanizing materials, Tire repair tools, Tire spreaders); and VALVE HARDWARE (TPMS Accessories & Tools, Passenger & Truck Valves, Air/Liquid Valves, Large Bore, Valve Service Tools, Tire Gauges & Air Chucks). On the right side of the interface, there is a 'Line Item Add' section with input fields for 'Item Number' and 'QTY', and an 'Add to Cart' button. Below that is a 'My Account' section with links for 'Edit Account', 'Order History', 'Saved Orders', and 'Review Orders'. At the bottom of the sidebar, there is a 'Shopping Lists' section and a 'User Session' section with fields for 'User Name', 'Company Name', 'Customer Number', 'Warehouse' (Denver McGee Company), 'Phone Number', and 'Delivery Address' (1801 ELM AVENUE, P O BOX 137, ROCKY FORD CO 81067).

- Quick order entry
- Product images and descriptions
- Tied directly to your account and local warehouse
- Access to sizing charts, videos, MSDS, and product breakdown

As your McGee Company representative or request an account online. Call today 800-525-8888!



**FEATURES:**

- Large display and key pad
- Re-learn procedures on the tool
- Decodes critical sensor output like PSI, temperature and battery
- Make, Model, Year look up
- TPMS activation and scan tool in one package
- Removable SD card
- Bartec TPMS Audit Mode
- TPMS trouble code detection
- Long life rechargeable battery
- Easily connects to a computer without software
- Rugged design ideal for repair shops
- Integrated OBD technology
- One piece OBD cable
- UHF signal detection

- **RE-LEARN PROCEDURES**
- **VEHICLE PROGRAMMING**

Visit  
**WWW.MCGEECOMPANY.COM**  
resource page for latest  
TPMS application guide!

**Free MT103 Tool Kit with order of 400SD!** Expires 12/31/12

**Bartec Mechanical Tool Kit \$169.57**

- Valve Core Torque Driver
- T-10 Torque Driver
- T-20 Torque Driver
- 3-Way Fishing Tool
- Grommet Tool
- Torque Wrench
- TPMS Toyota Reset Tool



All fitted in a plastic case

Ascot No.	McGee No.	Description
469-10300	WRTMT103	Bartec Mechanical Tool Kit

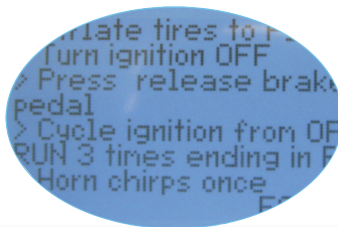
**Bartec 400 Tool**  
A McGee representative will train your technicians on the basics. Eliminate the need to send vehicles to the dealer for TPMS reset.  
**Call now for demo and price!**  
**1-800-525-8888**

**Keep TPMS "In-House" with the unique features on the Tech400SD!**

Update without a computer or the internet!



Re-Learn procedures right on the tool, at your finger tips!



Raised key touch pad for easier operation!



# TPMS

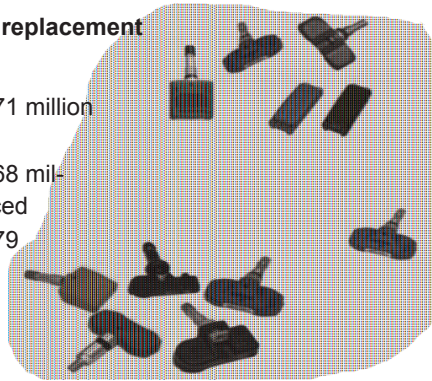
**McGee Company has the largest selection of TPMS sensors and TPMS service tools in the Rocky Mountain region!**

## TPMS Sensors to be serviced or replaced

- Nearly 260 million TPMS sensors now on the road!
- Over half of those are now at least 3 years old!
- Average battery life is 5-7 years.

## Market studies estimated replacement due to battery failure

- 2012 approximately 1.71 million sensor units replaced
- 2013 approximately 2.68 million sensor units replaced
- 2014 approximately 3.79 million sensor units replaced



## TPMS Valve Core

Electroless Nickel-Plated Valve Core - 100 per box

Ascot No. \_\_\_\_\_ McGee No. \_\_\_\_\_ Price \_\_\_\_\_  
 468-20055 SH20055 **\$11.95**



**Now in stock!**  
**Valve Cores**  
 New TPMS Catalog and Application Chart

## Rubber Snap-in Valve

**OE Schrader!**



SH20153  
**\$35.95**

SH20008

Ascot No.	McGee No.	Description	Price
469-20008	SH20008	Replacement Snap-In Valve for Schrader 20153 GM & 20315 Ford Transmitter and EZ Sensors	<b>\$2.99 ea</b>
	VS950	Dill Replacement Snap-in Valve GM & Ford Compatible	<b>\$1.86 ea</b>
469-20008	SH20153	GM Snap-In Sensor Complete	<b>\$35.95 ea</b>
469-20315	SH20315	Ford Snap-In Sensor	<b>\$42.07 ea</b>

- Cap & core included
- Requires T-10 torx tool for assembly/disassembly

1090K Accessory Kit fits Beru sensors

## TPMS Valve Caps

Plastic Steel or brass caps will freeze to aluminum sensors



Aluminum



Ascot No.	McGee No.	Description	Price per 100
468-00050	SH00050	Gray Plastic Cap	<b>\$11.95</b>
468-20495	SH20495	Aluminum Cap	<b>\$21.95</b>
468-00635	635	Black Cap for TPMS Snap-In	<b>\$21.95</b>



## Convert Vehicles with Valve Sensors to Band Type!

Visit [WWW.MCGEECOMPANY.COM](http://WWW.MCGEECOMPANY.COM) resource page for latest TPMS application guide!

**Now Available! TPMS Mounting Universal Band, Sensor, and Accessories**

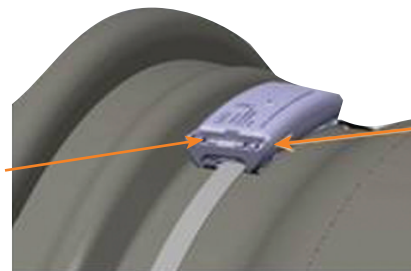


14" to 26"  
 One Size Fits All!

**\$12.95 ea**

Ascot No.	McGee No.	Description
461-11940	11941426	Universal Band

CPA CLIP



BANDED SENSOR ASSEMBLY (Sensor in cradle)

Installed with screwdriver or 6mm thin wall socket. Installation torque: 27-31 in-lbs

## Any change in wheel size requires new band!



**1025** - Metal cradle designed to hold the Ford Banded Sensor or a clamp-in valve can be mounted in the tab hole where traditional valve holes are not accessible.

**\$6.95**

McGee Part #	Description	Price Ea.
1025	Cradle	<b>\$6.95</b>
1026DL	CPA Clip	<b>\$1.75</b>
1048DL	Sensor OE	<b>\$56.85</b>
5105	Ford Sensor Install Kit w/band, cradle, clip	<b>\$67.27</b>
1048HP	Sensor OE	<b>\$77.14</b>

Special prices 1048 Sensor - Limited Quantities!

# SCHRADER — THE OE SENSOR



**Programmable Tire Pressure Monitoring Sensor**

- Eliminate lost sales
- Optimize inventory levels
- Reduce risk of installing the wrong part
- Increase speed, ensure accuracy, and reduce cost of servicing TPMS equipped vehicles
- Works with Bartec® Tech400 OBD learn tool or Tech 300SD
- Program a duplicate set of wheels and tires to match the OE vehicle

**...Always Have the Right Part, Right Away - Now in Stock!**

## EZ-sensor advantages:

- Schrader patented technology offers a truly programmable solution with snap-in & clamp-in options
- EZ-sensor performs identically to the original OEM-equivalent
- The EZ-sensor comes blank and is fully programmable to the selected vehicle type
- Initial EZ-sensor (315 MHz) coverage includes specific vehicles for Ford®, Lincoln®, Mercury®, Mazda®, GM®, Toyota®, Lexus®, Scion®, Nissan® and Infiniti® (see EZ-sensor application guide)
- EZ-sensor (433MHz) coverage includes specific vehicles on leading platforms such as Chrysler®, Dodge®, Ford®, Isuzu®, Jeep®, Lincoln®, and Mercury® (see EZ-sensor application guide)
- These two EZ-to-program snap-in sensors will eventually replace over 90% of OEM SKUs

*Free! Dozen Titlest golf balls with order of 10 EZ Sensors*



46133000 - **\$53.95 ea.**  
& 46133100

46133100  
433.92 MHz

46133000  
315 MHz

46934000 - **\$4.71**

Alloy replacement stem for TPMS rubber stem

## NOW DILL OE

Works with existing scan tools

- Installs right out of the box
- No programming required
- Reduces replacement sensor inventory
- Fits most Ford, GM, chrysler, Mazda, Suzuki, and Mitsubishi vehicles
- No additional training necessary
- Adjustable valve stem design



Tech400 Plus



OTC-3833



Snap-on 1



TIPS Tool

**A revolutionary solution from the world's leading supplier of TPMS Dill - VDO!**

- 46107001 - Redi-Sensor 315 MHz
- 46107011 - Redi-Sensor with rubber stem 315 MHz
- 46107004 - Redi-Sensor 433 MHz
- 46107002 - Redi-Sensor 315 MHz (Use 7020K Kit to repair Redi-Sensor)

**Metal stems/sensors now in stock.**

## REDI-Sensor™

**BUILT TO DELIVER LONG-LIFE RELIABILITY:**



**Free application chart available**

7001 & 7004 sensors cover over 90% of GM, Ford, Chrysler, Mazda, Suzuki, and Mitsubishi

**Redi-Sensor \$39.95 ea!**

**Now 46107002: Fits popular Honda, Hyundai, Kia, Lexus, Scion, Toyota and other Asian vehicles**

**Call Today 1-800-525-8888**

# TPMS ACCESSORY KITS & ASSORTMENTS

## TPMS Accessory Kits — Dill or Schrader - OE Approved

Ascot No.	McGee No.	Schrader Version	Description	Price
469-01030	1030K	SH20017AK	Siemens Kit for VW (Fits 1053 Sensor) (Orange)	<b>\$4.36</b>
469-01031	1031K	SH20017AK	VW Kit for Special Wheel Package (Lt. Green)	<b>\$7.15</b>
469-01040	1040DL	-	Siemens Mercedes Assembled Valve (Brown)	<b>\$8.93</b>
469-01050	1050K	SH20013AK/ SH20030AK	Siemens Kit for Chrysler (White)	<b>\$4.07</b>
469-01060	1060K	20001/20002/ 20135AK/20096AK	Fits Schrader SH20096 (Red)	<b>\$1.75</b>
469-01070	1070K	20004/20116AK/ 20115AK/20107AK	Fits Dill 9076, 9107, 9115, 9116 (Blue)	<b>\$1.75</b>
469-01080	1080K	20003/20007/ 20117AK/20028AK	Fits Dill 9028, 9034, 9064, 9081, 9117, 9161 (Green)	<b>\$1.75</b>
469-01090	1090K	-	Compatible with Beru Sensors (Grey)	<b>\$4.21</b>
469-20036	SH20036AK	-	Entire Valve (Schrader 20036) for Hyundai, Kia, Honda	<b>\$7.86</b>
469-01097	SH20035AK	-	Entire Valve (Schrader 20035) for Hyundai, Kia, Honda	<b>\$10.87</b>
469-01098	1098K	-	Dodge Sprinter Replacement Valve (non-stock)	<b>\$9.95</b>
469-01100	1100K	SH20032AK	Compatible with Pacific Sensors for Toyota/Lexus (Purple)	<b>\$2.95</b>
469-01110	1110K	SH20006AK	Compatible with Pacific Sensors for Toyota (Teal)	<b>\$2.95</b>
469-11120	1120K	SH20032AK	Compatible with Pacific Sensors for Lexus (Gold)	<b>\$2.95</b>
469-01130	1130K	SH20030AK	Compatible with Schrader 20005 (Burgandy)	<b>\$2.15</b>
469-20010	2010K	SH20015AK	Compatible with Schrader Sensors for Volvo (non-stock) (Lt. Brown)	<b>\$2.95</b>
469-20020	2020K	SH20030AK	Early 2007 GM Kit for Entire Sensors (Pink)	<b>\$1.95</b>
469-20030	2030K	SH20013AK/ SH20016AK	Dill Sensors 9154, 9204, 9214	<b>\$1.95</b>
469-02040	2040K	-	Kit for Honda Civic (Lt. Blue)	<b>\$1.95</b>
469-09250	VS925A	-	Aluminum Metal Replacement Valve for GM Snap-In	<b>\$3.95</b>
469-09251	VS925C	-	Chrome Replacement Valve for GM Snap-In	<b>\$3.95</b>
469-00950	VS950	-	Rubber Snap-In Replacement Valve for GM & Ford Transmitters. (ea)	<b>\$1.86</b>
	SH20020		Replacement Stem Chrysler, Uses Kit 1050K	<b>\$2.07</b>
	7000K		Accessory Kit for Redi Sensor	<b>\$3.16</b>
469-00080	VS80	-	Replacement Stem Kit Dill 7001R	<b>\$3.00</b>



VS925A



VS5925C



469-00950



SH20020



SH20036AK



SH20035AK



VS80

### TPMS Torque Wrench 3/8" dr 20 to 200 inch pounds

Perfect for tightening grommet nut to manufacturer specifications

**#3T317**  
**\$29.16**



3/8" Drive  
11mm and 12mm Sockets For TPMS Applications

Ascot No.	Description	McGee No.	Price
162-10011	11mm Deep	1011MD	<b>\$3.52</b>
162-10012	12mm Deep	1012MD	<b>\$3.52</b>

### Valve Core Torque Tool - easy to use handle

Preset torque guarantees correct setting every time on all cores!

- Calibrated to 4 in/lbs of torque
- Meets the Tire & Rim Association (TRA) specifications for installing valve cores on TPMS applications
- Can be used to install and remove cores in standard valve stems

Ascot No.	McGee No.	Price
46900044	46900044	<b>\$13.99</b>



### T-10 Torque Tool

- Installs replacement snap-in valve to Schrader 20153 transmitter
- Preset to 12 in/lbs (1.3 nM)

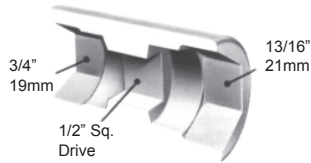
Ascot No.	McGee No.	Description	Price
469-20140	SH20140	T-10 Torque Tool	<b>\$29.95</b>



## 1/2" Dr. Flip Socket Sale!

STD. "Flip" Socket & Metric "Flip" Socket

Double-end reversible impact socket. Fits passenger and light truck wheel nuts.



Part No.	Description	Price
1291D	19mm-21mm	\$9.95
2192DT	Extra thin mm	\$9.95
1246D	3/4"-13/16" deep	\$7.95
1246DT	Extra thin 1246D	\$7.95
2349D	7/8"-15/16" thin deep	\$14.95

## 1" Impact Wrenches

**\$469.95!**

- High performance clutch
- 1,450 ft/lbs ultimate torque
- 6 vane motor - angle down exhaust!
- Three position power regulator



Ascot #	McGee #	Description	Price
155-77786	CP77826	6" Extended shank	\$469.95
155-07976	CP7976	6" Extended shank	\$699.95

## Splitfit

### FEATURES

- FREE FLEX AIRPRENE
- 3MM SHOCK ABSORBING PALM PADDING
- CLARINO® FINGER AND PALM MATERIAL
- UNIQUE SPLIT PALM DESIGN
- TOUGH SPANDEX TOP MATERIAL
- HIDDEN SEAM DESIGN
- SNUG FIT DESIGN



Reg. \$29.95.....**NOW \$22.95**

14309 - Medium, 14310 - Large

14311 - XLarge, 14312 - XXLarge

## Broken Inner Nut Remover

**Indestructible!**

Remove broken inner bud nuts in MINUTES with our NEW tool



**33105**  
**\$49.95**

### 1" DR Square Impact Sockets

Ascot #	McGee #	Description	Price
165-03026	3026S	1" Dr. x 13/16 square	\$18.85
165-03030	3030S	1" Dr. x 15/16 square	\$20.95

### 1" DR Combination Impact Sockets

Ascot #	McGee#	Description	Price
165-03323	3323C	1" Dr. 1-1/2" hex x 13/16" square	\$24.95
165-03321	3321MC	1" Dr. 41mm x 21mm square	\$34.95

### 1" DR 1-1/2" Budd Wheel Impact Sockets

Ascot #	McGee #	Description	Price
165-30481	3048D	1" Dr. x 1-1/2" Deep w/inside lip	\$24.95
165-30482	3048DR	1" Dr. x 1-1/2" Deep - standard	\$26.95

## 3 Piece Twist Socket Lug Nut Removal System

- Removal of damaged 3/4" and 19mm, 13/16" and 21 mm lug nuts
- Two dual-sided twist sockets have a fluted design which gives the sockets a tight grip to remove the most difficult locking and damaged lug nuts from the socket
- Works with 1/2" impact gun or breaker bar for service calls
- Includes an extractor punch



Ascot No.	McGee No.	Price
492-04300	4300	\$49.95

## IR285 Purchase

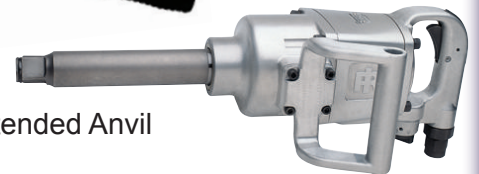
Receive free rechargeable LED work light!

#IRWorklight

One per customer LIMITED QUANTITY!



155-02856  
IR285B6



1" Heavy Duty Extended Anvil  
Air Impact Wrench

The new IR285 model combines exceptional power, durability, and operator convenience. It delivers 1,450 ft./lbs. of maximum torque, with a 5,000 rpm free speed and high efficiency, 6-vane motor.

IR285BS6 #5 Spline 156-28566      IR285B6 \$439.95  
IR285BS6 \$549.95

## Blaster 16ATC - Air Tool Conditioner

- Restores & prolongs tool life - 16 oz.
- Provides a coating & lubrication for tools while in use
- Inhibits Rust
- Increases RPM's
- Use for normal maintenance

\$5.85      \$5.95



16ATC      085  
181-00404      181-00085

## Tool Covers

Protect air tools from dirt and abuse.

Ascot #	Order #	Fits Tool
177-23132	231P32	231 Series
177-26132	261P32	261 Series
177-28132	285P32	285 Series
175-26071	CA155537	C749 Series
175-39818	CA139818	797 Series



## Nut Loosener Penetrating Blaster

**\$5.49 ea.**

16PB

A penetrating lubricant that frees everything! Displace moisture by saturating troubled area and allow to stand for a few minutes. 12.2 oz. spray.



\$3.95 each if purchased in case of 12.

**:: INSPECT** Threads, Stud Holes and Rim Flanges

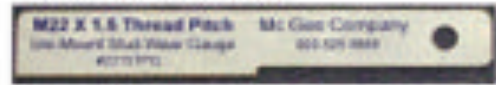


Gauge with Worn Stud

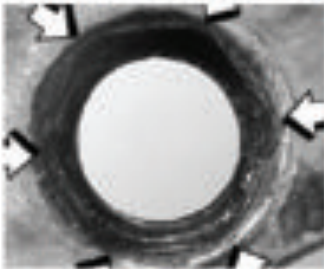


Gauge with New Stud

Use thread pitch gauge to determine wheel stud stretch and thread wear.  
**#2215TPG \$12.95**



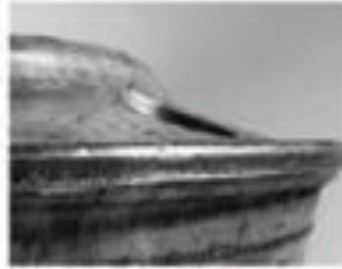
Check for stud hole damage



Uni-Mount



Budd



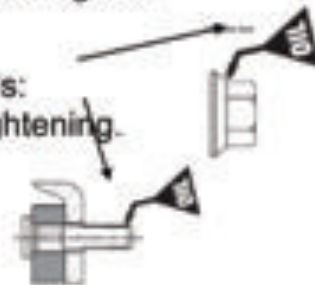
Check for flange wear



#606 Oil Can  
\$11.95

**:: MOUNT** tire and wheel assembly using a tire dolly to avoid damage to threads and potential back injuries.

Budd Nuts and studs should not be lubricated. TIA recommends: lubricate Hub-Pilot studs and nuts with 2 drops 30w oil before tightening.



**:: TORQUE** Wheel Nuts to manufacturer's specs

Pre-Torque Truck Wheels to 65 ft-lb



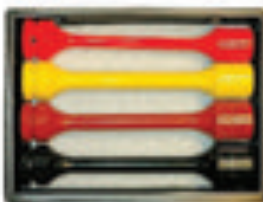
75520 65# torque limiting extension

- 2133MD 33mm x 1/2" dr
- 248D 1 1/2" hex x 1/2" dr



**NEW OSHA 29 CFR 1910.177** wheel mounting procedure manual and charts. These are required by OSHA to be displayed in truck tire service areas or carried in road service trucks \$5.95 each. One FREE with Torque wrench, Torque Set or Stud Cleaner.

**:: FINAL TORQUE** with torque sticks or manual torque wrench



20400 Torque Set includes

- 250 lb x 1 1/4" hex
- 475 lb x 33mm hex
- 475 lb x 1 1/2" hex
- 475 lb x 13/16 "sq



4AR1 Break Back Torque Wrench

\$569.95

After a wheel assembly has been installed, recheck the torque level between 50 and 100 miles of operation and retighten if necessary to the recommended torque using the proper sequence.

# CLEAN - INSPECT - MOUNT - TORQUE

**CLEAN** : Threads and Mounting Surfaces for Accurate torque

## Introducing the Tire Toolz Stud and Wheel Surface Cleaning System



\$129.00

**Tire Toolz**  
SC100 Stud Cleaner  
Do it Right... Do it Once... With Tire Tools



Application:  
22mm Uni-Mount Studs  
3/4"-16 Budd Studs

The SC100 stud cleaner quickly and easily removes rust, road grime and foreign particles from wheel studs. Three carbon steel brushes engage the full thread and provide a clean surface for the wheel retaining nut allowing an accurate final torque.



Shown mounted on optional Air Drill.  
Recommended for use with Low-Speed reversible drill.

Three Carbon Steel Brushes



\$24.85

RB22 Brush Refill Set

**Clean** : Hub and Wheel mating surfaces



14404 3/4" Abrasive Nylon Cup Brush \$25.85



For Aluminum Wheel Surfaces  
7537 Bristle Brush \$11.35  
Shown with  
5540 Mounting Kit \$21.95



10157 1" Abrasive Nylon Cup Brush \$10.95



9211QC 1/4" Collet Chuck Quick Change Adapter. Easily mount any 1/4" stem brush to a quick change chuck.



14404 Brush and 2512QC adapter  
Shown on air drill with quick chuck.

# KENTOOL TRUCK TIRE TOOLS

## Tubeless Tire Iron Sets



- Use on standard and large truck tires, including industrial, farm, buses and tractors

Ascot No.	McGee #	Description
402-46001	T46A	Med. Duty Mount/Demount Iron

Length	Stock	Weight	Price
36"	3/4"	4.5 Lbs.	\$49.45

## Truck Lock Ring Remover



- Designed for small diameter wheels

Ascot No.	McGee #	Length	Diameter	Weight	Price
402-33223	T23A	30"	1 1/16"	3.1 Lbs.	\$23.60

## Combination Rim/Ring Tool



- Flat tapered end ideal for all around ring and rim work

Ascot No.	McGee #	Length	Diameter	Weight	Price
402-33224	T23B	23-1/2"	1 1/16"	2.4 Lbs.	\$23.60

## KenTool Porkchop™ Wrenches

- Holds outer cap nut on dual wheels while turning inner nut
- Lip fits in hole to secure wrench in place
- Fits standard and metric cap nuts



Ascot No.	Mfg. No.	Description	Size	Weight	Price
406-30609	TX9	SAE	1-1/2"	.4 Lbs.	\$15.95
406-30610	TX10	Metric	35 mm	.4 Lbs.	\$15.95
406-30612	TX12	Metric	41 mm	.4 Lbs.	\$15.99

## Tire Mount/Demount Irons



- T45 series for use on standard truck tires

Ascot No.	McGee #	Length	Stock	Weight	Price
402-45003	T45A	37"	3/4"	4.6 Lbs	\$45.95

## Duck-Billed Bead Breaking Wedges Wood Handled



Ascot No.	McGee #	Handle No.	Length	Weight	Price
424-35327	T11D	T11DH	17"	4.8 Lbs.	\$54.50
424-35329	T11E	T11EH	30"	9.2 Lbs.	\$74.80

## Duck-Billed Bead Breaking Wedges Fiberglass Handled



Ascot No.	McGee #	Handle No.	Length	Weight	Price
424-35429	TG11E	TG11EH	32"	9.1 Lbs.	\$82.95

## Fiberglass Replacement Handle



Ascot No.	McGee #	For Hammer No.	Length	Weight	Price
429-35229	TG11EH	TG11E	32"	2.3 Lbs.	\$38.95
429-35127	T11DH	T11D - wood	17"	.75 Lbs.	\$14.77
429-35129	T11EH	T11E - wood	30"	1.2 Lbs.	\$21.92

## Impact Bead Breaker



- Loosens the most stubborn beads with floating bead breaking foot and ram bar
- Forces wedge foot between head and rim flange
- Delivers blow directly to the tip
- Designed for shop or road use

Ascot No.	McGee #	Description	Length	Length Ext	Weight Lb.	Price
427-35924	T24B	Economy	46"	72"	13.5 Lbs.	\$129.95
427-35926	T26B	Heavy Duty	50"	80"	23 Lbs.	\$179.95

## BLUE COBRA Truck Tire Demount Tool



INTRODUCING AN AFFORDABLE ALTERNATIVE!

Tougher build • Better price

Fast and easy, the Blue Cobra truck tire demounting tool is strong but economical the new "golden" standard for tire changing!

- Quickly demount nearly any 20", 22.5" and 24.5" tube-type and tubeless truck tire, up to a 13" wide wheel
- Solid steel Cobra head is press-fit into the steel handle — no fasteners to loosen or fall out
- Allows demounting of the tire without lifting the entire wheel and tire off the ground — helps to reduce back injuries.



## Hub-Centric Wheel Nuts - Manufactured in U.S. - High Quality

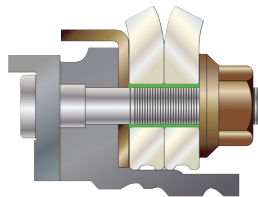
By filling the void between the stud hole, "clocking" is eliminated, and problems caused by clocking, such as wheel offs and wheel hub vibrations, are eliminated.

- Hub Centric Nut fills void standard flange nuts don't
- Stops rim from shifting forwards or backwards
- Eliminates "clocking" caused by standard wheel nuts not filling wheel hole completely
- Certified American Steel
- Each part tested for thread, fit and finish
- 50 per box

**49100133**  
**\$6.95 ea.**

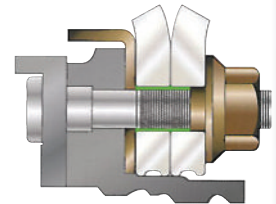
Ascot No.	Description
491-00133	33mm Hex X 1.5mm Thread

Wheel Assembly with Standard Nut

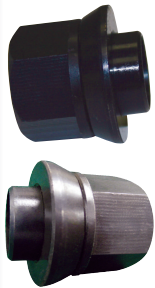


Void (Highlighted in Green) between stud and hole.

Wheel Assembly with Hub Centric Nut

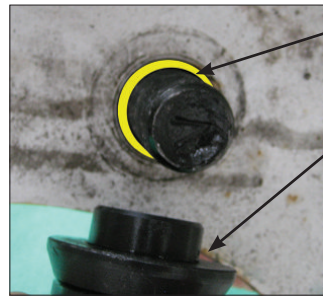


Hub centric nut fills void between stud and hole.



Note marks on the disc (just outside stud hole) caused by "clocking."

This nut had been torqued to specifications and retorqued per factory settings.



1) YELLOW HIGHLIGHT shows void between stud and stud hole.

2) Hub Centric Nut fills void between stud and hole.



1/6 - 16 Outer Cap Nut  
891RZ/892LZ



3/4 - 16 Super Single Cap Nut



269Z  
Flange Wheel Nuts



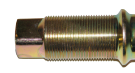
881M/333B  
Free Spinning Flange Nut  
2203/2304



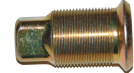
3/4 - 16 Outer Cap Nut  
888RZ/889LZ



336RZ/337LZ - 13/16 sq.  
Inner Nut for Steel/Aluminum  
Combination  
Longer Version - 621RY/622LY



988RZ/LZ - 13/16 sq.  
Inner Cap Nut- Dual  
Aluminum Wheels



708RZ/709LZ  
Grade 8.2 Inner  
Nut-Aluminum Wheels

McGee No.	Mfg. No.	Similar To:	Sale Price
891RZ (RH)	GL-2001	Budd-37891/2	Euclid-5552-R/L \$ .90
892LZ (LH)	GL-2002	Nutum-W-13/14	Batco-13-3012-R/L \$ .90
888RZ (RH)	GL-2101	Budd-37888/9	Euclid-5652-R/L \$ 1.48
889LZ (LH)	GL-2102	Nutum-W-15/16	Batco-13-3013-R/L \$ 1.48
995LZ (LH)	GL-2103	Alcoa-5554	Euclid-5554-R/L \$ 5.05
995RZ (RH)	GL-2104	Budd-70613/4	\$ 5.05
269Z	GL-2202	GMC-3771410	\$ 2.13
881M	GL-2302	(1 1/2 Hex) M.W. 88881	\$ 4.05
333B	GL-2301	(1 1/4 Hex) Budd 106333	\$ 2.03
<b>Metric Outer Nuts</b>			
GL2009	GL-2009	Hino-9004-21112	Isuzu-1-4233-023 \$ 5.08
GL2010	GL-2010	(Inner Thread = M30-1.5)	\$ 5.08

McGee No.	Mfg. No.	Similar To:	Sale Price
336RZ (RH)	GL-1003	Budd-35336/7	Euclid-5735 R/L \$ 3.26
337LZ (LH)	GL-1004	Nutum-W107/108	Batco-13-3007-R/L \$ 3.26
621RY (RH)	GL-1005	Budd-22621/2	Euclid-5568 R/L \$ 3.60
622LY (LH)	GL-1006	Nutum-W105/106	Batco-13-3006-R/L \$ 3.60
988RZ (RH)	GL-1011	Alcoa-5988-R/L	Nutum-W-486/7 \$ 3.63
988LZ (LH)	GL-1012	Euclid - 5988-R/L	Batco 13-3026-R/L \$ 3.63
<b>Grade 8.2</b>			
708RZ (RH)	GL-1001	Euclid-7895R/L	Budd-10708/9 \$ 1.48
709LZ (LH)	GL-1002	BWP-M128/9	Batco-13-3032R/L \$ 1.48
<b>Metric</b>			
GL1009 (RH)	GL-1009	Hino-9004-23101	Isuzu-1-42335-005 \$ 7.33
GL1010 (LH)	GL-1010	(M20 Inner & M30 Outer Threads)	\$ 7.33

## Gaither Bead Bazooka

Gaither's Bead Bazooka™ combines the most powerful Automatic Rapid Air Release System and easiest-to-handle tank for seating tubeless tire beads. Simply fill the tank, aim the Double Barrel, and FIRE! The instantaneous blast of air from the 6 liter tank will work on truck (including super singles), passenger, motorcycle, ATV and small AG tires.

- Smaller tank allows for easier handling in shop and service truck
- Light weight (12.25 lbs.) reduces stress on technician
- Push-button trigger allows technician to keep both hands on the tank for more control, making it safer than manual-release tanks
- "Slotted" Double Barrel directs the air for best overall lift



Ascot No.	Mfg. No.	Description	Sale Price
473-00006	BB6L	Bead Bazooka w/Auto Release System	\$259.95

## Balance the Whole Truck Wheel Assembly

**TIB10 - 10 oz. drop in bag - \$9.95!**

Counteract Balancing Beads

- Perfect balance - perfect wear
- Clean, trouble free balancing micro-beads provide continuous self-adjusting balance
- No clumping
- Just open the outside package and throw the inside bag into the tire
- Method allows the use of an air blaster to seat the tire on the rim without contaminating the seating area
- Air blaster pressure inside the tire will collapse the bag containing Counteract Balancing Beads or the package will break open and release its contents soon after driving
- Available in application sizes from passenger vehicles to heavy trucks
- All packaging is color coded to tire size on application chart



# TIRE VALVE SUPPLIES

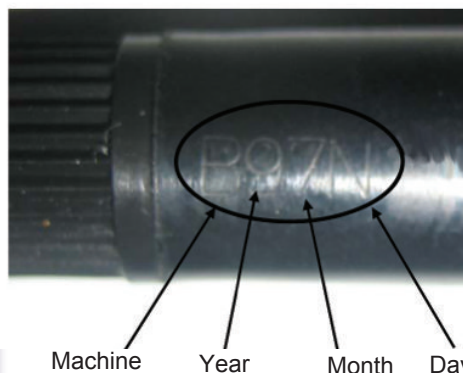
## Snap-In Tubeless Tire Valves - Dill

Made with special rubber compound to resist ozone damage and prevent premature deterioration caused by rim hole compression, heat, cold. Maximum inflation pressure is 60 P.S.I.



Valve Hole	McGee No.	TR No.	Effective Length	Standard Pack Box	Price
.453	412R	412	7/8"	500	<b>\$.22 ea.</b>
.453"	TR413	413	1 1/4"	500	<b>\$.23 ea.</b>
.453"	414R	414	1 1/2"	500	<b>\$.28 ea.</b>
.453"	423R	423	1 1/2"	500	<b>\$.42 ea.</b>
.625"	418R	418	2"	500	<b>\$.33 ea.</b>
.625"	415R	415	1 1/2"	500	<b>\$.31 ea.</b>
.625"	425R	425	2"	500	<b>\$.52 ea.</b>

Low cost Asian import TR413IV - \$.12 (boxes of 500)



Snap-in tire valves have become a commodity even though they are critical in maintaining the correct tire pressure. As questions arise regarding the life of rubber components and as an effort to provide traceability for this product line, Dill provides a solution! Each Dill stem has the production data etched on it!

## High Pressure Snap-In Valves - Dill

- Tubeless snap-in type valves for high pressure applications
- Maximum cold inflation pressure is 100 psi
- For .453" or .625" rim holes
- Do not use on tire rims that exceed .205" in thickness



Ascot No.	TR No.	Eff. Length	Valve Hole Dia.	Sale Price
461-00600	TV600HP	1.27"	.453"	<b>\$.69</b>
461-00602	TV602HP	2"	.453"	<b>\$.89</b>

Low cost import available - TV600HP1V

## Ford "F" Series Truck Valve **\$2.96 ea.**

- Ford "F" series with dual wheels
- Alcoa aluminum 16" wheels
- Front and rear wheels
- Chrome finish
- Dual seal cap included



Ascot No.	McGee No.	Description
462-01600	VS902WP	Ford "F" Series Valve

## Standard Bore Valve Tools

Ascot No.	McGee No.	Description	Price
469-00021	TL615	Double-Use Tool. Removes valve cores. Screws on valve mouth to open core.	<b>\$.99</b>
469-00011	TL645	Cable Valve Fishing Tool. Valve core wrench and deflating pin with flexible cable for fishing valve through rim hole. 24"	<b>\$1.92</b>
469-00002	4205	Black Heat Treated Heavy Duty Tire Valve Repair Tool. 4-in-1 standard valve tool repairs cap threads, repairs core threads. Easy out feature for removing damaged cones & removing standard caps.	<b>\$4.95</b>

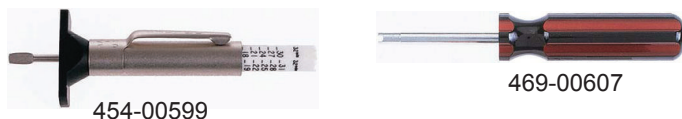


## Valve and Core Tools



Ascot No.	McGee No.	Description	Price
469-15407	5407	Tubeless Tire Valve Inserting and Removing Tool with Core Tool Built Into End	<b>\$7.90</b>

## Tire Tread Depth Gauges



Ascot No.	McGee No.	Description	Price
469-00607	TL620	Has plastic screwdriver handle for better grip and leverage.	<b>\$1.99</b>
	5124	Red-Yellow-Green Tread Depth Gauge: Allows your customer to visually display when tires should be replaced due to tread wear.	<b>\$2.49</b>



**MCGEE COMPANY • (800) 525-8888**

Shop online at [www.mcgeecompany.com](http://www.mcgeecompany.com)

**Denver (HDQTR)**  
1140 South Jason St.  
Denver, CO 80223  
(303) 777-2615  
FAX (303) 777-7140

**Salt Lake City**  
1101 S. 700 West  
Salt Lake City, UT 84104  
(801) 487-8751  
FAX (801) 487-8753

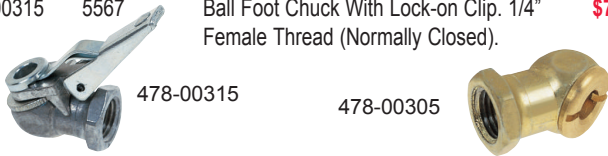
**Albuquerque**  
4412 Prospect NE  
Albuquerque, NM 87110  
(505) 883-9613  
FAX (505) 883-1382

**Dallas**  
8504 Chancellor Row  
Dallas, TX 75427  
(214) 689-0400  
FAX (214) 689-0448



## Ball Foot Chucks

Ascot No.	McGee No.	Description	Price
478-00335	5499	Ball Foot Chuck. 1/4" Female Thread (Normally Closed).	<b>\$2.47</b>
478-00315	5567	Ball Foot Chuck With Lock-on Clip. 1/4" Female Thread (Normally Closed).	<b>\$7.49</b>



## European-Style Clip-On Chucks

Ascot No.	McGee No.	Description	Price
478-02985	CH360	European-Style Clip-On Chuck. 1/4" Female Fitting. Silver Clip. (Normally Closed).	<b>\$6.59</b>
478-02995	CH3600P	European-Style Clip-On Chuck. 1/4" Female Fitting. Black Clip. (Normally Open).	<b>\$6.59</b>
478-01200	N1200	European-Style Clip-On Chuck. Serrated Shank for 1/4" I.D. Hose. Silver. (Normally Closed).	<b>\$4.50</b>



**Now USA made!**

McGee No.	Description	Price
6293DUSA	European-Style Clip-On Chuck, 1/4" Female Fitting. Silver Clip. (Normally Closed). (CH360)	\$7.95
6293EUSA	European-Style Clip-On Chuck. 1/4" Female Fitting. Black Clip. (Normally Open). (CH360001)	\$7.95

## Air Line Inflators

- Ideal for gauging and inflating dual tires on trucks and buses as well as passenger cars and light trucks. Solid brass indicator bar
- Allows operator to stand away while inflating and deflating tires
- Bleeder valve allows user to adjust tire pressure without touching either the tire or valve stem

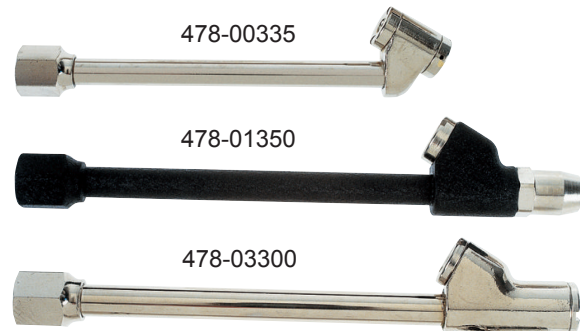


Ascot No.	McGee #	Description	Price
477-00001	I406M	Safety Inflator Gauge. 12" Hose With Dual Foot Chuck. 10 To 120 PSI. Available 6ft, 9ft, & 12ft hose	<b>\$39.95</b>
477-00002	I4053	Safety Inflator Gauge. 3' Hose With Clip-On Foot Chuck. 10 To 120 PSI. Bleeder Valve. Available 6ft, 9ft, & 12 ft hose	<b>\$39.95</b>
477-00003	I4053LOM	Safety Inflator Gauge. 3' Hose With Straight Lock-On Chuck. 10 To 120 PSI. Bleeder Valve.	<b>\$41.95</b>

**6 ft., 9 ft., 12 ft. your choice \$44.95**

## Dual Foot Air Chucks

Ascot No.	McGee No.	Description	Price
478-01350	CH350LO	Straight-On/Angled Chuck. Protective Black Epoxy Finish (Normally Closed)	<b>\$7.59</b>
478-00335	CH335	Angled Chuck. Plated Finish (Normally Closed)	<b>\$4.49</b>
478-03300	CH330LO	Straight-On/Angled Chuck. With Lock-On Threads (Normally Closed)	<b>\$7.29</b>
478-03301	CH330	Straight-On/Angled Chuck (Normally Closed)	<b>\$6.73</b>
478-03330	CH333LO	Straight-On/Angled Chuck. 14" Long (Normally Closed)	<b>\$8.57</b>



## Lock On Air Chucks

Ascot No.	McGee No.	Description	Price
478-05265	5265SH	Lock-On Air Chuck. Specially Designed To Lock Onto The Cap Of A Standard Bore Valve Stem When The Sliding Sleeve Is Pushed To Forward Position	<b>\$8.32</b>



## Couplers & Nipples

- Steel plated couplers with hardened steel balls and stainless steel springs
- Plugs heat-treated to reduce wear on critical mating surfaces
- Interchange with Tru-Flate 10 and 100 type series as well as units produced by other manufacturers
- Maximum working pressure 300 psi.

## Automotive Standard Series "G"



Part No.	Description	Price
3505	1/4" Coupler Male	<b>\$4.72</b>
3506	1/4" Nipple Male	<b>\$1.25</b>
3507	1/4" Nipple Female	<b>\$1.25</b>
3515	3/8" Coupler Male	<b>\$7.53</b>
3517	3/8" Nipple Male	<b>\$2.46</b>
3518	3/8" Nipple Female	<b>\$2.67</b>
3512	1/2" Coupler Female	<b>\$7.39</b>
3513	1/2" Nipple Male	<b>\$4.37</b>
3514	1/2" Nipple Female	<b>\$3.67</b>

# TIRE GAUGES



**Now USA made Dill!**

7212USA 20-120 PSI high pressure gauge

**\$3.95**

## Automotive Tire Gauges



- Pencil, chrome tire gauges with nylon indicator bars

Imprinted Gauges Available with Your Name. Call for details!

Ascot No.	McGee #	Range	Type	Price
476-10105	GA105	10-50 PSI	Passenger Gauge	<b>\$2.99</b>
476-10115	GA115	20-120 PSI	High Pressure Gauge	<b>\$2.89</b>
476-10100	GA100	1-20 PSI	Low Pressure Gauge	<b>\$3.14</b>
476-10110	GA110	10-50 PSI	Passenger Gauge 75-340 kPa Calibrated in PSI & kPa	<b>\$2.74</b>
476-10125	GA125	5-45 PSI	Air/Liquid Gauge - tractor	<b>\$3.12</b>
476-10145	GA145	10-75 PSI	Mid-Range Gauge 70-500 kPa Calibrated in PSI & kPa	<b>\$2.60</b>

## Counter Display

### Retail Gauge Opportunity

#### Promote accurate tire inflation

**211DIS** — Counter Display with ten 10-50 lb. gauges

476-00211..... **\$25.95**

**941DIS** — Counter Display with ten 10-120 lb. gauges

476-00941..... **\$25.95**



7277USA Counter Display with ten USA made gauges - 10-75PSI **\$32.95**

## Pocket Truck Gauges



Ascot No.	McGee #	Description	Price
476-10150	GA150	Straight-On/Angled Gauge. 20-120 psi. Chrome Plated.	<b>\$7.99</b>
476-10160	GA160	Straight-On/Angled Gauge. 20-120 PSI. Black Baked Epoxy Protective Finish.	<b>\$7.79</b>
476-10130	GA130	Dual Foot Angled Pencil Gauge. 20-120 psi.	<b>\$4.39</b>



Now USA made  
7263USA **\$9.95**

Straight-On/Angled Gauge  
20-120 PSI. Black Baked Epoxy Protective Finish.

## Truck Service Gauges



476-10135



476-10155



476-10165



476-10185

- Wide variety of service gauges to accommodate the numerous tire and wheel configurations encountered by tire service personnel
- Available in chrome plated or protective black epoxy finish as indicated
- Calibrated from 10-150 psi in 2 pound increments
- Nylon or metal indicator bars

Ascot No.	McGee #	Gauge Type	Price
476-10135	GA135	Angle Chuck With Nylon Bar	<b>\$8.55</b>
476-11135	GA135S	Same As Above, Angle Chuck With Metal Bar	<b>\$9.63</b>
476-10155	GA155	Straight-On With 30° Reverse Chuck	<b>\$12.79</b>
476-10165	GA165	Same As Above, Straight-On With 30° Reverse Chuck, Black Epoxy Finish	<b>\$9.23</b>
476-11155	GA155S	Same As Above, Straight-On With 30° Reverse Chuck, Metal Bar	<b>\$12.92</b>
476-10185	GA185	Dual Foot Service Gauge With Nylon Bar, 180° Chuck, Chrome Plated	<b>\$11.77</b>

## E. Professional Sign Glass Truck Gauges

- Range: 10-160 PSI in 2 PSI increments
- ± 1 PSI accuracy
- High quality design
- 360-degree swivel head



McGee No.	Mfg. No.	Description	Price
47632920	3292C-RED	Sight Glass Master Truck Gauge - Dual Foot Chuck	<b>\$49.95</b>
47632921	3292D-RED	Sight Glass Master Truck Gauge - Straight Chuck	<b>\$49.95</b>
47632922	3292E-RED	Sight Glass Master Truck Gauge - Angle Chuck	<b>\$49.95</b>

## Tubeless Truck Clamp-in Valves Dill - with U.S.A. made grommet!

Straight clamp-in valves used on both demountable and non-demountable rims. For .625" diameter valve hole.

Available in BENT FORM - TR57213 - 13° - **\$1.61 ea.**



McGee #	Effective Length	100 Ea.	Cost Each
TR500	2"	\$1.00	\$1.30
TR501	1 1/2"	\$.98	\$1.28
TR570	3 1/8"	\$1.08	\$1.40
TR571	3 3/8"	\$1.06	\$1.38
TR572	3 3/4"	\$1.17	\$1.52
TR573	4 3/8"	\$1.23	\$1.60
TR574	5"	\$1.26	\$1.64

Import TR572IV - \$.99 ea!

## Valve Stem Ratchet Wrenches



469-00018

Ascot No.	McGee No.	Description	Price
469-00018	VSW18	For TR570 series valves	\$14.95
469-00020	VSW20	For TR540 series valves	\$16.95

## Metric Rim Hole Valve (9.7mm Valve Hole)

\* Some imported trucks will have steel wheels that incorporate the 9.7mm valve hole (.390")



McGee No	Ascot No	ETRTO	Bend	A	B	Price (ea.)
70MS27	462-07025	V3-20-5	27°	1-3/16"	1-9/16"	\$2.99
80MS27	462-08027	V3-20-7	27°	1-3/16"	2"	\$2.99
90MS27	462-09027	V3-20-4	27°	1-3/16"	2-3/8"	\$2.99
115MS27	462-11527	V3-20-6	27°	1-3/16"	3-3/8"	\$3.99
41MS00	462-04100	V3-20-1	STR	1-3/16"	—	\$2.99

## Truck Grommets



G550 5093 0330 5953 59765 G170S

McGee #	Rim #	Fits	Used On
5953	RG-15	.625 Valve Hole	TV-500 Series, TV-570 Series
RG15S	RG-15	.625 Valve Hole	TV-500 Series, TV-570 Series red grommet 288°
G160	RG-22	.812 Valve Hole	H-41, T-81, T-30, DS-385, DS210
5093	RG-46	.625 Valve Hole	TV-509, 510, 511
G-174	RG-48	.625 Valve Hole	TV-513, 515
G170S		.625 Valve Hole	Heat-Resistant Grommet for TV-570 Series (400°) green
59765	RG-54	.453 Valve Hole	TV-416, 416L, 6008
525	RG-39	.625 Valve Hole	TV-416, 416L
G550	RG-70	.9975 Valve Hole	Fits TV-550 Series
0330	RG-30		TR-540 Series Valves

## Tire Valves

O-ring seal valves for Alcoa truck wheel (9.7MM Valve Hole)

Many production Alcoa aluminum wheels are manufactured with a 9.77MM valve hole that requires an O-Ring tire valve. Haltec valves have a high temperature resistant O-Ring and a heavy duty metal valve cap.

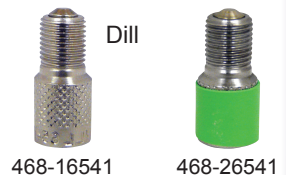
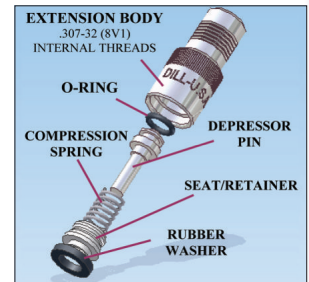


0330 O-ring available for TV540 Series  
NOW! 100 ea TV545D - **\$1.59 ea**

Valve TR No.	AHeight	Bend Angle	B Length	Price ea.
TV543	2.40	-	-	\$2.61
TV543D	.98	60°	1.38	\$2.64
TV543E	.98	75°	1.38	\$2.64
TV544	2.90	-	-	\$2.97
TV544D	.98	60°	1.94	\$2.97
TV545	3.50	-	-	\$3.24
TV545D	.98	60°	2.6	\$1.99
TV546	4.25	-	-	\$3.17
TV546D	.98	60°	3.35	\$3.38
TV546E	.98	75°	3.35	\$3.42
TV546G	.98	36°	3.35	\$3.31

## Double Sealing Valve Caps

- Light weight design uses both high temperature and low temperature resistant airtight seals at extension tip and valve mouth
- External grooves accommodate all industry standard air chucks and gauges
- Knurled surface for easy hand installation
- Nickel plated for better appearance and improved corrosion protection



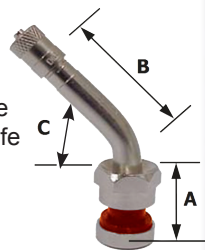
468-16541 468-26541

Ascot No.	McGee No.	Description	Price
468-06541	6541N	Double Seal Valve Cap	\$ .69 ea.
468-26541	6541N2	Double Seal Valve Cap for Nitrogen Non-Stock Item	\$ .99 ea.

## Metric Clamp-In Valves - 550 Series Popular on all new Alcoa wheels!

Compatible with aluminum wheel designs with .389 valve hole.

- Viton grommets offer a greater temperature range, a better seal, and a longer service life — Maximum temperature 250°
- Easier installation with screwdriver slot.
- Recommend installation torque 45 in - lbs.



McGee #	A	B	C	Price ea.
TV553	2.31	-	-	\$4.28
TV553C*	0.93	1.38	45°	\$4.28
TV553E*	.98	1.38	75°	\$4.28
TV554D*	.98	1.94	60°	\$4.28
TV555D*	.98	2.6	60°	\$4.28
TV555E	.98	2.6	75°	\$4.28

\*In Stock

# WHEEL WEIGHTS

**Call today for the correct stick-on weight!**  
**1-800-525-8888**

## Steel Stick-On Weight Specials!

SST288PC 24 strips 25 oz. seq, 288 pcs. paper tear tape  
**\$9.95**



Mfg. #	Description
7026	48 - 3 oz. strips pre-cut in 1/4 oz. increments of 3/4" width. Low profile style
100360	30 - 3 oz. strips pre-cut in 1/4 oz. increments of 1/2" width
300360	30 - 6 oz. strips pre-cut in 1/2 oz. increments of 3/4" width (Truck & RV)



P110  
48611000



3358  
486-33580



Scraper 71510  
486-071510

**486-71510 71510 Adhesive Wheel Weight Super Scraper**  
 Removes emblems, body side moldings and stick-on wheel weights. .... **\$14.95**

**486-33580 3358 KD/Bada Premium Weight Tool** - Ideal for all weights, including coated..... **\$24.95**

**48611000 Premium tool with replaceable hook (486-11005)**..... **\$29.95**

### Stop Using Expensive Wheel Cleaning Solutions Wheel Cleaner

- Water-Based
- Biodegradable
- Non-Petroleum
- Non-Toxic

A clean wheel is critical to good stick-on wheel weight adhesive.



1000 mL spray bottle

Ascot No.	Description	Price
48675032	Wheel Cleaner 32 Oz. Spray Bottle	<b>\$7.95</b>
48675017	Wheel Cleaner 1 Gallon Bottle	<b>\$14.95</b>

### A note about today's wheels

For environmental reasons the car manufacturers recently started using water-based paint on wheels. Unfortunately, those paints have an adverse effect on the adherence of wheel weights. The special formulation assures optimal adherence even on surfaces coated with water-based paint.

## MC Series fits more U.S. vehicles than any other weight!

**MC**

### "MCN" Series- Wheel Protectors® Coated



The "MCN" series is the recommended weight for all applications shown below. The "MCN" meets all OEM quality specifications.

### "MC" Series-Uncoated Fits most Chrysler, GM, Ford since 1990



We recommend that coated weights be used on all vehicles having alloy wheels.

"MCN" Coated—25 pc. box. "MC" Uncoated—50 pc. box

- |         |            |            |
|---------|------------|------------|
| AUDI    | JAGUAR     | Up to 1996 |
| BMW     | KIA        |            |
| CATERA  | MITSUBISHI |            |
| GEO     | SUBARU     |            |
| HYUNDAI | SUZUKI     |            |
|         | VOLVO      |            |



**IAW**



5 to 60 g

- |               |                       |
|---------------|-----------------------|
| AUDI          | From 1997             |
| HONDA & ACURA | All from 1980 to 1989 |
| MERCEDES      | All since 1976        |
| VW            | From 1997             |



Also used on many after-market alloy wheels with thin rim flanges

**EN**



10 to 60 g

- |           |   |
|-----------|---|
| CHEVROLET | Use on full size pickup, Suburban.                          |
| GMC       | Yukon, Tahoe from 2000. Denali & Escalade use MCS for 2000. |
| FORD      | Expedition from 1997 F-100, F-150 from 1997                 |
| LINCOLN   | Navigator from 1998   |

We recommend the use of TS series weights on all full size pickup trucks and vans equipped with steel wheels.

The use of "REG: series passenger weights on thicker truck rims may cause over-stressing of clips resulting in weight failures.



**TS**



1/4 oz to 3 oz

- |          |                 |
|----------|-----------------|
| ACURA    | Most since 1990 |
| DAEWOO   | All since 1999  |
| HONDA    | All since 1989  |
| INFINITI | All since 1990  |
| ISUZU    | All since 1997  |
| LEXUS    | All since 1990  |
| MAZDA    | Many since 1990 |
| NISSAN   | All since 1990  |
| TOYOTA   | All since 1990  |



**FN**



5 to 70 g

## Go Jo® Hi Tactile Gloves



- Easy to clean
- Long lasting
- Light and durable
- Outlast other gloves 10 to 1!

\$5.49 pr.  
Large # 143212  
Ex-Large # 143312



## Cotton Weave Blue Poly Palm Glove

C122 \$1.49/pr  
\$.99/pr. per doz

## Super Tough Hand Scrub

395-00640 TS64 64 oz. tub - **\$11.95**



*"The best hand cleaner available"*

Leaves hands soft and chap free. Removes dirt and grease quickly.

**\$13.55 per box**



BL120 - Large  
BL13 - XLarge  
BL14 - XXLarge

## Now! Tuff Scrub Cleaner in a liquid

**TS1GAL**

Easy to use pump style - **\$18.95**



## UVEX - Black Frame Safety Glasses

\$4.95 pr. per doz

SB410S



## Hot Mill Long Cuff

\$2.95 pr.  
GG3245



## Leather Palm Short Cuff

\$3.95 pr.  
\$2.95 pr. per doz



112

## Deluxe Wheel Lock Removal Set

The Deluxe Hubcap and Wheel Lock Removal Set safely removes and replaces GM, Ford and Chrysler wire wheel hubcap locks on 1978 and up vehicles. Variable drive keys will also fit Corvette, McGard hubcap locks and aftermarket wheel lug locks. Kit comes in a durable plastic carrying case with instructions. Includes 4200A twist socket remover.



**401-02841 - LT400 - \$89.95**

**Economy kit without 4200A**

**401-02840 - LT400A - \$59.95**

## Wheel Chock

1013985

\$13.55 ea  
Chain not included



## Soft E-A-R Plugs

6300  
\$59.95 per box of 200!



## Green Valve Caps for Nitrogen Inflated Tires



468-00207



590021



590019



46800307



468-43607

## #MTK Pouch

**\$25.95**

Includes:

- 1 ea. - GA105 Gauge
- 10 - 50 PSI Gauge
- 1 ea. - MK White Markal
- 1 ea. - 1246D Flip Socket 3/4-13/16 Thin Wall
- 1 ea. - 1291DT Flip Socket 19mm-21mm
- 1 ea. - 595TM Trend Depth Gauge



**5LD74** empty pouch available!

Ascot #	McGee #	Description	Price
46800207	46800207	Green Plastic Nitrogen Cap	<b>\$.03</b>
46800307	46800307	Green Valve Oring	<b>\$.03</b>
46843607	436075	High Quality Green Stamped Chrome	<b>\$.29</b>
--	590021	Chrome Nitrogen Valve Cap (100/box)	<b>\$24.95</b>
--	590019	Aluminum Nitrogen Valve Cap (100/box)	<b>\$24.95</b>

Use chrome caps on brass stems only and aluminum caps on aluminum stems

# TIRE REPAIR ACCESSORIES

## Ascot (Lead Wire Pull Through Patch/Plug)

- Easiest and most popular method to fill a nail hole and apply a patch in one simple step
- Lead wire guides the rubber stem through injury
- Stem coated with self vulcanizing material and patch features Versacure bonding gum
- For tread area of bias and radial passenger and truck tires



McGee No.	Xtra Seal	Description	Box Qty.	Sale
58700301	13-670	1/8" Stem	48	\$37.73
58700306	13-673	1/4" Stem	24	\$18.40
58700309	13-674	3/8" Stem	24	\$23.48

## TUBE REPAIR PATCHES AND PUNCTURE REPAIR UNITS Ascot (Push Through Patch/Plug)

- One-piece molded rubber patch/plug unit with a metal quill that protects the stem from damage during insertion
- For tread area of bias and radial passenger and truck tires



Ascot No.	McGee No.	Xtra Seal	Description	Box Qty.	Sale
587-01151	QSR-1	13-386	1/4" (6mm) Stem	24	\$18.93
587-01152	QSR-2	13-382	1/4" (6mm) Stem	48	\$28.83
587-01150	QS50R	13-381	1/8" (3 mm) Stem	48	\$30.83

Call for special prices on bulk quantities of 1,000 per bag! Save \$\$\$

## Carbide Cutting Tools



Part #	Description	Prices
BU18T	1/8" Taper Burr (PCC1)	\$7.69
BU14T	1/4" Taper Burr (PCC2)	\$30.20
BU38T	3/8" Taper Burr (PCC4)	\$27.13
BU12B	1/2" Ball Burr	\$25.00
BU732N	7/32" Long Pointed Burr (Use with 1/4" Plug)	\$29.42
BU516N	5/16" Long Pointed Burr (Use with 3/8" Plug) (PCC3)	\$44.00
BU716N	7/16" Long Pointed Burr (Use with 1/2" Plug)	\$98.96

## Paintstik® Marker



Markal®

Permanent, waterproof and fadeproof. Marks on wet tires, withstands retreading temperatures. Nontoxic, contains no lead. Sold 12 per box. Other colors available

Ascot #	McGee #	Color	Price
459-80257	MKWhite	White	\$7.99
459-80258	MKYellow	Yellow	\$7.99

## Tire Marking Crayons

- Bright Color On Any Tire
- Will not melt, soften or rub off in the pocket. A quality crayon that marks on tires, tubes and rubber. Sold 12 per box.

Ascot #	McGee #	Color	Price
459-51420	51420	White	\$4.99
459-51421	51421	Yellow	\$4.99

## Professional Stitchers

- Corrugated ball bearing sticher with hardened steel wheel and varnished wooden handle



Ascot No.	Part #	Description	Price
536-00001	30	1-1/2" Diameter x 1/16" Face	\$6.99



- Used to inspect injuries in tires and to remove small stones and debris

Ascot No.	McGee #	Description	Price
537-00001	1013P	Black Handle Awl	\$4.82

## Buffing Wheels



33



539-00788

1030G



BC-1

Ascot #	McGee #	Description	Price
539-00033	33	3/8" - 24 Arbor for mounting buffing wheels	\$3.90
539-10001	BC1	Fine grit coarse, round-nose buffer wheel, Tungsten Carbide 2 1/2" diameter — use on tires or tubes	\$3.50
538-13000	1030G	2" fine tooth buffing cone-Ideal for passenger inner liners	\$14.95
538-01034	1034T	2" med. tooth buffing cone-Ideal for passenger inner liners	\$19.95
539-00788		(2) No. BC-1 buffing wheels mounted back-to-back on No. 33 Arbor (order item separately)	



- This tool is a must for professional tire repairs
- Eliminates power buffing on many tire repairs
- Scraper removes material that might contaminate buffing wheels, ensuring a better repair every time

Ascot #	McGee #	Blade Length	Price
537-00004	933	Black Handle Inner Liner Scraper	\$5.71

## Rema Minicombi Repair Units & Accessories

Part of Rema's renowned Blue Bonding System™, Minicombi features a metal pilot guide for easy installation and seating. Specially designed for tread area punctures on both radial and bias-ply tires, Minicombi should be used with Special Cement BL.



Ascot No.	McGee #	Description(Units/Box)	Price
581-00670	A3	1/8" Minicombi A3 (50/Box)	\$89.95
581-00673	A6	1/4" Minicombi A6 (40/Box)	\$110.95
581-68008	B8MC	5/16" Minicombi B8 (20)	\$85.14

## Rema Tip Top Universal Patch



The Hole Solution™ - The only patch you'll ever need for making a nail hole repair. For radial and bias-ply passenger or truck tires.

Ascot No.	REMA No.	Injury Size	Qty.	Price
550-36707	UP3	Small Nailhole	100	\$55.95
550-26714	UP45	3/16" Nailhole	300	\$239.95
550-36721	UP6	1/4" Nailhole	50	\$59.95
550-36745	UP8	5/16" Nailhole	50	\$79.95

## RAD 100 Series Radial Repair Units

**RL110 Bulk 30 Per Bag - \$39.95**

REMA RAD 100 Series center-over-injury repair units has replaced older styles of non-flex to non-flex patches throughout the entire world . . . virtually revolutionizing the process of radial repair patch reinforcement.



Ascot No.	McGee No.	Patch Size Inches	(mm)	Qty/Box	Price
575-00110	RAD110	2 x 2-3/4	55 x 75	20	\$39.95
575-00116	RAD116	2.6 x 4	—	10	\$42.93

## Chemical Vulcanizing Fluid

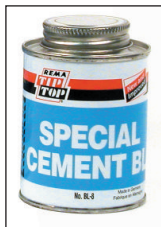


For the vulcanization of tube patches and rubber-based valves. - 203 & 204

## Special Cement BL

- The lynchpin of Rema's exclusive Blue Bonding System™
- Creates a nearly indestructible bond between tire and repair unit
- Specially formulated for use in all types of tire repair, special accelerator solution that can be used equally well in both cold and hot vulcanization

Now Available.  
Flammable Super  
Fast Dry BL!  
Call Today.



Ascot No.	McGee No.	Description	Price
501-00203	203RM	Cold Vulc Fluid 8 oz. can w/brush	\$10.95
501-00204	204RM	Cold Vulc Fluid 1 qt. can w/brush	\$36.72
502-50340	BL8	Special Cement BL - 8 oz. brush top can	\$12.91
502-50388	BL32	Special Cement BL - 32 oz. can	\$43.29
—	BL8F	Flammable Cement BL - 8 oz. brush top can	\$12.96
—	BL32F	Flammable Cement BL - 32 oz can	\$43.95

## Prema Universal Repairs

PREMA Universal Repairs are designed for NAILHOLE REPAIRING of tubeless tires in the CROWN area only. Universal Repairs are available in round or square versions. Install with PREMA Ultra Fast Dry Vulcanizing Cement. Always fill the injury channel with the appropriate Prema repair material.



Ascot #	McGee #	Description	L (in.)	W (in.)	Qty/Box	Price
571-25020	PUR2	Universal Round 2	2 1/4	--	50	\$36.95
571-25520	PUS2	Universal Square 2	1 3/4	1 3/4	100	\$42.62
571-25530	PUS3	Universal Square 3	2 1/2	2 1/2	100	\$64.95

## Ultra Fast Dry Vulcanizing Cement

PREMA Ultra Fast Dry Vulcanizing Cement is formulated to provide outstanding performance when used in conjunction with PREMA Repair Materials. Contains no ozone depleting chemicals.



Ascot #	McGee #	Description	Size	Price
501-22520	PFC8	Ultra Fast Dry Vulcanizing Cement (Flammable)	8 fl. oz.	\$8.95
501-22530	PFC32	Ultra Fast Dry Vulcanizing Cement (Flammable)	32 fl. oz.	\$27.95

## Pre-Buff Cleaner

PREMA Pre-Buff Cleaner is formulated to remove contaminants and silicone from the innerliner of the tire prior to buffing. Contains no ozone depleting chemicals.



Ascot #	McGee #	Description	Size	Price
505-22730	PPC32	Pre-Buff Cleaner (Flammable)	32 fl oz	\$11.95
	PPC16	Pre-Buff Cleaner (Aerosol)	16 fl oz	\$7.95

## Prema Radial Repairs - Passenger and Light Truck

PREMA Center-Over-Injury Repairs are designed for use in all radial tires. The PREMA Radial Repair is intended for use in HOT or COLD applications. PREMA Radial Repairs are designed for use in the crown, sidewall and shoulder of radial tires. Install with PREMA Ultra Fast Dry Vulcanizing Cement. Refer to the PREMA Repair Chart for proper selection of the repair unit. Always fill the injury channel with the appropriate Prema repair material.



Ascot #	McGee #	Description	L (in.)	W (in.)	# Plies	Qty/Box	Price
575-22109	PR109	Radial 109	3	1 3/4	1	20	\$22.66
575-22100	PR110	Radial 110	3 1/4	2 1/4	1	20	\$24.35
575-22105	PR110B	Radial 110	3 1/4	2 1/4	1	80	\$99.95
575-22120	PR112	Radial 112	4 3/4	3	1	10	\$22.46
575-22125	PR112B	Radial 112	4 3/4	3	1	40	\$92.50
575-22130	PR113	Radial 113	5	3 1/4	1	10	\$33.99
575-22140	PR114	Radial 114	5 1/4	3 1/2	1	10	\$33.99
575-22200	PR120	Radial 120	5	3 1/4	2	10	\$39.95
575-22350	PR135	Radial 135	7 1/2	5 1/2	4	10	\$124.95
575-22400	PR140	Radial 140	7 3/4	4 1/4	3	10	\$99.95

# JET TIRE REPAIR MATERIALS

*Premium Quality Chemical Vulcanizing Rubber Patches — Value Pricing!*

## Jet Radial Repairs - Passenger and Light Truck

JET Center-Over-Injury Repairs are designed for use in all radial tires. The Jet Radial Repair is intended for use in HOT or COLD applications. Jet Radial Repairs are designed for use in the crown, sidewall and shoulder of radial tires. Install with Jet Fast Dry Vulcanizing Cement. Refer to the Jet Repair Chart for proper selection of the repair unit. Always fill the injury channel with the appropriate Jet repair material.

Radial Repair Units



Repair Unit	Size		Qty/Box	Price
	Inch	mm		
JR110	2 3/4 x 2	70 x 50	10	\$5.17
JR110R	3 1/4 x 2 3/8	80 x 60	10	\$7.46
JR112	4 3/8 x 2 1/2	110 x 65	10	\$9.17
JR114	5 3/4 x 3	145 x 75	10	\$16.78
JR120	5 x 3	125 x 75	10	\$17.08
JR122	6 7/8 x 2 3/8	175 x 80	10	\$22.61
JR124	8 1/4 x 3 3/8	210 x 85	10	\$31.17
JR126	10 1/4 x 3	260 x 75	10	\$34.81

## Bead Sealer

JET Bead Sealer provides a seal between the bead area of the tire and rim, assisting in the prevention of leaks caused by minor surface imperfections.



McGee #	Description	Size	Price
1732J	Bead Sealer	32 fl. oz.	\$9.33

## Innerliner Overbuff Sealant

Designed to restore air retention qualities to the buffed innerliner around the repair after installations. It can be used in both COLD and HOT vulcanizing systems.



Inner Liner Repair Sealant

McGee #	Description	Size	Price
1742J	Innerliner Sealer	16 fl. oz.	\$6.67

## Bias Repairs - Passenger and Truck

JET Bias Repairs are designed with large ply construction for repairing all bias ply tube and tubeless tires. These repairs can be used for repairing crown, shoulder and sidewall injuries. Install with Jet Fast Dry Vulcanizing Cement or Black Vulcanizing Cement in hot curing systems.

Bias Repair Units



Bias Repair Units - Can be used for crown, shoulder or sidewall

Repair Unit	Size		Qty/Box	Price
	Inch	mm		
JB03	4 1/8	105	15	\$15.23
JB04	4 3/8	120	15	\$23.79
JB05	6 5/8	170	10	\$31.93
JB06	9 5/8	245	10	\$75.53
JB07	11 5/8	295	10	\$121.67
JB08	13 5/8	345	5	\$79.09

## Fast Dry Vulcanizing Cement

JET Fast Dry Vulcanizing Cement is formulated to provide outstanding performance when used with JET Repair Materials.



McGee #	Description	Size	Price
1702J	Fast Dry Vulcanizing Cement (Flammable)	8 fl. oz.	\$4.23
1704J	Fast Dry Vulcanizing Cement (Flammable)	32 fl. oz.	\$13.25

## Pre-Buff Cleaner

JET Pre-Buff Cleaner is formulated to remove contaminants and silicone from the innerliner of the tire prior to buffing.



McGee #	Description	Size	Price
1722J	Cleaner (Flammable)	32 fl oz	\$8.06
1721	Pre-Buff Cleaner (Aerosol)	16 fl oz	\$6.23



# JET TIRE REPAIR MATERIALS

Premium Quality Chemical Vulcanizing Rubber Patches

Jet flexible patches are feather edged and have split poly backing for fast and easy repair!

## Rep Boy

**#3050RB**  
 WAS \$495  
**NOW - \$266**

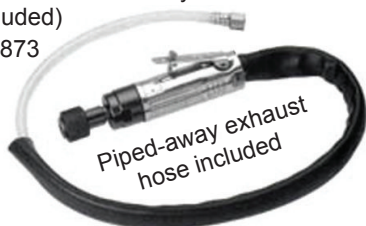
The Rep Boy has a 360° swivel top, adjustable tire spreader, four tilt settings, and a tool bin. The adjustable tire spreader can accommodate all tires from garden service right through to light truck tires. The Rep Boy is versatile enough to be used at the corner service center, high volume tire service centers, or section repair shops.



## Heavy Duty Air Tire Buffer

- Quick change chuck for easy bit change
- Piped-away exhaust directs air away from work area and user (included)
- Comparable to CP873

**15810873**  
**\$69.95**



## SLP-9400 Overhose Kit

Ascot #	McGee #	Description	Price
173-09165	2500	Quick Change Chuck	\$22.18
173-09201	2510	1 1/16" x 3/8" -24 Chuck Adap. w/Washer & Nut	\$4.40
173-09202	2511JD	2 3/4" x 3/8" -24 Chuck Adap. w/Nut & Wheel Spacer	\$6.20
173-09211	2512JD	1 7/8" x 3/8" -24 Threaded Adap. w/Washer & Nut - Quick Change	\$2.78
173-09212	SLP9212	2 1/4" long x 3/8" - 24 Threaded Adap. w/Washer & Nut Quick Change	\$4.40
173-09213	2522	1 5/16" Adap. w/Set Screw for 1/8" Shank	\$2.18
173-09215	2523JD	1 5/16" Adapter w/Set Screw for 1/4" Shank	\$2.18
173-09216	SLP9216	1 5/16" Adapter w/Set Screw for 5/16" Shank	\$3.00
173-09400	SLP9400	Overhose Kit	\$17.73

## Value Pricing!

### NAIL HOLE REPAIR - Chemically Laminated

Tube Repair Unit - Circular All Rubber Patch, Poly Back

Repair Unit	Size		Qty/Box	Price
	Inch	mm		
JTC45	1 3/4 dia	45 dia	40	\$5.76
JTC55	2 1/8 dia	55 dia	40	\$8.30
JTC75	3 dia	75 dia	25	\$8.90
JTC100	4 dia	100 dia	10	\$6.70

JTC - Circular



Universal repairs - nail hole injuries in crown area only. Techno cushion gum for max adhesion!

### Bias or Radial — Universal Repair Units - Square

JAS45R	1 3/4 sq	45 sq	30	\$4.85
JAS45R300	1 3/4 sq	45 sq	300	\$45.15
JAS55R	2 1/8 sq	55 sq	30	\$7.01
JAS55R300	2 1/8 sq	55 sq	300	\$66.48

JASR - Square



### Bias or Radial — Universal Repair Units - Circular

JAC45R	1 3/4 dia	45 dia	40	\$6.25
JAC45R300	1 3/4 dia	45 dia	300	\$41.33
JAC55R	2 1/8 dia	55 dia	40	\$9.09
JAC55R300	2 1/8 dia	55 dia	300	\$60.15
JAC75R	3 dia	75 dia	25	\$10.72

JACR - Circular

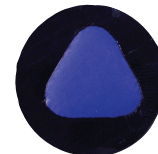


### SPECIAL PATCHES

Part #	Amount	Description
SID1B	100	Blue Triangle Section Patches
ST2	100	9K Yellow Steer Tire 1-5/8" Patches
ST1	100	10K Orange Steer Tire 1-5/8" Patches
SID1Y	100	Yellow Triangle ID Patch



ST2



SID1B

**SID1B - \$45.00**